

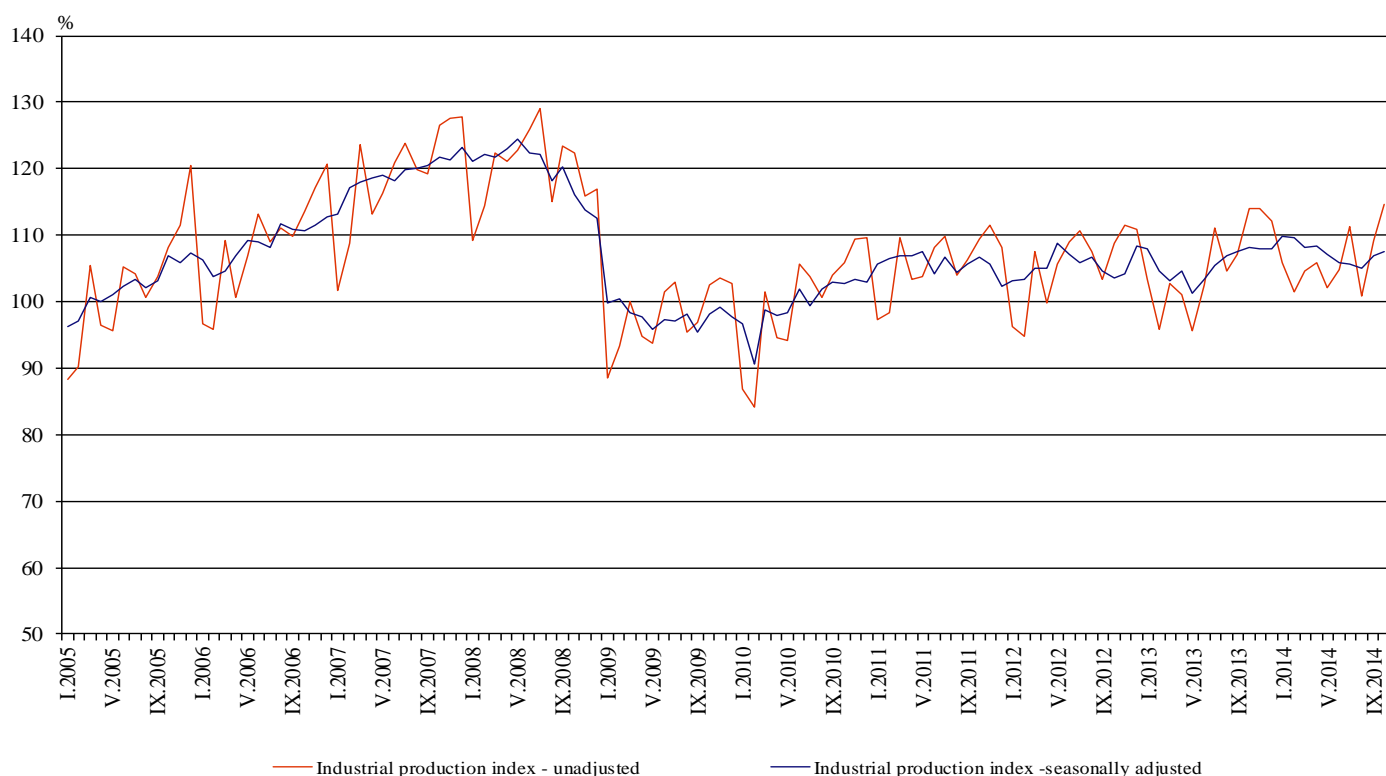


INDUSTRIAL PRODUCTION INDICES IN OCTOBER 2014¹

According to the preliminary data the Industrial Production Index², seasonally adjusted³, increased by 0.5% in October 2014 as compared to September 2014.

In October 2014 working day adjusted⁴ Industrial Production Index rose by 0.4% in comparison with the same month of 2013.

Figure 1. Industrial Production Indices (2010 = 100)



¹ October 2014 data are preliminary.

² Monthly Industrial Production and Industrial turnover indices measure changes in production and turnover values of industrial enterprises. This information can be used to assess the current economic development and for short-term forecasts. Indices do not measure the actual production level, it aims to measure the average change in value of production between two points of time. Indices are compiled on the basis of information collected through representative sampling survey on industrial enterprises. The sample covers enterprises with annual turnover more than 97% of total turnover in industry.

Industrial production indices are calculated at constant base year that is to say they are weighted with the structure of the value added at factor costs in the base year.

³ Seasonal adjustment is a statistical method, which eliminates the seasonal component of time series.

⁴ Working day adjustment is an adjustment for variations caused by calendar effects, different number of calendar and working days in the months, national holidays and outliers (for example the presence of more non-working days in May could contribute to the decline in the production in some activities).

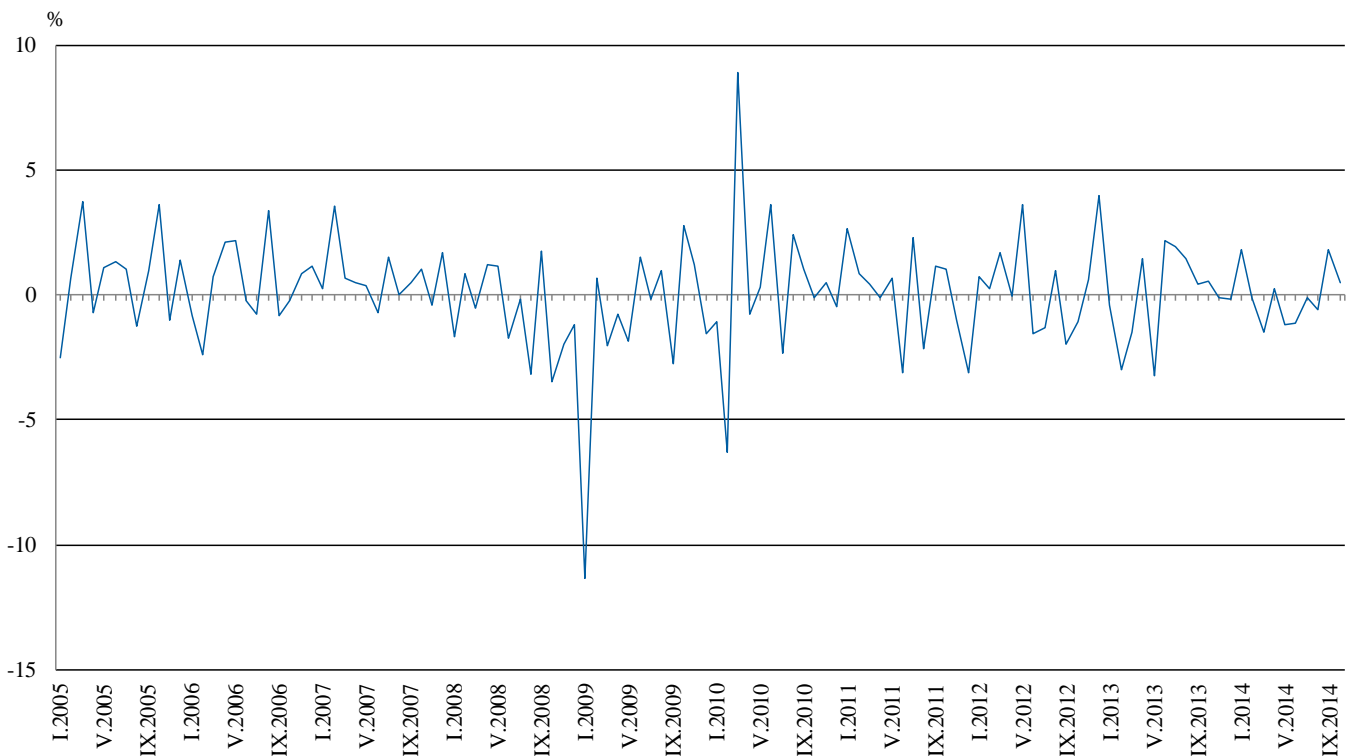


Monthly comparisons

In October 2014 as compared to September 2014, the seasonally adjusted Industrial Production Index increased in the mining and quarrying industry by 5.8% and in the electricity, gas, steam and air conditioning supply by 3.7%, while in the manufacturing a decrease by 0.3% was seen.

The most significant decreases of production in the manufacturing were registered in the repair and installation of machinery and equipment by 9.8%, in the manufacture of fabricated metal products, except machinery and equipment by 9.6%, in the manufacture of machinery and equipment by 4.5%. There was an increase in the manufacture of other transport equipment by 30.6%, in the manufacture of chemicals and chemical products by 13.6%, in the manufacture of computer, electronic and optical products by 7.4%.

Figure 2. Changes of Industrial Production Indices compared to the previous month (Seasonally adjusted)



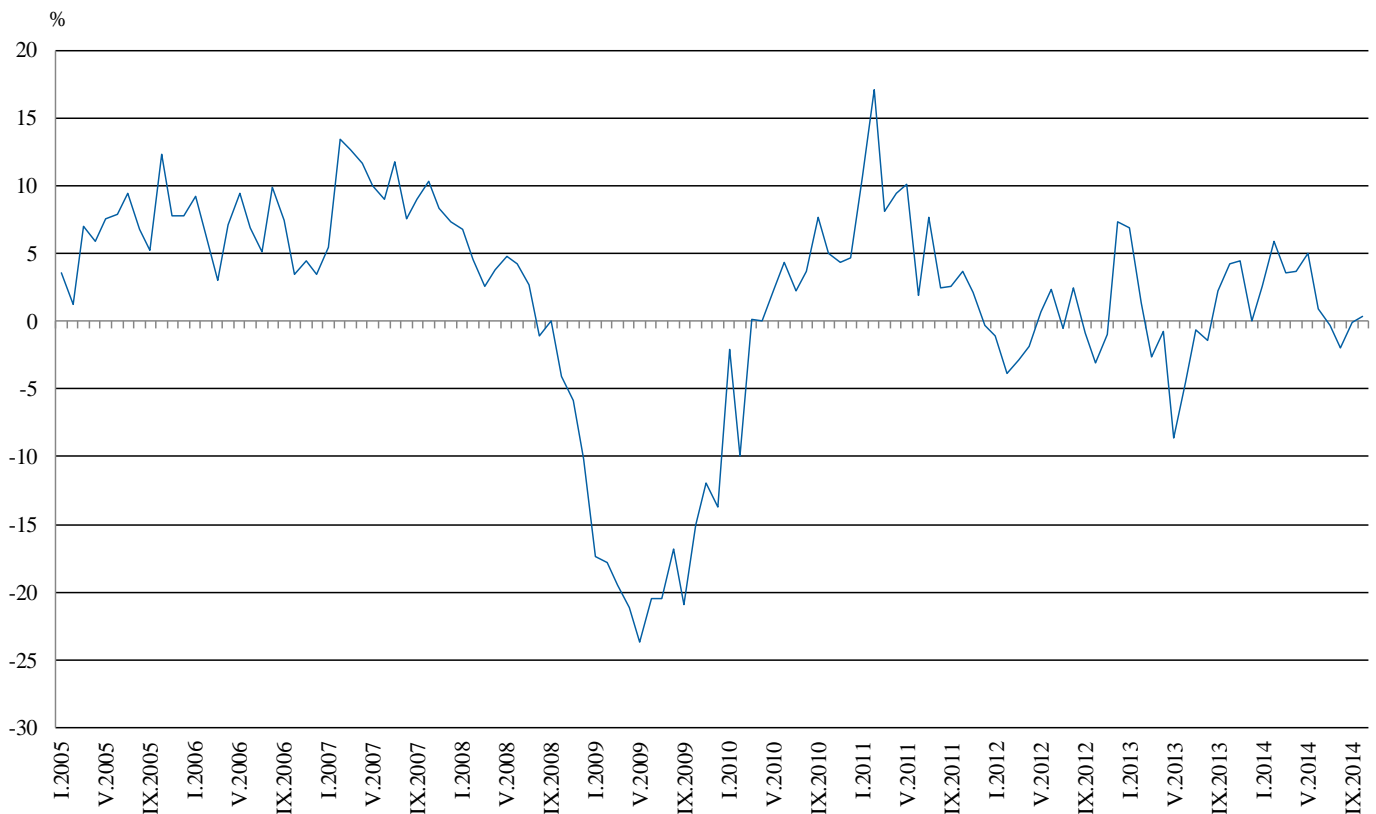


Annual comparisons

On annual basis in October 2014 Industrial Production Index, calculated from working day adjusted data increased in the manufacturing by 2.3%, while decreases were seen in the mining and quarrying industry by 8.8% and in the electricity, gas, steam and air conditioning supply by 2.7%.

In the manufacturing, the more significant increases compared to the same month of the previous year were seen in the manufacture of motor vehicles, trailers and semi-trailers by 36.3%, in the manufacture of chemicals and chemical products by 32.4%, in the manufacture of tobacco products by 23.2%, in the manufacture of rubber and plastic products by 12.1%. Decreases were registered in the manufacture of beverages by 13.9%, in the manufacture of fabricated metal products, except machinery and equipment by 6.2%, in the manufacture of food products by 4.9%.

Figure 3. Changes of Industrial Production Indices compared to the same month of the previous year (Working day adjusted)



The final data on Industrial Production and Turnover Indices for September 2014 can be found on the NSI web site: <http://www.nsi.bg/en>.

Changes of Industrial Production Indices compared to the previous month¹

(Per cent)

Economic Activities	NACE.BG - 2008	2014					
		V	VI	VII	VIII	IX	X
Industry	B_TO_E36	-1.2	-1.1	-0.1	-0.6	1.8	0.5
Mining and quarrying	B	-3.4	-2.3	1.1	2.5	-5.9	5.8
of which:							
Mining of coal and lignite	B05	-1.5	-21.6	3.4	5.9	0.9	5.6
Mining of metal ores	B07	-0.3	14.9	4.7	-1.8	-9.7	3.2
Other mining and quarrying	B08	-11.6	2.3	6.1	-0.2	1.7	1.6
Manufacturing	C	-2.0	0.3	2.0	-0.4	1.5	-0.3
of which:							
Manufacture of food products	C10	-4.1	0.6	1.9	-0.2	-1.9	-0.4
Manufacture of beverages	C11	-4.6	-1.0	1.1	1.9	-8.0	-2.9
Manufacture of tobacco products	C12	-14.0	-14.5	22.5	-7.3	10.0	6.8
Manufacture of textiles	C13	-0.2	-4.6	5.0	1.3	0.7	1.0
Manufacture of wearing apparel	C14	3.0	-5.6	-1.2	4.5	-3.8	0.2
Manufacture of leather and related products	C15	-5.4	4.9	0.1	4.4	-1.4	-1.2
Manufacture of wood and of products of wood and cork, except furniture; manufacture of articles of straw and plaiting materials	C16	0.4	0.1	3.6	-4.9	-6.3	6.3
Manufacture of paper and paper products	C17	-0.6	1.4	1.1	-2.9	2.0	2.5
Printing and reproduction of recorded media	C18	1.6	-6.9	2.2	-12.0	11.0	2.2
Manufacture of chemicals and chemical products	C20	0.8	-0.8	-9.8	10.0	6.6	13.6
Manufacture of basic pharmaceutical products and pharmaceutical preparations	C21	-6.5	-2.2	3.7	-12.8	8.7	7.3
Manufacture of rubber and plastic products	C22	-4.3	1.1	2.1	-4.9	3.1	-0.3
Manufacture of other non-metallic mineral products	C23	1.5	-7.1	5.7	-0.4	-4.0	1.8
Manufacture of basic metals	C24	5.7	1.5	1.6	-1.2	-2.9	2.9
Manufacture of fabricated metal products, except machinery and equipment	C25	-5.7	8.7	3.1	-7.3	17.9	-9.6
Manufacture of computer, electronic and optical products	C26	7.0	-4.1	13.4	-14.1	5.1	7.4
Manufacture of electrical equipment	C27	-4.1	-1.2	1.8	-4.0	4.8	2.6
Manufacture of machinery and equipment n.e.c.	C28	-10.9	0.6	1.7	2.2	6.0	-4.5
Manufacture of motor vehicles, trailers and semi-trailers	C29	-2.0	3.8	0.5	-1.5	8.8	3.0
Manufacture of other transport equipment	C30	-15.0	-3.8	26.2	-36.1	6.9	30.6
Manufacture of furniture	C31	-1.1	-0.1	3.0	6.2	-4.8	-1.7
Other manufacturing	C32	-12.4	12.5	8.9	-8.2	-2.7	-3.1
Repair and installation of machinery and equipment	C32	1.6	7.9	6.6	2.0	0.6	-9.8
Electricity, gas, steam and air conditioning supply	D	0.8	-0.3	-0.9	-3.1	3.8	3.7
Electricity, gas, steam and air conditioning supply	D35	0.8	-0.3	-0.9	-3.1	3.8	3.7

¹ Seasonally adjusted.



Table 2

Changes of Industrial Production Indices compared to the same month of the previous year¹
(Per cent)

Economic Activities	NACE.BG - 2008	2014					
		V	VI	VII	VIII	IX	X
Industry	B_TO_E36	5.0	0.9	-0.3	-2.0	0.0	0.4
Mining and quarrying	B	7.6	-0.7	-1.3	-5.3	-7.4	-8.8
of which:							
Mining of coal and lignite	B05	139.0	-11.5	10.1	-9.9	2.1	-6.7
Mining of metal ores	B07	-15.0	2.9	-5.4	-2.0	-14.3	-9.7
Other mining and quarrying	B08	-12.0	-4.3	4.0	-5.5	4.1	8.3
Manufacturing	C	3.0	2.2	3.9	2.9	5.1	2.3
of which:							
Manufacture of food products	C10	-0.1	-6.7	-3.7	5.2	-2.0	-4.9
Manufacture of beverages	C11	-11.3	-11.9	-3.9	-1.5	-16.0	-13.9
Manufacture of tobacco products	C12	-17.4	-25.2	-5.8	-9.9	-3.7	23.2
Manufacture of textiles	C13	7.9	1.8	11.0	6.8	3.5	10.1
Manufacture of wearing apparel	C14	7.8	-0.7	-4.2	1.5	-3.6	0.0
Manufacture of leather and related products	C15	-5.8	7.0	0.2	6.9	-2.0	-1.2
Manufacture of wood and of products of wood and cork, except furniture; manufacture of articles of straw and plaiting materials	C16	1.8	0.7	5.5	4.9	-7.7	0.7
Manufacture of paper and paper products	C17	0.2	2.2	-1.2	-1.0	1.1	1.5
Printing and reproduction of recorded media	C18	-1.6	2.4	-0.6	-4.4	0.6	7.4
Manufacture of chemicals and chemical products	C20	4.7	11.0	-4.3	13.6	29.8	32.4
Manufacture of basic pharmaceutical products and pharmaceutical preparations	C21	-3.5	2.8	2.3	-17.0	-8.7	6.0
Manufacture of rubber and plastic products	C22	12.6	18.9	18.0	12.1	10.6	12.1
Manufacture of other non-metallic mineral products	C23	7.3	0.6	6.6	-1.2	-4.3	0.8
Manufacture of basic metals	C24	9.0	17.5	8.1	6.6	1.5	1.0
Manufacture of fabricated metal products, except machinery and equipment	C25	6.8	8.8	10.0	2.7	22.9	-6.2
Manufacture of computer, electronic and optical products	C26	9.2	20.0	18.2	5.6	13.1	1.7
Manufacture of electrical equipment	C27	7.2	-1.2	6.0	-6.9	4.4	9.2
Manufacture of machinery and equipment n.e.c.	C28	1.5	5.6	3.2	6.4	10.9	2.4
Manufacture of motor vehicles, trailers and semi-trailers	C29	32.9	24.0	19.4	32.4	31.3	36.3
Manufacture of other transport equipment	C30	27.0	2.6	45.0	-20.9	-11.8	4.3
Manufacture of furniture	C31	7.9	3.5	7.6	11.9	4.8	0.5
Other manufacturing	C32	-3.3	0.3	10.0	3.4	3.4	-9.0
Repair and installation of machinery and equipment	C33	0.7	18.5	22.5	26.3	18.2	-2.8
Electricity, gas, steam and air conditioning supply	D	8.6	-4.4	-12.0	-15.2	-11.7	-2.7
Electricity, gas, steam and air conditioning supply	D35	8.6	-4.4	-12.0	-15.2	-11.7	-2.7

¹ Working day adjusted.



Table 3

**Industrial Production Indices
(Seasonally adjusted, 2010 = 100)**

NACE.BG - 2008	2013			2014									
	X	XI	XII	I	II	III	IV	V	VI	VII	VIII	IX	X
B_TO_E36	108.1	108.0	107.8	109.8	109.7	108.1	108.3	107.1	105.8	105.7	105.1	106.9	107.5
B	107.3	107.4	120.4	115.8	95.7	92.2	99.6	96.2	94.0	95.1	97.5	91.8	97.1
B05	118.4	111.0	124.7	123.4	103.5	87.8	115.9	114.2	89.5	92.6	98.0	98.9	104.4
B07	101.5	113.1	121.7	115.8	95.6	93.2	81.7	81.5	93.6	98.0	96.3	87.0	89.7
B08	105.8	102.5	88.5	107.3	101.2	102.9	114.2	101.0	103.3	109.7	109.4	111.2	113.0
C	108.0	108.3	107.0	109.3	111.5	108.8	109.4	107.2	107.5	109.6	109.1	110.8	110.5
C10	92.5	95.7	89.7	90.0	88.4	92.1	91.8	88.0	88.6	90.3	90.1	88.4	88.0
C11	97.8	99.8	103.4	97.6	108.4	106.5	100.6	95.9	95.0	96.1	97.8	90.0	87.4
C12	104.5	101.7	111.7	114.1	121.4	114.7	118.9	102.3	87.5	107.2	99.4	109.3	116.6
C13	100.4	95.5	97.6	109.0	107.3	112.1	106.8	106.5	101.7	106.8	108.1	108.9	110.0
C14	96.6	104.1	100.9	100.9	99.8	102.8	100.0	102.9	97.1	96.0	100.3	96.5	96.8
C15	78.8	73.4	75.3	77.8	77.3	74.7	76.7	72.6	76.2	76.2	79.6	78.5	77.6
C16	96.7	103.9	95.9	110.1	109.5	101.1	99.0	99.4	99.4	103.0	97.9	91.8	97.6
C17	121.1	123.0	117.9	124.7	120.2	115.5	117.7	117.0	118.7	120.0	116.5	118.9	121.8
C18	96.9	94.3	105.0	112.8	109.5	111.7	107.7	109.4	101.9	104.2	91.7	101.8	104.0
C20	96.9	99.9	99.4	95.0	97.5	97.7	105.8	106.6	105.8	95.4	105.0	111.9	127.1
C21	133.2	135.7	135.4	147.5	140.4	133.3	143.0	133.7	130.8	135.6	118.2	128.5	137.9
C22	114.0	114.5	114.6	127.8	129.2	126.0	132.2	126.5	128.0	130.6	124.2	128.0	127.6
C23	110.6	111.6	112.5	111.5	119.6	113.1	115.4	117.2	108.9	115.1	114.7	110.1	112.0
C24	106.7	104.5	98.4	110.5	105.3	102.3	98.9	104.6	106.2	107.8	106.5	103.4	106.4
C25	126.4	111.9	98.8	112.2	117.6	104.6	113.7	107.3	116.6	120.2	111.4	131.3	118.7
C26	142.2	127.7	106.1	141.3	128.0	139.5	127.4	136.4	130.9	148.4	127.5	133.9	143.8
C27	118.8	121.1	114.4	128.2	131.1	129.5	129.9	124.5	123.0	125.2	120.1	125.9	129.2
C28	138.6	142.4	148.9	149.8	139.6	137.0	150.1	133.8	134.5	136.8	139.9	148.4	141.8
C29	108.1	113.6	106.5	137.1	131.3	135.1	129.3	126.7	131.6	132.2	130.2	141.6	145.8
C30	85.9	85.9	69.3	80.1	82.1	87.9	93.6	79.5	76.5	96.6	61.7	66.0	86.2
C31	122.8	124.1	118.5	126.3	122.6	119.1	122.4	121.1	121.0	124.6	132.3	125.9	123.8
C32	156.8	156.7	131.2	136.6	153.6	166.1	154.8	135.6	152.5	166.1	152.5	148.4	143.8
C33	84.3	75.6	77.9	81.5	81.2	79.4	75.6	76.8	82.9	88.4	90.1	90.7	81.8
D	110.4	109.8	113.1	118.7	109.2	108.3	103.3	104.1	103.9	102.9	99.8	103.5	107.4
D35	110.4	109.8	113.1	118.7	109.2	108.3	103.3	104.1	103.9	102.9	99.8	103.5	107.4



Table 4

Industrial Production Indices
(Working day adjusted, 2010 = 100)

NACE.BG - 2008	2011	2012	2013			2014									
	X	X	X	XI	XII	I	II	III	IV	V	VI	VII	VIII	IX	X
B_TO_E36	111.4	108.0	112.5	114.8	113.9	105.1	101.6	106.9	104.1	101.3	105.7	109.9	102.3	107.4	112.9
B	125.0	125.6	121.8	117.1	131.6	109.9	88.4	87.6	92.2	90.5	89.5	94.4	96.3	94.2	111.2
B05	142.6	128.8	145.9	125.6	145.0	135.2	98.7	77.5	93.1	95.9	64.2	79.7	96.3	104.0	136.1
B07	106.3	109.9	108.2	113.3	129.6	102.3	85.4	93.2	85.7	86.0	99.6	98.2	94.2	84.9	97.7
B08	112.9	143.6	122.3	114.5	89.0	67.6	71.8	93.3	112.7	107.7	114.0	124.8	122.6	124.0	132.5
C	112.9	109.2	114.5	114.1	103.1	94.2	98.6	107.6	111.1	108.2	113.7	118.2	107.0	114.5	117.2
C10	106.0	101.3	102.0	102.5	94.1	75.8	75.7	90.4	88.1	86.1	90.9	91.6	93.0	95.7	97.0
C11	89.1	95.2	88.9	90.5	107.9	60.7	70.7	98.7	98.6	107.2	116.8	117.2	122.1	99.4	76.6
C12	110.6	97.0	94.5	90.2	103.3	81.6	92.8	114.4	117.6	113.3	103.9	128.7	103.5	122.0	116.4
C13	93.8	89.9	100.3	98.8	85.1	92.7	103.1	127.0	117.7	120.0	113.4	112.3	87.2	104.9	110.4
C14	100.6	88.3	92.3	104.8	101.5	102.9	98.3	100.5	93.8	95.6	102.8	107.9	101.4	92.3	92.3
C15	99.8	75.9	83.0	72.7	69.0	77.5	75.3	74.3	65.8	62.7	80.8	92.2	79.8	86.3	82.0
C16	115.4	114.2	108.6	113.3	87.7	88.8	90.7	96.5	97.0	99.2	108.1	115.0	101.0	98.9	109.3
C17	90.4	98.1	116.7	117.5	111.0	117.0	113.6	119.6	122.0	120.7	124.5	128.1	117.1	119.7	118.4
C18	111.9	94.3	105.1	100.6	116.9	93.5	96.7	106.3	104.4	106.5	106.4	104.7	93.7	107.1	112.8
C20	107.5	96.7	94.5	103.3	98.4	88.4	91.6	107.7	109.9	107.7	110.1	95.7	98.6	112.0	125.1
C21	134.2	135.1	142.8	139.4	131.5	123.5	142.5	133.3	144.5	131.8	138.7	127.5	106.9	129.9	151.4
C22	114.7	116.6	127.3	122.2	102.0	103.8	109.4	125.6	130.8	124.7	138.2	144.6	127.0	136.3	142.7
C23	130.4	126.3	125.2	121.1	94.7	78.6	96.0	109.3	121.6	128.3	117.2	124.5	122.3	119.2	126.2
C24	119.8	97.3	118.2	116.8	72.6	114.1	102.6	98.3	105.4	110.0	101.6	126.2	100.8	93.4	119.4
C25	135.0	104.6	132.8	119.8	112.4	83.4	103.7	105.6	113.7	105.0	124.4	126.8	108.5	136.1	124.6
C26	120.9	102.2	142.8	135.4	123.1	124.8	115.0	143.7	126.1	136.9	136.4	149.6	111.7	137.3	145.2
C27	115.8	140.6	129.7	133.8	110.0	116.3	121.6	128.5	131.1	117.6	132.4	133.8	105.1	127.8	141.6
C28	123.2	123.3	142.2	147.0	143.1	129.4	132.5	146.2	153.8	132.1	144.9	144.3	126.1	151.1	145.6
C29	104.0	100.7	117.2	123.3	91.6	129.7	124.5	141.8	133.9	127.8	141.7	135.5	109.7	146.9	159.8
C30	64.9	99.4	82.0	79.4	74.8	53.6	72.6	93.3	94.6	98.7	89.0	103.8	50.6	57.5	85.5
C31	129.2	127.3	135.2	135.1	124.2	106.5	106.5	117.5	117.2	118.6	126.5	127.7	135.2	130.0	135.9
C32	123.8	161.5	185.1	165.5	114.9	109.8	132.2	166.7	150.9	136.7	173.3	168.6	155.0	158.7	168.5
C33	91.8	98.7	89.9	83.8	110.3	56.6	69.7	78.3	68.5	71.1	84.4	87.2	90.4	95.5	87.3
D	102.9	98.9	105.1	118.9	139.7	139.5	119.4	117.4	92.6	84.6	88.8	94.2	90.1	91.8	102.3
D35	102.9	98.9	105.1	118.9	139.7	139.5	119.4	117.4	92.6	84.6	88.8	94.2	90.1	91.8	102.3