

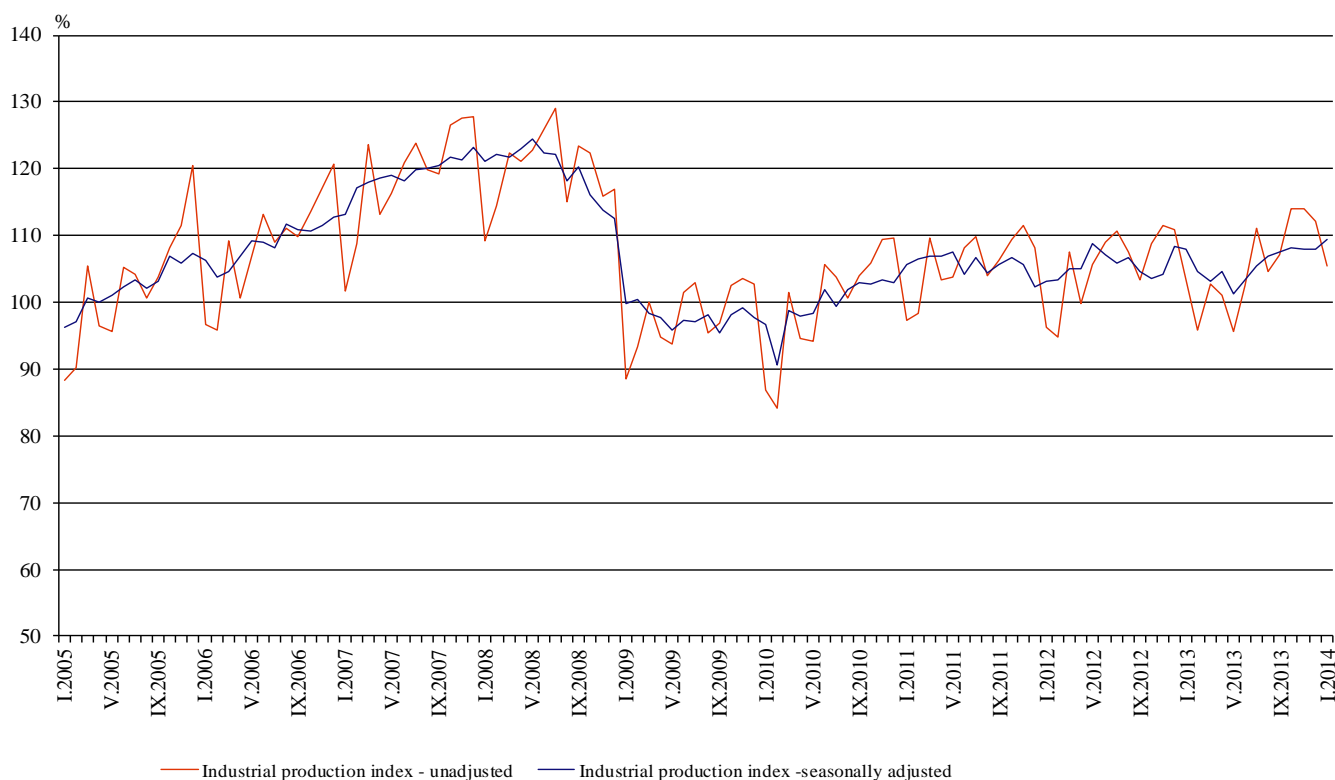


INDUSTRIAL PRODUCTION INDICES IN JANUARY 2014¹

The preliminary data showed that the Industrial Production Index², seasonally adjusted³, increased by 1.4% in January 2014 as compared to December 2013.

In January 2014 working day adjusted⁴ Industrial Production Index rose by 2.3% in comparison with the same month of 2013.

Figure 1. Industrial Production Indices (2010=100)



¹ January 2014 data are preliminary.

² Monthly Industrial Production and Industrial turnover indices measure changes in production and turnover values of industrial enterprises. This information can be used to assess the current economic development and for short-term forecasts. Indices do not measure the actual production level, it aims to measure the average change in value of production between two points of time. Indices are compiled on the base of information collected through representative sampling survey on industrial enterprises. The sample covers enterprises with annual turnover more than 97% of total turnover in industry.

Industrial production indices are calculated at constant base year that is to say they are weighted with the structure of the value added at factor costs in the base year.

³ Seasonal adjustment is a statistical method, which eliminates the seasonal component of time series.

⁴ Working day adjustment is an adjustment for variations caused by calendar effects, different number of calendar and working days in the months, national holidays and outliers (for example the presence of more non-working days in May could contribute to the decline in the production in some activities).

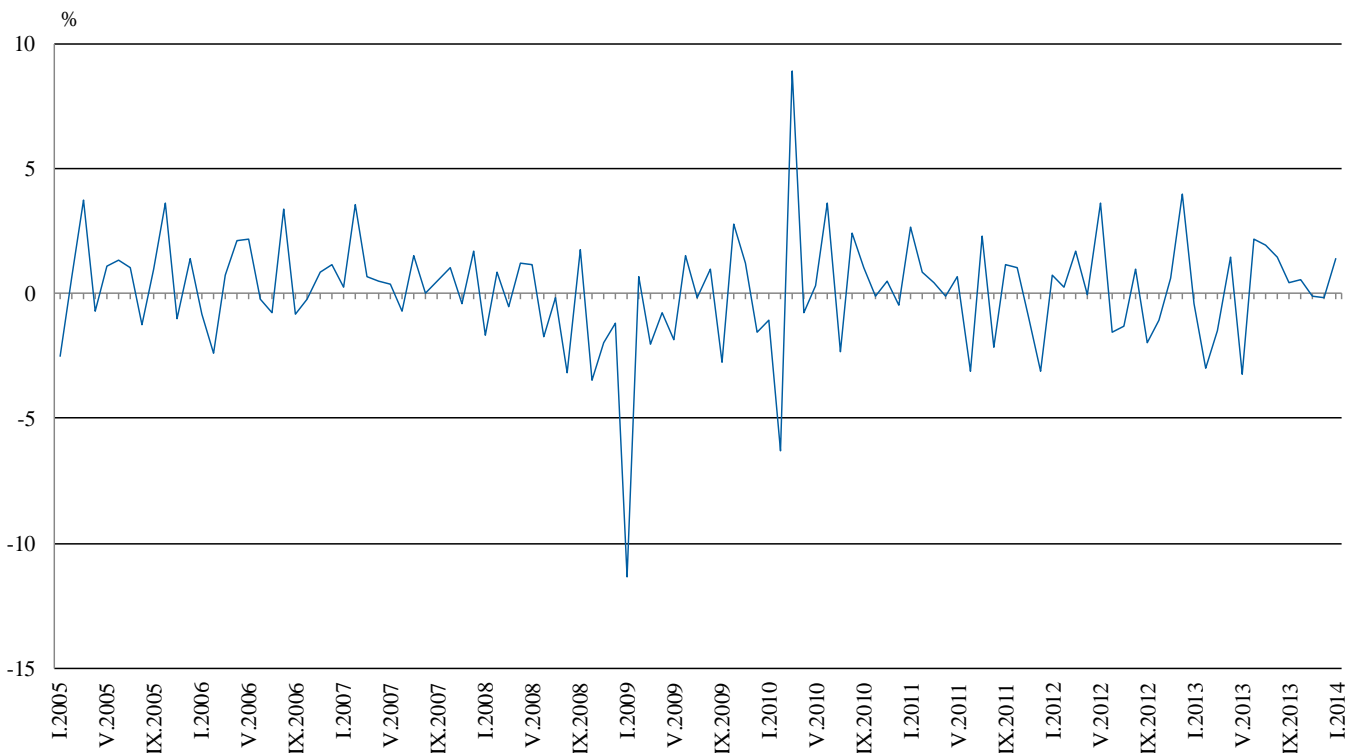


Monthly comparisons

In January 2014 as compared to December 2013, the seasonally adjusted Industrial Production Index increased in the electricity, gas, steam and air conditioning supply by 3.1% and in the manufacturing by 1.6%, while in the mining and quarrying industry a decrease by 3.0% was registered.

The most significant increases of production in the manufacturing were registered in the manufacture of computer, electronic and optical products by 31.2%, in the manufacture of motor vehicles, trailers and semi-trailers by 27.8%, in the manufacture of wood and of products of wood and cork, except furniture; manufacture of articles of straw and plaiting materials by 15.2%, in the manufacture of basic metals by 14.3%, in the manufacture of other transport equipment by 13.9%, in the manufacture of fabricated metal products, except machinery and equipment by 13.5%. There was decrease in the manufacture of beverages by 5.3%, in the manufacture of chemicals and chemical products by 4.0%.

Figure 2. Changes of Industrial Production Indices compared to the previous month (Seasonally adjusted)



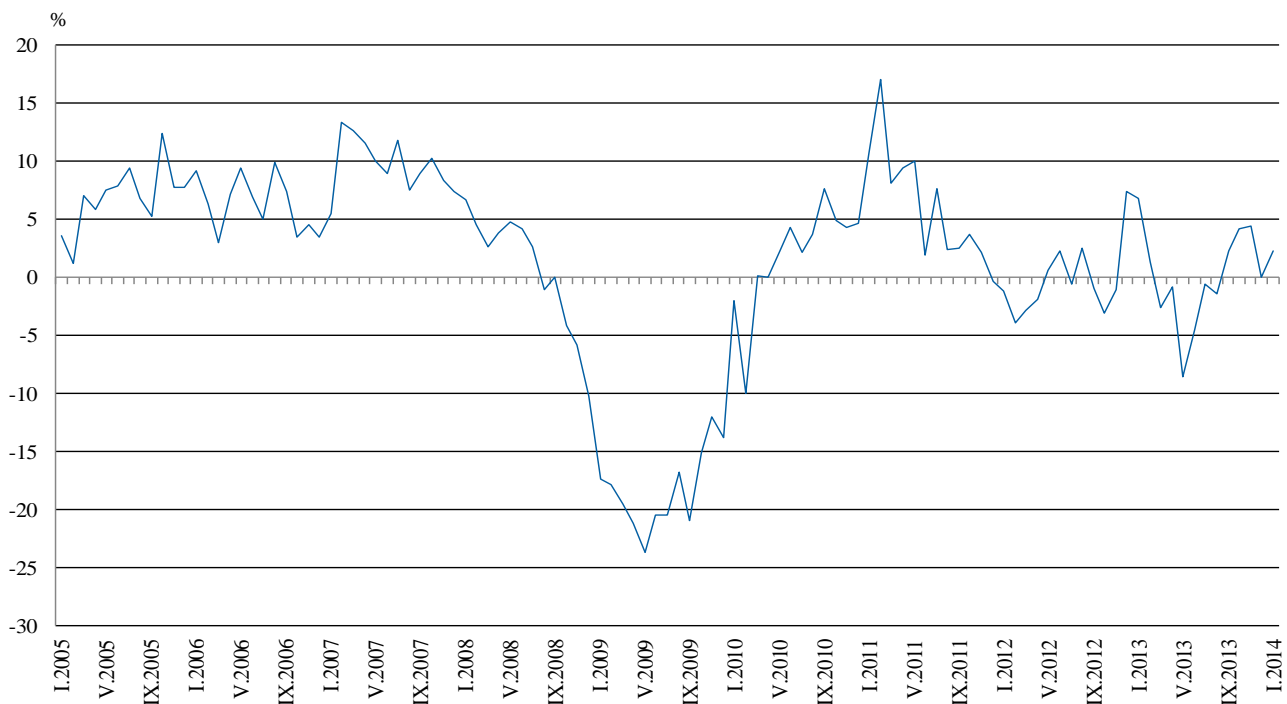


Annual comparisons

On annual basis in January 2014 Industrial Production Index, calculated from working day adjusted data increased in the mining and quarrying industry by 18.0% and in the manufacturing by 1.7%, while in the electricity, gas, steam and air conditioning supply a decrease by 1.5% was seen.

In the manufacturing, the more significant increases compared to the same month of the previous year were seen and in the manufacture of motor vehicles, trailers and semi-trailers by 48.5%, in the printing and reproduction of recorded media by 17.5%, in the manufacture of machinery and equipment by 16.3%, in the manufacture of basic pharmaceutical products and pharmaceutical preparations by 15.1%, in the manufacture of computer, electronic and optical products by 14.4%. Decreases were registered, in the manufacture of other transport equipment by 31.9%, in the manufacture of basic metals by 17.6%, in the manufacture of tobacco products by 11.3%, in the manufacture of beverages by 11.2%.

Figure 3. Changes of Industrial Production Indices compared to the same month of the previous year (Working day adjusted)



The final data on Industrial Production and Turnover Indices for December 2013 can be found on the NSI web-site: (<http://www.nsi.bg/otrasalen.php?otr=46>).

Changes of Industrial Production Indices compared to the previous month¹
(Per cent)

Economic Activities	NACE.BG -2008	2013					2014
		VIII	IX	X	XI	XII	I
Industry	B_TO_E36	1.5	0.5	0.6	-0.1	-0.2	1.4
Mining and quarrying	B	7.7	-4.6	8.6	0.0	12.2	-3.0
of which:							
Mining of coal and lignite	B05	33.8	-10.4	21.6	-6.3	12.4	-0.5
Mining of metal ores	B07	-5.2	2.4	0.1	11.4	7.6	-3.5
Other mining and quarrying	B08	9.0	-8.3	-2.7	-3.1	-13.7	21.1
Manufacturing	C	-0.9	1.0	1.8	0.3	-1.2	1.6
of which:							
Manufacture of food products	C10	-8.7	5.3	2.7	3.4	-6.3	0.3
Manufacture of beverages	C11	1.7	5.5	-7.1	2.0	3.6	-5.3
Manufacture of tobacco products	C12	-3.4	4.5	-8.8	-2.7	9.8	0.7
Manufacture of textiles	C13	5.1	3.7	-4.6	-4.9	2.3	11.3
Manufacture of wearing apparel	C14	2.1	-0.6	-2.9	7.7	-3.0	2.0
Manufacture of leather and related products	C15	-1.4	7.3	-2.3	-6.9	2.7	3.3
Manufacture of wood and of products of wood and cork, except furniture; manufacture of articles of straw and plaiting materials	C16	-4.4	5.8	-1.7	7.4	-7.8	15.2
Manufacture of paper and paper products	C17	-1.5	0.5	0.6	1.6	-4.1	4.8
Printing and reproduction of recorded media	C18	-9.4	6.3	-4.1	-2.6	11.3	7.5
Manufacture of chemicals and chemical products	C20	-6.8	-6.6	12.2	3.1	-0.5	-4.0
Manufacture of basic pharmaceutical products and pharmaceutical preparations	C21	0.3	3.6	-4.0	1.8	-0.2	12.2
Manufacture of rubber and plastic products	C22	-1.0	4.7	-1.2	0.5	0.0	8.0
Manufacture of other non-metallic mineral products	C23	8.0	-2.5	-2.7	0.9	0.8	-1.1
Manufacture of basic metals	C24	1.1	-2.1	6.9	-2.0	-5.9	14.3
Manufacture of fabricated metal products, except machinery and equipment	C25	-3.2	2.0	15.7	-11.4	-11.7	13.5
Manufacture of computer, electronic and optical products	C26	-5.4	-1.6	20.1	-10.1	-16.9	31.2
Manufacture of electrical equipment	C27	5.8	-4.8	-0.5	1.9	-5.5	10.8
Manufacture of machinery and equipment n.e.c.	C28	-0.8	4.9	1.3	2.7	4.6	0.6
Manufacture of motor vehicles, trailers and semi-trailers	C29	-12.9	12.0	-0.4	5.1	-6.3	27.8
Manufacture of other transport equipment	C30	-2.8	-2.1	24.2	0.0	-19.3	13.9
Manufacture of furniture	C31	3.9	0.5	2.0	1.1	-4.5	6.0
Other manufacturing	C32	-3.4	-2.7	9.4	-0.1	-16.2	16.8
Repair and installation of machinery and equipment	C32	-1.4	8.1	7.5	-10.3	3.0	6.3
Electricity, gas, steam and air conditioning supply	D	0.2	0.8	-4.3	-0.6	3.0	3.1
Electricity, gas, steam and air conditioning supply	D35	0.2	0.8	-4.3	-0.6	3.0	3.1

¹ Seasonally adjusted.



Table 2

Changes of Industrial Production Indices compared to the same month of the previous year¹
(Per cent)

Economic Activities	NACE.BG 2008	2013					2014
		VIII	IX	X	XI	XII	I
Industry	B_TO_E36	-1.4	2.2	4.2	4.4	0.0	2.3
Mining and quarrying	B	-6.7	-13.1	-3.0	33.3	12.8	18.0
of which:							
Mining of coal and lignite	B05	-2.7	-16.6	13.3	25.6	12.3	22.2
Mining of metal ores	B07	-3.3	-1.8	-1.6	53.1	15.2	17.7
Other mining and quarrying	B08	-0.7	-13.6	-14.8	-18.3	-19.5	9.1
Manufacturing	C	-1.7	1.1	4.8	4.3	0.5	1.7
of which:							
Manufacture of food products	C10	-10.8	-1.2	0.7	4.7	-2.2	-3.3
Manufacture of beverages	C11	2.5	7.6	-6.6	2.6	15.8	-11.2
Manufacture of tobacco products	C12	-6.9	-8.4	-2.6	3.0	-8.3	-11.3
Manufacture of textiles	C13	21.1	21.6	11.6	-0.2	-6.4	3.6
Manufacture of wearing apparel	C14	7.1	7.0	4.6	11.9	3.7	3.4
Manufacture of leather and related products	C15	-19.8	-4.5	9.3	-5.9	5.3	-1.7
Manufacture of wood and of products of wood and cork, except furniture; manufacture of articles of straw and plaiting materials	C16	-4.5	0.5	-4.9	3.0	-0.8	10.9
Manufacture of paper and paper products	C17	10.1	10.0	18.9	13.8	5.6	13.2
Printing and reproduction of recorded media	C18	16.3	17.0	11.5	-9.1	8.9	17.5
Manufacture of chemicals and chemical products	C20	-8.7	-17.7	-2.3	3.2	4.7	-8.3
Manufacture of basic pharmaceutical products and pharmaceutical preparations	C21	7.5	6.6	5.7	10.6	6.8	15.1
Manufacture of rubber and plastic products	C22	2.7	10.4	9.2	2.1	16.4	8.2
Manufacture of other non-metallic mineral products	C23	9.9	10.4	-0.9	-6.3	5.7	-6.2
Manufacture of basic metals	C24	14.4	1.6	21.5	5.7	7.3	-17.6
Manufacture of fabricated metal products, except machinery and equipment	C25	9.0	17.5	27.0	9.7	-9.0	-1.0
Manufacture of computer, electronic and optical products	C26	5.5	-4.9	39.8	-1.2	-9.1	14.4
Manufacture of electrical equipment	C27	4.7	-6.6	-7.8	-3.7	-20.4	1.7
Manufacture of machinery and equipment n.e.c.	C28	-0.9	12.6	15.3	16.2	19.3	16.3
Manufacture of motor vehicles, trailers and semi-trailers	C29	13.9	10.4	16.4	22.1	22.0	48.5
Manufacture of other transport equipment	C30	-13.3	-13.7	-17.4	17.5	-29.1	-31.9
Manufacture of furniture	C31	5.5	0.4	6.2	8.5	0.6	1.1
Other manufacturing	C32	7.6	2.1	14.7	31.6	3.4	8.4
Repair and installation of machinery and equipment	C33	-26.5	7.9	-9.0	-26.4	-18.1	0.5
Electricity, gas, steam and air conditioning supply	D	2.4	13.4	6.3	-4.2	-6.3	-1.5
Electricity, gas, steam and air conditioning supply	D35	2.4	13.4	6.3	-4.2	-6.3	-1.5

¹ Working day adjusted.



Table 3

Industrial Production Indices
(Seasonally adjusted, 2010=100)

NACE.BG - 2008 Code	2013												2014
	I	II	III	IV	V	VI	VII	VIII	IX	X	XI	XII	I
B_TO_E36	107.9	104.7	103.1	104.7	101.3	103.4	105.4	107.0	107.5	108.1	108.0	107.8	109.4
B	99.1	95.1	86.0	88.5	89.2	94.2	96.2	103.6	98.8	107.3	107.4	120.4	116.9
B05	100.4	90.0	52.5	79.8	61.3	91.9	81.2	108.6	97.3	118.4	111.0	124.7	124.1
B07	101.9	101.7	96.7	88.3	96.2	91.0	104.5	99.0	101.4	101.5	113.1	121.7	117.4
B08	98.3	104.3	105.2	113.1	111.4	110.5	108.8	118.6	108.8	105.8	102.5	88.5	107.2
C	107.7	107.2	103.8	106.4	103.1	103.5	106.0	105.0	106.0	108.0	108.3	107.0	108.7
C10	93.0	86.8	86.8	90.5	88.0	94.7	93.8	85.6	90.1	92.5	95.7	89.7	90.0
C11	110.6	100.4	96.8	100.8	106.0	105.8	98.1	99.8	105.3	97.8	99.8	103.4	97.9
C12	122.7	123.0	137.4	139.9	121.3	111.1	113.5	109.6	114.6	104.5	101.7	111.7	112.5
C13	105.6	95.3	98.0	100.7	99.0	98.4	96.6	101.5	105.3	100.4	95.5	97.6	108.7
C14	100.0	98.8	94.6	103.9	96.9	97.1	98.1	100.1	99.5	96.6	104.1	100.9	102.9
C15	79.3	74.3	72.7	84.3	76.5	71.4	76.1	75.1	80.6	78.8	73.4	75.3	77.8
C16	102.0	100.5	99.4	103.7	97.0	97.8	97.4	93.1	98.5	96.7	103.9	95.9	110.4
C17	110.1	114.7	118.0	119.7	114.6	115.3	121.5	119.6	120.3	121.1	123.0	117.9	123.5
C18	96.1	98.7	99.6	115.5	111.4	99.2	104.9	95.1	101.0	96.9	94.3	105.0	113.0
C20	104.0	97.1	94.1	99.6	102.2	95.6	99.2	92.4	86.4	96.9	99.9	99.4	95.4
C21	134.5	133.3	131.1	136.3	136.1	123.4	133.5	133.9	138.8	133.2	135.7	135.4	151.9
C22	114.8	114.0	104.8	111.0	110.9	107.6	111.3	110.2	115.4	114.0	114.5	114.6	123.8
C23	118.7	107.5	108.1	116.9	110.5	106.0	107.9	116.6	113.7	110.6	111.6	112.5	111.2
C24	139.1	90.9	93.0	94.0	96.1	89.7	100.8	101.9	99.8	106.7	104.5	98.4	112.4
C25	113.3	98.6	100.1	101.5	99.5	107.5	110.6	107.0	109.2	126.4	111.9	98.8	112.1
C26	122.0	145.5	112.2	127.1	125.6	108.6	127.0	120.2	118.4	142.2	127.7	106.1	139.2
C27	126.0	125.3	121.1	121.5	115.0	122.3	118.5	125.4	119.3	118.8	121.1	114.4	126.7
C28	129.3	130.0	135.9	133.6	129.1	125.3	131.4	130.3	136.8	138.6	142.4	148.9	149.8
C29	92.5	101.3	97.5	99.2	94.3	106.0	111.2	96.8	108.5	108.1	113.6	106.5	136.1
C30	117.6	90.1	72.0	93.8	62.1	71.4	72.7	70.7	69.2	85.9	85.9	69.3	78.9
C31	124.5	124.4	117.0	121.6	111.9	116.3	115.3	119.8	120.4	122.8	124.1	118.5	125.6
C32	141.4	145.8	151.7	145.4	138.3	151.8	152.5	147.3	143.3	156.8	156.7	131.2	153.2
C33	82.5	82.8	78.5	81.5	76.1	70.6	73.5	72.5	78.4	84.3	75.6	77.9	82.8
D	118.8	99.8	105.7	98.2	97.2	107.1	114.2	114.5	115.4	110.4	109.8	113.1	116.5
D35	118.8	99.8	105.7	98.2	97.2	107.1	114.2	114.5	115.4	110.4	109.8	113.1	116.5



Table 4

Industrial Production Indices
(Working day adjusted, 2010=100)

NACE.BG - 2008 Code	2011	2012	2013												2014
	I	I	I	II	III	IV	V	VI	VII	VIII	IX	X	XI	XII	I
B_TO_E36	97.0	96.0	102.5	95.9	103.2	100.4	96.4	104.8	110.2	104.4	107.5	112.5	114.8	113.9	104.9
B	101.9	102.1	93.4	89.0	83.2	82.5	84.1	90.1	95.7	101.7	101.8	121.8	117.1	131.6	110.2
B05	117.6	111.4	110.4	86.9	54.0	55.5	40.1	72.6	72.4	106.9	101.9	145.9	125.6	145.0	134.9
B07	93.8	96.2	87.6	91.7	96.9	92.9	101.1	96.7	103.8	96.2	99.0	108.2	113.3	129.6	103.1
B08	62.6	63.9	62.8	75.1	97.1	113.5	122.4	119.1	120.0	129.7	119.1	122.3	114.5	89.0	68.6
C	89.2	88.6	93.2	92.8	103.2	106.9	105.0	111.3	113.7	104.0	109.0	114.5	114.1	103.1	94.7
C10	83.3	76.3	78.3	74.5	85.1	86.8	86.2	97.3	95.1	88.4	97.7	102.0	102.5	94.1	75.7
C11	64.4	55.9	69.9	63.9	88.1	98.0	120.9	132.5	122.0	123.9	118.3	88.9	90.5	107.9	62.1
C12	79.0	96.1	91.9	93.5	141.5	139.0	137.2	138.8	136.7	114.8	126.7	94.5	90.2	103.3	81.5
C13	82.0	73.7	89.7	91.7	109.2	111.6	111.2	111.3	101.2	81.6	101.4	100.3	98.8	85.1	93.0
C14	98.5	97.8	101.3	98.8	91.6	98.7	88.7	103.6	112.7	99.9	95.7	92.3	104.8	101.5	104.7
C15	95.8	90.0	79.2	72.0	72.7	71.8	66.6	75.5	92.1	74.7	88.1	83.0	72.7	69.0	77.8
C16	84.9	77.9	80.8	80.2	95.4	102.3	97.5	107.3	109.0	96.2	107.1	108.6	113.3	87.7	89.7
C17	115.3	67.7	102.2	108.3	124.8	126.2	120.5	121.8	129.7	118.4	118.5	116.7	117.5	111.0	115.7
C18	80.4	77.2	79.7	87.1	94.4	111.9	108.2	103.9	105.3	98.0	106.5	105.1	100.6	116.9	93.6
C20	111.6	106.2	96.9	91.2	103.8	103.2	102.8	99.2	100.0	86.8	86.3	94.5	103.3	98.4	88.9
C21	77.7	87.5	112.4	134.3	135.7	135.4	136.5	134.9	124.6	128.9	142.2	142.8	139.4	131.5	129.3
C22	85.5	83.7	95.4	95.8	104.4	108.8	110.7	116.2	122.5	113.3	123.3	127.3	122.2	102.0	103.3
C23	72.8	75.8	84.1	84.6	104.9	122.9	119.5	116.5	116.8	123.8	124.6	125.2	121.1	94.7	78.9
C24	98.1	107.2	138.1	88.4	89.8	105.4	100.9	86.5	116.8	94.6	92.0	118.2	116.8	72.6	113.8
C25	83.4	73.0	84.3	86.0	102.5	101.0	98.2	114.3	115.3	105.6	110.8	132.8	119.8	112.4	83.5
C26	97.8	121.4	108.6	132.8	114.4	126.1	125.4	113.7	126.5	105.8	121.4	142.8	135.4	123.1	124.3
C27	95.0	97.1	114.1	112.9	119.2	120.1	109.7	134.0	126.3	113.0	122.4	129.7	133.8	110.0	116.0
C28	91.3	106.2	110.7	124.2	149.1	133.5	130.1	137.2	139.8	118.5	136.2	142.2	147.0	143.1	128.7
C29	98.5	75.8	87.5	96.1	100.5	102.4	96.2	114.3	113.5	82.9	111.9	117.2	123.3	91.6	130.0
C30	68.1	64.4	78.0	77.7	73.8	88.2	77.7	86.7	71.6	63.9	65.2	82.0	79.4	74.8	53.1
C31	89.6	90.3	104.5	108.1	116.3	116.4	109.9	122.2	118.6	120.8	124.0	135.2	135.1	124.2	105.6
C32	96.0	111.9	115.3	125.3	150.4	141.0	141.4	172.9	153.3	149.9	153.5	185.1	165.5	114.9	125.0
C33	69.8	61.1	58.1	71.6	77.7	74.7	70.7	71.3	71.2	71.6	80.8	89.9	83.8	110.3	58.4
D	120.5	119.7	138.8	110.3	115.2	87.8	78.0	92.8	107.1	106.3	104.0	105.1	118.9	139.7	136.6
D35	120.5	119.7	138.8	110.3	115.2	87.8	78.0	92.8	107.1	106.3	104.0	105.1	118.9	139.7	136.6