

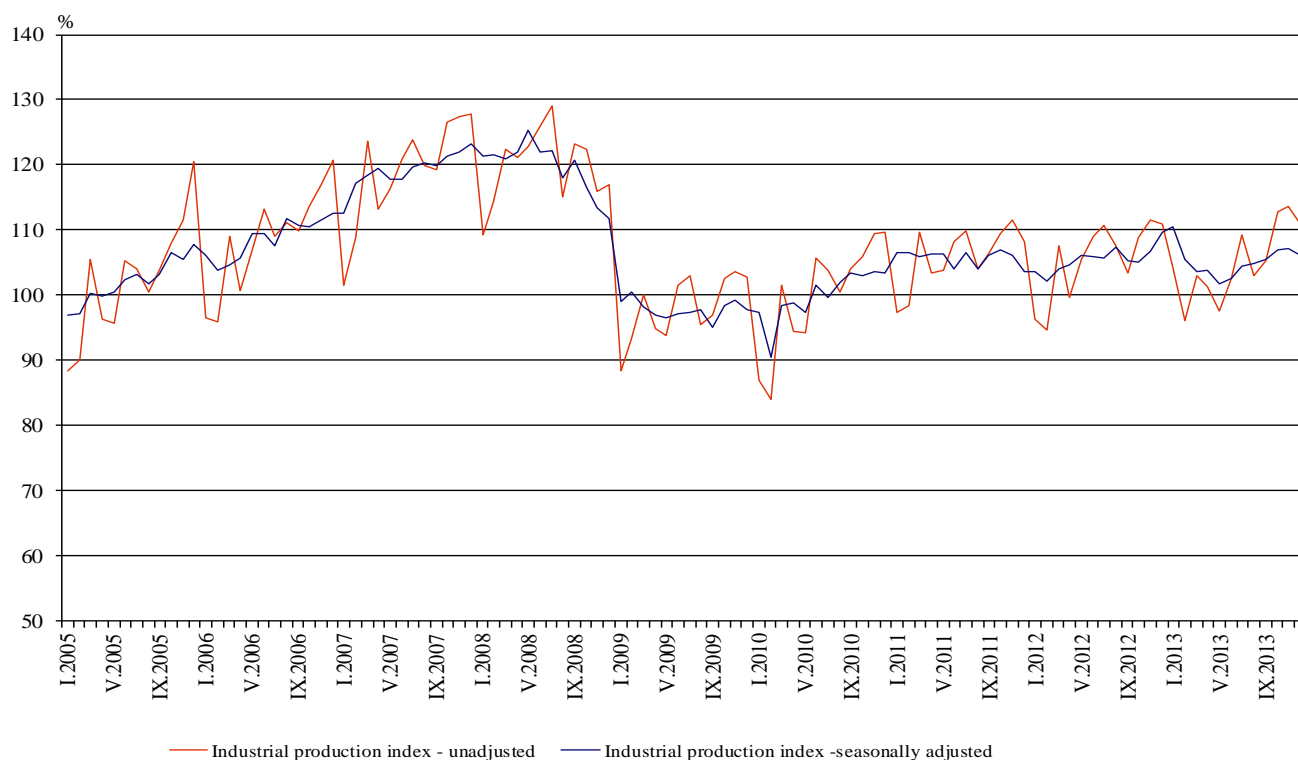


INDUSTRIAL PRODUCTION INDICES IN DECEMBER 2013¹

The preliminary data showed that the Industrial Production Index², seasonally adjusted³, decreased by 1.0% in December 2013 as compared to November 2013.

In December 2013 working day adjusted⁴ Industrial Production Index fell by 1.0% in comparison with the same month of 2012.

Figure 1. Industrial Production Indices (2010=100)



¹ December 2013 data are preliminary.

² Monthly Industrial Production and Industrial turnover indices measure changes in production and turnover values of industrial enterprises. This information can be used to assess the current economic development and for short-term forecasts. Indices do not measure the actual production level, it aims to measure the average change in value of production between two points of time. Indices are compiled on the basis of information collected through representative sampling survey on industrial enterprises. The sample covers enterprises with annual turnover more than 97% of total turnover in industry.

Industrial production indices are calculated at constant base year that is to say they are weighted with the structure of the value added at factor costs in the base year.

³ Seasonal adjustment is a statistical method, which eliminates the seasonal component of time series.

⁴ Working day adjustment is an adjustment for variations caused by calendar effects, different number of calendar and working days in the months, national holidays and outliers (for example the presence of more non-working days in May could contribute to the decline in the production in some activities).

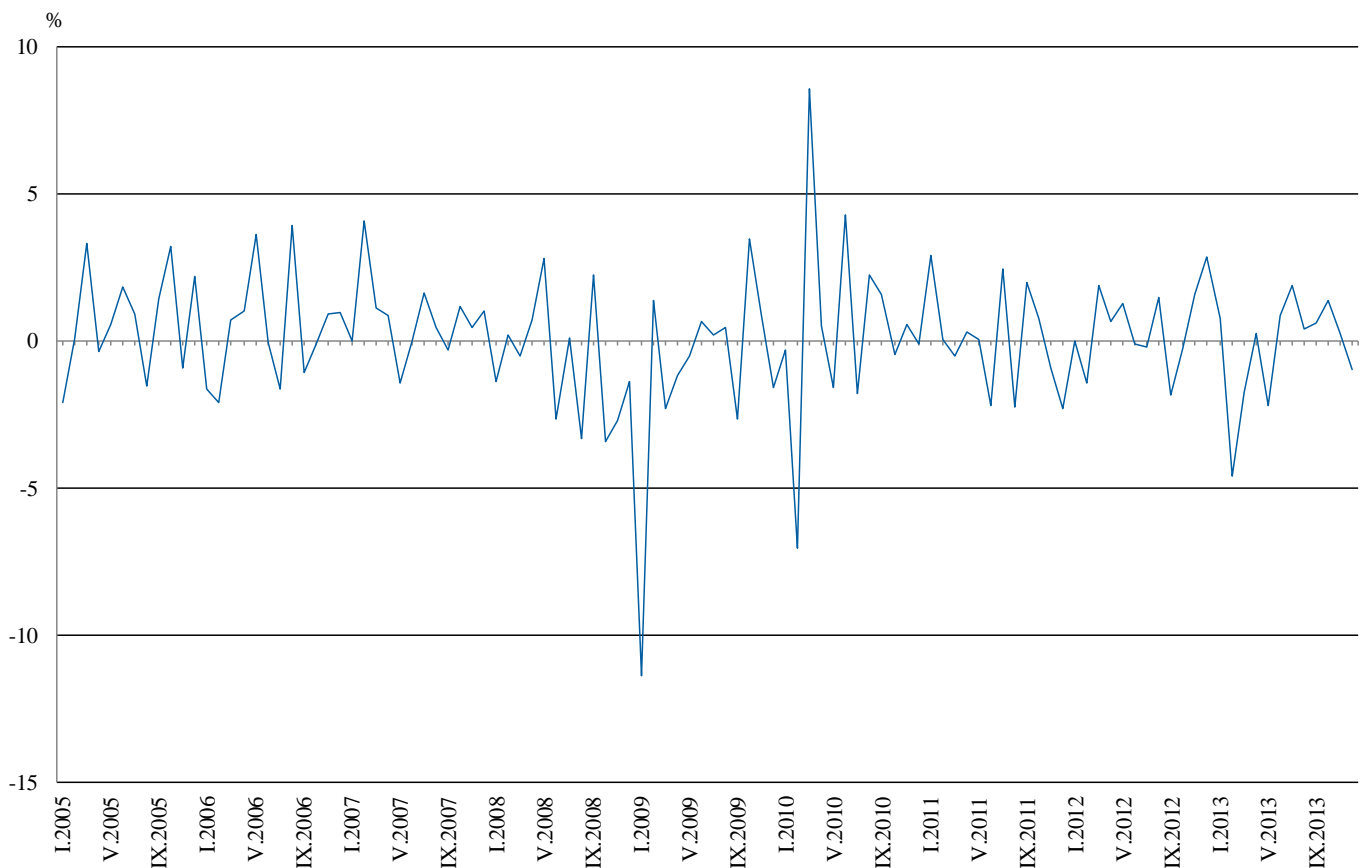


Monthly comparisons

In December 2013 as compared to November 2013, the seasonally adjusted Industrial Production Index decreased in the manufacturing by 1.5%, while increases were registered in the mining and quarrying industry by 14.6% and in the electricity, gas, steam and air conditioning supply by 2.3%.

The most significant decreases of production in the manufacturing were registered in the manufacture of computer, electronic and optical products by 22.0%, in the manufacture of fabricated metal products, except machinery and equipment by 21.5%, in the manufacture of other transport equipment by 13.1%, in the manufacture of motor vehicles, trailers and semi-trailers by 12.3%, in the manufacture of wood and of products of wood and cork, except furniture; manufacture of articles of straw and plaiting materials by 10.8% There was increase in the manufacture of tobacco products by 17.8%, in the repair and installation of machinery and equipment by 8.9%, in the printing and reproduction of recorded media by 8.6%.

Figure 2. Changes of Industrial Production Indices compared to the previous month (Seasonally adjusted)



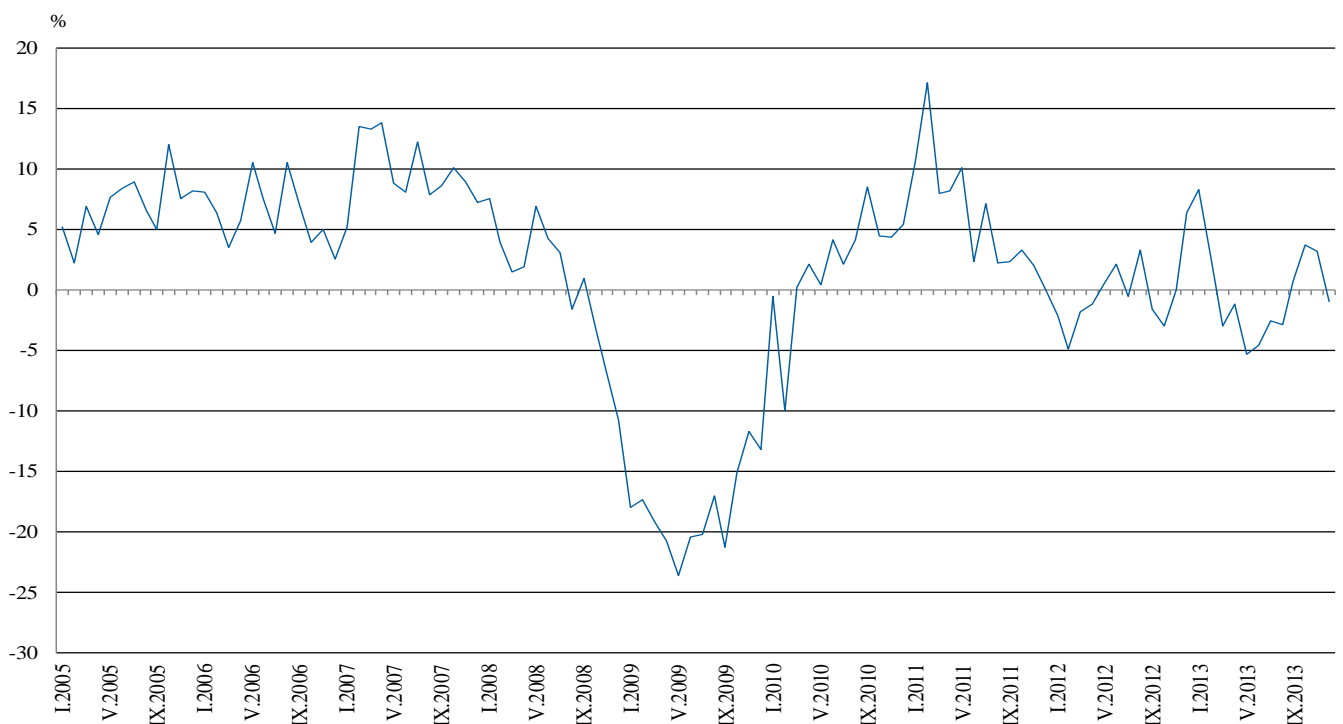


Annual comparisons

On annual basis in December 2013 Industrial Production Index, calculated from working day adjusted data decreased in the electricity, gas, steam and air conditioning supply by 11.5%, while increases were registered in the mining and quarrying industry by 12.8% and in the manufacturing by 1.9%.

In the manufacturing, the more significant increases compared to the same month of the previous year were seen in the manufacture of beverages by 18.7%, in the manufacture of rubber and plastic products and in the in the manufacture of motor vehicles, trailers and semi-trailers by 16.3%, in the manufacture of machinery and equipment by 14.9%. Decreases were registered, in the manufacture of other transport equipment by 21.9%, in the repair and installation of machinery and equipment by 13.2%, in the manufacture of fabricated metal products, except machinery and equipment by 8.9%, in the manufacture of electrical equipment by 7.8%.

Figure 3. Changes of Industrial Production Indices compared to the same month of the previous year (Working day adjusted)



The final data on Industrial Production and Turnover Indices for November 2013 can be found on the NSI web-site: (<http://www.nsi.bg/otrasalen.php?otr=46>).

Changes of Industrial Production Indices compared to the previous month¹
(Per cent)

Economic Activities	NACE.BG -2008	2013					
		VII	VIII	IX	X	XI	XII
Industry	B_TO_E36	1.9	0.4	0.6	1.4	0.2	-1.0
Mining and quarrying	B	1.3	9.0	-3.5	7.7	-1.3	14.6
of which:							
Mining of coal and lignite	B05	-11.3	32.1	-4.5	21.2	-11.2	18.1
Mining of metal ores	B07	7.9	-3.7	1.3	9.2	3.6	18.3
Other mining and quarrying	B08	-1.4	8.3	-7.8	-1.0	-6.4	-14.7
Manufacturing	C	2.7	-0.4	1.0	2.2	-0.1	-1.5
of which:							
Manufacture of food products	C10	-0.5	-8.9	5.3	2.6	2.9	-5.3
Manufacture of beverages	C11	-7.8	4.8	2.5	-5.8	3.4	4.2
Manufacture of tobacco products	C12	2.8	10.0	-10.8	-23.9	2.9	17.8
Manufacture of textiles	C13	-1.7	7.7	1.5	0.0	-5.1	-3.4
Manufacture of wearing apparel	C14	2.4	3.2	-3.3	0.0	7.2	-3.5
Manufacture of leather and related products	C15	3.4	0.9	2.8	1.3	-3.0	-1.0
Manufacture of wood and of products of wood and cork, except furniture; manufacture of articles of straw and plaiting materials	C16	0.0	-2.8	1.5	-0.3	9.4	-10.8
Manufacture of paper and paper products	C17	5.0	0.2	0.6	9.1	1.0	-3.9
Printing and reproduction of recorded media	C18	5.2	-6.3	3.3	-4.0	-2.4	8.6
Manufacture of chemicals and chemical products	C20	2.6	-5.0	-8.4	13.2	3.8	-3.1
Manufacture of basic pharmaceutical products and pharmaceutical preparations	C21	6.2	-0.1	2.9	-2.8	1.6	0.2
Manufacture of rubber and plastic products	C22	4.1	-3.0	6.1	-1.8	-0.7	-1.7
Manufacture of other non-metallic mineral products	C23	2.2	8.0	-4.1	-0.1	2.6	-2.6
Manufacture of basic metals	C24	5.5	2.8	2.9	1.8	-2.0	-2.7
Manufacture of fabricated metal products, except machinery and equipment	C25	5.6	-4.7	-2.8	28.4	-12.6	-21.5
Manufacture of computer, electronic and optical products	C26	21.9	-8.1	-2.8	21.3	-7.3	-22.0
Manufacture of electrical equipment	C27	-4.2	7.7	-7.5	1.0	2.9	-5.1
Manufacture of machinery and equipment n.e.c.	C28	4.8	-0.7	4.4	1.2	1.9	2.0
Manufacture of motor vehicles, trailers and semi-trailers	C29	3.2	-8.5	9.2	-0.9	4.6	-12.3
Manufacture of other transport equipment	C30	-0.9	-4.1	-1.0	30.9	-6.1	-13.1
Manufacture of furniture	C31	-1.3	4.5	0.4	3.7	0.0	-7.1
Other manufacturing	C32	1.4	-2.0	-7.1	12.6	2.3	-22.6
Repair and installation of machinery and equipment	C32	4.3	0.0	6.9	7.2	-9.6	8.9
Electricity, gas, steam and air conditioning supply	D	1.0	-1.0	0.8	-2.8	1.3	2.3
Electricity, gas, steam and air conditioning supply	D35	1.0	-1.0	0.8	-2.8	1.3	2.3

¹ Seasonally adjusted.



Table 2

Changes of Industrial Production Indices compared to the same month of the previous year¹
(Per cent)

Economic Activities	NACE.BG-2008	2013					
		VII	VIII	IX	X	XI	XII
Industry	B_TO_E36	-2.6	-2.9	0.8	3.6	3.2	-1.0
Mining and quarrying	B	-16.3	-7.4	-11.8	-2.0	28.3	12.8
of which:							
Mining of coal and lignite	B05	-32.8	-4.5	-14.5	13.2	25.3	11.9
Mining of metal ores	B07	5.1	-2.1	0.7	-0.3	42.8	17.4
Other mining and quarrying	B08	-23.3	-2.4	-14.7	-13.6	-19.5	-20.6
Manufacturing	C	1.3	-0.5	2.5	5.6	4.7	1.9
of which:							
Manufacture of food products	C10	-0.7	-10.5	-0.9	0.0	3.9	-1.2
Manufacture of beverages	C11	-5.6	3.1	5.6	-6.1	2.7	18.7
Manufacture of tobacco products	C12	-14.2	11.5	-9.3	-5.6	5.2	-6.1
Manufacture of textiles	C13	20.0	22.1	21.5	19.1	5.2	-6.8
Manufacture of wearing apparel	C14	4.6	8.1	7.1	5.2	11.8	5.4
Manufacture of leather and related products	C15	-16.7	-19.5	-5.0	10.0	-4.9	2.4
Manufacture of wood and of products of wood and cork, except furniture; manufacture of articles of straw and plaiting materials	C16	-7.0	-5.7	0.1	-5.6	4.1	1.1
Manufacture of paper and paper products	C17	7.6	11.5	7.8	18.1	16.5	8.5
Printing and reproduction of recorded media	C18	20.1	18.0	18.9	12.3	-10.2	6.7
Manufacture of chemicals and chemical products	C20	1.6	-7.4	-16.9	-1.3	4.0	2.9
Manufacture of basic pharmaceutical products and pharmaceutical preparations	C21	-5.8	5.4	3.5	4.6	10.7	9.9
Manufacture of rubber and plastic products	C22	10.2	-0.3	9.5	7.8	2.3	16.3
Manufacture of other non-metallic mineral products	C23	-0.3	9.8	7.5	0.2	-2.4	6.1
Manufacture of basic metals	C24	3.2	17.7	4.8	21.1	6.2	8.2
Manufacture of fabricated metal products, except machinery and equipment	C25	18.9	8.4	10.9	27.8	13.8	-8.9
Manufacture of computer, electronic and optical products	C26	18.8	5.7	-3.7	35.2	0.8	-6.2
Manufacture of electrical equipment	C27	2.4	18.0	4.1	3.2	8.6	-7.8
Manufacture of machinery and equipment n.e.c.	C28	5.6	-2.1	13.0	14.7	13.8	14.9
Manufacture of motor vehicles, trailers and semi-trailers	C29	28.9	15.7	17.5	17.2	18.8	16.3
Manufacture of other transport equipment	C30	-22.7	-10.0	-18.0	-15.6	14.6	-21.9
Manufacture of furniture	C31	0.1	3.6	1.0	8.4	7.9	-0.6
Other manufacturing	C32	26.3	9.2	0.8	14.5	33.5	3.1
Repair and installation of machinery and equipment	C33	-9.9	-25.4	9.0	-9.2	-27.6	-13.2
Electricity, gas, steam and air conditioning supply	D	-8.0	-9.2	1.1	-1.7	-9.5	-11.5
Electricity, gas, steam and air conditioning supply	D35	-8.0	-9.2	1.1	-1.7	-9.5	-11.5

¹ Working day adjusted.



Table 3

Industrial Production Indices
(Seasonally adjusted, 2010=100)

NACE.BG - 2008 Code	2012	2013											
	XII	I	II	III	IV	V	VI	VII	VIII	IX	X	XI	XII
B_TO_E36	109.7	110.6	105.5	103.7	103.9	101.7	102.5	104.4	104.9	105.5	107.0	107.2	106.2
B	109.9	102.0	96.4	86.1	86.5	87.6	93.0	94.2	102.8	99.2	106.8	105.5	120.9
B05	116.1	103.6	91.0	61.2	80.4	61.6	89.3	79.2	104.6	99.9	121.1	107.5	127.1
B07	112.7	91.1	94.6	98.7	88.2	97.9	93.9	101.3	97.6	98.8	108.0	111.8	132.3
B08	103.3	97.3	101.3	106.4	112.7	116.8	109.5	108.0	116.9	107.8	106.7	99.9	85.2
C	105.6	109.2	107.4	104.5	106.6	102.6	103.4	106.2	105.8	106.8	109.2	109.1	107.4
C10	91.3	92.9	87.1	86.7	91.2	87.4	94.5	94.0	85.6	90.2	92.5	95.2	90.2
C11	89.6	108.5	97.8	96.6	99.8	106.3	104.9	96.6	101.3	103.8	97.8	101.1	105.4
C12	115.4	119.7	127.5	146.6	150.5	130.0	118.8	122.2	134.5	120.0	91.3	93.9	110.7
C13	102.8	107.4	95.7	99.2	101.3	98.8	97.6	95.9	103.3	104.9	104.9	99.5	96.2
C14	96.0	100.4	99.7	97.0	103.7	96.0	95.8	98.1	101.3	97.9	97.9	105.0	101.3
C15	73.7	80.2	76.0	76.8	83.4	74.1	72.0	74.4	75.1	77.2	78.2	75.9	75.1
C16	91.0	104.2	99.9	102.5	107.3	98.5	97.0	97.0	94.3	95.7	95.4	104.5	93.1
C17	110.2	110.0	117.6	120.0	119.9	116.4	111.6	117.2	117.4	118.1	128.9	130.1	125.0
C18	93.6	94.8	95.8	99.9	115.6	110.0	98.8	104.0	97.5	100.7	96.7	94.4	102.5
C20	95.2	104.2	97.0	95.4	99.2	103.9	96.3	98.8	93.9	86.0	97.4	101.1	97.9
C21	122.4	139.9	136.1	135.1	140.6	139.4	125.7	133.5	133.3	137.1	133.3	135.4	135.7
C22	95.4	115.8	117.2	105.7	115.8	110.2	107.8	112.2	108.8	115.5	113.4	112.6	110.7
C23	105.6	117.4	108.8	108.7	114.7	111.3	105.8	108.1	116.8	112.0	111.9	114.7	111.7
C24	90.4	148.5	91.0	91.4	93.2	94.1	92.7	97.8	100.5	103.5	105.4	103.3	100.4
C25	102.4	111.7	97.1	103.8	99.7	97.1	105.1	110.9	105.7	102.7	131.9	115.3	90.6
C26	105.1	124.1	143.5	115.9	132.9	121.9	106.7	130.0	119.4	116.1	140.9	130.7	101.9
C27	141.0	130.9	125.4	121.8	121.9	127.0	137.6	131.8	141.8	131.2	132.5	136.4	129.5
C28	125.1	132.8	130.6	136.6	138.1	129.6	124.8	130.8	129.9	135.6	137.3	139.9	142.7
C29	81.6	96.6	103.4	98.2	101.2	92.6	105.1	108.5	99.3	108.4	107.5	112.4	98.6
C30	95.3	122.1	100.0	71.6	85.4	64.2	71.6	70.9	68.0	67.3	88.1	82.7	71.9
C31	116.9	126.8	126.5	117.2	123.0	113.0	116.4	114.9	120.1	120.7	125.1	125.2	116.3
C32	120.5	141.9	148.6	156.7	146.3	137.2	151.9	154.0	151.0	140.3	157.9	161.6	125.0
C33	96.4	85.6	86.0	79.7	83.5	73.8	69.4	72.4	72.4	77.4	83.0	75.0	81.7
D	124.2	122.9	102.1	106.0	98.8	102.6	104.5	105.5	104.4	105.2	102.3	103.6	106.0
D35	124.2	122.9	102.1	106.0	98.8	102.6	104.5	105.5	104.4	105.2	102.3	103.6	106.0



Table 4

Industrial Production Indices
(Working day adjusted, 2010=100)

NACE.BG - 2008 Code	2010	2011	2012	2013											
	XII	XII	XII	I	II	III	IV	V	VI	VII	VIII	IX	X	XI	XII
B_TO_E36	106.9	106.9	113.7	103.6	96.3	103.5	100.7	98.2	104.5	107.9	103.2	105.4	111.5	114.3	112.5
B	103.8	125.2	117.9	95.3	89.9	83.5	80.9	83.1	89.3	94.3	101.6	102.7	121.8	114.8	132.9
B05	110.5	130.6	128.9	110.4	87.8	49.9	58.0	43.1	73.3	74.5	103.2	105.7	147.9	121.4	144.2
B07	96.6	122.9	112.7	91.1	94.6	98.7	88.2	97.9	93.9	101.3	97.6	98.8	108.0	111.8	132.3
B08	106.3	101.6	109.9	62.7	72.6	95.9	109.7	123.9	119.7	119.6	128.5	119.1	123.7	112.7	87.3
C	103.3	99.5	101.7	93.5	92.6	103.5	108.1	105.2	111.7	114.2	106.1	109.4	115.4	115.6	103.7
C10	104.3	96.5	95.6	77.7	75.1	85.4	87.8	85.8	97.1	95.5	88.5	97.7	101.8	101.8	94.4
C11	110.8	101.3	93.0	69.4	63.2	89.4	97.0	119.9	131.8	119.8	125.6	115.8	88.5	92.0	110.4
C12	103.6	107.5	111.4	89.5	95.2	142.2	141.6	136.6	139.8	137.5	137.1	126.7	93.0	90.7	104.7
C13	81.3	80.7	90.8	91.7	91.8	110.5	111.8	110.7	111.0	100.2	83.0	100.0	106.2	105.7	84.6
C14	104.4	96.7	97.5	101.7	99.1	93.8	99.2	87.3	102.9	111.9	103.0	94.2	91.8	107.6	102.8
C15	89.8	88.9	65.9	79.4	71.8	75.3	71.7	65.4	75.5	89.6	77.8	85.4	81.8	75.8	67.5
C16	95.7	101.6	86.6	80.1	78.9	96.8	104.8	98.9	106.4	108.7	97.3	105.6	108.0	116.1	87.5
C17	103.3	56.5	105.3	100.3	110.6	126.9	125.9	121.2	123.5	129.4	118.7	117.6	116.0	119.3	114.3
C18	108.7	105.5	107.6	79.4	84.7	95.0	111.9	106.9	103.2	104.1	100.1	105.9	104.9	101.2	114.9
C20	94.5	111.2	94.2	97.2	91.2	105.2	102.6	104.3	99.8	99.3	88.3	85.8	94.7	104.7	96.9
C21	99.7	128.0	120.1	112.9	137.4	139.2	140.1	139.3	137.4	125.2	127.8	139.6	142.6	139.9	131.9
C22	97.6	85.4	86.7	93.8	98.4	104.2	113.6	110.1	116.4	123.4	111.9	123.7	127.0	121.4	100.9
C23	88.6	91.8	88.6	83.1	86.9	104.7	120.2	120.7	116.8	116.6	123.7	122.2	126.4	126.3	94.0
C24	81.1	78.0	68.3	139.2	88.8	89.0	104.4	101.5	87.2	116.8	94.9	93.8	118.1	116.6	73.9
C25	110.4	109.7	120.7	81.5	85.5	106.9	99.3	96.3	113.3	115.7	106.7	105.6	134.0	123.8	109.9
C26	139.5	127.1	129.9	106.2	127.1	118.0	130.7	122.0	111.8	129.3	106.8	120.8	141.9	138.1	121.9
C27	96.4	103.5	136.3	114.0	111.1	118.3	121.0	123.1	152.9	139.7	130.5	136.6	145.4	152.6	125.6
C28	103.7	102.9	119.2	112.7	123.8	147.1	138.4	130.8	136.9	139.7	119.6	136.6	141.9	144.5	136.9
C29	98.6	80.2	75.6	89.8	96.8	101.7	104.8	93.9	112.8	110.7	86.6	112.5	116.2	125.2	87.9
C30	116.1	69.3	102.1	77.6	82.0	71.8	79.3	79.2	85.8	72.2	62.2	63.5	84.3	77.4	79.7
C31	107.5	116.4	123.8	105.3	110.0	116.0	118.2	111.0	122.9	117.7	121.1	123.6	136.8	135.9	123.1
C32	99.7	89.2	109.5	115.1	128.2	154.6	141.3	140.3	172.6	153.6	154.4	150.5	183.6	171.8	112.9
C33	148.7	123.8	133.0	58.5	72.2	78.1	76.2	68.3	70.0	70.9	72.5	80.2	89.5	84.7	115.4
D	122.7	127.9	149.7	141.9	112.3	115.5	89.2	84.4	89.6	96.0	94.4	93.2	96.7	112.8	132.4
D35	122.7	127.9	149.7	141.9	112.3	115.5	89.2	84.4	89.6	96.0	94.4	93.2	96.7	112.8	132.4