

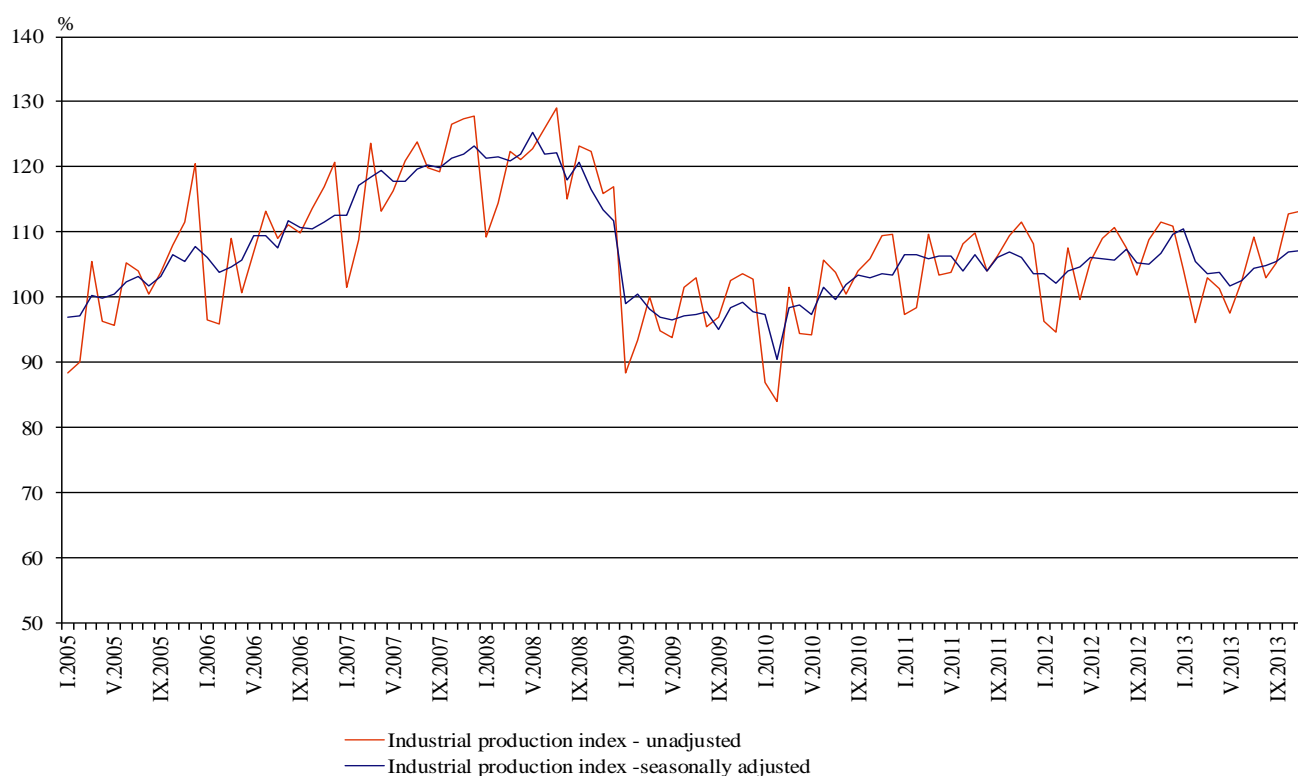


## INDUSTRIAL PRODUCTION INDICES IN NOVEMBER 2013<sup>1</sup>

The preliminary data showed that the Industrial Production Index<sup>2</sup>, seasonally adjusted<sup>3</sup>, increased by 0.2% in November 2013 as compared to October 2013.

In November 2013 working day adjusted<sup>4</sup> Industrial Production Index rose by 2.8% in comparison with the same month of 2012.

**Figure 1. Industrial Production Indices (2010=100)**



<sup>1</sup> November 2013 data are preliminary.

<sup>2</sup> Monthly Industrial Production and Industrial turnover indices measure changes in production and turnover values of industrial enterprises. This information can be used to assess the current economic development and for short-term forecasts. Indices do not measure the actual production level, it aims to measure the average change in value of production between two points of time. Indices are compiled on the base of information collected through representative sampling survey on industrial enterprises. The sample covers enterprises with annual turnover more than 97% of total turnover in industry.

Industrial production indices are calculated at constant base year that is to say they are weighted with the structure of the value added at factor costs in the base year.

<sup>3</sup> Seasonal adjustment is a statistical method, which eliminates the seasonal component of time series.

<sup>4</sup> Working day adjustment is an adjustment for variations caused by calendar effects, different number of calendar and working days in the months, national holidays and outliers (for example the presence of more non-working days in May could contribute to the decline in the production in some activities).

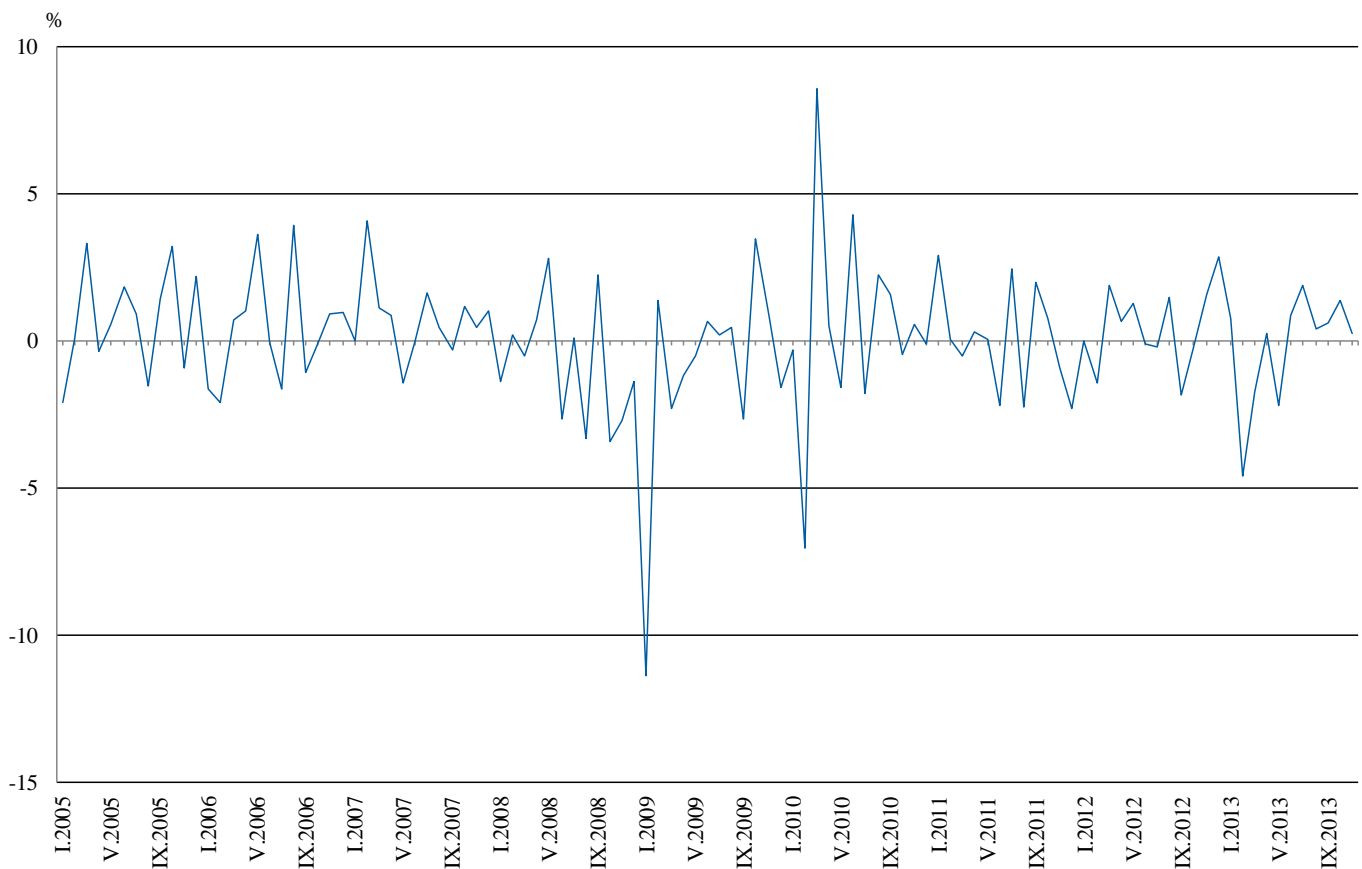


## Monthly comparisons

In November 2013 as compared to October 2013, the seasonally adjusted Industrial Production Index increased by 0.4% in the manufacturing, while decreases were registered in the mining and quarrying industry by 1.8% and in the electricity, gas, steam and air conditioning supply by 0.8%.

The most significant increases of production in the manufacturing were registered in the manufacture of wood and of products of wood and cork, except furniture; manufacture of articles of straw and plaiting materials by 10.8%, in the manufacture of wearing apparel by 7.6%, in the manufacture of motor vehicles, trailers and semi-trailers by 5.2%, in the manufacture of chemicals and chemical products by 4.1%, in the manufacture of electrical equipment by 4.0%. There was decrease in the manufacture of fabricated metal products, except machinery and equipment 13.3%, in the repair and installation of machinery and equipment by 12.2%, in the manufacture of computer, electronic and optical products by 6.3%, in the manufacture of other transport equipment by 5.7%.

**Figure 2. Changes of Industrial Production Indices compared to the previous month (Seasonally adjusted)**



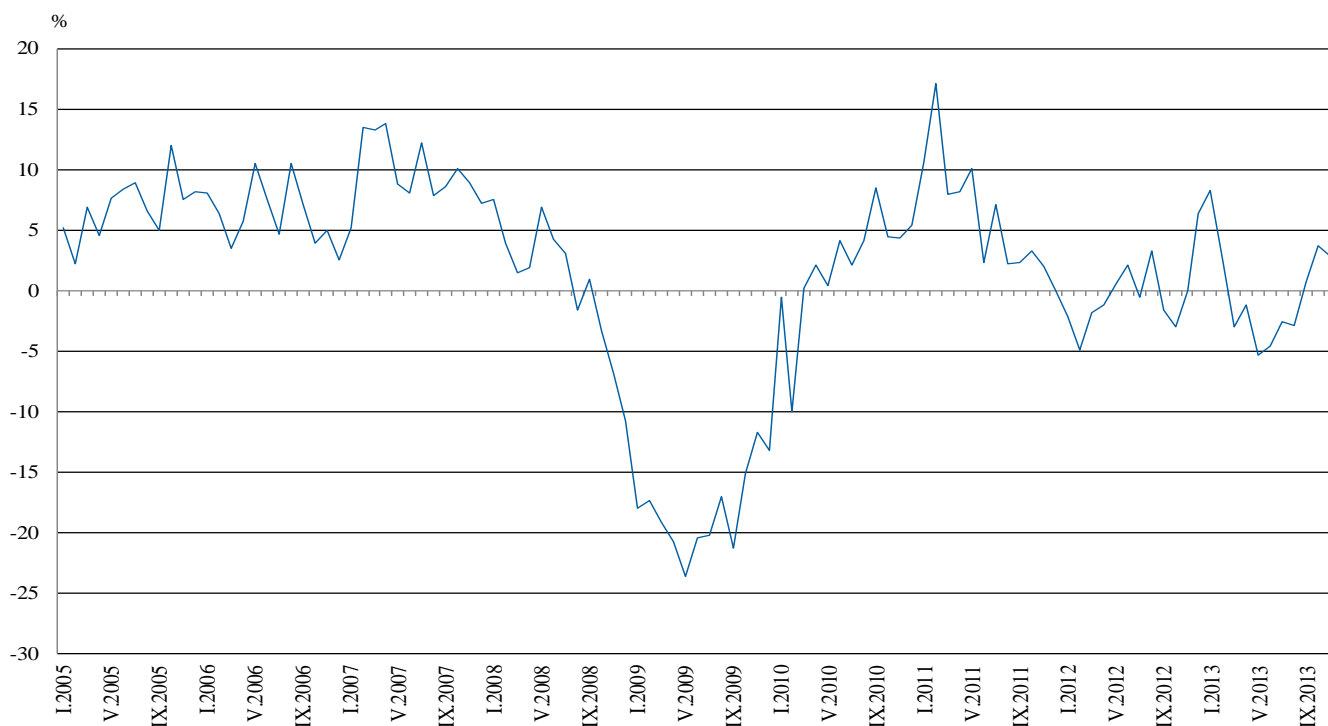


## Annual comparisons

On annual basis in November 2013 Industrial Production Index, calculated from working day adjusted data increased in the mining and quarrying industry by 28.4% and in the manufacturing by 4.7%, while in the electricity, gas, steam and air conditioning supply a decrease by 11.4% was registered.

In the manufacturing, the more significant increases compared to the same month of the previous year were seen in the manufacture of motor vehicles, trailers and semi-trailers by 17.9%, in the manufacture of paper and paper products by 16.8%, in the manufacture of other transport equipment by 14.6%, in the manufacture of machinery and equipment by 13.3%, in the manufacture of basic pharmaceutical products and pharmaceutical preparations by 12.9%, in the manufacture of fabricated metal products, except machinery and equipment by 12.2%. Decreases were registered, in the repair and installation of machinery and equipment by 29.8%, in the printing and reproduction of recorded media by 10.5%, in the manufacture of leather and related products by 3.4%.

**Figure 3. Changes of Industrial Production Indices compared to the same month of the previous year  
(Working day adjusted)**



The final data on Industrial Production and Turnover Indices for October 2013 can be found on NSI web-site: (<http://www.nsi.bg/otrasalen.php?otr=46>).

Changes of Industrial Production Indices compared to the previous month<sup>1</sup>

(Per cent)

Economic Activities	NACE.BG - 2008 Code	2013					
		VI	VII	VIII	IX	X	XI
<b>Industry</b>	<b>B_TO_E36</b>	<b>0.8</b>	<b>1.9</b>	<b>0.4</b>	<b>0.6</b>	<b>1.4</b>	<b>0.2</b>
<b>Mining and quarrying</b>	<b>B</b>	<b>6.1</b>	<b>1.3</b>	<b>9.0</b>	<b>-3.5</b>	<b>7.7</b>	<b>-1.8</b>
of which:							
Mining of coal and lignite	B05	44.9	-11.3	32.1	-4.5	21.2	-12.0
Mining of metal ores	B07	-4.1	7.9	-3.7	1.3	9.2	3.7
Other mining and quarrying	B08	-6.3	-1.4	8.3	-7.8	-1.0	-5.1
<b>Manufacturing</b>	<b>C</b>	<b>0.8</b>	<b>2.7</b>	<b>-0.4</b>	<b>1.0</b>	<b>2.2</b>	<b>0.4</b>
of which:							
Manufacture of food products	C10	8.1	-0.5	-8.9	5.3	2.6	3.2
Manufacture of beverages	C11	-1.3	-7.8	4.8	2.5	-5.8	3.0
Manufacture of tobacco products	C12	-8.6	2.8	10.0	-10.8	-23.9	2.0
Manufacture of textiles	C13	-1.2	-1.7	7.7	1.5	0.0	-4.5
Manufacture of wearing apparel	C14	-0.2	2.4	3.2	-3.3	0.0	7.6
Manufacture of leather and related products	C15	-2.8	3.4	0.9	2.8	1.3	-2.0
Manufacture of wood and of products of wood and cork, except furniture; manufacture of articles of straw and plaiting materials	C16	-1.5	0.0	-2.8	1.5	-0.3	10.8
Manufacture of paper and paper products	C17	-4.1	5.0	0.2	0.6	9.1	1.8
Printing and reproduction of recorded media	C18	-10.1	5.2	-6.3	3.3	-4.0	-2.8
Manufacture of chemicals and chemical products	C20	-7.3	2.6	-5.0	-8.4	13.2	4.1
Manufacture of basic pharmaceutical products and pharmaceutical preparations	C21	-9.8	6.2	-0.1	2.9	-2.8	3.2
Manufacture of rubber and plastic products	C22	-2.2	4.1	-3.0	6.1	-1.8	-0.3
Manufacture of other non-metallic mineral products	C23	-4.9	2.2	8.0	-4.1	-0.1	2.9
Manufacture of basic metals	C24	-1.5	5.5	2.8	2.9	1.8	0.1
Manufacture of fabricated metal products, except machinery and equipment	C25	8.2	5.6	-4.7	-2.8	28.4	-13.3
Manufacture of computer, electronic and optical products	C26	-12.5	21.9	-8.1	-2.8	21.3	-6.3
Manufacture of electrical equipment	C27	8.3	-4.2	7.7	-7.5	1.0	4.0
Manufacture of machinery and equipment n.e.c.	C28	-3.7	4.8	-0.7	4.4	1.2	1.3
Manufacture of motor vehicles, trailers and semi-trailers	C29	13.5	3.2	-8.5	9.2	-0.9	5.2
Manufacture of other transport equipment	C30	11.6	-0.9	-4.1	-1.0	30.9	-5.7
Manufacture of furniture	C31	3.0	-1.3	4.5	0.4	3.7	0.0
Other manufacturing	C32	10.6	1.4	-2.0	-7.1	12.6	4.8
Repair and installation of machinery and equipment	C32	-6.1	4.3	0.0	6.9	7.2	-12.2
<b>Electricity, gas, steam and air conditioning supply</b>	<b>D</b>	<b>1.8</b>	<b>1.0</b>	<b>-1.0</b>	<b>0.8</b>	<b>-2.8</b>	<b>-0.8</b>
Electricity, gas, steam and air conditioning supply	D35	1.8	1.0	-1.0	0.8	-2.8	-0.8

<sup>1</sup> Seasonally adjusted.



**Table 2**

**Changes of Industrial Production Indices compared to the same month of the previous year<sup>1</sup>**  
**(Per cent)**

Economic Activities	NACE.BG -2008 Code	2013					
		VI	VII	VIII	IX	X	XI
<b>Industry</b>	<b>B_TO_E36</b>	<b>-4.6</b>	<b>-2.6</b>	<b>-2.9</b>	<b>0.8</b>	<b>3.6</b>	<b>2.8</b>
<b>Mining and quarrying</b>	<b>B</b>	<b>-11.6</b>	<b>-16.3</b>	<b>-7.4</b>	<b>-11.8</b>	<b>-2.0</b>	<b>28.4</b>
of which:							
Mining of coal and lignite	B05	-0.5	-32.8	-4.5	-14.5	13.2	25.4
Mining of metal ores	B07	-16.5	5.1	-2.1	0.7	-0.3	42.9
Other mining and quarrying	B08	-8.9	-23.3	-2.4	-14.7	-13.6	-19.2
<b>Manufacturing</b>	<b>C</b>	<b>-4.7</b>	<b>1.3</b>	<b>-0.5</b>	<b>2.5</b>	<b>5.6</b>	<b>4.7</b>
of which:							
Manufacture of food products	C10	1.3	-0.7	-10.5	-0.9	0.0	4.1
Manufacture of beverages	C11	5.7	-5.6	3.1	5.6	-6.1	3.1
Manufacture of tobacco products	C12	-19.2	-14.2	11.5	-9.3	-5.6	5.2
Manufacture of textiles	C13	18.3	20.0	22.1	21.5	19.1	5.3
Manufacture of wearing apparel	C14	-5.0	4.6	8.1	7.1	5.2	11.9
Manufacture of leather and related products	C15	-30.1	-16.7	-19.5	-5.0	10.0	-3.4
Manufacture of wood and of products of wood and cork, except furniture; manufacture of articles of straw and plaiting materials	C16	-7.1	-7.0	-5.7	0.1	-5.6	4.8
Manufacture of paper and paper products	C17	7.0	7.6	11.5	7.8	18.1	16.8
Printing and reproduction of recorded media	C18	9.7	20.1	18.0	18.9	12.3	-10.5
Manufacture of chemicals and chemical products	C20	-10.8	1.6	-7.4	-16.9	-1.3	4.3
Manufacture of basic pharmaceutical products and pharmaceutical preparations	C21	-6.0	-5.8	5.4	3.5	4.6	12.9
Manufacture of rubber and plastic products	C22	-1.3	10.2	-0.3	9.5	7.8	2.5
Manufacture of other non-metallic mineral products	C23	0.0	-0.3	9.8	7.5	0.2	-2.2
Manufacture of basic metals	C24	-12.4	3.2	17.7	4.8	21.1	6.2
Manufacture of fabricated metal products, except machinery and equipment	C25	8.0	18.9	8.4	10.9	27.8	12.2
Manufacture of computer, electronic and optical products	C26	-25.4	18.8	5.7	-3.7	35.2	1.3
Manufacture of electrical equipment	C27	6.7	2.4	18.0	4.1	3.2	9.0
Manufacture of machinery and equipment n.e.c.	C28	-4.8	5.6	-2.1	13.0	14.7	13.3
Manufacture of motor vehicles, trailers and semi-trailers	C29	25.5	28.9	15.7	17.5	17.2	17.9
Manufacture of other transport equipment	C30	-50.5	-22.7	-10.0	-18.0	-15.6	14.6
Manufacture of furniture	C31	1.6	0.1	3.6	1.0	8.4	7.4
Other manufacturing	C32	23.2	26.3	9.2	0.8	14.5	36.5
Repair and installation of machinery and equipment	C33	-25.4	-9.9	-25.4	9.0	-9.2	-29.8
<b>Electricity, gas, steam and air conditioning supply</b>	<b>D</b>	<b>0.3</b>	<b>-8.0</b>	<b>-9.2</b>	<b>1.1</b>	<b>-1.7</b>	<b>-11.4</b>
Electricity, gas, steam and air conditioning supply	D35	0.3	-8.0	-9.2	1.1	-1.7	-11.4

<sup>1</sup> Working day adjusted.



Table 3

**Industrial Production Indices**  
(Seasonally adjusted, 2010=100)

NACE.BG - 2008 Code	2012		2013										
	XI	XII	I	II	III	IV	V	VI	VII	VIII	IX	X	XI
<b>B_TO_E36</b>	<b>106.7</b>	<b>109.7</b>	<b>110.6</b>	<b>105.5</b>	<b>103.7</b>	<b>103.9</b>	<b>101.7</b>	<b>102.5</b>	<b>104.4</b>	<b>104.9</b>	<b>105.5</b>	<b>107.0</b>	<b>107.2</b>
<b>B</b>	<b>82.3</b>	<b>109.9</b>	<b>102.0</b>	<b>96.4</b>	<b>86.1</b>	<b>86.5</b>	<b>87.6</b>	<b>93.0</b>	<b>94.2</b>	<b>102.8</b>	<b>99.2</b>	<b>106.8</b>	<b>104.9</b>
<b>B05</b>	83.5	116.1	103.6	91.0	61.2	80.4	61.6	89.3	79.2	104.6	99.9	121.1	106.5
<b>B07</b>	78.3	112.7	91.1	94.6	98.7	88.2	97.9	93.9	101.3	97.6	98.8	108.0	111.9
<b>B08</b>	124.0	103.3	97.3	101.3	106.4	112.7	116.8	109.5	108.0	116.9	107.8	106.7	101.3
<b>C</b>	<b>105.8</b>	<b>105.6</b>	<b>109.2</b>	<b>107.4</b>	<b>104.5</b>	<b>106.6</b>	<b>102.6</b>	<b>103.4</b>	<b>106.2</b>	<b>105.8</b>	<b>106.8</b>	<b>109.2</b>	<b>109.6</b>
<b>C10</b>	91.9	91.3	92.9	87.1	86.7	91.2	87.4	94.5	94.0	85.6	90.2	92.5	95.5
<b>C11</b>	97.6	89.6	108.5	97.8	96.6	99.8	106.3	104.9	96.6	101.3	103.8	97.8	100.7
<b>C12</b>	78.2	115.4	119.7	127.5	146.6	150.5	130.0	118.8	122.2	134.5	120.0	91.3	93.1
<b>C13</b>	95.2	102.8	107.4	95.7	99.2	101.3	98.8	97.6	95.9	103.3	104.9	104.9	100.1
<b>C14</b>	96.7	96.0	100.4	99.7	97.0	103.7	96.0	95.8	98.1	101.3	97.9	97.9	105.3
<b>C15</b>	81.8	73.7	80.2	76.0	76.8	83.4	74.1	72.0	74.4	75.1	77.2	78.2	76.7
<b>C16</b>	101.2	91.0	104.2	99.9	102.5	107.3	98.5	97.0	97.0	94.3	95.7	95.4	105.7
<b>C17</b>	106.8	110.2	110.0	117.6	120.0	119.9	116.4	111.6	117.2	117.4	118.1	128.9	131.1
<b>C18</b>	100.7	93.6	94.8	95.8	99.9	115.6	110.0	98.8	104.0	97.5	100.7	96.7	94.0
<b>C20</b>	97.4	95.2	104.2	97.0	95.4	99.2	103.9	96.3	98.8	93.9	86.0	97.4	101.4
<b>C21</b>	121.2	122.4	139.9	136.1	135.1	140.6	139.4	125.7	133.5	133.3	137.1	133.3	137.5
<b>C22</b>	110.1	95.4	115.8	117.2	105.7	115.8	110.2	107.8	112.2	108.8	115.5	113.4	113.1
<b>C23</b>	118.9	105.6	117.4	108.8	108.7	114.7	111.3	105.8	108.1	116.8	112.0	111.9	115.1
<b>C24</b>	95.9	90.4	148.5	91.0	91.4	93.2	94.1	92.7	97.8	100.5	103.5	105.4	105.4
<b>C25</b>	103.0	102.4	111.7	97.1	103.8	99.7	97.1	105.1	110.9	105.7	102.7	131.9	114.3
<b>C26</b>	130.2	105.1	124.1	143.5	115.9	132.9	121.9	106.7	130.0	119.4	116.1	140.9	132.1
<b>C27</b>	129.4	141.0	130.9	125.4	121.8	121.9	127.0	137.6	131.8	141.8	131.2	132.5	137.8
<b>C28</b>	122.9	125.1	132.8	130.6	136.6	138.1	129.6	124.8	130.8	129.9	135.6	137.3	139.1
<b>C29</b>	94.6	81.6	96.6	103.4	98.2	101.2	92.6	105.1	108.5	99.3	108.4	107.5	113.0
<b>C30</b>	77.9	95.3	122.1	100.0	71.6	85.4	64.2	71.6	70.9	68.0	67.3	88.1	83.1
<b>C31</b>	116.5	116.9	126.8	126.5	117.2	123.0	113.0	116.4	114.9	120.1	120.7	125.1	125.1
<b>C32</b>	121.6	120.5	141.9	148.6	156.7	146.3	137.2	151.9	154.0	151.0	140.3	157.9	165.5
<b>C33</b>	104.9	96.4	85.6	86.0	79.7	83.5	73.8	69.4	72.4	72.4	77.4	83.0	72.8
<b>D</b>	<b>116.0</b>	<b>124.2</b>	<b>122.9</b>	<b>102.1</b>	<b>106.0</b>	<b>98.8</b>	<b>102.6</b>	<b>104.5</b>	<b>105.5</b>	<b>104.4</b>	<b>105.2</b>	<b>102.3</b>	<b>101.5</b>
<b>D35</b>	116.0	124.2	122.9	102.1	106.0	98.8	102.6	104.5	105.5	104.4	105.2	102.3	101.5

**Industrial Production Indices**  
(Working day adjusted, 2010=100)

NACE.BG - 2008 Code	2010	2011	2012		2013										
	XI	XI	XI	XII	I	II	III	IV	V	VI	VII	VIII	IX	X	XI
<b>B_TO_E36</b>	<b>108.6</b>	<b>110.8</b>	<b>110.7</b>	<b>113.7</b>	<b>103.6</b>	<b>96.3</b>	<b>103.5</b>	<b>100.7</b>	<b>98.2</b>	<b>104.5</b>	<b>107.9</b>	<b>103.2</b>	<b>105.4</b>	<b>111.5</b>	<b>113.8</b>
<b>B</b>	<b>115.8</b>	<b>107.7</b>	<b>89.4</b>	<b>117.9</b>	<b>95.3</b>	<b>89.9</b>	<b>83.5</b>	<b>80.9</b>	<b>83.1</b>	<b>89.3</b>	<b>94.3</b>	<b>101.6</b>	<b>102.7</b>	<b>121.8</b>	<b>114.8</b>
<b>B05</b>	127.1	153.0	96.9	128.9	110.4	87.8	49.9	58.0	43.1	73.3	74.5	103.2	105.7	147.9	121.5
<b>B07</b>	106.6	62.2	78.3	112.7	91.1	94.6	98.7	88.2	97.9	93.9	101.3	97.6	98.8	108.0	111.9
<b>B08</b>	111.1	99.4	140.1	109.9	62.7	72.6	95.9	109.7	123.9	119.7	119.6	128.5	119.1	123.7	113.1
<b>C</b>	<b>110.4</b>	<b>109.5</b>	<b>110.3</b>	<b>101.7</b>	<b>93.5</b>	<b>92.6</b>	<b>103.5</b>	<b>108.1</b>	<b>105.2</b>	<b>111.7</b>	<b>114.2</b>	<b>106.1</b>	<b>109.4</b>	<b>115.4</b>	<b>115.5</b>
<b>C10</b>	110.0	99.2	97.9	95.6	77.7	75.1	85.4	87.8	85.8	97.1	95.5	88.5	97.7	101.8	102.0
<b>C11</b>	98.5	85.2	89.6	93.0	69.4	63.2	89.4	97.0	119.9	131.8	119.8	125.6	115.8	88.5	92.3
<b>C12</b>	114.7	143.5	86.2	111.4	89.5	95.2	142.2	141.6	136.6	139.8	137.5	137.1	126.7	93.0	90.7
<b>C13</b>	104.1	99.7	100.4	90.8	91.7	91.8	110.5	111.8	110.7	111.0	100.2	83.0	100.0	106.2	105.8
<b>C14</b>	105.2	92.2	96.2	97.5	101.7	99.1	93.8	99.2	87.3	102.9	111.9	103.0	94.2	91.8	107.7
<b>C15</b>	96.3	88.2	79.7	65.9	79.4	71.8	75.3	71.7	65.4	75.5	89.6	77.8	85.4	81.8	77.0
<b>C16</b>	111.4	106.4	111.5	86.6	80.1	78.9	96.8	104.8	98.9	106.4	108.7	97.3	105.6	108.0	116.8
<b>C17</b>	109.6	84.2	102.5	105.3	100.3	110.6	126.9	125.9	121.2	123.5	129.4	118.7	117.6	116.0	119.7
<b>C18</b>	106.4	104.8	112.7	107.6	79.4	84.7	95.0	111.9	106.9	103.2	104.1	100.1	105.9	104.9	100.9
<b>C20</b>	129.7	107.4	100.6	94.2	97.2	91.2	105.2	102.6	104.3	99.8	99.3	88.3	85.8	94.7	105.0
<b>C21</b>	102.9	133.2	126.4	120.1	112.9	137.4	139.2	140.1	139.3	137.4	125.2	127.8	139.6	142.6	142.7
<b>C22</b>	114.0	98.8	118.7	86.7	93.8	98.4	104.2	113.6	110.1	116.4	123.4	111.9	123.7	127.0	121.7
<b>C23</b>	116.3	112.3	129.3	88.6	83.1	86.9	104.7	120.2	120.7	116.8	116.6	123.7	122.2	126.4	126.5
<b>C24</b>	97.8	119.6	109.8	68.3	139.2	88.8	89.0	104.4	101.5	87.2	116.8	94.9	93.8	118.1	116.6
<b>C25</b>	117.7	123.4	108.8	120.7	81.5	85.5	106.9	99.3	96.3	113.3	115.7	106.7	105.6	134.0	122.1
<b>C26</b>	109.9	131.9	136.9	129.9	106.2	127.1	118.0	130.7	122.0	111.8	129.3	106.8	120.8	141.9	138.7
<b>C27</b>	108.6	125.0	140.5	136.3	114.0	111.1	118.3	121.0	123.1	152.9	139.7	130.5	136.6	145.4	153.1
<b>C28</b>	111.1	123.7	126.9	119.2	112.7	123.8	147.1	138.4	130.8	136.9	139.7	119.6	136.6	141.9	143.8
<b>C29</b>	103.6	98.3	105.4	75.6	89.8	96.8	101.7	104.8	93.9	112.8	110.7	86.6	112.5	116.2	124.2
<b>C30</b>	65.6	102.6	67.5	102.1	77.6	82.0	71.8	79.3	79.2	85.8	72.2	62.2	63.5	84.3	77.4
<b>C31</b>	119.2	121.7	125.9	123.8	105.3	110.0	116.0	118.2	111.0	122.9	117.7	121.1	123.6	136.8	135.2
<b>C32</b>	131.4	103.9	128.7	109.5	115.1	128.2	154.6	141.3	140.3	172.6	153.6	154.4	150.5	183.6	175.6
<b>C33</b>	97.6	107.6	116.9	133.0	58.5	72.2	78.1	76.2	68.3	70.0	70.9	72.5	80.2	89.5	82.1
<b>D</b>	<b>102.6</b>	<b>117.5</b>	<b>124.6</b>	<b>149.7</b>	<b>141.9</b>	<b>112.3</b>	<b>115.5</b>	<b>89.2</b>	<b>84.4</b>	<b>89.6</b>	<b>96.0</b>	<b>94.4</b>	<b>93.2</b>	<b>96.7</b>	<b>110.4</b>
<b>D35</b>	102.6	117.5	124.6	149.7	141.9	112.3	115.5	89.2	84.4	89.6	96.0	94.4	93.2	96.7	110.4