

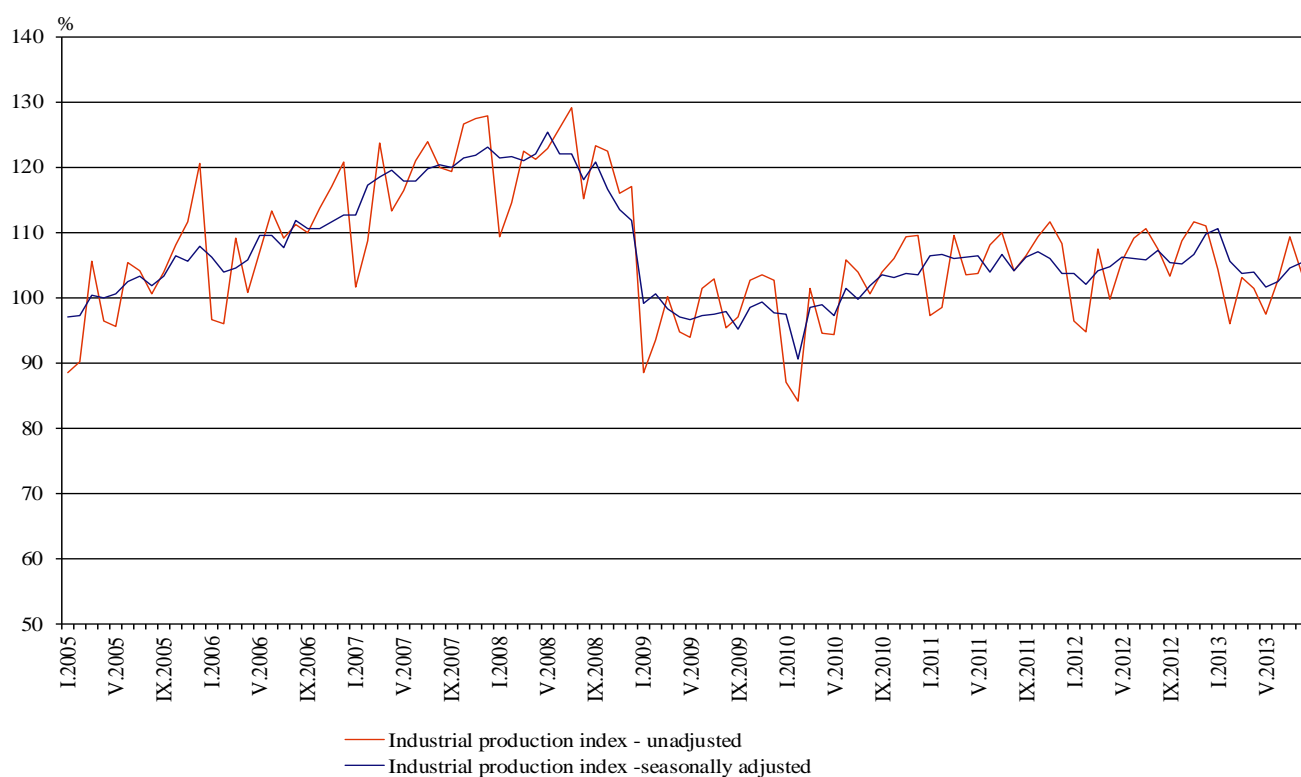


INDUSTRIAL PRODUCTION INDICES IN AUGUST 2013¹

The preliminary data showed that the Industrial Production Index², seasonally adjusted³, has increased by 0.9% in August 2013 as compared to July 2013.

In August 2013 working day adjusted⁴ Industrial Production Index has fallen by 2.4% in comparison with the same month of 2012.

Figure 1. Industrial Production Indices (2010=100)



¹ August 2013 data are preliminary.

² Monthly Industrial Production and Industrial turnover indices measure changes in production and turnover values of industrial enterprises. This information can be used to assess the current economic development and for short-term forecasts. Indices do not measure the actual production level, it aims to measure the average change in value of production between two points of time. Indices are compiled on the basis of information collected through representative sampling survey on industrial enterprises. The sample covers enterprises with annual turnover more than 97% of total turnover in industry.

Industrial production indices are calculated at constant base year that is to say they are weighted with the structure of the value added at factor costs in the base year.

³ Seasonal adjustment is a statistical method, which eliminates the seasonal component of time series.

⁴ Working day adjustment is an adjustment for variations caused by calendar effects, different number of calendar and working days in the months, national holidays and outliers (for example the presence of more non-working days in May could contribute to the decline in the production in some activities).

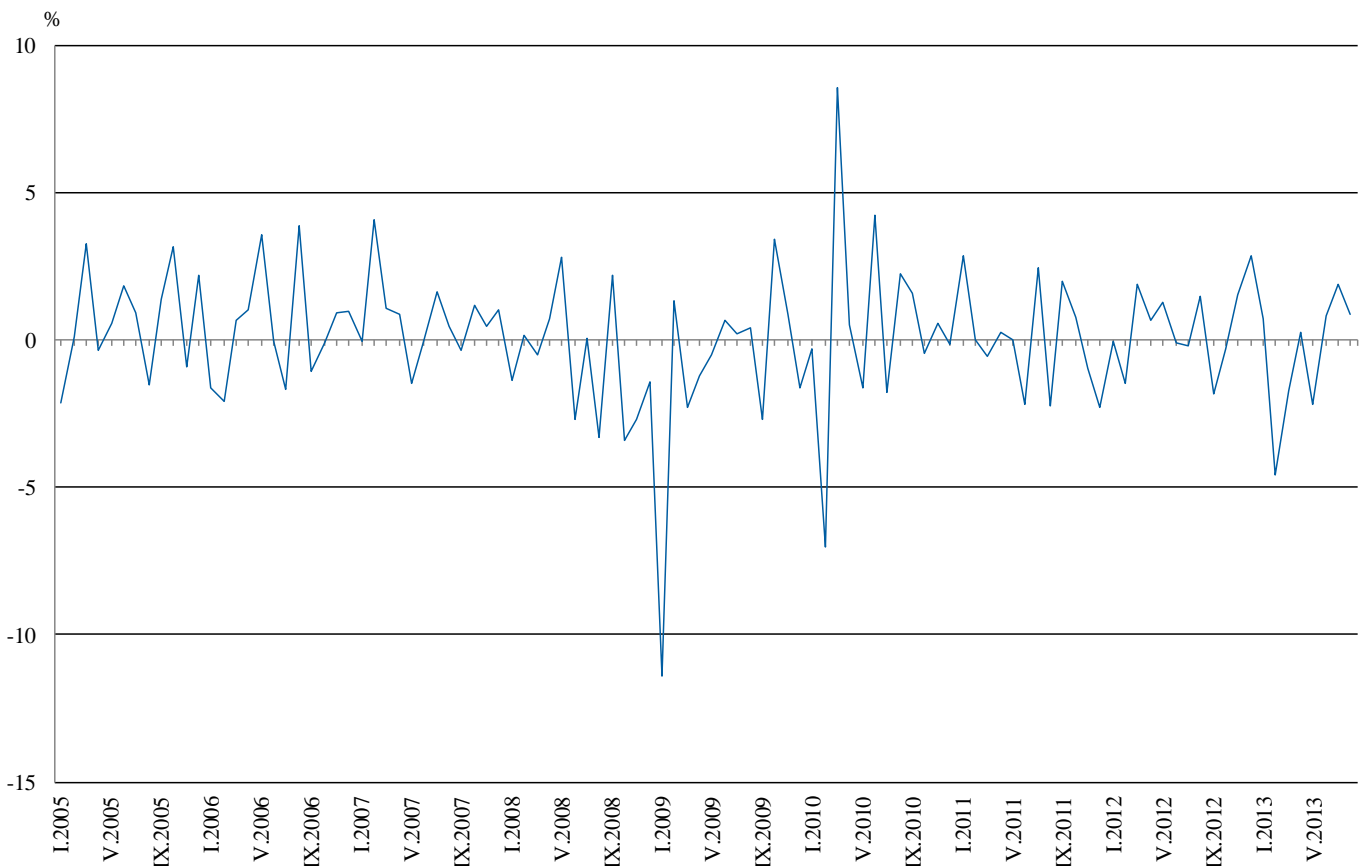


Monthly comparisons

In August 2013 as compared to July 2013, the seasonally adjusted Industrial Production Index increased in the mining and quarrying industry by 8.3% and in the electricity, gas, steam and air conditioning supply by 1.9%, while in the manufacturing a decrease by 0.4% was seen.

The most significant decreases of production in the manufacturing were registered in the manufacture of motor vehicles, trailers and semi-trailers by 11.0%, in the manufacture of basic pharmaceutical products and pharmaceutical preparations by 10.8%, in the manufacture of computer, electronic and optical products by 7.5%, in the manufacture of food products and in the printing and reproduction of recorded media by 6.3%. There was increase in the manufacture of tobacco products by 13.0%, in the manufacture of electrical equipment by 8.4%, in the manufacture of other non-metallic mineral products by 7.8%, in the manufacture of textiles by 7.3%.

Figure 2. Change of Industrial Production Indices compared to the previous month (Seasonally adjusted)



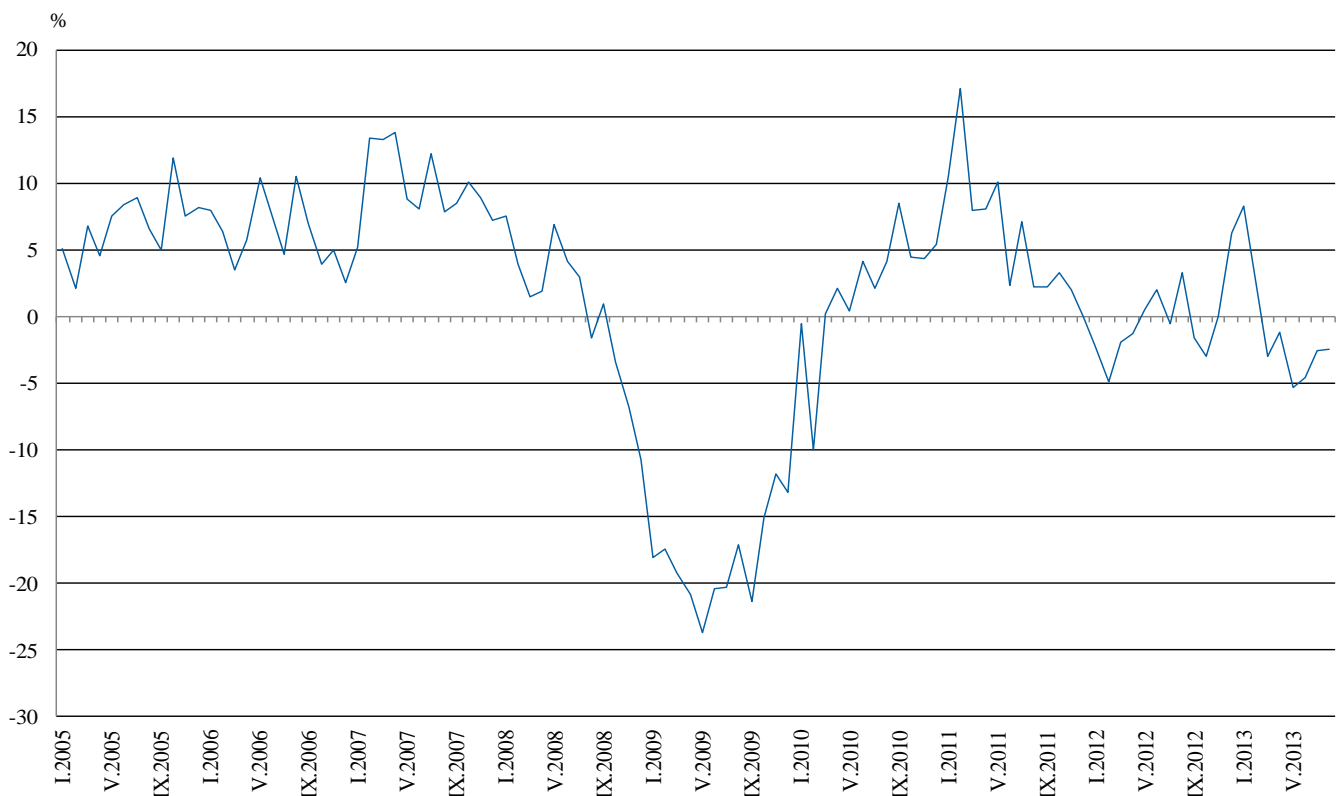


Annual comparisons

On annual basis in August 2013 Industrial Production Index, calculated from working day adjusted data decreased in the mining and quarrying industry by 8.0%, in the electricity, gas, steam and air conditioning supply by 6.1% and in the manufacturing by 0.7%.

In the manufacturing, the more significant decreases compared to the same month of the previous year were seen in the repair and installation of machinery and equipment by 25.3%, in the manufacture of leather and related products by 19.5%, in the manufacture of basic pharmaceutical products and pharmaceutical preparations by 10.8%, in the manufacture of other transport equipment by 10.0%, in the manufacture of food products by 7.8%. Increases were registered in the manufacture of textiles by 22.2%, in the printing and reproduction of recorded media by 17.9%, in the manufacture of basic metals and in the manufacture of electrical equipment by 17.7%.

Figure 3. Change of Industrial Production Indices compared to the same month of the previous year (Working day adjusted)



The final data on Industrial Production and Turnover Indices for July 2013 can be found in NSI internet web-site: (<http://www.nsi.bg/otrasalen.php?otr=46>).

Change of Industrial Production Indices compared to the previous month¹

(Per cent)

| Economic Activities | NACE.BG - 2008 Code | 2013 | | | | | |
|---|------------------------|--------------|-------------|-------------|------------|------------|-------------|
| | | III | IV | V | VI | VII | VIII |
| Industry | B_TO_E36 | -1.7 | 0.3 | -2.2 | 0.8 | 1.9 | 0.9 |
| Mining and quarrying | B | -10.7 | 0.5 | 1.3 | 6.1 | 1.3 | 8.3 |
| of which: | | | | | | | |
| Mining of coal and lignite | B05 | -32.8 | 31.5 | -23.4 | 44.9 | -11.3 | 31.9 |
| Mining of metal ores | B07 | 4.3 | -10.7 | 11.0 | -4.1 | 7.9 | -4.7 |
| Other mining and quarrying | B08 | 5.0 | 5.9 | 3.7 | -6.3 | -1.4 | 9.0 |
| Manufacturing | C | -2.6 | 2.0 | -3.8 | 0.8 | 2.7 | -0.4 |
| of which: | | | | | | | |
| Manufacture of food products | C10 | -0.5 | 5.2 | -4.2 | 8.1 | -0.5 | -6.3 |
| Manufacture of beverages | C11 | -1.2 | 3.4 | 6.5 | -1.3 | -7.8 | 3.8 |
| Manufacture of tobacco products | C12 | 15.0 | 2.7 | -13.6 | -8.6 | 2.8 | 13.0 |
| Manufacture of textiles | C13 | 3.7 | 2.1 | -2.4 | -1.2 | -1.7 | 7.3 |
| Manufacture of wearing apparel | C14 | -2.7 | 6.9 | -7.5 | -0.2 | 2.4 | 3.9 |
| Manufacture of leather and related products | C15 | 1.0 | 8.6 | -11.2 | -2.8 | 3.4 | -0.1 |
| Manufacture of wood and of products of wood and cork, except furniture; manufacture of articles of straw and plaiting materials | C16 | 2.6 | 4.7 | -8.2 | -1.5 | 0.0 | -2.4 |
| Manufacture of paper and paper products | C17 | 2.1 | 0.0 | -2.9 | -4.1 | 5.0 | 0.3 |
| Printing and reproduction of recorded media | C18 | 4.3 | 15.6 | -4.8 | -10.1 | 5.2 | -6.3 |
| Manufacture of chemicals and chemical products | C20 | -1.7 | 4.0 | 4.7 | -7.3 | 2.6 | -4.5 |
| Manufacture of basic pharmaceutical products and pharmaceutical preparations | C21 | -0.8 | 4.1 | -0.9 | -9.8 | 6.2 | -10.8 |
| Manufacture of rubber and plastic products | C22 | -9.9 | 9.6 | -4.8 | -2.2 | 4.1 | -3.0 |
| Manufacture of other non-metallic mineral products | C23 | -0.1 | 5.5 | -3.0 | -4.9 | 2.2 | 7.8 |
| Manufacture of basic metals | C24 | 0.5 | 2.0 | 0.9 | -1.5 | 5.5 | 1.1 |
| Manufacture of fabricated metal products, except machinery and equipment | C25 | 6.9 | -3.9 | -2.5 | 8.2 | 5.6 | -5.6 |
| Manufacture of computer, electronic and optical products | C26 | -19.3 | 14.7 | -8.3 | -12.5 | 21.9 | -7.5 |
| Manufacture of electrical equipment | C27 | -2.9 | 0.1 | 4.2 | 8.3 | -4.2 | 8.4 |
| Manufacture of machinery and equipment n.e.c. | C28 | 4.6 | 1.1 | -6.2 | -3.7 | 4.8 | -0.7 |
| Manufacture of motor vehicles, trailers and semi-trailers | C29 | -5.0 | 3.1 | -8.5 | 13.5 | 3.2 | -11.0 |
| Manufacture of other transport equipment | C30 | -28.4 | 19.2 | -24.8 | 11.6 | -0.9 | -3.5 |
| Manufacture of furniture | C31 | -7.4 | 4.9 | -8.1 | 3.0 | -1.3 | 6.3 |
| Other manufacturing | C32 | 5.5 | -6.7 | -6.2 | 10.6 | 1.4 | -1.5 |
| Repair and installation of machinery and equipment | C32 | -7.3 | 4.8 | -11.6 | -6.1 | 4.3 | 0.2 |
| Electricity, gas, steam and air conditioning supply | D | 3.7 | -6.8 | 3.9 | 1.8 | 1.0 | 1.9 |
| Electricity, gas, steam and air conditioning supply | D35 | 3.7 | -6.8 | 3.9 | 1.8 | 1.0 | 1.9 |

¹ Seasonally adjusted



Table 2

**Change of Industrial Production Indices compared to
the same month of the previous year¹**

(Per cent)

| Economic Activities | NACE.BG -2008 Code | 2013 | | | | | |
|---|-----------------------|--------------|--------------|--------------|--------------|--------------|-------------|
| | | III | IV | V | VI | VII | VIII |
| Industry | B_TO_E36 | -3.0 | -1.2 | -5.3 | -4.6 | -2.6 | -2.4 |
| Mining and quarrying | B | -21.4 | -13.1 | -15.0 | -11.6 | -16.3 | -8.0 |
| of which: | | | | | | | |
| Mining of coal and lignite | B05 | -57.0 | -29.3 | -58.9 | -0.5 | -32.8 | -4.5 |
| Mining of metal ores | B07 | 1.8 | -9.2 | 18.3 | -16.5 | 5.1 | -3.2 |
| Other mining and quarrying | B08 | 8.1 | 8.5 | 19.2 | -8.9 | -23.3 | -2.2 |
| Manufacturing | C | -2.7 | 1.7 | -4.5 | -4.7 | 1.3 | -0.7 |
| of which: | | | | | | | |
| Manufacture of food products | C10 | -12.2 | -4.3 | -7.3 | 1.3 | -0.7 | -7.8 |
| Manufacture of beverages | C11 | -6.2 | -1.0 | 9.7 | 5.7 | -5.6 | 2.9 |
| Manufacture of tobacco products | C12 | 16.3 | 33.4 | -5.8 | -19.2 | -14.2 | 14.4 |
| Manufacture of textiles | C13 | 13.1 | 12.6 | 18.6 | 18.3 | 20.0 | 22.2 |
| Manufacture of wearing apparel | C14 | -1.4 | 12.7 | 4.3 | -5.0 | 4.6 | 8.5 |
| Manufacture of leather and related products | C15 | -12.7 | 7.9 | -18.9 | -30.1 | -16.7 | -19.5 |
| Manufacture of wood and of products of wood and cork, except furniture; manufacture of articles of straw and plaiting materials | C16 | 7.5 | 8.5 | -10.5 | -7.1 | -7.0 | -5.2 |
| Manufacture of paper and paper products | C17 | 13.3 | 8.8 | 7.5 | 7.0 | 7.6 | 11.5 |
| Printing and reproduction of recorded media | C18 | 4.3 | 28.7 | 22.7 | 9.7 | 20.1 | 17.9 |
| Manufacture of chemicals and chemical products | C20 | -16.2 | 7.8 | -6.7 | -10.8 | 1.6 | -7.2 |
| Manufacture of basic pharmaceutical products and pharmaceutical preparations | C21 | 14.7 | 14.2 | 13.9 | -6.0 | -5.8 | -10.8 |
| Manufacture of rubber and plastic products | C22 | 6.5 | 12.0 | 4.1 | -1.3 | 10.2 | 0.0 |
| Manufacture of other non-metallic mineral products | C23 | 1.7 | 4.7 | 7.1 | 0.0 | -0.3 | 9.4 |
| Manufacture of basic metals | C24 | 3.4 | -15.2 | 0.8 | -12.4 | 3.2 | 17.7 |
| Manufacture of fabricated metal products, except machinery and equipment | C25 | 1.1 | 1.8 | -14.3 | 8.0 | 18.9 | 7.3 |
| Manufacture of computer, electronic and optical products | C26 | -8.1 | 0.3 | -8.4 | -25.4 | 18.8 | 6.3 |
| Manufacture of electrical equipment | C27 | -0.3 | -5.9 | -2.5 | 6.7 | 2.4 | 17.7 |
| Manufacture of machinery and equipment n.e.c. | C28 | 6.5 | 10.2 | 0.2 | -4.8 | 5.6 | -1.7 |
| Manufacture of motor vehicles, trailers and semi-trailers | C29 | 22.6 | 23.6 | 11.1 | 25.5 | 28.9 | 12.7 |
| Manufacture of other transport equipment | C30 | -45.9 | -26.5 | -35.1 | -50.5 | -22.7 | -10.0 |
| Manufacture of furniture | C31 | 11.9 | 18.7 | -2.7 | 1.6 | 0.1 | 5.6 |
| Other manufacturing | C32 | 31.3 | 15.0 | 4.7 | 23.2 | 26.3 | 9.7 |
| Repair and installation of machinery and equipment | C33 | -10.0 | -4.2 | -25.7 | -25.4 | -9.9 | -25.3 |
| Electricity, gas, steam and air conditioning supply | D | 4.7 | -2.6 | -2.7 | 0.3 | -8.0 | -6.1 |
| Electricity, gas, steam and air conditioning supply | D35 | 4.7 | -2.6 | -2.7 | 0.3 | -8.0 | -6.1 |

¹ Working day adjusted



Table 3

Industrial Production Indices
(Seasonally adjusted, 2010=100)

| NACE.BG - 2008 Code | 2012 | | | | | 2013 | | | | | | | |
|------------------------|--------------|--------------|--------------|--------------|--------------|--------------|--------------|--------------|--------------|--------------|--------------|--------------|--------------|
| | VIII | IX | X | XI | XII | I | II | III | IV | V | VI | VII | VIII |
| B_TO_E36 | 107.3 | 105.3 | 105.0 | 106.7 | 109.7 | 110.6 | 105.5 | 103.7 | 103.9 | 101.7 | 102.5 | 104.4 | 105.3 |
| B | 112.1 | 112.7 | 110.8 | 82.3 | 109.9 | 102.0 | 96.4 | 86.1 | 86.5 | 87.6 | 93.0 | 94.2 | 102.1 |
| B05 | 113.1 | 117.3 | 108.5 | 83.5 | 116.1 | 103.6 | 91.0 | 61.2 | 80.4 | 61.6 | 89.3 | 79.2 | 104.4 |
| B07 | 99.7 | 98.1 | 108.3 | 78.3 | 112.7 | 91.1 | 94.6 | 98.7 | 88.2 | 97.9 | 93.9 | 101.3 | 96.5 |
| B08 | 121.8 | 126.1 | 123.6 | 124.0 | 103.3 | 97.3 | 101.3 | 106.4 | 112.7 | 116.8 | 109.5 | 108.0 | 117.7 |
| C | 106.3 | 103.9 | 104.5 | 105.8 | 105.6 | 109.2 | 107.4 | 104.5 | 106.6 | 102.6 | 103.4 | 106.2 | 105.8 |
| C10 | 95.3 | 90.9 | 92.5 | 91.9 | 91.3 | 92.9 | 87.1 | 86.7 | 91.2 | 87.4 | 94.5 | 94.0 | 88.0 |
| C11 | 97.2 | 100.0 | 102.5 | 97.6 | 89.6 | 108.5 | 97.8 | 96.6 | 99.8 | 106.3 | 104.9 | 96.6 | 100.3 |
| C12 | 120.6 | 133.8 | 83.3 | 78.2 | 115.4 | 119.7 | 127.5 | 146.6 | 150.5 | 130.0 | 118.8 | 122.2 | 138.1 |
| C13 | 85.1 | 87.3 | 90.0 | 95.2 | 102.8 | 107.4 | 95.7 | 99.2 | 101.3 | 98.8 | 97.6 | 95.9 | 103.0 |
| C14 | 95.4 | 91.0 | 89.8 | 96.7 | 96.0 | 100.4 | 99.7 | 97.0 | 103.7 | 96.0 | 95.8 | 98.1 | 101.9 |
| C15 | 93.2 | 82.0 | 74.5 | 81.8 | 73.7 | 80.2 | 76.0 | 76.8 | 83.4 | 74.1 | 72.0 | 74.4 | 74.4 |
| C16 | 99.1 | 95.2 | 100.5 | 101.2 | 91.0 | 104.2 | 99.9 | 102.5 | 107.3 | 98.5 | 97.0 | 97.0 | 94.7 |
| C17 | 105.7 | 106.2 | 103.3 | 106.8 | 110.2 | 110.0 | 117.6 | 120.0 | 119.9 | 116.4 | 111.6 | 117.2 | 117.5 |
| C18 | 84.2 | 85.3 | 84.9 | 100.7 | 93.6 | 94.8 | 95.8 | 99.9 | 115.6 | 110.0 | 98.8 | 104.0 | 97.4 |
| C20 | 101.2 | 102.5 | 98.6 | 97.4 | 95.2 | 104.2 | 97.0 | 95.4 | 99.2 | 103.9 | 96.3 | 98.8 | 94.3 |
| C21 | 124.6 | 132.7 | 125.0 | 121.2 | 122.4 | 139.9 | 136.1 | 135.1 | 140.6 | 139.4 | 125.7 | 133.5 | 119.1 |
| C22 | 107.7 | 105.5 | 105.0 | 110.1 | 95.4 | 115.8 | 117.2 | 105.7 | 115.8 | 110.2 | 107.8 | 112.2 | 108.8 |
| C23 | 107.9 | 104.0 | 111.2 | 118.9 | 105.6 | 117.4 | 108.8 | 108.7 | 114.7 | 111.3 | 105.8 | 108.1 | 116.6 |
| C24 | 91.7 | 95.0 | 92.6 | 95.9 | 90.4 | 148.5 | 91.0 | 91.4 | 93.2 | 94.1 | 92.7 | 97.8 | 98.9 |
| C25 | 99.2 | 93.3 | 104.2 | 103.0 | 102.4 | 111.7 | 97.1 | 103.8 | 99.7 | 97.1 | 105.1 | 110.9 | 104.7 |
| C26 | 111.7 | 118.3 | 104.2 | 130.2 | 105.1 | 124.1 | 143.5 | 115.9 | 132.9 | 121.9 | 106.7 | 130.0 | 120.2 |
| C27 | 125.2 | 127.1 | 129.7 | 129.4 | 141.0 | 130.9 | 125.4 | 121.8 | 121.9 | 127.0 | 137.6 | 131.8 | 142.9 |
| C28 | 131.1 | 120.1 | 119.6 | 122.9 | 125.1 | 132.8 | 130.6 | 136.6 | 138.1 | 129.6 | 124.8 | 130.8 | 129.9 |
| C29 | 85.5 | 94.7 | 92.8 | 94.6 | 81.6 | 96.6 | 103.4 | 98.2 | 101.2 | 92.6 | 105.1 | 108.5 | 96.5 |
| C30 | 74.5 | 80.0 | 114.2 | 77.9 | 95.3 | 122.1 | 100.0 | 71.6 | 85.4 | 64.2 | 71.6 | 70.9 | 68.5 |
| C31 | 115.7 | 118.7 | 115.5 | 116.5 | 116.9 | 126.8 | 126.5 | 117.2 | 123.0 | 113.0 | 116.4 | 114.9 | 122.1 |
| C32 | 138.4 | 138.0 | 137.1 | 121.6 | 120.5 | 141.9 | 148.6 | 156.7 | 146.3 | 137.2 | 151.9 | 154.0 | 151.8 |
| C33 | 97.3 | 71.0 | 94.2 | 104.9 | 96.4 | 85.6 | 86.0 | 79.7 | 83.5 | 73.8 | 69.4 | 72.4 | 72.5 |
| D | 113.3 | 105.1 | 104.3 | 116.0 | 124.2 | 122.9 | 102.1 | 106.0 | 98.8 | 102.6 | 104.5 | 105.5 | 107.4 |
| D35 | 113.3 | 105.1 | 104.3 | 116.0 | 124.2 | 122.9 | 102.1 | 106.0 | 98.8 | 102.6 | 104.5 | 105.5 | 107.4 |



Table 4

Industrial Production Indices
(Working day adjusted, 2010=100)

| NACE.BG - 2008 Code | 2010 | 2011 | 2012 | | | | | 2013 | | | | | | | |
|------------------------|--------------|--------------|--------------|--------------|--------------|--------------|--------------|--------------|--------------|--------------|--------------|--------------|--------------|--------------|--------------|
| | VIII | VIII | VIII | IX | X | XI | XII | I | II | III | IV | V | VI | VII | VIII |
| B_TO_E36 | 100.7 | 103.0 | 106.4 | 104.6 | 107.6 | 110.7 | 113.7 | 103.6 | 96.3 | 103.5 | 100.7 | 98.2 | 104.5 | 107.9 | 103.8 |
| B | 96.9 | 104.1 | 109.7 | 116.5 | 124.3 | 89.4 | 117.9 | 95.3 | 89.9 | 83.5 | 80.9 | 83.1 | 89.3 | 94.3 | 101.0 |
| B05 | 96.4 | 116.3 | 108.1 | 123.6 | 130.7 | 96.9 | 128.9 | 110.4 | 87.8 | 49.9 | 58.0 | 43.1 | 73.3 | 74.5 | 103.2 |
| B07 | 97.3 | 86.2 | 99.7 | 98.1 | 108.3 | 78.3 | 112.7 | 91.1 | 94.6 | 98.7 | 88.2 | 97.9 | 93.9 | 101.3 | 96.5 |
| B08 | 97.7 | 104.3 | 131.7 | 139.6 | 143.2 | 140.1 | 109.9 | 62.7 | 72.6 | 95.9 | 109.7 | 123.9 | 119.7 | 119.6 | 128.8 |
| C | 102.6 | 104.2 | 106.6 | 106.8 | 109.3 | 110.3 | 101.7 | 93.5 | 92.6 | 103.5 | 108.1 | 105.2 | 111.7 | 114.2 | 105.9 |
| C10 | 104.5 | 96.4 | 98.9 | 98.5 | 101.8 | 97.9 | 95.6 | 77.7 | 75.1 | 85.4 | 87.8 | 85.8 | 97.1 | 95.5 | 91.2 |
| C11 | 131.1 | 121.9 | 121.8 | 109.6 | 94.3 | 89.6 | 93.0 | 69.4 | 63.2 | 89.4 | 97.0 | 119.9 | 131.8 | 119.8 | 125.4 |
| C12 | 119.8 | 120.4 | 122.9 | 139.7 | 98.5 | 86.2 | 111.4 | 89.5 | 95.2 | 142.2 | 141.6 | 136.6 | 139.8 | 137.5 | 140.7 |
| C13 | 76.8 | 94.7 | 68.0 | 82.3 | 89.1 | 100.4 | 90.8 | 91.7 | 91.8 | 110.5 | 111.8 | 110.7 | 111.0 | 100.2 | 83.1 |
| C14 | 96.7 | 101.4 | 95.3 | 88.0 | 87.3 | 96.2 | 97.5 | 101.7 | 99.1 | 93.8 | 99.2 | 87.3 | 102.9 | 111.9 | 103.4 |
| C15 | 98.6 | 97.2 | 96.6 | 89.9 | 74.4 | 79.7 | 65.9 | 79.4 | 71.8 | 75.3 | 71.7 | 65.4 | 75.5 | 89.6 | 77.7 |
| C16 | 107.3 | 109.5 | 103.2 | 105.5 | 114.4 | 111.5 | 86.6 | 80.1 | 78.9 | 96.8 | 104.8 | 98.9 | 106.4 | 108.7 | 97.8 |
| C17 | 119.5 | 113.8 | 106.5 | 109.1 | 98.2 | 102.5 | 105.3 | 100.3 | 110.6 | 126.9 | 125.9 | 121.2 | 123.5 | 129.4 | 118.7 |
| C18 | 99.6 | 91.0 | 84.8 | 89.1 | 93.4 | 112.7 | 107.6 | 79.4 | 84.7 | 95.0 | 111.9 | 106.9 | 103.2 | 104.1 | 100.1 |
| C20 | 101.9 | 109.2 | 95.4 | 103.3 | 95.9 | 100.6 | 94.2 | 97.2 | 91.2 | 105.2 | 102.6 | 104.3 | 99.8 | 99.3 | 88.5 |
| C21 | 97.2 | 111.6 | 121.2 | 134.9 | 136.3 | 126.4 | 120.1 | 112.9 | 137.4 | 139.2 | 140.1 | 139.3 | 137.4 | 125.2 | 108.1 |
| C22 | 103.0 | 107.6 | 112.2 | 113.0 | 117.8 | 118.7 | 86.7 | 93.8 | 98.4 | 104.2 | 113.6 | 110.1 | 116.4 | 123.4 | 112.2 |
| C23 | 108.3 | 112.3 | 112.6 | 113.7 | 126.1 | 129.3 | 88.6 | 83.1 | 86.9 | 104.7 | 120.2 | 120.7 | 116.8 | 116.6 | 123.2 |
| C24 | 96.2 | 103.3 | 80.6 | 89.4 | 97.5 | 109.8 | 68.3 | 139.2 | 88.8 | 89.0 | 104.4 | 101.5 | 87.2 | 116.8 | 94.9 |
| C25 | 101.1 | 103.2 | 98.4 | 95.2 | 104.8 | 108.8 | 120.7 | 81.5 | 85.5 | 106.9 | 99.3 | 96.3 | 113.3 | 115.7 | 105.6 |
| C26 | 93.9 | 107.8 | 101.0 | 125.4 | 104.9 | 136.9 | 129.9 | 106.2 | 127.1 | 118.0 | 130.7 | 122.0 | 111.8 | 129.3 | 107.3 |
| C27 | 87.7 | 97.2 | 110.5 | 131.2 | 140.9 | 140.5 | 136.3 | 114.0 | 111.1 | 118.3 | 121.0 | 123.1 | 152.9 | 139.7 | 130.1 |
| C28 | 98.7 | 101.4 | 122.2 | 120.9 | 123.7 | 126.9 | 119.2 | 112.7 | 123.8 | 147.1 | 138.4 | 130.8 | 136.9 | 139.7 | 120.1 |
| C29 | 80.2 | 85.0 | 74.8 | 95.8 | 99.1 | 105.4 | 75.6 | 89.8 | 96.8 | 101.7 | 104.8 | 93.9 | 112.8 | 110.7 | 84.3 |
| C30 | 179.3 | 60.9 | 69.1 | 77.5 | 99.9 | 67.5 | 102.1 | 77.6 | 82.0 | 71.8 | 79.3 | 79.2 | 85.8 | 72.2 | 62.2 |
| C31 | 99.5 | 118.8 | 116.9 | 122.4 | 126.3 | 125.9 | 123.8 | 105.3 | 110.0 | 116.0 | 118.2 | 111.0 | 122.9 | 117.7 | 123.4 |
| C32 | 90.3 | 120.5 | 141.4 | 149.3 | 160.3 | 128.7 | 109.5 | 115.1 | 128.2 | 154.6 | 141.3 | 140.3 | 172.6 | 153.6 | 155.1 |
| C33 | 116.5 | 81.4 | 97.2 | 73.6 | 98.6 | 116.9 | 133.0 | 58.5 | 72.2 | 78.1 | 76.2 | 68.3 | 70.0 | 70.9 | 72.6 |
| D | 94.4 | 97.8 | 103.9 | 92.1 | 98.3 | 124.6 | 149.7 | 141.9 | 112.3 | 115.5 | 89.2 | 84.4 | 89.6 | 96.0 | 97.6 |
| D35 | 94.4 | 97.8 | 103.9 | 92.1 | 98.3 | 124.6 | 149.7 | 141.9 | 112.3 | 115.5 | 89.2 | 84.4 | 89.6 | 96.0 | 97.6 |