

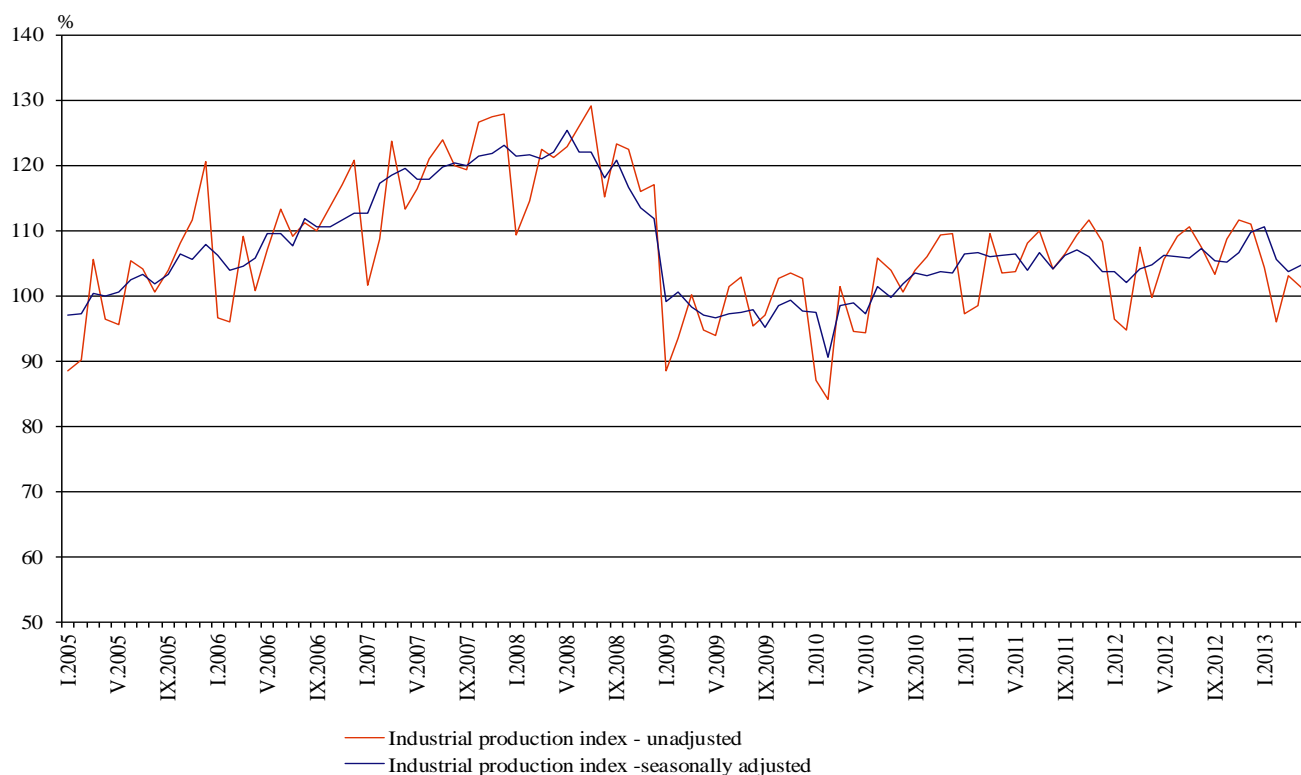


INDUSTRIAL PRODUCTION INDICES IN APRIL 2013¹

The preliminary data showed that the Industrial Production Index², seasonally adjusted³, increased by 1.1% in April 2013 as compared to March 2013.

In April 2013 working day adjusted⁴ Industrial Production Index fall by 1.3% in comparison with the same month of 2012.

Figure 1. Industrial Production Indices (2010=100)



¹ April 2013 data are preliminary.

² Monthly Industrial Production and Industrial turnover indices measure changes in production and turnover values of industrial enterprises. This information can be used to assess the current economic development and for short-term forecasts. Indices do not measure the actual production level, it aims to measure the average change in value of production between two points of time. Indices are compiled on the basis of information collected through representative sampling survey on industrial enterprises. The sample covers enterprises with annual turnover more than 97% of total turnover in industry.

Industrial production indices are calculated at constant base year that is to say they are weighted with the structure of the value added at factor costs in the base year.

³ Seasonal adjustment is a statistical method, which eliminates the seasonal component of time series and it is particularly suitable for long-term comparisons and analysis of the data.

⁴ Working day adjustment is an adjustment for variations caused by calendar effects, different number of calendar and working days in the months, national holidays and outliers (for example the presence of more non-working days in May could contribute to the decline in the production in some activities).

The seasonally and working day adjusted data on Industrial production index by months, starting from January 2000 can be found on the NSI web-site: (<http://www.nsi.bg/otrasalen.php?otr=46>).

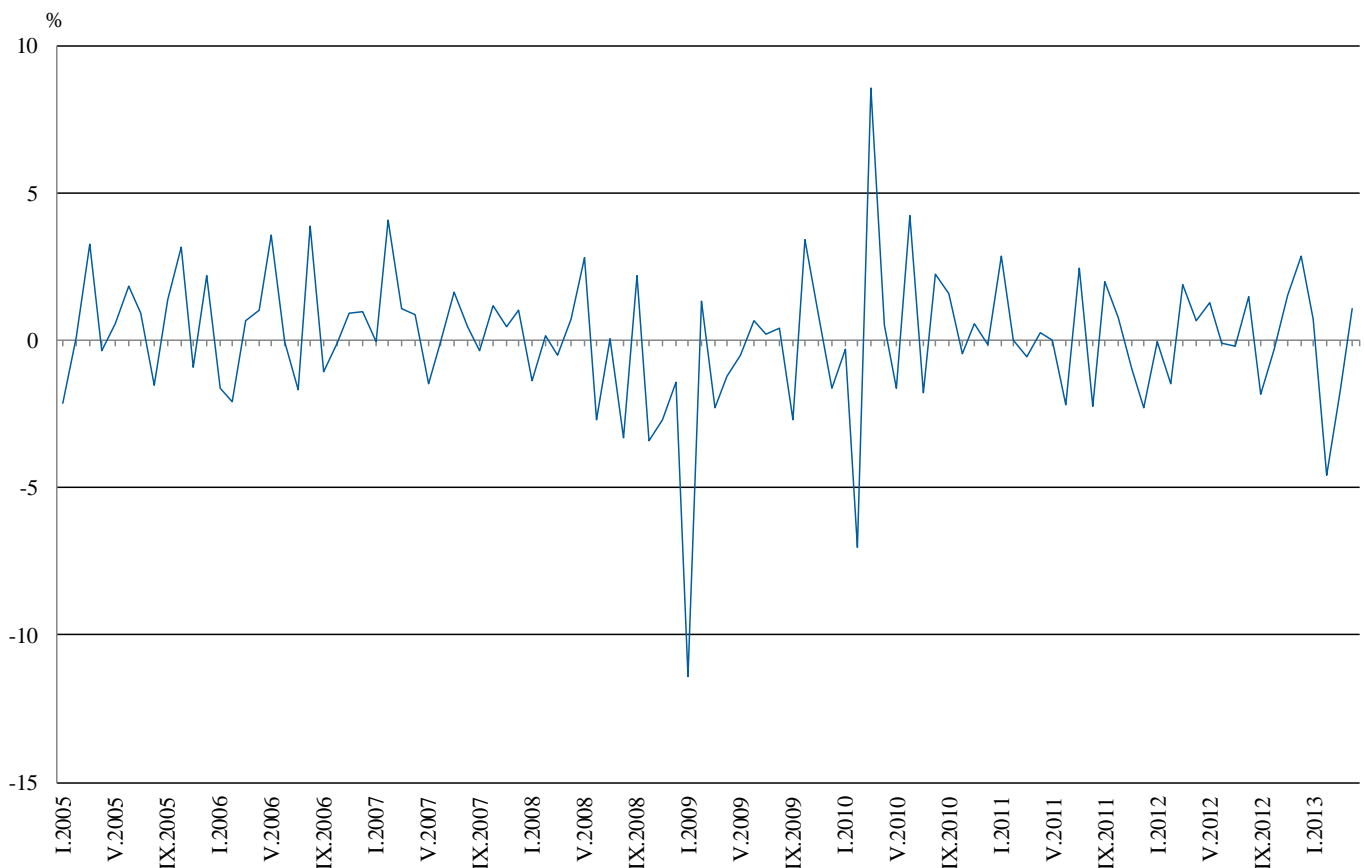


Monthly comparisons

In April 2013 as compared to March 2013, the seasonally adjusted Industrial Production Index increased in the manufacturing by 2.9% and in the mining and quarrying industry by 0.6%, while in the electricity, gas, steam and air conditioning supply a decrease by 6.8% was seen.

The most significant increases of production in the manufacturing were seen in the manufacture of other transport equipment by 18.9%, in the manufacture of computer, electronic and optical products by 15.1%, in the printing and reproduction of recorded media by 14.1%, in the manufacture of rubber and plastic products by 9.8%, in the manufacture of wearing apparel by 8.1%, in the manufacture of furniture by 5.6%. There was decrease in the manufacture of fabricated metal products, except machinery and equipment by 4.1%.

Figure 2. Percentage changes of Industrial Production Indices compared to the previous month (Seasonally adjusted)





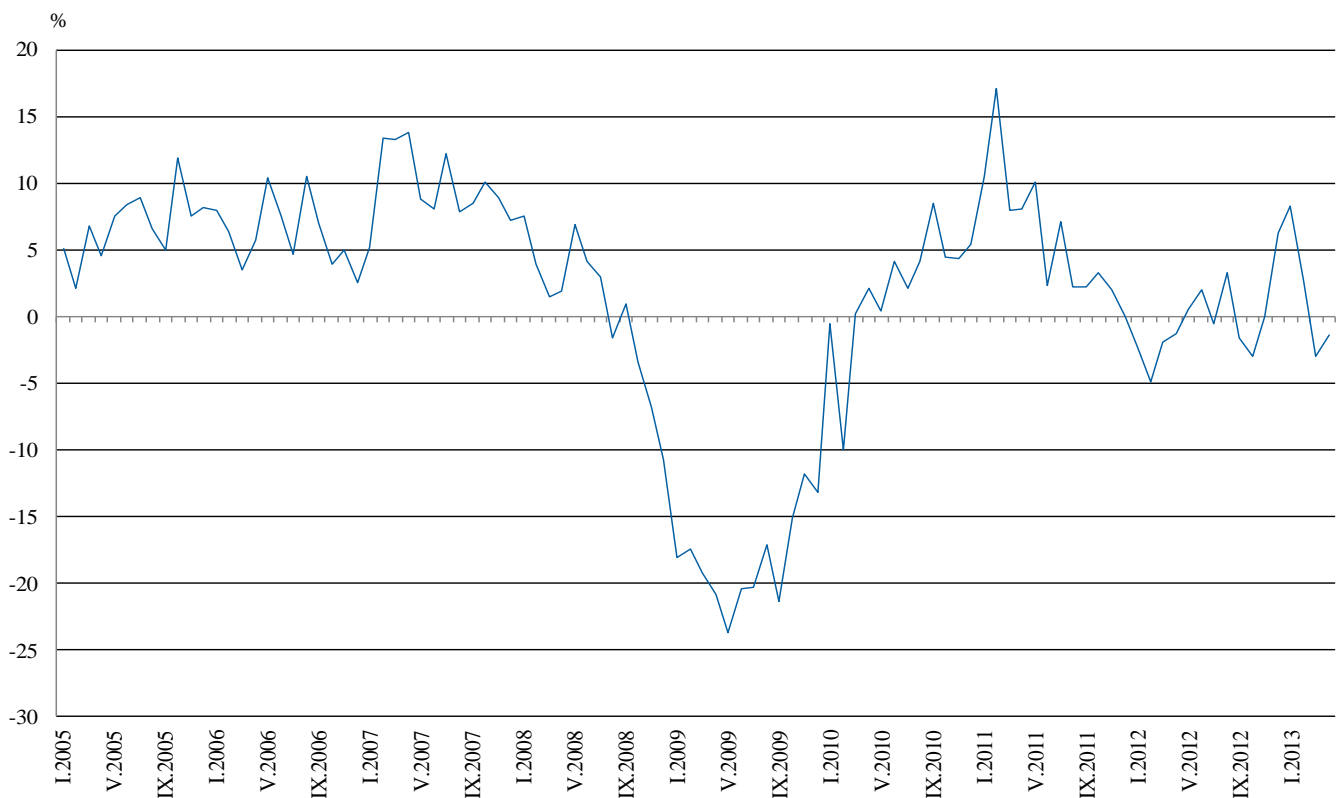
Annual comparisons

On annual basis in April 2013 Industrial Production Index, calculated from working day adjusted data decreased in the mining and quarrying industry by 13.2% and in the electricity, gas, steam and air conditioning supply by 2.6%, while in the manufacturing an increase by 1.6% was seen.

In the manufacturing, the more significant increases compared to the same month of the previous year were seen in the manufacture of tobacco products by 32.9%, in the printing and reproduction of recorded media by 27.1%, in the manufacture of furniture by 18.8%, in the manufacture of basic pharmaceutical products and pharmaceutical preparations by 14.3%, in the manufacture of rubber and plastic products by 11.9%, in the manufacture of machinery and equipment by 10.4%. Decreases were registered, in the manufacture of other transport equipment by 28.9%, in the manufacture of basic metals by 15.2%, in the manufacture of electrical equipment by 5.5%.

Figure 3. Percentage changes of Industrial Production Indices compared to the same month of the previous year

(Working day adjusted)



The final data on Industrial Production and Turnover Indices for March 2013 can be found on the NSI web-site: (<http://www.nsi.bg/otrasalen.php?otr=46>).

Percentage changes of Industrial Production Indices compared to the previous month¹

Economic Activities	NACE.BG - 2008 Code	2012		2013			
		XI	XII	I	II	III	IV
Industry	B_TO_E36	1.6	2.9	0.7	-4.6	-1.7	1.1
Mining and quarrying	B	-25.7	33.6	-7.2	-5.5	-10.7	0.6
of which:							
Mining of coal and lignite	B05	-23.1	39.1	-10.8	-12.2	-32.8	33.9
Mining of metal ores	B07	-27.7	43.9	-19.2	3.9	4.3	-10.7
Other mining and quarrying	B08	0.3	-16.7	-5.8	4.1	5.0	4.0
Manufacturing	C	1.2	-0.1	3.4	-1.7	-2.6	2.9
of which:							
Manufacture of food products	C10	-0.6	-0.7	1.7	-6.2	-0.5	5.1
Manufacture of beverages	C11	-4.7	-8.2	21.1	-9.9	-1.2	2.2
Manufacture of tobacco products	C12	-6.2	47.7	3.7	6.5	15.0	3.7
Manufacture of textiles	C13	5.8	7.9	4.5	-10.9	3.7	0.1
Manufacture of wearing apparel	C14	7.7	-0.8	4.6	-0.7	-2.7	8.1
Manufacture of leather and related products	C15	9.7	-9.9	8.9	-5.2	1.0	9.1
Manufacture of wood and of products of wood and cork, except furniture; manufacture of articles of straw and plaiting materials	C16	0.7	-10.1	14.5	-4.1	2.6	4.2
Manufacture of paper and paper products	C17	3.4	3.2	-0.2	6.9	2.1	-0.2
Printing and reproduction of recorded media	C18	18.6	-7.0	1.3	1.0	4.3	14.1
Manufacture of chemicals and chemical products	C20	-1.2	-2.3	9.4	-6.9	-1.7	4.3
Manufacture of basic pharmaceutical products and pharmaceutical preparations	C21	-3.0	1.0	14.3	-2.7	-0.8	4.1
Manufacture of rubber and plastic products	C22	4.8	-13.3	21.3	1.3	-9.9	9.8
Manufacture of other non-metallic mineral products	C23	6.9	-11.2	11.1	-7.3	-0.1	5.5
Manufacture of basic metals	C24	3.6	-5.7	64.2	-38.7	0.5	1.5
Manufacture of fabricated metal products, except machinery and equipment	C25	-1.1	-0.6	9.1	-13.1	6.9	-4.1
Manufacture of computer, electronic and optical products	C26	24.9	-19.3	18.1	15.6	-19.3	15.1
Manufacture of electrical equipment	C27	-0.2	9.0	-7.1	-4.2	-2.9	1.9
Manufacture of machinery and equipment n.e.c.	C28	2.7	1.8	6.2	-1.6	4.6	1.8
Manufacture of motor vehicles, trailers and semi-trailers	C29	1.9	-13.8	18.3	7.1	-5.0	3.8
Manufacture of other transport equipment	C30	-31.7	22.3	28.1	-18.1	-28.4	18.9
Manufacture of furniture	C31	0.8	0.3	8.5	-0.2	-7.4	5.6
Other manufacturing	C32	-11.3	-0.9	17.8	4.7	5.5	-6.4
Repair and installation of machinery and equipment	C32	11.4	-8.1	-11.2	0.5	-7.3	5.0
Electricity, gas, steam and air conditioning supply	D	11.1	7.1	-1.1	-16.9	3.7	-6.8
Electricity, gas, steam and air conditioning supply	D35	11.1	7.1	-1.1	-16.9	3.7	-6.8

¹ Seasonally adjusted.



Table 2

Percentage changes of Industrial Production Indices compared to the same month of the previous year¹

Economic Activities	NACE.BG -2008 Code	2012		2013			
		XI	XII	I	II	III	IV
Industry	B_TO_E36	0.0	6.3	8.3	2.7	-3.0	-1.3
Mining and quarrying	B	-17.0	-5.9	-5.9	-6.1	-21.4	-13.2
of which:							
Mining of coal and lignite	B05	-36.7	-1.3	-0.7	-18.5	-57.0	-29.2
Mining of metal ores	B07	25.9	-8.3	-6.3	7.7	1.8	-9.2
Other mining and quarrying	B08	41.0	8.1	-1.8	17.3	8.1	7.2
Manufacturing	C	0.8	2.3	6.1	7.3	-2.7	1.6
of which:							
Manufacture of food products	C10	-1.3	-0.9	2.0	-10.6	-12.2	-4.4
Manufacture of beverages	C11	5.1	-8.2	24.6	5.2	-6.2	-1.0
Manufacture of tobacco products	C12	-39.9	3.7	-6.4	0.3	16.3	32.9
Manufacture of textiles	C13	0.8	12.4	25.7	10.0	13.1	9.8
Manufacture of wearing apparel	C14	4.4	0.9	5.4	11.4	-1.4	12.7
Manufacture of leather and related products	C15	-9.7	-25.9	-9.6	-11.8	-12.7	8.0
Manufacture of wood and of products of wood and cork, except furniture; manufacture of articles of straw and plaiting materials	C16	4.7	-14.7	4.8	13.6	7.5	7.5
Manufacture of paper and paper products	C17	21.7	86.4	47.0	41.3	13.3	8.3
Printing and reproduction of recorded media	C18	7.6	2.1	3.6	3.3	4.3	27.1
Manufacture of chemicals and chemical products	C20	-6.3	-15.3	-8.0	-9.1	-16.2	8.1
Manufacture of basic pharmaceutical products and pharmaceutical preparations	C21	-5.1	-6.2	29.2	14.3	14.7	14.3
Manufacture of rubber and plastic products	C22	20.2	1.6	15.0	29.2	6.5	11.9
Manufacture of other non-metallic mineral products	C23	15.1	-3.5	8.7	43.1	1.7	4.5
Manufacture of basic metals	C24	-8.2	-12.5	27.9	-11.3	3.4	-15.2
Manufacture of fabricated metal products, except machinery and equipment	C25	-11.8	10.0	11.8	-2.2	1.1	1.4
Manufacture of computer, electronic and optical products	C26	3.8	2.2	-12.6	16.9	-8.1	0.5
Manufacture of electrical equipment	C27	12.4	31.6	19.8	10.5	-0.3	-5.5
Manufacture of machinery and equipment n.e.c.	C28	2.6	15.9	8.8	5.7	6.5	10.4
Manufacture of motor vehicles, trailers and semi-trailers	C29	7.2	-5.8	21.2	30.2	22.6	23.6
Manufacture of other transport equipment	C30	-34.2	47.3	9.6	-5.5	-45.9	-28.9
Manufacture of furniture	C31	3.5	6.3	19.4	32.6	11.9	18.8
Other manufacturing	C32	23.9	22.8	2.9	47.7	31.3	15.1
Repair and installation of machinery and equipment	C33	8.6	7.4	-5.7	-12.8	-10.0	-4.5
Electricity, gas, steam and air conditioning supply	D	6.1	17.0	18.4	-5.2	4.7	-2.6
Electricity, gas, steam and air conditioning supply	D35	6.1	17.0	18.4	-5.2	4.7	-2.6

¹ Working day adjusted.



Table 3

**Industrial Production Indices
(Seasonally adjusted, 2010=100)**

NACE.BG - 2008 Code	2012									2013			
	IV	V	VI	VII	VIII	IX	X	XI	XII	I	II	III	IV
B_TO_E36	104.7	106.1	106.0	105.7	107.3	105.3	105.0	106.7	109.7	110.6	105.5	103.7	104.8
B	97.5	103.9	105.3	113.0	112.1	112.7	110.8	82.3	109.9	102.0	96.4	86.1	86.6
B05	104.0	116.0	92.3	113.1	113.1	117.3	108.5	83.5	116.1	103.6	91.0	61.2	81.9
B07	97.1	82.8	112.4	96.4	99.7	98.1	108.3	78.3	112.7	91.1	94.6	98.7	88.2
B08	103.8	100.3	120.2	140.4	121.8	126.1	123.6	124.0	103.3	97.3	101.3	106.4	110.7
C	106.7	107.3	106.8	105.1	106.3	103.9	104.5	105.8	105.6	109.2	107.4	104.5	107.6
C10	95.2	95.3	93.4	94.9	95.3	90.9	92.5	91.9	91.3	92.9	87.1	86.7	91.1
C11	99.2	101.1	102.2	100.0	97.2	100.0	102.5	97.6	89.6	108.5	97.8	96.6	98.7
C12	121.0	135.4	145.6	138.7	120.6	133.8	83.3	78.2	115.4	119.7	127.5	146.6	152.1
C13	88.8	85.4	82.1	79.1	85.1	87.3	90.0	95.2	102.8	107.4	95.7	99.2	99.3
C14	96.2	92.8	99.9	92.3	95.4	91.0	89.8	96.7	96.0	100.4	99.7	97.0	104.9
C15	80.9	91.7	96.4	86.5	93.2	82.0	74.5	81.8	73.7	80.2	76.0	76.8	83.8
C16	100.4	111.4	104.4	105.1	99.1	95.2	100.5	101.2	91.0	104.2	99.9	102.5	106.9
C17	110.8	110.3	105.5	112.7	105.7	106.2	103.3	106.8	110.2	110.0	117.6	120.0	119.8
C18	92.1	92.7	90.7	87.3	84.2	85.3	84.9	100.7	93.6	94.8	95.8	99.9	114.0
C20	91.8	113.4	107.5	97.1	101.2	102.5	98.6	97.4	95.2	104.2	97.0	95.4	99.5
C21	124.5	126.6	127.3	142.5	124.6	132.7	125.0	121.2	122.4	139.9	136.1	135.1	140.5
C22	104.5	107.5	108.1	102.0	107.7	105.5	105.0	110.1	95.4	115.8	117.2	105.7	116.0
C23	110.5	105.4	104.3	106.6	107.9	104.0	111.2	118.9	105.6	117.4	108.8	108.7	114.7
C24	102.0	98.9	99.2	96.3	91.7	95.0	92.6	95.9	90.4	148.5	91.0	91.4	92.8
C25	97.3	114.0	97.9	94.2	99.2	93.3	104.2	103.0	102.4	111.7	97.1	103.8	99.5
C26	133.2	136.8	141.3	110.1	111.7	118.3	104.2	130.2	105.1	124.1	143.5	115.9	133.4
C27	128.2	129.8	131.2	126.8	125.2	127.1	129.7	129.4	141.0	130.9	125.4	121.8	124.1
C28	127.2	131.4	128.3	123.4	131.1	120.1	119.6	122.9	125.1	132.8	130.6	136.6	139.0
C29	82.6	82.4	84.4	86.5	85.5	94.7	92.8	94.6	81.6	96.6	103.4	98.2	102.0
C30	117.2	88.5	139.9	90.2	74.5	80.0	114.2	77.9	95.3	122.1	100.0	71.6	85.1
C31	104.0	117.1	114.1	113.3	115.7	118.7	115.5	116.5	116.9	126.8	126.5	117.2	123.8
C32	126.7	133.5	123.3	121.8	138.4	138.0	137.1	121.6	120.5	141.9	148.6	156.7	146.7
C33	87.0	98.4	89.8	78.7	97.3	71.0	94.2	104.9	96.4	85.6	86.0	79.7	83.7
D	99.4	104.0	103.6	112.2	113.3	105.1	104.3	116.0	124.2	122.9	102.1	106.0	98.8
D35	99.4	104.0	103.6	112.2	113.3	105.1	104.3	116.0	124.2	122.9	102.1	106.0	98.8



Table 4

Industrial Production Indices
(Working day adjusted, 2010=100)

NACE.BG - 2008 Code	2010	2011	2012									2013			
	IV	IV	IV	V	VI	VII	VIII	IX	X	XI	XII	I	II	III	IV
B_TO_E36	95.5	103.2	102.0	103.8	109.6	110.8	106.4	104.6	107.6	110.7	113.7	103.6	96.3	103.5	100.6
B	90.0	103.8	93.1	97.7	101.0	112.7	109.7	116.5	124.3	89.4	117.9	95.3	89.9	83.5	80.8
B05	58.0	116.2	82.0	104.8	73.7	111.0	108.1	123.6	130.7	96.9	128.9	110.4	87.8	49.9	58.1
B07	121.0	88.6	97.1	82.8	112.4	96.4	99.7	98.1	108.3	78.3	112.7	91.1	94.6	98.7	88.2
B08	87.7	93.5	101.1	104.0	131.4	156.0	131.7	139.6	143.2	140.1	109.9	62.7	72.6	95.9	108.4
C	98.1	102.1	106.3	110.2	117.3	112.6	106.6	106.8	109.3	110.3	101.7	93.5	92.6	103.5	107.9
C10	91.0	92.0	91.7	92.6	95.9	96.2	98.9	98.5	101.8	97.9	95.6	77.7	75.1	85.4	87.7
C11	99.0	96.9	98.0	109.2	124.7	126.9	121.8	109.6	94.3	89.6	93.0	69.4	63.2	89.4	97.0
C12	75.8	93.3	106.2	145.0	173.2	160.2	122.9	139.7	98.5	86.2	111.4	89.5	95.2	142.2	141.1
C13	117.2	120.7	99.3	93.4	93.8	83.5	68.0	82.3	89.1	100.4	90.8	91.7	91.8	110.5	109.1
C14	90.6	91.6	88.1	83.7	108.3	106.9	95.3	88.0	87.3	96.2	97.5	101.7	99.1	93.8	99.3
C15	88.2	88.8	66.4	80.6	108.1	107.5	96.6	89.9	74.4	79.7	65.9	79.4	71.8	75.3	71.7
C16	98.9	101.9	96.6	110.5	114.5	116.9	103.2	105.5	114.4	111.5	86.6	80.1	78.9	96.8	103.8
C17	91.5	120.2	115.7	112.8	115.4	120.3	106.5	109.1	98.2	102.5	105.3	100.3	110.6	126.9	125.3
C18	103.3	85.4	87.0	87.1	94.0	86.7	84.8	89.1	93.4	112.7	107.6	79.4	84.7	95.0	110.6
C20	98.8	115.0	95.2	111.8	111.9	97.7	95.4	103.3	95.9	100.6	94.2	97.2	91.2	105.2	102.8
C21	97.0	109.0	122.7	122.3	146.2	133.0	121.2	134.9	136.3	126.4	120.1	112.9	137.4	139.2	140.2
C22	96.4	96.2	101.4	105.8	118.0	112.0	112.2	113.0	117.8	118.7	86.7	93.8	98.4	104.2	113.5
C23	97.5	109.1	114.9	112.7	116.8	116.9	112.6	113.7	126.1	129.3	88.6	83.1	86.9	104.7	120.0
C24	105.0	107.5	123.1	100.7	99.5	113.2	80.6	89.4	97.5	109.8	68.3	139.2	88.8	89.0	104.4
C25	93.9	109.3	97.6	112.4	105.0	97.3	98.4	95.2	104.8	108.8	120.7	81.5	85.5	106.9	98.9
C26	100.6	103.9	130.3	133.2	150.0	108.8	101.0	125.4	104.9	136.9	129.9	106.2	127.1	118.0	131.0
C27	94.7	100.0	128.6	126.3	143.4	136.5	110.5	131.2	140.9	140.5	136.3	114.0	111.1	118.3	121.6
C28	97.4	102.3	125.6	130.5	143.8	132.4	122.2	120.9	123.7	126.9	119.2	112.7	123.8	147.1	138.7
C29	107.3	89.9	84.8	84.5	89.8	85.9	74.8	95.8	99.1	105.4	75.6	89.8	96.8	101.7	104.9
C30	84.1	92.9	107.9	122.1	173.5	93.4	69.1	77.5	99.9	67.5	102.1	77.6	82.0	71.8	76.8
C31	95.1	103.8	99.6	114.2	120.9	117.6	116.9	122.4	126.3	125.9	123.8	105.3	110.0	116.0	118.4
C32	102.8	94.2	122.8	134.0	140.0	121.7	141.4	149.3	160.3	128.7	109.5	115.1	128.2	154.6	141.3
C33	94.9	88.3	79.6	92.0	93.8	78.7	97.2	73.6	98.6	116.9	133.0	58.5	72.2	78.1	76.0
D	88.6	108.5	91.5	86.8	89.3	104.3	103.9	92.1	98.3	124.6	149.7	141.9	112.3	115.5	89.1
D35	88.6	108.5	91.5	86.8	89.3	104.3	103.9	92.1	98.3	124.6	149.7	141.9	112.3	115.5	89.1