



INDUSTRIAL PRODUCTION INDICES IN FEBRUARY 2013¹

In compliance with Regulation (EC) № 1165/98 and amendment Regulation (EC) № 1158/2005 since January 2013 the base year for Short-term business statistics has been changed. All short-term indicators presented in the form of index are calculated and published at 2010 as a base year. The time series has been recalculated according to the new base year and are posted on the website of NSI:

<http://www.nsi.bg/otrasalen.php?otr=55>.

The preliminary data showed that the Industrial Production Index², seasonally adjusted³, decreased by 2.0% in February 2013 as compared to January 2013.

In February 2013 working day adjusted⁴ Industrial Production Index rose by 5.1% in comparison with the same month of 2012.

¹ February 2013 data are preliminary.

² Monthly Industrial Production and Industrial turnover indices measure changes in production and turnover values of industrial enterprises. This information can be used to assess the current economic development and for short-term forecasts. Indices do not measure the actual production level, it aims to measure the average change in value of production between two points of time. Indices are compiled on the base of information collected through representative sampling survey on industrial enterprises. The sample covers enterprises with annual turnover more than 97% of total turnover in industry. Industrial production indices are calculated at constant base year that is to say they are weighted with the structure of the value added at factor costs in the base year.

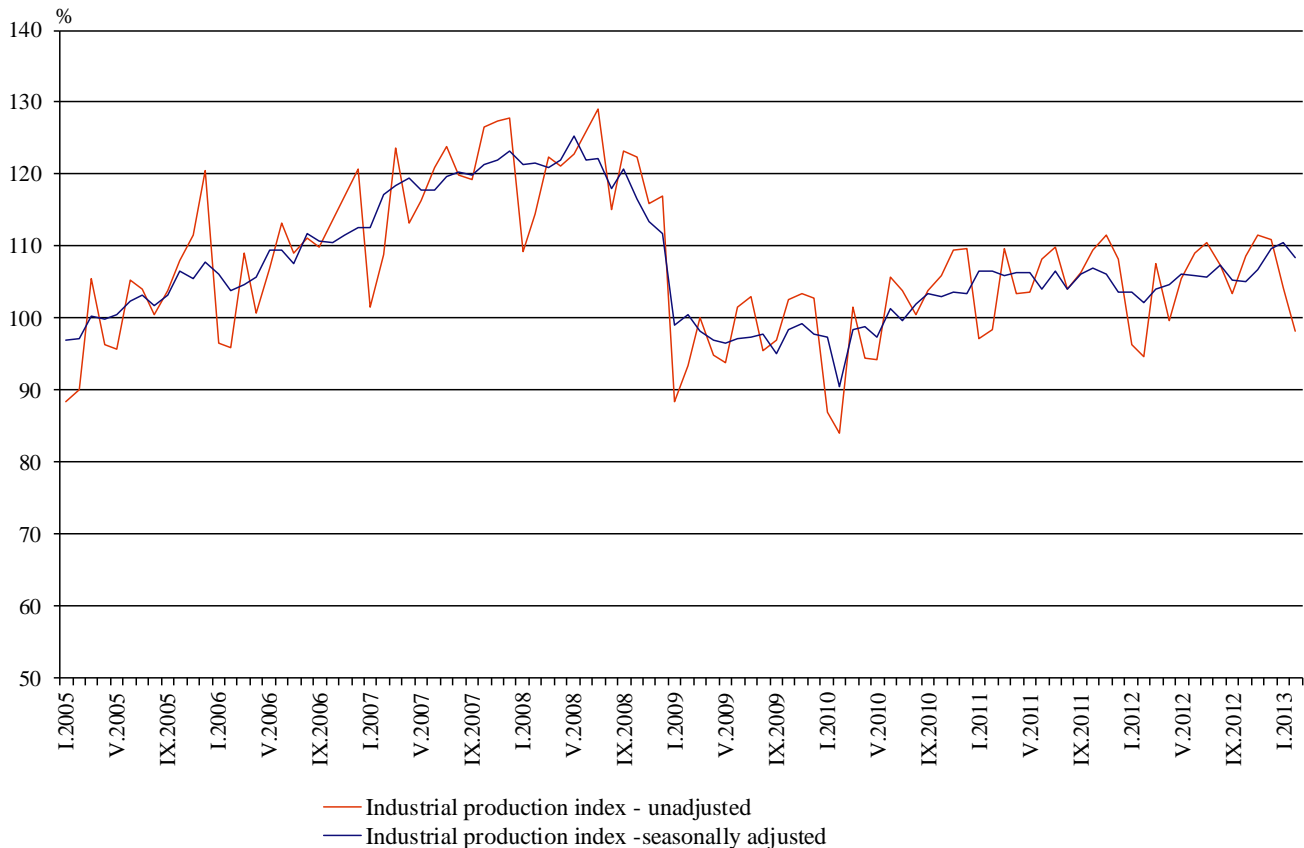
³ Seasonal adjustment is a statistical method, which eliminates the seasonal component of time series and it is particularly suitable for long-term comparisons and analysis of the data.

⁴ Working day adjustment is an adjustment for variations caused by calendar effects, different number of calendar and working days in the months, national holidays and outliers (for example the presence of more non-working days in May could contribute to the decline in the production in some activities).

The seasonally and working day adjusted data on Industrial production index by months, starting from January 2000 can be found in NSI internet web-site: (<http://www.nsi.bg/otrasalen.php?otr=46>).



Figure 1. Industrial Production Indices (2010=100)



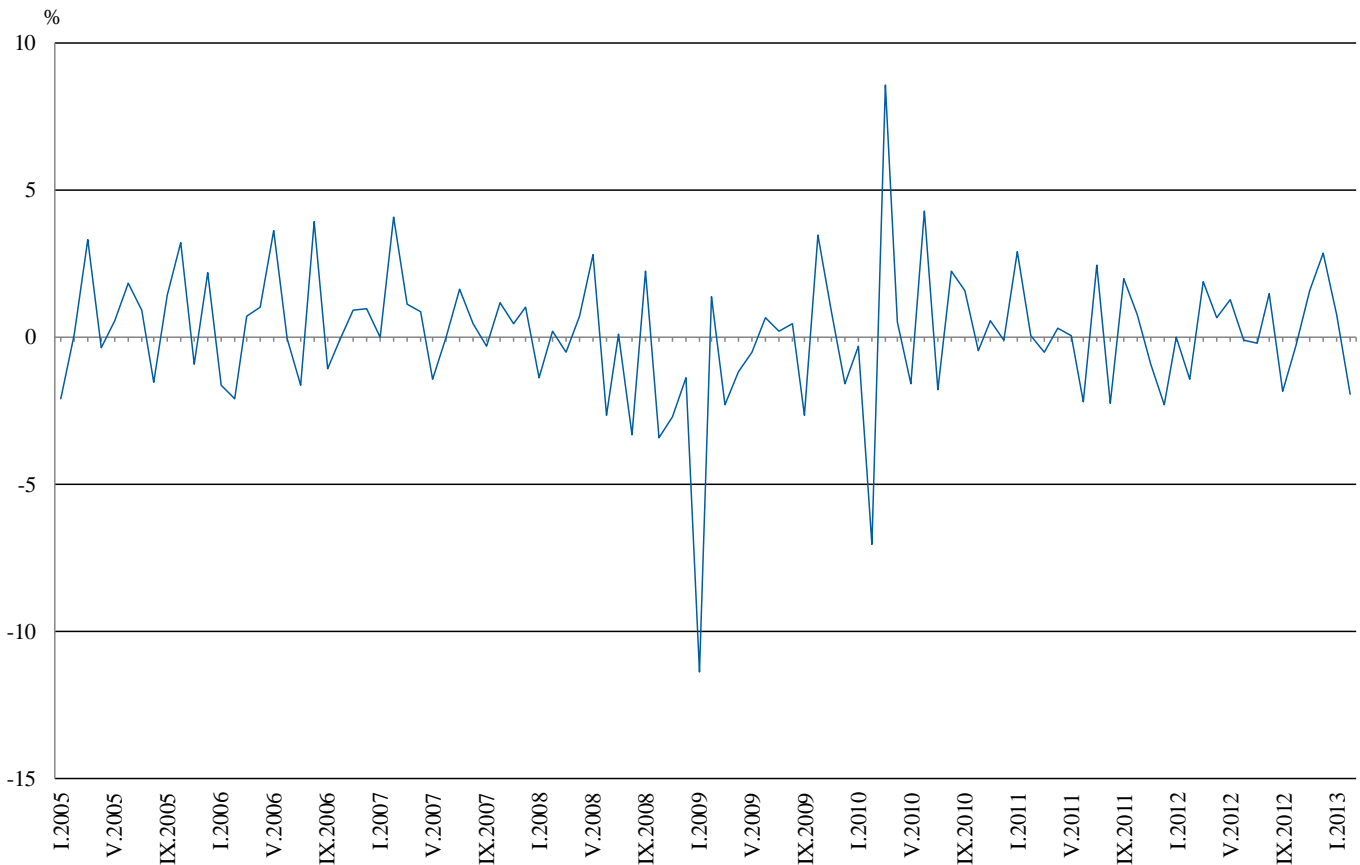
Monthly comparisons

In February 2013 as compared to January 2013, the seasonally adjusted Industrial Production Index decreased in the electricity, gas, steam and air conditioning supply by 9.4%, in the mining and quarrying industry by 5.4% and in the manufacturing by 0.7%.

The most significant decreases of production in the manufacturing were seen in the manufacture of basic metals by 39.9%, in the manufacture of fabricated metal products, except machinery and equipment by 12.6%, in the manufacture of textiles by 11.4%, in the manufacture of beverages by 8.4%, in the manufacture of chemicals and chemical products by 8.3%, in the manufacture of food products by 6.0%. There was increase in the manufacture of computer, electronic and optical products by 18.0%, in the manufacture of paper and paper products by 8.7%, in the manufacture of tobacco products by 6.7%.



Figure 2. Percentage changes of Industrial Production Indices compared to the previous month (seasonally adjusted)



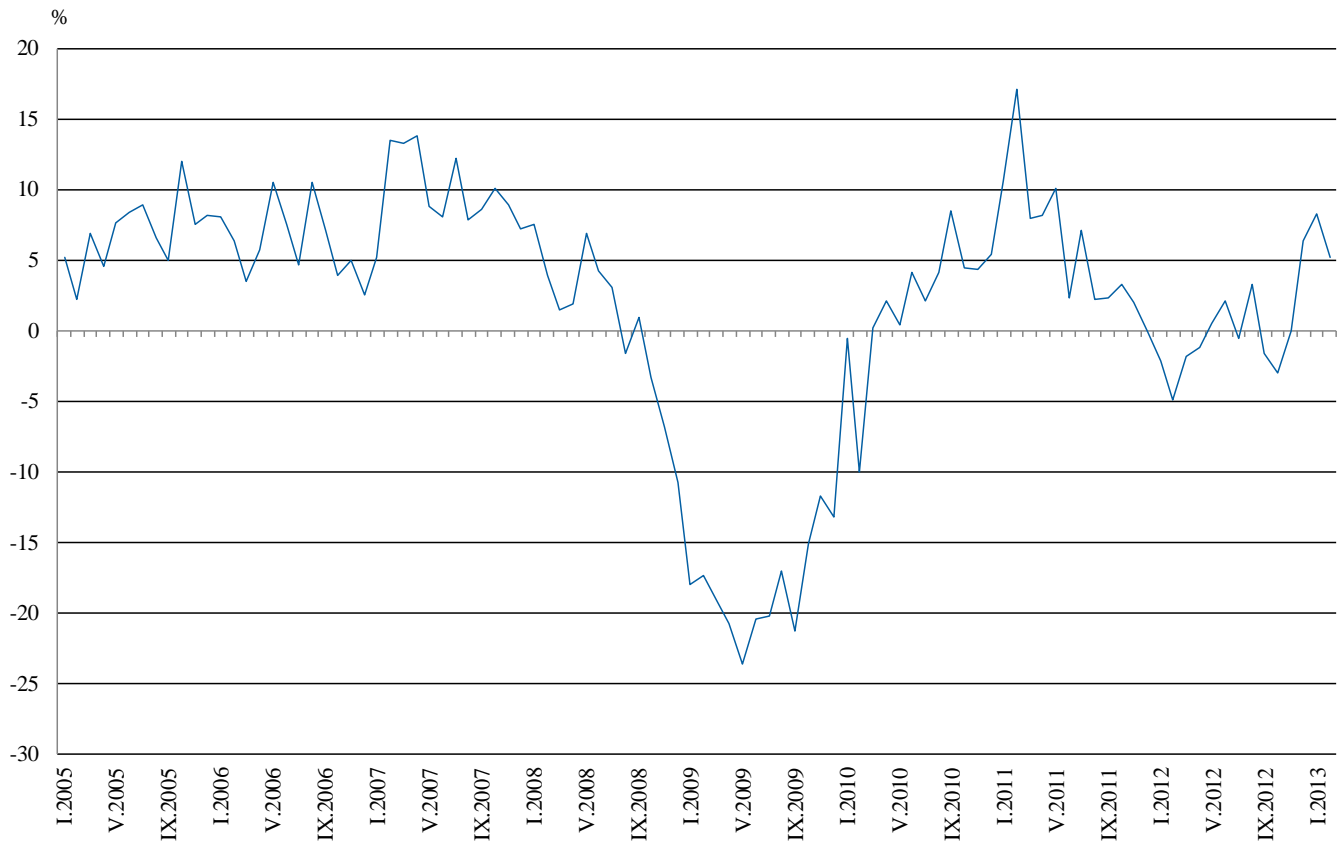
Annual comparisons

On annual basis in February 2013 Industrial Production Index, calculated from working day adjusted data increased in the manufacturing by 7.4% and in the electricity, gas, steam and air conditioning supply by 3.6%, while in the mining and quarrying industry a decrease by 6.0% was seen.

In the manufacturing, the more significant increases compared to the same month of the previous year were seen in the manufacture of other non-metallic mineral products by 41.5%, in the manufacture of paper and paper products by 41.0%, in the manufacture of rubber and plastic products by 29.3%, in the manufacture of basic pharmaceutical products and pharmaceutical preparations by 14.3%, in the manufacture of wood and of products of wood and cork, except furniture; manufacture of articles of straw and plaiting materials by 12.3%. Decreases were registered in the manufacture of basic metals by 11.0%, in the manufacture of chemicals and chemical products by 10.8%, the manufacture of food products by 10.5%.



Figure 3. Percentage changes of Industrial Production Indices compared to the same month of the previous year
(working day adjusted)



The final data on Industrial Production and Turnover Indices for January 2013 can be found in NSI internet web-site: (<http://www.nsi.bg/otrasalen.php?otr=46>).

Percentage changes of Industrial Production Indices compared to the previous month¹

Economic Activities	NACE.BG - 2008 Code	2012				2013	
		IX	X	XI	XII	I	II
Industry	B_TO_E36	-1.8	-0.3	1.6	2.9	0.7	-2.0
Mining and quarrying	B	0.5	-1.7	-25.7	33.6	-7.2	-5.4
of which:							
Mining of coal and lignite	B05	3.7	-7.5	-23.1	39.1	-10.8	-11.4
Mining of metal ores	B07	-1.6	10.4	-27.7	43.9	-19.2	3.6
Other mining and quarrying	B08	3.5	-2.0	0.3	-16.7	-5.8	3.7
Manufacturing	C	-2.2	0.5	1.2	-0.1	3.4	-0.7
of which:							
Manufacture of food products	C10	-4.6	1.7	-0.6	-0.7	1.7	-6.0
Manufacture of beverages	C11	2.9	2.5	-4.7	-8.2	21.1	-8.4
Manufacture of tobacco products	C12	10.9	-37.7	-6.2	47.7	3.7	6.7
Manufacture of textiles	C13	2.6	3.1	5.8	7.9	4.5	-11.4
Manufacture of wearing apparel	C14	-4.6	-1.3	7.7	-0.8	4.6	0.7
Manufacture of leather and related products	C15	-12.0	-9.1	9.7	-9.9	8.9	-5.1
Manufacture of wood and of products of wood and cork, except furniture; manufacture of articles of straw and plaiting materials	C16	-4.0	5.6	0.7	-10.1	14.5	-4.4
Manufacture of paper and paper products	C17	0.5	-2.7	3.4	3.2	-0.2	8.7
Printing and reproduction of recorded media	C18	1.3	-0.5	18.6	-7.0	1.3	0.0
Manufacture of chemicals and chemical products	C20	1.3	-3.8	-1.2	-2.3	9.4	-8.3
Manufacture of basic pharmaceutical products and pharmaceutical preparations	C21	6.5	-5.8	-3.0	1.0	14.3	-2.7
Manufacture of rubber and plastic products	C22	-2.1	-0.4	4.8	-13.3	21.3	2.0
Manufacture of other non-metallic mineral products	C23	-3.6	6.9	6.9	-11.2	11.1	-7.6
Manufacture of basic metals	C24	3.6	-2.6	3.6	-5.7	64.2	-39.9
Manufacture of fabricated metal products, except machinery and equipment	C25	-5.9	11.7	-1.1	-0.6	9.1	-12.6
Manufacture of computer, electronic and optical products	C26	5.9	-11.9	24.9	-19.3	18.1	18.0
Manufacture of electrical equipment	C27	1.5	2.0	-0.2	9.0	-7.1	-2.6
Manufacture of machinery and equipment n.e.c.	C28	-8.4	-0.4	2.7	1.8	6.2	-1.0
Manufacture of motor vehicles, trailers and semi-trailers	C29	10.8	-1.9	1.9	-13.8	18.3	6.8
Manufacture of other transport equipment	C30	7.3	42.8	-31.7	22.3	28.1	-16.7
Manufacture of furniture	C31	2.6	-2.7	0.8	0.3	8.5	-0.7
Other manufacturing	C32	-0.3	-0.6	-11.3	-0.9	17.8	4.4
Repair and installation of machinery and equipment	C32	-27.0	32.6	11.4	-8.1	-11.2	1.2
Electricity, gas, steam and air conditioning supply	D	-7.2	-0.7	11.1	7.1	-1.1	-9.4
Electricity, gas, steam and air conditioning supply	D35	-7.2	-0.7	11.1	7.1	-1.1	-9.4

¹ Seasonally adjusted.



Table 2

Percentage changes of Industrial Production Indices compared to the same month of the previous year¹

Economic Activities	NACE.BG -2008 Code	2012				2013	
		IX	X	XI	XII	I	II
Industry	B_TO_E36	-1.6	-3.0	0.0	6.3	8.3	5.1
Mining and quarrying	B	2.9	-0.6	-17.0	-5.9	-5.9	-6.0
of which:							
Mining of coal and lignite	B05	0.6	-9.4	-36.7	-1.3	-0.7	-18.6
Mining of metal ores	B07	-5.6	3.3	25.9	-8.3	-6.3	7.4
Other mining and quarrying	B08	48.8	28.0	41.0	8.1	-1.8	17.4
Manufacturing	C	-3.7	-2.5	0.8	2.3	6.1	7.4
of which:							
Manufacture of food products	C10	-3.7	-3.8	-1.3	-0.9	2.0	-10.5
Manufacture of beverages	C11	-2.0	7.1	5.1	-8.2	24.6	6.4
Manufacture of tobacco products	C12	28.1	-11.2	-39.9	3.7	-6.4	1.5
Manufacture of textiles	C13	-14.8	-4.0	0.8	12.4	25.7	9.7
Manufacture of wearing apparel	C14	-13.5	-11.9	4.4	0.9	5.4	12.2
Manufacture of leather and related products	C15	-20.4	-24.2	-9.7	-25.9	-9.6	-11.8
Manufacture of wood and of products of wood and cork, except furniture; manufacture of articles of straw and plaiting materials	C16	-8.9	0.5	4.7	-14.7	4.8	12.3
Manufacture of paper and paper products	C17	-3.7	8.8	21.7	86.4	47.0	41.0
Printing and reproduction of recorded media	C18	-5.5	-16.0	7.6	2.1	3.6	2.3
Manufacture of chemicals and chemical products	C20	-10.0	-10.2	-6.3	-15.3	-8.0	-10.8
Manufacture of basic pharmaceutical products and pharmaceutical preparations	C21	20.1	3.2	-5.1	-6.2	29.2	14.3
Manufacture of rubber and plastic products	C22	0.3	2.6	20.2	1.6	15.0	29.3
Manufacture of other non-metallic mineral products	C23	-10.5	-2.0	15.1	-3.5	8.7	41.5
Manufacture of basic metals	C24	1.6	-19.5	-8.2	-12.5	27.9	-11.0
Manufacture of fabricated metal products, except machinery and equipment	C25	-23.8	-20.8	-11.8	10.0	11.8	-1.7
Manufacture of computer, electronic and optical products	C26	8.8	-11.9	3.8	2.2	-12.6	16.9
Manufacture of electrical equipment	C27	22.3	23.1	12.4	31.6	19.8	11.3
Manufacture of machinery and equipment n.e.c.	C28	-0.2	0.8	2.6	15.9	8.8	6.9
Manufacture of motor vehicles, trailers and semi-trailers	C29	14.8	-3.8	7.2	-5.8	21.2	30.0
Manufacture of other transport equipment	C30	-18.2	58.1	-34.2	47.3	9.6	-5.3
Manufacture of furniture	C31	4.6	-1.7	3.5	6.3	19.4	30.7
Other manufacturing	C32	30.1	32.4	23.9	22.8	2.9	47.7
Repair and installation of machinery and equipment	C33	-41.4	8.9	8.6	7.4	-5.7	-12.7
Electricity, gas, steam and air conditioning supply	D	4.0	-4.4	6.1	17.0	18.4	3.6
Electricity, gas, steam and air conditioning supply	D35	4.0	-4.4	6.1	17.0	18.4	3.6

¹ Working day adjusted.



Table 3

Industrial Production Indices
(seasonally adjusted, 2010=100)

NACE.BG - 2008 Code	2012											2013	
	II	III	IV	V	VI	VII	VIII	IX	X	XI	XII	I	II
B_TO_E36	102.1	104.0	104.7	106.1	106.0	105.7	107.3	105.3	105.0	106.7	109.7	110.6	108.4
B	102.0	108.0	97.5	103.9	105.3	113.0	112.1	112.7	110.8	82.3	109.9	102.0	96.5
B05	107.6	117.8	104.0	116.0	92.3	113.1	113.1	117.3	108.5	83.5	116.1	103.6	91.8
B07	87.9	97.0	97.1	82.8	112.4	96.4	99.7	98.1	108.3	78.3	112.7	91.1	94.4
B08	85.2	98.1	103.8	100.3	120.2	140.4	121.8	126.1	123.6	124.0	103.3	97.3	100.9
C	101.1	105.0	106.7	107.3	106.8	105.1	106.3	103.9	104.5	105.8	105.6	109.2	108.5
C10	97.2	98.3	95.2	95.3	93.4	94.9	95.3	90.9	92.5	91.9	91.3	92.9	87.3
C11	92.6	101.5	99.2	101.1	102.2	100.0	97.2	100.0	102.5	97.6	89.6	108.5	99.4
C12	127.7	131.2	121.0	135.4	145.6	138.7	120.6	133.8	83.3	78.2	115.4	119.7	127.8
C13	85.1	87.1	88.8	85.4	82.1	79.1	85.1	87.3	90.0	95.2	102.8	107.4	95.2
C14	91.8	95.6	96.2	92.8	99.9	92.3	95.4	91.0	89.8	96.7	96.0	100.4	101.1
C15	84.3	86.0	80.9	91.7	96.4	86.5	93.2	82.0	74.5	81.8	73.7	80.2	76.1
C16	90.9	95.3	100.4	111.4	104.4	105.1	99.1	95.2	100.5	101.2	91.0	104.2	99.7
C17	85.6	106.5	110.8	110.3	105.5	112.7	105.7	106.2	103.3	106.8	110.2	110.0	119.6
C18	93.3	95.8	92.1	92.7	90.7	87.3	84.2	85.3	84.9	100.7	93.6	94.8	94.8
C20	106.5	113.3	91.8	113.4	107.5	97.1	101.2	102.5	98.6	97.4	95.2	104.2	95.5
C21	120.7	116.9	124.5	126.6	127.3	142.5	124.6	132.7	125.0	121.2	122.4	139.9	136.2
C22	92.7	97.8	104.5	107.5	108.1	102.0	107.7	105.5	105.0	110.1	95.4	115.8	118.1
C23	75.5	105.4	110.5	105.4	104.3	106.6	107.9	104.0	111.2	118.9	105.6	117.4	108.5
C24	101.4	95.4	102.0	98.9	99.2	96.3	91.7	95.0	92.6	95.9	90.4	148.5	89.2
C25	98.2	102.6	97.3	114.0	97.9	94.2	99.2	93.3	104.2	103.0	102.4	111.7	97.6
C26	127.0	124.5	133.2	136.8	141.3	110.1	111.7	118.3	104.2	130.2	105.1	124.1	146.5
C27	110.7	118.0	128.2	129.8	131.2	126.8	125.2	127.1	129.7	129.4	141.0	130.9	127.5
C28	123.5	129.2	127.2	131.4	128.3	123.4	131.1	120.1	119.6	122.9	125.1	132.8	131.4
C29	80.4	80.2	82.6	82.4	84.4	86.5	85.5	94.7	92.8	94.6	81.6	96.6	103.1
C30	110.1	120.1	117.2	88.5	139.9	90.2	74.5	80.0	114.2	77.9	95.3	122.1	101.8
C31	96.5	103.4	104.0	117.1	114.1	113.3	115.7	118.7	115.5	116.5	116.9	126.8	125.9
C32	101.2	119.8	126.7	133.5	123.3	121.8	138.4	138.0	137.1	121.6	120.5	141.9	148.2
C33	98.4	87.0	87.0	98.4	89.8	78.7	97.3	71.0	94.2	104.9	96.4	85.6	86.6
D	105.8	100.1	99.4	104.0	103.6	112.2	113.3	105.1	104.3	116.0	124.2	122.9	111.3
D35	105.8	100.1	99.4	104.0	103.6	112.2	113.3	105.1	104.3	116.0	124.2	122.9	111.3



Table 4

Industrial Production Indices
(working day adjusted, 2010=100)

NACE.BG - 2008 Code	2010	2011	2012												2013	
	II	II	II	III	IV	V	VI	VII	VIII	IX	X	XI	XII	I	II	
B_TO_E36	84.2	98.6	93.8	106.8	102.0	103.8	109.6	110.8	106.4	104.6	107.6	110.7	113.7	103.6	98.6	
B	93.7	92.6	95.7	106.3	93.1	97.7	101.0	112.7	109.7	116.5	124.3	89.4	117.9	95.3	89.9	
B05	102.5	114.4	107.8	116.2	82.0	104.8	73.7	111.0	108.1	123.6	130.7	96.9	128.9	110.4	87.7	
B07	90.5	71.9	87.9	97.0	97.1	82.8	112.4	96.4	99.7	98.1	108.3	78.3	112.7	91.1	94.4	
B08	77.9	76.5	61.9	88.7	101.1	104.0	131.4	156.0	131.7	139.6	143.2	140.1	109.9	62.7	72.6	
C	74.7	91.8	86.3	106.4	106.3	110.2	117.3	112.6	106.6	106.8	109.3	110.3	101.7	93.5	92.7	
C10	82.1	88.0	84.0	97.2	91.7	92.6	95.9	96.2	98.9	98.5	101.8	97.9	95.6	77.7	75.2	
C11	58.4	70.9	60.0	95.3	98.0	109.2	124.7	126.9	121.8	109.6	94.3	89.6	93.0	69.4	63.9	
C12	49.4	76.2	94.9	122.3	106.2	145.0	173.2	160.2	122.9	139.7	98.5	86.2	111.4	89.5	96.3	
C13	84.7	103.6	83.5	97.7	99.3	93.4	93.8	83.5	68.0	82.3	89.1	100.4	90.8	91.7	91.6	
C14	93.6	103.9	88.9	95.1	88.1	83.7	108.3	106.9	95.3	88.0	87.3	96.2	97.5	101.7	99.8	
C15	110.0	94.3	81.4	86.3	66.4	80.6	108.1	107.5	96.6	89.9	74.4	79.7	65.9	79.4	71.8	
C16	71.1	89.7	69.5	90.1	96.6	110.5	114.5	116.9	103.2	105.5	114.4	111.5	86.6	80.1	78.0	
C17	79.8	106.9	78.2	111.9	115.7	112.8	115.4	120.3	106.5	109.1	98.2	102.5	105.3	100.3	110.3	
C18	84.2	88.0	81.9	91.1	87.0	87.1	94.0	86.7	84.8	89.1	93.4	112.7	107.6	79.4	83.8	
C20	79.3	120.4	100.3	125.6	95.2	111.8	111.9	97.7	95.4	103.3	95.9	100.6	94.2	97.2	89.5	
C21	97.7	104.4	120.2	121.4	122.7	122.3	146.2	133.0	121.2	134.9	136.3	126.4	120.1	112.9	137.5	
C22	71.7	92.3	76.1	97.8	101.4	105.8	118.0	112.0	112.2	113.0	117.8	118.7	86.7	93.8	98.5	
C23	66.6	87.9	60.7	103.0	114.9	112.7	116.8	116.9	112.6	113.7	126.1	129.3	88.6	83.1	85.9	
C24	101.3	98.9	100.1	86.1	123.1	100.7	99.5	113.2	80.6	89.4	97.5	109.8	68.3	139.2	89.1	
C25	92.2	81.2	87.4	105.8	97.6	112.4	105.0	97.3	98.4	95.2	104.8	108.8	120.7	81.5	85.9	
C26	84.1	105.8	108.8	128.5	130.3	133.2	150.0	108.8	101.0	125.4	104.9	136.9	129.9	106.2	127.2	
C27	85.4	101.3	100.5	118.7	128.6	126.3	143.4	136.5	110.5	131.2	140.9	140.5	136.3	114.0	111.9	
C28	83.1	104.2	117.2	138.2	125.6	130.5	143.8	132.4	122.2	120.9	123.7	126.9	119.2	112.7	125.2	
C29	95.1	84.8	74.3	82.9	84.8	84.5	89.8	85.9	74.8	95.8	99.1	105.4	75.6	89.8	96.7	
C30	73.8	82.5	86.7	132.7	107.9	122.1	173.5	93.4	69.1	77.5	99.9	67.5	102.1	77.6	82.1	
C31	80.6	96.0	83.0	103.7	99.6	114.2	120.9	117.6	116.9	122.4	126.3	125.9	123.8	105.3	108.5	
C32	82.9	97.2	86.8	117.7	122.8	134.0	140.0	121.7	141.4	149.3	160.3	128.7	109.5	115.1	128.2	
C33	80.5	83.6	82.9	86.7	79.6	92.0	93.8	78.7	97.2	73.6	98.6	116.9	133.0	58.5	72.3	
D	111.1	123.4	118.4	110.3	91.5	86.8	89.3	104.3	103.9	92.1	98.3	124.6	149.7	141.9	122.6	
D35	111.1	123.4	118.4	110.3	91.5	86.8	89.3	104.3	103.9	92.1	98.3	124.6	149.7	141.9	122.6	