



INDUSTRIAL PRODUCTION INDICES IN JANUARY 2013¹

In compliance with Regulation (EC) № 1165/98 and amendment Regulation (EC) № 1158/2005 since January 2013 the base year for Short-term business statistics has been changed. All short-term indicators presented in the form of index are calculated and published at 2010 as a base year. The time series have been recalculated according to the new base year and with the publication of data for the first reporting period of 2013 they can be found on the website of NSI:

<http://www.nsi.bg/otrasalen.php?otr=55>.

The preliminary data showed that the Industrial Production Index² seasonally adjusted³ increased by 1.1% in January 2013 as compared to December 2012.

In January 2013 working day adjusted⁴ Industrial Production Index rose by 7.9% in comparison with the same month of 2012.

¹ Data for January 2013 are preliminary.

² Monthly Industrial Production and Industrial turnover indices measure changes in production and turnover values of industrial enterprises. This information can be used to assess the current economic development and for short-term forecasts. Indices do not measure the actual production level, it aims to measure the average change in value of production between two points of time. Indices are compiled on the basis of information collected through representative sampling survey on industrial enterprises. The sample covers enterprises with annual turnover more than 97% of total turnover in industry.

Industrial production indices are calculated at constant base year that is to say they are weighted with the structure of the value added at factor costs in the base year.

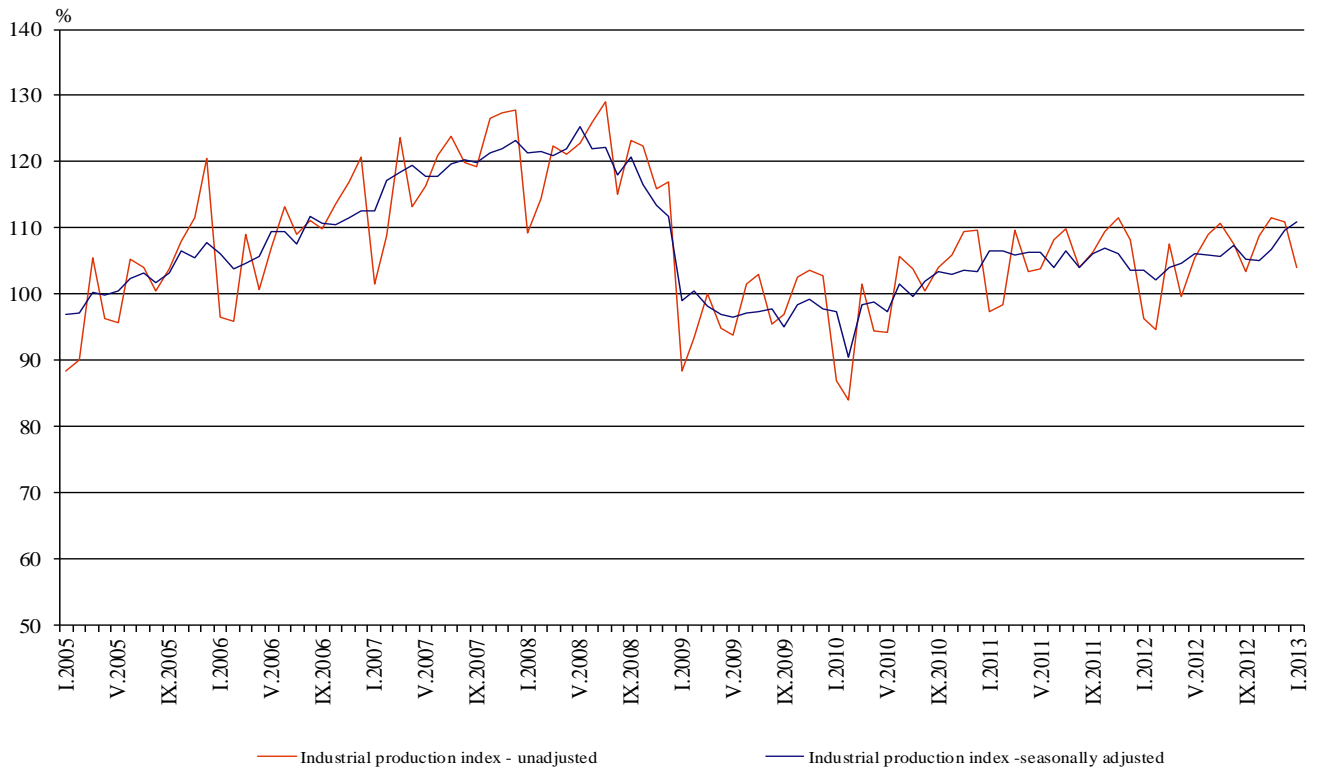
³ Seasonal adjustment is a statistical method, which eliminates the seasonal component of time series and it is particularly suitable for long-term comparisons and analysis of the data.

⁴ Working day adjustment is an adjustment for variations caused by calendar effects, different number of calendar and working days in the months, national holidays and outliers (for example the presence of more non-working days in May could contribute to the decline in the production in some activities).

The seasonally and working day adjusted data on Industrial production index by months starting from January 2000 can be found on NSI website: (<http://www.nsi.bg/otrasalen.php?otr=46>).



Figure 1. Industrial Production Indices (2010=100)



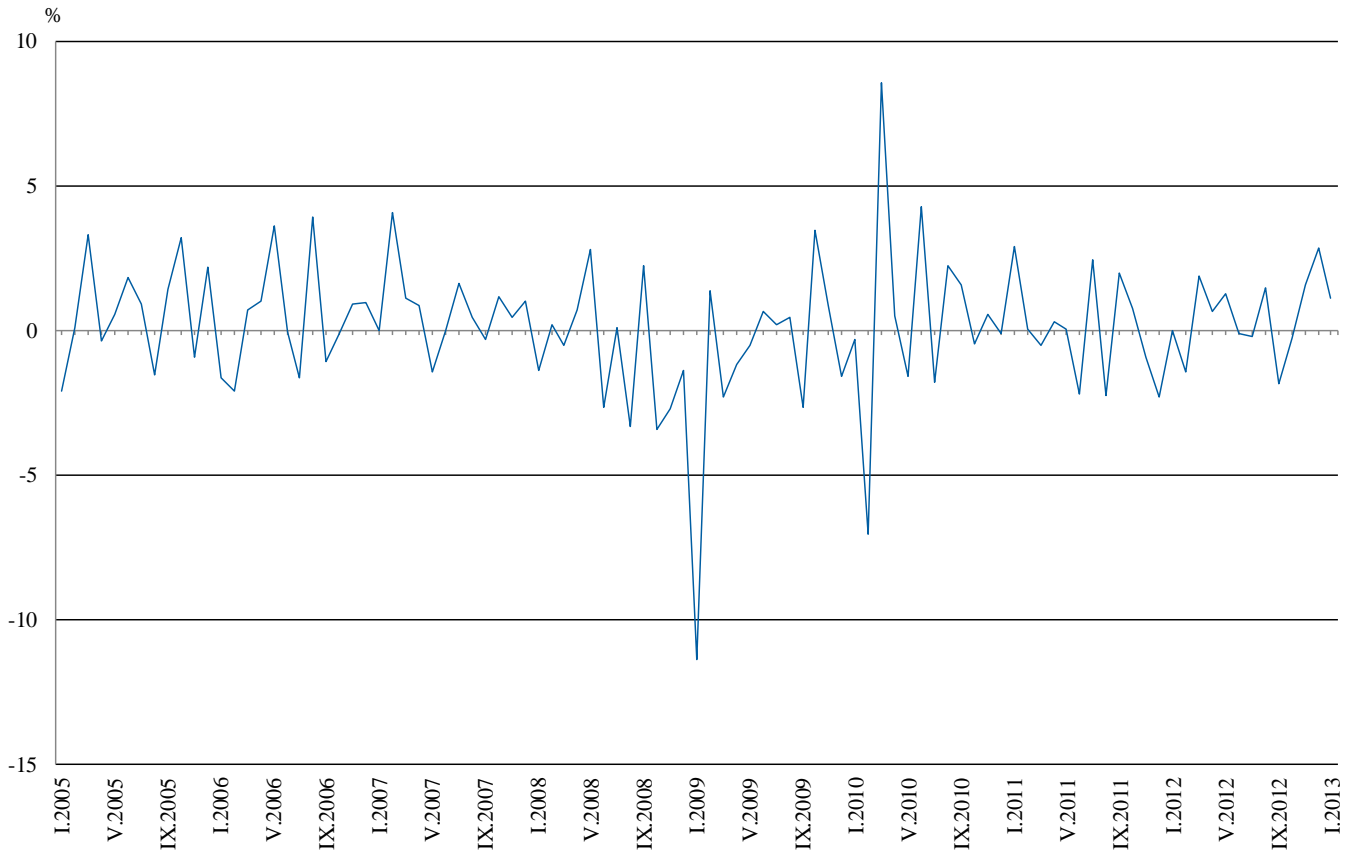
Monthly comparisons

In January 2013 as compared to December 2012, the seasonally adjusted Industrial Production Index increased by 2.9% in the manufacturing, while decreases were registered in the mining and quarrying industry by 6.8% and in the electricity, gas, steam and air conditioning supply by 0.8%.

The most significant increases of production in the manufacturing were seen in the manufacture of basic metals by 64.1%, in the manufacture of rubber and plastic products by 21.2%, in the manufacture of beverages by 19.8%, in the manufacture of basic pharmaceutical products and pharmaceutical preparations by 14.0%, in the manufacture of chemicals and chemical products by 9.9%. There was decrease in the repair and installation of machinery and equipment by 8.7%, in the printing and reproduction of recorded media by 2.1%, in the manufacture of electrical equipment by 1.9%, in the manufacture of paper and paper products by 1.8%.



Figure 2. Percentage changes of Industrial Production Indices compared to the previous month (Seasonally adjusted)



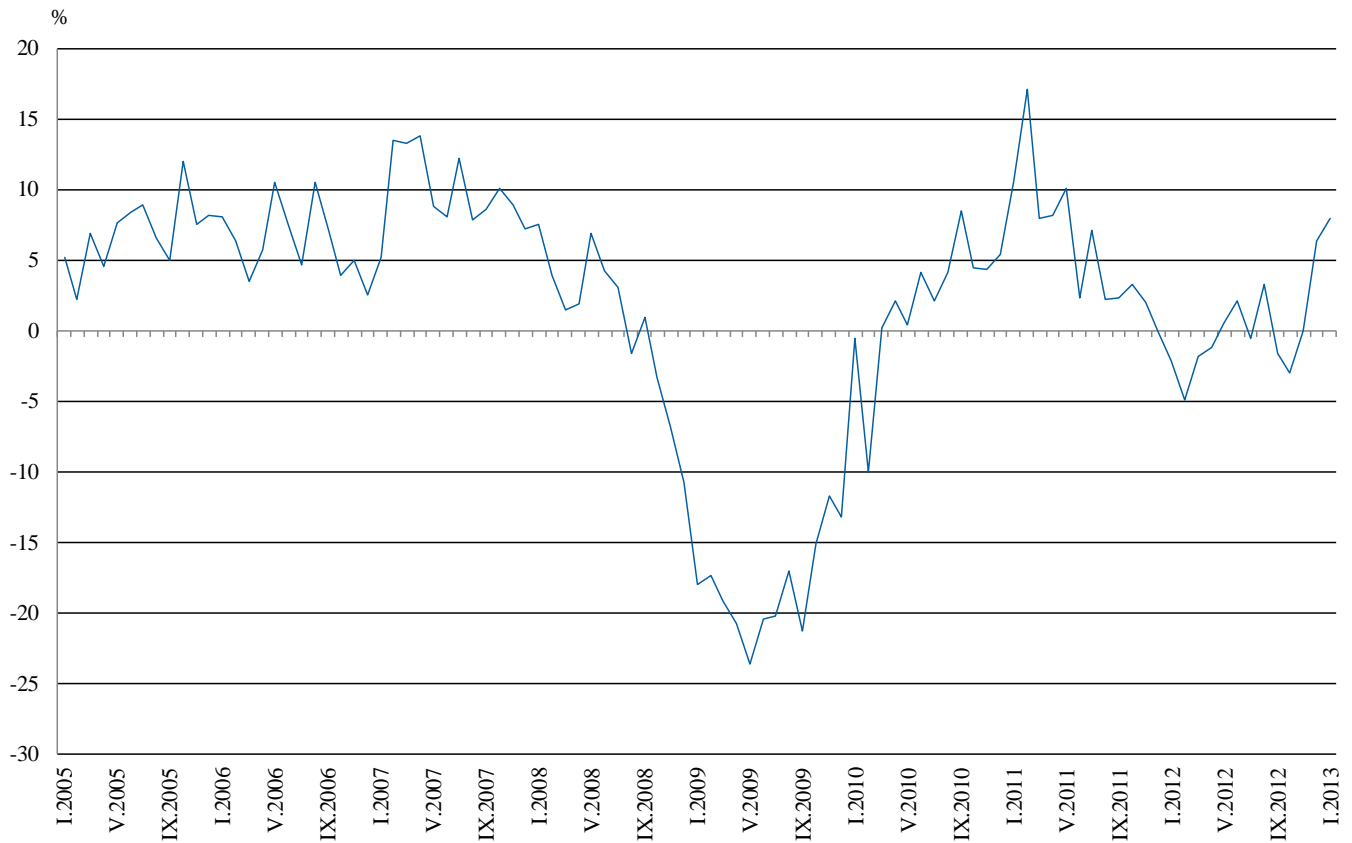
Annual comparisons

On annual basis in January 2013 Industrial Production Index calculated from working day adjusted data increased in the electricity, gas, steam and air conditioning supply by 18.4% and in the manufacturing by 5.6% while in the mining and quarrying industry a decrease by 5.6% was seen.

In the manufacturing, the more significant increases compared to the same month of the previous year were seen in the manufacture of paper and paper products by 45.1%, in the manufacture of basic pharmaceutical products and pharmaceutical preparations by 29.1%, in the manufacture of basic metals and in the manufacture of electrical equipment by 27.5%, in the manufacture of textiles by 22.3%. Decreases were registered in the manufacture of computer, electronic and optical products by 22.0%, in the manufacture of chemicals and chemical products by 7.8%, in the manufacture of tobacco products by 6.7%.



Figure 3. Percentage changes of Industrial Production Indices compared to the same month of the previous year (Working day adjusted)



The final data on Industrial Production and Turnover Indices for December 2012 can be found on NSI website: (<http://www.nsi.bg/otrasalen.php?otr=46>).

**Percentage changes of Industrial Production Indices compared to the previous month
(Seasonally adjusted)**

Economic Activities	NACE.BG - 2008 Code	2012					2013
		VIII	IX	X	XI	XII	I
Industry	B_TO_E36	1.5	-1.8	-0.3	1.6	2.9	1.1
Mining and quarrying	B	-0.9	0.5	-1.7	-25.7	33.6	-6.8
Of which:							
Mining of coal and lignite	B05	0.0	3.7	-7.5	-23.1	39.1	-9.9
Mining of metal ores	B07	3.4	-1.6	10.4	-27.7	43.9	-19.1
Other mining and quarrying	B08	-13.2	3.5	-2.0	0.3	-16.7	-1.8
Manufacturing	C	1.1	-2.2	0.5	1.2	-0.1	2.9
Of which:							
Manufacture of food products	C10	0.4	-4.6	1.7	-0.6	-0.7	2.2
Manufacture of beverages	C11	-2.8	2.9	2.5	-4.7	-8.2	19.8
Manufacture of tobacco products	C12	-13.1	10.9	-37.7	-6.2	47.7	3.3
Manufacture of textiles	C13	7.6	2.6	3.1	5.8	7.9	3.8
Manufacture of wearing apparel	C14	3.4	-4.6	-1.3	7.7	-0.8	3.4
Manufacture of leather and related products	C15	7.8	-12.0	-9.1	9.7	-9.9	7.7
Manufacture of wood and of products of wood and cork, except furniture; manufacture of articles of straw and plaiting materials	C16	-5.7	-4.0	5.6	0.7	-10.1	11.7
Manufacture of paper and paper products	C17	-6.2	0.5	-2.7	3.4	3.2	-1.8
Printing and reproduction of recorded media	C18	-3.6	1.3	-0.5	18.6	-7.0	-2.1
Manufacture of chemicals and chemical products	C20	4.2	1.3	-3.8	-1.2	-2.3	9.9
Manufacture of basic pharmaceutical products and pharmaceutical preparations	C21	-12.6	6.5	-5.8	-3.0	1.0	14.0
Manufacture of rubber and plastic products	C22	5.6	-2.1	-0.4	4.8	-13.3	21.2
Manufacture of other non-metallic mineral products	C23	1.2	-3.6	6.9	6.9	-11.2	10.1
Manufacture of basic metals	C24	-4.8	3.6	-2.6	3.6	-5.7	64.1
Manufacture of fabricated metal products, except machinery and equipment	C25	5.3	-5.9	11.7	-1.1	-0.6	7.0
Manufacture of computer, electronic and optical products	C26	1.5	5.9	-11.9	24.9	-19.3	5.8
Manufacture of electrical equipment	C27	-1.3	1.5	2.0	-0.2	9.0	-1.9
Manufacture of machinery and equipment n.e.c.	C28	6.2	-8.4	-0.4	2.7	1.8	5.3
Manufacture of motor vehicles, trailers and semi-trailers	C29	-1.2	10.8	-1.9	1.9	-13.8	17.9
Manufacture of other transport equipment	C30	-17.4	7.3	42.8	-31.7	22.3	27.7
Manufacture of furniture	C31	2.1	2.6	-2.7	0.8	0.3	9.8
Other manufacturing	C32	13.6	-0.3	-0.6	-11.3	-0.9	18.3
Repair and installation of machinery and equipment	C32	23.6	-27.0	32.6	11.4	-8.1	-8.7
Electricity, gas, steam and air conditioning supply	D	1.0	-7.2	-0.7	11.1	7.1	-0.8
Electricity, gas, steam and air conditioning supply	D35	1.0	-7.2	-0.7	11.1	7.1	-0.8



Table 2

Percentage changes of Industrial Production Indices compared
to the same month of the previous year
(Working day adjusted)

Economic Activities	NACE.BG -2008 Code	2012					2013
		VIII	IX	X	XI	XII	I
Industry	B_TO_E36	3.3	-1.6	-3.0	0.0	6.3	7.9
Mining and quarrying	B	5.4	2.9	-0.6	-17.0	-5.9	-5.6
Of which:							
Mining of coal and lignite	B05	-7.1	0.6	-9.4	-36.7	-1.3	-0.7
Mining of metal ores	B07	15.7	-5.6	3.3	25.9	-8.3	-6.2
Other mining and quarrying	B08	26.2	48.8	28.0	41.0	8.1	2.9
Manufacturing	C	2.3	-3.7	-2.5	0.8	2.3	5.6
Of which:							
Manufacture of food products	C10	2.6	-3.7	-3.8	-1.3	-0.9	2.3
Manufacture of beverages	C11	-0.1	-2.0	7.1	5.1	-8.2	22.2
Manufacture of tobacco products	C12	2.1	28.1	-11.2	-39.9	3.7	-6.7
Manufacture of textiles	C13	-28.2	-14.8	-4.0	0.8	12.4	22.3
Manufacture of wearing apparel	C14	-6.1	-13.5	-11.9	4.4	0.9	4.6
Manufacture of leather and related products	C15	-0.7	-20.4	-24.2	-9.7	-25.9	-11.5
Manufacture of wood and of products of wood and cork, except furniture; manufacture of articles of straw and plaiting materials	C16	-5.8	-8.9	0.5	4.7	-14.7	0.9
Manufacture of paper and paper products	C17	-6.4	-3.7	8.8	21.7	86.4	45.1
Printing and reproduction of recorded media	C18	-6.8	-5.5	-16.0	7.6	2.1	-0.3
Manufacture of chemicals and chemical products	C20	-12.7	-10.0	-10.2	-6.3	-15.3	-7.8
Manufacture of basic pharmaceutical products and pharmaceutical preparations	C21	8.6	20.1	3.2	-5.1	-6.2	29.1
Manufacture of rubber and plastic products	C22	4.3	0.3	2.6	20.2	1.6	15.7
Manufacture of other non-metallic mineral products	C23	0.3	-10.5	-2.0	15.1	-3.5	6.7
Manufacture of basic metals	C24	-21.9	1.6	-19.5	-8.2	-12.5	27.5
Manufacture of fabricated metal products, except machinery and equipment	C25	-4.7	-23.8	-20.8	-11.8	10.0	9.1
Manufacture of computer, electronic and optical products	C26	-6.3	8.8	-11.9	3.8	2.2	-22.0
Manufacture of electrical equipment	C27	13.7	22.3	23.1	12.4	31.6	27.5
Manufacture of machinery and equipment n.e.c.	C28	20.5	-0.2	0.8	2.6	15.9	7.9
Manufacture of motor vehicles, trailers and semi-trailers	C29	-12.0	14.8	-3.8	7.2	-5.8	21.3
Manufacture of other transport equipment	C30	13.5	-18.2	58.1	-34.2	47.3	9.7
Manufacture of furniture	C31	-1.6	4.6	-1.7	3.5	6.3	21.3
Other manufacturing	C32	17.3	30.1	32.4	23.9	22.8	3.6
Repair and installation of machinery and equipment	C33	19.5	-41.4	8.9	8.6	7.4	-2.8
Electricity, gas, steam and air conditioning supply	D	6.3	4.0	-4.4	6.1	17.0	18.4
Electricity, gas, steam and air conditioning supply	D35	6.3	4.0	-4.4	6.1	17.0	18.4



Table 3

Industrial Production Indices
(Seasonally adjusted, 2010=100)

NACE.BG - 2008 Code	2012												2013
	I	II	III	IV	V	VI	VII	VIII	IX	X	XI	XII	I
B_TO_E36	103.6	102.1	104.0	104.7	106.1	106.0	105.7	107.3	105.3	105.0	106.7	109.7	111.0
B	108.6	102.0	108.0	97.5	103.9	105.3	113.0	112.1	112.7	110.8	82.3	109.9	102.5
B05	105.2	107.6	117.8	104.0	116.0	92.3	113.1	113.1	117.3	108.5	83.5	116.1	104.6
B07	97.2	87.9	97.0	97.1	82.8	112.4	96.4	99.7	98.1	108.3	78.3	112.7	91.2
B08	98.4	85.2	98.1	103.8	100.3	120.2	140.4	121.8	126.1	123.6	124.0	103.3	101.5
C	103.6	101.1	105.0	106.7	107.3	106.8	105.1	106.3	103.9	104.5	105.8	105.6	108.7
C10	91.1	97.2	98.3	95.2	95.3	93.4	94.9	95.3	90.9	92.5	91.9	91.3	93.3
C11	88.7	92.6	101.5	99.2	101.1	102.2	100.0	97.2	100.0	102.5	97.6	89.6	107.3
C12	126.0	127.7	131.2	121.0	135.4	145.6	138.7	120.6	133.8	83.3	78.2	115.4	119.2
C13	88.2	85.1	87.1	88.8	85.4	82.1	79.1	85.1	87.3	90.0	95.2	102.8	106.7
C14	96.3	91.8	95.6	96.2	92.8	99.9	92.3	95.4	91.0	89.8	96.7	96.0	99.2
C15	89.7	84.3	86.0	80.9	91.7	96.4	86.5	93.2	82.0	74.5	81.8	73.7	79.4
C16	101.1	90.9	95.3	100.4	111.4	104.4	105.1	99.1	95.2	100.5	101.2	91.0	101.7
C17	74.5	85.6	106.5	110.8	110.3	105.5	112.7	105.7	106.2	103.3	106.8	110.2	108.2
C18	92.0	93.3	95.8	92.1	92.7	90.7	87.3	84.2	85.3	84.9	100.7	93.6	91.7
C20	113.4	106.5	113.3	91.8	113.4	107.5	97.1	101.2	102.5	98.6	97.4	95.2	104.6
C21	109.2	120.7	116.9	124.5	126.6	127.3	142.5	124.6	132.7	125.0	121.2	122.4	139.5
C22	100.4	92.7	97.8	104.5	107.5	108.1	102.0	107.7	105.5	105.0	110.1	95.4	115.7
C23	109.5	75.5	105.4	110.5	105.4	104.3	106.6	107.9	104.0	111.2	118.9	105.6	116.3
C24	106.5	101.4	95.4	102.0	98.9	99.2	96.3	91.7	95.0	92.6	95.9	90.4	148.4
C25	100.5	98.2	102.6	97.3	114.0	97.9	94.2	99.2	93.3	104.2	103.0	102.4	109.6
C26	142.5	127.0	124.5	133.2	136.8	141.3	110.1	111.7	118.3	104.2	130.2	105.1	111.2
C27	108.1	110.7	118.0	128.2	129.8	131.2	126.8	125.2	127.1	129.7	129.4	141.0	138.2
C28	122.4	123.5	129.2	127.2	131.4	128.3	123.4	131.1	120.1	119.6	122.9	125.1	131.7
C29	79.4	80.4	80.2	82.6	82.4	84.4	86.5	85.5	94.7	92.8	94.6	81.6	96.2
C30	114.8	110.1	120.1	117.2	88.5	139.9	90.2	74.5	80.0	114.2	77.9	95.3	121.7
C31	106.1	96.5	103.4	104.0	117.1	114.1	113.3	115.7	118.7	115.5	116.5	116.9	128.4
C32	137.7	101.2	119.8	126.7	133.5	123.3	121.8	138.4	138.0	137.1	121.6	120.5	142.5
C33	90.5	98.4	87.0	87.0	98.4	89.8	78.7	97.3	71.0	94.2	104.9	96.4	88.0
D	101.5	105.8	100.1	99.4	104.0	103.6	112.2	113.3	105.1	104.3	116.0	124.2	123.2
D35	101.5	105.8	100.1	99.4	104.0	103.6	112.2	113.3	105.1	104.3	116.0	124.2	123.2



Table 4

Industrial Production Indices
(Working day adjusted, 2010=100)

NACE.BG - 2008 Code	2010	2011	2012												2013
	I	I	I	II	III	IV	V	VI	VII	VIII	IX	X	XI	XII	I
B_TO_E36	88.4	97.8	95.7	93.8	106.8	102.0	103.8	109.6	110.8	106.4	104.6	107.6	110.7	113.7	103.3
B	90.7	103.2	101.3	95.7	106.3	93.1	97.7	101.0	112.7	109.7	116.5	124.3	89.4	117.9	95.6
B05	105.1	118.7	111.3	107.8	116.2	82.0	104.8	73.7	111.0	108.1	123.6	130.7	96.9	128.9	110.5
B07	82.7	95.5	97.2	87.9	97.0	97.1	82.8	112.4	96.4	99.7	98.1	108.3	78.3	112.7	91.2
B08	71.1	62.3	63.8	61.9	88.7	101.1	104.0	131.4	156.0	131.7	139.6	143.2	140.1	109.9	65.6
C	79.1	90.5	88.1	86.3	106.4	106.3	110.2	117.3	112.6	106.6	106.8	109.3	110.3	101.7	93.0
C10	80.5	84.8	76.2	84.0	97.2	91.7	92.6	95.9	96.2	98.9	98.5	101.8	97.9	95.6	77.9
C11	61.1	65.1	55.7	60.0	95.3	98.0	109.2	124.7	126.9	121.8	109.6	94.3	89.6	93.0	68.1
C12	60.2	81.1	95.6	94.9	122.3	106.2	145.0	173.2	160.2	122.9	139.7	98.5	86.2	111.4	89.2
C13	73.0	84.1	73.0	83.5	97.7	99.3	93.4	93.8	83.5	68.0	82.3	89.1	100.4	90.8	89.3
C14	95.9	100.4	96.5	88.9	95.1	88.1	83.7	108.3	106.9	95.3	88.0	87.3	96.2	97.5	101.0
C15	101.3	96.1	87.8	81.4	86.3	66.4	80.6	108.1	107.5	96.6	89.9	74.4	79.7	65.9	77.7
C16	65.5	86.5	76.4	69.5	90.1	96.6	110.5	114.5	116.9	103.2	105.5	114.4	111.5	86.6	77.1
C17	73.8	116.4	68.2	78.2	111.9	115.7	112.8	115.4	120.3	106.5	109.1	98.2	102.5	105.3	99.0
C18	88.1	82.2	76.7	81.9	91.1	87.0	87.1	94.0	86.7	84.8	89.1	93.4	112.7	107.6	76.4
C20	79.4	112.3	105.7	100.3	125.6	95.2	111.8	111.9	97.7	95.4	103.3	95.9	100.6	94.2	97.5
C21	88.7	78.8	87.4	120.2	121.4	122.7	122.3	146.2	133.0	121.2	134.9	136.3	126.4	120.1	112.8
C22	75.5	87.5	81.6	76.1	97.8	101.4	105.8	118.0	112.0	112.2	113.0	117.8	118.7	86.7	94.4
C23	55.8	72.5	76.5	60.7	103.0	114.9	112.7	116.8	116.9	112.6	113.7	126.1	129.3	88.6	81.6
C24	87.3	98.4	108.9	100.1	86.1	123.1	100.7	99.5	113.2	80.6	89.4	97.5	109.8	68.3	138.8
C25	58.8	82.9	72.9	87.4	105.8	97.6	112.4	105.0	97.3	98.4	95.2	104.8	108.8	120.7	79.6
C26	80.4	100.9	121.4	108.8	128.5	130.3	133.2	150.0	108.8	101.0	125.4	104.9	136.9	129.9	94.8
C27	95.1	97.2	95.1	100.5	118.7	128.6	126.3	143.4	136.5	110.5	131.2	140.9	140.5	136.3	121.3
C28	73.8	93.1	103.6	117.2	138.2	125.6	130.5	143.8	132.4	122.2	120.9	123.7	126.9	119.2	111.8
C29	88.9	101.4	74.1	74.3	82.9	84.8	84.5	89.8	85.9	74.8	95.8	99.1	105.4	75.6	89.9
C30	50.4	66.2	70.8	86.7	132.7	107.9	122.1	173.5	93.4	69.1	77.5	99.9	67.5	102.1	77.6
C31	74.7	91.1	88.2	83.0	103.7	99.6	114.2	120.9	117.6	116.9	122.4	126.3	125.9	123.8	107.0
C32	73.9	97.0	111.9	86.8	117.7	122.8	134.0	140.0	121.7	141.4	149.3	160.3	128.7	109.5	115.9
C33	62.3	70.9	62.0	82.9	86.7	79.6	92.0	93.8	78.7	97.2	73.6	98.6	116.9	133.0	60.2
D	116.4	120.2	119.8	118.4	110.3	91.5	86.8	89.3	104.3	103.9	92.1	98.3	124.6	149.7	141.8
D35	116.4	120.2	119.8	118.4	110.3	91.5	86.8	89.3	104.3	103.9	92.1	98.3	124.6	149.7	141.8