

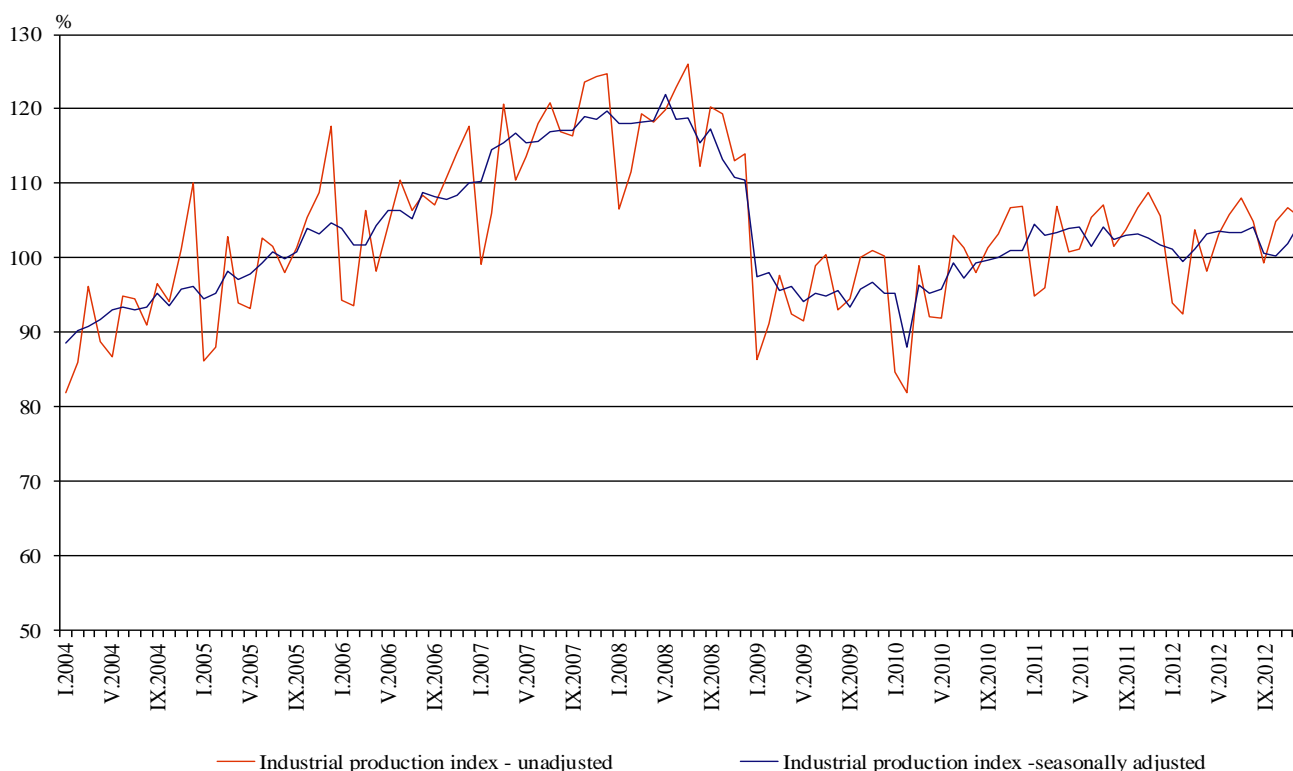


INDUSTRIAL PRODUCTION INDICES IN DECEMBER 2012¹

The preliminary data showed that the Industrial Production Index², seasonally adjusted³, increased by 2.4% in December 2012 as compared to November 2012.

In December 2012 working day adjusted⁴ Industrial Production Index rose by 4.1% in comparison with the same month of 2011.

Figure 1. Industrial Production Indices (2005=100)



¹ December 2012 data are preliminary.

² Monthly Industrial Production and Industrial turnover indices measure changes in production and turnover values of industrial enterprises. This information can be used to assess the current economic development and for short-term forecasts. Indices do not measure the actual production level, it aims to measure the average change in value of production between two points of time. Indices are compiled on the base of information collected through representative sampling survey on industrial enterprises. The sample covers enterprises with annual turnover more than 97% of total turnover in industry. Industrial production indices are calculated at constant base year (2005) that is to say they are weighted with the structure of the value added at factor costs in the base year.

³ Seasonal adjustment is a statistical method, which eliminates the seasonal component of time series and it is particularly suitable for long-term comparisons and analysis of the data.

⁴ Working day adjustment is an adjustment for variations caused by calendar effects, different number of calendar and working days in the months, national holidays and outliers (for example the presence of more non-working days in May could contribute to the decline in the production in some activities).

The seasonally and working day adjusted data on Industrial production index by months, starting from January 2000 can be found in NSI internet web-site: (<http://www.nsi.bg/otrasalen.php?otr=46>).

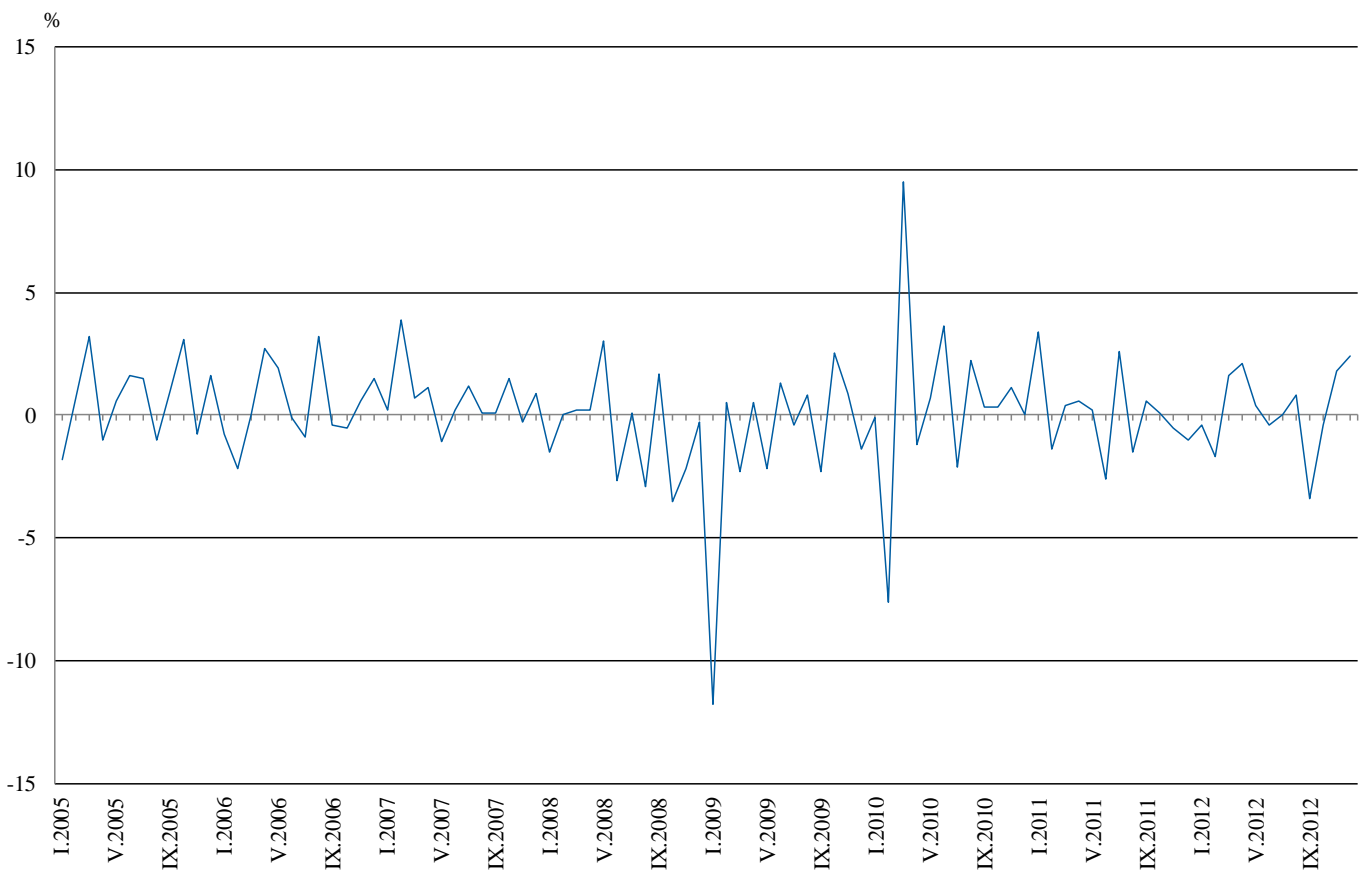


Monthly comparisons

In December 2012 as compared to November 2012, the seasonally adjusted Industrial Production Index in the mining and quarrying industry increased by 21.9% and in the electricity, gas, steam and air conditioning supply by 9.6%, while in the manufacturing a decrease by 0.2% was seen.

The most significant decreases of production in the manufacturing were seen in the manufacture of basic metals by 15.6%, in the manufacture of rubber and plastic products by 15.0%, in the manufacture of beverages by 12.0%, in the manufacture of wood and of products of wood and cork, except furniture; manufacture of articles of straw and plaiting materials by 10.9%, in the manufacture of chemicals and chemical products by 9.1%. There was increase in the manufacture of tobacco products by 36.6%, in the manufacture of textiles by 14.4%, in the manufacture of paper and paper products by 8.2%, in the manufacture of electrical equipment by 5.2%.

Figure 2. Percentage changes of Industrial Production Indices compared to the previous month (Seasonally adjusted)



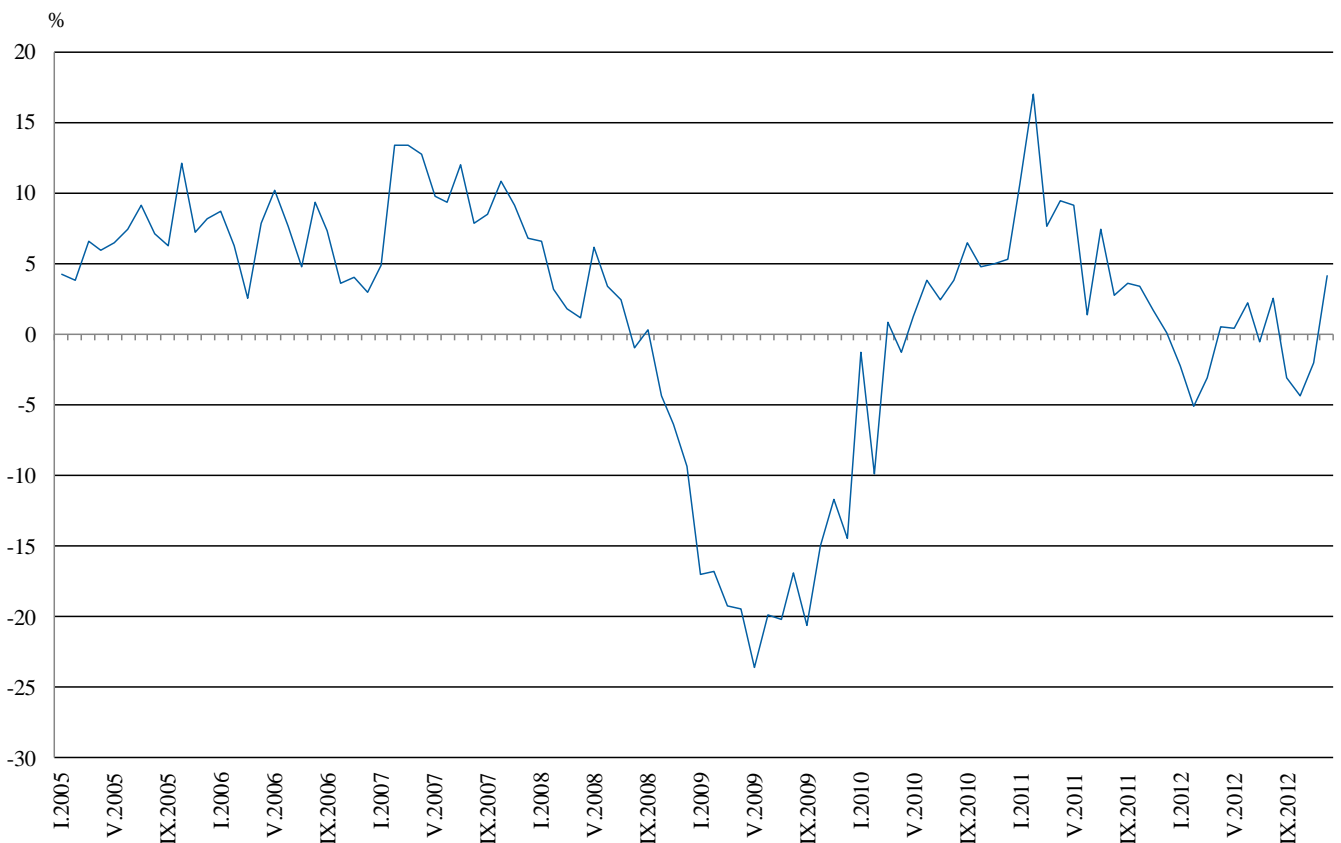


Annual comparisons

On annual basis in December 2012 Industrial Production Index, calculated from working day adjusted data increased in the electricity, gas, steam and air conditioning supply by 9.2% and in the manufacturing by 2.3%, while in the mining and quarrying industry a decrease by 7.4% was seen.

In the manufacturing, the more significant increases compared to the same month of the previous year were seen in the manufacture of paper and paper products by 89.2%, in the manufacture of other transport equipment by 39.1%, in the manufacture of electrical equipment by 23.7%, in the manufacture of textiles by 15.6%, in the manufacture of fabricated metal products, except machinery and equipment by 13.6%. Decreases were registered in the manufacture of basic metals by 20.0%, in the manufacture of chemicals and chemical products by 15.5%, in the manufacture of basic pharmaceutical products and pharmaceutical preparations by 11.5%.

Figure 3. Percentage changes of Industrial Production Indices compared to the same month of the previous year (Working day adjusted)



The final data on Industrial Production and Turnover Indices for November 2012 can be found in NSI website: (<http://www.nsi.bg/otrasalen.php?otr=46>).

Percentage changes of Industrial Production Indices compared to the previous month¹

Economic Activities	NACE.BG - 2008 Code	2012					
		VII	VIII	IX	X	XI	XII
Industry	B_TO_E36	0.0	0.8	-3.4	-0.4	1.8	2.4
Mining and quarrying	B	7.5	-0.6	0.2	-1.8	-19.0	21.9
of which:							
Mining of coal and lignite	B05	21.7	0.4	3.7	-9.7	-21.3	37.5
Mining of metal ores	B07	-9.2	3.0	-0.8	9.6	-27.5	35.4
Other mining and quarrying	B08	20.7	-13.0	3.4	-2.5	-1.7	-15.2
Manufacturing	C	-1.3	0.4	-2.5	0.5	0.6	-0.2
of which:							
Manufacture of food products	C10	3.9	-1.8	-4.2	1.2	-0.6	0.4
Manufacture of beverages	C11	-1.6	-2.9	3.0	2.7	-7.9	-12.0
Manufacture of tobacco products	C12	-5.5	-12.8	8.2	-22.1	-11.4	36.6
Manufacture of textiles	C13	-3.4	6.6	3.1	3.2	2.4	14.4
Manufacture of wearing apparel	C14	-7.2	2.4	-5.7	0.0	7.2	-1.7
Manufacture of leather and related products	C15	-9.8	8.9	-14.8	-10.3	9.6	-8.5
Manufacture of wood and of products of wood and cork, except furniture; manufacture of articles of straw and plaiting materials	C16	0.0	-5.7	-4.2	6.8	-2.6	-10.9
Manufacture of paper and paper products	C17	6.7	-6.8	0.2	-3.2	-0.2	8.2
Printing and reproduction of recorded media	C18	-3.6	-4.3	1.5	-0.1	11.9	-4.0
Manufacture of chemicals and chemical products	C20	-9.7	4.3	0.9	-3.5	4.7	-9.1
Manufacture of basic pharmaceutical products and pharmaceutical preparations	C21	11.8	-11.9	5.7	-6.0	-3.9	-3.3
Manufacture of rubber and plastic products	C22	-4.0	6.5	-2.7	-0.1	2.8	-15.0
Manufacture of other non-metallic mineral products	C23	3.4	-0.6	-3.6	7.9	2.0	-10.1
Manufacture of basic metals	C24	1.7	-12.9	9.0	-5.9	10.3	-15.6
Manufacture of fabricated metal products, except machinery and equipment	C25	-3.5	4.7	-5.4	12.5	-2.8	2.3
Manufacture of computer, electronic and optical products	C26	-22.8	5.0	1.9	-11.6	6.6	-25.9
Manufacture of electrical equipment	C27	-4.1	-1.8	1.7	1.2	-0.1	5.2
Manufacture of machinery and equipment n.e.c.	C28	-3.1	5.2	-8.6	-1.2	0.9	1.3
Manufacture of motor vehicles, trailers and semi-trailers	C29	2.3	1.0	10.1	0.1	-2.6	-14.2
Manufacture of other transport equipment	C30	-37.4	-18.6	8.0	42.7	-25.6	8.9
Manufacture of furniture	C31	-0.6	2.1	2.4	-2.6	0.5	-1.4
Other manufacturing	C32	-0.7	13.4	-0.3	-0.1	-17.9	-1.1
Repair and installation of machinery and equipment	C32	-10.8	21.7	-26.7	35.5	5.6	-6.0
Electricity, gas, steam and air conditioning supply	D	8.3	1.1	-11.5	-0.7	8.0	9.6
Electricity, gas, steam and air conditioning supply	D35	8.3	1.1	-11.5	-0.7	8.0	9.6

¹ Seasonally adjusted.



Table 2

Percentage changes of Industrial Production Indices compared to the same month of the previous year¹

Economic Activities	NACE.BG -2008 Code	2012					
		VII	VIII	IX	X	XI	XII
Industry	B_TO_E36	-0.5	2.6	-3.1	-4.4	-2.0	4.1
Mining and quarrying	B	1.5	4.5	1.7	0.0	-11.3	-7.4
of which:							
Mining of coal and lignite	B05	-1.1	-6.1	-3.3	-9.4	-35.6	-4.0
Mining of metal ores	B07	-8.2	13.1	-4.5	1.8	26.0	-12.3
Other mining and quarrying	B08	46.7	27.0	48.7	27.3	41.2	10.6
Manufacturing	C	-0.7	2.4	-3.5	-2.3	-0.2	2.3
of which:							
Manufacture of food products	C10	2.4	2.9	-3.7	-3.2	-1.0	0.6
Manufacture of beverages	C11	0.8	-0.8	-0.1	6.7	4.7	-8.9
Manufacture of tobacco products	C12	32.8	2.4	29.9	-11.4	-38.9	9.4
Manufacture of textiles	C13	-25.6	-29.1	-14.1	-2.8	-7.9	15.6
Manufacture of wearing apparel	C14	-12.0	-6.4	-11.8	-12.0	3.3	2.0
Manufacture of leather and related products	C15	-12.0	-4.2	-17.1	-25.2	-11.1	-17.8
Manufacture of wood and of products of wood and cork, except furniture; manufacture of articles of straw and plaiting materials	C16	0.0	-5.0	-7.3	1.1	4.7	-15.2
Manufacture of paper and paper products	C17	-5.5	-5.5	-3.7	7.4	18.3	89.2
Printing and reproduction of recorded media	C18	-11.0	-9.3	-6.8	-16.9	-2.4	1.6
Manufacture of chemicals and chemical products	C20	-14.4	-13.6	-11.4	-9.9	-0.1	-15.5
Manufacture of basic pharmaceutical products and pharmaceutical preparations	C21	36.7	7.6	21.9	3.1	-5.0	-11.5
Manufacture of rubber and plastic products	C22	-2.8	5.9	0.2	5.5	20.0	-2.8
Manufacture of other non-metallic mineral products	C23	-0.5	0.2	-11.2	-2.8	11.1	-3.7
Manufacture of basic metals	C24	-8.6	-22.7	-1.8	-19.7	-10.0	-20.0
Manufacture of fabricated metal products, except machinery and equipment	C25	-19.2	-5.2	-20.5	-20.8	-13.1	13.6
Manufacture of computer, electronic and optical products	C26	-19.6	-0.7	7.1	-9.5	-12.0	-23.2
Manufacture of electrical equipment	C27	14.6	13.2	24.9	23.1	9.9	23.7
Manufacture of machinery and equipment n.e.c.	C28	5.0	21.1	0.2	1.1	0.4	11.3
Manufacture of motor vehicles, trailers and semi-trailers	C29	0.7	-1.5	34.4	12.8	15.5	10.6
Manufacture of other transport equipment	C30	2.1	14.3	-26.8	56.7	-22.3	39.1
Manufacture of furniture	C31	-1.3	-3.0	4.3	-1.6	3.3	4.5
Other manufacturing	C32	-2.3	17.1	32.6	33.9	14.0	15.0
Repair and installation of machinery and equipment	C33	8.7	17.7	-41.1	10.6	3.7	4.8
Electricity, gas, steam and air conditioning supply	D	-1.8	4.3	-4.5	-11.7	-4.8	9.2
Electricity, gas, steam and air conditioning supply	D35	-1.8	4.3	-4.5	-11.7	-4.8	9.2

¹ Working day adjusted.



Table 3

Industrial Production Indices
(Seasonally adjusted, 2005=100)

NACE.BG - 2008 Code	2011	2012											
	XII	I	II	III	IV	V	VI	VII	VIII	IX	X	XI	XII
B_TO_E36	101.7	101.3	99.6	101.2	103.3	103.7	103.3	103.3	104.1	100.6	100.2	102.0	104.4
B	90.0	82.2	77.8	81.7	76.2	78.3	79.6	85.6	85.1	85.3	83.8	67.9	82.8
B05	121.2	104.8	108.4	116.3	111.4	110.7	91.8	111.7	112.1	116.2	104.9	82.6	113.6
B07	87.4	73.0	65.6	72.5	73.4	58.6	79.6	72.3	74.5	73.9	81.0	58.7	79.5
B08	62.0	60.2	52.7	63.0	66.3	65.4	78.9	95.2	82.8	85.6	83.5	82.1	69.6
C	98.3	100.2	97.4	101.9	103.9	104.7	103.8	102.5	102.9	100.3	100.8	101.4	101.2
C10	106.7	106.9	114.4	114.7	111.1	111.6	109.3	113.6	111.5	106.8	108.1	107.5	107.9
C11	76.8	78.7	80.6	89.0	87.2	91.7	89.8	88.4	85.8	88.4	90.8	83.6	73.6
C12	105.8	114.6	120.2	125.9	117.4	132.5	141.3	133.5	116.4	126.0	98.2	87.0	118.8
C13	62.7	60.6	58.3	59.1	59.4	55.8	53.2	51.4	54.8	56.5	58.3	59.7	68.3
C14	64.0	66.1	63.0	66.1	65.9	64.6	68.3	63.4	64.9	61.2	61.2	65.6	64.5
C15	69.9	69.9	64.1	65.6	62.1	72.8	77.5	69.9	76.1	64.8	58.1	63.7	58.3
C16	87.9	82.0	73.4	78.0	82.2	92.5	87.6	87.6	82.6	79.1	84.5	82.3	73.3
C17	71.9	87.9	105.7	132.6	138.6	137.6	131.4	140.2	130.7	131.0	126.8	126.6	137.0
C18	100.3	103.6	104.6	107.1	102.1	103.2	100.3	96.7	92.5	93.9	93.8	105.0	100.8
C20	105.6	108.1	103.7	107.8	87.7	107.5	102.0	92.1	96.1	97.0	93.6	98.0	89.1
C21	107.2	97.0	103.4	100.7	107.1	109.3	110.9	124.0	109.2	115.4	108.5	104.3	100.9
C22	103.4	113.0	100.5	107.7	112.7	118.9	117.7	113.0	120.4	117.2	117.1	120.4	102.4
C23	83.9	88.0	60.5	84.7	87.9	85.1	83.3	86.1	85.6	82.5	89.0	90.8	81.6
C24	97.2	111.6	101.1	73.7	113.5	96.0	97.8	99.5	86.7	94.5	88.9	98.1	82.8
C25	89.1	99.3	95.9	100.7	94.9	111.0	94.7	91.4	95.7	90.5	101.8	98.9	101.2
C26	110.6	149.7	134.0	131.5	140.7	145.8	150.9	116.5	122.3	124.6	110.1	117.4	87.0
C27	153.9	150.7	154.8	168.9	185.2	188.1	188.9	181.2	178.0	181.0	183.1	182.9	192.5
C28	116.1	131.9	133.5	139.9	137.4	142.8	138.7	134.4	141.4	129.2	127.6	128.7	130.4
C29	127.5	127.4	144.3	142.0	146.3	146.7	149.0	152.5	154.0	169.6	169.7	165.3	141.9
C30	54.1	98.7	88.9	98.9	95.7	75.5	117.6	73.6	59.9	64.7	92.3	68.7	74.8
C31	109.2	105.3	94.1	101.1	102.1	114.7	111.9	111.2	113.5	116.2	113.2	113.8	112.2
C32	131.6	187.8	135.8	163.0	171.3	182.8	167.0	165.8	188.0	187.4	187.3	153.8	152.1
C33	102.9	102.4	111.9	98.5	98.4	109.9	100.2	89.4	108.8	79.8	108.1	114.1	107.3
D	116.2	114.7	116.6	105.4	111.7	113.4	111.1	120.3	121.6	107.6	106.8	115.3	126.4
D35	116.2	114.7	116.6	105.4	111.7	113.4	111.1	120.3	121.6	107.6	106.8	115.3	126.4



Table 4

Industrial Production Indices
(Working day adjusted, 2005=100)

NACE.BG - 2008 Code	2009	2010	2011	2012											
	XII	XII	XII	I	II	III	IV	V	VI	VII	VIII	IX	X	XI	XII
B_TO_E36	98.6	103.8	103.9	93.2	91.5	103.1	100.6	101.4	106.4	108.3	103.7	100.6	103.7	106.1	108.2
B	75.9	77.8	96.0	76.9	72.7	80.4	74.0	74.0	76.3	85.2	83.1	87.9	94.1	72.7	88.9
B05	89.6	107.3	131.2	108.8	106.4	113.5	92.1	101.8	72.2	108.5	105.4	121.1	127.6	94.6	126.0
B07	75.4	70.9	90.6	73.0	65.6	72.5	73.4	61.6	84.4	72.3	74.5	73.9	81.0	58.7	79.5
B08	77.2	70.8	67.0	42.2	39.6	58.9	66.0	69.4	86.6	103.0	87.5	92.2	94.7	91.9	74.1
C	92.2	98.6	95.7	85.1	83.4	103.2	102.8	107.0	113.5	109.6	103.5	103.5	106.1	106.0	97.9
C10	121.1	121.7	112.3	89.3	98.7	113.3	106.8	108.4	112.1	115.2	115.7	115.7	118.9	114.5	113.0
C11	100.3	97.4	87.2	49.0	52.6	83.8	85.5	98.5	108.9	111.0	107.4	95.4	83.0	78.6	79.4
C12	92.6	98.9	103.7	91.8	89.9	118.1	102.7	139.6	167.1	154.3	118.4	135.2	95.2	83.6	113.4
C13	56.2	53.2	53.3	48.4	55.7	65.1	66.3	61.9	62.3	55.5	45.1	54.7	59.5	62.1	61.6
C14	72.3	70.7	64.5	65.6	60.3	65.3	60.6	57.5	74.4	73.5	65.9	60.4	60.3	66.0	65.8
C15	69.2	69.7	65.2	68.6	63.6	67.3	51.6	63.0	84.2	83.8	75.3	69.9	58.1	62.2	53.6
C16	71.2	78.0	83.4	62.9	56.8	74.5	78.6	91.2	94.2	96.2	85.4	86.4	94.6	91.9	70.7
C17	83.1	129.1	69.5	80.7	96.2	138.1	143.0	139.0	142.5	148.5	131.4	134.7	121.2	120.5	131.5
C18	124.3	121.1	113.3	85.2	91.3	101.1	96.8	96.6	104.5	96.4	94.2	99.0	103.6	115.3	115.1
C20	87.2	90.4	104.3	100.3	97.1	119.0	90.0	105.8	105.9	92.5	90.4	97.6	90.9	101.7	88.1
C21	87.3	84.9	110.0	75.6	103.6	105.1	105.8	106.0	126.4	115.0	105.0	116.4	118.2	109.9	97.4
C22	99.9	107.8	97.9	90.6	83.9	108.7	109.4	115.7	127.9	124.0	124.8	124.8	131.2	131.2	95.2
C23	67.7	72.1	72.4	60.5	48.3	82.4	91.0	91.5	93.4	95.1	90.3	90.7	100.9	98.3	69.7
C24	79.2	80.5	76.1	105.8	97.0	83.6	119.4	99.5	96.5	109.8	78.5	86.5	94.8	105.6	60.9
C25	91.9	108.0	105.6	70.9	84.9	103.5	94.9	108.9	101.4	94.4	95.3	92.5	102.5	104.4	120.0
C26	133.2	146.1	138.1	128.0	114.7	135.4	137.2	139.5	158.0	114.6	110.0	131.9	110.7	122.7	106.1
C27	134.8	132.8	147.4	136.1	142.8	170.1	185.0	180.5	205.8	195.7	158.2	188.4	201.7	199.4	182.4
C28	95.5	108.9	112.1	111.3	126.4	149.1	134.3	141.0	154.5	142.9	131.5	130.2	132.7	133.0	124.8
C29	123.2	150.8	120.1	114.7	133.6	150.0	151.8	152.3	161.1	150.9	135.2	171.1	177.4	183.1	132.8
C30	93.1	99.1	59.4	57.7	70.3	108.4	88.1	100.4	141.5	76.3	56.6	63.2	81.8	63.3	82.6
C31	91.3	103.5	114.1	86.8	81.2	102.0	97.8	112.2	118.7	115.5	114.9	120.1	124.2	123.7	119.2
C32	100.1	133.9	121.7	151.8	117.1	160.3	165.9	182.8	190.0	165.2	192.5	202.3	218.3	162.8	139.9
C33	114.2	169.8	140.7	70.2	93.9	98.1	89.4	103.8	105.9	88.8	109.8	83.2	113.6	126.2	147.5
D	132.6	135.2	140.9	131.7	129.7	114.7	103.8	95.0	95.2	113.2	112.8	92.8	100.1	123.1	153.8
D35	132.6	135.2	140.9	131.7	129.7	114.7	103.8	95.0	95.2	113.2	112.8	92.8	100.1	123.1	153.8