

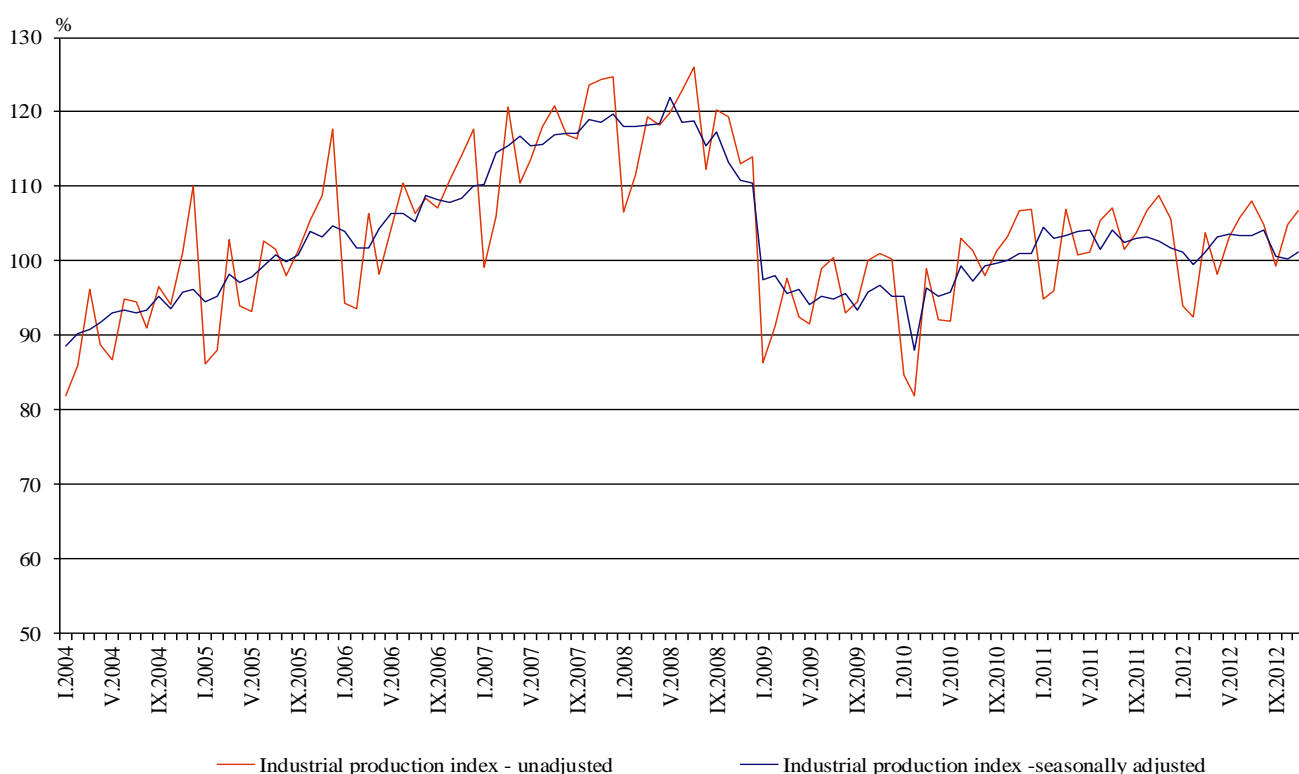


INDUSTRIAL PRODUCTION INDICES IN NOVEMBER 2012¹

The preliminary data showed that the Industrial Production Index², seasonally adjusted³, increased by 0.9% in November 2012 as compared to October 2012.

In November 2012 working day adjusted⁴ Industrial Production Index fell by 2.1% in comparison with the same month of 2011.

Figure 1. Industrial Production Indices (2005=100)



¹ November 2012 data are preliminary.

² Monthly Industrial Production and Industrial turnover indices measure changes in production and turnover values of industrial enterprises. This information can be used to assess the current economic development and for short-term forecasts. Indices do not measure the actual production level, it aims to measure the average change in value of production between two points of time. Indices are compiled on the base of information collected through representative sampling survey on industrial enterprises. The sample covers enterprises with annual turnover more than 97% of total turnover in industry. Industrial production indices are calculated at constant base year (2005) that is to say they are weighted with the structure of the value added at factor costs in the base year.

³ Seasonal adjustment is a statistical method, which eliminates the seasonal component of time series and it is particularly suitable for long-term comparisons and analysis of the data.

⁴ Working day adjustment is an adjustment for variations caused by calendar effects, different number of calendar and working days in the months, national holidays and outliers (for example the presence of more non-working days in May could contribute to the decline in the production in some activities).

The seasonally and working day adjusted data on Industrial production index by months, starting from January 2000 can be found in NSI internet web-site: (<http://www.nsi.bg/otrasalen.php?otr=46>).

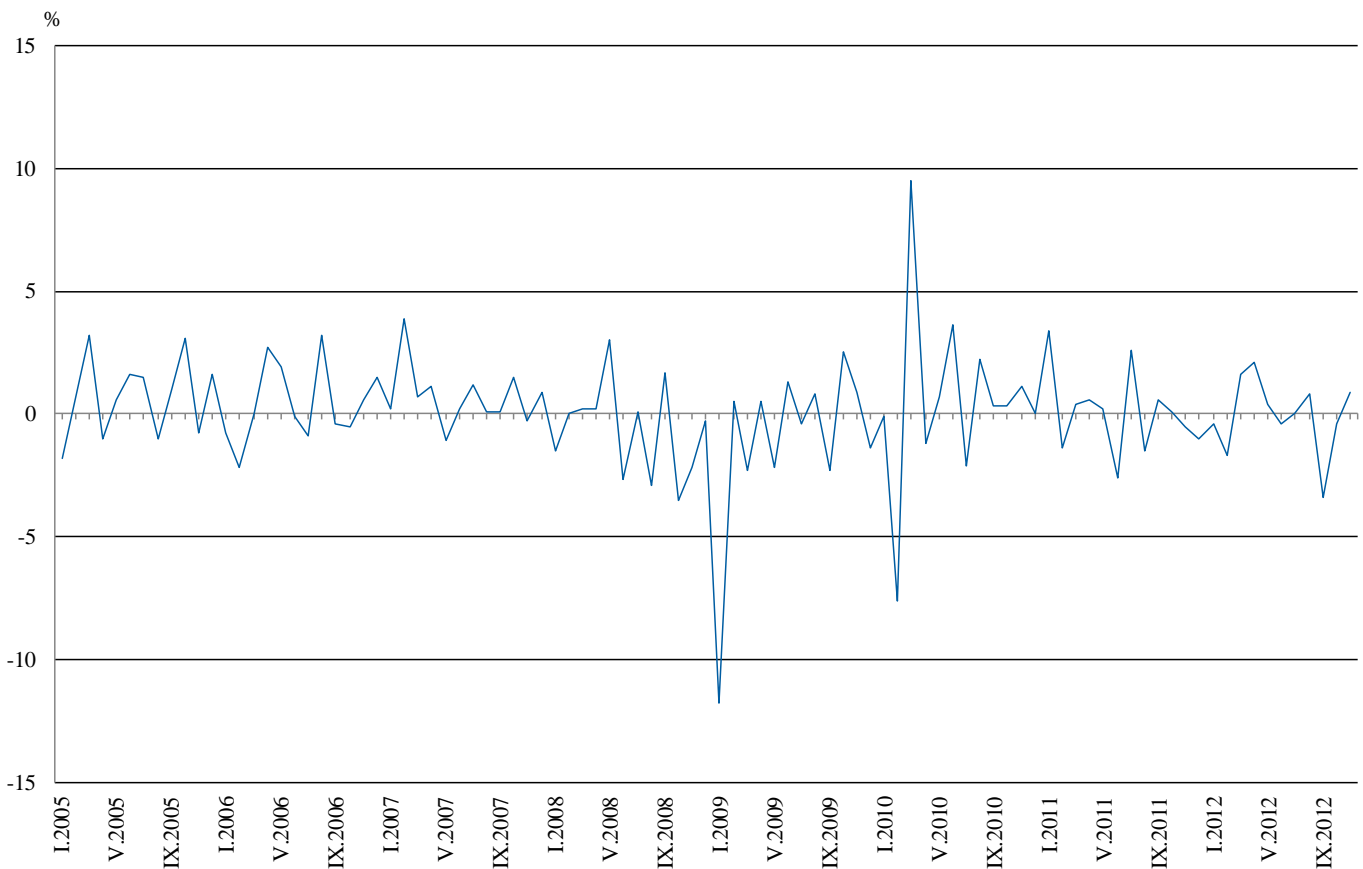


Monthly comparisons

In November 2012 as compared to October 2012, the seasonally adjusted Industrial Production Index in the electricity, gas, steam and air conditioning supply increased by 7.4% and in the manufacturing by 0.6%, while in the mining and quarrying industry a decrease by 19.2% was seen.

The most significant increases of production in the manufacturing were seen in the manufacture of basic metals by 11.7%, in the manufacture of leather and related products by 10.8%, in the printing and reproduction of recorded media by 7.7%, in the manufacture of wearing apparel by 7.0%, in the manufacture of chemicals and chemical products by 5.0%. There was decrease in the manufacture of other transport equipment by 25.5%, in the manufacture of tobacco products by 12.7%, in the manufacture of beverages by 5.2%, in the manufacture of basic pharmaceutical products and pharmaceutical preparations by 2.9%.

Figure 2. Percentage changes of Industrial Production Indices compared to the previous month
(Seasonally adjusted)





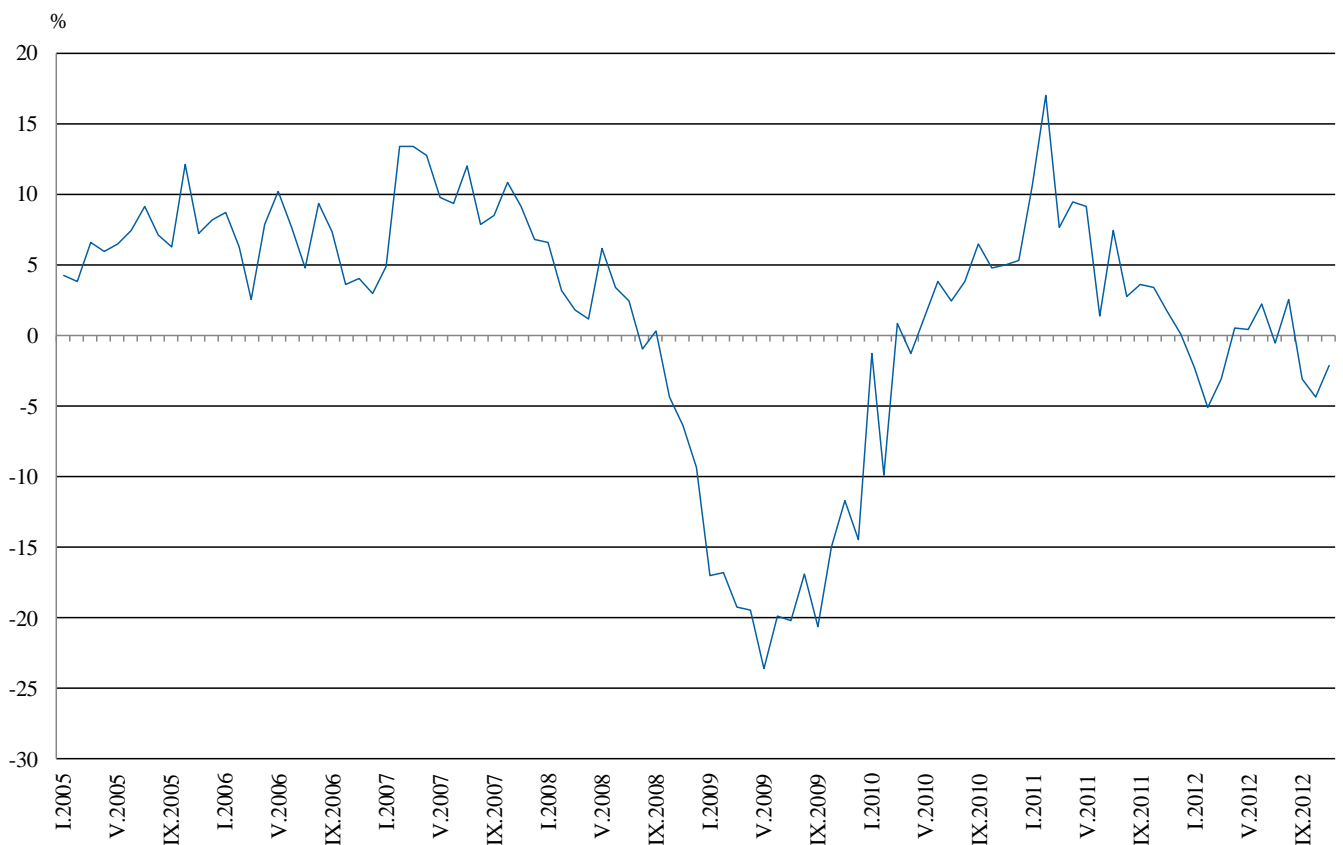
Annual comparisons

On annual bases in November 2012 Industrial Production Index, calculated from working day adjusted data decreased in the mining and quarrying industry by 11.6%, in the electricity, gas, steam and air conditioning supply by 4.8% and in the manufacturing by 0.2%.

In the manufacturing, the more significant decreases compared to the same month of the previous year were seen in the manufacture of tobacco products by 38.9%, in the manufacture of other transport equipment by 22.3%, in the manufacture of fabricated metal products, except machinery and equipment by 12.9%, in the manufacture of leather and related products by 10.9%, in the manufacture of textiles by 8.6%. Increases were registered, in the manufacture of rubber and plastic products by 19.8%, in the manufacture of paper and paper products by 16.8%, in the manufacture of electrical equipment by 9.9%.

Figure 3. Percentage changes of Industrial Production Indices compared to the same month of the previous year

(Working day adjusted)



The final data on Industrial Production and Turnover Indices for October 2012 can be found in NSI internet web-site: (<http://www.nsi.bg/otrasalen.php?otr=46>).

Percentage changes of Industrial Production Indices compared to the previous month¹

Economic Activities	NACE.BG - 2008 Code	2012					
		VI	VII	VIII	IX	X	XI
Industry	B_TO_E36	-0.4	0.0	0.8	-3.4	-0.4	0.9
Mining and quarrying	B	1.7	7.5	-0.6	0.2	-1.8	-19.2
of which:							
Mining of coal and lignite	B05	-17.1	21.7	0.4	3.7	-9.7	-22.5
Mining of metal ores	B07	35.8	-9.2	3.0	-0.8	9.6	-27.7
Other mining and quarrying	B08	20.6	20.7	-13.0	3.4	-2.5	-1.8
Manufacturing	C	-0.9	-1.3	0.4	-2.5	0.5	0.6
of which:							
Manufacture of food products	C10	-2.1	3.9	-1.8	-4.2	1.2	-0.6
Manufacture of beverages	C11	-2.1	-1.6	-2.9	3.0	2.7	-5.2
Manufacture of tobacco products	C12	6.6	-5.5	-12.8	8.2	-22.1	-12.7
Manufacture of textiles	C13	-4.7	-3.4	6.6	3.1	3.2	-0.7
Manufacture of wearing apparel	C14	5.7	-7.2	2.4	-5.7	0.0	7.0
Manufacture of leather and related products	C15	6.5	-9.8	8.9	-14.8	-10.3	10.8
Manufacture of wood and of products of wood and cork, except furniture; manufacture of articles of straw and plaiting materials	C16	-5.3	0.0	-5.7	-4.2	6.8	-1.7
Manufacture of paper and paper products	C17	-4.5	6.7	-6.8	0.2	-3.2	-1.7
Printing and reproduction of recorded media	C18	-2.8	-3.6	-4.3	1.5	-0.1	7.7
Manufacture of chemicals and chemical products	C20	-5.1	-9.7	4.3	0.9	-3.5	5.0
Manufacture of basic pharmaceutical products and pharmaceutical preparations	C21	1.5	11.8	-11.9	5.7	-6.0	-2.9
Manufacture of rubber and plastic products	C22	-1.0	-4.0	6.5	-2.7	-0.1	3.7
Manufacture of other non-metallic mineral products	C23	-2.1	3.4	-0.6	-3.6	7.9	3.1
Manufacture of basic metals	C24	1.9	1.7	-12.9	9.0	-5.9	11.7
Manufacture of fabricated metal products, except machinery and equipment	C25	-14.7	-3.5	4.7	-5.4	12.5	-2.7
Manufacture of computer, electronic and optical products	C26	3.5	-22.8	5.0	1.9	-11.6	7.9
Manufacture of electrical equipment	C27	0.4	-4.1	-1.8	1.7	1.2	-0.8
Manufacture of machinery and equipment n.e.c.	C28	-2.9	-3.1	5.2	-8.6	-1.2	0.7
Manufacture of motor vehicles, trailers and semi-trailers	C29	1.6	2.3	1.0	10.1	0.1	-1.2
Manufacture of other transport equipment	C30	55.8	-37.4	-18.6	8.0	42.7	-25.5
Manufacture of furniture	C31	-2.4	-0.6	2.1	2.4	-2.6	0.9
Other manufacturing	C32	-8.6	-0.7	13.4	-0.3	-0.1	-17.7
Repair and installation of machinery and equipment	C32	-8.8	-10.8	21.7	-26.7	35.5	5.1
Electricity, gas, steam and air conditioning supply	D	-2.0	8.3	1.1	-11.5	-0.7	7.4
Electricity, gas, steam and air conditioning supply	D35	-2.0	8.3	1.1	-11.5	-0.7	7.4

¹ Seasonally adjusted.



Table 2

Percentage changes of Industrial Production Indices compared to the same month of the previous year ¹

Economic Activities	NACE.BG -2008 Code	2012					
		VI	VII	VIII	IX	X	XI
Industry	B_TO_E36	2.2	-0.5	2.6	-3.1	-4.4	-2.1
Mining and quarrying	B	4.5	1.5	4.5	1.7	0.0	-11.6
of which:							
Mining of coal and lignite	B05	-31.2	-1.1	-6.1	-3.3	-9.4	-35.7
Mining of metal ores	B07	44.8	-8.2	13.1	-4.5	1.8	25.8
Other mining and quarrying	B08	27.0	46.7	27.0	48.7	27.3	39.8
Manufacturing	C	4.5	-0.7	2.4	-3.5	-2.3	-0.2
of which:							
Manufacture of food products	C10	2.4	2.4	2.9	-3.7	-3.2	-1.0
Manufacture of beverages	C11	9.0	0.8	-0.8	-0.1	6.7	6.1
Manufacture of tobacco products	C12	35.9	32.8	2.4	29.9	-11.4	-38.9
Manufacture of textiles	C13	-27.6	-25.6	-29.1	-14.1	-2.8	-8.6
Manufacture of wearing apparel	C14	4.1	-12.0	-6.4	-11.8	-12.0	3.3
Manufacture of leather and related products	C15	5.8	-12.0	-4.2	-17.1	-25.2	-10.9
Manufacture of wood and of products of wood and cork, except furniture; manufacture of articles of straw and plaiting materials	C16	3.3	0.0	-5.0	-7.3	1.1	4.9
Manufacture of paper and paper products	C17	-14.2	-5.5	-5.5	-3.7	7.4	16.8
Printing and reproduction of recorded media	C18	-3.5	-11.0	-9.3	-6.8	-16.9	-6.4
Manufacture of chemicals and chemical products	C20	-6.0	-14.4	-13.6	-11.4	-9.9	0.1
Manufacture of basic pharmaceutical products and pharmaceutical preparations	C21	15.4	36.7	7.6	21.9	3.1	-5.0
Manufacture of rubber and plastic products	C22	4.1	-2.8	5.9	0.2	5.5	19.8
Manufacture of other non-metallic mineral products	C23	-6.5	-0.5	0.2	-11.2	-2.8	11.4
Manufacture of basic metals	C24	-11.1	-8.6	-22.7	-1.8	-19.7	-9.9
Manufacture of fabricated metal products, except machinery and equipment	C25	-13.0	-19.2	-5.2	-20.5	-20.8	-12.9
Manufacture of computer, electronic and optical products	C26	17.6	-19.6	-0.7	7.1	-9.5	-11.6
Manufacture of electrical equipment	C27	29.6	14.6	13.2	24.9	23.1	9.9
Manufacture of machinery and equipment n.e.c.	C28	13.9	5.0	21.1	0.2	1.1	0.2
Manufacture of motor vehicles, trailers and semi-trailers	C29	7.9	0.7	-1.5	34.4	12.8	16.1
Manufacture of other transport equipment	C30	73.6	2.1	14.3	-26.8	56.7	-22.3
Manufacture of furniture	C31	7.5	-1.3	-3.0	4.3	-1.6	3.7
Other manufacturing	C32	2.2	-2.3	17.1	32.6	33.9	13.9
Repair and installation of machinery and equipment	C33	12.9	8.7	17.7	-41.1	10.6	3.3
Electricity, gas, steam and air conditioning supply	D	-5.3	-1.8	4.3	-4.5	-11.7	-4.8
Electricity, gas, steam and air conditioning supply	D35	-5.3	-1.8	4.3	-4.5	-11.7	-4.8

¹ Working day adjusted.



Table 3

Industrial Production Indices
(Seasonally adjusted, 2005=100)

NACE.BG - 2008 Code	2011		2012										
	XI	XII	I	II	III	IV	V	VI	VII	VIII	IX	X	XI
B_TO_E36	102.7	101.7	101.3	99.6	101.2	103.3	103.7	103.3	103.3	104.1	100.6	100.2	101.1
B	75.8	90.0	82.2	77.8	81.7	76.2	78.3	79.6	85.6	85.1	85.3	83.8	67.7
B05	123.0	121.2	104.8	108.4	116.3	111.4	110.7	91.8	111.7	112.1	116.2	104.9	81.3
B07	46.1	87.4	73.0	65.6	72.5	73.4	58.6	79.6	72.3	74.5	73.9	81.0	58.6
B08	59.3	62.0	60.2	52.7	63.0	66.3	65.4	78.9	95.2	82.8	85.6	83.5	82.0
C	101.0	98.3	100.2	97.4	101.9	103.9	104.7	103.8	102.5	102.9	100.3	100.8	101.4
C10	108.2	106.7	106.9	114.4	114.7	111.1	111.6	109.3	113.6	111.5	106.8	108.1	107.5
C11	79.0	76.8	78.7	80.6	89.0	87.2	91.7	89.8	88.4	85.8	88.4	90.8	86.1
C12	113.4	105.8	114.6	120.2	125.9	117.4	132.5	141.3	133.5	116.4	126.0	98.2	85.7
C13	63.9	62.7	60.6	58.3	59.1	59.4	55.8	53.2	51.4	54.8	56.5	58.3	57.9
C14	63.8	64.0	66.1	63.0	66.1	65.9	64.6	68.3	63.4	64.9	61.2	61.2	65.5
C15	71.5	69.9	69.9	64.1	65.6	62.1	72.8	77.5	69.9	76.1	64.8	58.1	64.4
C16	82.1	87.9	82.0	73.4	78.0	82.2	92.5	87.6	87.6	82.6	79.1	84.5	83.1
C17	103.8	71.9	87.9	105.7	132.6	138.6	137.6	131.4	140.2	130.7	131.0	126.8	124.6
C18	109.1	100.3	103.6	104.6	107.1	102.1	103.2	100.3	96.7	92.5	93.9	93.8	101.0
C20	98.5	105.6	108.1	103.7	107.8	87.7	107.5	102.0	92.1	96.1	97.0	93.6	98.3
C21	105.0	107.2	97.0	103.4	100.7	107.1	109.3	110.9	124.0	109.2	115.4	108.5	105.4
C22	102.9	103.4	113.0	100.5	107.7	112.7	118.9	117.7	113.0	120.4	117.2	117.1	121.4
C23	84.0	83.9	88.0	60.5	84.7	87.9	85.1	83.3	86.1	85.6	82.5	89.0	91.8
C24	113.6	97.2	111.6	101.1	73.7	113.5	96.0	97.8	99.5	86.7	94.5	88.9	99.3
C25	114.2	89.1	99.3	95.9	100.7	94.9	111.0	94.7	91.4	95.7	90.5	101.8	99.1
C26	133.9	110.6	149.7	134.0	131.5	140.7	145.8	150.9	116.5	122.3	124.6	110.1	118.8
C27	158.1	153.9	150.7	154.8	168.9	185.2	188.1	188.9	181.2	178.0	181.0	183.1	181.7
C28	124.7	116.1	131.9	133.5	139.9	137.4	142.8	138.7	134.4	141.4	129.2	127.6	128.5
C29	143.5	127.5	127.4	144.3	142.0	146.3	146.7	149.0	152.5	154.0	169.6	169.7	167.7
C30	86.6	54.1	98.7	88.9	98.9	95.7	75.5	117.6	73.6	59.9	64.7	92.3	68.8
C31	109.9	109.2	105.3	94.1	101.1	102.1	114.7	111.9	111.2	113.5	116.2	113.2	114.2
C32	133.8	131.6	187.8	135.8	163.0	171.3	182.8	167.0	165.8	188.0	187.4	187.3	154.2
C33	112.4	102.9	102.4	111.9	98.5	98.4	109.9	100.2	89.4	108.8	79.8	108.1	113.6
D	120.9	116.2	114.7	116.6	105.4	111.7	113.4	111.1	120.3	121.6	107.6	106.8	114.7
D35	120.9	116.2	114.7	116.6	105.4	111.7	113.4	111.1	120.3	121.6	107.6	106.8	114.7



Table 4

Industrial Production Indices
(Working day adjusted, 2005=100)

NACE.BG - 2008 Code	2009	2010	2011		2012										
	XI	XI	XI	XII	I	II	III	IV	V	VI	VII	VIII	IX	X	XI
B_TO_E36	101.4	106.5	108.3	103.9	93.2	91.5	103.1	100.6	101.4	106.4	108.3	103.7	100.6	103.7	106.0
B	88.0	88.4	82.0	96.0	76.9	72.7	80.4	74.0	74.0	76.3	85.2	83.1	87.9	94.1	72.5
B05	117.4	124.2	146.8	131.2	108.8	106.4	113.5	92.1	101.8	72.2	108.5	105.4	121.1	127.6	94.4
B07	86.8	81.9	46.6	90.6	73.0	65.6	72.5	73.4	61.6	84.4	72.3	74.5	73.9	81.0	58.6
B08	81.5	73.6	65.1	67.0	42.2	39.6	58.9	66.0	69.4	86.6	103.0	87.5	92.2	94.7	91.0
C	97.4	107.3	106.2	95.7	85.1	83.4	103.2	102.8	107.0	113.5	109.6	103.5	103.5	106.1	106.0
C10	116.1	128.0	115.7	112.3	89.3	98.7	113.3	106.8	108.4	112.1	115.2	115.7	115.7	118.9	114.5
C11	89.4	87.4	75.1	87.2	49.0	52.6	83.8	85.5	98.5	108.9	111.0	107.4	95.4	83.0	79.7
C12	136.3	112.6	136.9	103.7	91.8	89.9	118.1	102.7	139.6	167.1	154.3	118.4	135.2	95.2	83.7
C13	69.5	69.7	67.4	53.3	48.4	55.7	65.1	66.3	61.9	62.3	55.5	45.1	54.7	59.5	61.6
C14	71.1	73.1	63.9	64.5	65.6	60.3	65.3	60.6	57.5	74.4	73.5	65.9	60.4	60.3	66.0
C15	76.3	77.9	70.0	65.2	68.6	63.6	67.3	51.6	63.0	84.2	83.8	75.3	69.9	58.1	62.4
C16	85.4	92.9	87.8	83.4	62.9	56.8	74.5	78.6	91.2	94.2	96.2	85.4	86.4	94.6	92.1
C17	80.0	134.7	101.9	69.5	80.7	96.2	138.1	143.0	139.0	142.5	148.5	131.4	134.7	121.2	119.0
C18	129.7	118.5	118.1	113.3	85.2	91.3	101.1	96.8	96.6	104.5	96.4	94.2	99.0	103.6	110.5
C20	85.6	123.5	101.8	104.3	100.3	97.1	119.0	90.0	105.8	105.9	92.5	90.4	97.6	90.9	101.9
C21	89.0	91.0	115.7	110.0	75.6	103.6	105.1	105.8	106.0	126.4	115.0	105.0	116.4	118.2	109.9
C22	115.5	127.7	109.3	97.9	90.6	83.9	108.7	109.4	115.7	127.9	124.0	124.8	124.8	131.2	130.9
C23	85.7	93.3	88.5	72.4	60.5	48.3	82.4	91.0	91.5	93.4	95.1	90.3	90.7	100.9	98.6
C24	109.1	93.0	117.3	76.1	105.8	97.0	83.6	119.4	99.5	96.5	109.8	78.5	86.5	94.8	105.7
C25	87.0	116.6	120.2	105.6	70.9	84.9	103.5	94.9	108.9	101.4	94.4	95.3	92.5	102.5	104.7
C26	109.8	113.5	139.4	138.1	128.0	114.7	135.4	137.2	139.5	158.0	114.6	110.0	131.9	110.7	123.2
C27	156.1	157.7	181.5	147.4	136.1	142.8	170.1	185.0	180.5	205.8	195.7	158.2	188.4	201.7	199.5
C28	100.7	121.4	132.5	112.1	111.3	126.4	149.1	134.3	141.0	154.5	142.9	131.5	130.2	132.7	132.7
C29	128.2	163.7	158.5	120.1	114.7	133.6	150.0	151.8	152.3	161.1	150.9	135.2	171.1	177.4	184.0
C30	88.3	51.0	81.5	59.4	57.7	70.3	108.4	88.1	100.4	141.5	76.3	56.6	63.2	81.8	63.3
C31	93.9	120.5	119.7	114.1	86.8	81.2	102.0	97.8	112.2	118.7	115.5	114.9	120.1	124.2	124.1
C32	145.4	180.8	142.8	121.7	151.8	117.1	160.3	165.9	182.8	190.0	165.2	192.5	202.3	218.3	162.7
C33	101.4	111.4	121.7	140.7	70.2	93.9	98.1	89.4	103.8	105.9	88.8	109.8	83.2	113.6	125.7
D	120.6	113.0	129.3	140.9	131.7	129.7	114.7	103.8	95.0	95.2	113.2	112.8	92.8	100.1	123.1
D35	120.6	113.0	129.3	140.9	131.7	129.7	114.7	103.8	95.0	95.2	113.2	112.8	92.8	100.1	123.1