

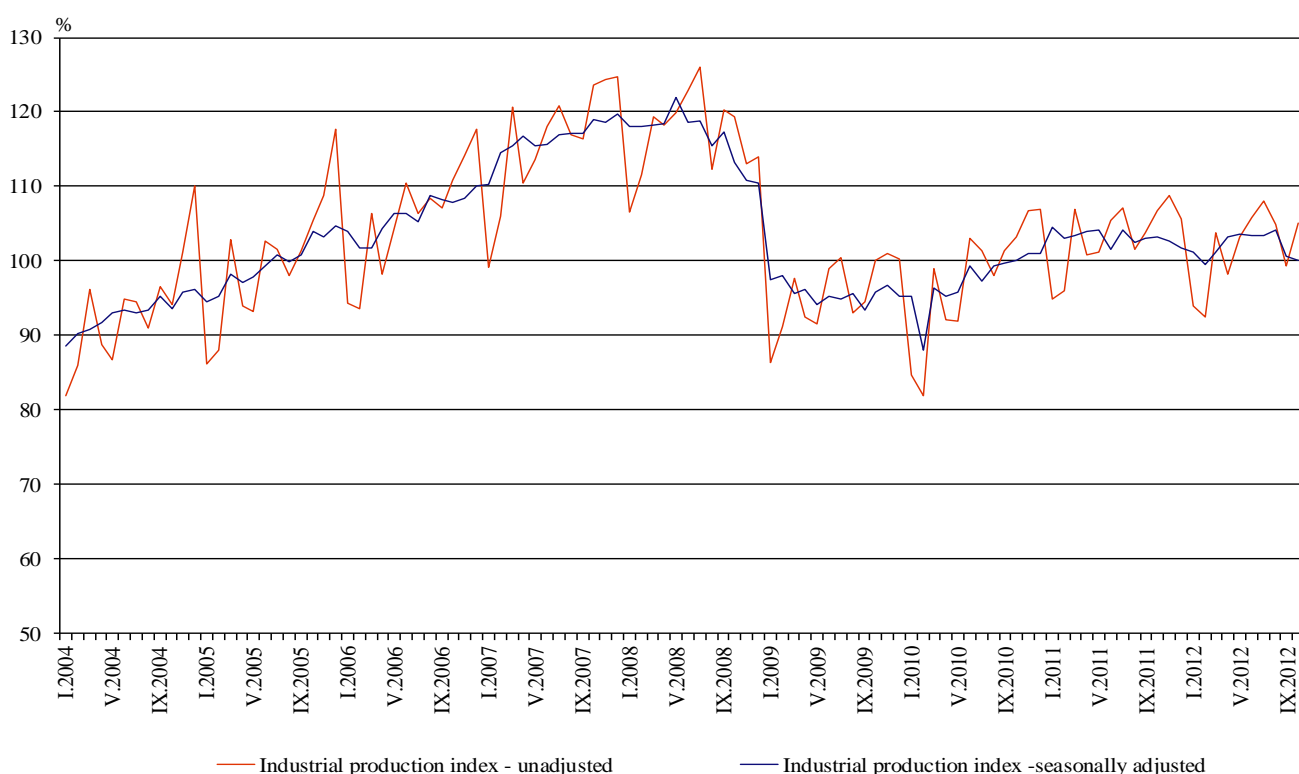


INDUSTRIAL PRODUCTION INDICES IN OCTOBER 2012¹

The preliminary data showed that the Industrial Production Index², seasonally adjusted³, decreased by 0.4% in October 2012 as compared to September 2012.

In October 2012 working day adjusted⁴ Industrial Production Index fell by 4.1% in comparison with the same month of 2011.

Figure 1. Industrial Production Indices (2005=100)



¹ October 2012 data are preliminary.

² Monthly Industrial Production and Industrial turnover indices measure changes in production and turnover values of industrial enterprises. This information can be used to assess the current economic development and for short-term forecasts. Indices do not measure the actual production level, it aims to measure the average change in value of production between two points of time. Indices are compiled on the basis of information collected through representative sampling survey on industrial enterprises. The sample covers enterprises with annual turnover more than 97% of total turnover in industry. Industrial production indices are calculated at constant base year (2005) that is to say they are weighted with the structure of the value added at factor costs in the base year.

³ Seasonal adjustment is a statistical method, which eliminates the seasonal component of time series and it is particularly suitable for long-term comparisons and analysis of the data.

⁴ Working day adjustment is an adjustment for variations caused by calendar effects, different number of calendar and working days in the months, national holidays and outliers (for example the presence of more non-working days in May could contribute to the decline in the production in some activities).

The seasonally and working day adjusted data on Industrial production index by months, starting from January 2000 can be found in NSI internet web-site: (<http://www.nsi.bg/otrasalen.php?otr=46>).

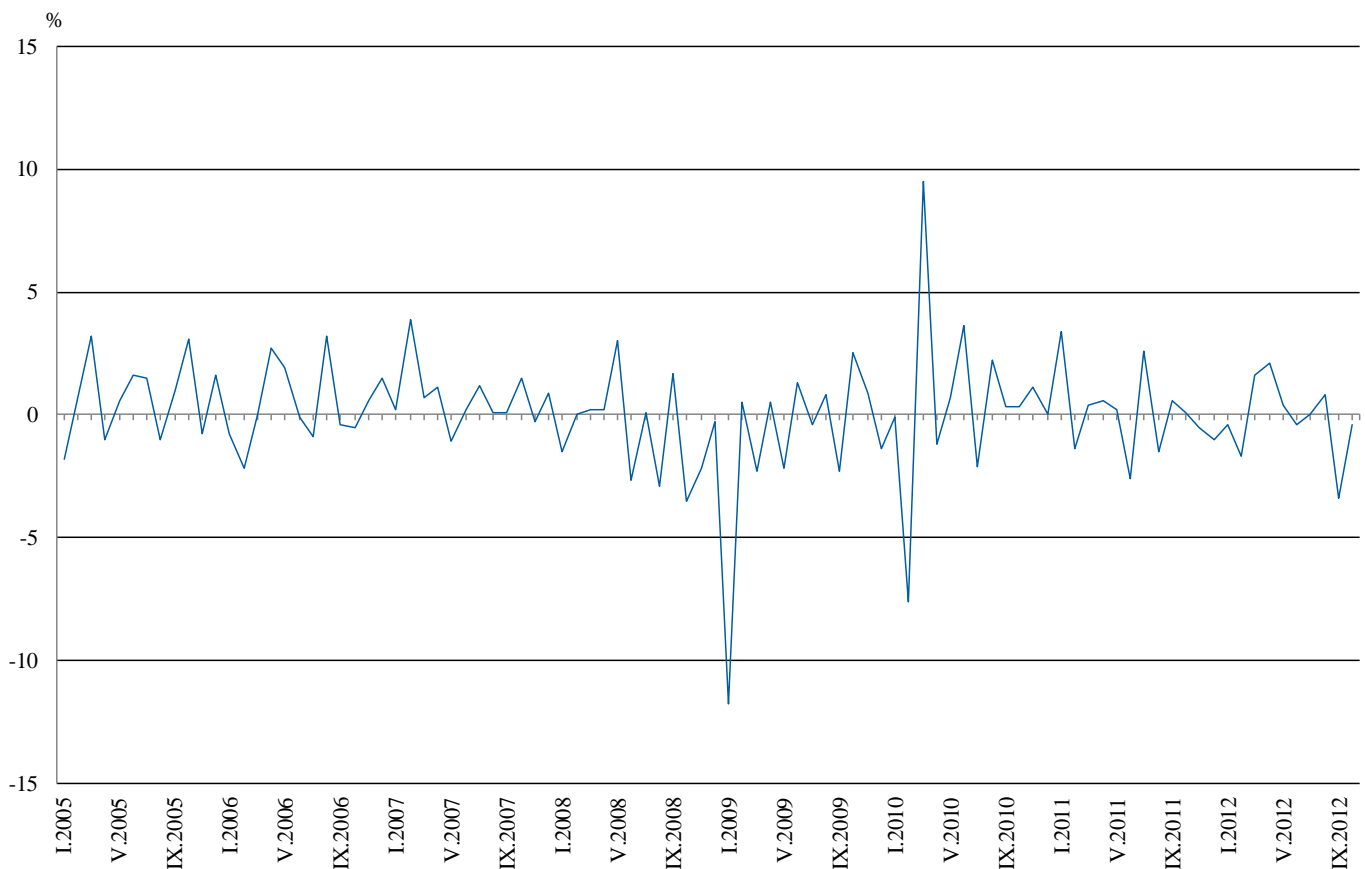


Monthly comparisons

In October 2012 as compared to September 2012, the seasonally adjusted Industrial Production Index in the electricity, gas, steam and air conditioning supply decreased by 1.0%, while increases were seen in the manufacturing by 0.6% and in the mining and quarrying industry by 0.4%.

The most significant increases of production in the manufacturing were seen in the manufacture of other transport equipment by 43.6%, in the repair and installation of machinery and equipment by 34.5%, in the manufacture of fabricated metal products, except machinery and equipment by 11.7%, in the manufacture of wood and of products of wood and cork, except furniture; manufacture of articles of straw and plaiting materials by 7.3%, in the manufacture of other non-metallic mineral products by 6.4%. There was decrease in the manufacture of tobacco products by 19.8%, in the manufacture of leather and related products by 10.3%, in the manufacture of chemicals and chemical products by 7.7%, in the manufacture of basic metals by 6.7%, in the manufacture of basic pharmaceutical products and pharmaceutical preparations by 5.2%.

Figure 2. Percentage changes of Industrial Production Indices compared to the previous month
(seasonally adjusted)



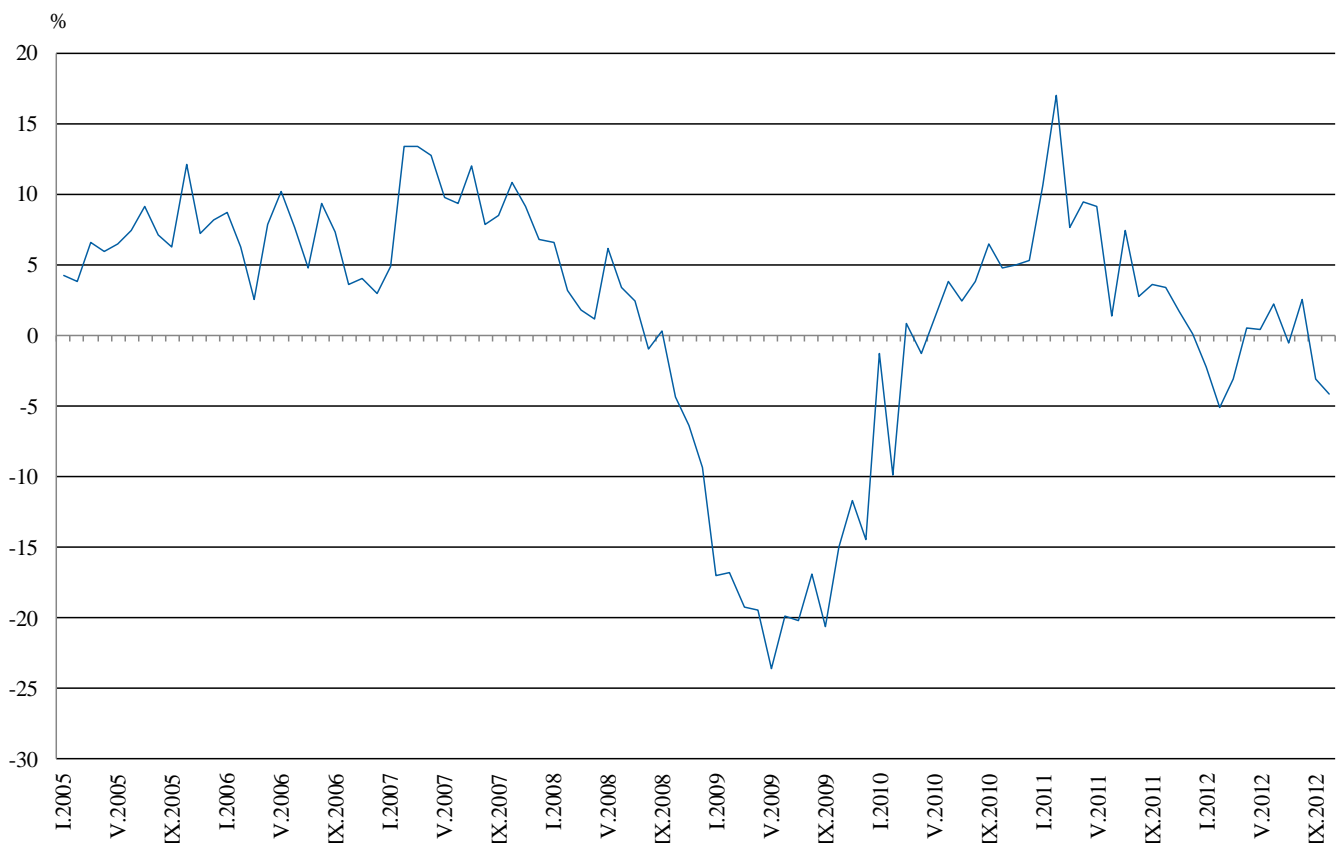


Annual comparisons

On annual bases in October 2012 Industrial Production Index, calculated from working day adjusted data in the electricity, gas, steam and air conditioning supply decreased by 11.9% and in the manufacturing by 2.1%, while in the mining and quarrying industry an increase by 1.9% was seen.

In the manufacturing, the more significant decreases compared to the same month of the previous year were seen in the manufacture of leather and related products by 25.4%, in the manufacture of fabricated metal products, except machinery and equipment by 21.3%, in the manufacture of basic metals by 19.6%, in the printing and reproduction of recorded media by 16.2%. Increases were registered in the manufacture of other transport equipment by 56.7%, in the manufacture of electrical equipment by 23.6%, in the repair and installation of machinery and equipment by 10.3%.

Figure 3. Percentage changes of Industrial Production Indices compared to the same month of the previous year
(working day adjusted)



The final data on Industrial Production and Turnover Indices for September 2012 can be found in NSI internet web-site: (<http://www.nsi.bg/otrasalen.php?otr=46>).

Percentage changes of Industrial Production Indices compared to the previous month¹

Economic Activities	NACE.BG - 2008 Code	2012					
		V	VI	VII	VIII	IX	X
Industry	B_TO_E36	0.4	-0.4	0.0	0.8	-3.4	-0.4
Mining and quarrying	B	2.8	1.7	7.5	-0.6	0.2	0.4
of which:							
Mining of coal and lignite	B05	-0.6	-17.1	21.7	0.4	3.7	-7.7
Mining of metal ores	B07	-20.2	35.8	-9.2	3.0	-0.8	9.5
Other mining and quarrying	B08	-1.4	20.6	20.7	-13.0	3.4	8.6
Manufacturing	C	0.8	-0.9	-1.3	0.4	-2.5	0.6
of which:		0.0	0.0	0.0	0.0	0.0	0.0
Manufacture of food products	C10	0.5	-2.1	3.9	-1.8	-4.2	1.3
Manufacture of beverages	C11	5.2	-2.1	-1.6	-2.9	3.0	3.7
Manufacture of tobacco products	C12	12.9	6.6	-5.5	-12.8	8.2	-19.8
Manufacture of textiles	C13	-6.1	-4.7	-3.4	6.6	3.1	2.8
Manufacture of wearing apparel	C14	-2.0	5.7	-7.2	2.4	-5.7	-1.0
Manufacture of leather and related products	C15	17.2	6.5	-9.8	8.9	-14.8	-10.3
Manufacture of wood and of products of wood and cork, except furniture; manufacture of articles of straw and plaiting materials	C16	12.5	-5.3	0.0	-5.7	-4.2	7.3
Manufacture of paper and paper products	C17	-0.7	-4.5	6.7	-6.8	0.2	-2.8
Printing and reproduction of recorded media	C18	1.1	-2.8	-3.6	-4.3	1.5	0.4
Manufacture of chemicals and chemical products	C20	22.6	-5.1	-9.7	4.3	0.9	-7.7
Manufacture of basic pharmaceutical products and pharmaceutical preparations	C21	2.1	1.5	11.8	-11.9	5.7	-5.2
Manufacture of rubber and plastic products	C22	5.5	-1.0	-4.0	6.5	-2.7	-0.3
Manufacture of other non-metallic mineral products	C23	-3.2	-2.1	3.4	-0.6	-3.6	6.4
Manufacture of basic metals	C24	-15.4	1.9	1.7	-12.9	9.0	-6.7
Manufacture of fabricated metal products, except machinery and equipment	C25	17.0	-14.7	-3.5	4.7	-5.4	11.7
Manufacture of computer, electronic and optical products	C26	3.6	3.5	-22.8	5.0	1.9	-11.0
Manufacture of electrical equipment	C27	1.6	0.4	-4.1	-1.8	1.7	1.8
Manufacture of machinery and equipment n.e.c.	C28	3.9	-2.9	-3.1	5.2	-8.6	2.1
Manufacture of motor vehicles, trailers and semi-trailers	C29	0.3	1.6	2.3	1.0	10.1	-0.2
Manufacture of other transport equipment	C30	-21.1	55.8	-37.4	-18.6	8.0	43.6
Manufacture of furniture	C31	12.3	-2.4	-0.6	2.1	2.4	-2.8
Other manufacturing	C32	6.7	-8.6	-0.7	13.4	-0.3	1.3
Repair and installation of machinery and equipment	C32	11.7	-8.8	-10.8	21.7	-26.7	34.5
Electricity, gas, steam and air conditioning supply	D	1.5	-2.0	8.3	1.1	-11.5	-1.0
Electricity, gas, steam and air conditioning supply	D35	1.5	-2.0	8.3	1.1	-11.5	-1.0

¹ Seasonally adjusted



Table 2

Percentage changes of Industrial Production Indices compared to the same month of the previous year ¹

Economic Activities	NACE.BG -2008 Code	2012					
		V	VI	VII	VIII	IX	X
Industry	B_TO_E36	0.4	2.2	-0.5	2.6	-3.1	-4.1
Mining and quarrying	B	-13.1	4.5	1.5	4.5	1.7	1.9
of which:							
Mining of coal and lignite	B05	-19.6	-31.2	-1.1	-6.1	-3.3	-9.4
Mining of metal ores	B07	-8.1	44.8	-8.2	13.1	-4.5	1.6
Other mining and quarrying	B08	-4.7	27.0	46.7	27.0	48.7	43.7
Manufacturing	C	4.6	4.5	-0.7	2.4	-3.5	-2.1
of which:							
Manufacture of food products	C10	2.7	2.4	2.4	2.9	-3.7	-3.1
Manufacture of beverages	C11	3.8	9.0	0.8	-0.8	-0.1	7.3
Manufacture of tobacco products	C12	36.6	35.9	32.8	2.4	29.9	-11.4
Manufacture of textiles	C13	-23.8	-27.6	-25.6	-29.1	-14.1	-2.8
Manufacture of wearing apparel	C14	-10.7	4.1	-12.0	-6.4	-11.8	-11.2
Manufacture of leather and related products	C15	-9.0	5.8	-12.0	-4.2	-17.1	-25.4
Manufacture of wood and of products of wood and cork, except furniture; manufacture of articles of straw and plaiting materials	C16	18.0	3.3	0.0	-5.0	-7.3	1.5
Manufacture of paper and paper products	C17	-14.0	-14.2	-5.5	-5.5	-3.7	7.4
Printing and reproduction of recorded media	C18	-3.0	-3.5	-11.0	-9.3	-6.8	-16.2
Manufacture of chemicals and chemical products	C20	-6.6	-6.0	-14.4	-13.6	-11.4	-14.1
Manufacture of basic pharmaceutical products and pharmaceutical preparations	C21	16.7	15.4	36.7	7.6	21.9	3.1
Manufacture of rubber and plastic products	C22	0.0	4.1	-2.8	5.9	0.2	5.4
Manufacture of other non-metallic mineral products	C23	-1.4	-6.5	-0.5	0.2	-11.2	-3.9
Manufacture of basic metals	C24	-16.6	-11.1	-8.6	-22.7	-1.8	-19.6
Manufacture of fabricated metal products, except machinery and equipment	C25	1.3	-13.0	-19.2	-5.2	-20.5	-21.3
Manufacture of computer, electronic and optical products	C26	13.2	17.6	-19.6	-0.7	7.1	-8.7
Manufacture of electrical equipment	C27	28.9	29.6	14.6	13.2	24.9	23.6
Manufacture of machinery and equipment n.e.c.	C28	14.4	13.9	5.0	21.1	0.2	5.0
Manufacture of motor vehicles, trailers and semi-trailers	C29	-2.2	7.9	0.7	-1.5	34.4	12.6
Manufacture of other transport equipment	C30	-41.4	73.6	2.1	14.3	-26.8	56.7
Manufacture of furniture	C31	6.9	7.5	-1.3	-3.0	4.3	-1.9
Other manufacturing	C32	11.0	2.2	-2.3	17.1	32.6	35.4
Repair and installation of machinery and equipment	C33	18.8	12.9	8.7	17.7	-41.1	10.3
Electricity, gas, steam and air conditioning supply	D	-7.1	-5.3	-1.8	4.3	-4.5	-11.9
Electricity, gas, steam and air conditioning supply	D35	-7.1	-5.3	-1.8	4.3	-4.5	-11.9

¹ Working day adjusted

Industrial Production Indices
(seasonally adjusted, 2005=100)

NACE.BG - 2008 Code	2011			2012									
	X	XI	XII	I	II	III	IV	V	VI	VII	VIII	IX	X
B_TO_E36	103.2	102.7	101.7	101.3	99.6	101.2	103.3	103.7	103.3	103.3	104.1	100.6	100.2
B	84.2	75.8	90.0	82.2	77.8	81.7	76.2	78.3	79.6	85.6	85.1	85.3	85.6
B05	116.6	123.0	121.2	104.8	108.4	116.3	111.4	110.7	91.8	111.7	112.1	116.2	107.3
B07	76.4	46.1	87.4	73.0	65.6	72.5	73.4	58.6	79.6	72.3	74.5	73.9	80.9
B08	65.7	59.3	62.0	60.2	52.7	63.0	66.3	65.4	78.9	95.2	82.8	85.6	93.0
C	101.8	101.0	98.3	100.2	97.4	101.9	103.9	104.7	103.8	102.5	102.9	100.3	100.9
C10	111.2	108.2	106.7	106.9	114.4	114.7	111.1	111.6	109.3	113.6	111.5	106.8	108.2
C11	85.7	79.0	76.8	78.7	80.6	89.0	87.2	91.7	89.8	88.4	85.8	88.4	91.7
C12	93.3	113.4	105.8	114.6	120.2	125.9	117.4	132.5	141.3	133.5	116.4	126.0	101.0
C13	60.8	63.9	62.7	60.6	58.3	59.1	59.4	55.8	53.2	51.4	54.8	56.5	58.1
C14	67.3	63.8	64.0	66.1	63.0	66.1	65.9	64.6	68.3	63.4	64.9	61.2	60.6
C15	75.1	71.5	69.9	69.9	64.1	65.6	62.1	72.8	77.5	69.9	76.1	64.8	58.1
C16	84.8	82.1	87.9	82.0	73.4	78.0	82.2	92.5	87.6	87.6	82.6	79.1	84.9
C17	115.5	103.8	71.9	87.9	105.7	132.6	138.6	137.6	131.4	140.2	130.7	131.0	127.3
C18	112.2	109.1	100.3	103.6	104.6	107.1	102.1	103.2	100.3	96.7	92.5	93.9	94.3
C20	103.7	98.5	105.6	108.1	103.7	107.8	87.7	107.5	102.0	92.1	96.1	97.0	89.5
C21	102.3	105.0	107.2	97.0	103.4	100.7	107.1	109.3	110.9	124.0	109.2	115.4	109.4
C22	111.0	102.9	103.4	113.0	100.5	107.7	112.7	118.9	117.7	113.0	120.4	117.2	116.9
C23	92.4	84.0	83.9	88.0	60.5	84.7	87.9	85.1	83.3	86.1	85.6	82.5	87.8
C24	108.6	113.6	97.2	111.6	101.1	73.7	113.5	96.0	97.8	99.5	86.7	94.5	88.2
C25	130.5	114.2	89.1	99.3	95.9	100.7	94.9	111.0	94.7	91.4	95.7	90.5	101.1
C26	120.4	133.9	110.6	149.7	134.0	131.5	140.7	145.8	150.9	116.5	122.3	124.6	110.9
C27	145.3	158.1	153.9	150.7	154.8	168.9	185.2	188.1	188.9	181.2	178.0	181.0	184.2
C28	122.6	124.7	116.1	131.9	133.5	139.9	137.4	142.8	138.7	134.4	141.4	129.2	131.9
C29	149.1	143.5	127.5	127.4	144.3	142.0	146.3	146.7	149.0	152.5	154.0	169.6	169.3
C30	62.8	86.6	54.1	98.7	88.9	98.9	95.7	75.5	117.6	73.6	59.9	64.7	92.9
C31	114.9	109.9	109.2	105.3	94.1	101.1	102.1	114.7	111.9	111.2	113.5	116.2	113.0
C32	140.9	133.8	131.6	187.8	135.8	163.0	171.3	182.8	167.0	165.8	188.0	187.4	189.8
C33	99.0	112.4	102.9	102.4	111.9	98.5	98.4	109.9	100.2	89.4	108.8	79.8	107.3
D	117.8	120.9	116.2	114.7	116.6	105.4	111.7	113.4	111.1	120.3	121.6	107.6	106.5
D35	117.8	120.9	116.2	114.7	116.6	105.4	111.7	113.4	111.1	120.3	121.6	107.6	106.5



Table 4

Industrial Production Indices
(working day adjusted, 2005=100)

NACE.BG - 2008 Code	2009	2010	2011			2012									
	X	X	X	XI	XII	I	II	III	IV	V	VI	VII	VIII	IX	X
B_TO_E36	100.1	104.9	108.5	108.3	103.9	93.2	91.5	103.1	100.6	101.4	106.4	108.3	103.7	100.6	104.0
B	93.2	84.0	94.1	82.0	96.0	76.9	72.7	80.4	74.0	74.0	76.3	85.2	83.1	87.9	95.9
B05	124.7	131.1	140.9	146.8	131.2	108.8	106.4	113.5	92.1	101.8	72.2	108.5	105.4	121.1	127.6
B07	90.1	67.4	79.6	46.6	90.6	73.0	65.6	72.5	73.4	61.6	84.4	72.3	74.5	73.9	80.9
B08	79.5	72.2	74.4	65.1	67.0	42.2	39.6	58.9	66.0	69.4	86.6	103.0	87.5	92.2	106.9
C	98.6	106.1	108.6	106.2	95.7	85.1	83.4	103.2	102.8	107.0	113.5	109.6	103.5	103.5	106.3
C10	116.9	126.9	122.8	115.7	112.3	89.3	98.7	113.3	106.8	108.4	112.1	115.2	115.7	115.7	119.0
C11	90.4	72.7	77.8	75.1	87.2	49.0	52.6	83.8	85.5	98.5	108.9	111.0	107.4	95.4	83.5
C12	139.6	116.4	107.5	136.9	103.7	91.8	89.9	118.1	102.7	139.6	167.1	154.3	118.4	135.2	95.2
C13	66.7	71.5	61.2	67.4	53.3	48.4	55.7	65.1	66.3	61.9	62.3	55.5	45.1	54.7	59.5
C14	71.6	73.5	68.5	63.9	64.5	65.6	60.3	65.3	60.6	57.5	74.4	73.5	65.9	60.4	60.8
C15	80.8	82.0	77.7	70.0	65.2	68.6	63.6	67.3	51.6	63.0	84.2	83.8	75.3	69.9	58.0
C16	76.4	101.1	93.6	87.8	83.4	62.9	56.8	74.5	78.6	91.2	94.2	96.2	85.4	86.4	95.0
C17	79.1	111.5	112.9	101.9	69.5	80.7	96.2	138.1	143.0	139.0	142.5	148.5	131.4	134.7	121.2
C18	126.9	122.2	124.6	118.1	113.3	85.2	91.3	101.1	96.8	96.6	104.5	96.4	94.2	99.0	104.4
C20	83.8	100.5	100.9	101.8	104.3	100.3	97.1	119.0	90.0	105.8	105.9	92.5	90.4	97.6	86.7
C21	85.8	99.2	114.7	115.7	110.0	75.6	103.6	105.1	105.8	106.0	126.4	115.0	105.0	116.4	118.3
C22	122.8	127.1	124.4	109.3	97.9	90.6	83.9	108.7	109.4	115.7	127.9	124.0	124.8	124.8	131.1
C23	89.6	88.9	103.8	88.5	72.4	60.5	48.3	82.4	91.0	91.5	93.4	95.1	90.3	90.7	99.8
C24	108.5	108.6	118.1	117.3	76.1	105.8	97.0	83.6	119.4	99.5	96.5	109.8	78.5	86.5	94.9
C25	83.0	101.9	129.4	120.2	105.6	70.9	84.9	103.5	94.9	108.9	101.4	94.4	95.3	92.5	101.8
C26	105.9	117.9	122.3	139.4	138.1	128.0	114.7	135.4	137.2	139.5	158.0	114.6	110.0	131.9	111.6
C27	150.3	172.1	163.8	181.5	147.4	136.1	142.8	170.1	185.0	180.5	205.8	195.7	158.2	188.4	202.4
C28	99.9	124.9	131.3	132.5	112.1	111.3	126.4	149.1	134.3	141.0	154.5	142.9	131.5	130.2	137.8
C29	132.4	171.8	157.3	158.5	120.1	114.7	133.6	150.0	151.8	152.3	161.1	150.9	135.2	171.1	177.1
C30	139.6	48.6	52.2	81.5	59.4	57.7	70.3	108.4	88.1	100.4	141.5	76.3	56.6	63.2	81.8
C31	91.0	114.0	126.2	119.7	114.1	86.8	81.2	102.0	97.8	112.2	118.7	115.5	114.9	120.1	123.8
C32	193.6	163.4	163.0	142.8	121.7	151.8	117.1	160.3	165.9	182.8	190.0	165.2	192.5	202.3	220.7
C33	102.2	122.8	102.7	121.7	140.7	70.2	93.9	98.1	89.4	103.8	105.9	88.8	109.8	83.2	113.3
D	107.6	110.5	113.4	129.3	140.9	131.7	129.7	114.7	103.8	95.0	95.2	113.2	112.8	92.8	99.9
D35	107.6	110.5	113.4	129.3	140.9	131.7	129.7	114.7	103.8	95.0	95.2	113.2	112.8	92.8	99.9