

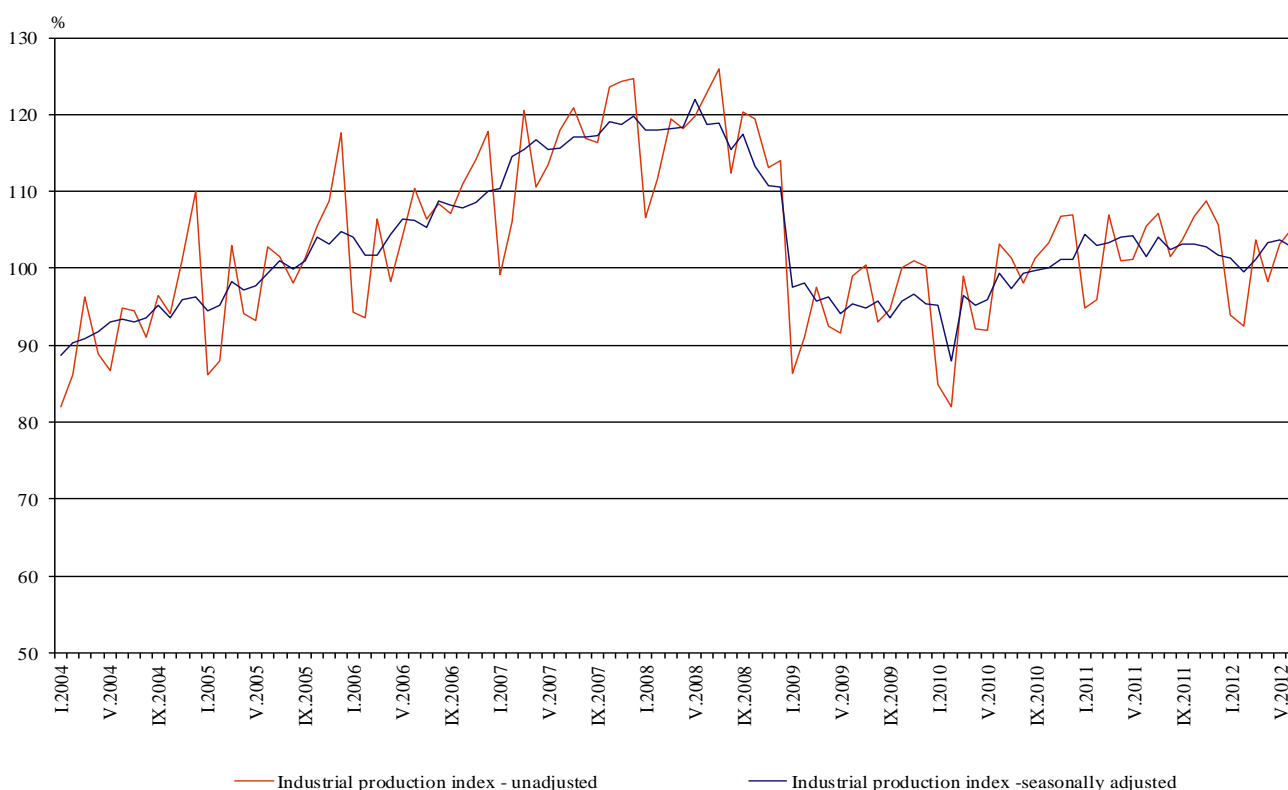


INDUSTRIAL PRODUCTION INDICES IN JUNE 2012¹

The preliminary data show that the Industrial Production Index², seasonally adjusted³, decreased by 0.8% in June 2012 as compared to May 2012.

In June 2012 working day adjusted⁴ Industrial Production Index rose by 1.5% in comparison with the same month of 2011.

Figure 1. Industrial Production Indices (2005=100)



¹ June 2012 data are preliminary.

² Monthly Industrial Production and Industrial turnover indices measure changes in production and turnover values of industrial enterprises. This information can be used to assess the current economic development and for short-term forecasts. Indices do not measure the actual production level, it aims to measure the average change in value of production between two points of time. Indices are compiled on the basis of information collected through representative sampling survey on industrial enterprises. The sample covers enterprises with annual turnover more than 97% of total turnover in industry.

Industrial production indices are calculated at constant base year (2005) that is to say they are weighted with the structure of the value added at factor costs in the base year.

³ Seasonal adjustment is a statistical method, which eliminates the seasonal component of time series and it is particularly suitable for long-term comparisons and analysis of the data.

⁴ Working day adjustment is an adjustment for variations caused by calendar effects, different number of calendar and working days in the months, national holidays and outliers (for example the presence of more non-working days in May could contribute to the decline in the production in some activities).

The seasonally and working day adjusted data on Industrial production index by months, starting from January 2000 can be found on the NSI internet web-site: (<http://www.nsi.bg/otrasalen.php?otr=46>).

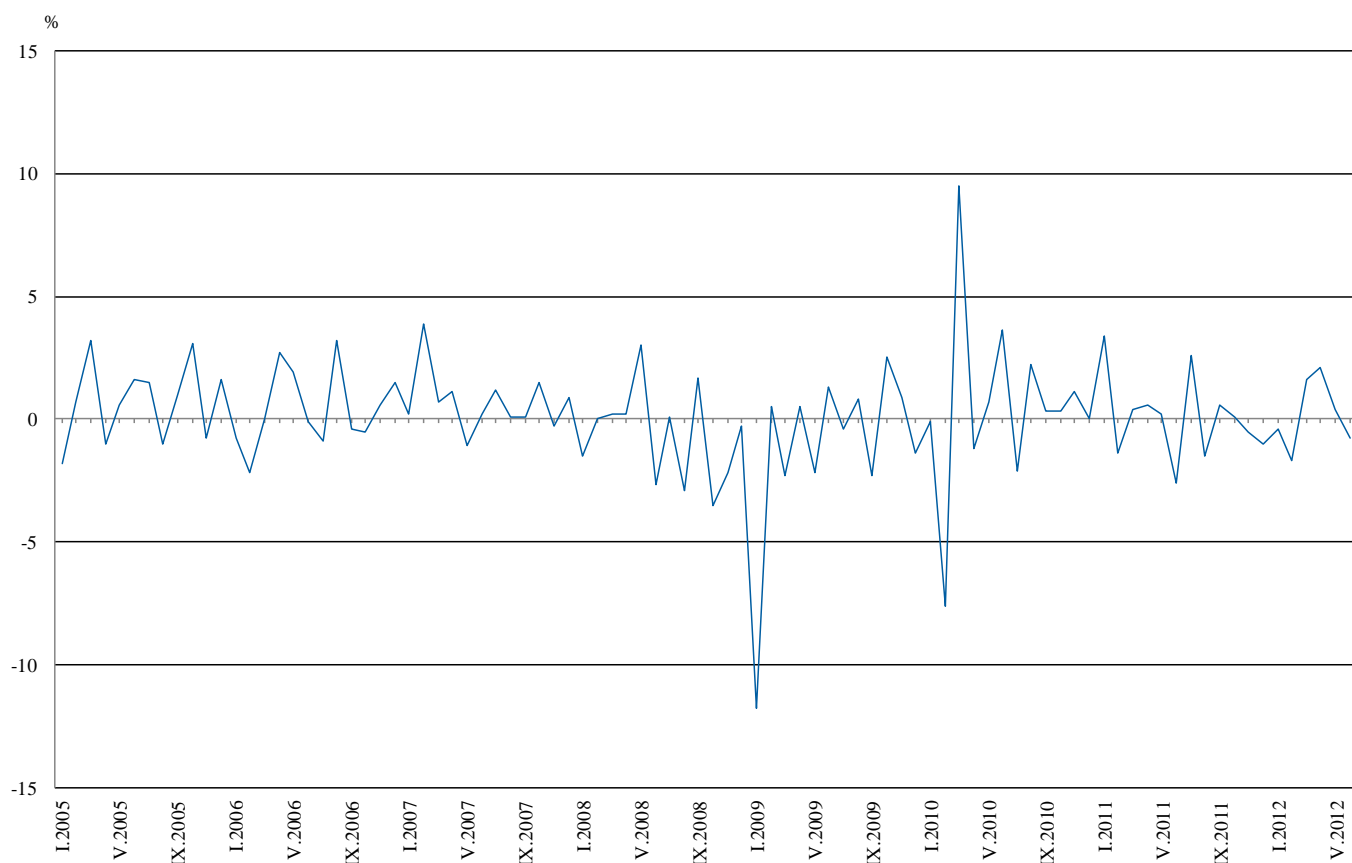


Monthly comparisons

In June 2012 as compared to May 2012, the seasonally adjusted Industrial Production Index in the electricity, gas, steam and air conditioning supply decreased by 2.7% and in the manufacturing by 1.2%, while in the mining and quarrying industry an increase by 5.0% was seen.

The most significant decreases of production in the manufacturing were seen in the manufacture of chemicals and chemical products by 17.9%, in the repair and installation of machinery and equipment by 15.8%, in the manufacture of fabricated metal products, except machinery and equipment by 15.3%, in the manufacture of textiles by 8.6%, in the manufacture of furniture by 6.2%. There was increase in the manufacture of other transport equipment by 57.9%, in the manufacture of wearing apparel by 6.8%, in the manufacture of tobacco products by 6.3%.

Figure 2. Percentage changes of Industrial Production Indices compared to the previous month (seasonally adjusted)



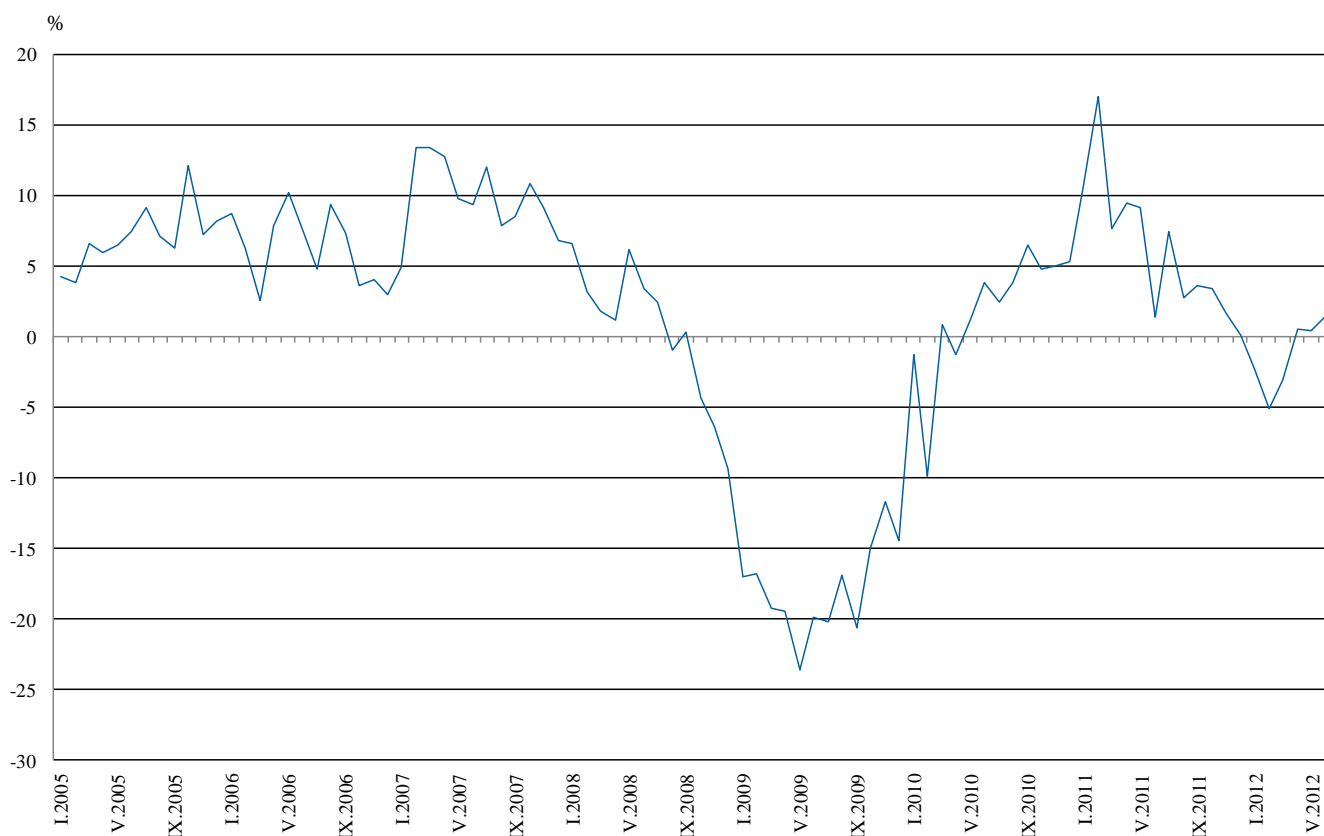


Annual comparisons

On annual bases in June 2012 Industrial Production Index, calculated from working day adjusted data in the mining and quarrying industry increased by 8.5% and in the manufacturing by 3.3%, while in the electricity, gas, steam and air conditioning supply a decrease by 5.5% was seen.

Increase was registered in the production of investment goods by 9.2%, while decreases were seen in the production of energy by 5.0% and in the production of intermediate goods by 1.0%.

Figure 3. Percentage changes of Industrial Production Indices compared to the same month of the previous year
(working day adjusted)



The final data on Industrial Production and Turnover Indices for May 2012 can be found on the NSI internet web-site: (<http://www.nsi.bg/otrasalen.php?otr=46>).

Percentage changes of Industrial Production Indices compared to the previous month*

Economic Activities	NACE.BG - 2008 Code	2012					
		I	II	III	IV	V	VI
Industry	B_TO_E36	-0.4	-1.7	1.6	2.1	0.4	-0.8
Mining and quarrying	B	-8.7	-5.4	5.0	-6.7	2.8	5.0
of which:							
Mining of coal and lignite	B05	-13.5	3.4	7.3	-4.2	-0.6	-17.7
Mining of metal ores	B07	-16.5	-10.1	10.5	1.2	-20.2	45.7
Other mining and quarrying	B08	-2.9	-12.5	19.5	5.2	-1.4	19.3
Manufacturing	C	1.9	-2.8	4.6	2.0	0.8	-1.2
of which:							
Manufacture of food products	C10	0.2	7.0	0.3	-3.1	0.5	-2.6
Manufacture of beverages	C11	2.5	2.4	10.4	-2.0	5.2	2.9
Manufacture of tobacco products	C12	8.3	4.9	4.7	-6.8	12.9	6.3
Manufacture of textiles	C13	-3.3	-3.8	1.4	0.5	-6.1	-8.6
Manufacture of wearing apparel	C14	3.3	-4.7	4.9	-0.3	-2.0	6.8
Manufacture of leather and related products	C15	0.0	-8.3	2.3	-5.3	17.2	1.2
Manufacture of wood and of products of wood and cork, except furniture; manufacture of articles of straw and plaiting materials	C16	-6.7	-10.5	6.3	5.4	12.5	-3.9
Manufacture of paper and paper products	C17	22.3	20.3	25.4	4.5	-0.7	-4.2
Printing and reproduction of recorded media	C18	3.3	1.0	2.4	-4.7	1.1	-2.4
Manufacture of chemicals and chemical products	C20	2.4	-4.1	4.0	-18.6	22.6	-17.9
Manufacture of basic pharmaceutical products and pharmaceutical preparations	C21	-9.5	6.6	-2.6	6.4	2.1	-1.4
Manufacture of rubber and plastic products	C22	9.3	-11.1	7.2	4.6	5.5	-0.7
Manufacture of other non-metallic mineral products	C23	4.9	-31.3	40.0	3.8	-3.2	-1.2
Manufacture of basic metals	C24	14.8	-9.4	-27.1	54.0	-15.4	1.9
Manufacture of fabricated metal products, except machinery and equipment	C25	11.4	-3.4	5.0	-5.8	17.0	-15.3
Manufacture of computer, electronic and optical products	C26	35.4	-10.5	-1.9	7.0	3.6	2.2
Manufacture of electrical equipment	C27	-2.1	2.7	9.1	9.7	1.6	1.5
Manufacture of machinery and equipment n.e.c.	C28	13.6	1.2	4.8	-1.8	3.9	-3.2
Manufacture of motor vehicles, trailers and semi-trailers	C29	-0.1	13.3	-1.6	3.0	0.3	0.1
Manufacture of other transport equipment	C30	82.4	-9.9	11.2	-3.2	-21.1	57.9
Manufacture of furniture	C31	-3.6	-10.6	7.4	1.0	12.3	-6.2
Other manufacturing	C32	42.7	-27.7	20.0	5.1	6.7	-8.8
Repair and installation of machinery and equipment	C32	-0.5	9.3	-12.0	-0.1	11.7	-15.8
Electricity, gas, steam and air conditioning supply	D	-1.3	1.7	-9.6	6.0	1.5	-2.7
Electricity, gas, steam and air conditioning supply	D35	-1.3	1.7	-9.6	6.0	1.5	-2.7

* Seasonally adjusted



Table 2

Percentage changes of Industrial Production Indices compared to the same month of the previous

Economic Activities	NACE.BG -2008 Code	year *					
		2012					
		I	II	III	IV	V	VI
Industry	B_TO_E36	-2.2	-5.1	-3.1	0.5	0.4	1.5
Mining and quarrying	B	0.0	3.3	3.2	-5.0	-13.1	8.5
of which:							
Mining of coal and lignite	B05	-5.8	-5.5	3.6	-23.9	-19.6	-31.2
Mining of metal ores	B07	1.0	21.3	7.4	11.7	-8.1	55.4
Other mining and quarrying	B08	1.9	-25.6	11.8	5.9	-4.7	27.9
Manufacturing	C	-2.9	-6.9	0.1	4.5	4.6	3.3
of which:							
Manufacture of food products	C10	-9.9	-3.6	3.8	-1.7	2.7	1.7
Manufacture of beverages	C11	-14.2	-15.6	7.4	4.8	3.8	15.7
Manufacture of tobacco products	C12	16.1	21.7	40.4	13.2	36.6	35.8
Manufacture of textiles	C13	-12.9	-19.6	-13.7	-15.4	-23.8	-32.2
Manufacture of wearing apparel	C14	-5.7	-15.8	-4.5	-1.1	-10.7	3.5
Manufacture of leather and related products	C15	-10.9	-13.9	-20.6	-21.8	-9.0	-1.4
Manufacture of wood and of products of wood and cork, except furniture; manufacture of articles of straw and plaiting materials	C16	-11.8	-25.8	-9.1	-4.3	18.0	4.8
Manufacture of paper and paper products	C17	-44.5	-27.0	-4.3	-5.2	-14.0	-13.8
Printing and reproduction of recorded media	C18	-7.8	-6.6	-2.6	1.7	-3.0	-3.2
Manufacture of chemicals and chemical products	C20	-6.6	-15.0	12.5	-19.4	-6.6	-19.5
Manufacture of basic pharmaceutical products and pharmaceutical preparations	C21	11.2	14.7	6.7	15.4	16.7	12.4
Manufacture of rubber and plastic products	C22	-5.6	-18.9	-7.6	1.4	0.0	4.2
Manufacture of other non-metallic mineral products	C23	2.9	-30.7	-1.4	1.8	-1.4	-5.2
Manufacture of basic metals	C24	12.2	0.4	-24.3	14.5	-16.6	-11.1
Manufacture of fabricated metal products, except machinery and equipment	C25	-13.0	6.9	-6.3	-7.4	1.3	-14.1
Manufacture of computer, electronic and optical products	C26	21.3	2.4	8.4	21.8	13.2	15.6
Manufacture of electrical equipment	C27	-1.4	-2.4	6.7	38.6	28.9	29.8
Manufacture of machinery and equipment n.e.c.	C28	12.2	12.7	20.8	22.5	14.4	12.7
Manufacture of motor vehicles, trailers and semi-trailers	C29	-26.6	2.0	-3.1	14.5	-2.2	5.9
Manufacture of other transport equipment	C30	9.9	6.4	21.3	5.5	-41.4	74.5
Manufacture of furniture	C31	-3.1	-15.0	-4.3	-4.1	6.9	2.6
Other manufacturing	C32	16.1	-12.7	7.3	33.9	11.0	2.0
Repair and installation of machinery and equipment	C33	-11.0	0.6	-3.3	-8.2	18.8	2.2
Electricity, gas, steam and air conditioning supply	D	0.3	-4.0	-14.1	-11.8	-7.1	-5.5
Electricity, gas, steam and air conditioning supply	D35	0.3	-4.0	-14.1	-11.8	-7.1	-5.5

* Working day adjusted



Table 3

Industrial Production Indices
(seasonally adjusted, 2005=100)

NACE.BG - 2008 Code	2011							2012					
	VI	VII	VIII	IX	X	XI	XII	I	II	III	IV	V	VI
B_TO_E36	101.5	104.1	102.5	103.1	103.2	102.7	101.7	101.3	99.6	101.2	103.3	103.7	102.9
B	76.0	84.6	81.6	84.1	84.2	75.8	90.0	82.2	77.8	81.7	76.2	78.3	82.2
B05	120.5	114.5	120.6	121.2	116.6	123.0	121.2	104.8	108.4	116.3	111.4	110.7	91.1
B07	55.7	80.0	66.3	79.4	76.4	46.1	87.4	73.0	65.6	72.5	73.4	58.6	85.4
B08	63.2	66.9	65.3	58.1	65.7	59.3	62.0	60.2	52.7	63.0	66.3	65.4	78.0
C	100.6	102.7	100.5	102.7	101.8	101.0	98.3	100.2	97.4	101.9	103.9	104.7	103.4
C10	106.6	110.8	108.1	110.1	111.2	108.2	106.7	106.9	114.4	114.7	111.1	111.6	108.7
C11	83.7	88.9	84.7	88.5	85.7	79.0	76.8	78.7	80.6	89.0	87.2	91.7	94.4
C12	107.2	101.1	99.2	94.6	93.3	113.4	105.8	114.6	120.2	125.9	117.4	132.5	140.8
C13	73.7	66.8	77.7	66.3	60.8	63.9	62.7	60.6	58.3	59.1	59.4	55.8	51.0
C14	68.6	71.9	70.2	69.5	67.3	63.8	64.0	66.1	63.0	66.1	65.9	64.6	69.0
C15	74.9	81.2	81.0	80.5	75.1	71.5	69.9	69.9	64.1	65.6	62.1	72.8	73.7
C16	84.6	88.1	86.1	85.6	84.8	82.1	87.9	82.0	73.4	78.0	82.2	92.5	88.9
C17	151.8	148.4	137.0	134.5	115.5	103.8	71.9	87.9	105.7	132.6	138.6	137.6	131.8
C18	103.6	108.2	99.6	100.1	112.2	109.1	100.3	103.6	104.6	107.1	102.1	103.2	100.7
C20	107.6	106.6	110.4	109.2	103.7	98.5	105.6	108.1	103.7	107.8	87.7	107.5	88.3
C21	96.4	97.7	98.0	96.6	102.3	105.0	107.2	97.0	103.4	100.7	107.1	109.3	107.8
C22	113.6	115.4	115.2	118.3	111.0	102.9	103.4	113.0	100.5	107.7	112.7	118.9	118.1
C23	88.0	87.2	86.0	92.1	92.4	84.0	83.9	88.0	60.5	84.7	87.9	85.1	84.1
C24	108.0	110.2	106.0	96.2	108.6	113.6	97.2	111.6	101.1	73.7	113.5	96.0	97.8
C25	108.0	111.9	100.5	113.0	130.5	114.2	89.1	99.3	95.9	100.7	94.9	111.0	94.0
C26	128.1	142.9	121.6	115.4	120.4	133.9	110.6	149.7	134.0	131.5	140.7	145.8	149.0
C27	152.9	158.9	153.7	142.7	145.3	158.1	153.9	150.7	154.8	168.9	185.2	188.1	190.9
C28	122.7	125.1	117.7	125.4	122.6	124.7	116.1	131.9	133.5	139.9	137.4	142.8	138.3
C29	137.8	153.0	153.5	128.8	149.1	143.5	127.5	127.4	144.3	142.0	146.3	146.7	146.8
C30	77.8	68.3	47.7	78.7	62.8	86.6	54.1	98.7	88.9	98.9	95.7	75.5	119.2
C31	105.7	113.0	117.1	112.7	114.9	109.9	109.2	105.3	94.1	101.1	102.1	114.7	107.6
C32	163.8	169.1	161.6	141.8	140.9	133.8	131.6	187.8	135.8	163.0	171.3	182.8	166.8
C33	89.6	79.9	94.8	131.5	99.0	112.4	102.9	102.4	111.9	98.5	98.4	109.9	92.5
D	114.1	123.3	118.5	110.1	117.8	120.9	116.2	114.7	116.6	105.4	111.7	113.4	110.3
D35	114.1	123.3	118.5	110.1	117.8	120.9	116.2	114.7	116.6	105.4	111.7	113.4	110.3



Table 4

Industrial Production Indices
(working day adjusted, 2005=100)

NACE.BG - 2008 Code	2009	2010	2011							2012					
	VI	VI	VI	VII	VIII	IX	X	XI	XII	I	II	III	IV	V	VI
B_TO_E36	98.9	102.7	104.1	108.8	101.1	103.8	108.5	108.3	103.9	93.2	91.5	103.1	100.6	101.4	105.7
B	69.4	79.1	73.0	83.9	79.5	86.4	94.1	82.0	96.0	76.9	72.7	80.4	74.0	74.0	79.2
B05	68.6	89.6	104.9	109.7	112.2	125.2	140.9	146.8	131.2	108.8	106.4	113.5	92.1	101.8	72.2
B07	74.5	83.1	58.3	78.8	65.9	77.4	79.6	46.6	90.6	73.0	65.6	72.5	73.4	61.6	90.6
B08	89.1	72.0	68.2	70.2	68.9	62.0	74.4	65.1	67.0	42.2	39.6	58.9	66.0	69.4	87.2
C	100.4	106.1	108.6	110.4	101.1	107.2	108.6	106.2	95.7	85.1	83.4	103.2	102.8	107.0	112.2
C10	114.4	124.6	109.5	112.5	112.4	120.1	122.8	115.7	112.3	89.3	98.7	113.3	106.8	108.4	111.4
C11	118.1	106.2	99.9	110.1	108.3	95.5	77.8	75.1	87.2	49.0	52.6	83.8	85.5	98.5	115.6
C12	112.7	114.8	123.0	116.2	115.6	104.1	107.5	136.9	103.7	91.8	89.9	118.1	102.7	139.6	167.0
C13	75.9	79.2	86.1	74.6	63.6	63.7	61.2	67.4	53.3	48.4	55.7	65.1	66.3	61.9	58.4
C14	80.0	69.4	71.5	83.5	70.4	68.5	68.5	63.9	64.5	65.6	60.3	65.3	60.6	57.5	74.0
C15	83.4	82.3	79.6	95.2	78.6	84.3	77.7	70.0	65.2	68.6	63.6	67.3	51.6	63.0	78.5
C16	77.5	88.4	91.2	96.2	89.9	93.2	93.6	87.8	83.4	62.9	56.8	74.5	78.6	91.2	95.6
C17	65.3	147.8	166.1	157.1	139.1	139.9	112.9	101.9	69.5	80.7	96.2	138.1	143.0	139.0	143.2
C18	144.8	107.2	108.3	108.3	103.9	106.2	124.6	118.1	113.3	85.2	91.3	101.1	96.8	96.6	104.8
C20	81.4	93.0	112.7	108.0	104.6	110.2	100.9	101.8	104.3	100.3	97.1	119.0	90.0	105.8	90.7
C21	80.8	99.6	109.5	84.1	97.6	95.5	114.7	115.7	110.0	75.6	103.6	105.1	105.8	106.0	123.1
C22	115.5	120.1	122.9	127.6	117.9	124.6	124.4	109.3	97.9	90.6	83.9	108.7	109.4	115.7	128.1
C23	100.4	98.2	99.9	95.6	90.1	102.1	103.8	88.5	72.4	60.5	48.3	82.4	91.0	91.5	94.7
C24	91.3	94.6	108.6	120.1	101.5	88.1	118.1	117.3	76.1	105.8	97.0	83.6	119.4	99.5	96.5
C25	88.8	109.0	116.6	116.8	100.5	116.4	129.4	120.2	105.6	70.9	84.9	103.5	94.9	108.9	100.2
C26	113.2	104.4	134.4	142.6	110.8	123.2	122.3	139.4	138.1	128.0	114.7	135.4	137.2	139.5	155.4
C27	128.6	148.8	158.8	170.8	139.8	150.9	163.8	181.5	147.4	136.1	142.8	170.1	185.0	180.5	206.1
C28	110.7	119.2	135.7	136.1	108.6	129.9	131.3	132.5	112.1	111.3	126.4	149.1	134.3	141.0	152.9
C29	120.4	181.2	149.3	149.8	137.2	127.3	157.3	158.5	120.1	114.7	133.6	150.0	151.8	152.3	158.1
C30	95.2	89.7	81.5	74.7	49.5	86.3	52.2	81.5	59.4	57.7	70.3	108.4	88.1	100.4	142.2
C31	94.4	101.7	110.4	117.0	118.5	115.2	126.2	119.7	114.1	86.8	81.2	102.0	97.8	112.2	113.3
C32	179.9	143.3	186.0	169.1	164.4	152.6	163.0	142.8	121.7	151.8	117.1	160.3	165.9	182.8	189.7
C33	82.9	122.2	93.8	81.7	93.3	141.3	102.7	121.7	140.7	70.2	93.9	98.1	89.4	103.8	95.9
D	103.5	100.3	100.5	115.3	108.1	97.2	113.4	129.3	140.9	131.7	129.7	114.7	103.8	95.0	95.0
D35	103.5	100.3	100.5	115.3	108.1	97.2	113.4	129.3	140.9	131.7	129.7	114.7	103.8	95.0	95.0