

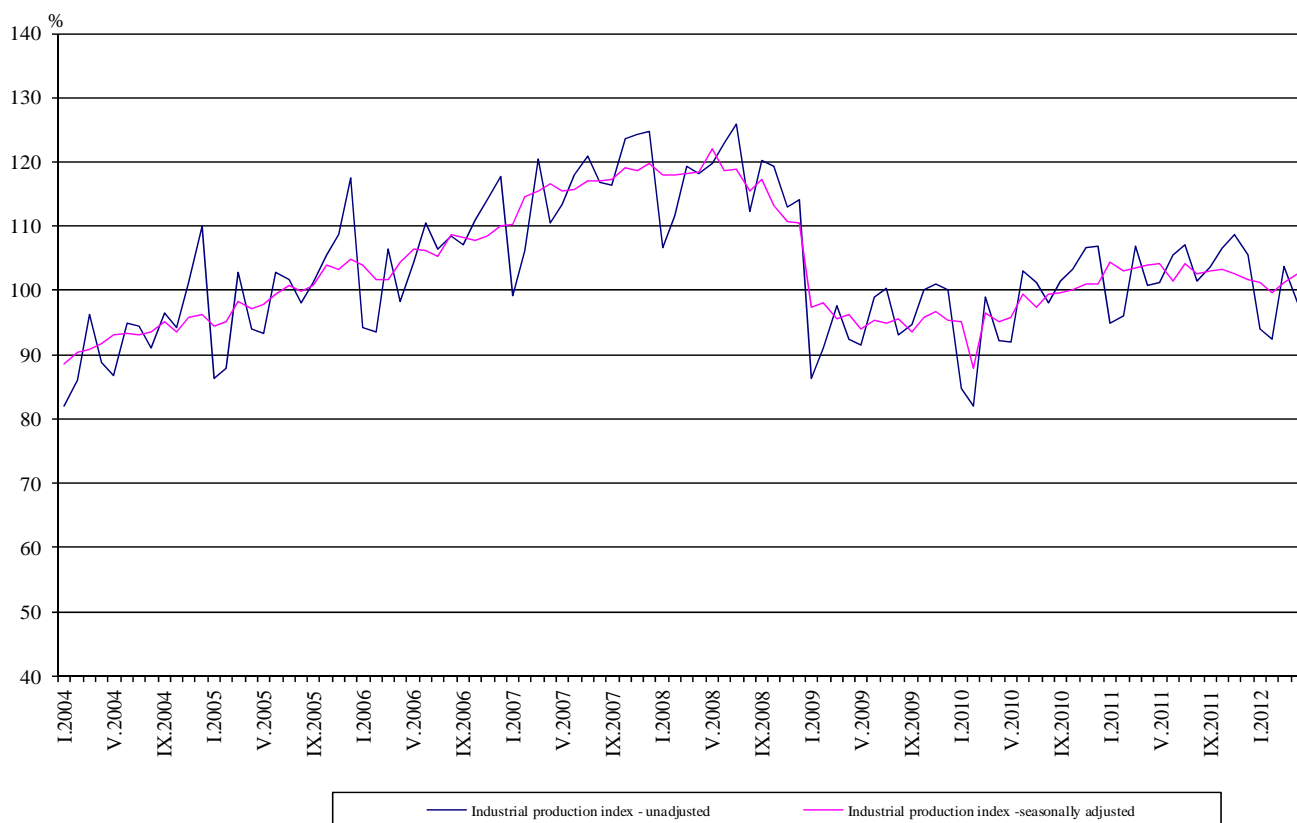


Industrial Production Indices in April 2012¹

The preliminary data showed that the Industrial Production Index², seasonally adjusted³, increased by 1.5% in April 2012 as compared to March 2012.

In April 2012 working day adjusted⁴ Industrial Production Index rose by 0.3% as compared to the same month of 2011.

**Figure 1. Industrial Production Indices
(2005=100)**



¹April 2012 data are preliminary.

² Monthly Industrial Production and Industrial turnover indices measure changes in **production and turnover values** of industrial enterprises. This information can be used to assess the current economic development and for short-term forecasts. Indices do not measure the actual production level, it aims to measure the average change in value of production between two points of time

Indices are compiled on the base of information collected through representative sampling survey on industrial enterprises. The sample covers enterprises with annual turnover more than 97% of total turnover in industry.

Industrial production indices are calculated at constant base year (2005) that is to say they are weighted with the structure of the value added at factor costs in the base year.

³ **Seasonal adjustment** is a statistical method, which eliminates the seasonal component of time series and it is particularly suitable for long-term comparisons and analysis of the data.

⁴ **Working day adjustment** is an adjustment for variations caused by calendar effects, different number of calendar and working days in the months, national holidays and outliers (for example the presence of more non-working days in May could contribute to the decline in the production in some activities).

The seasonally and working day adjusted data on Industrial production index by months, starting from January 2000 can be found in NSI internet web-site: (<http://www.nsi.bg/otrasalen.php?otr=46>).

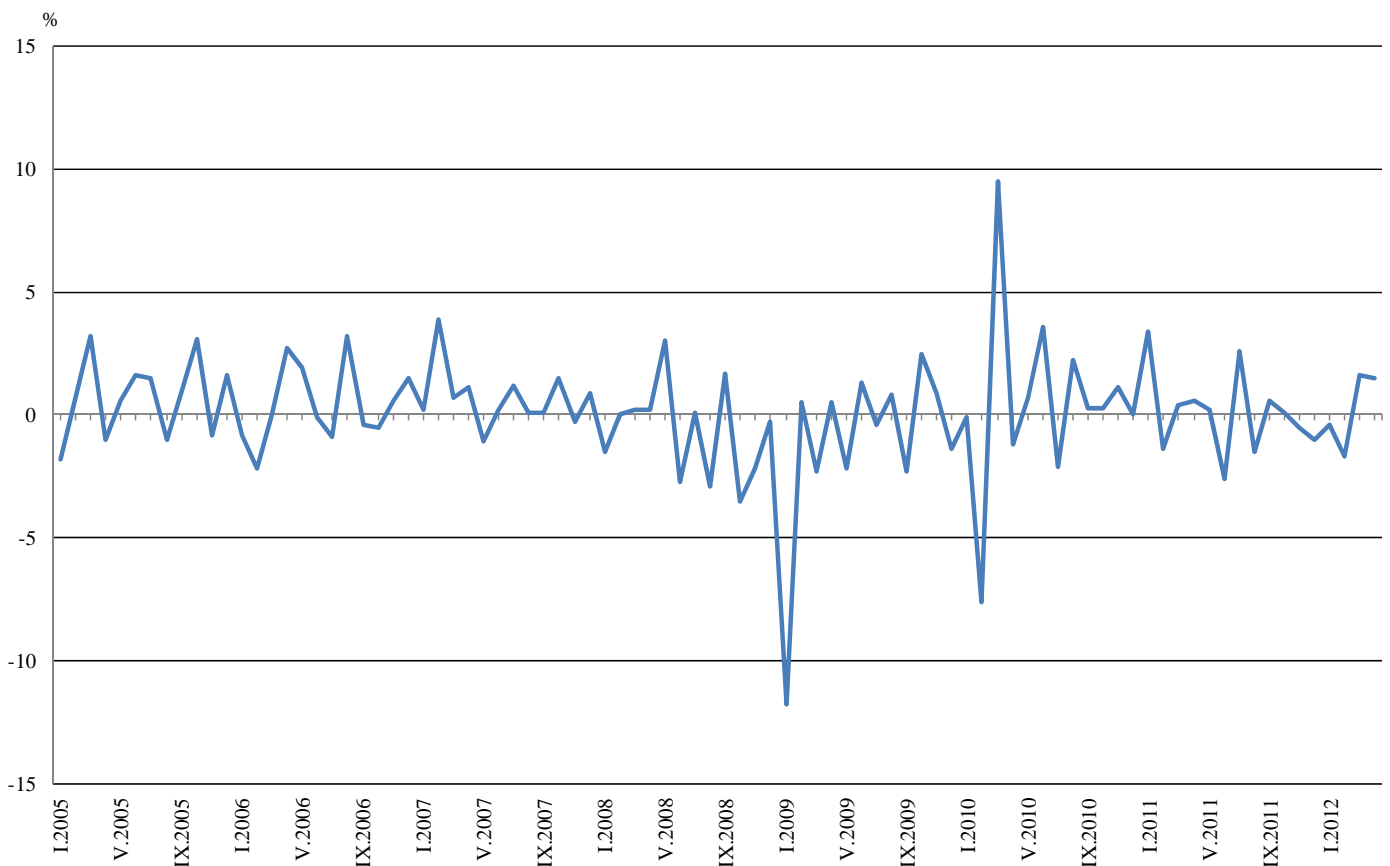


Monthly comparisons

In April 2012 as compared to March 2012, the seasonally adjusted Industrial Production Index in the electricity, gas, steam and air conditioning supply increased by 6.0% and in the manufacturing by 1.4%, while in the mining and quarrying industry a decrease by 6.7% was registered.

The most significant increases of production in the manufacturing were seen in the manufacture of basic metals by 56.0%, in the manufacture of electrical equipment by 9.2%, in the manufacture of basic pharmaceutical products and pharmaceutical preparations by 6.1%, in the manufacture of paper and paper products by 4.7%. There was decrease in the manufacture of chemicals and chemical products by 19.4%, in the manufacture of fabricated metal products, except machinery and equipment by 6.9%, in the printing and reproduction of recorded media by 6.7%.

Figure 2. Percentage changes of Industrial Production Indices compared to the previous month
(seasonally adjusted)



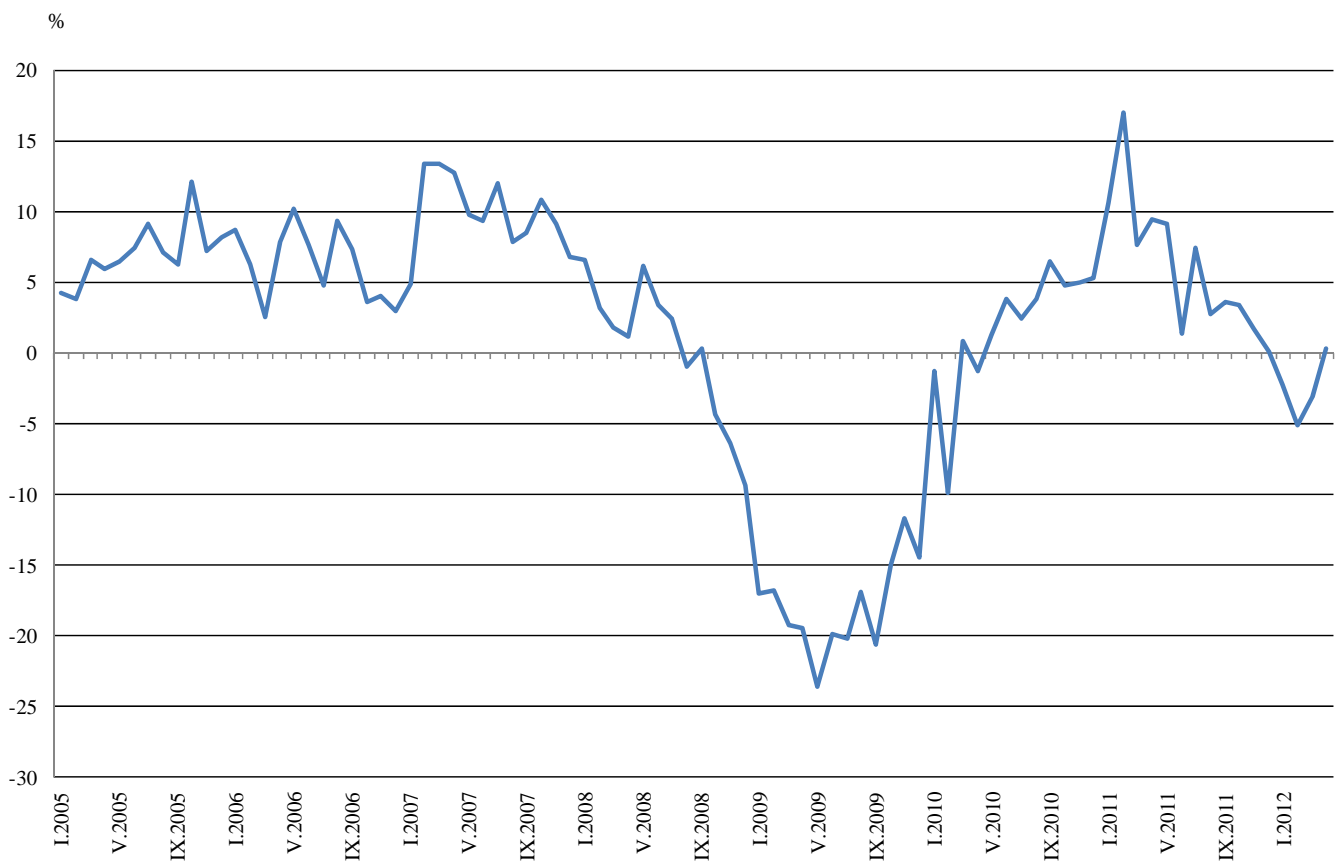


Annual comparisons

On annual bases in April 2012 Industrial Production Index calculated from working day adjusted data in the manufacturing increased by 4.2%, while decreases were registered in the electricity, gas, steam and air conditioning supply by 11.9% and in the mining and quarrying industry by 5.1%.

Increases were registered in the production of investment goods by 10.2% and in the production of intermediate goods by 4.3%, while in the production of energy a decrease by 10.1% was seen.

Figure 3. Percentage changes of Industrial Production Indices compared to the same month of the previous year
(working day adjusted)



The final data on Industrial Production and Turnover Indices for March 2012 can be found in NSI internet web-site: (<http://www.nsi.bg/otrasalen.php?otr=46>).



Table 1

Percentage changes of Industrial Production Indices compared to the previous month¹

Economic Activities	NACE.BG - 2008 Code	2011		2012			
		XI	XII	I	II	III	IV
Industry	B_TO_E36	-0.5	-1.0	-0.4	-1.7	1.6	1.5
Mining and quarrying	B	-10.0	18.7	-8.7	-5.4	5.0	-6.7
of which:							
Mining of coal and lignite	B05	5.5	-1.5	-13.5	3.4	7.3	-4.2
Mining of metal ores	B07	-39.7	89.6	-16.5	-10.1	10.5	1.4
Other mining and quarrying	B08	-9.7	4.6	-2.9	-12.5	19.5	5.6
Manufacturing	C	-0.8	-2.7	1.9	-2.8	4.6	1.4
of which:							
Manufacture of food products	C10	-2.7	-1.4	0.2	7.0	0.3	-3.1
Manufacture of beverages	C11	-7.8	-2.8	2.5	2.4	10.4	-4.0
Manufacture of tobacco products	C12	21.5	-6.7	8.3	4.9	4.7	-4.2
Manufacture of textiles	C13	5.1	-1.9	-3.3	-3.8	1.4	-0.7
Manufacture of wearing apparel	C14	-5.2	0.3	3.3	-4.7	4.9	-0.6
Manufacture of leather and related products	C15	-4.8	-2.2	0.0	-8.3	2.3	-6.7
Manufacture of wood and of products of wood and cork, except furniture; manufacture of articles of straw and plaiting materials	C16	-3.2	7.1	-6.7	-10.5	6.3	4.2
Manufacture of paper and paper products	C17	-10.1	-30.7	22.3	20.3	25.4	4.7
Printing and reproduction of recorded media	C18	-2.8	-8.1	3.3	1.0	2.4	-6.7
Manufacture of chemicals and chemical products	C20	-5.0	7.2	2.4	-4.1	4.0	-19.4
Manufacture of basic pharmaceutical products and pharmaceutical preparations	C21	2.6	2.1	-9.5	6.6	-2.6	6.1
Manufacture of rubber and plastic products	C22	-7.3	0.5	9.3	-11.1	7.2	3.2
Manufacture of other non-metallic mineral products	C23	-9.1	-0.1	4.9	-31.3	40.0	3.1
Manufacture of basic metals	C24	4.6	-14.4	14.8	-9.4	-27.1	56.0
Manufacture of fabricated metal products, except machinery and equipment	C25	-12.5	-22.0	11.4	-3.4	5.0	-6.9
Manufacture of computer, electronic and optical products	C26	11.2	-17.4	35.4	-10.5	-1.9	7.3
Manufacture of electrical equipment	C27	8.8	-2.7	-2.1	2.7	9.1	9.2
Manufacture of machinery and equipment n.e.c.	C28	1.7	-6.9	13.6	1.2	4.8	-2.1
Manufacture of motor vehicles, trailers and semi-trailers	C29	-3.8	-11.1	-0.1	13.3	-1.6	-3.4
Manufacture of other transport equipment	C30	37.9	-37.5	82.4	-9.9	11.2	-2.3
Manufacture of furniture	C31	-4.4	-0.6	-3.6	-10.6	7.4	0.3
Other manufacturing	C32	-5.0	-1.6	42.7	-27.7	20.0	4.8
Repair and installation of machinery and equipment	C32	13.5	-8.5	-0.5	9.3	-12.0	-0.1
Electricity, gas, steam and air conditioning supply	D	2.6	-3.9	-1.3	1.7	-9.6	6.0
Electricity, gas, steam and air conditioning supply	D35	2.6	-3.9	-1.3	1.7	-9.6	6.0

¹ Seasonally adjusted.

Percentage changes of Industrial Production Indices compared to the same month of the previous year¹

Economic Activities	NACE.BG - 2008 Code	2011		2012			
		XI	XII	I	II	III	IV
Industry	B_TO_E36	1.7	0.1	-2.2	-5.1	-3.1	0.3
Mining and quarrying	B	-7.2	23.4	0.0	3.3	3.2	-5.1
of which:							
Mining of coal and lignite	B05	18.2	22.3	-5.8	-5.5	3.6	-24.1
Mining of metal ores	B07	-43.1	27.8	1.0	21.3	7.4	11.9
Other mining and quarrying	B08	-11.5	-5.4	1.9	-25.6	11.8	6.6
Manufacturing	C	-1.0	-2.9	-2.9	-6.9	0.1	4.2
of which:							
Manufacture of food products	C10	-9.6	-7.7	-9.9	-3.6	3.8	-1.7
Manufacture of beverages	C11	-14.1	-10.5	-14.2	-15.6	7.4	2.7
Manufacture of tobacco products	C12	21.6	4.9	16.1	21.7	40.4	20.7
Manufacture of textiles	C13	-3.3	0.2	-12.9	-19.6	-13.7	-17.3
Manufacture of wearing apparel	C14	-12.6	-8.8	-5.7	-15.8	-4.5	-2.6
Manufacture of leather and related products	C15	-10.1	-6.5	-10.9	-13.9	-20.6	-22.6
Manufacture of wood and of products of wood and cork, except furniture; manufacture of articles of straw and plaiting materials	C16	-5.5	6.9	-11.8	-25.8	-9.1	-4.4
Manufacture of paper and paper products	C17	-24.4	-46.2	-44.5	-27.0	-4.3	-5.3
Printing and reproduction of recorded media	C18	-0.3	-6.4	-7.8	-6.6	-2.6	-0.8
Manufacture of chemicals and chemical products	C20	-17.6	15.4	-6.6	-15.0	12.5	-20.1
Manufacture of basic pharmaceutical products and pharmaceutical preparations	C21	27.1	29.6	11.2	14.7	6.7	15.6
Manufacture of rubber and plastic products	C22	-14.4	-9.2	-5.6	-18.9	-7.6	0.2
Manufacture of other non-metallic mineral products	C23	-5.1	0.4	2.9	-30.7	-1.4	0.4
Manufacture of basic metals	C24	26.1	-5.5	12.2	0.4	-24.3	14.3
Manufacture of fabricated metal products, except machinery and equipment	C25	3.1	-2.2	-13.0	6.9	-6.3	-8.4
Manufacture of computer, electronic and optical products	C26	22.8	-5.5	21.3	2.4	8.4	22.3
Manufacture of electrical equipment	C27	15.1	11.0	-1.4	-2.4	6.7	39.7
Manufacture of machinery and equipment n.e.c.	C28	9.1	2.9	12.2	12.7	20.8	22.4
Manufacture of motor vehicles, trailers and semi-trailers	C29	-3.2	-20.4	-26.6	2.0	-3.1	5.8
Manufacture of other transport equipment	C30	59.8	-40.1	9.9	6.4	21.3	5.7
Manufacture of furniture	C31	-0.7	10.2	-3.1	-15.0	-4.3	-4.0
Other manufacturing	C32	-21.0	-9.1	16.1	-12.7	7.3	33.8
Repair and installation of machinery and equipment	C33	9.2	-17.1	-11.0	0.6	-3.3	-7.8
Electricity, gas, steam and air conditioning supply	D	14.4	4.2	0.3	-4.0	-14.1	-11.9
Electricity, gas, steam and air conditioning supply	D35	14.4	4.2	0.3	-4.0	-14.1	-11.9

¹Working day adjusted.



Table 3

Industrial Production Indices
(seasonally adjusted, 2005=100)

NACE.BG - 2008 Code	2011									2012			
	IV	V	VI	VII	VIII	IX	X	XI	XII	I	II	III	IV
B_TO_E36	104.0	104.2	101.5	104.1	102.5	103.1	103.2	102.7	101.7	101.3	99.6	101.2	102.7
B	81.0	88.6	76.0	84.6	81.6	84.1	84.2	75.8	90.0	82.2	77.8	81.7	76.2
B05	149.2	142.7	120.5	114.5	120.6	121.2	116.6	123.0	121.2	104.8	108.4	116.3	111.4
B07	60.4	64.0	55.7	80.0	66.3	79.4	76.4	46.1	87.4	73.0	65.6	72.5	73.5
B08	63.6	67.8	63.2	66.9	65.3	58.1	65.7	59.3	62.0	60.2	52.7	63.0	66.5
C	101.0	102.1	100.6	102.7	100.5	102.7	101.8	101.0	98.3	100.2	97.4	101.9	103.3
C10	113.2	109.5	106.6	110.8	108.1	110.1	111.2	108.2	106.7	106.9	114.4	114.7	111.1
C11	85.6	89.4	83.7	88.9	84.7	88.5	85.7	79.0	76.8	78.7	80.6	89.0	85.4
C12	108.6	99.7	107.2	101.1	99.2	94.6	93.3	113.4	105.8	114.6	120.2	125.9	120.6
C13	72.3	74.4	73.7	66.8	77.7	66.3	60.8	63.9	62.7	60.6	58.3	59.1	58.7
C14	68.6	70.9	68.6	71.9	70.2	69.5	67.3	63.8	64.0	66.1	63.0	66.1	65.7
C15	77.8	79.4	74.9	81.2	81.0	80.5	75.1	71.5	69.9	69.9	64.1	65.6	61.2
C16	83.2	80.1	84.6	88.1	86.1	85.6	84.8	82.1	87.9	82.0	73.4	78.0	81.3
C17	148.7	160.9	151.8	148.4	137.0	134.5	115.5	103.8	71.9	87.9	105.7	132.6	138.8
C18	100.8	105.7	103.6	108.2	99.6	100.1	112.2	109.1	100.3	103.6	104.6	107.1	99.9
C20	107.0	115.6	107.6	106.6	110.4	109.2	103.7	98.5	105.6	108.1	103.7	107.8	86.9
C21	95.6	94.3	96.4	97.7	98.0	96.6	102.3	105.0	107.2	97.0	103.4	100.7	106.8
C22	108.8	122.5	113.6	115.4	115.2	118.3	111.0	102.9	103.4	113.0	100.5	107.7	111.1
C23	86.8	85.7	88.0	87.2	86.0	92.1	92.4	84.0	83.9	88.0	60.5	84.7	87.3
C24	101.8	111.0	108.0	110.2	106.0	96.2	108.6	113.6	97.2	111.6	101.1	73.7	115.0
C25	101.3	112.1	108.0	111.9	100.5	113.0	130.5	114.2	89.1	99.3	95.9	100.7	93.8
C26	114.9	130.8	128.1	142.9	121.6	115.4	120.4	133.9	110.6	149.7	134.0	131.5	141.1
C27	145.9	151.5	152.9	158.9	153.7	142.7	145.3	158.1	153.9	150.7	154.8	168.9	184.4
C28	113.0	126.2	122.7	125.1	117.7	125.4	122.6	124.7	116.1	131.9	133.5	139.9	137.0
C29	130.7	150.7	137.8	153.0	153.5	128.8	149.1	143.5	127.5	127.4	144.3	142.0	137.2
C30	96.4	112.4	77.8	68.3	47.7	78.7	62.8	86.6	54.1	98.7	88.9	98.9	96.6
C31	106.5	108.1	105.7	113.0	117.1	112.7	114.9	109.9	109.2	105.3	94.1	101.1	101.4
C32	128.0	166.7	163.8	169.1	161.6	141.8	140.9	133.8	131.6	187.8	135.8	163.0	170.8
C33	106.6	92.3	89.6	79.9	94.8	131.5	99.0	112.4	102.9	102.4	111.9	98.5	98.4
D	124.7	118.8	114.1	123.3	118.5	110.1	117.8	120.9	116.2	114.7	116.6	105.4	111.7
D35	124.7	118.8	114.1	123.3	118.5	110.1	117.8	120.9	116.2	114.7	116.6	105.4	111.7



Table 4

Industrial Production Indices
(working day adjusted, 2005=100)

NACE.BG - 2008 Code	2009	2010	2011									2012			
	IV	IV	IV	V	VI	VII	VIII	IX	X	XI	XII	I	II	III	IV
B_TO_E36	92.6	91.4	100.1	101.0	104.1	108.8	101.1	103.8	108.5	108.3	103.9	93.2	91.5	103.1	100.4
B	74.2	64.9	77.9	85.2	73.0	83.9	79.5	86.4	94.1	82.0	96.0	76.9	72.7	80.4	73.9
B05	77.8	51.2	121.1	126.6	104.9	109.7	112.2	125.2	140.9	146.8	131.2	108.8	106.4	113.5	91.9
B07	72.0	86.1	65.7	67.0	58.3	78.8	65.9	77.4	79.6	46.6	90.6	73.0	65.6	72.5	73.5
B08	85.3	58.1	62.3	72.8	68.2	70.2	68.9	62.0	74.4	65.1	67.0	42.2	39.6	58.9	66.4
C	92.1	93.0	98.4	102.3	108.6	110.4	101.1	107.2	108.6	106.2	95.7	85.1	83.4	103.2	102.5
C10	107.4	105.0	108.6	105.6	109.5	112.5	112.4	120.1	122.8	115.7	112.3	89.3	98.7	113.3	106.8
C11	98.1	87.2	81.6	94.9	99.9	110.1	108.3	95.5	77.8	75.1	87.2	49.0	52.6	83.8	83.8
C12	79.9	71.5	90.7	102.2	123.0	116.2	115.6	104.1	107.5	136.9	103.7	91.8	89.9	118.1	109.5
C13	79.8	75.6	78.4	81.2	86.1	74.6	63.6	63.7	61.2	67.4	53.3	48.4	55.7	65.1	64.8
C14	68.9	61.4	61.3	64.4	71.5	83.5	70.4	68.5	68.5	63.9	64.5	65.6	60.3	65.3	59.7
C15	65.9	66.0	66.0	69.2	79.6	95.2	78.6	84.3	77.7	70.0	65.2	68.6	63.6	67.3	51.1
C16	59.5	81.4	82.1	77.3	91.2	96.2	89.9	93.2	93.6	87.8	83.4	62.9	56.8	74.5	78.5
C17	74.6	116.3	150.9	161.6	166.1	157.1	139.1	139.9	112.9	101.9	69.5	80.7	96.2	138.1	142.9
C18	104.3	109.8	95.2	99.6	108.3	108.3	103.9	106.2	124.6	118.1	113.3	85.2	91.3	101.1	94.4
C20	76.7	90.3	111.7	113.3	112.7	108.0	104.6	110.2	100.9	101.8	104.3	100.3	97.1	119.0	89.3
C21	73.8	81.2	91.7	90.8	109.5	84.1	97.6	95.5	114.7	115.7	110.0	75.6	103.6	105.1	106.0
C22	102.7	105.3	107.9	115.7	122.9	127.6	117.9	124.6	124.4	109.3	97.9	90.6	83.9	108.7	108.1
C23	96.6	77.4	89.4	92.8	99.9	95.6	90.1	102.1	103.8	88.5	72.4	60.5	48.3	82.4	89.8
C24	96.7	102.2	104.3	119.3	108.6	120.1	101.5	88.1	118.1	117.3	76.1	105.8	97.0	83.6	119.2
C25	84.6	94.9	102.5	107.5	116.6	116.8	100.5	116.4	129.4	120.2	105.6	70.9	84.9	103.5	93.9
C26	87.8	109.1	112.6	123.2	134.4	142.6	110.8	123.2	122.3	139.4	138.1	128.0	114.7	135.4	137.7
C27	123.4	131.6	133.5	140.0	158.8	170.8	139.8	150.9	163.8	181.5	147.4	136.1	142.8	170.1	186.5
C28	100.1	100.7	109.6	123.3	135.7	136.1	108.6	129.9	131.3	132.5	112.1	111.3	126.4	149.1	134.2
C29	97.5	153.1	132.6	155.7	149.3	149.8	137.2	127.3	157.3	158.5	120.1	114.7	133.6	150.0	140.3
C30	92.2	67.1	83.5	171.3	81.5	74.7	49.5	86.3	52.2	81.5	59.4	57.7	70.3	108.4	88.3
C31	92.2	86.4	102.0	105.0	110.4	117.0	118.5	115.2	126.2	119.7	114.1	86.8	81.2	102.0	97.9
C32	133.3	138.4	123.9	164.7	186.0	169.1	164.4	152.6	163.0	142.8	121.7	151.8	117.1	160.3	165.8
C33	89.1	105.0	97.4	87.4	93.8	81.7	93.3	141.3	102.7	121.7	140.7	70.2	93.9	98.1	89.8
D	101.0	97.2	117.7	102.3	100.5	115.3	108.1	97.2	113.4	129.3	140.9	131.7	129.7	114.7	103.7
D35	101.0	97.2	117.7	102.3	100.5	115.3	108.1	97.2	113.4	129.3	140.9	131.7	129.7	114.7	103.7