

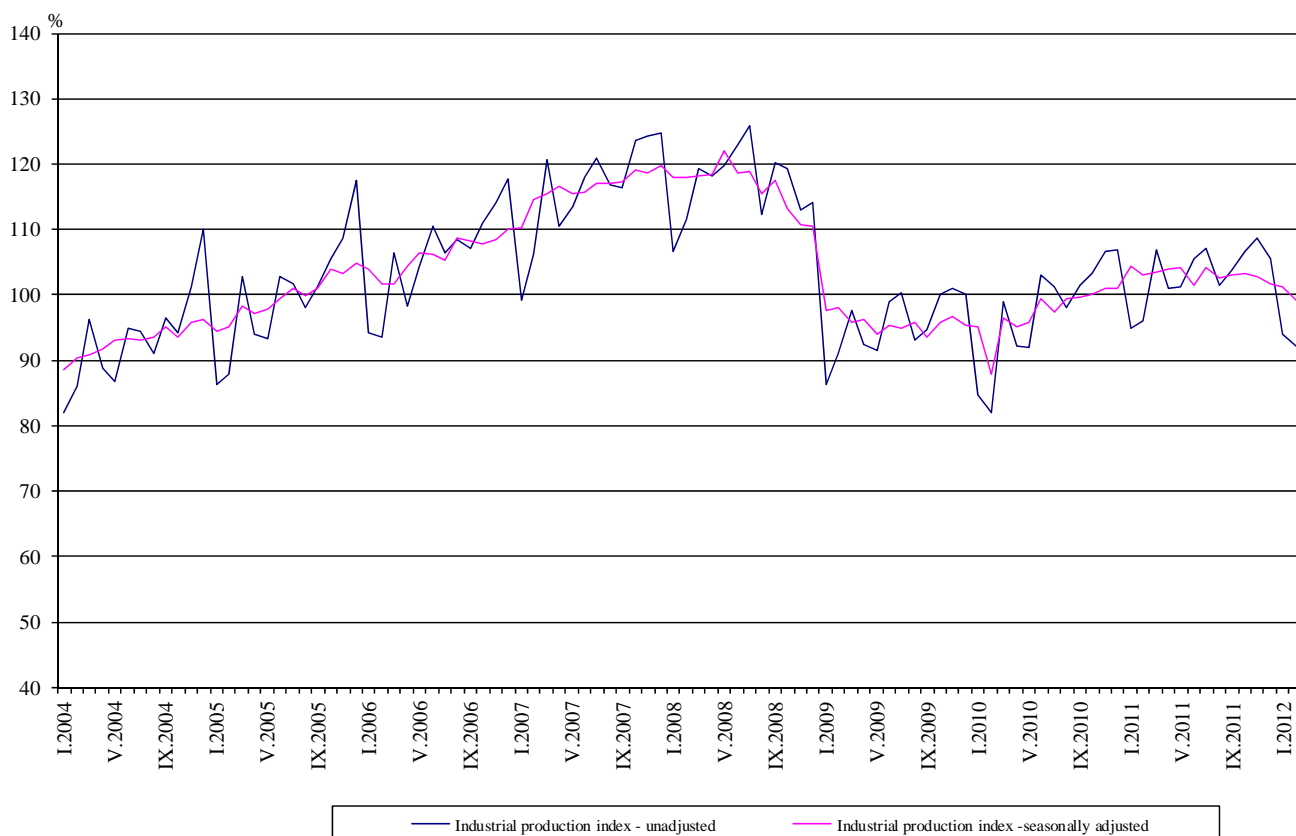


## Industrial Production Indices in February 2012<sup>1</sup>

The preliminary data showed that the Industrial Production Index<sup>2</sup>, seasonally adjusted<sup>3,5</sup>, decreased by 2.1% in February 2012 as compared to January 2012.

In February 2012 working day adjusted<sup>4,5</sup> Industrial Production Index fell by 5.5% as compared to the same month of 2011.

**Figure 1. Industrial Production Indices (2005=100)**



<sup>1</sup>The data for February 2012 are preliminary.

<sup>2</sup> Monthly Industrial Production and Industrial turnover indices measure changes in **production and turnover values** of industrial enterprises. This information can be used to assess the current economic development and for short-term forecasts. Indices do not measure the actual production level; it aims to measure the average change in value of production between two points of time.

Indices are compiled on the base of information collected through representative sampling survey on industrial enterprises. The sample covers enterprises with annual turnover more than 97% of total turnover in industry.

Industrial production indices are calculated at constant base year (2005), i.e. they are weighted with the structure of the value added at factor costs in the base year.

<sup>3</sup> Seasonal adjustment is a statistical method, which eliminates the seasonal component of time series and it is particularly suitable for long-term comparisons and analysis of the data.

<sup>4</sup> Working day adjustment is an adjustment for variations caused by calendar effects, different number of calendar and working days in the months, national holidays as well as outliers (for example the presence of more non-working days in May could contribute to the decline in the production in some activities).

<sup>5</sup> The seasonally and working day adjusted data on Industrial production index for the period 2000-2010 are published on NSI web-site:

<http://www.nsi.bg/otrasalen.php?otr=46>

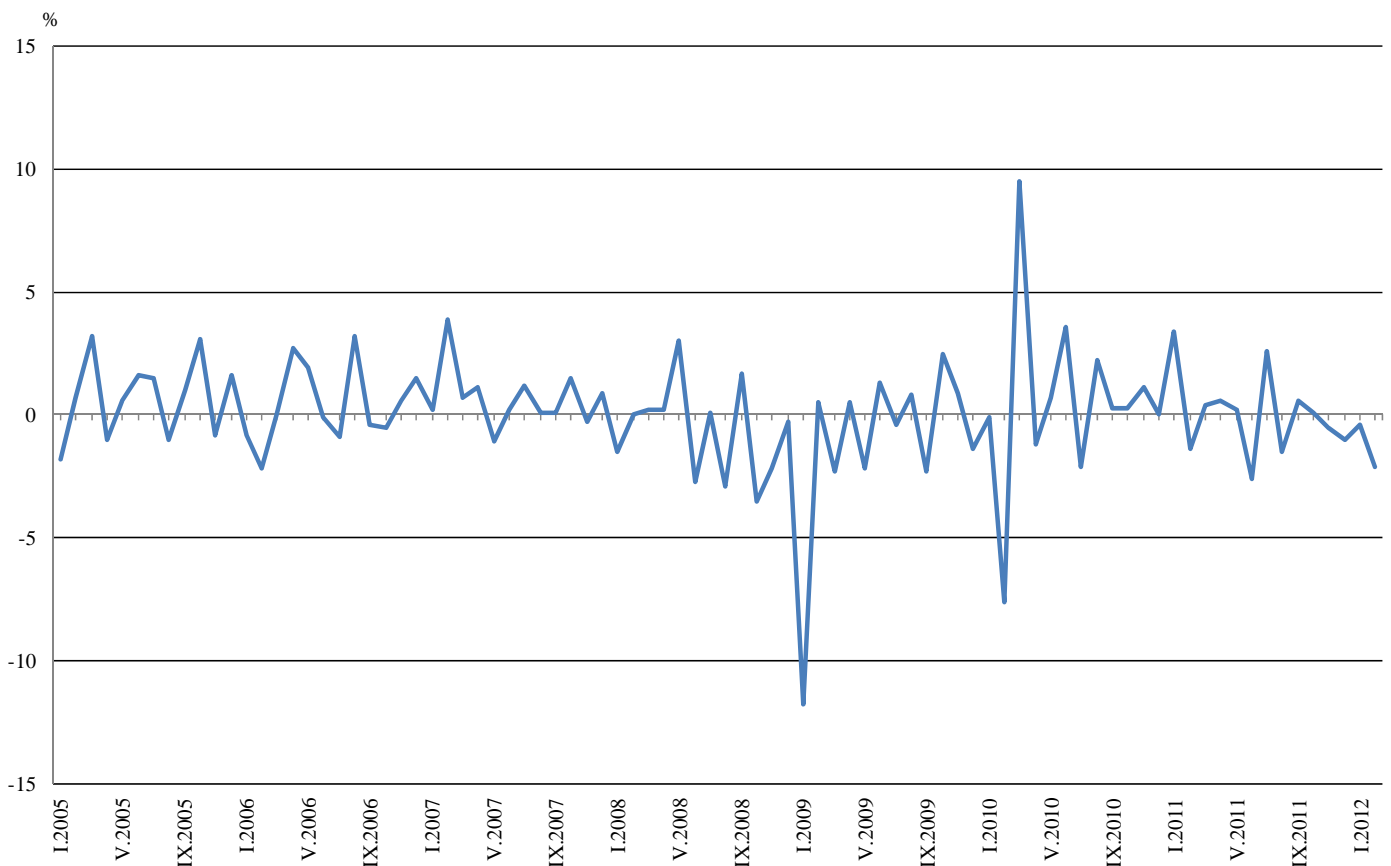


## Monthly comparisons

In February 2012 as compared to January 2012, the seasonally adjusted Industrial Production Index in the mining and quarrying industry decreased by 5.6%, in the manufacturing by 3.7%, while in the electricity, gas, steam and air conditioning supply an increase by 3.6% was registered.

The most significant decreases of production in the manufacturing were seen in the manufacture of other non-metallic mineral products by 32.4%, in the manufacture of wood and of products of wood and cork, except furniture; manufacture of articles of straw and plaiting materials by 11.1%, in the manufacture of rubber and plastic products by 10.6%, in the manufacture of basic metals by 7.3%. There was increase in the manufacture of paper and paper products by 16.8%, in the manufacture of food products by 6.6%, in the manufacture of basic pharmaceutical products and pharmaceutical preparations by 4.9%.

**Figure 2. Percentage changes of Industrial Production Indices compared to the previous month (Seasonally adjusted)**



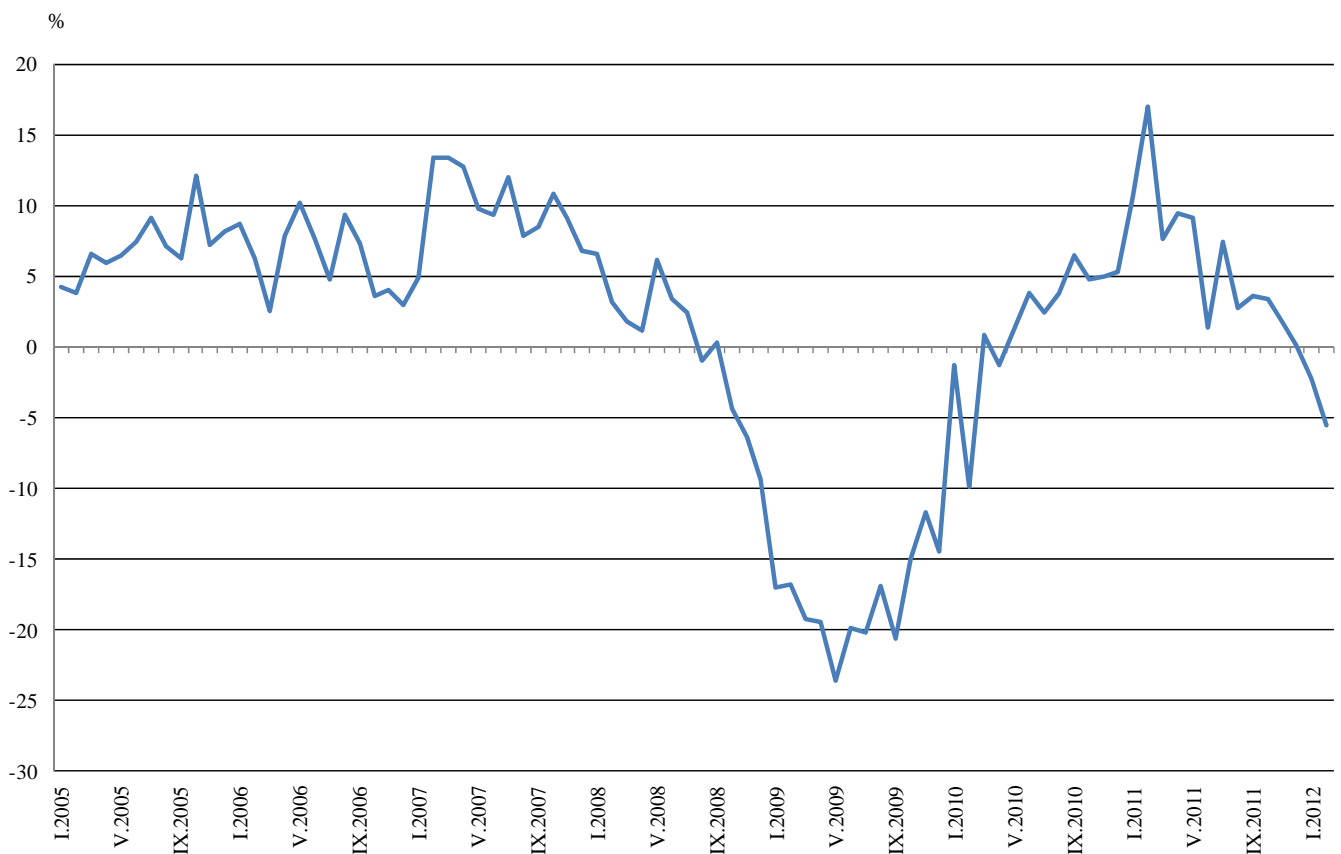


### Annual comparisons

On annual bases in February 2012 Industrial Production Index, calculated from working day adjusted data in the manufacturing, decreased by 7.5% and in the electricity, gas, steam and air conditioning supply by 3.0%, while in the mining and quarrying industry an increase by 3.1% was seen.

Decreases were registered in the production of intermediate goods by 9.2% and in the production of energy by 8.2%, while the production of investment goods increased by 8.8%.

**Figure 3. Percentage changes of Industrial Production Indices compared to the same month of the previous year (Working day adjusted)**



The final data on Industrial Production and Turnover Indices for January 2012 are published on NSI website: <http://www.nsi.bg/otrasalen.php?otr=46>



Percentage changes of Industrial Production Indices compared to the previous month\*

Economic Activities	NACE.BG - 2008 Code	2011				2012	
		IX	X	XI	XII	I	II
<b>Industry</b>	<b>B_TO_E36</b>	<b>0.6</b>	<b>0.1</b>	<b>-0.5</b>	<b>-1.0</b>	<b>-0.4</b>	<b>-2.1</b>
<b>Mining and quarrying</b>	<b>B</b>	<b>3.1</b>	<b>0.1</b>	<b>-10.0</b>	<b>18.7</b>	<b>-8.7</b>	<b>-5.6</b>
of which:							
Mining of coal and lignite	B05	0.5	-3.8	5.5	-1.5	-13.5	3.0
Mining of metal ores	B07	19.8	-3.8	-39.7	89.6	-16.5	-10.3
Other mining and quarrying	B08	-11.0	13.1	-9.7	4.6	-2.9	-15.1
<b>Manufacturing</b>	<b>C</b>	<b>2.2</b>	<b>-0.9</b>	<b>-0.8</b>	<b>-2.7</b>	<b>1.9</b>	<b>-3.7</b>
of which:							
Manufacture of food products	C10	1.9	1.0	-2.7	-1.4	0.2	6.6
Manufacture of beverages	C11	4.5	-3.2	-7.8	-2.8	2.5	0.5
Manufacture of tobacco products	C12	-4.6	-1.4	21.5	-6.7	8.3	1.7
Manufacture of textiles	C13	-14.7	-8.3	5.1	-1.9	-3.3	-5.4
Manufacture of wearing apparel	C14	-1.0	-3.2	-5.2	0.3	3.3	-6.1
Manufacture of leather and related products	C15	-0.6	-6.7	-4.8	-2.2	0.0	-7.2
Manufacture of wood and of products of wood and cork, except furniture; manufacture of articles of straw and plaiting materials	C16	-0.6	-0.9	-3.2	7.1	-6.7	-11.1
Manufacture of paper and paper products	C17	-1.8	-14.1	-10.1	-30.7	22.3	16.8
Printing and reproduction of recorded media	C18	0.5	12.1	-2.8	-8.1	3.3	0.3
Manufacture of chemicals and chemical products	C20	-1.1	-5.0	-5.0	7.2	2.4	-4.7
Manufacture of basic pharmaceutical products and pharmaceutical preparations	C21	-1.4	5.9	2.6	2.1	-9.5	4.9
Manufacture of rubber and plastic products	C22	2.7	-6.2	-7.3	0.5	9.3	-10.6
Manufacture of other non-metallic mineral products	C23	7.1	0.3	-9.1	-0.1	4.9	-32.4
Manufacture of basic metals	C24	-9.2	12.9	4.6	-14.4	14.8	-7.3
Manufacture of fabricated metal products, except machinery and equipment	C25	12.4	15.5	-12.5	-22.0	11.4	-4.3
Manufacture of computer, electronic and optical products	C26	-5.1	4.3	11.2	-17.4	35.4	-10.2
Manufacture of electrical equipment	C27	-7.2	1.8	8.8	-2.7	-2.1	0.7
Manufacture of machinery and equipment n.e.c.	C28	6.5	-2.2	1.7	-6.9	13.6	-0.3
Manufacture of motor vehicles, trailers and semi-trailers	C29	-16.1	15.8	-3.8	-11.1	-0.1	12.8
Manufacture of other transport equipment	C30	65.0	-20.2	37.9	-37.5	82.4	-12.2
Manufacture of furniture	C31	-3.8	2.0	-4.4	-0.6	-3.6	-9.1
Other manufacturing	C32	-12.3	-0.6	-5.0	-1.6	42.7	-28.5
Repair and installation of machinery and equipment	C32	38.7	-24.7	13.5	-8.5	-0.5	10.2
<b>Electricity, gas, steam and air conditioning supply</b>	<b>D</b>	<b>-7.1</b>	<b>7.0</b>	<b>2.6</b>	<b>-3.9</b>	<b>-1.3</b>	<b>3.6</b>
Electricity, gas, steam and air conditioning supply	D35	-7.1	7.0	2.6	-3.9	-1.3	3.6

\* Seasonally adjusted.



**Percentage changes of Industrial Production Indices compared to the same month  
of the previous year \***

Economic Activities	NACE.BG - 2008 Code	2011				2012	
		IX	X	XI	XII	I	II
<b>Industry</b>	<b>B_TO_E36</b>	<b>3.6</b>	<b>3.4</b>	<b>1.7</b>	<b>0.1</b>	<b>-2.2</b>	<b>-5.5</b>
<b>Mining and quarrying</b>	<b>B</b>	<b>11.1</b>	<b>12.0</b>	<b>-7.2</b>	<b>23.4</b>	<b>0.0</b>	<b>3.1</b>
of which:							
Mining of coal and lignite	B05	21.7	7.5	18.2	22.3	-5.8	-5.7
Mining of metal ores	B07	5.9	18.1	-43.1	27.8	1.0	21.1
Other mining and quarrying	B08	-18.0	3.0	-11.5	-5.4	1.9	-27.6
<b>Manufacturing</b>	<b>C</b>	<b>3.8</b>	<b>2.4</b>	<b>-1.0</b>	<b>-2.9</b>	<b>-2.9</b>	<b>-7.5</b>
of which:							
Manufacture of food products	C10	-9.0	-3.2	-9.6	-7.7	-9.9	-3.8
Manufacture of beverages	C11	0.5	7.0	-14.1	-10.5	-14.2	-15.7
Manufacture of tobacco products	C12	-4.3	-7.6	21.6	4.9	16.1	22.9
Manufacture of textiles	C13	-3.6	-14.4	-3.3	0.2	-12.9	-20.9
Manufacture of wearing apparel	C14	-1.0	-6.8	-12.6	-8.8	-5.7	-16.1
Manufacture of leather and related products	C15	-0.6	-5.2	-10.1	-6.5	-10.9	-15.2
Manufacture of wood and of products of wood and cork, except furniture; manufacture of articles of straw and plaiting materials	C16	-2.4	-7.4	-5.5	6.9	-11.8	-25.5
Manufacture of paper and paper products	C17	-3.2	1.3	-24.4	-46.2	-44.5	-28.2
Printing and reproduction of recorded media	C18	-13.9	2.0	-0.3	-6.4	-7.8	-7.2
Manufacture of chemicals and chemical products	C20	6.8	0.4	-17.6	15.4	-6.6	-15.5
Manufacture of basic pharmaceutical products and pharmaceutical preparations	C21	4.5	15.6	27.1	29.6	11.2	11.4
Manufacture of rubber and plastic products	C22	-2.5	-2.1	-14.4	-9.2	-5.6	-18.5
Manufacture of other non-metallic mineral products	C23	11.7	16.8	-5.1	0.4	2.9	-31.7
Manufacture of basic metals	C24	-7.3	8.7	26.1	-5.5	12.2	2.6
Manufacture of fabricated metal products, except machinery and equipment	C25	8.5	27.0	3.1	-2.2	-13.0	5.5
Manufacture of computer, electronic and optical products	C26	9.6	3.7	22.8	-5.5	21.3	2.8
Manufacture of electrical equipment	C27	-7.8	-4.8	15.1	11.0	-1.4	-3.3
Manufacture of machinery and equipment n.e.c.	C28	12.9	5.1	9.1	2.9	12.2	11.6
Manufacture of motor vehicles, trailers and semi-trailers	C29	-16.3	-8.4	-3.2	-20.4	-26.6	1.3
Manufacture of other transport equipment	C30	20.0	7.4	59.8	-40.1	9.9	5.3
Manufacture of furniture	C31	5.0	10.7	-0.7	10.2	-3.1	-13.4
Other manufacturing	C32	5.0	-0.2	-21.0	-9.1	16.1	-13.6
Repair and installation of machinery and equipment	C33	40.5	-16.4	9.2	-17.1	-11.0	1.2
<b>Electricity, gas, steam and air conditioning supply</b>	<b>D</b>	<b>-1.1</b>	<b>2.6</b>	<b>14.4</b>	<b>4.2</b>	<b>0.3</b>	<b>-3.0</b>
Electricity, gas, steam and air conditioning supply	D35	-1.1	2.6	14.4	4.2	0.3	-3.0

\* Working day adjusted.



Table 3

**Industrial Production Indices**  
(Seasonally adjusted, 2005=100)

NACE.BG - 2008 Code	2011											2012	
	II	III	IV	V	VI	VII	VIII	IX	X	XI	XII	I	II
<b>B_TO_E36</b>	<b>103.0</b>	<b>103.4</b>	<b>104.0</b>	<b>104.2</b>	<b>101.5</b>	<b>104.1</b>	<b>102.5</b>	<b>103.1</b>	<b>103.2</b>	<b>102.7</b>	<b>101.7</b>	<b>101.3</b>	<b>99.2</b>
<b>B</b>	<b>74.7</b>	<b>79.3</b>	<b>81.0</b>	<b>88.6</b>	<b>76.0</b>	<b>84.6</b>	<b>81.6</b>	<b>84.1</b>	<b>84.2</b>	<b>75.8</b>	<b>90.0</b>	<b>82.2</b>	<b>77.6</b>
<b>B05</b>	106.3	110.9	149.2	142.7	120.5	114.5	120.6	121.2	116.6	123.0	121.2	104.8	107.9
<b>B07</b>	59.4	68.8	60.4	64.0	55.7	80.0	66.3	79.4	76.4	46.1	87.4	73.0	65.5
<b>B08</b>	66.9	56.1	63.6	67.8	63.2	66.9	65.3	58.1	65.7	59.3	62.0	60.2	51.1
<b>C</b>	<b>101.2</b>	<b>102.1</b>	<b>101.0</b>	<b>102.1</b>	<b>100.6</b>	<b>102.7</b>	<b>100.5</b>	<b>102.7</b>	<b>101.8</b>	<b>101.0</b>	<b>98.3</b>	<b>100.2</b>	<b>96.5</b>
<b>C10</b>	118.9	111.3	113.2	109.5	106.6	110.8	108.1	110.1	111.2	108.2	106.7	106.9	114.0
<b>C11</b>	95.0	85.5	85.6	89.4	83.7	88.9	84.7	88.5	85.7	79.0	76.8	78.7	79.1
<b>C12</b>	110.8	100.8	108.6	99.7	107.2	101.1	99.2	94.6	93.3	113.4	105.8	114.6	116.5
<b>C13</b>	71.0	67.6	72.3	74.4	73.7	66.8	77.7	66.3	60.8	63.9	62.7	60.6	57.3
<b>C14</b>	71.8	69.5	68.6	70.9	68.6	71.9	70.2	69.5	67.3	63.8	64.0	66.1	62.1
<b>C15</b>	73.0	79.6	77.8	79.4	74.9	81.2	81.0	80.5	75.1	71.5	69.9	69.9	64.9
<b>C16</b>	88.7	82.6	83.2	80.1	84.6	88.1	86.1	85.6	84.8	82.1	87.9	82.0	72.9
<b>C17</b>	145.0	141.7	148.7	160.9	151.8	148.4	137.0	134.5	115.5	103.8	71.9	87.9	102.7
<b>C18</b>	112.0	110.4	100.8	105.7	103.6	108.2	99.6	100.1	112.2	109.1	100.3	103.6	103.9
<b>C20</b>	120.9	96.8	107.0	115.6	107.6	106.6	110.4	109.2	103.7	98.5	105.6	108.1	103.0
<b>C21</b>	90.4	93.1	95.6	94.3	96.4	97.7	98.0	96.6	102.3	105.0	107.2	97.0	101.8
<b>C22</b>	120.6	115.9	108.8	122.5	113.6	115.4	115.2	118.3	111.0	102.9	103.4	113.0	101.0
<b>C23</b>	86.9	84.9	86.8	85.7	88.0	87.2	86.0	92.1	92.4	84.0	83.9	88.0	59.5
<b>C24</b>	98.7	101.0	101.8	111.0	108.0	110.2	106.0	96.2	108.6	113.6	97.2	111.6	103.4
<b>C25</b>	88.8	106.8	101.3	112.1	108.0	111.9	100.5	113.0	130.5	114.2	89.1	99.3	95.0
<b>C26</b>	130.3	120.9	114.9	130.8	128.1	142.9	121.6	115.4	120.4	133.9	110.6	149.7	134.4
<b>C27</b>	156.4	155.8	145.9	151.5	152.9	158.9	153.7	142.7	145.3	158.1	153.9	150.7	151.8
<b>C28</b>	119.1	118.2	113.0	126.2	122.7	125.1	117.7	125.4	122.6	124.7	116.1	131.9	131.5
<b>C29</b>	142.1	146.0	130.7	150.7	137.8	153.0	153.5	128.8	149.1	143.5	127.5	127.4	143.7
<b>C30</b>	90.6	92.3	96.4	112.4	77.8	68.3	47.7	78.7	62.8	86.6	54.1	98.7	86.7
<b>C31</b>	107.4	104.7	106.5	108.1	105.7	113.0	117.1	112.7	114.9	109.9	109.2	105.3	95.7
<b>C32</b>	153.5	152.1	128.0	166.7	163.8	169.1	161.6	141.8	140.9	133.8	131.6	187.8	134.3
<b>C33</b>	113.2	101.2	106.6	92.3	89.6	79.9	94.8	131.5	99.0	112.4	102.9	102.4	112.8
<b>D</b>	<b>123.5</b>	<b>121.6</b>	<b>124.7</b>	<b>118.8</b>	<b>114.1</b>	<b>123.3</b>	<b>118.5</b>	<b>110.1</b>	<b>117.8</b>	<b>120.9</b>	<b>116.2</b>	<b>114.7</b>	<b>118.8</b>
<b>D35</b>	123.5	121.6	124.7	118.8	114.1	123.3	118.5	110.1	117.8	120.9	116.2	114.7	118.8



**Industrial Production Indices**  
(Working day adjusted, 2005=100)

NACE.BG - 2008 Code	2009	2010	2011												2012	
	II	II	II	III	IV	V	VI	VII	VIII	IX	X	XI	XII	I	II	
<b>B_TO_E36</b>	<b>91.5</b>	<b>82.4</b>	<b>96.4</b>	<b>106.4</b>	<b>100.1</b>	<b>101.0</b>	<b>104.1</b>	<b>108.8</b>	<b>101.1</b>	<b>103.8</b>	<b>108.5</b>	<b>108.3</b>	<b>103.9</b>	<b>93.2</b>	<b>91.1</b>	
<b>B</b>	<b>70.1</b>	<b>71.2</b>	<b>70.4</b>	<b>77.9</b>	<b>77.9</b>	<b>85.2</b>	<b>73.0</b>	<b>83.9</b>	<b>79.5</b>	<b>86.4</b>	<b>94.1</b>	<b>82.0</b>	<b>96.0</b>	<b>76.9</b>	<b>72.6</b>	
<b>B05</b>	101.2	100.9	112.6	109.6	121.1	126.6	104.9	109.7	112.2	125.2	140.9	146.8	131.2	108.8	106.2	
<b>B07</b>	55.8	68.0	54.1	67.5	65.7	67.0	58.3	78.8	65.9	77.4	79.6	46.6	90.6	73.0	65.5	
<b>B08</b>	81.1	54.1	53.2	52.7	62.3	72.8	68.2	70.2	68.9	62.0	74.4	65.1	67.0	42.2	38.5	
<b>C</b>	<b>85.6</b>	<b>72.9</b>	<b>89.6</b>	<b>103.1</b>	<b>98.4</b>	<b>102.3</b>	<b>108.6</b>	<b>110.4</b>	<b>101.1</b>	<b>107.2</b>	<b>108.6</b>	<b>106.2</b>	<b>95.7</b>	<b>85.1</b>	<b>82.9</b>	
<b>C10</b>	103.2	95.6	102.4	109.2	108.6	105.6	109.5	112.5	112.4	120.1	122.8	115.7	112.3	89.3	98.5	
<b>C11</b>	68.4	51.3	62.3	78.0	81.6	94.9	99.9	110.1	108.3	95.5	77.8	75.1	87.2	49.0	52.5	
<b>C12</b>	51.7	48.1	73.9	84.1	90.7	102.2	123.0	116.2	115.6	104.1	107.5	136.9	103.7	91.8	90.8	
<b>C13</b>	84.9	56.7	69.3	75.4	78.4	81.2	86.1	74.6	63.6	63.7	61.2	67.4	53.3	48.4	54.8	
<b>C14</b>	78.9	64.5	71.6	68.4	61.3	64.4	71.5	83.5	70.4	68.5	68.5	63.9	64.5	65.6	60.1	
<b>C15</b>	85.4	86.2	73.9	84.8	66.0	69.2	79.6	95.2	78.6	84.3	77.7	70.0	65.2	68.6	62.7	
<b>C16</b>	60.5	61.0	76.6	82.0	82.1	77.3	91.2	96.2	89.9	93.2	93.6	87.8	83.4	62.9	57.1	
<b>C17</b>	75.5	98.5	131.8	144.3	150.9	161.6	166.1	157.1	139.1	139.9	112.9	101.9	69.5	80.7	94.6	
<b>C18</b>	109.6	93.5	97.7	103.8	95.2	99.6	108.3	108.3	103.9	106.2	124.6	118.1	113.3	85.2	90.7	
<b>C20</b>	87.9	75.2	114.2	105.8	111.7	113.3	112.7	108.0	104.6	110.2	100.9	101.8	104.3	100.3	96.5	
<b>C21</b>	74.8	84.5	90.3	98.5	91.7	90.8	109.5	84.1	97.6	95.5	114.7	115.7	110.0	75.6	100.6	
<b>C22</b>	94.5	80.4	103.5	117.7	107.9	115.7	122.9	127.6	117.9	124.6	124.4	109.3	97.9	90.6	84.4	
<b>C23</b>	85.9	52.8	69.7	83.6	89.4	92.8	99.9	95.6	90.1	102.1	103.8	88.5	72.4	60.5	47.6	
<b>C24</b>	97.5	98.9	96.6	110.4	104.3	119.3	108.6	120.1	101.5	88.1	118.1	117.3	76.1	105.8	99.1	
<b>C25</b>	94.6	90.1	79.4	110.4	102.5	107.5	116.6	116.8	100.5	116.4	129.4	120.2	105.6	70.9	83.8	
<b>C26</b>	82.5	89.1	112.0	124.9	112.6	123.2	134.4	142.6	110.8	123.2	122.3	139.4	138.1	128.0	115.1	
<b>C27</b>	126.6	123.2	146.3	159.4	133.5	140.0	158.8	170.8	139.8	150.9	163.8	181.5	147.4	136.1	141.5	
<b>C28</b>	104.0	89.4	112.2	123.4	109.6	123.3	135.7	136.1	108.6	129.9	131.3	132.5	112.1	111.3	125.2	
<b>C29</b>	70.4	146.9	131.0	154.8	132.6	155.7	149.3	149.8	137.2	127.3	157.3	158.5	120.1	114.7	132.7	
<b>C30</b>	71.3	59.2	66.1	89.4	83.5	171.3	81.5	74.7	49.5	86.3	52.2	81.5	59.4	57.7	69.6	
<b>C31</b>	87.7	80.1	95.5	106.6	102.0	105.0	110.4	117.0	118.5	115.2	126.2	119.7	114.1	86.8	82.7	
<b>C32</b>	120.8	114.5	134.2	149.4	123.9	164.7	186.0	169.1	164.4	152.6	163.0	142.8	121.7	151.8	115.9	
<b>C33</b>	79.1	89.8	93.3	101.4	97.4	87.4	93.8	81.7	93.3	141.3	102.7	121.7	140.7	70.2	94.4	
<b>D</b>	<b>123.0</b>	<b>121.6</b>	<b>135.1</b>	<b>133.5</b>	<b>117.7</b>	<b>102.3</b>	<b>100.5</b>	<b>115.3</b>	<b>108.1</b>	<b>97.2</b>	<b>113.4</b>	<b>129.3</b>	<b>140.9</b>	<b>131.7</b>	<b>131.1</b>	
<b>D35</b>	123.0	121.6	135.1	133.5	117.7	102.3	100.5	115.3	108.1	97.2	113.4	129.3	140.9	131.7	131.1	