

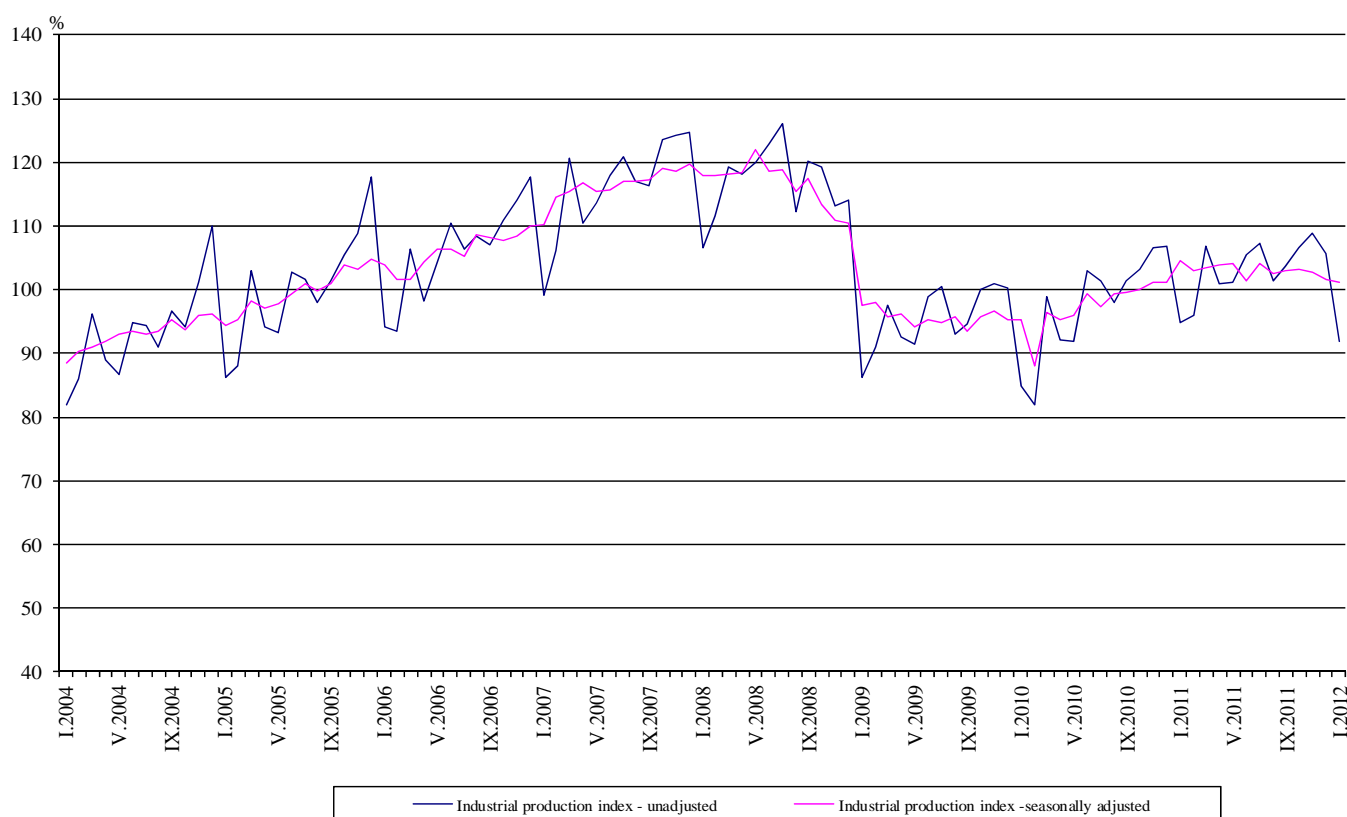


## Industrial Production Indices in January 2012<sup>1</sup>

The preliminary data showed that the Industrial Production Index<sup>2</sup>, seasonally adjusted<sup>3</sup>, decreased by 0.6% in January 2012 as compared to December 2011.

In January 2012 working day adjusted<sup>4</sup> Industrial Production Index fell by 3.6% as compared to the same month of 2011.

**Figure 1. Industrial Production Indices (2005=100)**



<sup>1</sup>January 2012 data are preliminary.

<sup>2</sup> Monthly Industrial Production and Industrial turnover indices measure changes in **production and turnover values** of industrial enterprises. This information can be used to assess the current economic development and for short-term forecasts. Indices do not measure the actual production level, it aims to measure the average change in value of production between two points of time

Indices are compiled on the base of information collected through representative sampling survey on industrial enterprises. The sample covers enterprises with annual turnover more than 97% of total turnover in industry.

Industrial production indices are calculated at constant base year (2005) that is to say they are weighted with the structure of the value added at factor costs in the base year.

<sup>3</sup> **Seasonal adjustment** is a statistical method, which eliminates the seasonal component of time series and it is particularly suitable for long-term comparisons and analysis of the data.

<sup>4</sup> **Working day adjustment** is an adjustment for variations caused by calendar effects, different number of calendar and working days in the months, national holidays and outliers (for example the presence of more non-working days in May could contribute to the decline in the production in some activities).

The seasonally and working day adjusted data on Industrial production index for the period 2000-2010 can be found in NSI internet web-site: (<http://www.nsi.bg/otrasalen.php?otr=46>).

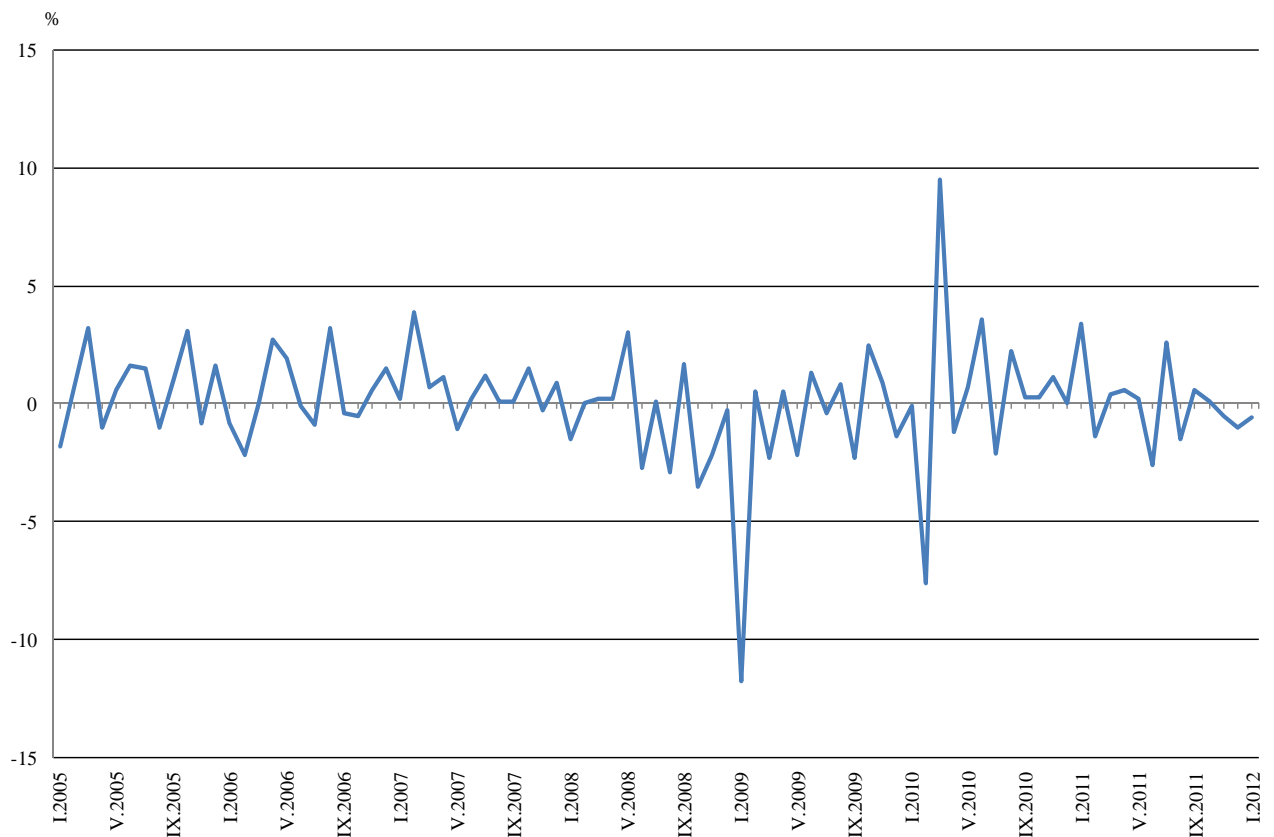


### Monthly comparisons

In January 2012 as compared to December 2011, the seasonally adjusted Industrial Production Index in the mining and quarrying industry decreased by 7.6%, in the electricity, gas, steam and air conditioning supply by 4.3%, while in the manufacturing an increase by 2.0% was registered.

The most significant increases of production in the manufacturing were seen in the manufacture of paper and paper products by 20.2%, in the manufacture of basic metals by 14.4%, in the manufacture of fabricated metal products, except machinery and equipment by 13.1%, in the manufacture of rubber and plastic products by 12.1%. There was decrease in the manufacture of basic pharmaceutical products and pharmaceutical preparations by 8.5%, in the manufacture of wood and of products of wood and cork, except furniture; manufacture of articles of straw and plaiting materials by 7.2%, in the manufacture of electrical equipment by 6.3%.

**Figure 2. Percentage changes of Industrial Production Indices compared to the previous month (seasonally adjusted)**



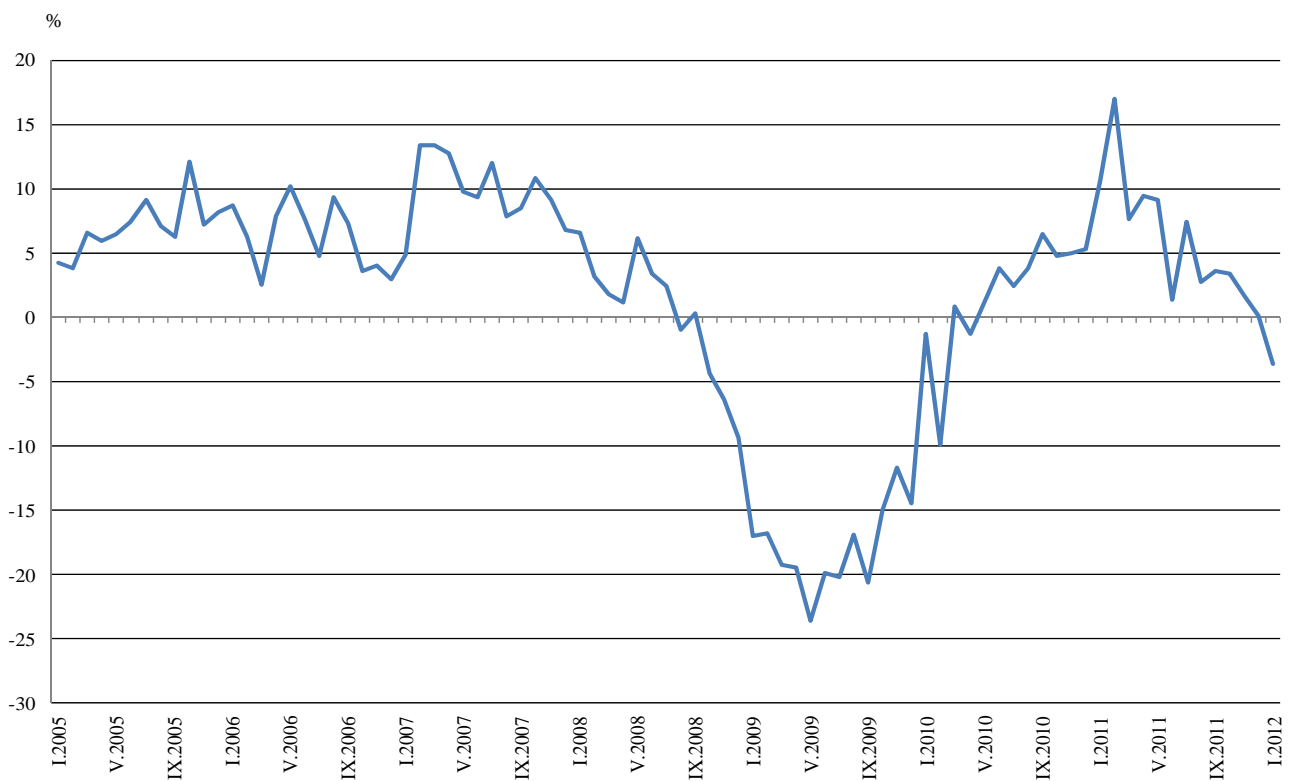


### Annual comparisons

On annual bases in January 2012 Industrial Production Index, calculated from working day adjusted data in the manufacturing decreased by 4.1% and in the electricity, gas, steam and air conditioning supply by 3.1%, while in the mining and quarrying industry an increase by 0.8% was seen.

Decreases were registered in the production of investment goods by 7.6%, in the production of energy by 4.2% and in the production of intermediate goods by 2.4%.

**Figure 3. Percentage changes of Industrial Production Indices compared to the same month of the previous year**  
(working day adjusted)



The final data on Industrial Production and Turnover Indices for December 2011 can be found in NSI internet web-site: (<http://www.nsi.bg/otrasalen.php?otr=46>).


**Percentage changes of Industrial Production Indices compared to the previous month\***

Economic Activities	NACE.BG - 2008 Code	2011					2012
		VIII	IX	X	XI	XII	I
<b>Industry</b>	<b>B_TO_E36</b>	<b>-1.5</b>	<b>0.6</b>	<b>0.1</b>	<b>-0.5</b>	<b>-1.0</b>	<b>-0.6</b>
<b>Mining and quarrying</b>	<b>B</b>	<b>-3.5</b>	<b>3.1</b>	<b>0.1</b>	<b>-10.0</b>	<b>18.7</b>	<b>-7.6</b>
of which:							
Mining of coal and lignite	B05	5.3	0.5	-3.8	5.5	-1.5	-15.3
Mining of metal ores	B07	-17.1	19.8	-3.8	-39.7	89.6	-5.1
Other mining and quarrying	B08	-2.4	-11.0	13.1	-9.7	4.6	4.4
<b>Manufacturing</b>	<b>C</b>	<b>-2.1</b>	<b>2.2</b>	<b>-0.9</b>	<b>-0.8</b>	<b>-2.7</b>	<b>2.0</b>
of which:							
Manufacture of food products	C10	-2.4	1.9	1.0	-2.7	-1.4	-1.4
Manufacture of beverages	C11	-4.7	4.5	-3.2	-7.8	-2.8	3.6
Manufacture of tobacco products	C12	-1.9	-4.6	-1.4	21.5	-6.7	11.2
Manufacture of textiles	C13	16.3	-14.7	-8.3	5.1	-1.9	-2.9
Manufacture of wearing apparel	C14	-2.4	-1.0	-3.2	-5.2	0.3	5.2
Manufacture of leather and related products	C15	-0.2	-0.6	-6.7	-4.8	-2.2	0.4
Manufacture of wood and of products of wood and cork, except furniture; manufacture of articles of straw and plaiting materials	C16	-2.3	-0.6	-0.9	-3.2	7.1	-7.2
Manufacture of paper and paper products	C17	-7.7	-1.8	-14.1	-10.1	-30.7	20.2
Printing and reproduction of recorded media	C18	-7.9	0.5	12.1	-2.8	-8.1	3.2
Manufacture of chemicals and chemical products	C20	3.6	-1.1	-5.0	-5.0	7.2	0.3
Manufacture of basic pharmaceutical products and pharmaceutical preparations	C21	0.3	-1.4	5.9	2.6	2.1	-8.5
Manufacture of rubber and plastic products	C22	-0.2	2.7	-6.2	-7.3	0.5	12.1
Manufacture of other non-metallic mineral products	C23	-1.4	7.1	0.3	-9.1	-0.1	3.6
Manufacture of basic metals	C24	-3.8	-9.2	12.9	4.6	-14.4	14.4
Manufacture of fabricated metal products, except machinery and equipment	C25	-10.2	12.4	15.5	-12.5	-22.0	13.1
Manufacture of computer, electronic and optical products	C26	-14.9	-5.1	4.3	11.2	-17.4	33.0
Manufacture of electrical equipment	C27	-3.3	-7.2	1.8	8.8	-2.7	-6.3
Manufacture of machinery and equipment n.e.c.	C28	-5.9	6.5	-2.2	1.7	-6.9	3.4
Manufacture of motor vehicles, trailers and semi-trailers	C29	0.3	-16.1	15.8	-3.8	-11.1	-0.5
Manufacture of other transport equipment	C30	-30.2	65.0	-20.2	37.9	-37.5	78.0
Manufacture of furniture	C31	3.6	-3.8	2.0	-4.4	-0.6	-0.7
Other manufacturing	C32	-4.4	-12.3	-0.6	-5.0	-1.6	54.6
Repair and installation of machinery and equipment	C32	18.6	38.7	-24.7	13.5	-8.5	0.3
<b>Electricity, gas, steam and air conditioning supply</b>	<b>D</b>	<b>-3.9</b>	<b>-7.1</b>	<b>7.0</b>	<b>2.6</b>	<b>-3.9</b>	<b>-4.3</b>
Electricity, gas, steam and air conditioning supply	D35	-3.9	-7.1	7.0	2.6	-3.9	-4.3

\* Seasonally adjusted.


**Percentage changes of Industrial Production Indices compared to the same month of the previous year \***

Economic Activities	NACE.BG - 2008 Code	2011					2012
		VIII	IX	X	XI	XII	I
<b>Industry</b>	<b>B_TO_E36</b>	<b>2.8</b>	<b>3.6</b>	<b>3.4</b>	<b>1.7</b>	<b>0.1</b>	<b>-3.6</b>
<b>Mining and quarrying</b>	<b>B</b>	<b>9.5</b>	<b>11.1</b>	<b>12.0</b>	<b>-7.2</b>	<b>23.4</b>	<b>0.8</b>
of which:							
Mining of coal and lignite	B05	21.4	21.7	7.5	18.2	22.3	-5.8
Mining of metal ores	B07	-11.3	5.9	18.1	-43.1	27.8	4.0
Other mining and quarrying	B08	6.8	-18.0	3.0	-11.5	-5.4	2.4
<b>Manufacturing</b>	<b>C</b>	<b>1.3</b>	<b>3.8</b>	<b>2.4</b>	<b>-1.0</b>	<b>-2.9</b>	<b>-4.1</b>
of which:							
Manufacture of food products	C10	-7.9	-9.0	-3.2	-9.6	-7.7	-11.2
Manufacture of beverages	C11	-6.4	0.5	7.0	-14.1	-10.5	-12.6
Manufacture of tobacco products	C12	-1.5	-4.3	-7.6	21.6	4.9	19.1
Manufacture of textiles	C13	23.5	-3.6	-14.4	-3.3	0.2	-13.5
Manufacture of wearing apparel	C14	3.8	-1.0	-6.8	-12.6	-8.8	-4.6
Manufacture of leather and related products	C15	-2.2	-0.6	-5.2	-10.1	-6.5	-8.4
Manufacture of wood and of products of wood and cork, except furniture; manufacture of articles of straw and plaiting materials	C16	-0.4	-2.4	-7.4	-5.5	6.9	-11.9
Manufacture of paper and paper products	C17	-5.4	-3.2	1.3	-24.4	-46.2	-45.1
Printing and reproduction of recorded media	C18	-6.1	-13.9	2.0	-0.3	-6.4	-7.7
Manufacture of chemicals and chemical products	C20	7.8	6.8	0.4	-17.6	15.4	-8.8
Manufacture of basic pharmaceutical products and pharmaceutical preparations	C21	14.4	4.5	15.6	27.1	29.6	13.8
Manufacture of rubber and plastic products	C22	2.2	-2.5	-2.1	-14.4	-9.2	-3.8
Manufacture of other non-metallic mineral products	C23	4.0	11.7	16.8	-5.1	0.4	1.5
Manufacture of basic metals	C24	12.8	-7.3	8.7	26.1	-5.5	9.2
Manufacture of fabricated metal products, except machinery and equipment	C25	-0.5	8.5	27.0	3.1	-2.2	-11.4
Manufacture of computer, electronic and optical products	C26	11.9	9.6	3.7	22.8	-5.5	19.0
Manufacture of electrical equipment	C27	9.5	-7.8	-4.8	15.1	11.0	-7.7
Manufacture of machinery and equipment n.e.c.	C28	1.5	12.9	5.1	9.1	2.9	-0.2
Manufacture of motor vehicles, trailers and semi-trailers	C29	8.5	-16.3	-8.4	-3.2	-20.4	-25.0
Manufacture of other transport equipment	C30	-62.4	20.0	7.4	59.8	-40.1	7.0
Manufacture of furniture	C31	19.3	5.0	10.7	-0.7	10.2	-1.0
Other manufacturing	C32	32.4	5.0	-0.2	-21.0	-9.1	25.9
Repair and installation of machinery and equipment	C33	-27.9	40.5	-16.4	9.2	-17.1	-10.1
<b>Electricity, gas, steam and air conditioning supply</b>	<b>D</b>	<b>5.3</b>	<b>-1.1</b>	<b>2.6</b>	<b>14.4</b>	<b>4.2</b>	<b>-3.1</b>
Electricity, gas, steam and air conditioning supply	D35	5.3	-1.1	2.6	14.4	4.2	-3.1

\* Working day adjusted.



**Industrial Production Indices**  
(seasonally adjusted, 2005=100)

NACE.BG - 2008 Code	2011												2012
	I	II	III	IV	V	VI	VII	VIII	IX	X	XI	XII	I
<b>B_TO_E36</b>	<b>104.5</b>	<b>103.0</b>	<b>103.4</b>	<b>104.0</b>	<b>104.2</b>	<b>101.5</b>	<b>104.1</b>	<b>102.5</b>	<b>103.1</b>	<b>103.2</b>	<b>102.7</b>	<b>101.7</b>	<b>101.1</b>
<b>B</b>	<b>82.5</b>	<b>74.7</b>	<b>79.3</b>	<b>81.0</b>	<b>88.6</b>	<b>76.0</b>	<b>84.6</b>	<b>81.6</b>	<b>84.1</b>	<b>84.2</b>	<b>75.8</b>	<b>90.0</b>	<b>83.2</b>
<b>B05</b>	107.3	106.3	110.9	149.2	142.7	120.5	114.5	120.6	121.2	116.6	123.0	121.2	102.6
<b>B07</b>	79.9	59.4	68.8	60.4	64.0	55.7	80.0	66.3	79.4	76.4	46.1	87.4	82.9
<b>B08</b>	63.3	66.9	56.1	63.6	67.8	63.2	66.9	65.3	58.1	65.7	59.3	62.0	64.7
<b>C</b>	<b>104.7</b>	<b>101.2</b>	<b>102.1</b>	<b>101.0</b>	<b>102.1</b>	<b>100.6</b>	<b>102.7</b>	<b>100.5</b>	<b>102.7</b>	<b>101.8</b>	<b>101.0</b>	<b>98.3</b>	<b>100.3</b>
<b>C10</b>	118.5	118.9	111.3	113.2	109.5	106.6	110.8	108.1	110.1	111.2	108.2	106.7	105.2
<b>C11</b>	91.1	95.0	85.5	85.6	89.4	83.7	88.9	84.7	88.5	85.7	79.0	76.8	79.6
<b>C12</b>	108.0	110.8	100.8	108.6	99.7	107.2	101.1	99.2	94.6	93.3	113.4	105.8	117.7
<b>C13</b>	70.1	71.0	67.6	72.3	74.4	73.7	66.8	77.7	66.3	60.8	63.9	62.7	60.9
<b>C14</b>	70.8	71.8	69.5	68.6	70.9	68.6	71.9	70.2	69.5	67.3	63.8	64.0	67.3
<b>C15</b>	76.7	73.0	79.6	77.8	79.4	74.9	81.2	81.0	80.5	75.1	71.5	69.9	70.2
<b>C16</b>	92.6	88.7	82.6	83.2	80.1	84.6	88.1	86.1	85.6	84.8	82.1	87.9	81.6
<b>C17</b>	157.4	145.0	141.7	148.7	160.9	151.8	148.4	137.0	134.5	115.5	103.8	71.9	86.4
<b>C18</b>	112.0	112.0	110.4	100.8	105.7	103.6	108.2	99.6	100.1	112.2	109.1	100.3	103.5
<b>C20</b>	116.0	120.9	96.8	107.0	115.6	107.6	106.6	110.4	109.2	103.7	98.5	105.6	105.9
<b>C21</b>	84.8	90.4	93.1	95.6	94.3	96.4	97.7	98.0	96.6	102.3	105.0	107.2	98.1
<b>C22</b>	120.4	120.6	115.9	108.8	122.5	113.6	115.4	115.2	118.3	111.0	102.9	103.4	115.9
<b>C23</b>	85.5	86.9	84.9	86.8	85.7	88.0	87.2	86.0	92.1	92.4	84.0	83.9	86.9
<b>C24</b>	103.1	98.7	101.0	101.8	111.0	108.0	110.2	106.0	96.2	108.6	113.6	97.2	111.2
<b>C25</b>	113.7	88.8	106.8	101.3	112.1	108.0	111.9	100.5	113.0	130.5	114.2	89.1	100.8
<b>C26</b>	123.6	130.3	120.9	114.9	130.8	128.1	142.9	121.6	115.4	120.4	133.9	110.6	147.1
<b>C27</b>	154.9	156.4	155.8	145.9	151.5	152.9	158.9	153.7	142.7	145.3	158.1	153.9	144.2
<b>C28</b>	120.2	119.1	118.2	113.0	126.2	122.7	125.1	117.7	125.4	122.6	124.7	116.1	120.1
<b>C29</b>	168.9	142.1	146.0	130.7	150.7	137.8	153.0	153.5	128.8	149.1	143.5	127.5	126.9
<b>C30</b>	94.4	90.6	92.3	96.4	112.4	77.8	68.3	47.7	78.7	62.8	86.6	54.1	96.3
<b>C31</b>	109.3	107.4	104.7	106.5	108.1	105.7	113.0	117.1	112.7	114.9	109.9	109.2	108.4
<b>C32</b>	161.6	153.5	152.1	128.0	166.7	163.8	169.1	161.6	141.8	140.9	133.8	131.6	203.5
<b>C33</b>	115.0	113.2	101.2	106.6	92.3	89.6	79.9	94.8	131.5	99.0	112.4	102.9	103.2
<b>D</b>	<b>114.9</b>	<b>123.5</b>	<b>121.6</b>	<b>124.7</b>	<b>118.8</b>	<b>114.1</b>	<b>123.3</b>	<b>118.5</b>	<b>110.1</b>	<b>117.8</b>	<b>120.9</b>	<b>116.2</b>	<b>111.2</b>
<b>D35</b>	114.9	123.5	121.6	124.7	118.8	114.1	123.3	118.5	110.1	117.8	120.9	116.2	111.2



**Industrial Production Indices**  
(working day adjusted, 2005=100)

NACE.BG - 2008 Code	2009	2010	2011												2012
	I	I	I	II	III	IV	V	VI	VII	VIII	IX	X	XI	XII	I
<b>B_TO_E36</b>	<b>87.3</b>	<b>86.2</b>	<b>95.3</b>	<b>96.4</b>	<b>106.4</b>	<b>100.1</b>	<b>101.0</b>	<b>104.1</b>	<b>108.8</b>	<b>101.1</b>	<b>103.8</b>	<b>108.5</b>	<b>108.3</b>	<b>103.9</b>	<b>91.9</b>
<b>B</b>	<b>71.0</b>	<b>68.0</b>	<b>76.9</b>	<b>70.4</b>	<b>77.9</b>	<b>77.9</b>	<b>85.2</b>	<b>73.0</b>	<b>83.9</b>	<b>79.5</b>	<b>86.4</b>	<b>94.1</b>	<b>82.0</b>	<b>96.0</b>	<b>77.5</b>
<b>B05</b>	118.8	101.4	115.5	112.6	109.6	121.1	126.6	104.9	109.7	112.2	125.2	140.9	146.8	131.2	108.8
<b>B07</b>	46.6	61.7	72.3	54.1	67.5	65.7	67.0	58.3	78.8	65.9	77.4	79.6	46.6	90.6	75.2
<b>B08</b>	53.2	47.0	41.4	53.2	52.7	62.3	72.8	68.2	70.2	68.9	62.0	74.4	65.1	67.0	42.4
<b>C</b>	<b>77.6</b>	<b>76.6</b>	<b>87.6</b>	<b>89.6</b>	<b>103.1</b>	<b>98.4</b>	<b>102.3</b>	<b>108.6</b>	<b>110.4</b>	<b>101.1</b>	<b>107.2</b>	<b>108.6</b>	<b>106.2</b>	<b>95.7</b>	<b>84.0</b>
<b>C10</b>	98.5	93.5	99.1	102.4	109.2	108.6	105.6	109.5	112.5	112.4	120.1	122.8	115.7	112.3	88.0
<b>C11</b>	69.9	53.6	57.1	62.3	78.0	81.6	94.9	99.9	110.1	108.3	95.5	77.8	75.1	87.2	49.9
<b>C12</b>	52.0	57.7	79.1	73.9	84.1	90.7	102.2	123.0	116.2	115.6	104.1	107.5	136.9	103.7	94.2
<b>C13</b>	59.2	48.4	55.6	69.3	75.4	78.4	81.2	86.1	74.6	63.6	63.7	61.2	67.4	53.3	48.1
<b>C14</b>	81.6	66.2	69.6	71.6	68.4	61.3	64.4	71.5	83.5	70.4	68.5	68.5	63.9	64.5	66.4
<b>C15</b>	80.9	78.6	77.0	73.9	84.8	66.0	69.2	79.6	95.2	78.6	84.3	77.7	70.0	65.2	70.5
<b>C16</b>	50.7	53.1	71.3	76.6	82.0	82.1	77.3	91.2	96.2	89.9	93.2	93.6	87.8	83.4	62.8
<b>C17</b>	77.2	91.5	145.3	131.8	144.3	150.9	161.6	166.1	157.1	139.1	139.9	112.9	101.9	69.5	79.7
<b>C18</b>	104.1	97.5	92.4	97.7	103.8	95.2	99.6	108.3	108.3	103.9	106.2	124.6	118.1	113.3	85.3
<b>C20</b>	78.3	74.2	107.4	114.2	105.8	111.7	113.3	112.7	108.0	104.6	110.2	100.9	101.8	104.3	98.0
<b>C21</b>	62.5	76.6	68.0	90.3	98.5	91.7	90.8	109.5	84.1	97.6	95.5	114.7	115.7	110.0	77.4
<b>C22</b>	84.2	82.6	96.0	103.5	117.7	107.9	115.7	122.9	127.6	117.9	124.6	124.4	109.3	97.9	92.4
<b>C23</b>	66.3	44.2	58.8	69.7	83.6	89.4	92.8	99.9	95.6	90.1	102.1	103.8	88.5	72.4	59.7
<b>C24</b>	83.3	84.9	94.3	96.6	110.4	104.3	119.3	108.6	120.1	101.5	88.1	118.1	117.3	76.1	103.0
<b>C25</b>	65.2	57.5	81.5	79.4	110.4	102.5	107.5	116.6	116.8	100.5	116.4	129.4	120.2	105.6	72.2
<b>C26</b>	64.6	85.0	105.5	112.0	124.9	112.6	123.2	134.4	142.6	110.8	123.2	122.3	139.4	138.1	125.5
<b>C27</b>	108.3	137.3	138.1	146.3	159.4	133.5	140.0	158.8	170.8	139.8	150.9	163.8	181.5	147.4	127.4
<b>C28</b>	106.1	78.9	99.2	112.2	123.4	109.6	123.3	135.7	136.1	108.6	129.9	131.3	132.5	112.1	99.0
<b>C29</b>	69.9	135.5	156.3	131.0	154.8	132.6	155.7	149.3	149.8	137.2	127.3	157.3	158.5	120.1	117.2
<b>C30</b>	51.2	40.7	52.5	66.1	89.4	83.5	171.3	81.5	74.7	49.5	86.3	52.2	81.5	59.4	56.2
<b>C31</b>	81.9	72.4	89.6	95.5	106.6	102.0	105.0	110.4	117.0	118.5	115.2	126.2	119.7	114.1	88.7
<b>C32</b>	107.6	100.3	130.8	134.2	149.4	123.9	164.7	186.0	169.1	164.4	152.6	163.0	142.8	121.7	164.7
<b>C33</b>	69.2	69.7	78.9	93.3	101.4	97.4	87.4	93.8	81.7	93.3	141.3	102.7	121.7	140.7	70.9
<b>D</b>	<b>127.8</b>	<b>128.0</b>	<b>131.3</b>	<b>135.1</b>	<b>133.5</b>	<b>117.7</b>	<b>102.3</b>	<b>100.5</b>	<b>115.3</b>	<b>108.1</b>	<b>97.2</b>	<b>113.4</b>	<b>129.3</b>	<b>140.9</b>	<b>127.2</b>
<b>D35</b>	127.8	128.0	131.3	135.1	133.5	117.7	102.3	100.5	115.3	108.1	97.2	113.4	129.3	140.9	127.2