

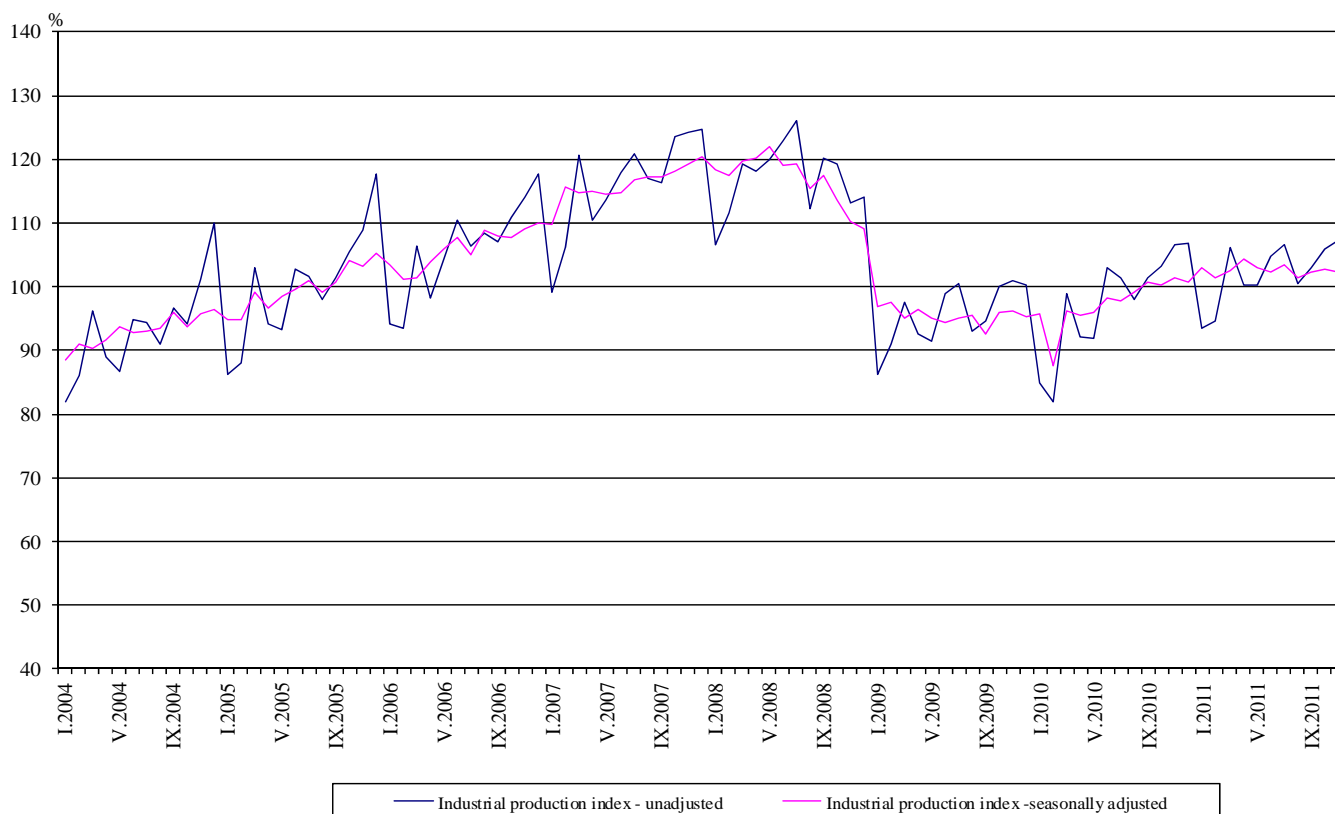


Industrial Production Indices in November 2011¹

The preliminary data showed that the Industrial Production Index², seasonally adjusted³, decreased by 0.4% in November 2011 as compared to October 2011.

In November 2011 working day adjusted⁴ Industrial Production Index rose by 0.6% as compared to the same month of 2010.

Figure 1. Industrial Production Indices (2005=100)



¹November 2011 data are preliminary.

² Monthly Industrial Production and Industrial turnover indices measure changes in **production and turnover values** of industrial enterprises. This information can be used to assess the current economic development and for short-term forecasts. Indices do not measure the actual production level, it aims to measure the average change in value of production between two points of time

Indices are compiled on the base of information collected through representative sampling survey on industrial enterprises. The sample covers enterprises with annual turnover more than 97% of total turnover in industry.

Industrial production indices are calculated at constant base year (2005) that is to say they are weighted with the structure of the value added at factor costs in the base year.

³ **Seasonal adjustment** is a statistical method, which eliminates the seasonal component of time series and it is particularly suitable for long-term comparisons and analysis of the data.

⁴ **Working day adjustment** is an adjustment for variations caused by calendar effects, different number of calendar and working days in the months, national holidays and outliers (for example the presence of more non-working days in May could contribute to the decline in the production in some activities).

The seasonally and working day adjusted data on Industrial production index for the period 2000-2010 can be found in NSI internet web-site: (<http://www.nsi.bg/otrasalen.php?otr=46>).

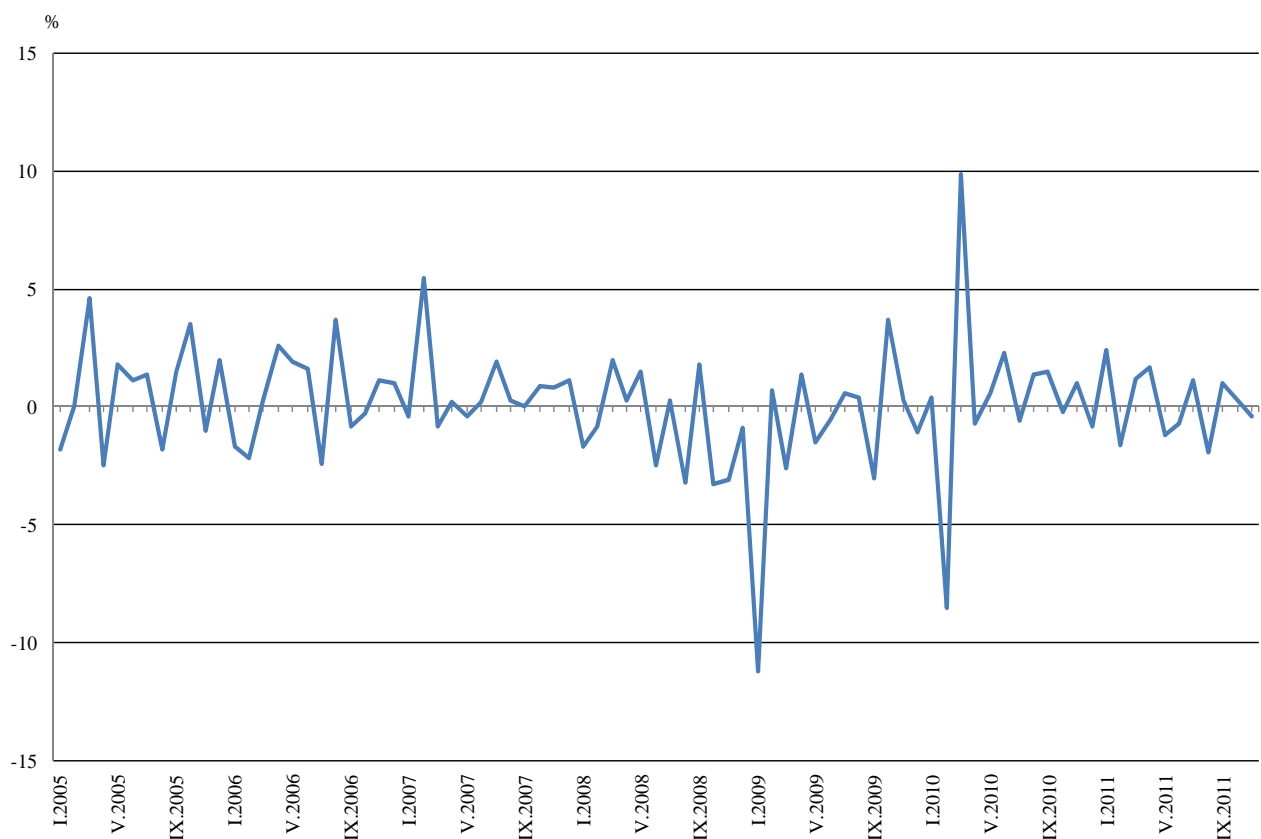


Monthly comparisons

In November 2011 as compared to October 2011, the seasonally adjusted Industrial Production Index in the mining and quarrying industry decreased by 13.6%, in the manufacturing - by 1.5%, while in the electricity, gas, steam and air conditioning supply increased by 1.9%.

The most significant decreases of production in the manufacturing were seen in the manufacture of fabricated metal products, except machinery and equipment by 10.7%, in the manufacture of rubber and plastic products by 8.1%, in the manufacture of beverages by 7.2%, in the manufacture of paper and paper products by 6.0%, in the manufacture of wearing apparel by 3.9%. There was increase in the repair and installation of machinery and equipment by 15.5%, in the manufacture of tobacco products by 14.4%, in the manufacture of electrical equipment by 8.2%.

Figure 2. Percentage changes of Industrial Production Indices compared to the previous month (seasonally adjusted)



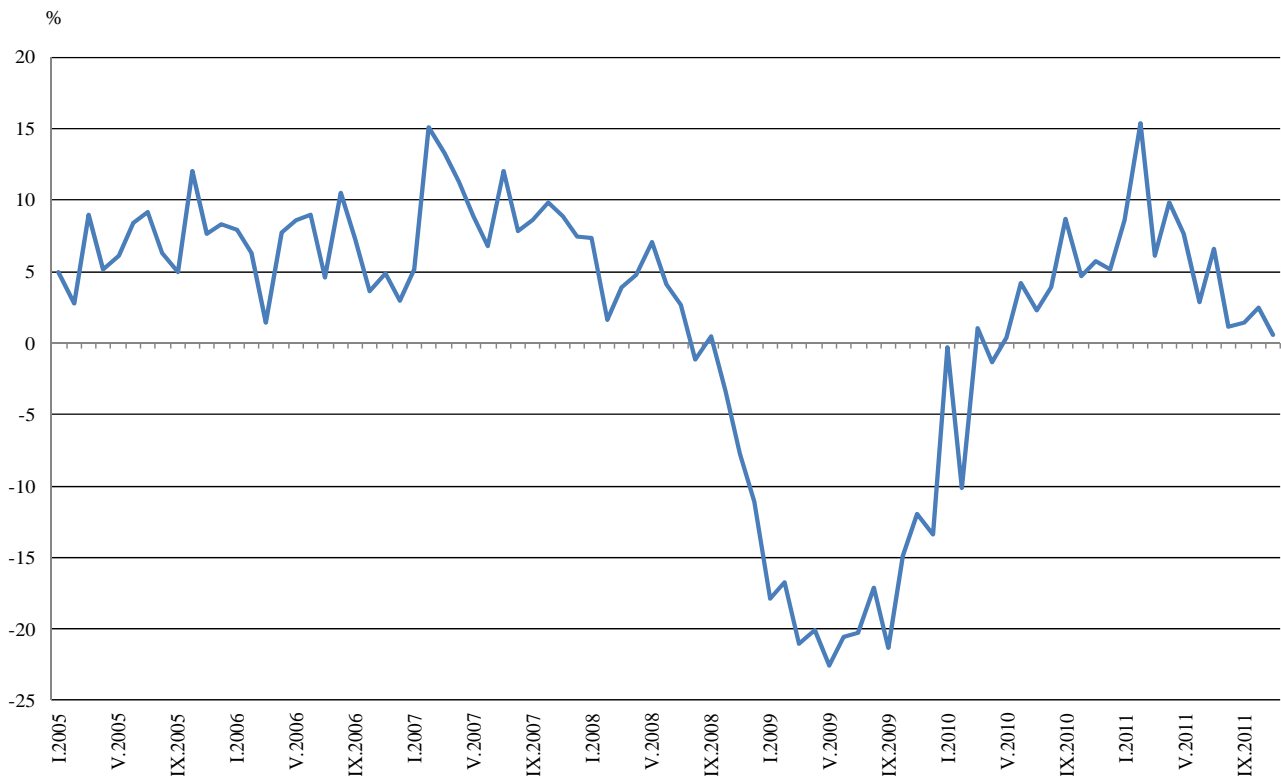


Annual comparisons

On annual basis in November 2011 Industrial Production Index, calculated from working day adjusted data in the electricity, gas, steam and air conditioning supply grew by 10.5%, while in the mining and quarrying industry the production decreased by 7.5% and in the manufacturing by 1.5%.

Increases were registered in the production of investment goods by 7.8% and in the production of energy by 5.0%, while in the production of intermediate goods a decrease by 2.6% was seen.

Figure 3. Percentage changes of Industrial Production Indices compared to the same month of the previous year (Working day adjusted)



The final data on Industrial Production and Turnover Indices for October 2011 can be found in NSI internet web-site: (<http://www.nsi.bg/otrasalen.php?otr=46>).



Percentage changes of Industrial Production Indices compared to the previous month¹

Economic Activities	NACE.BG 2008 Code	2011					
		VI	VII	VIII	IX	X	XI
Industry	B_TO_E36	-0.7	1.1	-1.9	1.0	0.3	-0.4
Mining and quarrying	B	-13.6	11.4	-5.5	9.8	9.3	-13.6
of which:							
Mining of coal and lignite	B05	-14.8	-4.8	7.4	-1.6	2.2	6.6
Mining of metal ores	B07	-7.2	41.8	-17.9	20.7	-7.4	-36.9
Other mining and quarrying	B08	-4.8	6.3	-3.5	-10.7	11.1	-10.5
Manufacturing	C	0.6	-0.2	-3.3	3.7	-0.1	-1.5
of which:							
Manufacture of food products	C10	1.1	2.3	-2.7	1.5	1.9	-2.6
Manufacture of beverages	C11	-1.7	5.2	-4.6	6.5	-7.1	-7.2
Manufacture of tobacco products	C12	10.3	-8.5	-3.4	-7.0	-2.2	14.4
Manufacture of textiles	C13	2.3	-11.5	19.1	-13.6	-5.6	5.9
Manufacture of wearing apparel	C14	1.7	1.4	-1.2	-1.3	-5.7	-3.9
Manufacture of leather and related products	C15	1.8	1.4	-1.6	0.3	-3.5	-0.8
Manufacture of wood and of products of wood and cork, except furniture; manufacture of articles of straw and plaiting materials	C16	10.7	2.6	-1.8	0.2	-3.6	-5.0
Manufacture of paper and paper products	C17	-0.2	-4.9	-7.7	-2.5	-20.8	-6.0
Printing and reproduction of recorded media	C18	0.9	2.1	-11.3	2.4	14.6	-3.5
Manufacture of chemicals and chemical products	C20	-6.2	0.3	1.4	-3.5	-3.6	-4.1
Manufacture of basic pharmaceutical products and pharmaceutical preparations	C21	7.5	-1.5	-1.5	0.4	6.0	2.4
Manufacture of rubber and plastic products	C22	-4.3	-2.9	2.5	1.7	-5.6	-8.1
Manufacture of other non-metallic mineral products	C23	5.2	-3.9	-3.7	8.3	-1.7	-7.3
Manufacture of basic metals	C24	-6.2	4.1	-6.8	-10.4	19.1	2.9
Manufacture of fabricated metal products, except machinery and equipment	C25	0.4	4.6	-11.8	17.7	9.3	-10.7
Manufacture of computer, electronic and optical products	C26	5.7	5.6	-11.3	-8.5	7.4	9.2
Manufacture of electrical equipment	C27	5.9	-1.2	-3.2	-6.8	3.2	8.2
Manufacture of machinery and equipment n.e.c.	C28	0.6	-3.0	-5.4	6.7	-1.8	1.9
Manufacture of motor vehicles, trailers and semi-trailers	C29	-2.8	0.9	-4.9	0.0	3.7	-1.7
Manufacture of other transport equipment	C30	-34.5	-12.7	-33.7	59.3	-11.0	36.0
Manufacture of furniture	C31	2.8	2.3	2.6	-2.6	2.5	-5.0
Other manufacturing	C32	4.1	4.9	-11.2	-6.0	-6.4	-6.1
Repair and installation of machinery and equipment	C32	-2.8	-10.2	15.9	40.5	-24.1	15.5
Electricity, gas, steam and air conditioning supply	D	-2.9	8.7	-6.4	-7.0	7.4	1.9
Electricity, gas, steam and air conditioning supply	D35	-2.9	8.7	-6.4	-7.0	7.4	1.9

¹ Seasonally adjusted.

Percentage changes of Industrial Production Indices compared to the same month of the previous year¹

Economic Activities	NACE.BG 2008 Code	2011					
		VI	VII	VIII	IX	X	XI
Industry	B_TO_E36	2.9	6.6	1.1	1.4	2.5	0.6
Mining and quarrying	B	-4.7	10.5	7.4	7.3	12.9	-7.5
of which:							
Mining of coal and lignite	B05	17.5	12.7	20.0	14.8	9.6	20.3
Mining of metal ores	B07	-25.8	5.7	-12.9	2.8	15.5	-41.4
Other mining and quarrying	B08	-5.6	7.6	6.7	-18.2	1.5	-14.0
Manufacturing	C	5.7	6.4	1.1	2.6	2.6	-1.5
of which:							
Manufacture of food products	C10	-10.0	-4.8	-7.8	-9.9	-2.5	-9.6
Manufacture of beverages	C11	-3.8	3.7	-6.6	2.6	3.9	-15.4
Manufacture of tobacco products	C12	9.2	-2.2	0.2	-3.1	-8.4	5.7
Manufacture of textiles	C13	16.1	-6.7	27.5	0.1	-5.8	4.9
Manufacture of wearing apparel	C14	7.7	4.8	5.1	-0.3	-7.9	-12.6
Manufacture of leather and related products	C15	0.7	7.4	-1.6	0.7	-9.7	-9.1
Manufacture of wood and of products of wood and cork, except furniture; manufacture of articles of straw and plaiting materials	C16	6.2	2.8	2.5	0.8	-7.3	-4.1
Manufacture of paper and paper products	C17	9.6	18.8	-3.9	-1.9	-1.8	-23.5
Printing and reproduction of recorded media	C18	6.0	4.9	-8.9	-18.6	0.8	-2.1
Manufacture of chemicals and chemical products	C20	23.8	14.4	9.0	3.4	0.4	-16.9
Manufacture of basic pharmaceutical products and pharmaceutical preparations	C21	16.5	16.3	13.7	4.6	14.4	28.8
Manufacture of rubber and plastic products	C22	6.3	-0.6	5.2	-0.5	1.0	-13.1
Manufacture of other non-metallic mineral products	C23	0.8	9.2	3.6	9.9	13.5	-3.9
Manufacture of basic metals	C24	13.3	12.8	7.8	-11.9	9.2	23.2
Manufacture of fabricated metal products, except machinery and equipment	C25	7.8	19.5	2.5	16.0	23.0	5.0
Manufacture of computer, electronic and optical products	C26	31.3	29.6	12.2	8.3	5.9	16.7
Manufacture of electrical equipment	C27	16.1	13.8	11.4	-7.0	-2.7	15.4
Manufacture of machinery and equipment n.e.c.	C28	19.5	18.1	2.5	12.2	6.5	11.3
Manufacture of motor vehicles, trailers and semi-trailers	C29	-11.5	9.2	7.4	-19.1	-7.7	-5.6
Manufacture of other transport equipment	C30	-11.4	-11.4	-67.2	2.8	8.5	56.4
Manufacture of furniture	C31	16.3	19.5	18.9	1.5	11.0	0.5
Other manufacturing	C32	26.7	45.4	19.6	2.9	-6.9	-26.7
Repair and installation of machinery and equipment	C33	-22.6	-30.4	-30.4	39.4	-17.6	12.8
Electricity, gas, steam and air conditioning supply	D	-3.1	7.3	-0.6	-5.3	-1.9	10.5
Electricity, gas, steam and air conditioning supply	D35	-3.1	7.3	-0.6	-5.3	-1.9	10.5

¹ Working day adjusted.

Industrial Production Indices
(Seasonally adjusted, 2005 = 100)

NACE.BG 2008 Code	2010		2011										
	XI	XII	I	II	III	IV	V	VI	VII	VIII	IX	X	XI
B_TO_E36	101.4	100.6	103.0	101.4	102.6	104.3	103.0	102.3	103.4	101.4	102.4	102.7	102.3
B	87.7	79.3	79.3	68.9	77.2	78.3	86.1	74.4	82.9	78.3	86.0	94.0	81.2
B05	105.7	99.5	103.5	107.1	115.4	133.6	140.3	119.6	113.8	122.2	120.3	123.0	131.1
B07	78.4	70.1	86.8	62.0	66.2	61.0	60.9	56.5	80.1	65.8	79.4	73.5	46.4
B08	66.4	65.0	64.3	66.1	56.4	63.5	66.9	63.7	67.7	65.3	58.3	64.8	58.0
C	103.8	91.3	106.9	100.9	100.6	101.6	103.2	103.8	103.6	100.2	103.9	103.8	102.2
C10	121.3	114.6	118.6	119.1	111.1	112.0	107.9	109.1	111.6	108.6	110.2	112.3	109.4
C11	89.8	82.9	91.7	94.3	85.3	87.7	86.9	85.4	89.8	85.7	91.3	84.8	78.7
C12	95.4	101.2	114.7	112.1	102.2	106.2	99.8	110.1	100.7	97.3	90.5	88.5	101.2
C13	66.1	63.3	69.5	69.8	66.6	74.3	74.8	76.5	67.7	80.6	69.6	65.7	69.6
C14	70.8	69.0	70.8	71.4	67.7	69.6	69.9	71.1	72.1	71.2	70.3	66.3	63.7
C15	77.7	77.7	76.3	75.9	78.3	77.0	78.2	79.6	80.7	79.4	79.6	76.8	76.2
C16	84.5	83.3	88.3	87.4	83.1	86.1	79.5	88.0	90.3	88.7	88.9	85.7	81.4
C17	134.6	131.4	150.0	138.2	147.4	148.9	161.1	160.7	152.9	141.2	137.6	109.0	102.5
C18	111.7	106.7	112.9	112.3	109.0	99.9	105.3	106.3	108.5	96.2	98.5	112.9	109.0
C20	118.3	94.7	117.2	120.8	101.6	108.3	118.6	111.2	111.5	113.1	109.1	105.2	100.9
C21	84.2	85.5	84.0	89.6	90.2	95.0	91.6	98.5	97.0	95.5	95.9	101.7	104.1
C22	119.0	114.2	120.6	119.9	115.0	108.7	123.5	118.2	114.8	117.7	119.7	113.0	103.9
C23	85.6	75.5	88.7	92.6	89.7	85.6	86.1	90.6	87.1	83.9	90.9	89.4	82.9
C24	92.6	92.9	105.2	98.1	98.8	103.2	113.7	106.6	111.0	103.5	92.7	110.4	113.6
C25	110.3	88.0	113.2	90.0	108.4	106.2	108.6	109.0	114.0	100.6	118.4	129.4	115.6
C26	114.8	118.1	126.8	130.8	120.1	112.4	125.6	132.8	140.3	124.4	113.8	122.2	133.4
C27	140.9	141.6	153.5	156.4	152.7	151.3	153.2	162.3	160.3	155.2	144.7	149.3	161.5
C28	113.1	108.3	113.7	118.9	123.1	119.2	128.6	129.4	125.5	118.7	126.6	124.3	126.7
C29	162.9	164.7	157.8	151.1	150.6	150.5	155.9	151.6	152.9	145.4	145.4	150.8	148.2
C30	60.2	70.6	110.7	92.5	95.0	96.7	121.8	79.8	69.7	46.2	73.6	65.5	89.1
C31	109.4	98.5	108.6	106.5	104.0	104.9	108.1	111.1	113.6	116.5	113.5	116.3	110.5
C32	165.5	146.3	167.8	143.6	138.4	130.2	153.5	159.8	167.6	148.8	139.8	130.9	122.9
C33	104.1	124.7	117.5	113.8	101.7	108.8	91.8	89.2	80.1	92.8	130.4	99.0	114.3
D	103.9	107.4	106.5	115.1	116.4	123.1	115.4	112.1	121.9	114.1	106.1	113.9	116.1
D35	103.9	107.4	106.5	115.1	116.4	123.1	115.4	112.1	121.9	114.1	106.1	113.9	116.1



Table 4

Industrial Production Indices
(Working day adjusted, 2005 = 100)

NACE.BG 2008 Code	2008	2009	2010		2011										
	XI	XI	XI	XII	I	II	III	IV	V	VI	VII	VIII	IX	X	XI
B_TO_E36	115.4	101.6	107.4	107.1	94.9	95.0	105.3	101.9	103.4	105.3	108.2	99.4	105.0	107.6	108.0
B	79.5	89.4	88.2	79.8	79.8	69.3	77.7	78.8	86.6	74.8	83.3	78.7	86.4	94.4	81.6
B05	114.7	118.1	125.4	110.2	117.1	112.1	112.7	113.9	131.9	108.3	108.2	113.2	122.5	141.7	150.9
B07	50.9	86.6	80.9	73.5	75.9	53.4	68.0	67.2	70.5	61.1	80.3	63.7	80.1	79.7	47.4
B08	121.3	81.1	74.3	71.9	41.6	53.3	53.6	62.2	74.2	68.5	70.8	68.9	63.0	73.9	63.9
C	115.4	97.4	108.6	103.3	88.4	89.2	104.0	99.9	107.6	111.5	110.2	100.4	110.0	108.7	107.0
C10	134.4	115.7	130.7	126.9	100.2	102.4	110.6	108.5	112.5	112.0	112.6	112.2	122.8	123.3	118.2
C11	114.1	89.1	88.3	102.3	57.8	62.4	78.8	86.0	98.0	101.7	111.6	107.2	100.9	76.7	74.7
C12	132.8	135.6	113.0	104.6	80.3	73.7	87.2	91.4	108.4	126.7	117.0	115.8	108.9	107.5	119.4
C13	90.0	69.6	71.7	58.8	57.0	69.0	76.1	81.7	89.3	90.8	73.5	64.9	70.1	66.2	75.2
C14	96.7	70.4	74.1	75.8	70.2	71.7	69.0	63.9	68.9	74.0	83.7	69.7	72.4	68.0	64.8
C15	126.4	74.3	76.0	71.7	75.7	74.1	84.1	69.7	70.5	81.3	98.2	75.7	89.6	76.6	69.1
C16	103.5	85.1	93.3	82.4	72.0	76.3	82.9	84.7	81.0	93.9	95.8	90.5	97.3	93.3	89.5
C17	97.2	79.0	137.6	133.4	144.4	130.3	149.2	149.6	164.8	166.4	156.8	141.6	142.3	109.5	105.3
C18	142.5	128.6	121.8	128.0	93.7	97.7	104.4	96.6	108.1	111.6	108.9	100.8	109.3	124.0	119.2
C20	80.1	84.4	125.0	93.6	106.7	114.1	107.1	109.9	118.8	115.5	112.2	105.1	110.8	100.3	103.9
C21	113.1	89.6	91.7	91.2	72.6	90.9	99.5	96.0	98.2	114.8	85.4	95.7	102.1	115.5	118.1
C22	134.9	116.4	129.3	114.3	97.4	102.9	118.7	108.1	124.8	128.3	126.4	119.9	129.1	126.9	112.4
C23	154.0	84.5	94.2	72.9	58.5	70.0	85.6	87.8	95.3	100.2	97.1	89.6	103.5	102.7	90.5
C24	90.7	110.3	94.4	77.8	94.5	96.5	108.5	103.9	115.9	106.3	118.9	100.8	83.9	117.4	116.3
C25	116.9	86.0	116.9	112.4	81.5	79.6	112.1	107.5	110.2	117.9	118.7	100.9	124.0	127.6	122.7
C26	90.4	110.7	119.3	156.6	106.9	109.5	124.0	108.5	129.1	136.6	136.7	111.0	123.3	121.9	139.2
C27	168.6	157.7	160.3	146.8	142.8	145.8	155.3	146.5	154.4	169.7	169.1	140.0	161.5	166.1	185.0
C28	139.7	101.6	122.2	116.9	97.1	109.6	131.2	117.5	132.3	142.7	135.2	108.7	134.9	132.2	136.0
C29	100.0	127.8	162.1	158.2	156.5	130.4	150.0	139.5	160.2	154.6	147.8	132.7	129.9	156.8	153.0
C30	178.4	92.6	54.1	93.8	56.2	65.6	91.9	76.8	179.9	80.0	76.2	48.3	80.5	53.9	84.6
C31	158.0	94.0	120.9	112.8	91.9	95.1	108.8	103.9	114.9	117.8	117.1	116.3	120.8	126.7	121.5
C32	157.2	146.8	183.3	143.0	133.9	124.2	137.8	126.7	164.8	179.0	167.2	146.8	155.1	152.8	134.3
C33	144.2	102.9	111.0	170.5	80.6	93.7	101.7	100.1	86.5	94.3	83.2	91.6	144.0	102.8	125.2
D	132.5	121.6	112.8	134.6	125.6	128.5	129.2	115.6	97.5	96.9	112.0	103.2	93.8	109.3	124.7
D35	132.5	121.6	112.8	134.6	125.6	128.5	129.2	115.6	97.5	96.9	112.0	103.2	93.8	109.3	124.7