

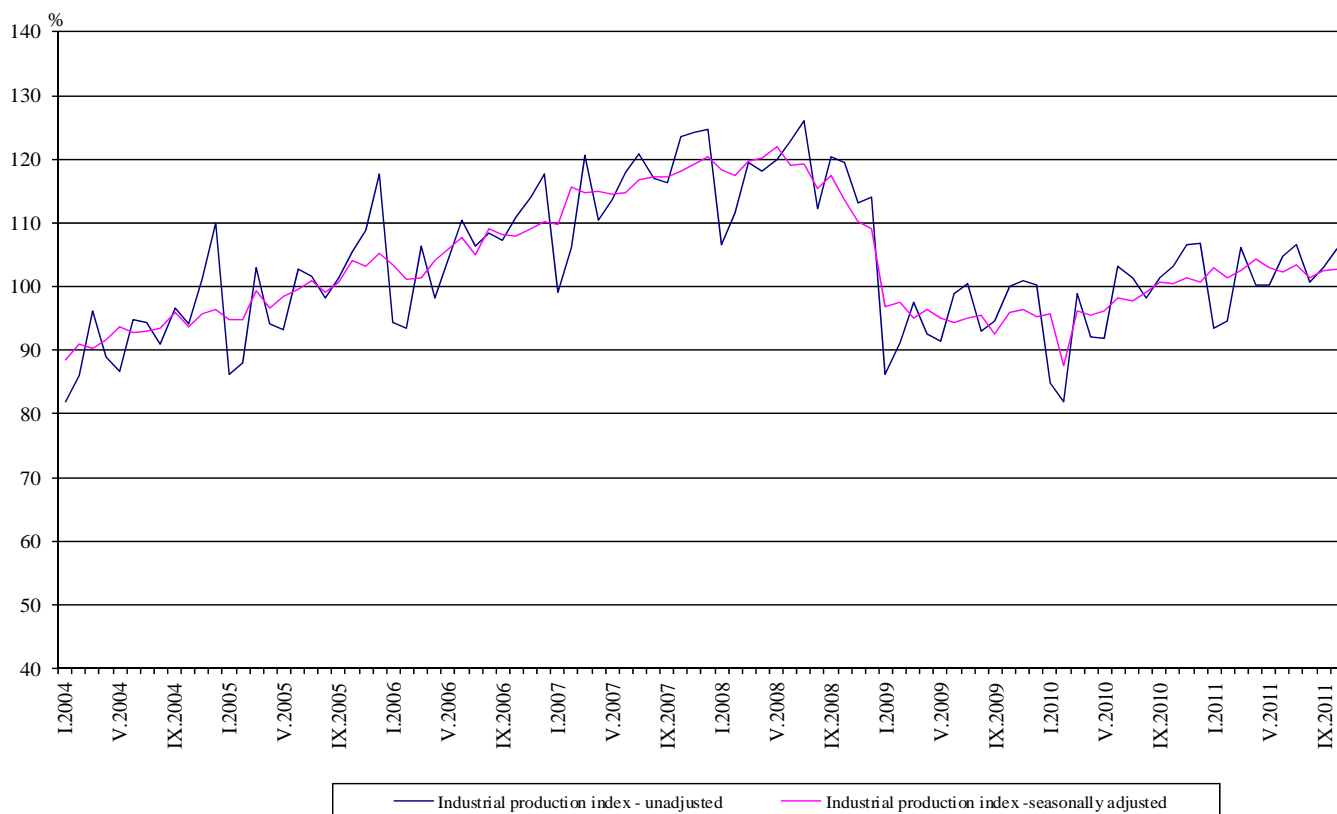


Industrial Production Indices in October 2011¹

The preliminary data showed that the Industrial Production Index², seasonally adjusted³, increased by 0.4% in October 2011 as compared to September 2011.

In October 2011 working day adjusted⁴ Industrial Production Index rose by 2.4% as compared to the same month of 2010.

Figure 1. Industrial Production Indices (2005 = 100)



¹October 2011 data are preliminary.

² Monthly Industrial Production and Industrial turnover indices measure changes in **production and turnover values** of industrial enterprises. This information can be used to assess the current economic development and for short-term forecasts. Indices do not measure the actual production level, it aims to measure the average change in value of production between two points of time

Indices are compiled on the base of information collected through representative sampling survey on industrial enterprises. The sample covers enterprises with annual turnover more than 97% of total turnover in industry.

Industrial production indices are calculated at constant base year (2005) that is to say they are weighted with the structure of the value added at factor costs in the base year.

³ **Seasonal adjustment** is a statistical method, which eliminates the seasonal component of time series and it is particularly suitable for long-term comparisons and analysis of the data.

⁴ **Working day adjustment** is an adjustment for variations caused by calendar effects, different number of calendar and working days in the months, national holidays and outliers (for example the presence of more non-working days in May could contribute to the decline in the production in some activities).

The seasonally and working day adjusted data on Industrial production index for the period 2000-2010 can be found in NSI internet website (<http://www.nsi.bg/otrasalen.php?otr=46>).

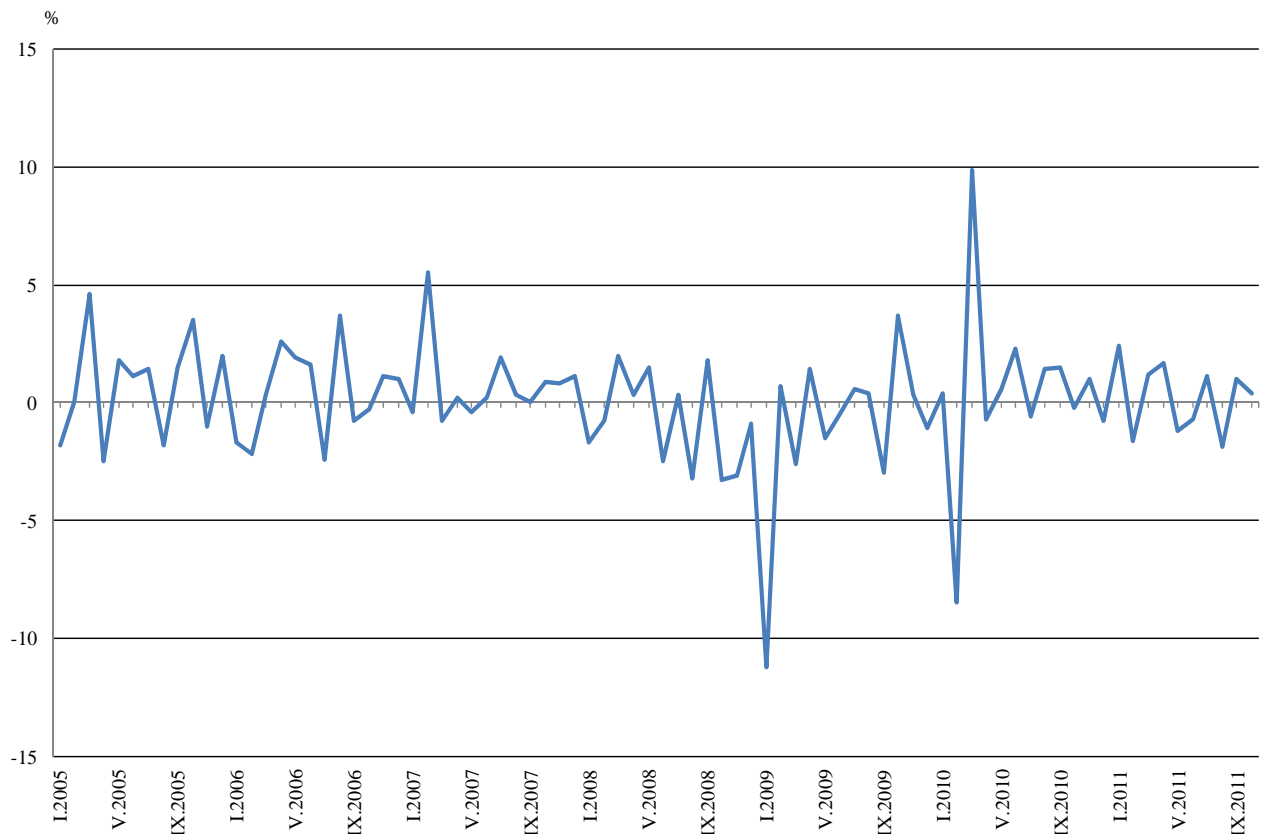


Monthly comparisons

In October 2011 as compared to September 2011, the seasonally adjusted Industrial Production Index in the mining and quarrying industry increased by 9.4%, in the electricity, gas, steam and air conditioning supply - by 7.3%, while in the manufacturing - decreased by 0.1%.

The most significant decreases of production in the manufacturing were seen in the repair and installation of machinery and equipment by 24.6%, in the manufacture of paper and paper products - by 20.3%, in the manufacture of beverages - by 6.1%, in the manufacture of rubber and plastic products - by 5.8%, in the manufacture of wearing apparel - by 5.0%. There was increase in the manufacture of basic metals by 18.4%, in the printing and reproduction of recorded media - by 13.9%, in the manufacture of fabricated metal products, except machinery and equipment - by 9.5%.

Figure 2. Percentage changes of Industrial Production Indices compared to the previous month (Seasonally adjusted)



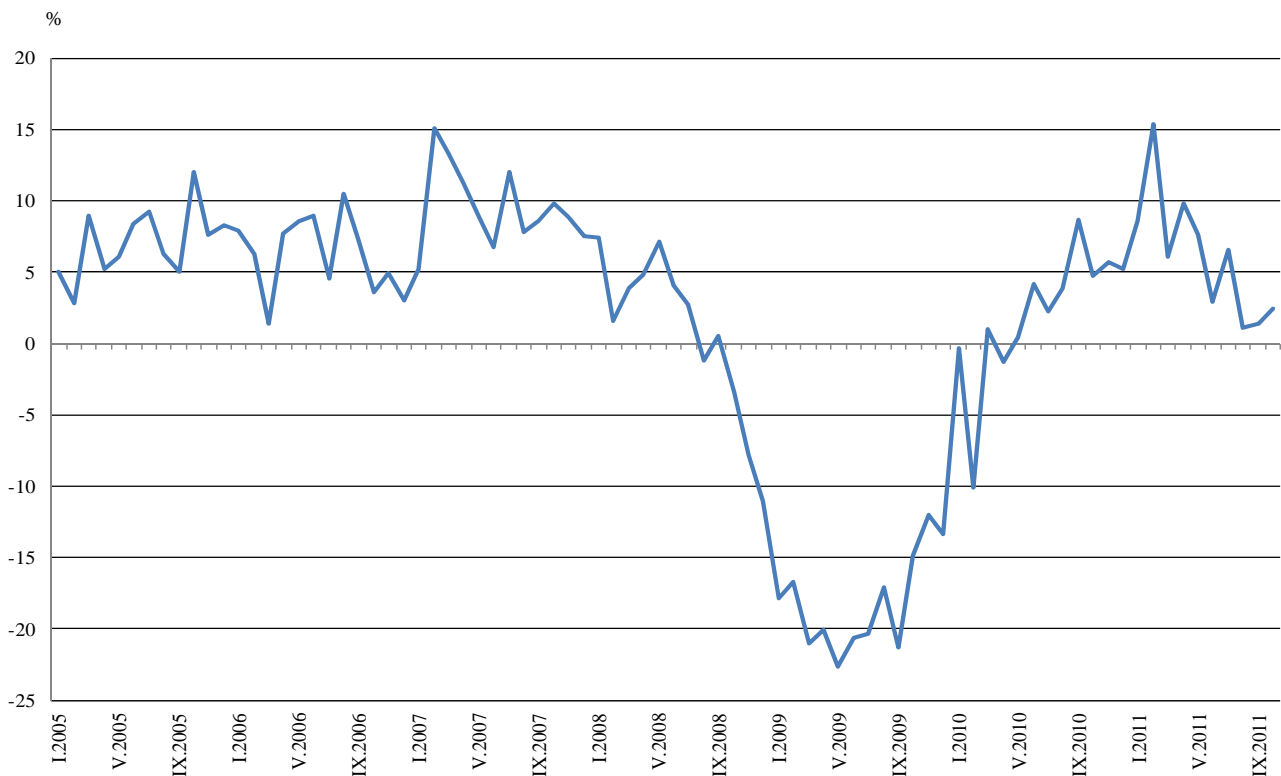


Annual comparisons

On annual bases in October 2011 Industrial Production Index, calculated from working day adjusted data in the mining and quarrying industry grew by 13.0%, in the manufacturing - by 2.5%, while in the electricity, gas, steam and air conditioning supply a decrease by 1.8% was seen.

Increases were registered in the production of intermediate goods by 5.7%, in the production of investment goods - by 5.0% and in the production of energy - by 1.9%.

**Figure 3. Percentage changes of Industrial Production Indices compared to the same month of the previous year
(Working day adjusted)**



The final data on Industrial Production and Turnover Indices for September 2011 can be found in NSI internet web-site: (<http://www.nsi.bg/otrasalen.php?otr=46>).



Table 1

Percentage changes of Industrial Production Indices compared to the previous month¹

| Economic Activities | NACE.BG 2008 Code | 2011 | | | | | |
|---|----------------------|-------------|--------------|-------------|-------------|-------------|-------------|
| | | V | VI | VII | VIII | IX | X |
| Industry | B_TO_E36 | -1.2 | -0.7 | 1.1 | -1.9 | 1.0 | 0.4 |
| Mining and quarrying | B | 10.0 | -13.6 | 11.4 | -5.5 | 9.8 | 9.4 |
| of which: | | | | | | | |
| Mining of coal and lignite | B05 | 5.0 | -14.8 | -4.8 | 7.4 | -1.6 | 1.7 |
| Mining of metal ores | B07 | -0.2 | -7.2 | 41.8 | -17.9 | 20.7 | -5.9 |
| Other mining and quarrying | B08 | 5.4 | -4.8 | 6.3 | -3.5 | -10.7 | 11.8 |
| Manufacturing | C | 1.6 | 0.6 | -0.2 | -3.3 | 3.7 | -0.1 |
| of which: | | | | | | | |
| Manufacture of food products | C10 | -3.7 | 1.1 | 2.3 | -2.7 | 1.5 | 1.6 |
| Manufacture of beverages | C11 | -0.9 | -1.7 | 5.2 | -4.6 | 6.5 | -6.1 |
| Manufacture of tobacco products | C12 | -6.0 | 10.3 | -8.5 | -3.4 | -7.0 | -3.9 |
| Manufacture of textiles | C13 | 0.7 | 2.3 | -11.5 | 19.1 | -13.6 | -4.3 |
| Manufacture of wearing apparel | C14 | 0.4 | 1.7 | 1.4 | -1.2 | -1.3 | -5.0 |
| Manufacture of leather and related products | C15 | 1.6 | 1.8 | 1.4 | -1.6 | 0.3 | -1.9 |
| Manufacture of wood and of products of wood and cork, except furniture; manufacture of articles of straw and plaiting materials | C16 | -7.7 | 10.7 | 2.6 | -1.8 | 0.2 | -3.5 |
| Manufacture of paper and paper products | C17 | 8.2 | -0.2 | -4.9 | -7.7 | -2.5 | -20.3 |
| Printing and reproduction of recorded media | C18 | 5.4 | 0.9 | 2.1 | -11.3 | 2.4 | 13.9 |
| Manufacture of chemicals and chemical products | C20 | 9.5 | -6.2 | 0.3 | 1.4 | -3.5 | -1.9 |
| Manufacture of basic pharmaceutical products and pharmaceutical preparations | C21 | -3.6 | 7.5 | -1.5 | -1.5 | 0.4 | 4.9 |
| Manufacture of rubber and plastic products | C22 | 13.6 | -4.3 | -2.9 | 2.5 | 1.7 | -5.8 |
| Manufacture of other non-metallic mineral products | C23 | 0.6 | 5.2 | -3.9 | -3.7 | 8.3 | -4.0 |
| Manufacture of basic metals | C24 | 10.2 | -6.2 | 4.1 | -6.8 | -10.4 | 18.4 |
| Manufacture of fabricated metal products, except machinery and equipment | C25 | 2.3 | 0.4 | 4.6 | -11.8 | 17.7 | 9.5 |
| Manufacture of computer, electronic and optical products | C26 | 11.7 | 5.7 | 5.6 | -11.3 | -8.5 | 9.1 |
| Manufacture of electrical equipment | C27 | 1.3 | 5.9 | -1.2 | -3.2 | -6.8 | 2.4 |
| Manufacture of machinery and equipment n.e.c. | C28 | 7.9 | 0.6 | -3.0 | -5.4 | 6.7 | -2.1 |
| Manufacture of motor vehicles, trailers and semi-trailers | C29 | 3.6 | -2.8 | 0.9 | -4.9 | 0.0 | 4.3 |
| Manufacture of other transport equipment | C30 | 26.0 | -34.5 | -12.7 | -33.7 | 59.3 | -1.8 |
| Manufacture of furniture | C31 | 3.1 | 2.8 | 2.3 | 2.6 | -2.6 | 3.0 |
| Other manufacturing | C32 | 17.9 | 4.1 | 4.9 | -11.2 | -6.0 | -6.2 |
| Repair and installation of machinery and equipment | C32 | -15.6 | -2.8 | -10.2 | 15.9 | 40.5 | -24.6 |
| Electricity, gas, steam and air conditioning supply | D | -6.3 | -2.9 | 8.7 | -6.4 | -7.0 | 7.3 |
| Electricity, gas, steam and air conditioning supply | D35 | -6.3 | -2.9 | 8.7 | -6.4 | -7.0 | 7.3 |

¹ Seasonally adjusted

Percentage changes of Industrial Production Indices compared to the same month of the previous year¹

| Economic Activities | NACE.BG 2008 Code | 2011 | | | | | |
|---|----------------------|-------------|-------------|-------------|-------------|-------------|-------------|
| | | V | VI | VII | VIII | IX | X |
| Industry | B_TO_E36 | 7.6 | 2.9 | 6.6 | 1.1 | 1.4 | 2.4 |
| Mining and quarrying | B | 20.9 | -4.7 | 10.5 | 7.4 | 7.3 | 13.0 |
| of which: | | | | | | | |
| Mining of coal and lignite | B05 | 64.5 | 17.5 | 12.7 | 20.0 | 14.8 | 9.6 |
| Mining of metal ores | B07 | -13.3 | -25.8 | 5.7 | -12.9 | 2.8 | 16.2 |
| Other mining and quarrying | B08 | 1.5 | -5.6 | 7.6 | 6.7 | -18.2 | 1.4 |
| Manufacturing | C | 5.6 | 5.7 | 6.4 | 1.1 | 2.6 | 2.5 |
| of which: | | | | | | | |
| Manufacture of food products | C10 | -11.3 | -10.0 | -4.8 | -7.8 | -9.9 | -2.8 |
| Manufacture of beverages | C11 | -0.7 | -3.8 | 3.7 | -6.6 | 2.6 | 3.4 |
| Manufacture of tobacco products | C12 | 1.7 | 9.2 | -2.2 | 0.2 | -3.1 | -9.5 |
| Manufacture of textiles | C13 | 10.0 | 16.1 | -6.7 | 27.5 | 0.1 | -3.6 |
| Manufacture of wearing apparel | C14 | 2.8 | 7.7 | 4.8 | 5.1 | -0.3 | -8.0 |
| Manufacture of leather and related products | C15 | 13.2 | 0.7 | 7.4 | -1.6 | 0.7 | -9.4 |
| Manufacture of wood and of products of wood and cork, except furniture; manufacture of articles of straw and plaiting materials | C16 | -1.6 | 6.2 | 2.8 | 2.5 | 0.8 | -7.4 |
| Manufacture of paper and paper products | C17 | 33.8 | 9.6 | 18.8 | -3.9 | -1.9 | -1.5 |
| Printing and reproduction of recorded media | C18 | -10.1 | 6.0 | 4.9 | -8.9 | -18.6 | 0.2 |
| Manufacture of chemicals and chemical products | C20 | 28.9 | 23.8 | 14.4 | 9.0 | 3.4 | 1.2 |
| Manufacture of basic pharmaceutical products and pharmaceutical preparations | C21 | 4.4 | 16.5 | 16.3 | 13.7 | 4.6 | 13.9 |
| Manufacture of rubber and plastic products | C22 | 9.8 | 6.3 | -0.6 | 5.2 | -0.5 | 0.6 |
| Manufacture of other non-metallic mineral products | C23 | 0.6 | 0.8 | 9.2 | 3.6 | 9.9 | 10.3 |
| Manufacture of basic metals | C24 | 16.7 | 13.3 | 12.8 | 7.8 | -11.9 | 9.1 |
| Manufacture of fabricated metal products, except machinery and equipment | C25 | 16.5 | 7.8 | 19.5 | 2.5 | 16.0 | 23.1 |
| Manufacture of computer, electronic and optical products | C26 | 32.5 | 31.3 | 29.6 | 12.2 | 8.3 | 7.7 |
| Manufacture of electrical equipment | C27 | 5.1 | 16.1 | 13.8 | 11.4 | -7.0 | -1.6 |
| Manufacture of machinery and equipment n.e.c. | C28 | 23.0 | 19.5 | 18.1 | 2.5 | 12.2 | 6.3 |
| Manufacture of motor vehicles, trailers and semi-trailers | C29 | -1.2 | -11.5 | 9.2 | 7.4 | -19.1 | -7.7 |
| Manufacture of other transport equipment | C30 | 25.5 | -11.4 | -11.4 | -67.2 | 2.8 | 26.8 |
| Manufacture of furniture | C31 | 15.7 | 16.3 | 19.5 | 18.9 | 1.5 | 11.3 |
| Other manufacturing | C32 | 13.2 | 26.7 | 45.4 | 19.6 | 2.9 | -7.4 |
| Repair and installation of machinery and equipment | C33 | -4.2 | -22.6 | -30.4 | -30.4 | 39.4 | -17.6 |
| Electricity, gas, steam and air conditioning supply | D | 12.6 | -3.1 | 7.3 | -0.6 | -5.3 | -1.8 |
| Electricity, gas, steam and air conditioning supply | D35 | 12.6 | -3.1 | 7.3 | -0.6 | -5.3 | -1.8 |

¹Working day adjusted.

Industrial Production Indices
(Seasonally adjusted, 2005 = 100)

| NACE.BG 2008 Code | 2010 | | | 2011 | | | | | | | | | |
|----------------------|--------------|--------------|--------------|--------------|--------------|--------------|--------------|--------------|--------------|--------------|--------------|--------------|--------------|
| | X | XI | XII | I | II | III | IV | V | VI | VII | VIII | IX | X |
| B_TO_E36 | 100.4 | 101.4 | 100.6 | 103.0 | 101.4 | 102.6 | 104.3 | 103.0 | 102.3 | 103.4 | 101.4 | 102.4 | 102.8 |
| B | 83.0 | 87.7 | 79.3 | 79.3 | 68.9 | 77.2 | 78.3 | 86.1 | 74.4 | 82.9 | 78.3 | 86.0 | 94.1 |
| B05 | 107.5 | 105.7 | 99.5 | 103.5 | 107.1 | 115.4 | 133.6 | 140.3 | 119.6 | 113.8 | 122.2 | 120.3 | 122.4 |
| B07 | 64.0 | 78.4 | 70.1 | 86.8 | 62.0 | 66.2 | 61.0 | 60.9 | 56.5 | 80.1 | 65.8 | 79.4 | 74.7 |
| B08 | 65.2 | 66.4 | 65.0 | 64.3 | 66.1 | 56.4 | 63.5 | 66.9 | 63.7 | 67.7 | 65.3 | 58.3 | 65.2 |
| C | 101.4 | 103.8 | 91.3 | 106.9 | 100.9 | 100.6 | 101.6 | 103.2 | 103.8 | 103.6 | 100.2 | 103.9 | 103.8 |
| C10 | 115.6 | 121.3 | 114.6 | 118.6 | 119.1 | 111.1 | 112.0 | 107.9 | 109.1 | 111.6 | 108.6 | 110.2 | 112.0 |
| C11 | 81.6 | 89.8 | 82.9 | 91.7 | 94.3 | 85.3 | 87.7 | 86.9 | 85.4 | 89.8 | 85.7 | 91.3 | 85.7 |
| C12 | 91.3 | 95.4 | 101.2 | 114.7 | 112.1 | 102.2 | 106.2 | 99.8 | 110.1 | 100.7 | 97.3 | 90.5 | 87.0 |
| C13 | 67.9 | 66.1 | 63.3 | 69.5 | 69.8 | 66.6 | 74.3 | 74.8 | 76.5 | 67.7 | 80.6 | 69.6 | 66.6 |
| C14 | 71.5 | 70.8 | 69.0 | 70.8 | 71.4 | 67.7 | 69.6 | 69.9 | 71.1 | 72.1 | 71.2 | 70.3 | 66.8 |
| C15 | 78.1 | 77.7 | 77.7 | 76.3 | 75.9 | 78.3 | 77.0 | 78.2 | 79.6 | 80.7 | 79.4 | 79.6 | 78.1 |
| C16 | 93.0 | 84.5 | 83.3 | 88.3 | 87.4 | 83.1 | 86.1 | 79.5 | 88.0 | 90.3 | 88.7 | 88.9 | 85.8 |
| C17 | 108.2 | 134.6 | 131.4 | 150.0 | 138.2 | 147.4 | 148.9 | 161.1 | 160.7 | 152.9 | 141.2 | 137.6 | 109.7 |
| C18 | 112.9 | 111.7 | 106.7 | 112.9 | 112.3 | 109.0 | 99.9 | 105.3 | 106.3 | 108.5 | 96.2 | 98.5 | 112.2 |
| C20 | 103.5 | 118.3 | 94.7 | 117.2 | 120.8 | 101.6 | 108.3 | 118.6 | 111.2 | 111.5 | 113.1 | 109.1 | 107.0 |
| C21 | 91.8 | 84.2 | 85.5 | 84.0 | 89.6 | 90.2 | 95.0 | 91.6 | 98.5 | 97.0 | 95.5 | 95.9 | 100.6 |
| C22 | 112.1 | 119.0 | 114.2 | 120.6 | 119.9 | 115.0 | 108.7 | 123.5 | 118.2 | 114.8 | 117.7 | 119.7 | 112.8 |
| C23 | 78.9 | 85.6 | 75.5 | 88.7 | 92.6 | 89.7 | 85.6 | 86.1 | 90.6 | 87.1 | 83.9 | 90.9 | 87.3 |
| C24 | 101.1 | 92.6 | 92.9 | 105.2 | 98.1 | 98.8 | 103.2 | 113.7 | 106.6 | 111.0 | 103.5 | 92.7 | 109.8 |
| C25 | 106.6 | 110.3 | 88.0 | 113.2 | 90.0 | 108.4 | 106.2 | 108.6 | 109.0 | 114.0 | 100.6 | 118.4 | 129.6 |
| C26 | 115.1 | 114.8 | 118.1 | 126.8 | 130.8 | 120.1 | 112.4 | 125.6 | 132.8 | 140.3 | 124.4 | 113.8 | 124.1 |
| C27 | 146.1 | 140.9 | 141.6 | 153.5 | 156.4 | 152.7 | 151.3 | 153.2 | 162.3 | 160.3 | 155.2 | 144.7 | 148.2 |
| C28 | 115.7 | 113.1 | 108.3 | 113.7 | 118.9 | 123.1 | 119.2 | 128.6 | 129.4 | 125.5 | 118.7 | 126.6 | 124.0 |
| C29 | 161.6 | 162.9 | 164.7 | 157.8 | 151.1 | 150.6 | 150.5 | 155.9 | 151.6 | 152.9 | 145.4 | 145.4 | 151.7 |
| C30 | 55.3 | 60.2 | 70.6 | 110.7 | 92.5 | 95.0 | 96.7 | 121.8 | 79.8 | 69.7 | 46.2 | 73.6 | 72.3 |
| C31 | 105.7 | 109.4 | 98.5 | 108.6 | 106.5 | 104.0 | 104.9 | 108.1 | 111.1 | 113.6 | 116.5 | 113.5 | 116.9 |
| C32 | 139.7 | 165.5 | 146.3 | 167.8 | 143.6 | 138.4 | 130.2 | 153.5 | 159.8 | 167.6 | 148.8 | 139.8 | 131.1 |
| C33 | 119.7 | 104.1 | 124.7 | 117.5 | 113.8 | 101.7 | 108.8 | 91.8 | 89.2 | 80.1 | 92.8 | 130.4 | 98.3 |
| D | 115.4 | 103.9 | 107.4 | 106.5 | 115.1 | 116.4 | 123.1 | 115.4 | 112.1 | 121.9 | 114.1 | 106.1 | 113.8 |
| D35 | 115.4 | 103.9 | 107.4 | 106.5 | 115.1 | 116.4 | 123.1 | 115.4 | 112.1 | 121.9 | 114.1 | 106.1 | 113.8 |



Table 4

Industrial Production Indices
(Working day adjusted, 2005 = 100)

| NACE.BG 2008 Code | 2008 | 2009 | 2010 | | | 2011 | | | | | | | | | |
|----------------------|--------------|--------------|--------------|--------------|--------------|--------------|--------------|--------------|--------------|--------------|--------------|--------------|--------------|--------------|--------------|
| | X | X | X | XI | XII | I | II | III | IV | V | VI | VII | VIII | IX | X |
| B_TO_E36 | 117.9 | 100.3 | 105.0 | 107.4 | 107.1 | 94.9 | 95.0 | 105.3 | 101.9 | 103.4 | 105.3 | 108.2 | 99.4 | 105.0 | 107.5 |
| B | 77.8 | 92.4 | 83.6 | 88.2 | 79.8 | 79.8 | 69.3 | 77.7 | 78.8 | 86.6 | 74.8 | 83.3 | 78.7 | 86.4 | 94.5 |
| B05 | 103.3 | 121.4 | 129.3 | 125.4 | 110.2 | 117.1 | 112.1 | 112.7 | 113.9 | 131.9 | 108.3 | 108.2 | 113.2 | 122.5 | 141.7 |
| B07 | 44.0 | 90.9 | 69.0 | 80.9 | 73.5 | 75.9 | 53.4 | 68.0 | 67.2 | 70.5 | 61.1 | 80.3 | 63.7 | 80.1 | 80.2 |
| B08 | 146.3 | 79.1 | 72.8 | 74.3 | 71.9 | 41.6 | 53.3 | 53.6 | 62.2 | 74.2 | 68.5 | 70.8 | 68.9 | 63.0 | 73.8 |
| C | 122.8 | 99.1 | 105.9 | 108.6 | 103.3 | 88.4 | 89.2 | 104.0 | 99.9 | 107.6 | 111.5 | 110.2 | 100.4 | 110.0 | 108.6 |
| C10 | 140.0 | 117.4 | 126.5 | 130.7 | 126.9 | 100.2 | 102.4 | 110.6 | 108.5 | 112.5 | 112.0 | 112.6 | 112.2 | 122.8 | 122.9 |
| C11 | 110.0 | 91.1 | 73.8 | 88.3 | 102.3 | 57.8 | 62.4 | 78.8 | 86.0 | 98.0 | 101.7 | 111.6 | 107.2 | 100.9 | 76.3 |
| C12 | 154.1 | 139.1 | 117.4 | 113.0 | 104.6 | 80.3 | 73.7 | 87.2 | 91.4 | 108.4 | 126.7 | 117.0 | 115.8 | 108.9 | 106.3 |
| C13 | 93.5 | 67.5 | 70.3 | 71.7 | 58.8 | 57.0 | 69.0 | 76.1 | 81.7 | 89.3 | 90.8 | 73.5 | 64.9 | 70.1 | 67.8 |
| C14 | 92.5 | 73.1 | 73.8 | 74.1 | 75.8 | 70.2 | 71.7 | 69.0 | 63.9 | 68.9 | 74.0 | 83.7 | 69.7 | 72.4 | 67.9 |
| C15 | 123.1 | 84.6 | 84.8 | 76.0 | 71.7 | 75.7 | 74.1 | 84.1 | 69.7 | 70.5 | 81.3 | 98.2 | 75.7 | 89.6 | 76.8 |
| C16 | 121.4 | 76.8 | 100.6 | 93.3 | 82.4 | 72.0 | 76.3 | 82.9 | 84.7 | 81.0 | 93.9 | 95.8 | 90.5 | 97.3 | 93.2 |
| C17 | 106.5 | 78.4 | 111.5 | 137.6 | 133.4 | 144.4 | 130.3 | 149.2 | 149.6 | 164.8 | 166.4 | 156.8 | 141.6 | 142.3 | 109.8 |
| C18 | 141.1 | 130.3 | 123.0 | 121.8 | 128.0 | 93.7 | 97.7 | 104.4 | 96.6 | 108.1 | 111.6 | 108.9 | 100.8 | 109.3 | 123.2 |
| C20 | 114.3 | 84.7 | 99.9 | 125.0 | 93.6 | 106.7 | 114.1 | 107.1 | 109.9 | 118.8 | 115.5 | 112.2 | 105.1 | 110.8 | 101.1 |
| C21 | 109.7 | 86.2 | 101.0 | 91.7 | 91.2 | 72.6 | 90.9 | 99.5 | 96.0 | 98.2 | 114.8 | 85.4 | 95.7 | 102.1 | 115.0 |
| C22 | 147.4 | 121.3 | 125.7 | 129.3 | 114.3 | 97.4 | 102.9 | 118.7 | 108.1 | 124.8 | 128.3 | 126.4 | 119.9 | 129.1 | 126.4 |
| C23 | 166.8 | 89.8 | 90.5 | 94.2 | 72.9 | 58.5 | 70.0 | 85.6 | 87.8 | 95.3 | 100.2 | 97.1 | 89.6 | 103.5 | 99.8 |
| C24 | 106.1 | 108.2 | 107.5 | 94.4 | 77.8 | 94.5 | 96.5 | 108.5 | 103.9 | 115.9 | 106.3 | 118.9 | 100.8 | 83.9 | 117.3 |
| C25 | 123.4 | 83.7 | 103.7 | 116.9 | 112.4 | 81.5 | 79.6 | 112.1 | 107.5 | 110.2 | 117.9 | 118.7 | 100.9 | 124.0 | 127.7 |
| C26 | 91.2 | 105.4 | 115.1 | 119.3 | 156.6 | 106.9 | 109.5 | 124.0 | 108.5 | 129.1 | 136.6 | 136.7 | 111.0 | 123.3 | 124.0 |
| C27 | 183.0 | 151.3 | 170.7 | 160.3 | 146.8 | 142.8 | 145.8 | 155.3 | 146.5 | 154.4 | 169.7 | 169.1 | 140.0 | 161.5 | 168.0 |
| C28 | 142.8 | 99.0 | 124.1 | 122.2 | 116.9 | 97.1 | 109.6 | 131.2 | 117.5 | 132.3 | 142.7 | 135.2 | 108.7 | 134.9 | 131.9 |
| C29 | 131.6 | 137.7 | 169.9 | 162.1 | 158.2 | 156.5 | 130.4 | 150.0 | 139.5 | 160.2 | 154.6 | 147.8 | 132.7 | 129.9 | 156.9 |
| C30 | 135.8 | 132.4 | 49.7 | 54.1 | 93.8 | 56.2 | 65.6 | 91.9 | 76.8 | 179.9 | 80.0 | 76.2 | 48.3 | 80.5 | 63.0 |
| C31 | 165.3 | 91.2 | 114.1 | 120.9 | 112.8 | 91.9 | 95.1 | 108.8 | 103.9 | 114.9 | 117.8 | 117.1 | 116.3 | 120.8 | 127.0 |
| C32 | 151.2 | 194.5 | 164.2 | 183.3 | 143.0 | 133.9 | 124.2 | 137.8 | 126.7 | 164.8 | 179.0 | 167.2 | 146.8 | 155.1 | 152.0 |
| C33 | 120.9 | 101.0 | 124.7 | 111.0 | 170.5 | 80.6 | 93.7 | 101.7 | 100.1 | 86.5 | 94.3 | 83.2 | 91.6 | 144.0 | 102.7 |
| D | 117.5 | 106.9 | 111.4 | 112.8 | 134.6 | 125.6 | 128.5 | 129.2 | 115.6 | 97.5 | 96.9 | 112.0 | 103.2 | 93.8 | 109.4 |
| D35 | 117.5 | 106.9 | 111.4 | 112.8 | 134.6 | 125.6 | 128.5 | 129.2 | 115.6 | 97.5 | 96.9 | 112.0 | 103.2 | 93.8 | 109.4 |