

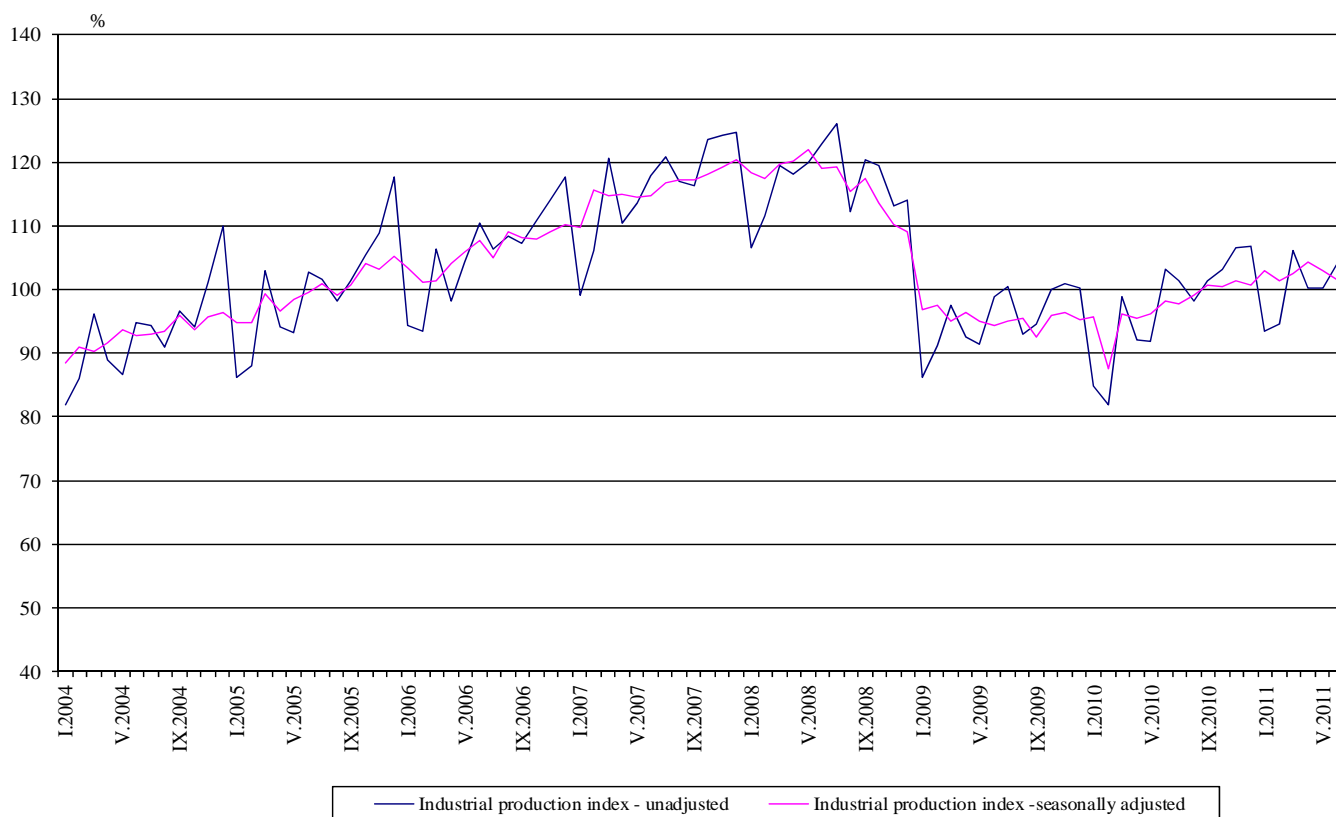


## Industrial Production Indices in June 2011<sup>1</sup>

The preliminary data showed that the Industrial Production Index<sup>2</sup>, seasonally adjusted<sup>3</sup>, decreased by 1.5% in June 2011 as compared to May 2011.

In June 2011 working day adjusted<sup>4</sup> Industrial Production Index rose by 2.2% as compared to the same month of 2010.

**Figure 1. Industrial Production Indices (2005 = 100)**



<sup>1</sup>June 2011 data are preliminary.

<sup>2</sup> Monthly Industrial Production and Industrial turnover indices measure changes in **production and turnover values** of industrial enterprises. This information can be used to access the current economic development and for short-term forecasts. Indices do not measure the actual production level, it aims to measure the average change in value of production between two points of time

Indices are compiled on the base of information collected through representative sampling survey on industrial enterprises. The sample covers enterprises with annual turnover more than 97% of total turnover in industry.

Industrial production indices are calculated at constant base year (2005) that is to say they are weighted with the structure of the value added at factor costs in the base year.

<sup>3</sup> **Seasonal adjustment** is a statistical method, which eliminates the seasonal component of time series and it is particularly suitable for long-term comparisons and analysis of the data.

<sup>4</sup> **Working day adjustment** is an adjustment for variations caused by calendar effects, different number of calendar and working days in the months, national holidays and outliers (for example the presence of more non-working days in May could contribute to the decline in the production in some activities).

The seasonally and working day adjusted data on Industrial production index for the period 2000-2010 can be found in NSI internet web-site: (<http://www.nsi.bg/otrasalen.php?otr=46>).

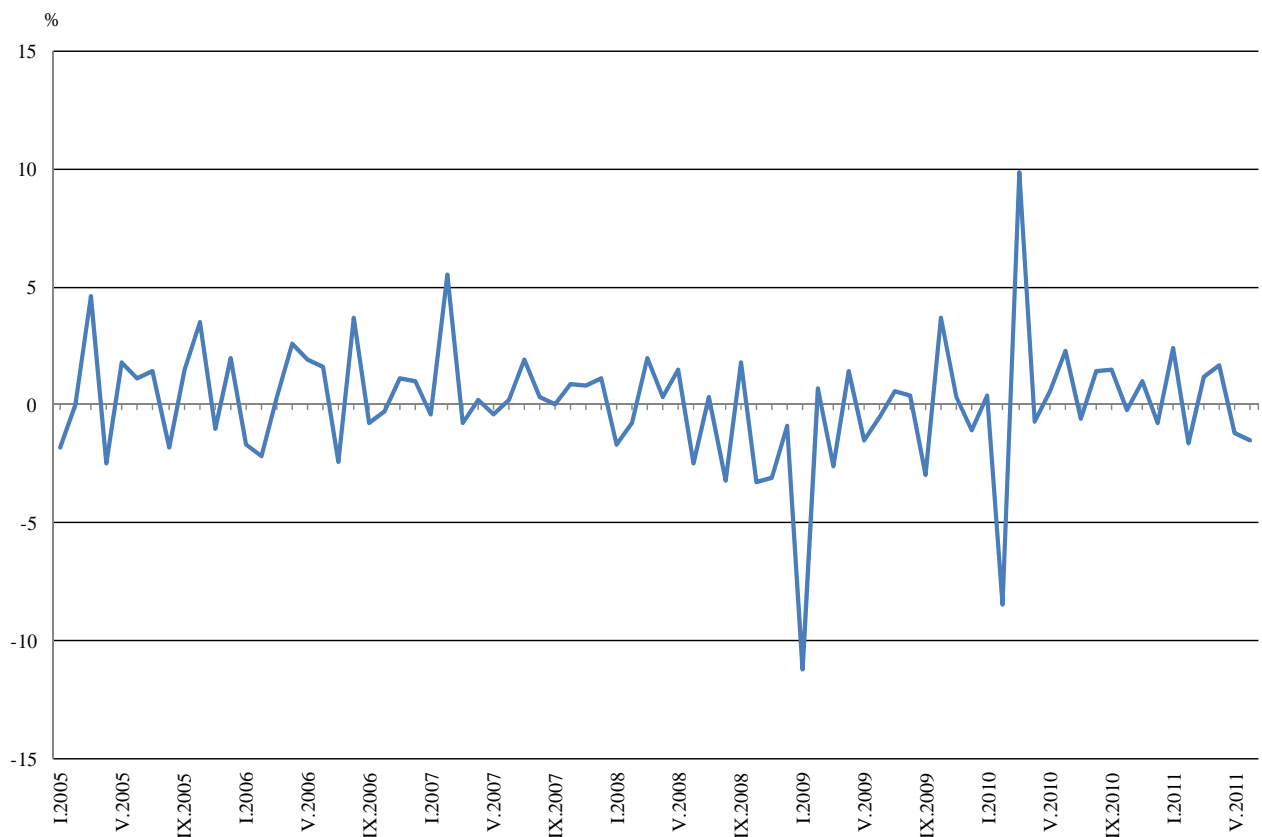


### Monthly comparisons

In June 2011 as compared to May 2011, the seasonally adjusted Industrial Production Index in the mining and quarrying industry decreased by 14.2%, in the electricity, gas, steam and air conditioning supply by 3.1% and in the manufacturing by 0.4%.

The most significant decreases of production in the manufacturing were seen in the manufacture of chemicals and chemical products by 9.9%, in the manufacture of basic metals by 8.0%, in the manufacture of rubber and plastic products by 5.3%. There was increase in the manufacture of wood and of products of wood and cork, except furniture; manufacture of articles of straw and plaiting materials by 12.6%, in the manufacture of basic pharmaceutical products and pharmaceutical preparations by 7.5%, in the manufacture of tobacco products by 7.4%.

**Figure 2. Percentage changes of Industrial Production Indices compared to the previous month (Seasonally adjusted)**



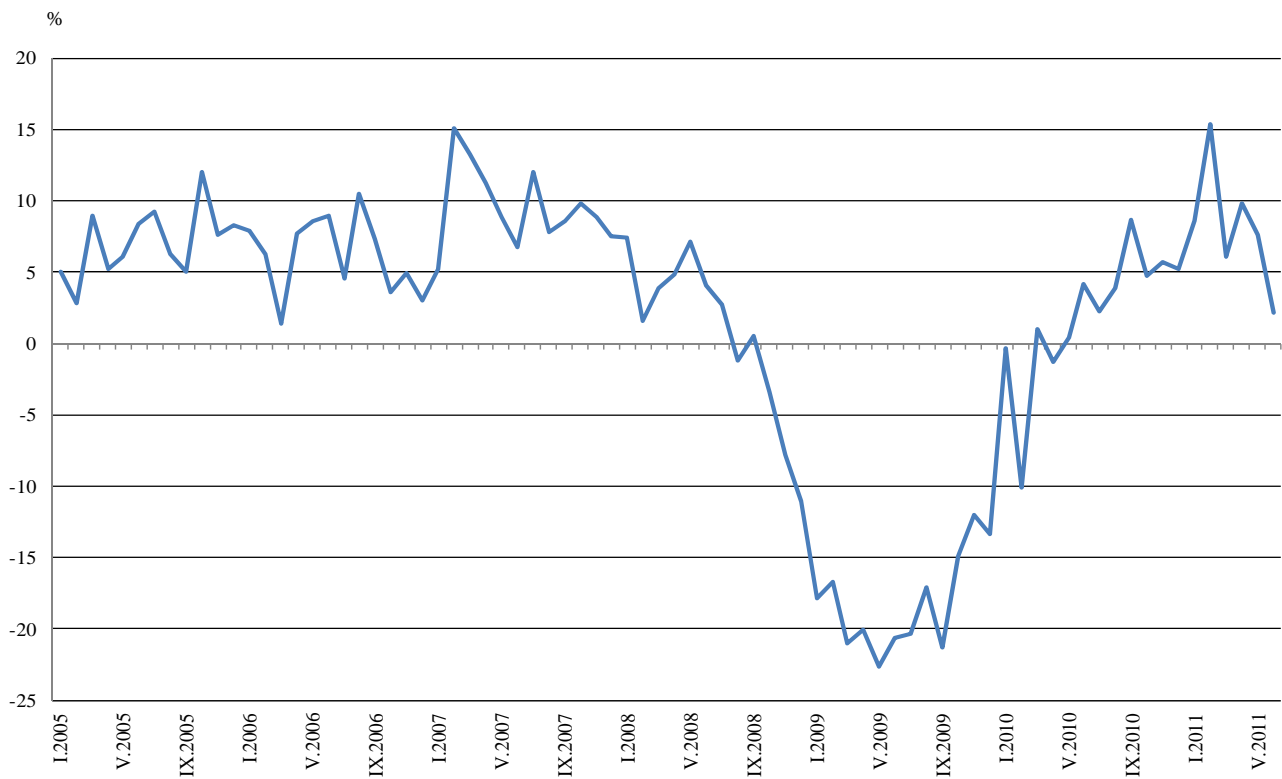


### Annual comparisons

On annual bases in June 2011 Industrial Production Index, calculated from working day adjusted data in the manufacturing grew by 4.5%, while decreases were seen in the mining and quarrying industry by 5.4% and in the electricity, gas, steam and air conditioning supply by 2.8%.

Increases were registered in the production of intermediate goods by 5.8% and in the production of investment goods by 1.6%, while the production of energy went down by 1.5%.

**Figure 3. Percentage changes of Industrial Production Indices compared to the same month of the previous year**  
( Working day adjusted)



The final data on Industrial Production and Turnover Indices for May 2011 can be found in NSI internet web-site: (<http://www.nsi.bg/otrasalen.php?otr=46>).

**Percentage changes of Industrial Production Indices compared to the previous month<sup>1</sup>**

Economic Activities	NACE.BG 2008 Code	2011					
		I	II	III	IV	V	VI
<b>Industry</b>	<b>B_TO_E36</b>	<b>2.4</b>	<b>-1.6</b>	<b>1.2</b>	<b>1.7</b>	<b>-1.2</b>	<b>-1.5</b>
<b>Mining and quarrying</b>	<b>B</b>	<b>0.0</b>	<b>-13.1</b>	<b>12.0</b>	<b>1.4</b>	<b>10.0</b>	<b>-14.2</b>
of which:							
Mining of coal and lignite	B05	4.0	3.5	7.7	15.8	5.0	-13.9
Mining of metal ores	B07	23.8	-28.6	6.8	-7.9	-0.2	-8.9
Other mining and quarrying	B08	-1.1	2.8	-14.7	12.6	5.4	-7.0
<b>Manufacturing</b>	<b>C</b>	<b>17.1</b>	<b>-5.6</b>	<b>-0.3</b>	<b>1.0</b>	<b>1.6</b>	<b>-0.4</b>
of which:							
Manufacture of food products	C10	3.5	0.4	-6.7	0.8	-3.7	0.3
Manufacture of beverages	C11	10.6	2.8	-9.5	2.8	-0.9	-3.3
Manufacture of tobacco products	C12	13.3	-2.3	-8.8	3.9	-6.0	7.4
Manufacture of textiles	C13	9.8	0.4	-4.6	11.6	0.7	2.5
Manufacture of wearing apparel	C14	2.6	0.8	-5.2	2.8	0.4	-0.1
Manufacture of leather and related products	C15	-1.8	-0.5	3.2	-1.7	1.6	0.0
Manufacture of wood and of products of wood and cork, except furniture; manufacture of articles of straw and plaiting materials	C16	6.0	-1.0	-4.9	3.6	-7.7	12.6
Manufacture of paper and paper products	C17	14.2	-7.9	6.7	1.0	8.2	0.1
Printing and reproduction of recorded media	C18	5.8	-0.5	-2.9	-8.3	5.4	1.2
Manufacture of chemicals and chemical products	C20	23.8	3.1	-15.9	6.6	9.5	-9.9
Manufacture of basic pharmaceutical products and pharmaceutical preparations	C21	-1.8	6.7	0.7	5.3	-3.6	7.5
Manufacture of rubber and plastic products	C22	5.6	-0.6	-4.1	-5.5	13.6	-5.3
Manufacture of other non-metallic mineral products	C23	17.5	4.4	-3.1	-4.6	0.6	4.5
Manufacture of basic metals	C24	13.2	-6.7	0.7	4.5	10.2	-8.0
Manufacture of fabricated metal products, except machinery and equipment	C25	28.6	-20.5	20.4	-2.0	2.3	-0.6
Manufacture of computer, electronic and optical products	C26	7.4	3.2	-8.2	-6.4	11.7	6.2
Manufacture of electrical equipment	C27	8.4	1.9	-2.4	-0.9	1.3	5.4
Manufacture of machinery and equipment n.e.c.	C28	5.0	4.6	3.5	-3.2	7.9	0.6
Manufacture of motor vehicles, trailers and semi-trailers	C29	-4.2	-4.2	-0.3	-0.1	3.6	-2.6
Manufacture of other transport equipment	C30	56.8	-16.4	2.7	1.8	26.0	-41.5
Manufacture of furniture	C31	10.3	-1.9	-2.3	0.9	3.1	2.8
Other manufacturing	C32	14.7	-14.4	-3.6	-5.9	17.9	2.4
Repair and installation of machinery and equipment	C32	-5.8	-3.1	-10.6	7.0	-15.6	-2.0
<b>Electricity, gas, steam and air conditioning supply</b>	<b>D</b>	<b>-0.8</b>	<b>8.1</b>	<b>1.1</b>	<b>5.8</b>	<b>-6.3</b>	<b>-3.1</b>
Electricity, gas, steam and air conditioning supply	D35	-0.8	8.1	1.1	5.8	-6.3	-3.1

<sup>1</sup> Seasonally adjusted.

**Percentage changes of Industrial Production Indices compared to the same month of the previous year<sup>1</sup>**

Economic Activities	NACE.BG 2008 Code	2011					
		I	II	III	IV	V	VI
<b>Industry</b>	<b>B_TO_E36</b>	<b>8.6</b>	<b>15.4</b>	<b>6.1</b>	<b>9.8</b>	<b>7.6</b>	<b>2.2</b>
<b>Mining and quarrying</b>	<b>B</b>	<b>15.5</b>	<b>-1.0</b>	<b>3.2</b>	<b>16.1</b>	<b>20.9</b>	<b>-5.4</b>
of which:							
Mining of coal and lignite	B05	12.3	11.2	25.1	101.6	64.5	17.2
Mining of metal ores	B07	16.6	-20.2	-13.7	-26.2	-13.3	-26.6
Other mining and quarrying	B08	-12.4	-1.8	-22.9	7.8	1.5	-7.4
<b>Manufacturing</b>	<b>C</b>	<b>13.3</b>	<b>22.5</b>	<b>7.7</b>	<b>5.8</b>	<b>5.6</b>	<b>4.5</b>
of which:							
Manufacture of food products	C10	5.3	7.0	-0.6	3.2	-11.3	-10.8
Manufacture of beverages	C11	6.8	21.2	-7.8	0.4	-0.7	-4.8
Manufacture of tobacco products	C12	32.3	53.5	-9.5	26.2	1.7	5.1
Manufacture of textiles	C13	16.3	22.1	3.5	7.2	10.0	13.3
Manufacture of wearing apparel	C14	4.6	11.2	0.6	3.9	2.8	5.8
Manufacture of leather and related products	C15	-5.6	-14.2	9.2	1.8	13.2	0.5
Manufacture of wood and of products of wood and cork, except furniture; manufacture of articles of straw and plaiting materials	C16	32.4	24.9	3.8	5.1	-1.6	8.1
Manufacture of paper and paper products	C17	57.8	33.5	32.4	34.2	33.8	9.7
Printing and reproduction of recorded media	C18	-7.1	4.5	-4.7	-15.1	-10.1	6.4
Manufacture of chemicals and chemical products	C20	42.5	51.3	9.5	19.1	28.9	16.9
Manufacture of basic pharmaceutical products and pharmaceutical preparations	C21	-9.4	7.7	15.0	15.1	4.4	17.2
Manufacture of rubber and plastic products	C22	15.5	28.5	10.5	2.6	9.8	4.9
Manufacture of other non-metallic mineral products	C23	29.4	31.8	16.9	13.4	0.6	0.0
Manufacture of basic metals	C24	13.3	-2.5	0.5	1.7	16.7	11.1
Manufacture of fabricated metal products, except machinery and equipment	C25	42.0	-11.5	11.7	18.9	16.5	6.9
Manufacture of computer, electronic and optical products	C26	23.4	23.4	23.3	3.6	32.5	32.0
Manufacture of electrical equipment	C27	1.5	18.8	6.3	9.1	5.1	14.9
Manufacture of machinery and equipment n.e.c.	C28	19.9	22.6	22.8	13.3	23.0	18.9
Manufacture of motor vehicles, trailers and semi-trailers	C29	15.3	-10.6	-12.2	-14.7	-1.2	-9.7
Manufacture of other transport equipment	C30	26.0	11.4	2.8	9.6	25.5	-25.2
Manufacture of furniture	C31	21.4	19.0	10.2	12.4	15.7	16.4
Other manufacturing	C32	30.1	8.9	-5.0	-8.4	13.2	24.8
Repair and installation of machinery and equipment	C33	13.7	3.9	-15.8	-6.4	-4.2	-22.6
<b>Electricity, gas, steam and air conditioning supply</b>	<b>D</b>	<b>-2.4</b>	<b>5.9</b>	<b>7.6</b>	<b>18.3</b>	<b>12.6</b>	<b>-2.8</b>
Electricity, gas, steam and air conditioning supply	D35	-2.4	5.9	7.6	18.3	12.6	-2.8

<sup>1</sup> Working day adjusted.

**Industrial Production Indices**  
(Seasonally adjusted, 2005 = 100)

NACE.BG 2008 Code	2010							2011					
	VI	VII	VIII	IX	X	XI	XII	I	II	III	V	V	VI
<b>B_TO_E36</b>	<b>98.3</b>	<b>97.7</b>	<b>99.1</b>	<b>100.6</b>	<b>100.4</b>	<b>101.4</b>	<b>100.6</b>	<b>103.0</b>	<b>101.4</b>	<b>102.6</b>	<b>104.3</b>	<b>103.0</b>	<b>101.5</b>
<b>B</b>	<b>78.0</b>	<b>74.9</b>	<b>72.8</b>	<b>80.0</b>	<b>83.0</b>	<b>87.7</b>	<b>79.3</b>	<b>79.3</b>	<b>68.9</b>	<b>77.2</b>	<b>78.3</b>	<b>86.1</b>	<b>73.9</b>
<b>B05</b>	102.6	96.4	102.3	102.2	107.5	105.7	99.5	103.5	107.1	115.4	133.6	140.3	120.8
<b>B07</b>	76.5	77.0	74.8	77.8	64.0	78.4	70.1	86.8	62.0	66.2	61.0	60.9	55.5
<b>B08</b>	67.4	64.3	62.2	69.4	65.2	66.4	65.0	64.3	66.1	56.4	63.5	66.9	62.2
<b>C</b>	<b>98.3</b>	<b>97.4</b>	<b>98.9</b>	<b>101.3</b>	<b>101.4</b>	<b>103.8</b>	<b>91.3</b>	<b>106.9</b>	<b>100.9</b>	<b>100.6</b>	<b>101.6</b>	<b>103.2</b>	<b>102.8</b>
<b>C10</b>	120.9	117.3	117.7	122.5	115.6	121.3	114.6	118.6	119.1	111.1	112.0	107.9	108.2
<b>C11</b>	87.2	88.5	90.3	91.1	81.6	89.8	82.9	91.7	94.3	85.3	87.7	86.9	84.0
<b>C12</b>	104.1	102.8	95.4	89.1	91.3	95.4	101.2	114.7	112.1	102.2	106.2	99.8	107.2
<b>C13</b>	69.0	69.8	66.3	69.6	67.9	66.1	63.3	69.5	69.8	66.6	74.3	74.8	76.7
<b>C14</b>	66.4	70.1	68.1	71.7	71.5	70.8	69.0	70.8	71.4	67.7	69.6	69.9	69.8
<b>C15</b>	77.4	77.2	78.6	79.2	78.1	77.7	77.7	76.3	75.9	78.3	77.0	78.2	78.2
<b>C16</b>	82.5	88.0	86.6	88.3	93.0	84.5	83.3	88.3	87.4	83.1	86.1	79.5	89.5
<b>C17</b>	146.9	128.6	146.5	140.1	108.2	134.6	131.4	150.0	138.2	147.4	148.9	161.1	161.2
<b>C18</b>	100.2	103.8	105.0	120.1	112.9	111.7	106.7	112.9	112.3	109.0	99.9	105.3	106.6
<b>C20</b>	88.4	96.2	102.7	104.5	103.5	118.3	94.7	117.2	120.8	101.6	108.3	118.6	106.9
<b>C21</b>	89.0	86.1	85.4	92.4	91.8	84.2	85.5	84.0	89.6	90.2	95.0	91.6	98.5
<b>C22</b>	111.5	115.4	112.1	120.9	112.1	119.0	114.2	120.6	119.9	115.0	108.7	123.5	116.9
<b>C23</b>	90.2	79.7	80.4	82.6	78.9	85.6	75.5	88.7	92.6	89.7	85.6	86.1	90.0
<b>C24</b>	93.6	99.0	96.4	99.6	101.1	92.6	92.9	105.2	98.1	98.8	103.2	113.7	104.6
<b>C25</b>	101.3	96.1	97.4	102.1	106.6	110.3	88.0	113.2	90.0	108.4	106.2	108.6	108.0
<b>C26</b>	101.3	109.1	110.7	103.8	115.1	114.8	118.1	126.8	130.8	120.1	112.4	125.6	133.4
<b>C27</b>	143.6	142.2	140.1	148.5	146.1	140.9	141.6	153.5	156.4	152.7	151.3	153.2	161.5
<b>C28</b>	110.0	107.4	113.4	112.9	115.7	113.1	108.3	113.7	118.9	123.1	119.2	128.6	129.4
<b>C29</b>	160.1	152.8	154.5	161.6	161.6	162.9	164.7	157.8	151.1	150.6	150.5	155.9	151.8
<b>C30</b>	86.9	76.9	112.1	69.9	55.3	60.2	70.6	110.7	92.5	95.0	96.7	121.8	71.3
<b>C31</b>	96.0	95.5	99.0	111.9	105.7	109.4	98.5	108.6	106.5	104.0	104.9	108.1	111.1
<b>C32</b>	126.3	116.7	124.1	134.9	139.7	165.5	146.3	167.8	143.6	138.4	130.2	153.5	157.2
<b>C33</b>	114.0	111.7	130.7	99.4	119.7	104.1	124.7	117.5	113.8	101.7	108.8	91.8	90.0
<b>D</b>	<b>114.1</b>	<b>115.6</b>	<b>114.7</b>	<b>109.2</b>	<b>115.4</b>	<b>103.9</b>	<b>107.4</b>	<b>106.5</b>	<b>115.1</b>	<b>116.4</b>	<b>123.1</b>	<b>115.4</b>	<b>111.8</b>
<b>D35</b>	114.1	115.6	114.7	109.2	115.4	103.9	107.4	106.5	115.1	116.4	123.1	115.4	111.8

**Industrial Production Indices**  
(Working day adjusted, 2005 = 100)

NACE.BG 2008 Code	2008	2009	2010						2011						
	VI	VI	VI	VII	VIII	IX	X	XI	XII	I	II	III	IV	V	VI
<b>B_TO_E36</b>	<b>123.6</b>	<b>98.2</b>	<b>102.3</b>	<b>101.5</b>	<b>98.3</b>	<b>103.5</b>	<b>105.0</b>	<b>107.4</b>	<b>107.1</b>	<b>94.9</b>	<b>95.0</b>	<b>105.3</b>	<b>101.9</b>	<b>103.4</b>	<b>104.5</b>
<b>B</b>	<b>97.8</b>	<b>68.6</b>	<b>78.5</b>	<b>75.4</b>	<b>73.3</b>	<b>80.5</b>	<b>83.6</b>	<b>88.2</b>	<b>79.8</b>	<b>79.8</b>	<b>69.3</b>	<b>77.7</b>	<b>78.8</b>	<b>86.6</b>	<b>74.3</b>
<b>B05</b>	111.2	68.4	92.2	96.0	94.3	106.7	129.3	125.4	110.2	117.1	112.1	112.7	113.9	131.9	108.1
<b>B07</b>	85.7	71.8	82.4	76.0	73.1	77.9	69.0	80.9	73.5	75.9	53.4	68.0	67.2	70.5	60.5
<b>B08</b>	140.8	88.9	72.6	65.8	64.6	77.0	72.8	74.3	71.9	41.6	53.3	53.6	62.2	74.2	67.2
<b>C</b>	<b>131.6</b>	<b>99.7</b>	<b>105.5</b>	<b>103.6</b>	<b>99.3</b>	<b>107.2</b>	<b>105.9</b>	<b>108.6</b>	<b>103.3</b>	<b>88.4</b>	<b>89.2</b>	<b>104.0</b>	<b>99.9</b>	<b>107.6</b>	<b>110.3</b>
<b>C10</b>	124.7	114.5	124.5	118.3	121.7	136.3	126.5	130.7	126.9	100.2	102.4	110.6	108.5	112.5	111.1
<b>C11</b>	165.8	116.8	105.7	107.6	114.8	98.3	73.8	88.3	102.3	57.8	62.4	78.8	86.0	98.0	100.6
<b>C12</b>	131.5	110.5	116.0	119.6	115.6	112.4	117.4	113.0	104.6	80.3	73.7	87.2	91.4	108.4	121.9
<b>C13</b>	120.8	75.6	78.2	78.8	50.9	70.0	70.3	71.7	58.8	57.0	69.0	76.1	81.7	89.3	88.6
<b>C14</b>	103.7	79.0	68.7	79.9	66.3	72.6	73.8	74.1	75.8	70.2	71.7	69.0	63.9	68.9	72.7
<b>C15</b>	111.4	80.1	80.7	91.4	76.9	89.0	84.8	76.0	71.7	75.7	74.1	84.1	69.7	70.5	81.1
<b>C16</b>	127.7	76.5	88.4	93.2	88.3	96.5	100.6	93.3	82.4	72.0	76.3	82.9	84.7	81.0	95.6
<b>C17</b>	114.3	65.6	151.8	132.0	147.3	145.0	111.5	137.6	133.4	144.4	130.3	149.2	149.6	164.8	166.6
<b>C18</b>	111.4	144.1	105.3	103.8	110.7	134.3	123.0	121.8	128.0	93.7	97.7	104.4	96.6	108.1	112.0
<b>C20</b>	139.7	81.3	93.3	98.1	96.4	107.2	99.9	125.0	93.6	106.7	114.1	107.1	109.9	118.8	109.1
<b>C21</b>	124.2	78.5	98.5	73.4	84.2	97.6	101.0	91.7	91.2	72.6	90.9	99.5	96.0	98.2	115.4
<b>C22</b>	136.7	114.5	120.7	127.1	114.0	129.7	125.7	129.3	114.3	97.4	102.9	118.7	108.1	124.8	126.6
<b>C23</b>	162.7	99.8	99.4	88.9	86.5	94.2	90.5	94.2	72.9	58.5	70.0	85.6	87.8	95.3	99.4
<b>C24</b>	124.8	93.7	93.8	105.4	93.5	95.2	107.5	94.4	77.8	94.5	96.5	108.5	103.9	115.9	104.2
<b>C25</b>	137.3	87.6	109.4	99.3	98.4	106.9	103.7	116.9	112.4	81.5	79.6	112.1	107.5	110.2	117.0
<b>C26</b>	105.3	115.5	104.0	105.5	98.9	113.8	115.1	119.3	156.6	106.9	109.5	124.0	108.5	129.1	137.3
<b>C27</b>	170.7	126.3	146.2	148.6	125.7	173.6	170.7	160.3	146.8	142.8	145.8	155.3	146.5	154.4	168.0
<b>C28</b>	146.1	108.7	119.4	114.5	106.1	120.2	124.1	122.2	116.9	97.1	109.6	131.2	117.5	132.3	142.0
<b>C29</b>	149.8	118.3	174.7	135.3	123.6	160.6	169.9	162.1	158.2	156.5	130.4	150.0	139.5	160.2	157.8
<b>C30</b>	181.5	98.0	90.3	86.0	147.3	78.3	49.7	54.1	93.8	56.2	65.6	91.9	76.8	179.9	67.5
<b>C31</b>	156.0	91.5	101.3	98.0	97.8	119.0	114.1	120.9	112.8	91.9	95.1	108.8	103.9	114.9	117.9
<b>C32</b>	152.3	177.3	141.3	115.0	122.7	150.7	164.2	183.3	143.0	133.9	124.2	137.8	126.7	164.8	176.3
<b>C33</b>	139.8	81.9	121.9	119.6	131.6	103.3	124.7	111.0	170.5	80.6	93.7	101.7	100.1	86.5	94.3
<b>D</b>	<b>107.6</b>	<b>103.1</b>	<b>100.0</b>	<b>104.4</b>	<b>103.8</b>	<b>99.1</b>	<b>111.4</b>	<b>112.8</b>	<b>134.6</b>	<b>125.6</b>	<b>128.5</b>	<b>129.2</b>	<b>115.6</b>	<b>97.5</b>	<b>97.2</b>
<b>D35</b>	107.6	103.1	100.0	104.4	103.8	99.1	111.4	112.8	134.6	125.6	128.5	129.2	115.6	97.5	97.2