

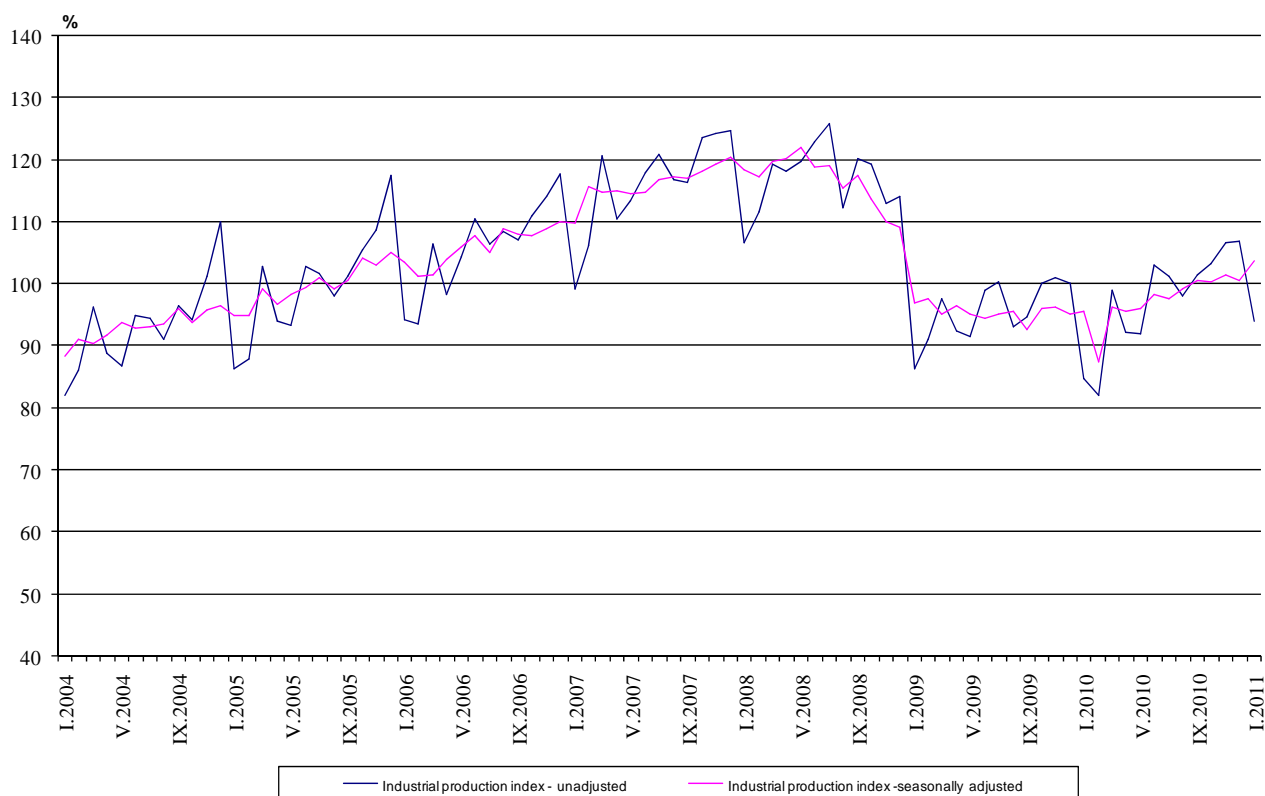


Industrial Production Indices in January 2011¹

The preliminary data showed that the Industrial Production Index², seasonally adjusted³, increased by 3.2% in January 2011 as compared to December 2010.

In January 2011 working day adjusted⁴ Industrial Production Index rose by 9.3% as compared to the same month of 2010.

Figure 1. Industrial Production Indices (2005 = 100)



¹January 2011 data are preliminary.

² Monthly Industrial Production and Industrial turnover indices measure changes in **production and turnover values** of industrial enterprises. This information can be used to assess the current economic development and for short-term forecasts. Indices do not measure the actual production level, it aims to measure the average change in value of production between two points of time

Indices are compiled on the base of information collected through representative sampling survey on industrial enterprises. The sample covers enterprises with annual turnover more than 97% of total turnover in industry.

Industrial production indices are calculated at constant base year (2005) that is to say they are weighted with the structure of the value added at factor costs in the base year.

³ **Seasonal adjustment** is a statistical method, which eliminates the seasonal component of time series and it is particularly suitable for long-term comparisons and analysis of the data.

⁴ **Working day adjustment** is an adjustment for variations caused by calendar effects, different number of calendar and working days in the months, national holidays and outliers (for example the presence of more non-working days in May could contribute to the decline in the production in some activities).

The seasonally and working day adjusted data on Industrial production index for the period 2000-2010 can be found in NSI internet web-site: (<http://www.nsi.bg/otrasalen.php?otr=46>).

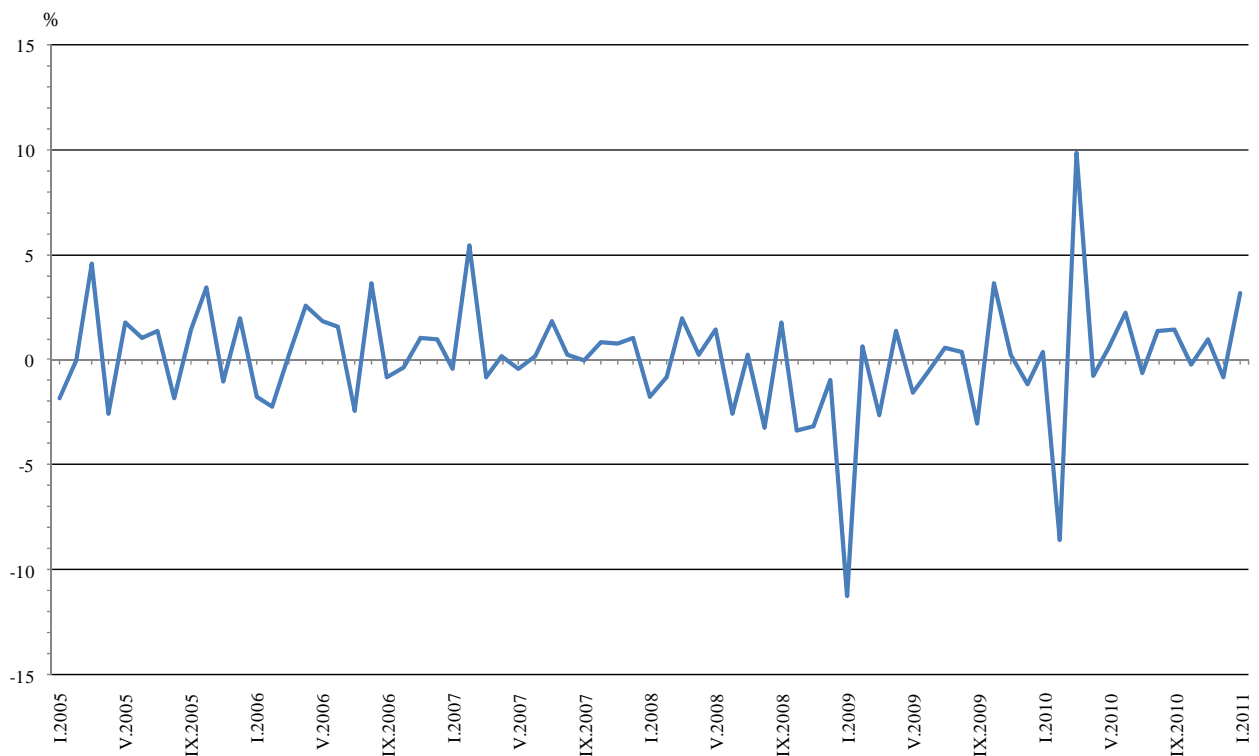


Monthly comparisons

In January 2011 as compared to December 2010, the seasonally adjusted Industrial Production Index in manufacturing increased by 18.7%, while in the mining and quarrying industry and in the electricity, gas, steam and air conditioning supply decreases by 1.5% were registered.

The most significant increases of production in the manufacturing were seen in the manufacture of fabricated metal products, except machinery and equipment by 36.6%, in the manufacture of chemicals and chemical products by 23.4%, in the manufacture of basic pharmaceutical products and pharmaceutical preparations by 16.4%, in the manufacture of textiles by 13.3%, in the manufacture of basic metals by 13.1%. There was decrease in the repair and installation of machinery and equipment by 5.1%.

Figure 2. Percentage changes of Industrial Production Indices compared to the previous month
(Seasonally adjusted)



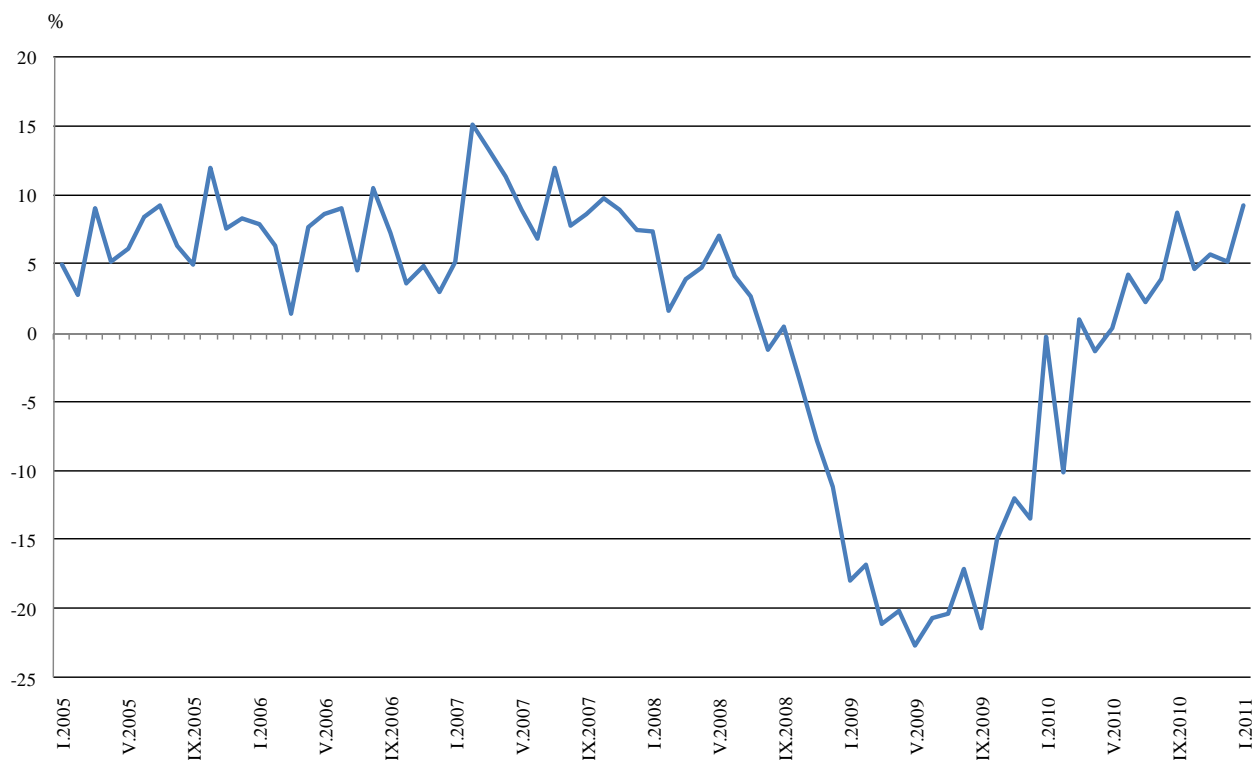


Annual comparisons

On annual bases in January 2011 Industrial Production Index, calculated from working day adjusted data in the manufacturing grew by 14.9%, in the mining and quarrying industry by 13.7%, while in the electricity, gas, steam and air conditioning supply a drop by 2.7% was seen.

Increases were registered in the production of investment goods by 27.6%, in the production of intermediate goods by 21.3%, while in the production of energy a decrease by 1.0% was seen.

Figure 3. Percentage changes of Industrial Production Indices compared to the same month of the previous year
(Working day adjusted)



The final data on Industrial Production and Turnover Indices for December 2010 can be found in NSI internet web-site: (<http://www.nsi.bg/otrasalen.php?otr=46>).

Percentage changes of Industrial Production Indices compared to the previous month¹

Economic Activities	NACE.BG - 2008 Code	2010					2011
		VIII	IX	X	XI	XII	I
Industry	B_TO_E36	1.4	1.5	-0.2	1.0	-0.8	3.2
Mining and quarrying	B	-2.8	9.9	3.8	5.7	-9.6	-1.5
of which:							
Mining of coal and lignite	B05	6.1	-0.1	5.2	-1.7	-5.9	4.0
Mining of metal ores	B07	-2.9	4.0	-17.7	22.5	-10.6	21.4
Other mining and quarrying	B08	-3.3	11.6	-6.1	1.8	-2.1	-2.8
Manufacturing	C	1.5	2.4	0.1	2.4	-12.0	18.7
of which:							
Manufacture of food products	C10	0.3	4.1	-5.6	4.9	-5.5	10.8
Manufacture of beverages	C11	2.0	0.9	-10.4	10.0	-7.7	5.9
Manufacture of tobacco products	C12	-7.2	-6.6	2.5	4.5	6.1	12.7
Manufacture of textiles	C13	-5.0	5.0	-2.4	-2.7	-4.2	13.3
Manufacture of wearing apparel	C14	-2.9	5.3	-0.3	-1.0	-2.5	1.3
Manufacture of leather and related products	C15	1.8	0.8	-1.4	-0.5	0.0	-0.8
Manufacture of wood and of products of wood and cork, except furniture; manufacture of articles of straw and plaiting materials	C16	-1.6	2.0	5.3	-9.1	-1.4	7.8
Manufacture of paper and paper products	C17	13.9	-4.4	-22.8	24.4	-2.4	14.5
Printing and reproduction of recorded media	C18	1.2	14.4	-6.0	-1.1	-4.5	4.9
Manufacture of chemicals and chemical products	C20	6.8	1.8	-1.0	14.3	-19.9	23.4
Manufacture of basic pharmaceutical products and pharmaceutical preparations	C21	-0.8	8.2	-0.6	-8.3	1.5	16.4
Manufacture of rubber and plastic products	C22	-2.9	7.9	-7.3	6.2	-4.0	3.6
Manufacture of other non-metallic mineral products	C23	0.9	2.7	-4.5	8.5	-11.8	4.6
Manufacture of basic metals	C24	-2.6	3.3	1.5	-8.4	0.3	13.1
Manufacture of fabricated metal products, except machinery and equipment	C25	1.4	4.8	4.4	3.5	-20.2	36.6
Manufacture of computer, electronic and optical products	C26	1.5	-6.2	10.9	-0.3	2.9	12.1
Manufacture of electrical equipment	C27	-1.5	6.0	-1.6	-3.6	0.5	2.4
Manufacture of machinery and equipment n.e.c.	C28	5.6	-0.4	2.5	-2.2	-4.2	5.8
Manufacture of motor vehicles, trailers and semi-trailers	C29	1.1	4.6	0.0	0.8	1.1	-0.8
Manufacture of other transport equipment	C30	45.8	-37.6	-20.9	8.9	17.3	45.2
Manufacture of furniture	C31	3.7	13.0	-5.5	3.5	-10.0	10.7
Other manufacturing	C32	6.3	8.7	3.6	18.5	-11.6	15.0
Repair and installation of machinery and equipment	C32	17.0	-23.9	20.4	-13.0	19.8	-5.1
Electricity, gas, steam and air conditioning supply	D	-0.8	-4.8	5.7	-10.0	3.4	-1.5
Electricity, gas, steam and air conditioning supply	D35	-0.8	-4.8	5.7	-10.0	3.4	-1.5

¹ Seasonally adjusted.

Percentage changes of Industrial Production Indices compared to the same month of the previous year¹

Economic Activities	NACE.BG - 2008 Code	2010					2011
		VIII	IX	X	XI	XII	I
Industry	B_TO_E36	3.9	8.7	4.7	5.7	5.2	9.3
Mining and quarrying	B	2.2	16.5	-9.5	-1.3	1.3	13.7
of which:							
Mining of coal and lignite	B05	42.4	20.8	6.5	6.2	11.4	12.4
Mining of metal ores	B07	-14.0	20.6	-24.1	-6.6	-6.1	12.7
Other mining and quarrying	B08	-22.7	1.2	-8.0	-8.4	-9.7	-13.7
Manufacturing	C	5.3	12.8	6.9	11.5	7.6	14.9
of which:							
Manufacture of food products	C10	6.8	15.8	7.8	13.0	0.6	13.1
Manufacture of beverages	C11	-4.7	4.0	-19.0	-0.9	-1.2	3.0
Manufacture of tobacco products	C12	-19.2	-30.8	-15.6	-16.7	6.0	31.8
Manufacture of textiles	C13	-3.4	8.7	4.1	3.0	-1.8	21.4
Manufacture of wearing apparel	C14	-6.5	5.4	1.0	5.3	1.3	3.6
Manufacture of leather and related products	C15	17.9	12.4	0.2	2.3	6.4	-6.5
Manufacture of wood and of products of wood and cork, except furniture; manufacture of articles of straw and plaiting materials	C16	25.8	25.5	31.0	9.6	12.6	35.3
Manufacture of paper and paper products	C17	108.9	79.0	42.2	74.2	53.0	57.3
Printing and reproduction of recorded media	C18	2.9	18.2	-5.6	-5.3	-2.1	-7.8
Manufacture of chemicals and chemical products	C20	41.3	43.7	17.9	48.1	4.0	43.1
Manufacture of basic pharmaceutical products and pharmaceutical preparations	C21	6.6	26.8	17.2	2.3	-2.4	17.7
Manufacture of rubber and plastic products	C22	8.2	10.9	3.6	11.1	8.0	13.5
Manufacture of other non-metallic mineral products	C23	-2.5	5.0	0.8	11.5	4.3	14.8
Manufacture of basic metals	C24	1.0	9.0	-0.6	-14.4	-0.5	12.6
Manufacture of fabricated metal products, except machinery and equipment	C25	10.7	24.2	23.9	35.9	21.6	49.8
Manufacture of computer, electronic and optical products	C26	19.3	6.6	9.2	7.8	10.4	29.2
Manufacture of electrical equipment	C27	9.5	16.2	12.8	1.6	1.9	-4.8
Manufacture of machinery and equipment n.e.c.	C28	22.2	17.5	25.4	20.3	13.9	21.9
Manufacture of motor vehicles, trailers and semi-trailers	C29	24.8	36.1	23.4	26.8	30.3	13.2
Manufacture of other transport equipment	C30	-24.4	-26.4	-62.5	-41.6	-11.7	15.2
Manufacture of furniture	C31	6.5	31.6	25.1	28.6	13.6	22.3
Other manufacturing	C32	-22.7	-19.9	-15.6	24.9	36.6	29.7
Repair and installation of machinery and equipment	C33	30.4	19.1	23.5	7.9	45.2	14.4
Electricity, gas, steam and air conditioning supply	D	1.0	-4.6	4.2	-7.2	0.9	-2.7
Electricity, gas, steam and air conditioning supply	D35	1.0	-4.6	4.2	-7.2	0.9	-2.7

¹ Working day adjusted.



Table 3

Industrial Production Indices
(seasonally adjusted, 2005=100)

NACE.BG - 2008 Code	2010												2011
	I	II	III	IV	V	VI	VII	VIII	IX	X	XI	XI	I
B_TO_E36	95.6	87.5	96.2	95.5	96.1	98.3	97.7	99.1	100.6	100.4	101.4	100.6	103.8
B	68.7	69.6	74.8	67.4	71.1	78.0	74.9	72.8	80	83.0	87.7	79.3	78.1
B05	90.2	95.3	92.5	81.3	98.0	102.6	96.4	102.3	102.2	107.5	105.7	99.5	103.5
B07	76.7	74.4	76.6	84.0	71.2	76.5	77.0	74.8	77.8	64.0	78.4	70.1	85.1
B08	73.4	69.1	70.9	58.7	67.5	67.4	64.3	62.2	69.4	65.2	66.4	65.0	63.2
C	94.4	82.2	93.2	95.7	97.6	98.3	97.4	98.9	101.3	101.4	103.8	91.3	108.4
C10	112.2	111.6	111.5	108.5	121.6	120.9	117.3	117.7	122.5	115.6	121.3	114.6	127
C11	85.6	80.8	91.4	87.7	88.0	87.2	88.5	90.3	91.1	81.6	89.8	82.9	87.8
C12	98.1	90.3	111.2	89.3	95.5	104.1	102.8	95.4	89.1	91.3	95.4	101.2	114.1
C13	59.2	57.7	63.4	70.3	68.8	69.0	69.8	66.3	69.6	67.9	66.1	63.3	71.7
C14	67.7	65.7	66.3	67.3	68.3	66.4	70.1	68.1	71.7	71.5	70.8	69.0	69.9
C15	77.3	77.8	76.8	76.2	74.0	77.4	77.2	78.6	79.2	78.1	77.7	77.7	77.1
C16	70.5	72.3	79.2	81.9	79.3	82.5	88.0	86.6	88.3	93.0	84.5	83.3	89.8
C17	98.0	105.2	111.5	110.8	121.0	146.9	128.6	146.5	140.1	108.2	134.6	131.4	150.5
C18	121.5	107.8	114.8	117.0	116.9	100.2	103.8	105.0	120.1	112.9	111.7	106.7	111.9
C20	82.2	83.3	89.1	88.6	93.9	88.4	96.2	102.7	104.5	103.5	118.3	94.7	116.9
C21	87.0	84.8	79.3	86.4	88.5	89.0	86.1	85.4	92.4	91.8	84.2	85.5	99.5
C22	104.3	93.7	104.3	105.5	113.2	111.5	115.4	112.1	120.9	112.1	119.0	114.2	118.3
C23	68.7	70.9	77.1	75.5	85.3	90.2	79.7	80.4	82.6	78.9	85.6	75.5	79.0
C24	94.9	100.4	97.8	100.9	100.1	93.6	99.0	96.4	99.6	101.1	92.6	92.9	105.1
C25	80.3	100.4	97.6	89.4	93.6	101.3	96.1	97.4	102.1	106.6	110.3	88.0	120.2
C26	102.4	106.4	97.4	107.4	94.6	101.3	109.1	110.7	103.8	115.1	114.8	118.1	132.4
C27	154.3	134.7	145.3	138.4	143.3	143.6	142.2	140.1	148.5	146.1	140.9	141.6	145
C28	93.9	97.2	102.2	103.7	106.1	110.0	107.4	113.4	112.9	115.7	113.1	108.3	114.6
C29	142.1	146.2	152.0	154.4	153.2	160.1	152.8	154.5	161.6	161.6	162.9	164.7	163.4
C30	92.4	88.0	96.9	89.5	114.5	86.9	76.9	112.1	69.9	55.3	60.2	70.6	102.5
C31	89.3	89.6	94.0	92.9	93.4	96.0	95.5	99.0	111.9	105.7	109.4	98.5	109.0
C32	129.9	131.0	144.9	139.0	135.5	126.3	116.7	124.1	134.9	139.7	165.5	146.3	168.2
C33	103.5	110.0	118.7	116.5	93.8	114.0	111.7	130.7	99.4	119.7	104.1	124.7	118.4
D	109.2	109.1	107.7	107.1	104.9	114.1	115.6	114.7	109.2	115.4	103.9	107.4	105.8
D35	109.2	109.1	107.7	107.1	104.9	114.1	115.6	114.7	109.2	115.4	103.9	107.4	105.8



Table 4

Industrial Production Indices
(working day adjusted, 2005=100)

NACE.BG - 2008 Code	2008	2009	2010												2011
	I	II	I	II	III	IV	V	VI	VII	VIII	IX	X	XI	XII	I
B_TO_E36	106.8	87.7	87.4	82.3	99.2	92.8	96.1	102.3	101.5	98.3	103.5	105.0	107.4	107.1	95.5
B	88.1	69.6	69.1	70.0	75.3	67.9	71.6	78.5	75.4	73.3	80.5	83.6	88.2	79.8	78.6
B05	125.5	115.9	104.3	100.8	90.1	56.5	80.2	92.2	96.0	94.3	106.7	129.3	125.4	110.2	117.2
B07	71.9	47.8	65.1	66.9	78.8	91.0	81.3	82.4	76.0	73.1	77.9	69.0	80.9	73.5	73.4
B08	68.1	53.9	47.5	54.3	69.5	57.7	73.1	72.6	65.8	64.6	77.0	72.8	74.3	71.9	41.0
C	102.6	78.4	78.0	72.8	96.6	94.4	101.9	105.5	103.6	99.3	107.2	105.9	108.6	103.3	89.6
C10	105.5	100.0	95.2	95.7	111.3	105.1	126.9	124.5	118.3	121.7	136.3	126.5	130.7	126.9	107.7
C11	79.8	71.9	54.1	51.5	85.5	85.7	98.7	105.7	107.6	114.8	98.3	73.8	88.3	102.3	55.7
C12	31.6	54.6	60.7	48.0	96.4	72.4	106.6	116.0	119.6	115.6	112.4	117.4	113.0	104.6	80.0
C13	108.0	59.9	49.0	56.5	73.5	76.2	81.2	78.2	78.8	50.9	70.0	70.3	71.7	58.8	59.5
C14	104.1	84.2	67.1	64.5	68.6	61.5	67.0	68.7	79.9	66.3	72.6	73.8	74.1	75.8	69.5
C15	122.5	85.0	80.2	86.4	77.0	68.5	62.3	80.7	91.4	76.9	89.0	84.8	76.0	71.7	75.0
C16	74.7	52.3	54.4	61.1	79.9	80.6	82.3	88.4	93.2	88.3	96.5	100.6	93.3	82.4	73.6
C17	101.8	79.0	91.5	97.6	112.7	111.5	123.2	151.8	132.0	147.3	145.0	111.5	137.6	133.4	143.9
C18	93.6	106.6	100.9	93.5	109.6	113.8	120.2	105.3	103.8	110.7	134.3	123.0	121.8	128.0	93.0
C20	101.8	78.9	74.9	75.4	97.8	92.3	92.2	93.3	98.1	96.4	107.2	99.9	125.0	93.6	107.2
C21	84.2	64.3	80.1	84.4	86.5	83.4	94.1	98.5	73.4	84.2	97.6	101.0	91.7	91.2	94.3
C22	111.5	84.8	84.3	80.1	107.4	105.4	113.7	120.7	127.1	114.0	129.7	125.7	129.3	114.3	95.7
C23	101.3	68.0	45.2	53.1	73.2	77.4	94.7	99.4	88.9	86.5	94.2	90.5	94.2	72.9	51.9
C24	100.6	80.4	83.4	99.0	108.0	102.2	99.3	93.8	105.4	93.5	95.2	107.5	94.4	77.8	93.9
C25	132.2	68.0	57.4	89.9	100.4	90.4	94.6	109.4	99.3	98.4	106.9	103.7	116.9	112.4	86.0
C26	87.8	65.8	86.6	88.7	100.6	104.7	97.4	104.0	105.5	98.9	113.8	115.1	119.3	156.6	111.9
C27	139.0	109.8	140.7	122.7	146.1	134.3	146.9	146.2	148.6	125.7	173.6	170.7	160.3	146.8	133.9
C28	123.7	106.3	81.0	89.4	106.8	103.7	107.6	119.4	114.5	106.1	120.2	124.1	122.2	116.9	98.7
C29	133.1	69.9	135.7	145.9	170.9	163.5	162.1	174.7	135.3	123.6	160.6	169.9	162.1	158.2	153.6
C30	67.1	49.3	44.6	58.9	89.4	70.1	143.3	90.3	86.0	147.3	78.3	49.7	54.1	93.8	51.4
C31	123.9	82.7	75.7	79.9	98.7	92.4	99.3	101.3	98.0	97.8	119.0	114.1	120.9	112.8	92.6
C32	113.8	110.1	102.9	114.0	145.1	138.3	145.6	141.3	115.0	122.7	150.7	164.2	183.3	143.0	133.5
C33	92.0	68.8	70.9	90.2	120.8	106.9	90.3	121.9	119.6	131.6	103.3	124.7	111.0	170.5	81.1
D	131.8	127.4	128.7	121.3	120.1	97.7	86.6	100.0	104.4	103.8	99.1	111.4	112.8	134.6	125.2
D35	131.8	127.4	128.7	121.3	120.1	97.7	86.6	100.0	104.4	103.8	99.1	111.4	112.8	134.6	125.2