

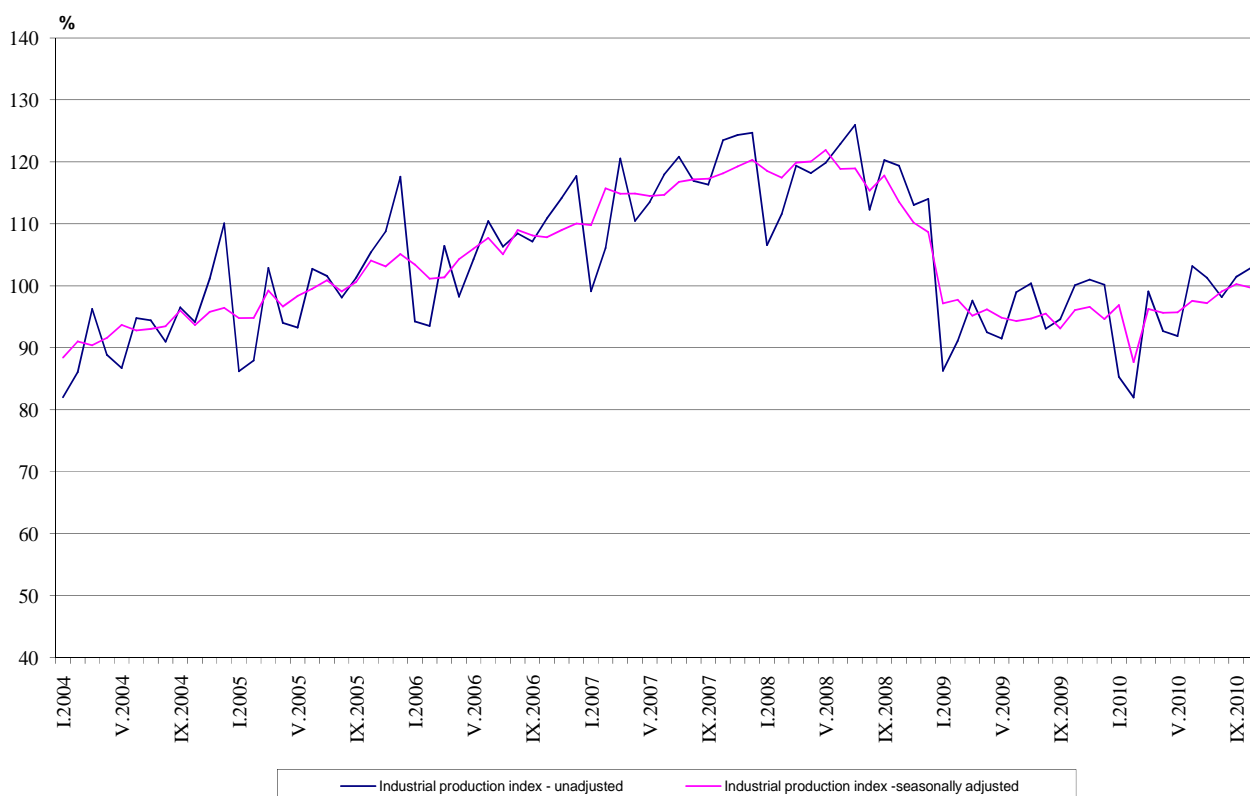


Industrial Production Indices in October 2010¹

The preliminary data showed that the Industrial Production Index², seasonally adjusted³ decreased by 0.6% in October 2010 as compared to September 2010.

In October 2010 working day adjusted⁴ Industrial Production Index rose by 4.3% as compared to the same month of 2009.

Figure 1. Industrial Production Indices (2005=100)



¹ October 2010 data are preliminary.

² Monthly Industrial Production and Industrial turnover indices measure changes in **production and turnover values** of industrial enterprises. This information can be used to assess the current economic development and for short-term forecasts. Indices do not measure the actual production level, it aims to measure the average change in value of production between two points of time

Indices are compiled on the base of information collected through representative sampling survey on industrial enterprises. The sample covers enterprises with annual turnover more than 97% of total turnover in industry.

Industrial production indices are calculated at constant base year (2005) that is to say they are weighted with the structure of the value added at factor costs in the base year.

³ **Seasonal adjustment** is a statistical method, which eliminates the seasonal component of time series and it is particularly suitable for long-term comparisons and analysis of the data.

⁴ **Working day adjustment** is an adjustment for variations caused by calendar effects, different number of calendar and working days in the months, national holidays and outliers (for example the presence of more non-working days in May could contribute to the decline in the production in some activities).

The seasonally and working day adjusted data on Industrial production index for the period 2000-2010 can be found in NSI internet web-site: (<http://www.nsi.bg/otrasalen.php?otr=46>).

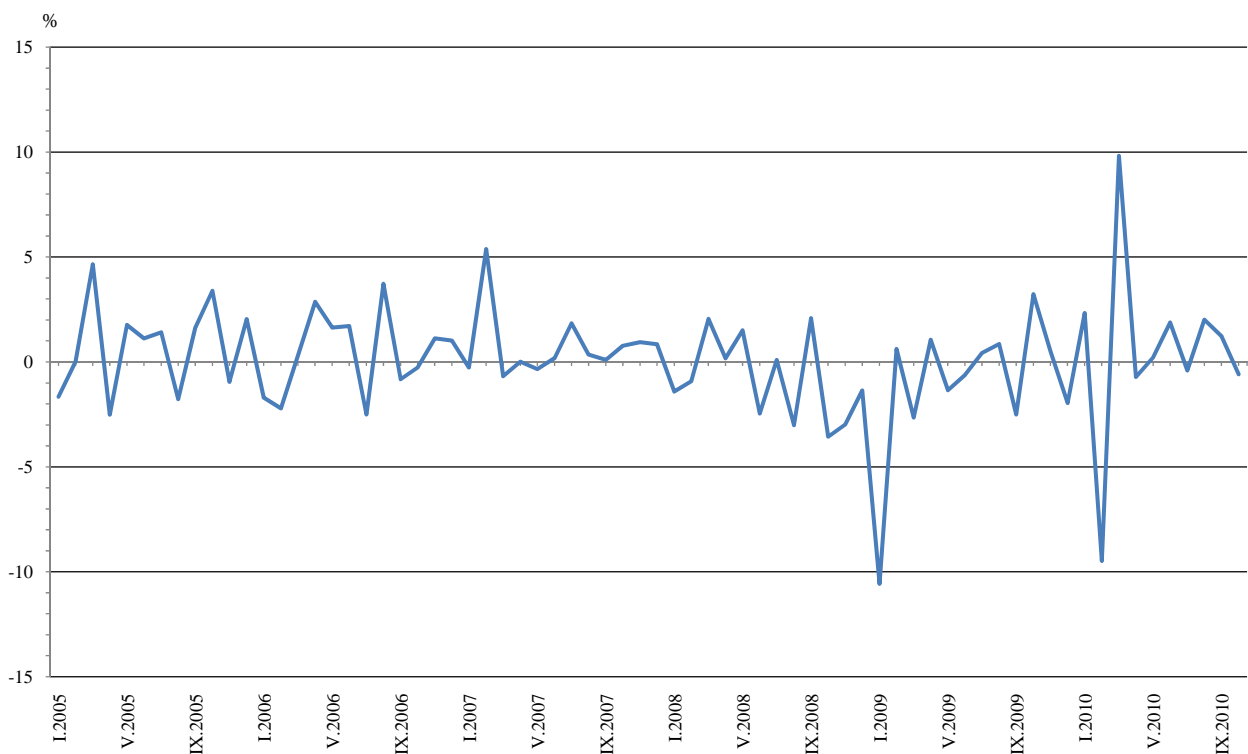


Monthly comparisons

In October 2010 as compared to September 2010, the seasonally adjusted Industrial Production Index in the mining and quarrying industry decreased by 5.7%, in manufacturing by 1.1%, while in the electricity, gas, steam and air conditioning supply the increase by 5.5% was registered.

The most significant decreases of production in the manufacturing were seen in the manufacture of paper and paper products by 21.3%, in the manufacture of beverages by 11.2%, in the manufacture of rubber and plastic products by 7.9%, in the manufacture of food products by 5.4%, in the printing and reproduction of recorded media by 4.7%. There were increases in the repair and installation of machinery and equipment by 19.5%, in the manufacture of wood and of products of wood and cork, except furniture; manufacture of articles of straw and plaiting materials by 5.1%, in the manufacture of tobacco products by 4.8%.

Figure 2. Percentage changes of Industrial Production Indices compared to the previous month (seasonally adjusted)



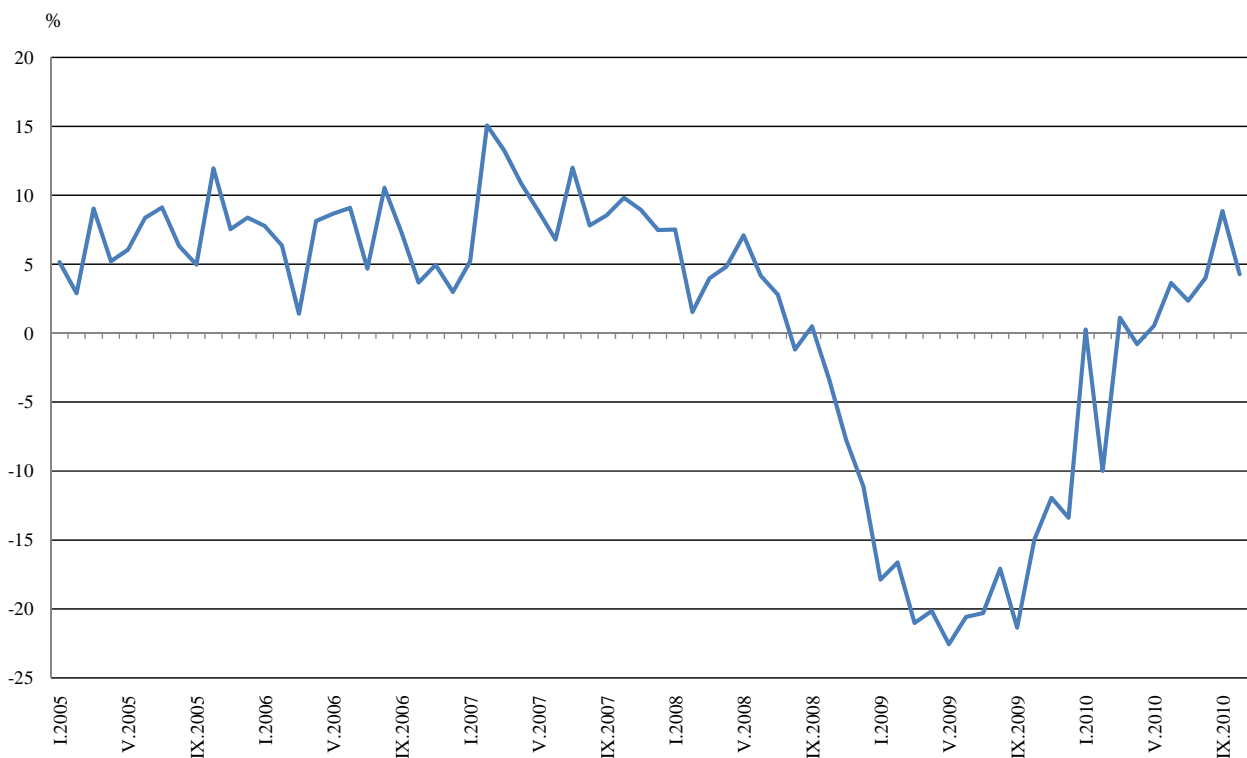


Annual comparisons

On annual bases in October 2010 Industrial Production Index, calculated from working day adjusted data, grew in the manufacturing by 6.5%, in the electricity, gas, steam and air conditioning supply by 3.9%, while in the mining and quarrying industry a drop by 12.3% was seen .

Increases were registered in the production of investment goods by 8.8%, in the production of intermediate goods by 6.3% and in the production of energy by 3.3%.

Figure 3. Percentage changes of Industrial Production Indices compared to the same month of the previous year
(working day adjusted)



The final data on Industrial Production and Turnover Indices for September 2010 can be found in NSI internet web-site: (<http://www.nsi.bg/otrasalen.php?otr=46>).



Table 1

Percentage changes of Industrial Production Indices compared to the previous month*

Economic Activities	NACE.BG - 2008 Code	2010					
		V	VI	VII	VIII	IX	X
Industry	B_TO_E36	0.2	1.9	-0.4	2.0	1.2	-0.6
Mining and quarrying	B	6.7	7.7	-5.6	-1.4	2.9	-5.7
of which:							
Mining of coal and lignite	B05	20.2	4.2	-5.2	6.1	0.3	5.1
Mining of metal ores	B07	-14.9	7.1	0.5	-2.6	3.1	-25.3
Other mining and quarrying	B08	14.2	0.0	-5.1	-2.1	11.3	-7.5
Manufacturing	C	1.4	1.5	-1.0	2.6	2.6	-1.1
of which:							
Manufacture of food products	C10	12.3	-0.7	-3.3	0.8	3.8	-5.4
Manufacture of beverages	C11	-0.1	0.0	2.1	2.7	-1.0	-11.2
Manufacture of tobacco products	C12	-1.5	11.9	-2.4	-7.4	-8.7	4.8
Manufacture of textiles	C13	0.4	-0.3	1.3	-5.7	5.9	-2.9
Manufacture of wearing apparel	C14	1.1	-3.3	7.4	-3.3	7.0	0.4
Manufacture of leather and related products	C15	-3.2	4.4	1.3	3.4	1.1	-1.3
Manufacture of wood and of products of wood and cork, except furniture; manufacture of articles of straw and plaiting materials	C16	-2.9	3.8	7.2	-1.6	2.2	5.1
Manufacture of paper and paper products	C17	8.1	30.8	-8.7	8.3	-4.8	-21.3
Printing and reproduction of recorded media	C18	-0.8	-13.4	3.0	1.9	13.7	-4.7
Manufacture of chemicals and chemical products	C20	7.2	-4.1	9.4	6.5	1.5	-1.6
Manufacture of basic pharmaceutical products and pharmaceutical preparations	C21	1.3	1.4	-3.0	2.4	3.4	-0.5
Manufacture of rubber and plastic products	C22	6.8	-0.4	2.9	-2.9	8.2	-7.9
Manufacture of other non-metallic mineral products	C23	10.8	3.6	-8.5	1.1	2.0	-3.9
Manufacture of basic metals	C24	-1.1	-6.9	6.3	-2.8	4.0	2.2
Manufacture of fabricated metal products, except machinery and equipment	C25	7.1	5.0	-4.6	1.6	5.5	3.2
Manufacture of computer, electronic and optical products	C26	-11.9	7.1	7.9	1.1	-6.2	10.8
Manufacture of electrical equipment	C27	5.0	-2.4	-0.1	-0.1	6.3	-1.3
Manufacture of machinery and equipment n.e.c.	C28	2.5	2.9	-1.8	6.1	-0.2	2.4
Manufacture of motor vehicles, trailers and semi-trailers	C29	1.6	-1.6	-7.5	4.4	5.3	0.2
Manufacture of other transport equipment	C30	31.8	-25.3	-9.2	48.8	-41.7	-22.7
Manufacture of furniture	C31	0.1	2.7	-0.7	5.0	13.0	-5.4
Other manufacturing	C32	-2.7	-6.8	-8.3	7.2	8.0	2.2
Repair and installation of machinery and equipment	C32	-19.1	21.2	-1.8	15.7	-23.2	19.5
Electricity, gas, steam and air conditioning supply	D	-3.7	8.9	1.5	-1.0	-4.6	5.5
Electricity, gas, steam and air conditioning supply	D35	-3.7	8.9	1.5	-1.0	-4.6	5.5

- - seasonally adjusted

Percentage changes of Industrial Production Indices compared to the same month of the previous year *

Economic Activities	NACE.BG - 2008 Code	2010					
		V	VI	VII	VIII	IX	X
Industry	B_TO_E36	0.5	4.2	2.4	4.0	8.8	4.3
Mining and quarrying	B	-2.8	14.3	1.7	1.2	17.8	-12.3
of which:							
Mining of coal and lignite	B05	4.4	34.8	14.1	42.0	20.8	6.6
Mining of metal ores	B07	-1.2	14.8	-1.0	-14.0	21.1	-31.2
Other mining and quarrying	B08	-19.8	-18.4	-18.6	-22.7	1.2	-9.9
Manufacturing	C	2.6	5.9	4.4	5.6	12.8	6.5
of which:							
Manufacture of food products	C10	13.6	9.5	2.3	7.4	16.7	8.5
Manufacture of beverages	C11	-16.3	-9.5	-9.4	-4.5	3.8	-19.7
Manufacture of tobacco products	C12	-21.7	5.0	5.1	-19.2	-30.6	-15.2
Manufacture of textiles	C13	0.1	3.4	7.0	-3.9	9.4	4.5
Manufacture of wearing apparel	C14	-11.2	-13.1	-6.3	-6.5	5.2	0.6
Manufacture of leather and related products	C15	-21.0	0.7	-12.1	17.9	12.4	0.0
Manufacture of wood and of products of wood and cork, except furniture; manufacture of articles of straw and plaiting materials	C16	18.7	15.6	15.8	25.2	25.7	30.5
Manufacture of paper and paper products	C17	59.0	130.9	85.7	110.3	78.8	41.8
Printing and reproduction of recorded media	C18	5.2	-26.9	-12.5	3.5	17.7	-3.7
Manufacture of chemicals and chemical products	C20	41.9	13.5	24.9	39.4	41.5	16.2
Manufacture of basic pharmaceutical products and pharmaceutical preparations	C21	18.7	25.4	11.6	8.1	24.7	15.1
Manufacture of rubber and plastic products	C22	6.6	7.6	12.6	9.9	13.1	4.7
Manufacture of other non-metallic mineral products	C23	-7.0	-0.4	-5.8	-2.5	5.1	0.3
Manufacture of basic metals	C24	4.7	0.1	3.1	0.5	9.3	-0.2
Manufacture of fabricated metal products, except machinery and equipment	C25	17.6	24.3	14.0	9.7	25.6	22.7
Manufacture of computer, electronic and optical products	C26	-13.5	-10.0	6.8	19.2	6.5	9.1
Manufacture of electrical equipment	C27	17.8	15.7	11.3	9.4	16.3	13.2
Manufacture of machinery and equipment n.e.c.	C28	11.2	9.8	5.6	22.1	17.7	25.2
Manufacture of motor vehicles, trailers and semi-trailers	C29	48.1	47.6	12.9	24.8	36.2	23.3
Manufacture of other transport equipment	C30	1.2	-8.0	-33.7	-23.6	-25.9	-62.3
Manufacture of furniture	C31	-4.7	10.6	-1.1	6.2	31.7	25.1
Other manufacturing	C32	-10.9	-20.3	-30.7	-22.7	-19.9	-15.7
Repair and installation of machinery and equipment	C33	-6.1	49.0	21.4	30.6	19.1	22.7
Electricity, gas, steam and air conditioning supply	D	-4.6	-3.0	-3.1	0.9	-4.6	3.9
Electricity, gas, steam and air conditioning supply	D35	-4.6	-3.0	-3.1	0.9	-4.6	3.9

- - working day adjusted



Table 3

Industrial Production Indices
(seasonally adjusted, 2005=100)

NACE.BG - 2008 Code	2009			2010									
	X	XI	XII	I	II	III	IV	V	VI	VII	VIII	IX	X
B_TO_E36	96.1	96.6	94.7	96.9	87.7	96.3	95.6	95.8	97.6	97.2	99.1	100.3	99.7
B	82.8	81.3	73.5	73.1	74.8	75.5	70.3	75.0	80.8	76.3	75.2	77.4	73.0
B05	102.9	99.9	85.6	89.6	95	92.1	81.2	97.6	101.7	96.4	102.3	102.6	107.8
B07	84.5	84.1	73.7	77.3	74.4	76.8	84.3	71.7	76.8	77.2	75.2	77.5	57.9
B08	71.1	73.5	72.7	73.5	68.9	70.5	58.4	66.7	66.7	63.3	62.0	69.0	63.8
C	94.9	92.4	89.4	94.3	81.5	94.1	95.0	96.3	97.7	96.7	99.2	101.8	100.7
C10	107.1	107.4	113.2	113.3	112.1	112.1	109.2	122.6	121.7	117.7	118.6	123.1	116.5
C11	97.9	93.4	81.6	85.7	79.9	91.1	87.2	87.1	87.1	88.9	91.3	90.4	80.3
C12	104	112.8	97.2	107.4	99.6	116.8	96.3	94.9	106.2	103.6	95.9	87.6	91.8
C13	65.8	63.9	62.6	61.3	58.6	64	69.2	69.5	69.3	70.2	66.2	70.1	68.1
C14	73.8	69.2	68.1	68.1	64.7	65	66.1	66.8	64.6	69.4	67.1	71.8	72.1
C15	77.7	75.2	73.6	76.1	76.7	75.5	74.6	72.2	75.4	76.4	79.0	79.9	78.9
C16	70.3	75.3	72.6	70.7	72	78.9	81.8	79.4	82.4	88.3	86.9	88.8	93.3
C17	80.3	83.5	87.9	91	96.2	106	105.3	113.8	148.9	136.0	147.3	140.2	110.4
C18	119.4	117.6	110.3	119.5	107.5	114.7	117.0	116.1	100.6	103.6	105.6	120.1	114.5
C20	88.1	83.1	86	94	77.5	86.1	84.9	91.0	87.3	95.5	101.7	103.2	101.5
C21	81.3	82.2	84	83.8	84.2	84.1	84.2	85.3	86.5	83.9	85.9	88.8	88.4
C22	108	107.7	105.7	107.5	96.8	106.5	106.9	114.2	113.7	117.0	113.6	122.9	113.2
C23	79.3	78.4	71	72.1	72	77.4	76.7	85.0	88.1	80.6	81.5	83.1	79.9
C24	103.2	106.5	89.9	95.9	100.5	97.6	101.3	100.2	93.3	99.2	96.4	100.3	102.5
C25	86.6	81.6	70.5	81.9	100.3	97.4	89.2	95.5	100.3	95.7	97.2	102.5	105.8
C26	105.7	106.5	106.9	104.6	107.3	97.4	107.4	94.6	101.3	109.3	110.5	103.7	114.9
C27	130.9	136	136.4	155	135	145.8	138.0	144.9	141.4	141.3	141.1	150.0	148.1
C28	93.7	94.2	93.2	94.2	97	101.9	103.4	106.0	109.1	107.1	113.6	113.4	116.1
C29	124.8	129.5	135.2	144	149.4	157.3	160.5	163.1	160.5	148.4	155.0	163.2	163.6
C30	126.5	92.2	73.6	100.4	88.2	96.7	89.7	118.2	88.3	80.2	119.3	69.6	53.8
C31	85.4	86.3	85.2	91.2	91.8	93.5	92.5	92.6	95.1	94.4	99.1	112.0	105.9
C32	163.9	135.6	107.9	132.6	131.5	144.9	138.7	135.0	125.8	115.4	123.7	133.6	136.6
C33	97.7	94	87.3	102.7	110.1	118.1	116.6	94.3	114.3	112.2	129.8	99.7	119.1
D	112.2	111.6	105.4	108.4	108.5	107.5	109.4	105.3	114.7	116.4	115.2	109.9	115.9
D35	112.2	111.6	105.4	108.4	108.5	107.5	109.4	105.3	114.7	116.4	115.2	109.9	115.9



Table 4

Industrial Production Indices
(working day adjusted, 2005=100)

NACE.BG - 2008 Code	2007	2008	2009			2010									
	X	X	X	XI	XII	I	II	III	IV	V	VI	VII	VIII	IX	X
B_TO_E36	122.0	117.9	100.3	101.6	101.9	88.0	82.3	99.3	93.3	96.2	102.4	101.5	98.4	103.6	104.6
B	102.3	77.2	92.5	89.8	79.6	70.5	71.1	75.4	68.1	73.7	78.1	75.5	73.4	81.7	81.2
B05	126.1	103.1	121.4	118.1	99.1	104.6	100.8	90.1	56.5	80.7	92.2	96.0	94.3	106.7	129.4
B07	88.8	44.0	90.9	86.6	78.4	65.1	66.9	78.8	91.0	81.3	82.4	76.0	73.1	78.3	62.6
B08	116.1	146.4	79.1	81.1	79.5	47.4	54.3	69.5	57.7	73.0	72.6	65.8	64.6	77.0	71.3
C	125.9	123.1	99.0	97.3	95.7	78.2	72.6	96.6	94.3	101.2	105.8	103.5	99.2	107.0	105.5
C10	130.7	139.8	117.5	115.7	126.3	95.9	96.1	111.9	105.9	128.3	125.3	118.8	122.5	137.4	127.4
C11	109.3	110.3	91.0	89.0	103.1	53.7	51.3	85.6	85.6	97.7	105.9	107.6	114.6	97.9	73.1
C12	108.9	154.1	139.1	135.6	98.7	60.6	47.9	96.4	72.4	106.5	116.0	119.6	115.6	112.7	117.9
C13	126.1	93.0	67.6	69.8	60.4	49.7	56.7	73.6	76.4	82.7	77.9	78.8	51.0	70.6	70.6
C14	101.2	92.5	73.1	70.4	74.9	67.1	64.6	68.6	61.4	67.0	68.7	79.9	66.3	72.5	73.5
C15	153.3	123.1	84.6	74.3	67.5	80.3	86.4	77.0	68.5	62.4	80.7	91.4	76.9	89.0	84.6
C16	126.2	121.1	76.8	85.2	73.6	55.0	61.0	79.9	80.7	83.2	88.3	93.2	88.3	96.8	100.3
C17	112.7	106.9	78.3	78.8	86.7	90.5	97.4	112.6	111.3	121.7	152.0	131.9	147.3	144.5	111.1
C18	111.8	141.7	130.2	128.3	129.9	99.7	93.5	109.5	113.5	118.2	105.6	103.7	110.6	133.3	125.4
C20	105.3	114.3	84.7	84.4	90.0	89.6	70.7	97.7	89.7	91.3	92.2	97.1	95.1	105.6	98.4
C21	107.2	110.9	86.0	89.1	92.0	77.9	85.1	86.3	82.9	90.4	99.2	73.3	84.1	95.5	99.0
C22	135.1	147.4	121.3	116.4	105.7	86.7	82.7	109.9	106.9	115.3	123.2	129.1	115.7	132.4	127.0
C23	160.0	166.8	89.8	84.5	70.0	45.2	53.3	73.2	77.4	94.8	99.4	88.9	86.5	94.3	90.1
C24	114.0	105.9	108.2	110.4	78.6	83.9	99.0	107.6	102.4	99.7	93.6	105.3	93.4	95.5	108.0
C25	126.1	122.8	83.8	86.2	93.0	58.1	89.5	100.6	90.5	98.0	108.6	99.1	98.2	108.4	102.8
C26	98.3	91.1	105.5	110.7	142.0	88.1	89.5	100.6	104.7	97.6	104.0	105.6	98.9	113.8	115.1
C27	167.5	182.8	151.4	157.8	144.2	141.0	123.1	146.9	133.0	149.5	146.1	148.3	125.7	173.8	171.3
C28	143.2	142.6	99.0	101.7	102.8	81.3	89.4	106.8	103.8	108.2	119.2	114.5	106.1	120.5	123.9
C29	135.0	131.6	137.7	127.8	121.4	135.7	145.8	170.9	163.5	162.2	174.6	135.4	123.6	160.7	169.8
C30	108.1	136.9	132.2	92.3	105.1	43.7	58.9	89.3	69.9	139.2	90.6	85.9	147.3	78.5	49.9
C31	176.9	165.0	91.3	94.0	99.5	77.2	82.5	98.6	92.4	99.8	101.1	97.9	97.7	119.2	114.2
C32	215.3	151.2	194.5	146.8	104.7	102.9	114.1	145.1	138.3	145.5	141.2	115.0	122.7	150.7	164.0
C33	114.4	120.9	101.0	102.9	117.4	70.2	90.5	120.2	107.0	90.2	122.0	119.7	131.7	103.3	123.9
D	117.4	117.4	106.9	121.6	133.5	128.9	121.3	120.1	100.3	86.9	99.9	104.4	103.8	99.2	111.1
D35	117.4	117.4	106.9	121.6	133.5	128.9	121.3	120.1	100.3	86.9	99.9	104.4	103.8	99.2	111.1