

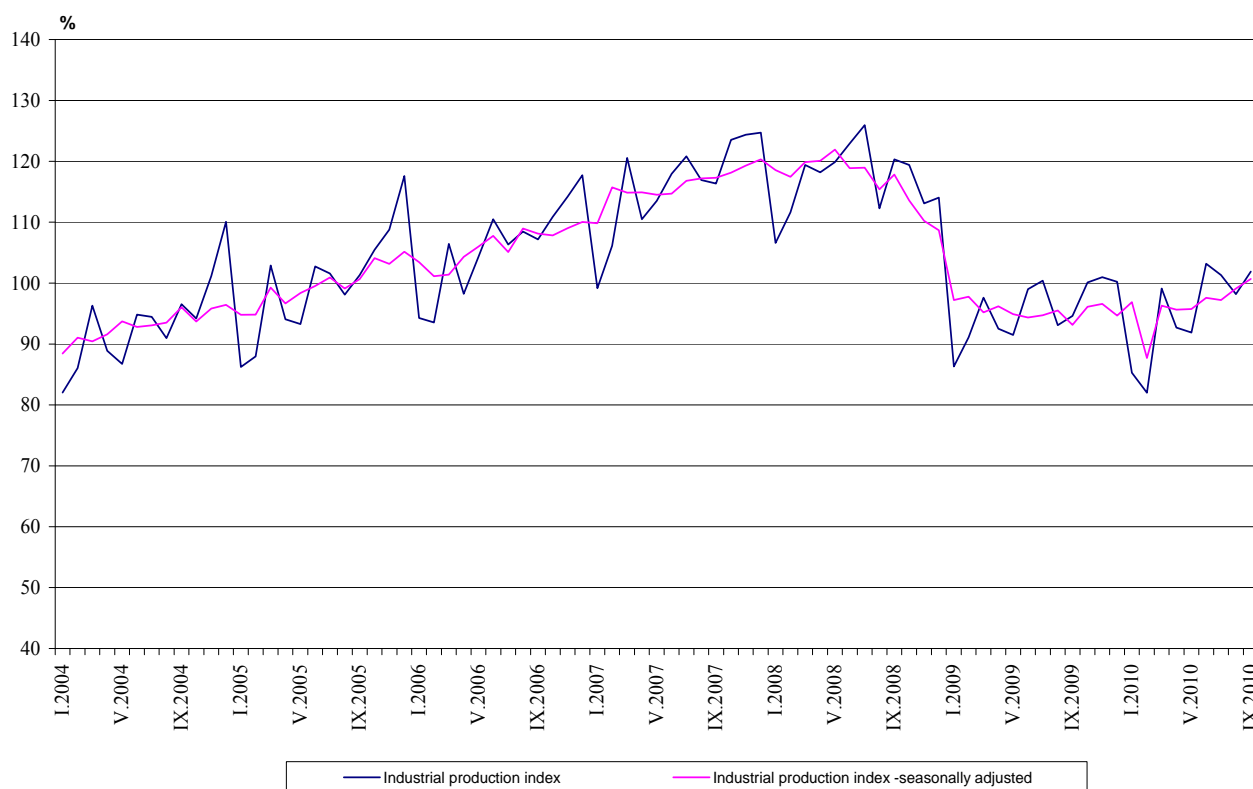


## Industrial Production Indices in September 2010<sup>1</sup>

The preliminary data showed that the Industrial Production Index<sup>2</sup>, seasonally adjusted<sup>3</sup> increased by 1.6% in September 2010 as compared to August 2010.

In September 2010 working day adjusted<sup>4</sup> Industrial Production Index rose by 9.3% as compared to the same month of 2009.

**Figure 1. Industrial Production Indices (2005 = 100)**



<sup>1</sup> September 2010 data are preliminary.

<sup>2</sup> Monthly Industrial Production and Industrial turnover indices measure changes in **production and turnover values** of industrial enterprises. This information can be used to assess the current economic development and for short-term forecasts. Indices do not measure the actual production level, it aims to measure the average change in value of production between two points of time

Indices are compiled on the base of information collected through representative sampling survey on industrial enterprises. The sample covers enterprises with annual turnover more than 97% of total turnover in industry.

Industrial production indices are calculated at constant base year (2005) that is to say they are weighted with the structure of the value added at factor costs in the base year.

<sup>3</sup> **Seasonal adjustment** is a statistical method, which eliminates the seasonal component of time series and it is particularly suitable for long-term comparisons and analysis of the data.

<sup>4</sup> **Working day adjustment** is an adjustment for variations caused by calendar effects, different number of calendar and working days in the months, national holidays and outliers (for example the presence of more non-working days in May could contribute to the decline in the production in some activities).

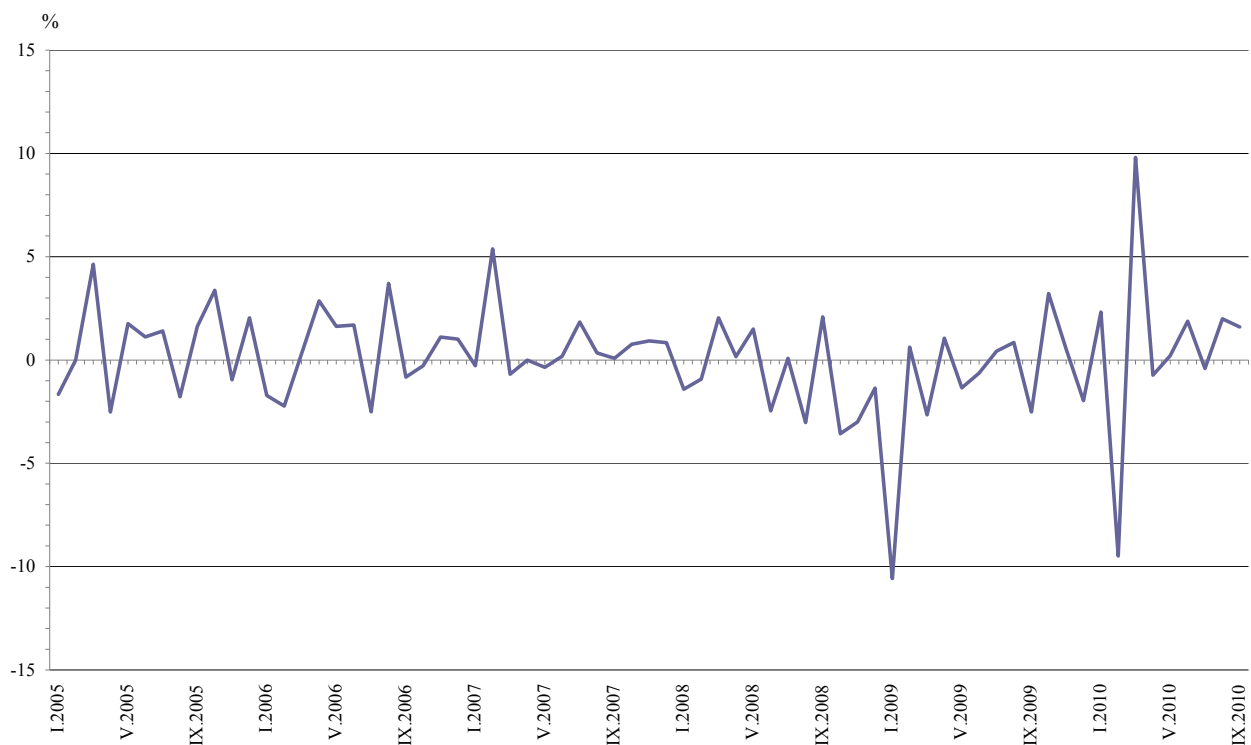
The seasonally and working day adjusted data on Industrial production index for the period 2000-2010 can be found in NSI internet web-site: (<http://www.nsi.bg/otrasalen.php?otr=46>).

### Monthly comparisons

In September 2010 as compared to August 2010, the seasonally adjusted Industrial Production Index in the mining and quarrying industry increased by 3.1%, in manufacturing by 2.8%, while in the electricity, gas, steam and air conditioning supply the decline by 4.1% was registered.

The most significant increases of production in the manufacturing were seen in the manufacture of furniture by 11.4%, in the printing and reproduction of recorded media by 9.2%, in the manufacture of tobacco products by 7.3%, in the manufacture of fabricated metal products, except machinery and equipment by 6.9%, in the manufacture of textiles by 6.5%. There were decreases in the repair and installation of machinery and equipment by 24.5%, in the manufacture of paper and paper products by 1.4%.

**Figure 2. Percentage changes of Industrial Production Indices compared to the previous month (Seasonally adjusted)**



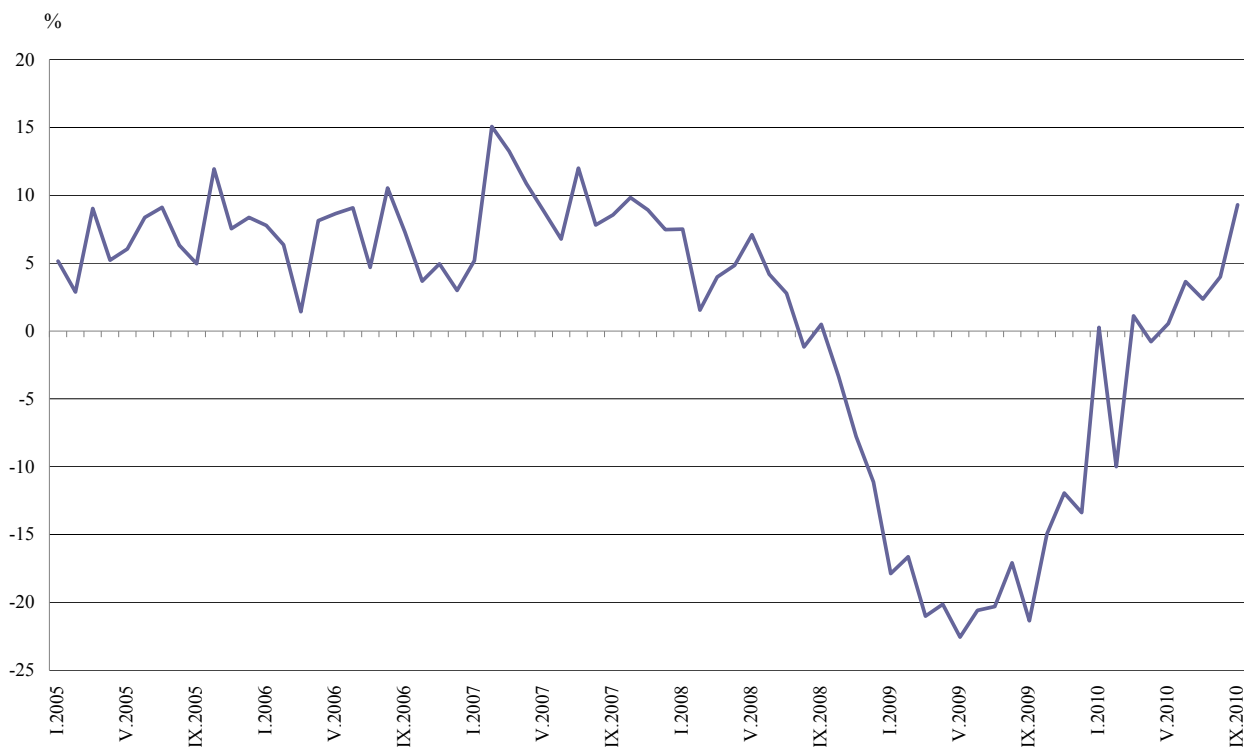


### Annual comparisons

On annual bases in September 2010 Industrial Production Index, calculated from working day adjusted data, grew in the mining and quarrying industry by 17.8%, in the manufacturing by 13.0%, while in the electricity, gas, steam and air conditioning supply a drop by 3.6% was seen.

Increases were registered in the production of intermediate goods by 18.0%, in the production of investment goods by 11.3% and in the production of energy by 1.6%.

**Figure 3. Percentage changes of Industrial Production Indices compared to the same month of the previous year (working day adjusted)**



The final data on Industrial Production and Turnover Indices for August 2010 can be found in NSI internet web-site: (<http://www.nsi.bg/otrasalen.php?otr=46>).



Table 1

**Percentage changes of Industrial Production Indices compared to the previous month<sup>1</sup>**

Economic Activities	NACE.BG - 2008 Code	2010					
		IV	V	VI	VII	VIII	IX
<b>Industry</b>	<b>B_TO_E36</b>	<b>-0.7</b>	<b>0.2</b>	<b>1.9</b>	<b>-0.4</b>	<b>2.0</b>	<b>1.6</b>
<b>Mining and quarrying</b>	<b>B</b>	<b>-6.9</b>	<b>6.7</b>	<b>7.7</b>	<b>-5.6</b>	<b>-1.4</b>	<b>3.1</b>
of which:							
Mining of coal and lignite	B05	-11.8	20.2	4.2	-5.2	6.1	0.1
Mining of metal ores	B07	9.8	-14.9	7.1	0.5	-2.6	4.4
Other mining and quarrying	B08	-17.2	14.2	0.0	-5.1	-2.1	10.5
<b>Manufacturing</b>	<b>C</b>	<b>1.0</b>	<b>1.4</b>	<b>1.5</b>	<b>-1.0</b>	<b>2.6</b>	<b>2.8</b>
of which:							
Manufacture of food products	C10	-2.6	12.3	-0.7	-3.3	0.8	4.2
Manufacture of beverages	C11	-4.3	-0.1	0.0	2.1	2.7	-0.2
Manufacture of tobacco products	C12	-17.6	-1.5	11.9	-2.4	-7.4	7.3
Manufacture of textiles	C13	8.1	0.4	-0.3	1.3	-5.7	6.5
Manufacture of wearing apparel	C14	1.7	1.1	-3.3	7.4	-3.3	5.8
Manufacture of leather and related products	C15	-1.2	-3.2	4.4	1.3	3.4	0.8
Manufacture of wood and of products of wood and cork, except furniture; manufacture of articles of straw and plaiting materials	C16	3.7	-2.9	3.8	7.2	-1.6	1.2
Manufacture of paper and paper products	C17	-0.7	8.1	30.8	-8.7	8.3	-1.4
Printing and reproduction of recorded media	C18	2.0	-0.8	-13.4	3.0	1.9	9.2
Manufacture of chemicals and chemical products	C20	-1.4	7.2	-4.1	9.4	6.5	1.8
Manufacture of basic pharmaceutical products and pharmaceutical preparations	C21	0.1	1.3	1.4	-3.0	2.4	2.1
Manufacture of rubber and plastic products	C22	0.4	6.8	-0.4	2.9	-2.9	6.3
Manufacture of other non-metallic mineral products	C23	-0.9	10.8	3.6	-8.5	1.1	2.2
Manufacture of basic metals	C24	3.8	-1.1	-6.9	6.3	-2.8	2.7
Manufacture of fabricated metal products, except machinery and equipment	C25	-8.4	7.1	5.0	-4.6	1.6	6.9
Manufacture of computer, electronic and optical products	C26	10.3	-11.9	7.1	7.9	1.1	-9.0
Manufacture of electrical equipment	C27	-5.3	5.0	-2.4	-0.1	-0.1	6.4
Manufacture of machinery and equipment n.e.c.	C28	1.5	2.5	2.9	-1.8	6.1	-0.2
Manufacture of motor vehicles, trailers and semi-trailers	C29	2.0	1.6	-1.6	-7.5	4.4	5.2
Manufacture of other transport equipment	C30	-7.2	31.8	-25.3	-9.2	48.8	-56.0
Manufacture of furniture	C31	-1.1	0.1	2.7	-0.7	5.0	11.4
Other manufacturing	C32	-4.3	-2.7	-6.8	-8.3	7.2	8.1
Repair and installation of machinery and equipment	C32	-1.3	-19.1	21.2	-1.8	15.7	-24.5
<b>Electricity, gas, steam and air conditioning supply</b>	<b>D</b>	<b>1.8</b>	<b>-3.7</b>	<b>8.9</b>	<b>1.5</b>	<b>-1.0</b>	<b>-4.1</b>
Electricity, gas, steam and air conditioning supply	D35	1.8	-3.7	8.9	1.5	-1.0	-4.1

<sup>1</sup>Seasonally adjusted.



Table 2

**Percentage changes of Industrial Production Indices compared to the same month of the previous year<sup>1</sup>**

Economic Activities	NACE.BG - 2008 Code	2010					
		IV	V	VI	VII	VIII	IX
<b>Industry</b>	<b>B_TO_E36</b>	<b>-0.8</b>	<b>0.5</b>	<b>4.2</b>	<b>2.4</b>	<b>4.0</b>	<b>9.3</b>
<b>Mining and quarrying</b>	<b>B</b>	<b>-4.8</b>	<b>-2.8</b>	<b>14.3</b>	<b>1.7</b>	<b>1.2</b>	<b>17.8</b>
of which:							
Mining of coal and lignite	B05	-27.6	4.4	34.8	14.1	42.0	21.1
Mining of metal ores	B07	24.8	-1.2	14.8	-1.0	-14.0	21.2
Other mining and quarrying	B08	-34.3	-19.8	-18.4	-18.6	-22.7	0.0
<b>Manufacturing</b>	<b>C</b>	<b>0.3</b>	<b>2.6</b>	<b>5.9</b>	<b>4.4</b>	<b>5.6</b>	<b>13.0</b>
of which:							
Manufacture of food products	C10	-4.7	13.6	9.5	2.3	7.4	16.9
Manufacture of beverages	C11	-15.9	-16.3	-9.5	-9.4	-4.5	2.5
Manufacture of tobacco products	C12	-17.5	-21.7	5.0	5.1	-19.2	-14.1
Manufacture of textiles	C13	-7.6	0.1	3.4	7.0	-3.9	10.4
Manufacture of wearing apparel	C14	-15.5	-11.2	-13.1	-6.3	-6.5	4.7
Manufacture of leather and related products	C15	-0.9	-21.0	0.7	-12.1	17.9	11.8
Manufacture of wood and of products of wood and cork, except furniture; manufacture of articles of straw and plaiting materials	C16	27.1	18.7	15.6	15.8	25.2	24.6
Manufacture of paper and paper products	C17	39.6	59.0	130.9	85.7	110.3	78.9
Printing and reproduction of recorded media	C18	8.8	5.2	-26.9	-12.5	3.5	12.4
Manufacture of chemicals and chemical products	C20	14.1	41.9	13.5	24.9	39.4	41.8
Manufacture of basic pharmaceutical products and pharmaceutical preparations	C21	8.7	18.7	25.4	11.6	8.1	24.9
Manufacture of rubber and plastic products	C22	-1.5	6.6	7.6	12.6	9.9	10.7
Manufacture of other non-metallic mineral products	C23	-23.4	-7.0	-0.4	-5.8	-2.5	4.9
Manufacture of basic metals	C24	16.1	4.7	0.1	3.1	0.5	7.7
Manufacture of fabricated metal products, except machinery and equipment	C25	-2.6	17.6	24.3	14.0	9.7	27.7
Manufacture of computer, electronic and optical products	C26	11.7	-13.5	-10.0	6.8	19.2	3.2
Manufacture of electrical equipment	C27	0.6	17.8	15.7	11.3	9.4	16.4
Manufacture of machinery and equipment n.e.c.	C28	0.1	11.2	9.8	5.6	22.1	18.3
Manufacture of motor vehicles, trailers and semi-trailers	C29	75.3	48.1	47.6	12.9	24.8	36.1
Manufacture of other transport equipment	C30	-12.1	1.2	-8.0	-33.7	-23.6	-50.5
Manufacture of furniture	C31	-3.1	-4.7	10.6	-1.1	6.2	29.5
Other manufacturing	C32	-0.1	-10.9	-20.3	-30.7	-22.7	-19.5
Repair and installation of machinery and equipment	C33	24.4	-6.1	49.0	21.4	30.6	17.3
<b>Electricity, gas, steam and air conditioning supply</b>	<b>D</b>	<b>2.0</b>	<b>-4.6</b>	<b>-3.0</b>	<b>-3.1</b>	<b>0.9</b>	<b>-3.6</b>
Electricity, gas, steam and air conditioning supply	D35	2.0	-4.6	-3.0	-3.1	0.9	-3.6

<sup>1</sup>Working day adjusted.



Table 3

**Industrial Production Indices**  
(Seasonally adjusted, 2005 = 100)

NACE.BG - 2008 Code	2009				2010								
	IX	X	XI	XII	I	II	III	IV	V	VI	VII	VIII	IX
<b>B_TO_E36</b>	<b>93.1</b>	<b>96.1</b>	<b>96.6</b>	<b>94.7</b>	<b>96.9</b>	<b>87.7</b>	<b>96.3</b>	<b>95.6</b>	<b>95.8</b>	<b>97.6</b>	<b>97.2</b>	<b>99.1</b>	<b>100.7</b>
<b>B</b>	<b>65.9</b>	<b>82.8</b>	<b>81.3</b>	<b>73.5</b>	<b>73.1</b>	<b>74.8</b>	<b>75.5</b>	<b>70.3</b>	<b>75.0</b>	<b>80.8</b>	<b>76.3</b>	<b>75.2</b>	<b>77.5</b>
<b>B05</b>	84.4	102.9	99.9	85.6	89.6	95.0	92.1	81.2	97.6	101.7	96.4	102.3	102.4
<b>B07</b>	64.5	84.5	84.1	73.7	77.3	74.4	76.8	84.3	71.7	76.8	77.2	75.2	78.5
<b>B08</b>	70.1	71.1	73.5	72.7	73.5	68.9	70.5	58.4	66.7	66.7	63.3	62.0	68.5
<b>C</b>	<b>91.1</b>	<b>94.9</b>	<b>92.4</b>	<b>89.4</b>	<b>94.3</b>	<b>81.5</b>	<b>94.1</b>	<b>95.0</b>	<b>96.3</b>	<b>97.7</b>	<b>96.7</b>	<b>99.2</b>	<b>102.0</b>
<b>C10</b>	105.9	107.1	107.4	113.2	113.3	112.1	112.1	109.2	122.6	121.7	117.7	118.6	123.6
<b>C11</b>	90.1	97.9	93.4	81.6	85.7	79.9	91.1	87.2	87.1	87.1	88.9	91.3	91.1
<b>C12</b>	126.9	104	112.8	97.2	107.4	99.6	116.8	96.3	94.9	106.2	103.6	95.9	102.9
<b>C13</b>	65.0	65.8	63.9	62.6	61.3	58.6	64.0	69.2	69.5	69.3	70.2	66.2	70.5
<b>C14</b>	69.7	73.8	69.2	68.1	68.1	64.7	65.0	66.1	66.8	64.6	69.4	67.1	71.0
<b>C15</b>	78.6	77.7	75.2	73.6	76.1	76.7	75.5	74.6	72.2	75.4	76.4	79.0	79.6
<b>C16</b>	68.9	70.3	75.3	72.6	70.7	72.0	78.9	81.8	79.4	82.4	88.3	86.9	87.9
<b>C17</b>	82.3	80.3	83.5	87.9	91.0	96.2	106.0	105.3	113.8	148.9	136.0	147.3	145.2
<b>C18</b>	103.3	119.4	117.6	110.3	119.5	107.5	114.7	117.0	116.1	100.6	103.6	105.6	115.3
<b>C20</b>	74.0	88.1	83.1	86.0	94.0	77.5	86.1	84.9	91.0	87.3	95.5	101.7	103.5
<b>C21</b>	79.6	81.3	82.2	84.0	83.8	84.2	84.1	84.2	85.3	86.5	83.9	85.9	87.7
<b>C22</b>	109.8	108.0	107.7	105.7	107.5	96.8	106.5	106.9	114.2	113.7	117.0	113.6	120.7
<b>C23</b>	79.7	79.3	78.4	71.0	72.1	72.0	77.4	76.7	85.0	88.1	80.6	81.5	83.3
<b>C24</b>	92.1	103.2	106.5	89.9	95.9	100.5	97.6	101.3	100.2	93.3	99.2	96.4	99.0
<b>C25</b>	81.8	86.6	81.6	70.5	81.9	100.3	97.4	89.2	95.5	100.3	95.7	97.2	103.9
<b>C26</b>	96.9	105.7	106.5	106.9	104.6	107.3	97.4	107.4	94.6	101.3	109.3	110.5	100.5
<b>C27</b>	131.2	130.9	136.0	136.4	155.0	135.0	145.8	138.0	144.9	141.4	141.3	141.1	150.1
<b>C28</b>	96.8	93.7	94.2	93.2	94.2	97.0	101.9	103.4	106.0	109.1	107.1	113.6	113.4
<b>C29</b>	117.6	124.8	129.5	135.2	144.0	149.4	157.3	160.5	163.1	160.5	148.4	155.0	163.1
<b>C30</b>	91.1	126.5	92.2	73.6	100.4	88.2	96.7	89.7	118.2	88.3	80.2	119.3	52.5
<b>C31</b>	87.7	85.4	86.3	85.2	91.2	91.8	93.5	92.5	92.6	95.1	94.4	99.1	110.4
<b>C32</b>	168.0	163.9	135.6	107.9	132.6	131.5	144.9	138.7	135.0	125.8	115.4	123.7	133.7
<b>C33</b>	80.9	97.7	94.0	87.3	102.7	110.1	118.1	116.6	94.3	114.3	112.2	129.8	98.0
<b>D</b>	<b>113.9</b>	<b>112.2</b>	<b>111.6</b>	<b>105.4</b>	<b>108.4</b>	<b>108.5</b>	<b>107.5</b>	<b>109.4</b>	<b>105.3</b>	<b>114.7</b>	<b>116.4</b>	<b>115.2</b>	<b>110.5</b>
<b>D35</b>	113.9	112.2	111.6	105.4	108.4	108.5	107.5	109.4	105.3	114.7	116.4	115.2	110.5



Table 4

**Industrial Production Indices**  
(Working day adjusted, 2005 = 100)

NACE.BG - 2008 Code	2007	2008	2009				2010								
	IX	IX	IX	X	XI	XII	I	II	III	IV	V	VI	VII	VIII	IX
<b>B_TO_E36</b>	<b>120.4</b>	<b>121.0</b>	<b>95.2</b>	<b>100.3</b>	<b>101.6</b>	<b>101.9</b>	<b>88.0</b>	<b>82.3</b>	<b>99.3</b>	<b>93.3</b>	<b>96.2</b>	<b>102.4</b>	<b>101.5</b>	<b>98.4</b>	<b>104.0</b>
<b>B</b>	<b>98.1</b>	<b>92.4</b>	<b>69.3</b>	<b>92.5</b>	<b>89.8</b>	<b>79.6</b>	<b>70.5</b>	<b>71.1</b>	<b>75.4</b>	<b>68.1</b>	<b>73.7</b>	<b>78.1</b>	<b>75.5</b>	<b>73.4</b>	<b>81.7</b>
<b>B05</b>	118.0	103.6	88.3	121.4	118.1	99.1	104.6	100.8	90.1	56.5	80.7	92.2	96.0	94.3	107.0
<b>B07</b>	82.6	79.5	64.6	90.9	86.6	78.4	65.1	66.9	78.8	91.0	81.3	82.4	76.0	73.1	78.4
<b>B08</b>	121.5	143.0	76.1	79.1	81.1	79.5	47.4	54.3	69.5	57.7	73.0	72.6	65.8	64.6	76.1
<b>C</b>	<b>126.0</b>	<b>126.1</b>	<b>94.9</b>	<b>99.0</b>	<b>97.3</b>	<b>95.7</b>	<b>78.2</b>	<b>72.6</b>	<b>96.6</b>	<b>94.3</b>	<b>101.2</b>	<b>105.8</b>	<b>103.5</b>	<b>99.2</b>	<b>107.2</b>
<b>C10</b>	129.0	136.2	117.8	117.5	115.7	126.3	95.9	96.1	111.9	105.9	128.3	125.3	118.8	122.5	137.7
<b>C11</b>	128.7	131.4	94.4	91.0	89.0	103.1	53.7	51.3	85.6	85.6	97.7	105.9	107.6	114.6	96.7
<b>C12</b>	100.5	119.1	162.4	139.1	135.6	98.7	60.6	47.9	96.4	72.4	106.5	116.0	119.6	115.6	139.6
<b>C13</b>	124.2	96.4	64.5	67.6	69.8	60.4	49.7	56.7	73.6	76.4	82.7	77.9	78.8	51.0	71.2
<b>C14</b>	102.7	97.3	68.9	73.1	70.4	74.9	67.1	64.6	68.6	61.4	67.0	68.7	79.9	66.3	72.2
<b>C15</b>	126.8	105.6	79.2	84.6	74.3	67.5	80.3	86.4	77.0	68.5	62.4	80.7	91.4	76.9	88.6
<b>C16</b>	117.8	120.7	77.0	76.8	85.2	73.6	55.0	61.0	79.9	80.7	83.2	88.3	93.2	88.3	96.0
<b>C17</b>	111.6	97.9	80.8	78.3	78.8	86.7	90.5	97.4	112.6	111.3	121.7	152.0	131.9	147.3	144.6
<b>C18</b>	122.2	129.5	113.3	130.2	128.3	129.9	99.7	93.5	109.5	113.5	118.2	105.6	103.7	110.6	127.4
<b>C20</b>	111.0	140.5	74.6	84.7	84.4	90.0	89.6	70.7	97.7	89.7	91.3	92.2	97.1	95.1	105.8
<b>C21</b>	115.6	103.8	76.6	86.0	89.1	92.0	77.9	85.1	86.3	82.9	90.4	99.2	73.3	84.1	95.6
<b>C22</b>	123.5	139.0	117.0	121.3	116.4	105.7	86.7	82.7	109.9	106.9	115.3	123.2	129.1	115.7	129.6
<b>C23</b>	164.5	166.8	89.7	89.8	84.5	70.0	45.2	53.3	73.2	77.4	94.8	99.4	88.9	86.5	94.1
<b>C24</b>	110.0	104.2	87.4	108.2	110.4	78.6	83.9	99.0	107.6	102.4	99.7	93.6	105.3	93.4	94.1
<b>C25</b>	141.9	124.9	86.3	83.8	86.2	93.0	58.1	89.5	100.6	90.5	98.0	108.6	99.1	98.2	110.2
<b>C26</b>	103.9	106.2	106.9	105.5	110.7	142.0	88.1	89.5	100.6	104.7	97.6	104.0	105.6	98.9	110.3
<b>C27</b>	168.2	180.3	149.5	151.4	157.8	144.2	141.0	123.1	146.9	133.0	149.5	146.1	148.3	125.7	174.0
<b>C28</b>	141.8	145.1	102.4	99.0	101.7	102.8	81.3	89.4	106.8	103.8	108.2	119.2	114.5	106.1	121.1
<b>C29</b>	163.7	136.1	118.0	137.7	127.8	121.4	135.7	145.8	170.9	163.5	162.2	174.6	135.4	123.6	160.6
<b>C30</b>	177.1	276.1	106.0	132.2	92.3	105.1	43.7	58.9	89.3	69.9	139.2	90.6	85.9	147.3	52.5
<b>C31</b>	161.9	145.9	90.5	91.3	94.0	99.5	77.2	82.5	98.6	92.4	99.8	101.1	97.9	97.7	117.2
<b>C32</b>	146.0	139.4	188.2	194.5	146.8	104.7	102.9	114.1	145.1	138.3	145.5	141.2	115.0	122.7	151.4
<b>C33</b>	133.1	173.8	86.7	101.0	102.9	117.4	70.2	90.5	120.2	107.0	90.2	122.0	119.7	131.7	101.7
<b>D</b>	<b>109.5</b>	<b>115.4</b>	<b>103.9</b>	<b>106.9</b>	<b>121.6</b>	<b>133.5</b>	<b>128.9</b>	<b>121.3</b>	<b>120.1</b>	<b>100.3</b>	<b>86.9</b>	<b>99.9</b>	<b>104.4</b>	<b>103.8</b>	<b>100.2</b>
<b>D35</b>	109.5	115.4	103.9	106.9	121.6	133.5	128.9	121.3	120.1	100.3	86.9	<b>102.4</b>	104.4	103.8	100.2