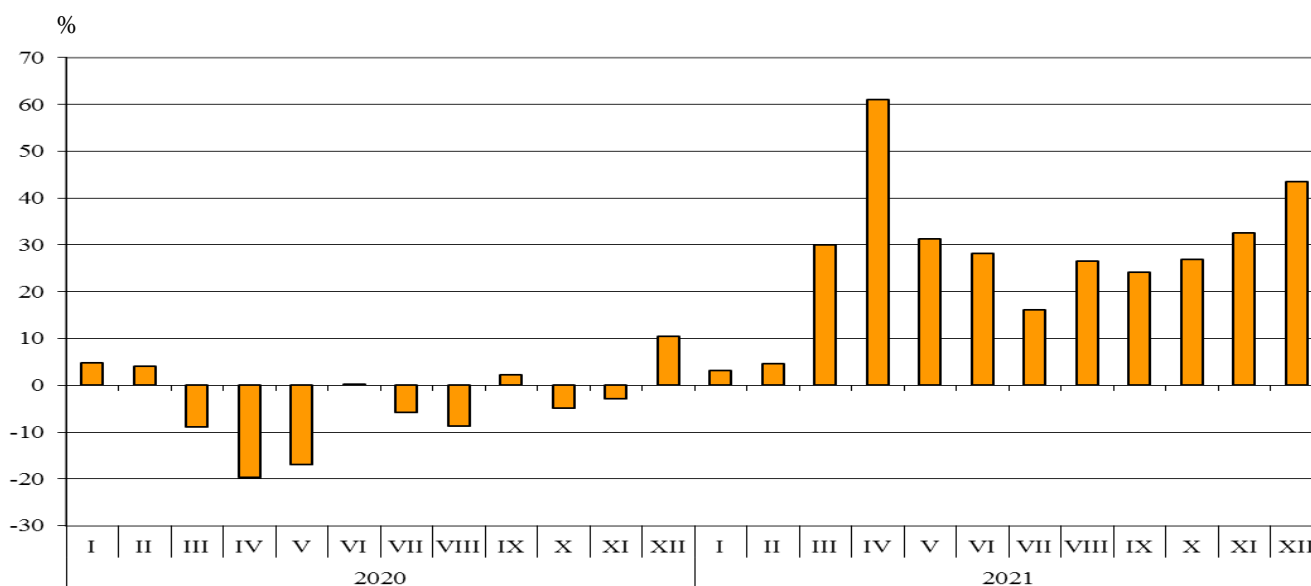


## TRADE IN GOODS OF BULGARIA WITH EU IN 2021 (PRELIMINARY DATA)

In 2021, the exports of goods from Bulgaria to the EU increased by 26.3% in comparison with 2020 and added up to 45 266.5 million BGN (Annex, Tables 1 and 2). Main trade partners of Bulgaria were Germany, Romania, Italy, Greece, France and Belgium, which accounted for 69.1% of the exports to the EU Member States (Annex, Table 3).

In December 2021, exports to the EU grew by 43.5% compared to the corresponding month of the previous year and amounted to 3 889.6 million BGN.

**Figure 1. Nominal value<sup>1</sup> change of exports of goods from Bulgaria to EU in the period 2020 - 2021  
(Compared to the same month of the previous year)**



In 2021, in the exports of goods from Bulgaria to the EU, distributed according to the **Standard International Trade Classification**, the most notable growth compared to 2020 was recorded in sections ‘Animal and vegetable oils, fats and waxes’ (105.6%) and ‘Mineral fuel, lubricants and related materials’ (98.6%) (Annex, Table 4). Fall was reported only in the section ‘Beverages and tobacco’ (15.8%).

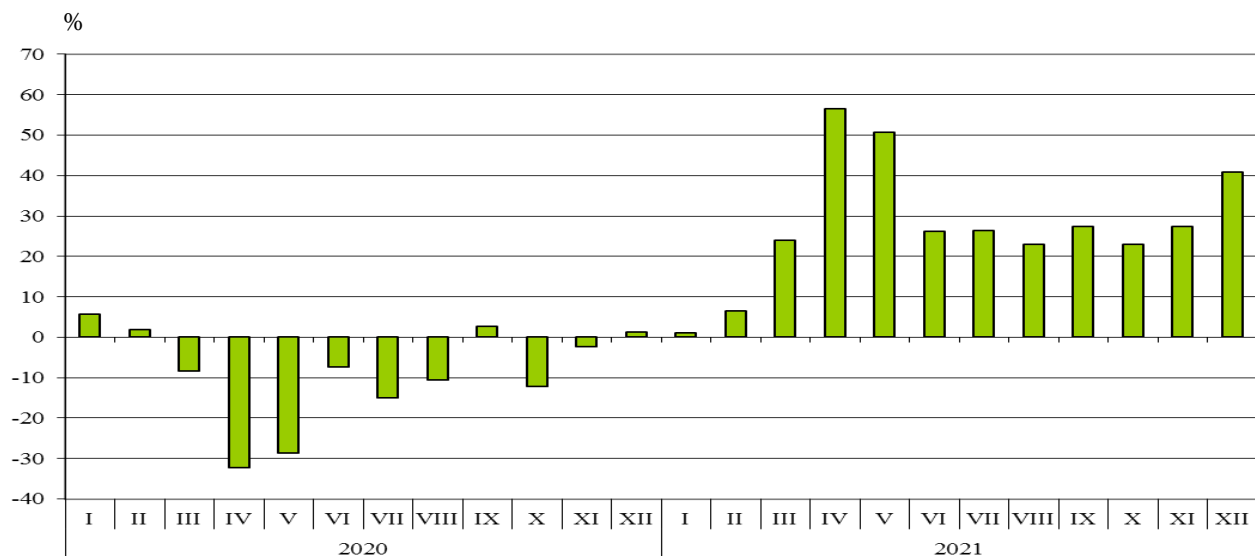
<sup>1</sup> Value changes at current prices.

**Imports** of goods to Bulgaria **from the EU** in **2021** increased by 26.7% in comparison with 2020 and added up to 46 338.0 million BGN (at CIF prices)<sup>1</sup> (Annex, Tables 1 and 2).

The largest amounts were reported for the goods imported from Germany, Romania, Italy, Greece, the Netherlands and Hungary (Annex, Table 3).

In **December 2021**, Bulgarian imports from the EU Member States grew by 40.8% compared to the corresponding month of the previous year and amounted to 4 489.0 million BGN.

**Figure 2. Nominal value<sup>2</sup> change of imports of goods to Bulgaria from EU in the period 2020 - 2021 (Compared to the same month of the previous year)**



In **2021**, in the imports of goods to Bulgaria from the EU Member States, distributed according to the **Standard International Trade Classification**, the largest growth compared to 2020 was recorded in the section ‘Animal and vegetable oils, fats and waxes’ (168.2%). Fall was not observed in any of the sections.

The **foreign trade balance** of Bulgaria (**export FOB - import CIF**) with the EU in **2021** was negative and added up to 1 071.5 million BGN (Annex, Table 1).

<sup>1</sup> Imports at FOB prices are calculated by BNB (<http://bnb.bg/Statistics/StExternalSector/StForeignTrade/StFTImports/index.htm?toLang= EN>).

<sup>2</sup> Value changes at current prices.



Annex

Table 1

Exports, imports and trade balance of Bulgaria 2020 and 2021<sup>1</sup> by months

(Million BGN)

Months/Periods	Exports - FOB			Imports - CIF <sup>2</sup>			Trade balance - FOB/CIF		
	Total	EU	Non EU	Total	EU	Non EU	Total	EU	Non EU
I.2020	4990.9	3207.9	1783.0	5299.0	3098.6	2200.4	-308.1	109.3	-417.4
II.2020	4849.6	3174.6	1675.0	5216.8	3227.4	1989.4	-367.2	-52.8	-314.4
III.2020	4506.0	2883.5	1622.5	5053.6	3223.8	1829.8	-547.6	-340.3	-207.3
<b>I - III.2020</b>	<b>14346.5</b>	<b>9266.0</b>	<b>5080.5</b>	<b>15569.4</b>	<b>9549.8</b>	<b>6019.6</b>	<b>-1222.9</b>	<b>-283.8</b>	<b>-939.1</b>
IV.2020	3890.5	2444.9	1445.6	3964.4	2299.7	1664.7	-73.9	145.2	-219.1
V.2020	3844.5	2558.3	1286.2	4084.8	2447.9	1636.9	-240.3	110.4	-350.7
VI.2020	4412.7	2959.7	1453.0	4842.2	2973.3	1868.9	-429.5	-13.6	-415.9
<b>IV - VI.2020</b>	<b>12147.7</b>	<b>7962.9</b>	<b>4184.8</b>	<b>12891.4</b>	<b>7720.9</b>	<b>5170.5</b>	<b>-743.7</b>	<b>242.0</b>	<b>-985.7</b>
<b>I - VI.2020</b>	<b>26494.2</b>	<b>17228.9</b>	<b>9265.3</b>	<b>28460.8</b>	<b>17270.7</b>	<b>11190.1</b>	<b>-1966.6</b>	<b>-41.8</b>	<b>-1924.8</b>
VII.2020	4865.8	3299.3	1566.5	5113.5	3125.4	1988.1	-247.7	173.9	-421.6
VIII.2020	4160.8	2795.2	1365.6	4602.3	2826.3	1776.0	-441.5	-31.1	-410.4
IX.2020	4885.8	3177.8	1708.0	5361.9	3270.5	2091.4	-476.1	-92.7	-383.4
<b>VII - IX.2020</b>	<b>13912.4</b>	<b>9272.3</b>	<b>4640.1</b>	<b>15077.7</b>	<b>9222.2</b>	<b>5855.5</b>	<b>-1165.3</b>	<b>50.1</b>	<b>-1215.4</b>
<b>I - IX.2020</b>	<b>40406.6</b>	<b>26501.2</b>	<b>13905.4</b>	<b>43538.5</b>	<b>26492.9</b>	<b>17045.6</b>	<b>-3131.9</b>	<b>8.3</b>	<b>-3140.2</b>
X.2020	4977.1	3324.9	1652.2	5674.6	3355.0	2319.6	-697.5	-30.1	-667.4
XI.2020	4907.5	3309.6	1597.9	5721.9	3546.8	2175.1	-814.4	-237.2	-577.2
XII.2020	4488.1	2709.6	1778.5	5192.1	3187.3	2004.8	-704.0	-477.7	-226.3
<b>X - XII.2020</b>	<b>14372.7</b>	<b>9344.1</b>	<b>5028.6</b>	<b>16588.6</b>	<b>10089.1</b>	<b>6499.5</b>	<b>-2215.9</b>	<b>-745.0</b>	<b>-1470.9</b>
<b>I - XII.2020</b>	<b>54779.3</b>	<b>35845.3</b>	<b>18934.0</b>	<b>60127.1</b>	<b>36582.0</b>	<b>23545.1</b>	<b>-5347.8</b>	<b>-736.7</b>	<b>-4611.1</b>
I.2021	4761.1	3310.9	1450.2	5050.6	3129.9	1920.7	-289.5	181.0	-470.5
II.2021	5062.8	3318.9	1743.9	5434.8	3436.0	1998.8	-372.0	-117.1	-254.9
III.2021	5823.2	3746.7	2076.5	6689.9	3999.0	2690.9	-866.7	-252.3	-614.4
<b>I - III.2021</b>	<b>15647.1</b>	<b>10376.5</b>	<b>5270.6</b>	<b>17175.3</b>	<b>10564.9</b>	<b>6610.4</b>	<b>-1528.2</b>	<b>-188.4</b>	<b>-1339.8</b>
IV.2021	5903.5	3937.2	1966.3	6080.1	3601.5	2478.6	-176.6	335.7	-512.3
V.2021	5152.0	3357.6	1794.4	6043.9	3687.1	2356.8	-891.9	-329.5	-562.4
VI.2021	5732.8	3791.0	1941.8	6441.1	3752.7	2688.4	-708.3	38.3	-746.6
<b>IV - VI.2021</b>	<b>16788.3</b>	<b>11085.8</b>	<b>5702.5</b>	<b>18565.1</b>	<b>11041.3</b>	<b>7523.8</b>	<b>-1776.8</b>	<b>44.5</b>	<b>-1821.3</b>
<b>I - VI.2021</b>	<b>32435.4</b>	<b>21462.3</b>	<b>10973.1</b>	<b>35740.4</b>	<b>21606.2</b>	<b>14134.2</b>	<b>-3305.0</b>	<b>-143.9</b>	<b>-3161.1</b>
VII.2021	5854.9	3830.2	2024.7	6354.9	3951.6	2403.3	-500.0	-121.4	-378.6
VIII.2021	5599.5	3537.0	2062.5	6254.9	3477.1	2777.8	-655.4	59.9	-715.3
IX.2021	6023.9	3945.5	2078.4	6601.1	4168.0	2433.1	-577.2	-222.5	-354.7
<b>VII - IX.2021</b>	<b>17478.3</b>	<b>11312.7</b>	<b>6165.6</b>	<b>19210.9</b>	<b>11596.7</b>	<b>7614.2</b>	<b>-1732.6</b>	<b>-284.0</b>	<b>-1448.6</b>
<b>I - IX.2021</b>	<b>49913.7</b>	<b>32775.0</b>	<b>17138.7</b>	<b>54951.3</b>	<b>33202.9</b>	<b>21748.4</b>	<b>-5037.6</b>	<b>-427.9</b>	<b>-4609.7</b>
X.2021	6111.5	4217.0	1894.5	6873.9	4125.6	2748.3	-762.4	91.4	-853.8
XI.2021	6213.4	4384.9	1828.5	7553.0	4520.5	3032.5	-1339.6	-135.6	-1204.0
XII.2021	5955.1	3889.6	2065.5	7338.2	4489.0	2849.2	-1383.1	-599.4	-783.7
<b>X - XII.2021</b>	<b>18280.0</b>	<b>12491.5</b>	<b>5788.5</b>	<b>21765.1</b>	<b>13135.1</b>	<b>8630.0</b>	<b>-3485.1</b>	<b>-643.6</b>	<b>-2841.5</b>
<b>I - XII.2021</b>	<b>68193.7</b>	<b>45266.5</b>	<b>22927.2</b>	<b>76716.4</b>	<b>46338.0</b>	<b>30378.4</b>	<b>-8522.7</b>	<b>-1071.5</b>	<b>-7451.2</b>

<sup>1</sup> Data are preliminary as of March 14, 2022.

<sup>2</sup> Imports at FOB prices are calculated by BNB

([http://bnb.bg/Statistics/StExternalSector/StForeignTrade/StFTImports/index.htm?toLang=\\_EN&toLang=\\_EN](http://bnb.bg/Statistics/StExternalSector/StForeignTrade/StFTImports/index.htm?toLang=_EN&toLang=_EN)).

Table 2

**Value changes of exports and imports of Bulgaria in 2021<sup>1</sup>  
compared to the same period of the previous year**

(Per cent)

Months/Periods	Exports - FOB			Imports - CIF		
	Total	EU	Non EU	Total	EU	Non EU
I	-4.6	3.2	-18.7	-4.7	1.0	-12.7
II	4.4	4.5	4.1	4.2	6.5	0.5
III	29.2	29.9	28.0	32.4	24.0	47.1
<b>I - III</b>	<b>9.1</b>	<b>12.0</b>	<b>3.7</b>	<b>10.3</b>	<b>10.6</b>	<b>9.8</b>
IV	51.7	61.0	36.0	53.4	56.6	48.9
V	34.0	31.2	39.5	48.0	50.6	44.0
VI	29.9	28.1	33.6	33.0	26.2	43.8
<b>IV - VI</b>	<b>38.2</b>	<b>39.2</b>	<b>36.3</b>	<b>44.0</b>	<b>43.0</b>	<b>45.5</b>
<b>I - VI</b>	<b>22.4</b>	<b>24.6</b>	<b>18.4</b>	<b>25.6</b>	<b>25.1</b>	<b>26.3</b>
VII	20.3	16.1	29.2	24.3	26.4	20.9
VIII	34.6	26.5	51.0	35.9	23.0	56.4
IX	23.3	24.2	21.7	23.1	27.4	16.3
<b>VII - IX</b>	<b>25.6</b>	<b>22.0</b>	<b>32.9</b>	<b>27.4</b>	<b>25.7</b>	<b>30.0</b>
<b>I - IX</b>	<b>23.5</b>	<b>23.7</b>	<b>23.3</b>	<b>26.2</b>	<b>25.3</b>	<b>27.6</b>
X	22.8	26.8	14.7	21.1	23.0	18.5
XI	26.6	32.5	14.4	32.0	27.5	39.4
XII	32.7	43.5	16.1	41.3	40.8	42.1
<b>X - XII</b>	<b>27.2</b>	<b>33.7</b>	<b>15.1</b>	<b>31.2</b>	<b>30.2</b>	<b>32.8</b>
<b>I - XII</b>	<b>24.5</b>	<b>26.3</b>	<b>21.1</b>	<b>27.6</b>	<b>26.7</b>	<b>29.0</b>

<sup>1</sup> Data are preliminary as of March 14, 2022.



**Table 3**  
**Exports, imports and trade balance by groups of countries and main partner countries<sup>1</sup>**  
**of Bulgaria in 2020 and 2021<sup>2</sup>**

Countries and groups of countries	Exports - FOB			Imports - CIF			Trade balance - FOB/CIF	
	2020	2021	Change compared to the same period of the previous year - %	2020	2021	Change compared to the same period of the previous year - %	2020	2021
	Million BGN			Million BGN			Million BGN	
<b>Total</b>	<b>54779.3</b>	<b>68193.7</b>	<b>24.5</b>	<b>60127.1</b>	<b>76716.4</b>	<b>27.6</b>	<b>-5347.8</b>	<b>-8522.7</b>
<b>EU</b>	<b>35845.3</b>	<b>45266.5</b>	<b>26.3</b>	<b>36582.0</b>	<b>46338.0</b>	<b>26.7</b>	<b>-736.7</b>	<b>-1071.5</b>
Austria	1049.9	1604.4	52.8	1614.2	2027.3	25.6	-564.3	-422.9
Belgium	1903.8	2208.0	16.0	1143.5	1481.2	29.5	760.3	726.8
Croatia	323.1	636.5	97.0	353.0	370.7	5.0	-29.9	265.8
Cyprus	227.7	274.4	20.5	91.0	149.6	64.4	136.7	124.8
Czechia	1266.2	1489.1	17.6	1596.1	1889.9	18.4	-329.9	-400.8
Denmark	380.1	645.0	69.7	290.5	349.3	20.2	89.6	295.7
Estonia	41.1	68.2	65.9	52.3	87.4	67.1	-11.2	-19.2
Finland	126.4	151.7	20.0	157.1	166.2	5.8	-30.7	-14.5
France	2100.4	2478.4	18.0	1736.1	2016.5	16.2	364.3	461.9
Germany	8773.8	10133.4	15.5	7262.2	9388.9	29.3	1511.6	744.5
Greece	3637.8	4483.9	23.3	2965.5	4052.8	36.7	672.3	431.1
Hungary	951.9	1249.6	31.3	2346.5	2805.0	19.5	-1394.6	-1555.4
Ireland	129.8	128.0	-1.4	362.7	497.6	37.2	-232.9	-369.6
Italy	3760.3	5127.3	36.4	4261.8	5065.3	18.9	-501.5	62.0
Latvia	83.7	75.5	-9.8	52.6	62.0	17.9	31.1	13.5
Lithuania	160.4	170.8	6.5	142.1	176.4	24.1	18.3	-5.6
Luxembourg	30.0	110.5	268.3	75.8	107.9	42.3	-45.8	2.6
Malta	46.9	56.4	20.3	59.8	27.6	-53.8	-12.9	28.8
Netherlands	1440.1	1703.1	18.3	2382.6	3254.6	36.6	-942.5	-1551.5
Poland	1359.6	1717.1	26.3	2224.1	2738.6	23.1	-864.5	-1021.5
Portugal	202.6	251.1	23.9	128.3	237.9	85.4	74.3	13.2
Romania	4976.0	6865.7	38.0	4397.3	5784.2	31.5	578.7	1081.5
Slovakia	526.7	565.9	7.4	838.2	959.9	14.5	-311.5	-394.0
Slovenia	359.9	419.8	16.6	458.9	571.0	24.4	-99.0	-151.2
Spain	1308.8	1860.7	42.2	1145.9	1449.1	26.5	162.9	411.6
Sweden	483.5	532.7	10.2	368.8	484.7	31.4	114.7	48.0
Not specified	194.8	259.3	33.1	75.1	136.4	81.6	119.7	122.9

<sup>1</sup> Partner country:

- In case of exports (or dispatches) is the country (or Member State) of final destination of the goods.
- In case of imports (or arrivals) is the country (or Member State) of consignment of the goods.

<sup>2</sup> Data are preliminary as of March 14, 2022.

Table 3

Exports, imports and trade balance by groups of countries and main partner countries<sup>1</sup>  
of Bulgaria in 2020 and 2021<sup>2</sup>

(Continued)

Countries and groups of countries	Exports - FOB			Imports - CIF			Trade balance - FOB/CIF	
	2020	2021	Change compared to the same period of the previous year - %	2020	2021	Change compared to the same period of the previous year - %	2020	2021
	Million BGN			Million BGN			Million BGN	
<b>Non EU countries</b>	<b>18934.0</b>	<b>22927.2</b>	<b>21.1</b>	<b>23545.1</b>	<b>30378.4</b>	<b>29.0</b>	<b>-4611.1</b>	<b>-7451.2</b>
<b>CIS<sup>3</sup></b>	<b>1268.2</b>	<b>1316.5</b>	<b>3.8</b>	<b>3888.0</b>	<b>6270.0</b>	<b>61.3</b>	<b>-2619.8</b>	<b>-4953.5</b>
of which:								
Kazakhstan	64.8	75.9	17.1	27.4	3.8	-86.1	37.4	72.1
Russian Federation	826.6	848.5	2.6	3674.2	5828.5	58.6	-2847.6	-4980.0
<b>OECD<sup>4</sup></b>	<b>7343.5</b>	<b>8992.1</b>	<b>22.4</b>	<b>7852.2</b>	<b>9933.7</b>	<b>26.5</b>	<b>-508.7</b>	<b>-941.6</b>
of which:								
Canada	232.3	134.1	-42.3	295.0	242.9	-17.7	-62.7	-108.8
Chile	23.0	31.9	38.7	267.8	531.1	98.3	-244.8	-499.2
Israel	204.7	373.1	82.3	127.1	336.3	164.6	77.6	36.8
Japan	99.9	105.4	5.5	297.9	401.0	34.6	-198.0	-295.6
Korea, Republic of	185.9	414.5	123.0	262.3	277.2	5.7	-76.4	137.3
Turkey	3531.6	4193.6	18.7	4264.5	6009.0	40.9	-732.9	-1815.4
United Kingdom <sup>5</sup>	1303.7	1250.2	-4.1	763.4	611.9	-19.8	540.3	638.3
United States	1105.1	1641.0	48.5	773.3	558.6	-27.8	331.8	1082.4
<b>EFTA<sup>6</sup></b>	<b>447.8</b>	<b>566.2</b>	<b>26.4</b>	<b>528.9</b>	<b>623.1</b>	<b>17.8</b>	<b>-81.1</b>	<b>-56.9</b>
of which:								
Norway	91.3	104.2	14.1	44.7	57.4	28.4	46.6	46.8
Switzerland	354.2	457.7	29.2	478.0	561.0	17.4	-123.8	-103.3

<sup>1</sup> Partner country:

- In case of exports (or dispatches) is the country (or Member State) of final destination of the goods.
- In case of imports (or arrivals) is the country (or Member State) of consignment of the goods.

<sup>2</sup> Data are preliminary as of March 14, 2022.

<sup>3</sup> CIS includes: Azerbaijan; Armenia; Belarus; Kazakhstan; Kyrgyzstan; Moldova, Republic of; Russian Federation; Tajikistan; Turkmenistan; Uzbekistan.

<sup>4</sup> OECD includes: Australia; Virgin Islands (US); United States; Iceland; Canada; Mexico; New Zealand; Norway; Korea, Republic of; Turkey; United Kingdom; Switzerland; Japan; Israel and Chile.

<sup>5</sup> The United Kingdom includes: Northern Ireland; Great Britain; Channel Islands and Isle of Man.

<sup>6</sup> EFTA includes: Norway; Switzerland; Iceland and Liechtenstein.

Table 3

**Exports, imports and trade balance by groups of countries and main partner countries<sup>1</sup>  
of Bulgaria in 2020 and 2021<sup>2</sup>**

(Continued and end)

Countries and groups of countries	Exports - FOB			Imports - CIF			Trade balance - FOB/CIF	
	2020	2021	Change compared to the same period of the previous year - %	2020	2021	Change compared to the same period of the previous year - %	2020	2021
	Million BGN			Million BGN			Million BGN	
<b>Countries not included in the upper groups</b>								
Albania	174.5	226.3	29.7	76.8	79.2	3.1	97.7	147.1
Bosnia and Herzegovina	158.3	180.7	14.2	41.2	58.0	40.8	117.1	122.7
Brazil	85.7	76.9	-10.3	203.4	352.6	73.4	-117.7	-275.7
China	1806.3	2190.1	21.2	3057.2	4128.7	35.0	-1250.9	-1938.6
Egypt	328.8	455.4	38.5	659.2	513.8	-22.1	-330.4	-58.4
Georgia	258.9	378.9	46.3	923.2	723.6	-21.6	-664.3	-344.7
India	222.3	270.2	21.5	283.3	391.4	38.2	-61.0	-121.2
Indonesia	69.5	125.7	80.9	235.8	59.6	-74.7	-166.3	66.1
Iran, Islamic Republic of	187.3	166.2	-11.3	40.3	116.6	189.3	147.0	49.6
Peru	14.2	8.9	-37.3	539.1	624.2	15.8	-524.9	-615.3
Republic of North Macedonia	851.9	1129.3	32.6	592.6	728.4	22.9	259.3	400.9
Serbia	969.2	1453.4	50.0	1202.6	1497.3	24.5	-233.4	-43.9
Singapore	39.9	56.2	40.9	66.8	80.1	19.9	-26.9	-23.9
South Africa	215.2	158.5	-26.3	56.0	78.2	39.6	159.2	80.3
Syrian Arab Republic	6.8	8.5	25.0	0.8	3.9	387.5	6.0	4.6
Taiwan	80.1	69.7	-13.0	214.6	332.5	54.9	-134.5	-262.8
Tunisia	256.3	426.9	66.6	30.4	38.9	28.0	225.9	388.0
Ukraine	445.6	793.7	78.1	1141.2	1634.5	43.2	-695.6	-840.8
United Arab Emirates	139.2	155.1	11.4	57.6	71.6	24.3	81.6	83.5
Viet Nam	78.6	184.2	134.4	132.6	189.1	42.6	-54.0	-4.9

<sup>1</sup> Partner country:

- In case of exports (or dispatches) is the country (or Member State) of final destination of the goods.
- In case of imports (or arrivals) is the country (or Member State) of consignment of the goods.

<sup>2</sup> Data are preliminary as of March 14, 2022.

**Table 4**

**Exports, imports and trade balance of Bulgaria by sections of SITC, rev. 4  
in 2020 and 2021<sup>1</sup>**

Sections by SITC	Exports - FOB			Imports - CIF			Trade balance - FOB/CIF	
	2020	2021	Change compared to the same period of the previous year - %	2020	2021	Change compared to the same period of the previous year - %	2020	2021
	Million BGN			Million BGN			Million BGN	
<b>Total</b>	<b>54779.3</b>	<b>68193.7</b>	<b>24.5</b>	<b>60127.1</b>	<b>76716.4</b>	<b>27.6</b>	<b>-5347.8</b>	<b>-8522.7</b>
<b>of which: EU</b>	<b>35845.3</b>	<b>45266.5</b>	<b>26.3</b>	<b>36582.0</b>	<b>46338.0</b>	<b>26.7</b>	<b>-736.7</b>	<b>-1071.5</b>
Food and live animals	6447.6	8002.4	24.1	5157.2	5796.7	12.4	1290.4	2205.7
of which: EU	4090.4	4790.5	17.1	4009.9	4466.6	11.4	80.5	323.9
Beverages and tobacco	730.3	633.8	-13.2	1156.4	1256.3	8.6	-426.1	-622.5
of which: EU	512.6	431.8	-15.8	915.5	957.8	4.6	-402.9	-526.0
Crude materials, inedible (except fuel)	3907.1	5206.5	33.3	6270.0	6802.6	8.5	-2362.9	-1596.1
of which: EU	2356.3	3098.1	31.5	1277.2	1862.2	45.8	1079.1	1235.9
Mineral fuel, lubricants and related materials	2545.1	4113.8	61.6	5116.4	8797.4	71.9	-2571.3	-4683.6
of which: EU	993.9	1973.6	98.6	1482.7	2630.9	77.4	-488.8	-657.3
Animal and vegetable oils, fats and waxes	834.6	1363.0	63.3	309.9	513.2	65.6	524.7	849.8
of which: EU	460.7	947.0	105.6	133.9	359.1	168.2	326.8	587.9
Chemical and related products n.e.c.	6400.9	7937.7	24.0	9147.3	11845.1	29.5	-2746.4	-3907.4
of which: EU	3848.5	5176.1	34.5	6921.8	8844.9	27.8	-3073.3	-3668.8
Manufactured goods classified chiefly by material	12502.3	15847.2	26.8	10172.3	13209.6	29.9	2330.0	2637.6
of which: EU	8050.0	10537.2	30.9	5630.7	6890.4	22.4	2419.3	3646.8
Machinery and transport equipment	12975.7	15556.9	19.9	17070.3	21387.0	25.3	-4094.6	-5830.1
of which: EU	9723.9	11700.4	20.3	12283.1	15522.4	26.4	-2559.2	-3822.0
Miscellaneous manufactured articles	8212.5	9276.0	12.9	5259.9	6526.2	24.1	2952.6	2749.8
of which: EU	5649.2	6444.5	14.1	3511.2	4292.9	22.3	2138.0	2151.6
Commodities and transactions n.e.c.	223.2	256.4	14.9	467.4	582.3	24.6	-244.2	-325.9
of which: EU	159.8	167.3	4.7	416.0	510.8	22.8	-256.2	-343.5

<sup>1</sup> Data are preliminary as of March 14, 2022.