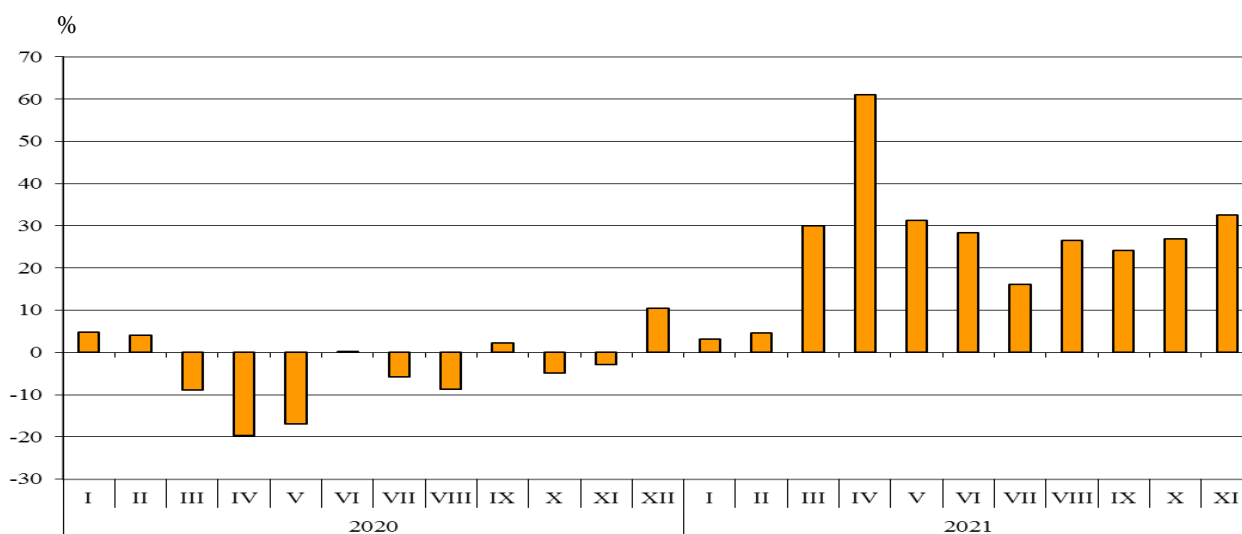


TRADE IN GOODS OF BULGARIA WITH EU IN THE PERIOD JANUARY - NOVEMBER 2021 (PRELIMINARY DATA)

In the period **January - November 2021**, the exports of goods from Bulgaria to the EU increased by 24.9% in comparison with the same period of 2020 and added up to 41 391.1 million BGN (Annex, Tables 1 and 2). Main trade partners of Bulgaria were Germany, Romania, Italy, Greece, France and Belgium, which accounted for 69.0% of the exports to the EU Member States (Annex, Table 3).

In **November 2021**, exports to the EU grew by 32.5% compared to the corresponding month of the previous year and amounted to 4 384.3 million BGN.

**Figure 1. Nominal value¹ change of exports of goods from Bulgaria to EU in the period 2020 - 2021
(Compared to the same month of the previous year)**



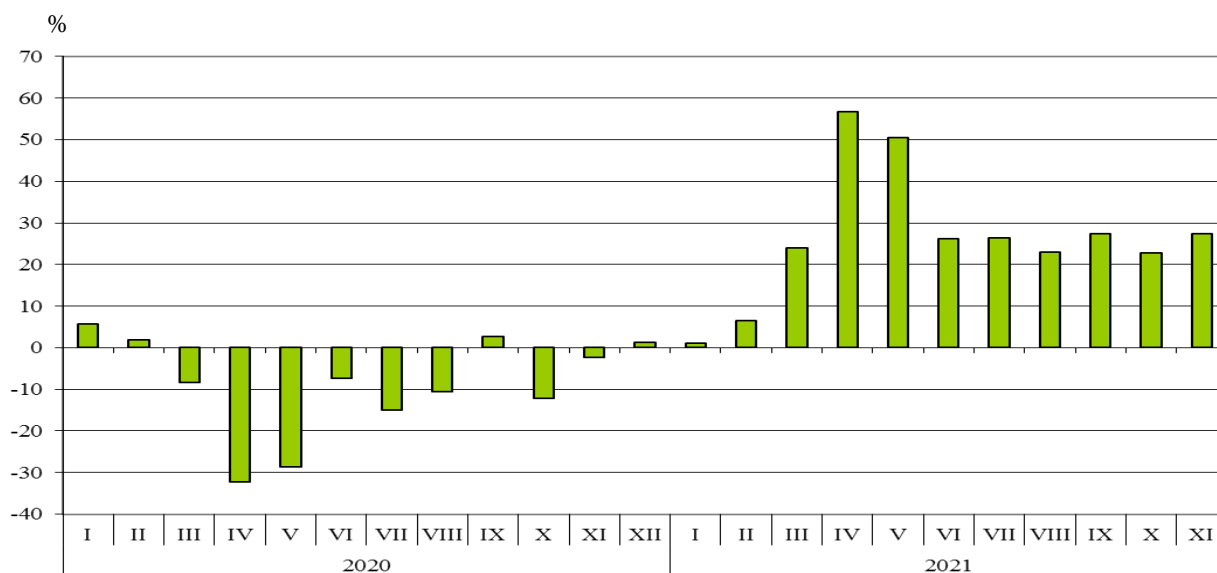
In the period **January - November 2021**, in the exports of goods from Bulgaria to the EU, distributed according to the **Standard International Trade Classification**, the most notable growth compared to the same period of 2020 was recorded in sections ‘Animal and vegetable oils, fats and waxes’ (113.2%) and ‘Mineral fuel, lubricants and related materials’ (76.9%) (Annex, Table 4). Fall was reported only in the section ‘Beverages and tobacco’ (15.7%).

¹ Value changes at current prices.

Imports of goods to Bulgaria from the EU in the period **January - November 2021** increased by 25.3% in comparison with the same period of 2020 and added up to 41 837.4 million BGN (at CIF prices)¹ (Annex, Tables 1 and 2). The largest amounts were reported for the goods imported from Germany, Romania, Italy, Greece, the Netherlands and Hungary (Annex, Table 3).

In **November 2021**, Bulgarian imports from the EU Member States grew by 27.4% compared to the corresponding month of the previous year and amounted to 4 519.2 million BGN.

Figure 2. Nominal value² change of imports of goods to Bulgaria from EU in the period 2020 - 2021 (Compared to the same month of the previous year)



In the period **January - November 2021**, in the imports of goods to Bulgaria from the EU Member States, distributed according to the **Standard International Trade Classification**, the largest growth compared to the corresponding period of 2020 was recorded in the section ‘Animal and vegetable oils, fats and waxes’ (164.7%). Fall was not observed in any of the sections.

The **foreign trade balance of Bulgaria (export FOB - import CIF) with the EU** in the period **January - November 2021** was negative and added up to 446.3 million BGN (Annex, Table 1).

¹ Imports at FOB prices are calculated by BNB (<http://bnb.bg/Statistics/StExternalSector/StForeignTrade/StFTImports/index.htm?toLang= EN>).

² Value changes at current prices.

Annex

Table 1

Exports, imports and trade balance of Bulgaria in the period
January - November 2020 and 2021¹ by months

(Million BGN)

Months/Periods	Exports - FOB			Imports - CIF ²			Trade balance - FOB/CIF		
	Total	EU	Non EU	Total	EU	Non EU	Total	EU	Non EU
I.2020	4990.9	3207.9	1783.0	5299.0	3098.6	2200.4	-308.1	109.3	-417.4
II.2020	4849.6	3174.6	1675.0	5216.8	3227.4	1989.4	-367.2	-52.8	-314.4
III.2020	4506.0	2883.5	1622.5	5053.6	3223.8	1829.8	-547.6	-340.3	-207.3
I - III.2020	14346.5	9266.0	5080.5	15569.4	9549.8	6019.6	-1222.9	-283.8	-939.1
IV.2020	3890.5	2444.9	1445.6	3964.4	2299.7	1664.7	-73.9	145.2	-219.1
V.2020	3844.5	2558.3	1286.2	4084.8	2447.9	1636.9	-240.3	110.4	-350.7
VI.2020	4412.7	2959.7	1453.0	4842.2	2973.3	1868.9	-429.5	-13.6	-415.9
IV - VI.2020	12147.7	7962.9	4184.8	12891.4	7720.9	5170.5	-743.7	242.0	-985.7
I - VI.2020	26494.2	17228.9	9265.3	28460.8	17270.7	11190.1	-1966.6	-41.8	-1924.8
VII.2020	4865.8	3299.3	1566.5	5113.5	3125.4	1988.1	-247.7	173.9	-421.6
VIII.2020	4160.8	2795.2	1365.6	4602.3	2826.3	1776.0	-441.5	-31.1	-410.4
IX.2020	4885.8	3177.8	1708.0	5361.9	3270.5	2091.4	-476.1	-92.7	-383.4
VII - IX.2020	13912.4	9272.3	4640.1	15077.7	9222.2	5855.5	-1165.3	50.1	-1215.4
I - IX.2020	40406.6	26501.2	13905.4	43538.5	26492.9	17045.6	-3131.9	8.3	-3140.2
X.2020	4977.1	3324.9	1652.2	5674.6	3355.0	2319.6	-697.5	-30.1	-667.4
XI.2020	4907.5	3309.6	1597.9	5721.9	3546.8	2175.1	-814.4	-237.2	-577.2
I - XI.2020	50291.2	33135.7	17155.5	54935.0	33394.7	21540.3	-4643.8	-259.0	-4384.8
I.2021	4761.0	3310.9	1450.1	5051.1	3130.4	1920.7	-290.1	180.5	-470.6
II.2021	5061.9	3319.2	1742.7	5434.6	3435.8	1998.8	-372.7	-116.6	-256.1
III.2021	5821.7	3747.0	2074.7	6689.8	3998.6	2691.2	-868.1	-251.6	-616.5
I - III.2021	15644.6	10377.1	5267.5	17175.5	10564.8	6610.7	-1530.9	-187.7	-1343.2
IV.2021	5891.6	3937.9	1953.7	6080.7	3602.0	2478.7	-189.1	335.9	-525.0
V.2021	5148.6	3359.7	1788.9	6043.0	3686.3	2356.7	-894.4	-326.6	-567.8
VI.2021	5701.3	3799.1	1902.2	6440.6	3752.4	2688.2	-739.3	46.7	-786.0
IV - VI.2021	16741.5	11096.7	5644.8	18564.3	11040.7	7523.6	-1822.8	56.0	-1878.8
I - VI.2021	32386.1	21473.8	10912.3	35739.8	21605.5	14134.3	-3353.7	-131.7	-3222.0
VII.2021	5814.3	3831.5	1982.8	6354.8	3951.4	2403.4	-540.5	-119.9	-420.6
VIII.2021	5541.1	3537.6	2003.5	6254.3	3476.5	2777.8	-713.2	61.1	-774.3
IX.2021	5988.9	3947.1	2041.8	6603.6	4166.4	2437.2	-614.7	-219.3	-395.4
VII - IX.2021	17344.3	11316.2	6028.1	19212.7	11594.3	7618.4	-1868.4	-278.1	-1590.3
I - IX.2021	49730.4	32790.0	16940.4	54952.5	33199.8	21752.7	-5222.1	-409.8	-4812.3
X.2021	6065.9	4216.8	1849.1	6852.1	4118.4	2733.7	-786.2	98.4	-884.6
XI.2021	6188.7	4384.3	1804.4	7555.0	4519.2	3035.8	-1366.3	-134.9	-1231.4
I - XI.2021	61985.0	41391.1	20593.9	69359.6	41837.4	27522.2	-7374.6	-446.3	-6928.3

¹ Data are preliminary as of February 10, 2022.

² Imports at FOB prices are calculated by BNB

(http://bnb.bg/Statistics/StExternalSector/StForeignTrade/StFTImports/index.htm?toLang=_EN&toLang=_EN).

Table 2

**Value changes of exports and imports of Bulgaria in the period
January - November 2021¹ compared to the same period of the
previous year**

(Per cent)

Months/Periods	Exports - FOB			Imports - CIF		
	Total	EU	Non EU	Total	EU	Non EU
I	-4.6	3.2	-18.7	-4.7	1.0	-12.7
II	4.4	4.6	4.0	4.2	6.5	0.5
III	29.2	29.9	27.9	32.4	24.0	47.1
I - III	9.0	12.0	3.7	10.3	10.6	9.8
IV	51.4	61.1	35.1	53.4	56.6	48.9
V	33.9	31.3	39.1	47.9	50.6	44.0
VI	29.2	28.4	30.9	33.0	26.2	43.8
IV - VI	37.8	39.4	34.9	44.0	43.0	45.5
I - VI	22.2	24.6	17.8	25.6	25.1	26.3
VII	19.5	16.1	26.6	24.3	26.4	20.9
VIII	33.2	26.6	46.7	35.9	23.0	56.4
IX	22.6	24.2	19.5	23.2	27.4	16.5
VII - IX	24.7	22.0	29.9	27.4	25.7	30.1
I - IX	23.1	23.7	21.8	26.2	25.3	27.6
X	21.9	26.8	11.9	20.8	22.8	17.9
XI	26.1	32.5	12.9	32.0	27.4	39.6
I - XI	23.3	24.9	20.0	26.3	25.3	27.8

¹ Data are preliminary as of February 10, 2022.



Table 3

Exports, imports and trade balance by groups of countries and main partner countries¹
of Bulgaria in the period
January - November 2020 and 2021²

Countries and groups of countries	Exports - FOB			Imports - CIF			Trade balance - FOB/CIF	
	2020	2021	Change compared to the same period of the previous year - %	2020	2021	Change compared to the same period of the previous year - %	2020	2021
	Million BGN			Million BGN			Million BGN	
Total	50291.2	61985.0	23.3	54935.0	69359.6	26.3	-4643.8	-7374.6
EU	33135.7	41391.1	24.9	33394.7	41837.4	25.3	-259.0	-446.3
Austria	979.8	1466.1	49.6	1493.6	1818.5	21.8	-513.8	-352.4
Belgium	1772.7	1961.9	10.7	1001.6	1363.8	36.2	771.1	598.1
Croatia	292.6	592.7	102.6	296.1	346.4	17.0	-3.5	246.3
Cyprus	210.9	253.0	20.0	83.8	143.1	70.8	127.1	109.9
Czechia	1166.1	1361.8	16.8	1449.6	1730.0	19.3	-283.5	-368.2
Denmark	353.0	575.1	62.9	266.3	317.0	19.0	86.7	258.1
Estonia	38.3	60.4	57.7	47.7	81.4	70.6	-9.4	-21.0
Finland	117.4	138.7	18.1	145.5	147.6	1.4	-28.1	-8.9
France	1943.2	2276.1	17.1	1586.5	1835.5	15.7	356.7	440.6
Germany	8146.8	9397.7	15.4	6620.4	8587.6	29.7	1526.4	810.1
Greece	3324.3	4089.0	23.0	2745.6	3525.0	28.4	578.7	564.0
Hungary	880.1	1161.8	32.0	2117.7	2538.3	19.9	-1237.6	-1376.5
Ireland	124.0	117.8	-5.0	333.6	468.4	40.4	-209.6	-350.6
Italy	3467.6	4647.8	34.0	3887.6	4578.0	17.8	-420.0	69.8
Latvia	75.9	69.4	-8.6	45.1	55.3	22.6	30.8	14.1
Lithuania	147.9	157.4	6.4	128.9	162.1	25.8	19.0	-4.7
Luxembourg	28.0	78.0	178.6	69.3	98.5	42.1	-41.3	-20.5
Malta	44.4	43.1	-2.9	57.7	25.3	-56.2	-13.3	17.8
Netherlands	1357.0	1573.2	15.9	2185.8	2833.4	29.6	-828.8	-1260.2
Poland	1247.8	1579.2	26.6	2036.8	2510.6	23.3	-789.0	-931.4
Portugal	192.9	237.4	23.1	116.4	203.0	74.4	76.5	34.4
Romania	4574.3	6193.4	35.4	4031.2	5198.3	29.0	543.1	995.1
Slovakia	490.3	528.2	7.7	781.2	887.1	13.6	-290.9	-358.9
Slovenia	340.7	391.9	15.0	416.3	515.5	23.8	-75.6	-123.6
Spain	1188.9	1703.0	43.2	1045.7	1303.2	24.6	143.2	399.8
Sweden	448.1	496.8	10.9	346.8	443.7	27.9	101.3	53.1
Not specified	182.7	240.2	31.5	57.9	120.8	108.6	124.8	119.4

¹ Partner country:

- In case of exports (or dispatches) is the country (or Member State) of final destination of the goods.
- In case of imports (or arrivals) is the country (or Member State) of consignment of the goods.

² Data are preliminary as of February 10, 2022.



Table 3

**Exports, imports and trade balance by groups of countries and main partner countries¹
of Bulgaria in the period
January - November 2020 and 2021²**

(Continued)

Countries and groups of countries	Exports - FOB			Imports - CIF			Trade balance - FOB/CIF	
	2020	2021	Change compared to the same period of the previous year - %	2020	2021	Change compared to the same period of the previous year - %	2020	2021
	Million BGN			Million BGN			Million BGN	
Non EU countries	17155.5	20593.9	20.0	21540.3	27522.2	27.8	-4384.8	-6928.3
CIS³	1172.6	1203.1	2.6	3569.5	5457.3	52.9	-2396.9	-4254.2
of which:								
Kazakhstan	59.0	63.5	7.6	23.3	3.7	-84.1	35.7	59.8
Russian Federation	771.2	783.2	1.6	3375.7	5064.2	50.0	-2604.5	-4281.0
OECD⁴	6645.3	8118.2	22.2	7129.9	9079.1	27.3	-484.6	-960.9
of which:								
Canada	223.4	118.0	-47.2	287.5	234.7	-18.4	-64.1	-116.7
Chile	19.2	28.5	48.4	267.4	530.5	98.4	-248.2	-502.0
Israel	188.8	342.3	81.3	122.9	328.8	167.5	65.9	13.5
Japan	91.7	96.2	4.9	271.0	359.4	32.6	-179.3	-263.2
Korea, Republic of	148.1	389.2	162.8	241.2	256.5	6.3	-93.1	132.7
Turkey	3166.8	3803.5	20.1	3835.4	5411.4	41.1	-668.6	-1607.9
United Kingdom ⁵	1197.4	1152.1	-3.8	678.7	550.3	-18.9	518.7	601.8
United States	1000.8	1420.4	41.9	687.0	518.6	-24.5	313.8	901.8
EFTA⁶	417.3	525.1	25.8	488.7	560.2	14.6	-71.4	-35.1
of which:								
Norway	85.4	97.9	14.6	42.1	50.9	20.9	43.3	47.0
Switzerland	329.7	423.1	28.3	440.5	504.6	14.6	-110.8	-81.5

¹ Partner country:

- In case of exports (or dispatches) is the country (or Member State) of final destination of the goods.
- In case of imports (or arrivals) is the country (or Member State) of consignment of the goods.

² Data are preliminary as of February 10, 2022.

³ CIS includes: Azerbaijan; Armenia; Belarus; Kazakhstan; Kyrgyzstan; Moldova, Republic of; Russian Federation; Tajikistan; Turkmenistan; Uzbekistan.

⁴ OECD includes: Australia; Virgin Islands (US); United States; Iceland; Canada; Mexico; New Zealand; Norway; Korea, Republic of; Turkey; United Kingdom; Switzerland; Japan; Israel and Chile.

⁵ The United Kingdom includes: Northern Ireland; Great Britain; Channel Islands and Isle of Man.

⁶ EFTA includes: Norway; Switzerland; Iceland and Liechtenstein.

Table 3

**Exports, imports and trade balance by groups of countries and main partner countries¹
of Bulgaria in the period
January - November 2020 and 2021²**

(Continued and end)

Countries and groups of countries	Exports - FOB			Imports - CIF			Trade balance - FOB/CIF	
	2020	2021	Change compared to the same period of the previous year - %	2020	2021	Change compared to the same period of the previous year - %	2020	2021
	Million BGN			Million BGN			Million BGN	
Countries not included in the upper groups								
Albania	158.4	207.0	30.7	68.1	65.7	-3.5	90.3	141.3
Bosnia and Herzegovina	145.2	168.1	15.8	38.3	51.3	33.9	106.9	116.8
Brazil	79.2	59.7	-24.6	196.5	349.0	77.6	-117.3	-289.3
China	1594.2	1957.2	22.8	2784.0	3763.3	35.2	-1189.8	-1806.1
Egypt	306.1	414.4	35.4	629.8	491.5	-22.0	-323.7	-77.1
Georgia	238.6	348.4	46.0	777.6	653.3	-16.0	-539.0	-304.9
India	202.7	214.4	5.8	261.3	363.7	39.2	-58.6	-149.3
Indonesia	66.4	120.3	81.2	229.8	53.6	-76.7	-163.4	66.7
Iran, Islamic Republic of	176.8	152.4	-13.8	36.4	107.3	194.8	140.4	45.1
Peru	13.7	8.1	-40.9	537.9	572.8	6.5	-524.2	-564.7
Republic of North Macedonia	784.6	1002.0	27.7	537.0	670.8	24.9	247.6	331.2
Serbia	888.7	1292.2	45.4	1091.5	1331.1	22.0	-202.8	-38.9
Singapore	37.6	53.0	41.0	61.3	74.1	20.9	-23.7	-21.1
South Africa	198.7	136.9	-31.1	53.7	74.1	38.0	145.0	62.8
Syrian Arab Republic	5.2	7.8	50.0	0.7	3.8	442.9	4.5	4.0
Taiwan	75.2	59.9	-20.3	192.4	303.0	57.5	-117.2	-243.1
Tunisia	225.3	407.1	80.7	28.8	34.7	20.5	196.5	372.4
Ukraine	409.3	725.7	77.3	1039.6	1493.0	43.6	-630.3	-767.3
United Arab Emirates	127.0	139.5	9.8	51.5	65.6	27.4	75.5	73.9
Viet Nam	69.7	178.4	156.0	122.4	176.8	44.4	-52.7	1.6

¹ Partner country:

- In case of exports (or dispatches) is the country (or Member State) of final destination of the goods.
- In case of imports (or arrivals) is the country (or Member State) of consignment of the goods.

² Data are preliminary as of February 10, 2022.

Table 4

Exports, imports and trade balance of Bulgaria by sections of SITC, rev. 4
in the period
January - November 2020 and 2021¹

Sections by SITC	Exports - FOB			Imports - CIF			Trade balance - FOB/CIF	
	2020	2021	Change compared to the same period of the previous year - %	2020	2021	Change compared to the same period of the previous year - %	2020	2021
	Million BGN			Million BGN			Million BGN	
Total	50291.2	61985.0	23.3	54935.0	69359.6	26.3	-4643.8	-7374.6
of which: EU	33135.7	41391.1	24.9	33394.7	41837.4	25.3	-259.0	-446.3
Food and live animals	5857.5	7300.1	24.6	4700.5	5269.6	12.1	1157.0	2030.5
of which: EU	3711.9	4402.0	18.6	3654.8	4069.5	11.3	57.1	332.5
Beverages and tobacco	668.1	572.5	-14.3	1074.6	1157.7	7.7	-406.5	-585.2
of which: EU	471.4	397.3	-15.7	849.2	880.9	3.7	-377.8	-483.6
Crude materials, inedible (except fuel)	3606.1	4727.0	31.1	5793.3	6175.9	6.6	-2187.2	-1448.9
of which: EU	2220.6	2854.9	28.6	1159.3	1640.1	41.5	1061.3	1214.8
Mineral fuel, lubricants and related materials	2367.7	3595.9	51.9	4673.5	7642.2	63.5	-2305.8	-4046.3
of which: EU	922.9	1632.9	76.9	1356.6	2208.3	62.8	-433.7	-575.4
Animal and vegetable oils, fats and waxes	763.5	1234.7	61.7	281.8	469.7	66.7	481.7	765.0
of which: EU	408.9	871.6	113.2	122.8	325.1	164.7	286.1	546.5
Chemical and related products n.e.c.	5883.7	7130.9	21.2	8365.4	10664.4	27.5	-2481.7	-3533.5
of which: EU	3559.0	4678.1	31.4	6341.5	7942.2	25.2	-2782.5	-3264.1
Manufactured goods classified chiefly by material	11508.4	14442.6	25.5	9400.9	12067.4	28.4	2107.5	2375.2
of which: EU	7483.3	9690.2	29.5	5213.0	6285.5	20.6	2270.3	3404.7
Machinery and transport equipment	11938.8	14254.9	19.4	15441.1	19459.5	26.0	-3502.3	-5204.6
of which: EU	8991.9	10779.3	19.9	11115.9	14126.9	27.1	-2124.0	-3347.6
Miscellaneous manufactured articles	7497.0	8489.1	13.2	4776.8	5926.2	24.1	2720.2	2562.9
of which: EU	5223.1	5928.6	13.5	3200.2	3894.9	21.7	2022.9	2033.7
Commodities and transactions n.e.c.	200.4	237.3	18.4	427.1	527.0	23.4	-226.7	-289.7
of which: EU	142.7	156.2	9.5	381.4	464.0	21.7	-238.7	-307.8

¹ Data are preliminary as of February 10, 2022.