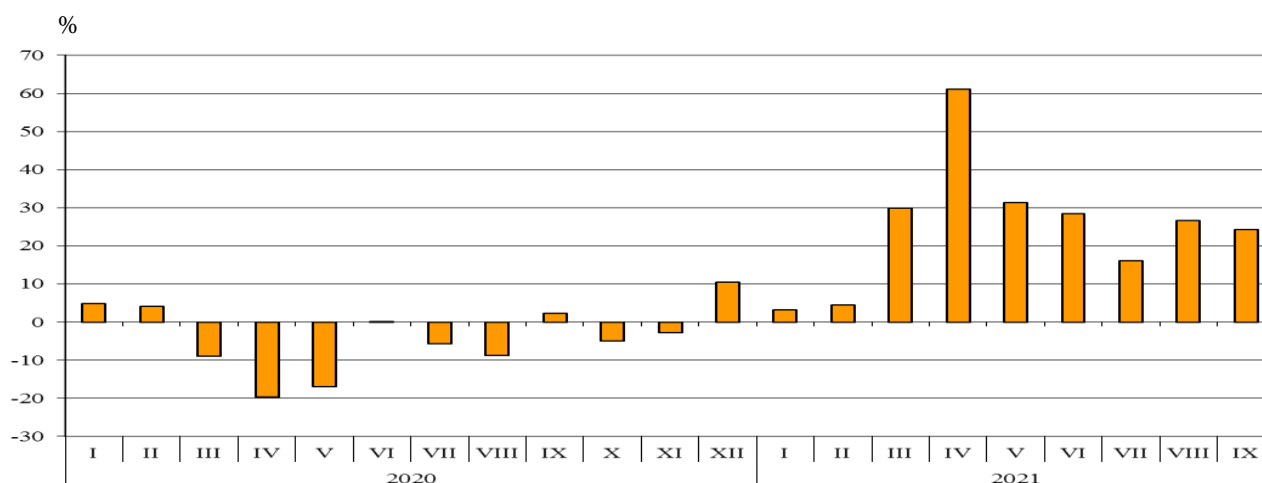


## TRADE IN GOODS OF BULGARIA WITH EU IN THE PERIOD JANUARY - SEPTEMBER 2021 (PRELIMINARY DATA)

In the period **January - September 2021**, the exports of goods from Bulgaria to the EU increased by 23.7% in comparison with the same period of 2020 and added up to 32 790.0 million BGN (Annex, Tables 1 and 2). Main trade partners of Bulgaria were Germany, Romania, Italy, Greece, France and Belgium which accounted for 69.4% of the exports to the EU Member States (Annex, Table 3).

In **September 2021**, the exports to the EU grew by 24.2% compared to the corresponding month of the previous year and amounted to 3 947.1 million BGN.

**Figure 1. Nominal value<sup>1</sup> change of exports of goods from Bulgaria to EU in the period 2020 - 2021  
(Compared to the same month of the previous year)**



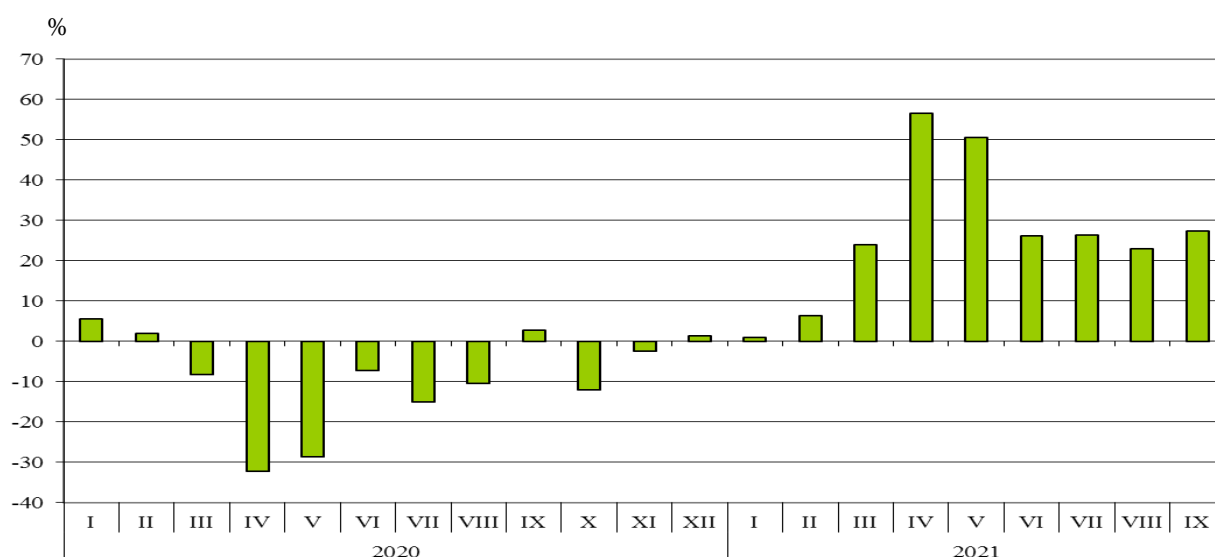
In the period **January - September 2021**, in the exports of goods from Bulgaria to the EU, distributed according to the **Standard International Trade Classification**, the most notable growth compared to the same period of 2020 was recorded in sections 'Animal and vegetable oils, fats and waxes' (128.6 %) and 'Mineral fuel, lubricants and related materials' (39.6%) (Annex, Table 4). Fall was reported only in the section 'Beverages and tobacco' (14.8%).

<sup>1</sup> Value changes at current prices.

**Imports of goods to Bulgaria from the EU in the period January - September 2021** increased by 25.3% in comparison with the same period of 2020 and added up to 33 199.8 million BGN (at CIF prices)<sup>1</sup> (Annex, Tables 1 and 2). The largest amounts were reported for the goods imported from Germany, Romania, Italy, Greece, the Netherlands and Hungary (Annex, Table 3).

In **September 2021**, the Bulgarian imports from the EU Member States grew by 27.4% compared to the corresponding month of the previous year and amounted to 4 166.4 million BGN.

**Figure 2. Nominal value<sup>2</sup> change of imports of goods to Bulgaria from EU in the period 2020 - 2021 (Compared to the same month of the previous year)**



In the period **January - September 2021**, in the imports of goods to Bulgaria from the EU Member States, distributed according to the **Standard International Trade Classification**, the largest growth compared to the corresponding period of 2020 was recorded in the section ‘Animal and vegetable oils, fats and waxes’ (131.5%). Fall was not observed in any of the sections.

The **foreign trade balance of Bulgaria (export FOB - import CIF) with the EU in the period January - September 2021** was negative and added up to 409.8 million BGN (Annex, Table 1).

<sup>1</sup> Imports at FOB prices are calculated by BNB ([http://bnb.bg/Statistics/StExternalSector/StForeignTrade/StFTImports/index.htm?toLang=\\_EN](http://bnb.bg/Statistics/StExternalSector/StForeignTrade/StFTImports/index.htm?toLang=_EN)).

<sup>2</sup> Value changes at current prices.

Annex

Table 1

**Exports, imports and trade balance of Bulgaria in the period  
January - September 2020 and 2021<sup>1</sup> by months**

(Million BGN)

Months/Periods	Exports - FOB			Imports - CIF <sup>2</sup>			Trade balance - FOB/CIF		
	Total	EU	Non EU	Total	EU	Non EU	Total	EU	Non EU
I.2020	4990.9	3207.9	1783.0	5299.0	3098.6	2200.4	-308.1	109.3	-417.4
II.2020	4849.6	3174.6	1675.0	5216.8	3227.4	1989.4	-367.2	-52.8	-314.4
III.2020	4506.0	2883.5	1622.5	5053.6	3223.8	1829.8	-547.6	-340.3	-207.3
<b>I - III.2020</b>	<b>14346.5</b>	<b>9266.0</b>	<b>5080.5</b>	<b>15569.4</b>	<b>9549.8</b>	<b>6019.6</b>	<b>-1222.9</b>	<b>-283.8</b>	<b>-939.1</b>
IV.2020	3890.5	2444.9	1445.6	3964.4	2299.7	1664.7	-73.9	145.2	-219.1
V.2020	3844.5	2558.3	1286.2	4084.8	2447.9	1636.9	-240.3	110.4	-350.7
VI.2020	4412.7	2959.7	1453.0	4842.2	2973.3	1868.9	-429.5	-13.6	-415.9
<b>IV - VI.2020</b>	<b>12147.7</b>	<b>7962.9</b>	<b>4184.8</b>	<b>12891.4</b>	<b>7720.9</b>	<b>5170.5</b>	<b>-743.7</b>	<b>242.0</b>	<b>-985.7</b>
<b>I - VI.2020</b>	<b>26494.2</b>	<b>17228.9</b>	<b>9265.3</b>	<b>28460.8</b>	<b>17270.7</b>	<b>11190.1</b>	<b>-1966.6</b>	<b>-41.8</b>	<b>-1924.8</b>
VII.2020	4865.8	3299.3	1566.5	5113.5	3125.4	1988.1	-247.7	173.9	-421.6
VIII.2020	4160.8	2795.2	1365.6	4602.3	2826.3	1776.0	-441.5	-31.1	-410.4
IX.2020	4885.8	3177.8	1708.0	5361.9	3270.5	2091.4	-476.1	-92.7	-383.4
<b>VII - IX.2020</b>	<b>13912.4</b>	<b>9272.3</b>	<b>4640.1</b>	<b>15077.7</b>	<b>9222.2</b>	<b>5855.5</b>	<b>-1165.3</b>	<b>50.1</b>	<b>-1215.4</b>
<b>I - IX.2020</b>	<b>40406.6</b>	<b>26501.2</b>	<b>13905.4</b>	<b>43538.5</b>	<b>26492.9</b>	<b>17045.6</b>	<b>-3131.9</b>	<b>8.3</b>	<b>-3140.2</b>
I.2021	4761.0	3310.9	1450.1	5051.1	3130.4	1920.7	-290.1	180.5	-470.6
II.2021	5061.9	3319.2	1742.7	5434.6	3435.8	1998.8	-372.7	-116.6	-256.1
III.2021	5821.7	3747.0	2074.7	6689.8	3998.6	2691.2	-868.1	-251.6	-616.5
<b>I - III.2021</b>	<b>15644.6</b>	<b>10377.1</b>	<b>5267.5</b>	<b>17175.5</b>	<b>10564.8</b>	<b>6610.7</b>	<b>-1530.9</b>	<b>-187.7</b>	<b>-1343.2</b>
IV.2021	5891.6	3937.9	1953.7	6080.7	3602.0	2478.7	-189.1	335.9	-525.0
V.2021	5148.6	3359.7	1788.9	6043.0	3686.3	2356.7	-894.4	-326.6	-567.8
VI.2021	5701.3	3799.1	1902.2	6440.6	3752.4	2688.2	-739.3	46.7	-786.0
<b>IV - VI.2021</b>	<b>16741.5</b>	<b>11096.7</b>	<b>5644.8</b>	<b>18564.3</b>	<b>11040.7</b>	<b>7523.6</b>	<b>-1822.8</b>	<b>56.0</b>	<b>-1878.8</b>
<b>I - VI.2021</b>	<b>32386.1</b>	<b>21473.8</b>	<b>10912.3</b>	<b>35739.8</b>	<b>21605.5</b>	<b>14134.3</b>	<b>-3353.7</b>	<b>-131.7</b>	<b>-3222.0</b>
VII.2021	5814.3	3831.5	1982.8	6354.8	3951.4	2403.4	-540.5	-119.9	-420.6
VIII.2021	5541.1	3537.6	2003.5	6254.3	3476.5	2777.8	-713.2	61.1	-774.3
IX.2021	5988.9	3947.1	2041.8	6603.6	4166.4	2437.2	-614.7	-219.3	-395.4
<b>VII - IX.2021</b>	<b>17344.3</b>	<b>11316.2</b>	<b>6028.1</b>	<b>19212.7</b>	<b>11594.3</b>	<b>7618.4</b>	<b>-1868.4</b>	<b>-278.1</b>	<b>-1590.3</b>
<b>I - IX.2021</b>	<b>49730.4</b>	<b>32790.0</b>	<b>16940.4</b>	<b>54952.5</b>	<b>33199.8</b>	<b>21752.7</b>	<b>-5222.1</b>	<b>-409.8</b>	<b>-4812.3</b>

<sup>1</sup> Data are preliminary as of 13-th December 2021.

<sup>2</sup> Imports at FOB prices are calculated by BNB

([http://bnb.bg/Statistics/StExternalSector/StForeignTrade/StFTImports/index.htm?toLang=\\_EN&toLang=\\_EN](http://bnb.bg/Statistics/StExternalSector/StForeignTrade/StFTImports/index.htm?toLang=_EN&toLang=_EN)).

**Table 2**

**Value changes of exports and imports of Bulgaria in the period  
January - September 2021<sup>1</sup> compared to the same period of the  
previous year**

(Per cent)

Months/Periods	Exports - FOB			Imports - CIF		
	Total	EU	Non EU	Total	EU	Non EU
I	-4.6	3.2	-18.7	-4.7	1.0	-12.7
II	4.4	4.6	4.0	4.2	6.5	0.5
III	29.2	29.9	27.9	32.4	24.0	47.1
<b>I - III</b>	<b>9.0</b>	<b>12.0</b>	<b>3.7</b>	<b>10.3</b>	<b>10.6</b>	<b>9.8</b>
IV	51.4	61.1	35.1	53.4	56.6	48.9
V	33.9	31.3	39.1	47.9	50.6	44.0
VI	29.2	28.4	30.9	33.0	26.2	43.8
<b>IV - VI</b>	<b>37.8</b>	<b>39.4</b>	<b>34.9</b>	<b>44.0</b>	<b>43.0</b>	<b>45.5</b>
<b>I - VI</b>	<b>22.2</b>	<b>24.6</b>	<b>17.8</b>	<b>25.6</b>	<b>25.1</b>	<b>26.3</b>
VII	19.5	16.1	26.6	24.3	26.4	20.9
VIII	33.2	26.6	46.7	35.9	23.0	56.4
IX	22.6	24.2	19.5	23.2	27.4	16.5
<b>VII - IX</b>	<b>24.7</b>	<b>22.0</b>	<b>29.9</b>	<b>27.4</b>	<b>25.7</b>	<b>30.1</b>
<b>I - IX</b>	<b>23.1</b>	<b>23.7</b>	<b>21.8</b>	<b>26.2</b>	<b>25.3</b>	<b>27.6</b>

<sup>1</sup> Data are preliminary as of 13-th December 2021.

**Table 3**  
**Exports, imports and trade balance by groups of countries and main partner countries<sup>1</sup>**  
**of Bulgaria in the period**  
**January - September 2020 and 2021<sup>2</sup>**

Countries and groups of countries	Exports - FOB			Imports - CIF			Trade balance - FOB/CIF	
	2020	2021	Change compared to the same period of the previous year - %	2020	2021	Change compared to the same period of the previous year - %	2020	2021
	Million BGN			Million BGN			Million BGN	
<b>Total</b>	<b>40406.6</b>	<b>49730.4</b>	<b>23.1</b>	<b>43538.5</b>	<b>54952.5</b>	<b>26.2</b>	<b>-3131.9</b>	<b>-5222.1</b>
<b>EU</b>	<b>26501.2</b>	<b>32790.0</b>	<b>23.7</b>	<b>26492.9</b>	<b>33199.8</b>	<b>25.3</b>	<b>8.3</b>	<b>-409.8</b>
Austria	780.6	1095.0	40.3	1189.0	1431.2	20.4	-408.4	-336.2
Belgium	1372.3	1402.8	2.2	788.4	1054.5	33.8	583.9	348.3
Croatia	226.7	488.7	115.6	226.3	305.9	35.2	0.4	182.8
Cyprus	158.6	204.8	29.1	72.6	130.0	79.1	86.0	74.8
Czechia	898.6	1077.0	19.9	1088.0	1397.5	28.4	-189.4	-320.5
Denmark	287.6	422.9	47.0	216.2	252.3	16.7	71.4	170.6
Estonia	30.7	47.2	53.7	37.7	69.8	85.1	-7.0	-22.6
Finland	95.0	106.9	12.5	117.9	118.8	0.8	-22.9	-11.9
France	1573.3	1804.7	14.7	1273.2	1481.5	16.4	300.1	323.2
Germany	6594.8	7736.7	17.3	5267.6	6877.5	30.6	1327.2	859.2
Greece	2684.6	3196.9	19.1	2246.5	2786.1	24.0	438.1	410.8
Hungary	682.5	924.9	35.5	1648.4	2063.3	25.2	-965.9	-1138.4
Ireland	109.5	94.8	-13.4	267.5	373.7	39.7	-158.0	-278.9
Italy	2729.8	3661.6	34.1	3104.9	3611.4	16.3	-375.1	50.2
Latvia	62.4	57.4	-8.0	35.2	43.9	24.7	27.2	13.5
Lithuania	114.1	121.5	6.5	102.1	128.2	25.6	12.0	-6.7
Luxembourg	21.0	42.3	101.4	55.0	77.6	41.1	-34.0	-35.3
Malta	36.6	33.0	-9.8	48.6	19.7	-59.5	-12.0	13.3
Netherlands	1122.8	1225.7	9.2	1766.5	2247.4	27.2	-643.7	-1021.7
Poland	972.8	1255.2	29.0	1597.5	1972.3	23.5	-624.7	-717.1
Portugal	157.5	171.7	9.0	90.3	157.1	74.0	67.2	14.6
Romania	3671.8	4956.9	35.0	3190.2	3989.4	25.1	481.6	967.5
Slovakia	395.0	405.8	2.7	609.6	711.3	16.7	-214.6	-305.5
Slovenia	266.9	297.4	11.4	325.1	411.9	26.7	-58.2	-114.5
Spain	946.8	1364.9	44.2	820.9	1075.1	31.0	125.9	289.8
Sweden	356.5	396.8	11.3	270.9	331.5	22.4	85.6	65.3
Not specified	152.4	196.5	28.9	36.8	80.9	119.8	115.6	115.6

<sup>1</sup> Partner country:

- In case of exports (or dispatches) is the country (or Member State) of final destination of the goods.
- In case of imports (or arrivals) is the country (or Member State) of consignment of the goods.

<sup>2</sup> Data are preliminary as of 13-th December 2021.

Table 3

**Exports, imports and trade balance by groups of countries and main partner countries<sup>1</sup>  
of Bulgaria in the period  
January - September 2020 and 2021<sup>2</sup>**

(Continued)

Countries and groups of countries	Exports - FOB			Imports - CIF			Trade balance - FOB/CIF	
	2020	2021	Change compared to the same period of the previous year - %	2020	2021	Change compared to the same period of the previous year - %	2020	2021
	Million BGN			Million BGN			Million BGN	
<b>Non EU countries</b>	<b>13905.4</b>	<b>16940.4</b>	<b>21.8</b>	<b>17045.6</b>	<b>21752.7</b>	<b>27.6</b>	<b>-3140.2</b>	<b>-4812.3</b>
<b>CIS<sup>3</sup></b>	<b>943.2</b>	<b>924.6</b>	<b>-2.0</b>	<b>2823.1</b>	<b>4343.3</b>	<b>53.8</b>	<b>-1879.9</b>	<b>-3418.7</b>
of which:								
Kazakhstan	50.2	40.9	-18.5	19.0	3.5	-81.6	31.2	37.4
Russian Federation	615.8	600.9	-2.4	2676.4	4094.0	53.0	-2060.6	-3493.1
<b>OECD<sup>4</sup></b>	<b>5306.7</b>	<b>6627.8</b>	<b>24.9</b>	<b>5622.9</b>	<b>7158.3</b>	<b>27.3</b>	<b>-316.2</b>	<b>-530.5</b>
of which:								
Canada	187.2	92.6	-50.5	234.0	223.7	-4.4	-46.8	-131.1
Israel	162.5	305.1	87.8	67.9	308.8	354.8	94.6	-3.7
Japan	75.1	77.8	3.6	207.4	284.5	37.2	-132.3	-206.7
Korea, Republic of	110.9	323.8	192.0	190.7	203.5	6.7	-79.8	120.3
Turkey	2531.1	3173.4	25.4	2974.8	4095.1	37.7	-443.7	-921.7
United Kingdom <sup>5</sup>	939.1	907.1	-3.4	524.9	435.3	-17.1	414.2	471.8
United States	789.9	1103.9	39.8	566.3	405.6	-28.4	223.6	698.3
<b>EFTA<sup>6</sup></b>	<b>340.1</b>	<b>425.2</b>	<b>25.0</b>	<b>397.3</b>	<b>452.9</b>	<b>14.0</b>	<b>-57.2</b>	<b>-27.7</b>
of which:								
Norway	69.3	80.1	15.6	36.9	42.9	16.3	32.4	37.2
Switzerland	269.2	342.0	27.0	354.9	405.5	14.3	-85.7	-63.5

<sup>1</sup> Partner country:

- In case of exports (or dispatches) is the country (or Member State) of final destination of the goods.

- In case of imports (or arrivals) is the country (or Member State) of consignment of the goods.

<sup>2</sup> Data are preliminary as of 13-th December 2021.

<sup>3</sup> CIS includes: Azerbaijan; Armenia; Belarus; Kazakhstan; Kyrgyzstan; Moldova, Republic of; Russian Federation; Tajikistan; Turkmenistan; Uzbekistan.

<sup>4</sup> OECD includes: Australia; Virgin Islands (US); United States; Iceland; Canada; Mexico; New Zealand; Norway; Korea, Republic of; Turkey; United Kingdom; Switzerland; Japan; Israel and Chile.

<sup>5</sup> The United Kingdom includes: Northern Ireland; Great Britain; Channel Islands and Isle of Man.

<sup>6</sup> EFTA includes: Norway; Switzerland; Iceland and Liechtenstein.

Table 3

**Exports, imports and trade balance by groups of countries and main partner countries<sup>1</sup>  
of Bulgaria in the period  
January - September 2020 and 2021<sup>2</sup>**

(Continued and end)

Countries and groups of countries	Exports - FOB			Imports - CIF			Trade balance - FOB/CIF	
	2020	2021	Change compared to the same period of the previous year - %	2020	2021	Change compared to the same period of the previous year - %	2020	2021
	Million BGN			Million BGN			Million BGN	
<b>Countries not included in the upper groups</b>								
Albania	128.0	162.9	27.3	43.6	54.0	23.9	84.4	108.9
Bosnia and Herzegovina	120.1	135.9	13.2	32.5	41.6	28.0	87.6	94.3
Brazil	70.6	53.0	-24.9	110.4	227.7	106.3	-39.8	-174.7
China	1349.1	1650.5	22.3	2258.7	3007.2	33.1	-909.6	-1356.7
Egypt	251.2	372.4	48.2	562.2	433.8	-22.8	-311.0	-61.4
Georgia	191.5	286.0	49.3	706.8	465.6	-34.1	-515.3	-179.6
India	167.1	178.6	6.9	213.0	286.4	34.5	-45.9	-107.8
Indonesia	59.9	114.5	91.2	174.8	45.3	-74.1	-114.9	69.2
Iran, Islamic Republic of	159.7	128.8	-19.3	28.4	75.3	165.1	131.3	53.5
Peru	12.2	6.7	-45.1	448.9	438.9	-2.2	-436.7	-432.2
Republic of North Macedonia	660.8	773.0	17.0	416.8	536.1	28.6	244.0	236.9
Serbia	709.9	995.4	40.2	903.2	1057.2	17.1	-193.3	-61.8
Singapore	32.6	47.5	45.7	50.1	62.1	24.0	-17.5	-14.6
South Africa	165.4	124.5	-24.7	41.4	68.9	66.4	124.0	55.6
Syrian Arab Republic	4.2	7.8	85.7	0.4	3.8	850.0	3.8	4.0
Taiwan	60.5	49.4	-18.3	153.0	239.9	56.8	-92.5	-190.5
Tunisia	181.2	379.6	109.5	22.5	29.7	32.0	158.7	349.9
Ukraine	322.4	608.6	88.8	748.9	1171.6	56.4	-426.5	-563.0
United Arab Emirates	103.2	116.2	12.6	34.2	52.9	54.7	69.0	63.3
Viet Nam	55.1	150.0	172.2	104.4	150.1	43.8	-49.3	-0.1

<sup>1</sup> Partner country:

- In case of exports (or dispatches) is the country (or Member State) of final destination of the goods.
- In case of imports (or arrivals) is the country (or Member State) of consignment of the goods.

<sup>2</sup> Data are preliminary as of 13-th December 2021.

Table 4

**Exports, imports and trade balance of Bulgaria by sections of SITC, rev. 4  
in the period  
January - September 2020 and 2021<sup>1</sup>**

Sections by SITC	Exports - FOB			Imports - CIF			Trade balance - FOB/CIF	
	2020	2021	Change compared to the same period of the previous year - %	2020	2021	Change compared to the same period of the previous year - %	2020	2021
	Million BGN			Million BGN			Million BGN	
<b>Total</b>	<b>40406.6</b>	<b>49730.4</b>	<b>23.1</b>	<b>43538.5</b>	<b>54952.5</b>	<b>26.2</b>	<b>-3131.9</b>	<b>-5222.1</b>
<b>of which: EU</b>	<b>26501.2</b>	<b>32790.0</b>	<b>23.7</b>	<b>26492.9</b>	<b>33199.8</b>	<b>25.3</b>	<b>8.3</b>	<b>-409.8</b>
Food and live animals	4734.8	5827.6	23.1	3762.4	4180.3	11.1	972.4	1647.3
of which: EU	2956.9	3494.1	18.2	2919.0	3218.4	10.3	37.9	275.7
Beverages and tobacco	553.7	468.9	-15.3	866.3	935.8	8.0	-312.6	-466.9
of which: EU	388.9	331.5	-14.8	682.4	709.1	3.9	-293.5	-377.6
Crude materials, inedible (except fuel)	2995.0	3887.6	29.8	4446.7	4824.6	8.5	-1451.7	-937.0
of which: EU	1835.0	2318.6	26.4	890.0	1210.5	36.0	945.0	1108.1
Mineral fuel, lubricants and related materials	2033.5	2811.2	38.2	3812.2	6114.8	60.4	-1778.7	-3303.6
of which: EU	797.1	1113.1	39.6	1138.9	1738.7	52.7	-341.8	-625.6
Animal and vegetable oils, fats and waxes	610.1	1040.3	70.5	200.9	346.3	72.4	409.2	694.0
of which: EU	303.5	693.9	128.6	95.5	221.1	131.5	208.0	472.8
Chemical and related products n.e.c.	4720.2	5616.6	19.0	6789.5	8556.8	26.0	-2069.3	-2940.2
of which: EU	2840.0	3627.7	27.7	5122.9	6459.1	26.1	-2282.9	-2831.4
Manufactured goods classified chiefly by material	9307.4	11559.1	24.2	7548.8	9445.1	25.1	1758.6	2114.0
of which: EU	6012.9	7606.1	26.5	4152.3	4975.0	19.8	1860.6	2631.1
Machinery and transport equipment	9408.5	11518.2	22.4	12055.9	15480.5	28.4	-2647.4	-3962.3
of which: EU	7069.5	8717.1	23.3	8718.0	11295.4	29.6	-1648.5	-2578.3
Miscellaneous manufactured articles	5885.0	6812.6	15.8	3722.2	4657.2	25.1	2162.8	2155.4
of which: EU	4185.5	4761.6	13.8	2475.0	3010.7	21.6	1710.5	1750.9
Commodities and transactions n.e.c.	158.4	188.3	18.9	333.6	411.1	23.2	-175.2	-222.8
of which: EU	111.9	126.3	12.9	298.9	361.8	21.0	-187.0	-235.5

<sup>1</sup> Data are preliminary as of 13-th December 2021.