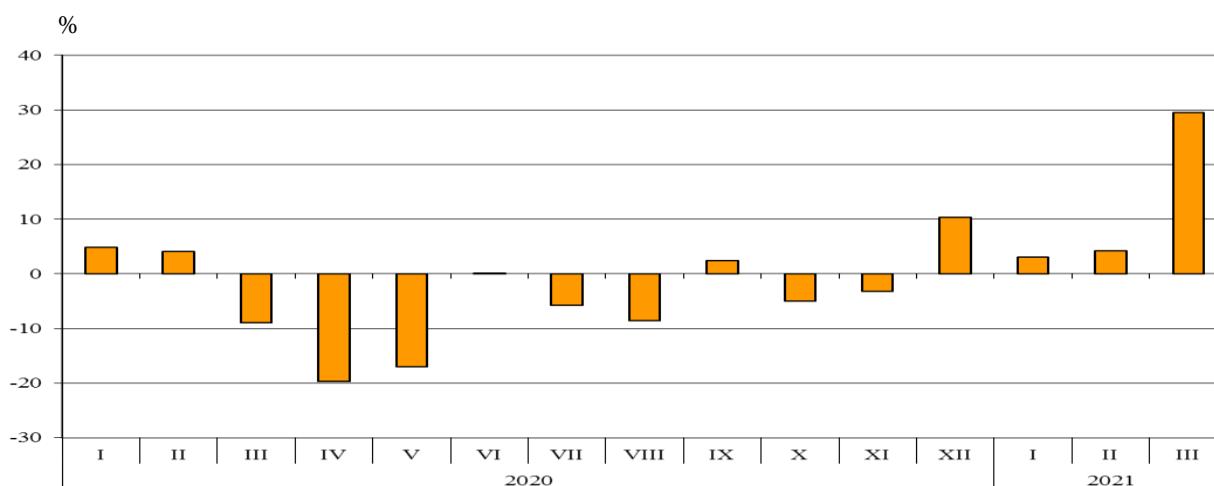


TRADE IN GOODS OF BULGARIA WITH EU IN THE PERIOD JANUARY - MARCH 2021 (PRELIMINARY DATA)

In the period **January - March 2021** the exports of goods from Bulgaria to the EU increased by 11.7% in comparison with the same period of 2020 and added up to 10 349.5 Million BGN (Annex, Tables 1 and 2). Main trade partners of Bulgaria were Germany, Romania, Italy, Greece, Belgium and France which accounted for 71.2% of the exports to the EU Member States (Annex, Table 3).

In **March 2021** the exports to the EU grew by 29.5% compared to the corresponding month of the previous year and amounted to 3 733.8 Million BGN.

**Figure 1. Nominal value¹ change of exports of goods from Bulgaria to EU in the period 2020 - 2021
(Compared to the same month of the previous year)**



In the period **January - March 2021** in the exports of goods from Bulgaria to the EU, distributed according to the **Standard International Trade Classification**, the most notable growth compared to the same period of 2020 was recorded in sections 'Animals and vegetable oils, fats and waxes' (63.6%) and 'Crude materials, inedible (except fuel)² (42.2%) (Annex, Table 4). The most notable fall was reported in section 'Mineral fuel, lubricants and related materials' (34.2%).

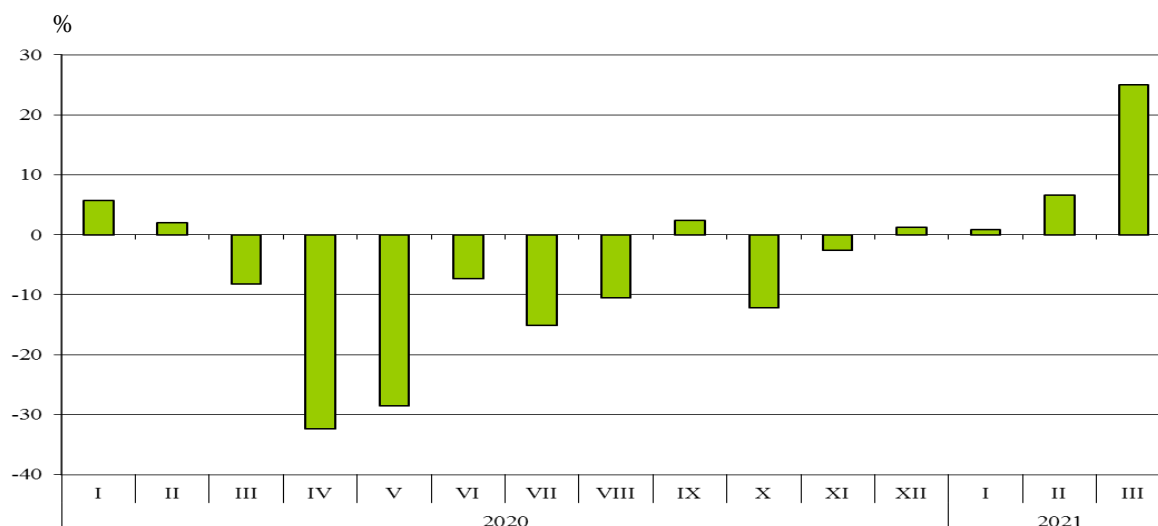
¹ Value changes at current prices.

² The section includes the following divisions: raw hides, skins and furskins; oil-seeds and oleaginous fruits; crude rubber; cork and wood; pulp and waste paper; textile fibres and their wastes; crude fertilizers and crude minerals; metalliferous ores and metal scrap; crude animal and vegetable materials, n.e.c.

Imports of goods to Bulgaria from the EU in the period **January - March 2021** increased by 11.0% in comparison with the same period of 2020 and added up to 10 600.1 Million BGN (at CIF prices)¹ (Annex, Tables 1 and 2). The largest amounts were reported for the goods imported from Germany, Romania, Italy, Greece, Hungary and the Netherlands (Annex, Table 3).

In **March 2021** the Bulgarian imports from the EU Member States grew by 25.1% compared to the corresponding month of the previous year and amounted to 4 033.7 Million BGN.

Figure 2. Nominal value² change of imports of goods to Bulgaria from EU in the period 2020 - 2021 (Compared to the same month of the previous year)



In the period **January - March 2021** in the imports of goods to Bulgaria from the EU Member States, distributed according to the **Standard International Trade Classification**, the largest growth compared to the corresponding period of 2020 was recorded in the section ‘Animals and vegetable oils, fats and waxes’ (51.1%). Fall was observed only in the section ‘Beverages and tobacco’ (8.9%).

The **foreign trade balance** of Bulgaria (export FOB - import CIF) **with the EU** in the period **January - March 2021** was negative and added up to 250.6 Million BGN (Annex, Table 1).

¹ Imports at FOB prices are calculated by BNB (<http://bnb.bg/Statistics/StExternalSector/StForeignTrade/StFTImports/index.htm?toLang= EN>).

² Value changes at current prices.

Annex

Table 1

Exports, imports and trade balance of Bulgaria in the period January - March 2020¹ and 2021¹ by months

(Million BGN)

Months/Periods	Exports - FOB			Imports - CIF ²			Trade balance - FOB/CIF		
	Total	EU	Non EU	Total	EU	Non EU	Total	EU	Non EU
I.2020	4989.4	3209.3	1780.1	5302.3	3100.0	2202.3	-312.9	109.3	-422.2
II.2020	4847.8	3176.1	1671.7	5276.4	3228.3	2048.1	-428.6	-52.2	-376.4
III.2020	4505.9	2884.1	1621.8	5053.6	3225.3	1828.3	-547.7	-341.2	-206.5
I - III.2020	14343.1	9269.5	5073.6	15632.3	9553.6	6078.7	-1289.2	-284.1	-1005.1
I.2021	4746.0	3306.9	1439.1	5019.4	3125.2	1894.2	-273.4	181.7	-455.1
II.2021	5016.2	3308.8	1707.4	5425.6	3441.2	1984.4	-409.4	-132.4	-277.0
III.2021	5743.7	3733.8	2009.9	6677.6	4033.7	2643.9	-933.9	-299.9	-634.0
I - III.2021	15505.9	10349.5	5156.4	17122.6	10600.1	6522.5	-1616.7	-250.6	-1366.1

¹ Data are preliminary as of 11-th June 2021.

² Imports at FOB prices are calculated by BNB

http://bnb.bg/Statistics/StExternalSector/StForeignTrade/StFTImports/index.htm?toLang=_EN&toLang=_EN.

Table 2

Value changes of exports and imports of Bulgaria in the period January - March 2021¹ compared to the same period of the previous year

(Per cent)

Months/Periods	Exports - FOB			Imports - CIF		
	Total	EU	Non EU	Total	EU	Non EU
I	-4.9	3.0	-19.2	-5.3	0.8	-14.0
II	3.5	4.2	2.1	2.8	6.6	-3.1
III	27.5	29.5	23.9	32.1	25.1	44.6
I - III	8.1	11.7	1.6	9.5	11.0	7.3

¹ Data are preliminary as of 11-th June 2021.

Table 3

**Exports, imports and trade balance by groups of countries and main partner countries¹
of Bulgaria in the period
January - March 2020² and 2021²**

Countries and groups of countries	Exports - FOB			Imports - CIF			Trade balance - FOB/CIF	
	2020	2021	Change compared to the same period of the previous year - %	2020	2021	Change compared to the same period of the previous year - %	2020	2021
	Million BGN			Million BGN			Million BGN	
Total	14343.1	15505.9	8.1	15632.3	17122.6	9.5	-1289.2	-1616.7
EU	9269.5	10349.5	11.7	9553.6	10600.1	11.0	-284.1	-250.6
Austria	281.9	312.2	10.7	413.6	444.0	7.4	-131.7	-131.8
Belgium	613.1	761.5	24.2	269.5	361.5	34.1	343.6	400.0
Croatia	68.4	171.4	150.6	52.7	207.7	294.1	15.7	-36.3
Cyprus	61.7	59.3	-3.9	11.3	14.4	27.4	50.4	44.9
Czechia	324.2	362.7	11.9	408.1	491.9	20.5	-83.9	-129.2
Denmark	85.5	111.8	30.8	75.7	79.0	4.4	9.8	32.8
Estonia	11.0	13.3	20.9	14.3	21.0	46.9	-3.3	-7.7
Finland	33.5	38.5	14.9	35.4	33.9	-4.2	-1.9	4.6
France	542.2	572.3	5.6	464.1	508.6	9.6	78.1	63.7
Germany	2217.6	2540.9	14.6	1911.0	2113.9	10.6	306.6	427.0
Greece	948.8	972.9	2.5	831.3	743.1	-10.6	117.5	229.8
Hungary	247.1	256.3	3.7	634.9	729.4	14.9	-387.8	-473.1
Ireland	41.0	28.3	-31.0	92.9	152.4	64.0	-51.9	-124.1
Italy	977.7	1182.8	21.0	1042.0	1139.4	9.3	-64.3	43.4
Latvia	17.6	16.8	-4.5	10.0	14.8	48.0	7.6	2.0
Lithuania	36.8	38.8	5.4	34.8	39.3	12.9	2.0	-0.5
Luxembourg	8.6	16.2	88.4	18.7	27.4	46.5	-10.1	-11.2
Malta	12.8	12.0	-6.3	14.5	5.0	-65.5	-1.7	7.0
Netherlands	346.5	355.3	2.5	628.9	723.6	15.1	-282.4	-368.3
Poland	354.2	396.2	11.9	556.6	639.8	14.9	-202.4	-243.6
Portugal	45.1	57.7	27.9	32.0	43.7	36.6	13.1	14.0
Romania	1211.7	1335.0	10.2	1252.6	1230.5	-1.8	-40.9	104.5
Slovakia	151.8	124.1	-18.2	223.7	252.1	12.7	-71.9	-128.0
Slovenia	85.1	79.2	-6.9	119.0	131.0	10.1	-33.9	-51.8
Spain	348.3	361.2	3.7	278.3	314.2	12.9	70.0	47.0
Sweden	130.3	124.9	-4.1	108.2	106.6	-1.5	22.1	18.3
Not specified	67.0	47.9	-28.5	19.5	31.9	63.6	47.5	16.0

¹ Partner country:

- In case of exports (or dispatches) is the country (or Member State) of final destination of the goods.

- In case of imports (or arrivals) is the country (or Member State) of consignment of the goods.

² Data are preliminary as of 11-th June 2021.

Table 3

**Exports, imports and trade balance by groups of countries and main partner countries¹
of Bulgaria in the period
January - March 2020² and 2021²**

(Continued)

Countries and groups of countries	Exports - FOB			Imports - CIF			Trade balance - FOB/CIF	
	2020	2021	Change compared to the same period of the previous year - %	2020	2021	Change compared to the same period of the previous year - %	2020	2021
	Million BGN			Million BGN			Million BGN	
Non EU countries	5073.6	5156.4	1.6	6078.7	6522.5	7.3	-1005.1	-1366.1
CIS³	319.2	273.0	-14.5	1338.9	1211.6	-9.5	-1019.7	-938.6
of which:								
Kazakhstan	17.1	12.9	-24.6	7.8	2.2	-71.8	9.3	10.7
Russian Federation	206.4	180.2	-12.7	1276.7	1116.0	-12.6	-1070.3	-935.8
OECD⁴	1946.1	2034.7	4.6	1849.9	2303.7	24.5	96.2	-269.0
of which:								
Canada	79.2	28.2	-64.4	65.1	62.3	-4.3	14.1	-34.1
Israel	39.2	65.7	67.6	28.9	140.0	384.4	10.3	-74.3
Japan	26.8	24.4	-9.0	77.0	112.7	46.4	-50.2	-88.3
Korea, Republic of	25.2	30.5	21.0	64.5	60.0	-7.0	-39.3	-29.5
Turkey	959.9	1057.5	10.2	996.5	1230.0	23.4	-36.6	-172.5
United Kingdom ⁵	332.2	276.6	-16.7	193.2	128.8	-33.3	139.0	147.8
United States	293.1	324.6	10.7	167.9	111.5	-33.6	125.2	213.1
EFTA⁶	118.2	143.2	21.2	144.1	147.1	2.1	-25.9	-3.9
of which:								
Norway	30.9	29.7	-3.9	16.5	17.5	6.1	14.4	12.2
Switzerland	86.7	112.2	29.4	123.6	126.3	2.2	-36.9	-14.1

¹ Partner country:

- In case of exports (or dispatches) is the country (or Member State) of final destination of the goods.
- In case of imports (or arrivals) is the country (or Member State) of consignment of the goods.

² Data are preliminary as of 11-th June 2021.

³ CIS includes: Azerbaijan; Armenia; Belarus; Kazakhstan; Kyrgyzstan; Moldova, Republic of; Russian Federation; Tajikistan; Turkmenistan; Uzbekistan.

⁴ OECD includes: Australia; Virgin Islands (US); United States; Iceland; Canada; Mexico; New Zealand; Norway; Korea, Republic of; Turkey; United Kingdom; Switzerland; Japan; Israel and Chile.

⁵ The United Kingdom includes: Northern Ireland; Great Britain; Channel Islands and Isle of Man.

⁶ EFTA includes: Norway; Switzerland; Iceland and Liechtenstein.

Table 3

**Exports, imports and trade balance by groups of countries and main partner countries¹
of Bulgaria in the period
January - March 2020² and 2021²**

(Continued and end)

Countries and groups of countries	Exports - FOB			Imports - CIF			Trade balance - FOB/CIF	
	2020	2021	Change compared to the same period of the previous year - %	2020	2021	Change compared to the same period of the previous year - %	2020	2021
	Million BGN			Million BGN			Million BGN	
Countries not included in the upper groups								
Albania	38.0	44.1	16.1	12.1	16.2	33.9	25.9	27.9
Bosnia and Herzegovina	42.5	42.1	-0.9	13.8	12.0	-13.0	28.7	30.1
Brazil	13.7	19.2	40.1	15.3	85.1	456.2	-1.6	-65.9
China	390.3	536.6	37.5	751.3	925.2	23.1	-361.0	-388.6
Egypt	123.6	96.4	-22.0	317.8	59.4	-81.3	-194.2	37.0
Georgia	70.0	60.3	-13.9	202.7	198.3	-2.2	-132.7	-138.0
India	54.9	54.7	-0.4	76.0	80.5	5.9	-21.1	-25.8
Indonesia	22.4	8.4	-62.5	18.6	16.2	-12.9	3.8	-7.8
Iran, Islamic Republic of	72.4	41.7	-42.4	13.2	14.1	6.8	59.2	27.6
Peru	6.0	1.8	-70.0	195.5	183.9	-5.9	-189.5	-182.1
Republic of North Macedonia	198.1	217.0	9.5	141.2	135.1	-4.3	56.9	81.9
Serbia	247.2	275.7	11.5	309.2	320.9	3.8	-62.0	-45.2
Singapore	21.0	8.2	-61.0	22.1	20.5	-7.2	-1.1	-12.3
South Africa	70.6	17.5	-75.2	15.5	9.7	-37.4	55.1	7.8
Syrian Arab Republic	2.9	2.6	-10.3	0.1	0.6	500.0	2.8	2.0
Taiwan	19.6	15.2	-22.4	52.9	76.3	44.2	-33.3	-61.1
Tunisia	106.6	121.9	14.4	9.5	7.0	-26.3	97.1	114.9
Ukraine	107.1	123.5	15.3	283.3	314.1	10.9	-176.2	-190.6
United Arab Emirates	39.4	42.0	6.6	14.4	20.0	38.9	25.0	22.0
Viet Nam	18.6	24.8	33.3	32.1	40.8	27.1	-13.5	-16.0

¹ Partner country:

- In case of exports (or dispatches) is the country (or Member State) of final destination of the goods.
- In case of imports (or arrivals) is the country (or Member State) of consignment of the goods.

² Data are preliminary as of 11-th June 2021.

Table 4

**Exports, imports and trade balance of Bulgaria by sections of SITC, rev. 4
in the period
January - March 2020¹ and 2021¹**

Sections by SITC	Exports - FOB			Imports - CIF			Trade balance - FOB/CIF	
	2020	2021	Change compared to the same period of the previous year - %	2020	2021	Change compared to the same period of the previous year - %	2020	2021
	Million BGN			Million BGN			Million BGN	
Total	14343.1	15505.9	8.1	15632.3	17122.6	9.5	-1289.2	-1616.7
of which: EU	9269.5	10349.5	11.7	9553.6	10600.1	11.0	-284.1	-250.6
Food and live animals	1697.3	1627.4	-4.1	1366.3	1390.2	1.7	331.0	237.2
of which: EU	989.5	921.9	-6.8	1075.3	1078.7	0.3	-85.8	-156.8
Beverages and tobacco	188.5	169.0	-10.3	276.5	249.8	-9.7	-88.0	-80.8
of which: EU	118.4	118.3	-0.1	216.8	197.5	-8.9	-98.4	-79.2
Crude materials, inedible (except fuel)	971.5	1308.0	34.6	1459.1	1695.3	16.2	-487.6	-387.3
of which: EU	547.2	778.1	42.2	360.9	407.6	12.9	186.3	370.5
Mineral fuel, lubricants and related materials	1010.1	647.4	-35.9	1772.9	1648.6	-7.0	-762.8	-1001.2
of which: EU	373.2	245.4	-34.2	443.3	483.3	9.0	-70.1	-237.9
Animals and vegetable oils, fats and waxes	243.3	272.3	11.9	62.7	92.1	46.9	180.6	180.2
of which: EU	115.2	188.5	63.6	31.5	47.6	51.1	83.7	140.9
Chemical and related products n.e.c.	1585.6	1716.5	8.3	2410.1	2763.6	14.7	-824.5	-1047.1
of which: EU	953.2	1064.1	11.6	1833.3	2128.1	16.1	-880.1	-1064.0
Manufactured goods classified chiefly by material	3083.3	3736.2	21.2	2646.5	2760.3	4.3	436.8	975.9
of which: EU	2084.2	2552.0	22.4	1498.4	1524.8	1.8	585.8	1027.2
Machinery and transport equipment	3352.2	3772.3	12.5	4179.3	4917.3	17.7	-827.1	-1145.0
of which: EU	2529.4	2862.0	13.1	3104.2	3633.5	17.1	-574.8	-771.5
Miscellaneous manufactured articles	2155.4	2193.0	1.7	1343.7	1466.0	9.1	811.7	727.0
of which: EU	1518.9	1574.2	3.6	885.5	977.7	10.4	633.4	596.5
Commodities and transactions n.e.c.	55.9	63.8	14.1	115.2	139.4	21.0	-59.3	-75.6
of which: EU	40.3	45.0	11.7	104.4	121.3	16.2	-64.1	-76.3

¹ Data are preliminary as of 11-th June 2021.