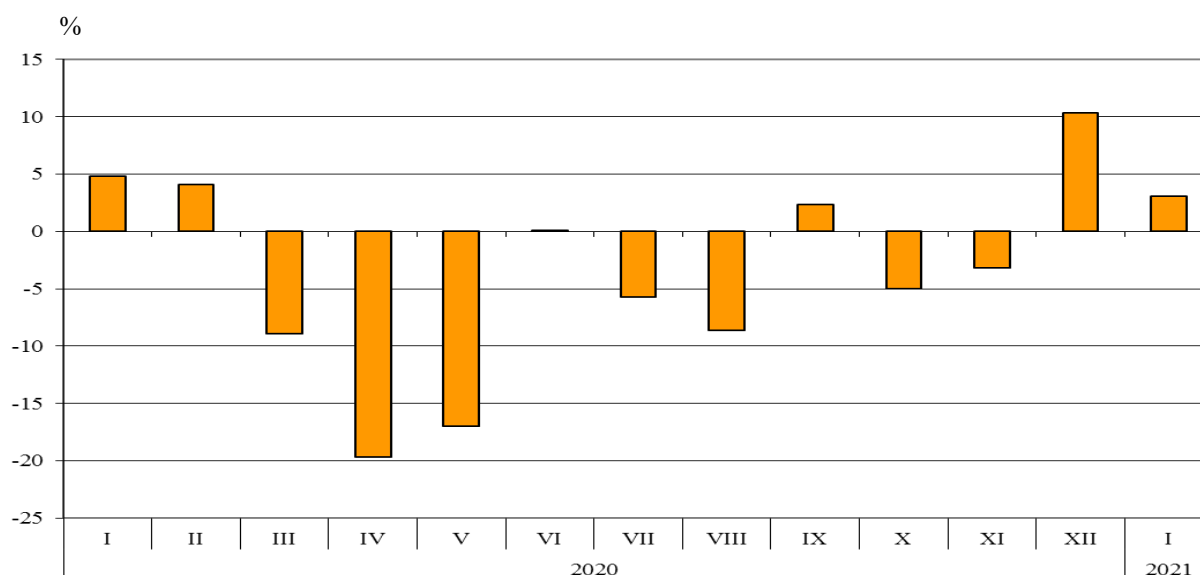


TRADE IN GOODS OF BULGARIA WITH EU IN JANUARY 2021 (PRELIMINARY DATA)

In **January 2021** the exports of goods from Bulgaria to the EU increased by 3.0% in comparison with the same month of 2020 and added up to 3 306.9 Million BGN (Annex, Tables 1 and 2). Main trade partners of Bulgaria were Germany, Italy, Romania, Greece, Belgium and France which accounted for 71.9% of the exports to the EU Member States (Annex, Table 3).

**Figure 1. Nominal value¹ change of exports of goods from Bulgaria to EU in the period 2020 - 2021
(Compared to the same month of the previous year)**



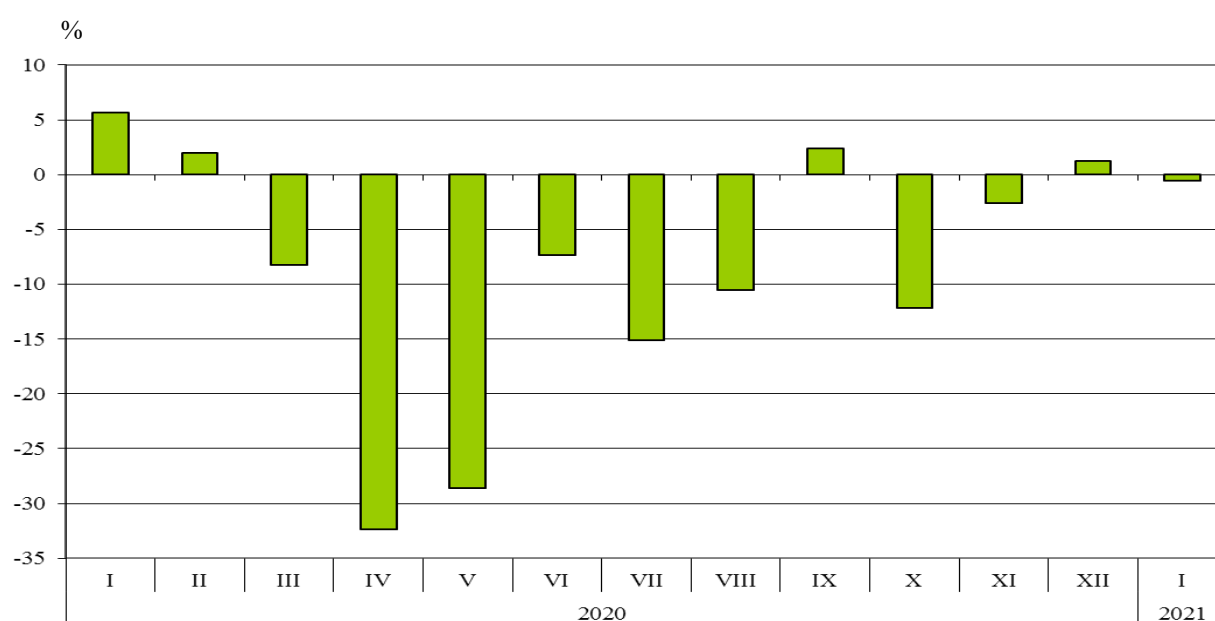
In **January 2021** in the exports of goods from Bulgaria to the EU, distributed according to the **Standard International Trade Classification**, the most notable growth compared to the same month of 2020 was recorded in sections ‘Animals and vegetable oils, fats and waxes’ (103.6%) and ‘Crude materials, inedible (except fuel)’² (24.5%) (Annex, Table 4). The most notable fall was reported in section ‘Mineral fuel, lubricants and related materials’ (41.5%).

¹ Value changes at current prices.

² The section includes the following divisions: raw hides, skins and furskins; oil-seeds and oleaginous fruits; crude rubber; cork and wood; pulp and waste paper; textile fibres and their wastes; crude fertilizers and crude minerals; metalliferous ores and metal scrap; crude animal and vegetable materials, n.e.c.

Imports of goods to Bulgaria from the EU in January 2021 decreased by 0.5% in comparison with the same month of 2020 and added up to 3 083.9 Million BGN (at CIF prices)¹ (Annex, Tables 1 and 2). The largest amounts were reported for the goods imported from Germany, Romania, Italy, Hungary, Greece and the Netherlands (Annex, Table 3).

Figure 2. Nominal value² change of imports of goods to Bulgaria from EU in the period 2020 - 2021 (Compared to the same month of the previous year)



In **January 2021** in the imports of goods to Bulgaria from the EU Member States, distributed according to the **Standard International Trade Classification**, the largest growth compared to the corresponding month of 2020 was recorded in the section 'Animals and vegetable oils, fats and waxes' (36.7%). The most notable fall was observed in the section 'Beverages and tobacco' (20.5%).

The **foreign trade balance** of Bulgaria (export FOB - import CIF) **with the EU in January 2021** was positive and added up to 223.0 Million BGN (Annex, Table 1).

¹ Imports at FOB prices are calculated by BNB (http://bnb.bg/Statistics/StExternalSector/StForeignTrade/StFTImports/index.htm?toLang=_EN).

² Value changes at current prices.

Annex

Table 1

Exports, imports and trade balance of Bulgaria in January 2020¹ and 2021¹ by months

(Million BGN)

Months/Periods	Exports - FOB			Imports - CIF ²			Trade balance - FOB/CIF		
	Total	EU	Non EU	Total	EU	Non EU	Total	EU	Non EU
I.2020	4989.4	3209.3	1780.1	5302.3	3100.0	2202.3	-312.9	109.3	-422.2
I.2021	4684.9	3306.9	1378.0	4957.2	3083.9	1873.3	-272.3	223.0	-495.3

¹ Data are preliminary as of 13-th April 2021.

² Imports at FOB prices are calculated by BNB

http://bnb.bg/Statistics/StExternalSector/StForeignTrade/StFTImports/index.htm?toLang=_EN&toLang=_EN.

Table 2

Value changes of exports and imports of Bulgaria in January 2021¹ compared to the same period of the previous year

(Per cent)

Months/Periods	Exports - FOB			Imports - CIF		
	Total	EU	Non EU	Total	EU	Non EU
I	-6.1	3.0	-22.6	-6.5	-0.5	-14.9

¹ Data are preliminary as of 13-th April 2021.

Table 3

Exports, imports and trade balance by groups of countries and main partner countries¹ of Bulgaria in January 2020² and 2021²

Countries and groups of countries	Exports - FOB			Imports - CIF			Trade balance - FOB/CIF	
	2020	2021	Change compared to the same period of the previous year - %	2020	2021	Change compared to the same period of the previous year - %	2020	2021
	Million BGN			Million BGN			Million BGN	
Total	4989.4	4684.9	-6.1	5302.3	4957.2	-6.5	-312.9	-272.3
EU	3209.3	3306.9	3.0	3100.0	3083.9	-0.5	109.3	223.0
Austria	106.5	93.6	-12.1	137.9	129.8	-5.9	-31.4	-36.2
Belgium	239.2	205.7	-14.0	90.0	138.2	53.6	149.2	67.5
Croatia	25.0	35.4	41.6	18.8	108.6	477.7	6.2	-73.2
Cyprus	20.2	20.1	-0.5	4.3	2.6	-39.5	15.9	17.5
Czechia	111.3	105.7	-5.0	135.9	147.4	8.5	-24.6	-41.7
Denmark	31.8	32.9	3.5	22.2	23.2	4.5	9.6	9.7
Estonia	4.1	4.3	4.9	5.5	4.1	-25.5	-1.4	0.2
Finland	11.0	12.1	10.0	12.7	9.1	-28.3	-1.7	3.0
France	188.1	182.2	-3.1	150.9	141.3	-6.4	37.2	40.9
Germany	754.1	891.5	18.2	568.5	587.2	3.3	185.6	304.3
Greece	316.2	298.1	-5.7	322.2	226.3	-29.8	-6.0	71.8
Hungary	82.9	86.4	4.2	207.0	250.2	20.9	-124.1	-163.8
Ireland	8.8	7.9	-10.2	27.8	27.2	-2.2	-19.0	-19.3
Italy	363.2	413.4	13.8	322.0	288.9	-10.3	41.2	124.5
Latvia	5.8	5.1	-12.1	3.4	5.2	52.9	2.4	-0.1
Lithuania	12.4	12.9	4.0	11.5	8.8	-23.5	0.9	4.1
Luxembourg	3.3	6.5	97.0	5.9	8.2	39.0	-2.6	-1.7
Malta	4.9	2.8	-42.9	5.7	1.8	-68.4	-0.8	1.0
Netherlands	154.5	104.8	-32.2	212.5	205.1	-3.5	-58.0	-100.3
Poland	124.4	122.0	-1.9	177.6	163.4	-8.0	-53.2	-41.4
Portugal	11.3	27.3	141.6	10.2	14.2	39.2	1.1	13.1
Romania	350.7	385.9	10.0	414.6	355.1	-14.4	-63.9	30.8
Slovakia	56.2	43.5	-22.6	71.5	80.9	13.1	-15.3	-37.4
Slovenia	22.7	25.1	10.6	33.1	33.2	0.3	-10.4	-8.1
Spain	127.6	119.6	-6.3	81.0	83.6	3.2	46.6	36.0
Sweden	44.4	37.3	-16.0	35.6	32.9	-7.6	8.8	4.4
Not specified	28.7	24.8	-13.6	11.7	7.4	-36.8	17.0	17.4

¹ Partner country:

- In case of exports (or dispatches) is the country (or Member State) of final destination of the goods.
- In case of imports (or arrivals) is the country (or Member State) of consignment of the goods.

² Data are preliminary as of 13-th April 2021.

Table 3

**Exports, imports and trade balance by groups of countries and main partner countries¹
of Bulgaria in January 2020² and 2021²**

(Continued)

Countries and groups of countries	Exports - FOB			Imports - CIF			Trade balance - FOB/CIF	
	2020	2021	Change compared to the same period of the previous year - %	2020	2021	Change compared to the same period of the previous year - %	2020	2021
	Million BGN			Million BGN			Million BGN	
Non EU countries	1780.1	1378.0	-22.6	2202.3	1873.3	-14.9	-422.2	-495.3
CIS³	91.6	76.8	-16.2	476.4	281.0	-41.0	-384.8	-204.2
of which:								
Kazakhstan	8.0	2.8	-65.0	4.2	0.1	-97.6	3.8	2.7
Russian Federation	60.2	54.2	-10.0	450.2	257.6	-42.8	-390.0	-203.4
OECD⁴	745.3	563.1	-24.4	605.6	562.0	-7.2	139.7	1.1
of which:								
Canada	29.4	8.1	-72.4	7.9	46.8	492.4	21.5	-38.7
Israel	10.9	15.6	43.1	6.7	5.0	-25.4	4.2	10.6
Japan	9.6	7.3	-24.0	24.5	31.4	28.2	-14.9	-24.1
Korea, Republic of	10.4	8.9	-14.4	23.2	21.6	-6.9	-12.8	-12.7
Turkey	408.1	310.0	-24.0	339.7	318.2	-6.3	68.4	-8.2
United Kingdom ⁵	115.0	69.7	-39.4	63.1	23.1	-63.4	51.9	46.6
United States	103.6	84.2	-18.7	60.6	32.3	-46.7	43.0	51.9
EFTA⁶	36.3	40.9	12.7	45.6	40.6	-11.0	-9.3	0.3
of which:								
Norway	6.5	6.7	3.1	5.1	4.0	-21.6	1.4	2.7
Switzerland	29.7	33.9	14.1	40.4	36.4	-9.9	-10.7	-2.5

¹ Partner country:

- In case of exports (or dispatches) is the country (or Member State) of final destination of the goods.
- In case of imports (or arrivals) is the country (or Member State) of consignment of the goods.

² Data are preliminary as of 13-th April 2021.

³ CIS includes: Azerbaijan; Armenia; Belarus; Kazakhstan; Kyrgyzstan; Moldova, Republic of; Russian Federation; Tajikistan; Turkmenistan; Uzbekistan.

⁴ OECD includes: Australia; Virgin Islands (US); United States; Iceland; Canada; Mexico; New Zealand; Norway; Korea, Republic of; Turkey; United Kingdom; Switzerland; Japan; Israel and Chile.

⁵ The United Kingdom includes Northern Ireland, Great Britain, Channel Islands and Isle of Man.

⁶ EFTA includes: Norway; Switzerland; Iceland and Liechtenstein.

Table 3

Exports, imports and trade balance by groups of countries and main partner countries¹ of Bulgaria in January 2020² and 2021²

(Continued and end)

Countries and groups of countries	Exports - FOB			Imports - CIF			Trade balance - FOB/CIF	
	2020	2021	Change compared to the same period of the previous year - %	2020	2021	Change compared to the same period of the previous year - %	2020	2021
	Million BGN			Million BGN			Million BGN	
Countries not included in the upper groups								
Albania	11.5	11.4	-0.9	6.1	3.7	-39.3	5.4	7.7
Bosnia and Herzegovina	13.3	9.7	-27.1	8.1	3.0	-63.0	5.2	6.7
Brazil	5.2	3.8	-26.9	5.3	5.6	5.7	-0.1	-1.8
China	168.8	138.8	-17.8	307.8	309.4	0.5	-139.0	-170.6
Egypt	41.1	46.1	12.2	145.0	23.0	-84.1	-103.9	23.1
Georgia	26.0	12.8	-50.8	58.8	79.4	35.0	-32.8	-66.6
India	17.8	12.4	-30.3	30.5	25.2	-17.4	-12.7	-12.8
Indonesia	3.6	3.0	-16.7	8.6	6.5	-24.4	-5.0	-3.5
Iran, Islamic Republic of	27.4	10.9	-60.2	5.9	3.2	-45.8	21.5	7.7
Peru	1.8	0.9	-50.0	73.6	140.8	91.3	-71.8	-139.9
Republic of North Macedonia	62.6	57.3	-8.5	50.2	35.5	-29.3	12.4	21.8
Serbia	85.3	75.8	-11.1	107.3	95.5	-11.0	-22.0	-19.7
Singapore	16.8	2.4	-85.7	6.3	7.2	14.3	10.5	-4.8
South Africa	31.2	3.6	-88.5	9.5	2.1	-77.9	21.7	1.5
Syrian Arab Republic	0.6	1.2	100.0	0.0	0.3	x	0.6	0.9
Taiwan	7.0	3.7	-47.1	21.3	28.6	34.3	-14.3	-24.9
Tunisia	31.3	14.4	-54.0	4.1	3.0	-26.8	27.2	11.4
Ukraine	32.7	25.8	-21.1	108.7	86.9	-20.1	-76.0	-61.1
United Arab Emirates	11.2	11.0	-1.8	4.4	6.8	54.5	6.8	4.2
Viet Nam	4.1	4.6	12.2	13.2	14.5	9.8	-9.1	-9.9

¹ Partner country:

- In case of exports (or dispatches) is the country (or Member State) of final destination of the goods.
- In case of imports (or arrivals) is the country (or Member State) of consignment of the goods.

² Data are preliminary as of 13-th April 2021.

'x' - not applicable.

'0' - less than half of unit employed.

Table 4

Exports, imports and trade balance of Bulgaria by sections of SITC, rev. 4
in January 2020¹ and 2021¹

Sections by SITC	Exports - FOB			Imports - CIF			Trade balance - FOB/CIF	
	2020	2021	Change compared to the same period of the previous year - %	2020	2021	Change compared to the same period of the previous year - %	2020	2021
	Million BGN			Million BGN			Million BGN	
Total	4989.4	4684.9	-6.1	5302.3	4957.2	-6.5	-312.9	-272.3
of which: EU	3209.3	3306.9	3.0	3100.0	3083.9	-0.5	109.3	223.0
Food and live animals	483.7	485.3	0.3	454.1	407.9	-10.2	29.6	77.4
of which: EU	312.0	291.7	-6.5	348.2	308.7	-11.3	-36.2	-17.0
Beverages and tobacco	79.0	56.0	-29.1	87.1	67.0	-23.1	-8.1	-11.0
of which: EU	46.7	37.8	-19.1	69.3	55.1	-20.5	-22.6	-17.3
Crude materials, inedible (except fuel)	383.8	419.4	9.3	539.9	553.7	2.6	-156.1	-134.3
of which: EU	215.0	267.7	24.5	126.8	124.5	-1.8	88.2	143.2
Mineral fuel, lubricants and related materials	435.2	159.2	-63.4	745.1	428.7	-42.5	-309.9	-269.5
of which: EU	88.6	51.8	-41.5	224.2	190.6	-15.0	-135.6	-138.8
Animals and vegetable oils, fats and waxes	90.4	85.7	-5.2	21.2	27.2	28.3	69.2	58.5
of which: EU	39.1	79.6	103.6	9.0	12.3	36.7	30.1	67.3
Chemical and related products n.e.c.	525.1	505.5	-3.7	731.2	807.1	10.4	-206.1	-301.6
of which: EU	330.5	324.1	-1.9	533.3	616.3	15.6	-202.8	-292.2
Manufactured goods classified chiefly by material	1067.7	1149.8	7.7	849.2	788.8	-7.1	218.5	361.0
of which: EU	726.6	840.3	15.6	460.8	426.9	-7.4	265.8	413.4
Machinery and transport equipment	1126.8	1115.1	-1.0	1357.7	1413.4	4.1	-230.9	-298.3
of which: EU	867.1	863.1	-0.5	984.1	1028.8	4.5	-117.0	-165.7
Miscellaneous manufactured articles	777.5	688.2	-11.5	477.9	420.1	-12.1	299.6	268.1
of which: EU	569.0	535.3	-5.9	309.1	282.5	-8.6	259.9	252.8
Commodities and transactions n.e.c.	20.2	20.7	2.5	38.9	43.3	11.3	-18.7	-22.6
of which: EU	14.7	15.5	5.4	35.2	38.2	8.5	-20.5	-22.7

¹ Data are preliminary as of 13-th April 2021.