

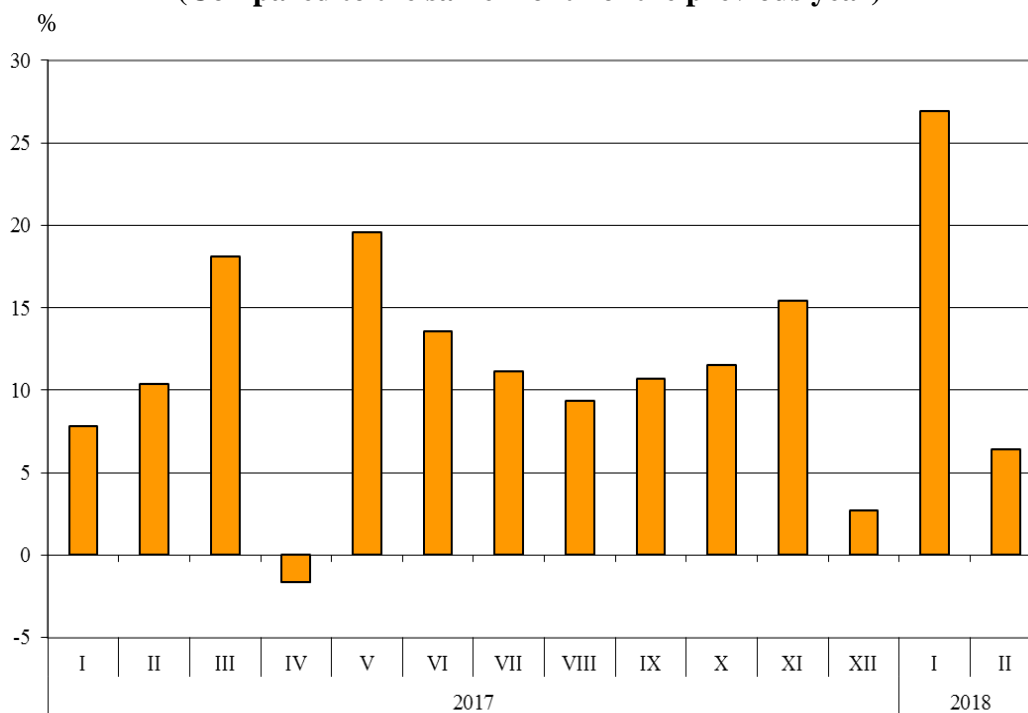


BULGARIAN TRADE WITH EU IN THE PERIOD JANUARY - FEBRUARY 2018 (PRELIMINARY DATA)

In the period **January - February 2018** Bulgarian exports to the EU increased by 16.5% compared to the same period of 2017 and amounted to 5 780.2 Million BGN (Annex, Table 1 and 2). Main trade partners of Bulgaria were Germany, Italy, Romania, Greece, France and Belgium which accounted for 68.3% of the exports to the EU Member States (Annex, Table 3).

In **February 2018** the exports to the EU grew by 6.4% compared to the corresponding month of the previous year and amounted to 2 685.9 Million BGN.

**Figure 1. Nominal value¹ change of exports of Bulgaria to EU in the period 2017 - 2018
(Compared to the same month of the previous year)**



In the period **January - February 2018** compared to the corresponding period of the previous year the largest growths in the exports of Bulgaria to the EU distributed according to the **Standard International Trade Classification** (Annex, Table 4) were recorded in the sections 'Animals and vegetable oils, fats and waxes' (61.8%) and 'Crude materials, inedible (except fuels)² (48.9%). The most notable fall was recorded in section 'Mineral fuel, lubricants and related materials' (22.7%).

¹ Value changes at current prices.

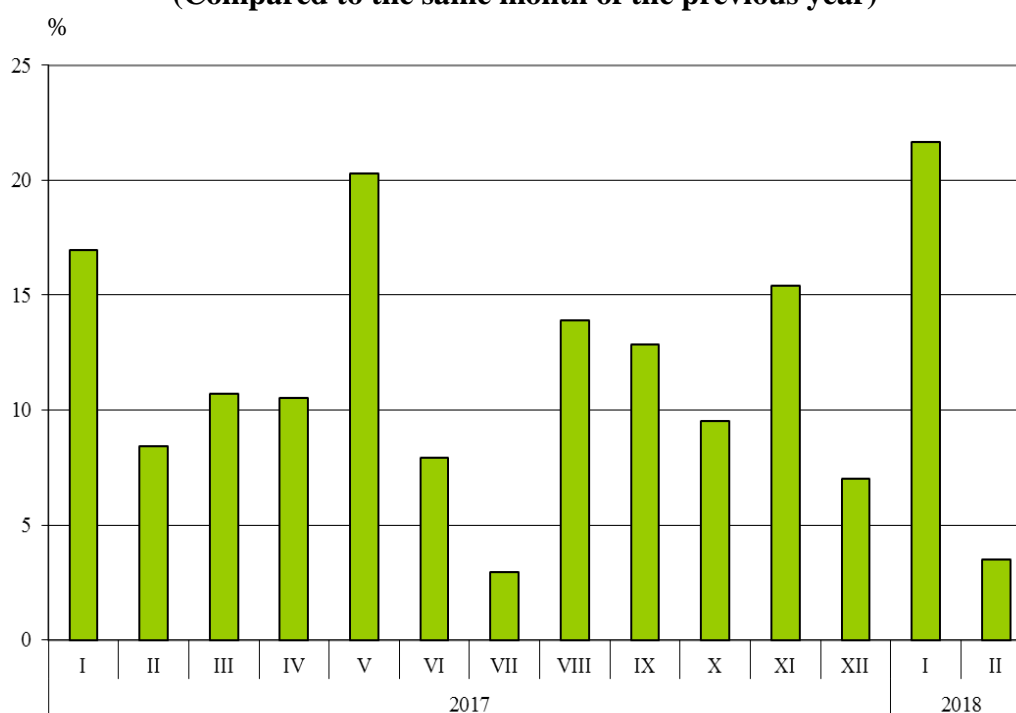
² The section includes following divisions: raw hides, skins and furskins; oil-seeds and oleaginous fruits; crude rubber; cork and wood; pulp and waste paper; textile fibres and their wastes; crude fertilizers and crude minerals; metalliferous ores and metal scrap; crude animal and vegetable materials, n.e.s.



Bulgarian **imports from the EU** in the period **January - February 2018** increased by 12.3% compared to the same period of 2017 and added up to 6 145.1 Million BGN at CIF prices (Annex, Tables 1 and 2). The largest amounts were reported for the goods imported from Germany, Italy, Romania, Spain and Greece (Annex, Table 3).

In **February 2018** the Bulgarian imports from the EU Member States grew by 3.5% compared to the corresponding month of the previous year and amounted to 2 918.8 Million BGN.

**Figure 2. Nominal value¹ change of imports of Bulgaria from EU in the period 2017 - 2018
(Compared to the same month of the previous year)**



In the period **January - February 2018** compared to the corresponding period of 2017 the largest growth in imports from the EU distributed according to the **Standard International Trade Classification** was reported in the section 'Beverages and tobacco' (22.9%) while fall was observed only in section 'Animals and vegetable oils, fats and waxes' (4.9%).

The **foreign trade balance** of Bulgaria (export FOB - import CIF) **with the EU** in the period January - February 2018 was negative and added up to 364.9 Million BGN (Annex, Table 1). At FOB/FOB prices (after elimination of transport and insurance costs on imports) the trade balance was positive and amounted to 7.8 Million BGN.

¹ Value changes at current prices.

Exports, imports and trade balance of Bulgaria in the period January - February 2017¹ and 2018¹ by months

Table 1
(Million BGN)

Months/Periods	Exports - FOB			Imports - CIF			Imports - FOB ²			Trade balance - FOB/CIF			Trade balance - FOB/FOB ²		
	Total	EU	Non EU	Total	EU	Non EU	Total	EU	Non EU	Total	EU	Non EU	Total	EU	Non EU
I.2017	3750.5	2438.4	1312.1	4229.9	2652.1	1577.8	3944.3	2480.5	1463.8	-479.4	-213.7	-265.7	-193.8	-42.1	-151.7
II.2017	4043.8	2523.6	1520.2	4428.9	2820.8	1608.1	4135.5	2647.2	1488.3	-385.1	-297.2	-87.9	-91.7	-123.6	31.9
I - II.2017	7794.3	4962.0	2832.3	8658.8	5472.9	3185.9	8079.8	5127.7	2952.1	-864.5	-510.9	-353.6	-285.5	-165.7	-119.8
I.2018	4192.3	3094.3	1098.0	5055.5	3226.3	1829.2	4713.2	3021.3	1691.9	-863.2	-132.0	-731.2	-520.9	73.0	-593.9
II.2018	3828.8	2685.9	1142.9	4572.9	2918.8	1654.1	4284.8	2751.1	1533.7	-744.1	-232.9	-511.2	-456.0	-65.2	-390.8
I - II.2018	8021.1	5780.2	2240.9	9628.4	6145.1	3483.3	8998.0	5772.4	3225.6	-1607.3	-364.9	-1242.4	-976.9	7.8	-984.7

¹ Data are preliminary as of 11-th May 2018.

² By data of BNB for the transport costs.

Table 2

Value changes of exports and imports of Bulgaria in the period
January - February 2018¹ compared to the same month of the previous year

(Per cent)

Months/Periods	Exports - FOB			Imports - CIF			Imports - FOB		
	Total	EU	Non EU	Total	EU	Non EU	Total	EU	Non EU
I	11.8	26.9	-16.3	19.5	21.7	15.9	19.5	21.8	15.6
II	-5.3	6.4	-24.8	3.3	3.5	2.9	3.6	3.9	3.1
I - II	2.9	16.5	-20.9	11.2	12.3	9.3	11.4	12.6	9.3

¹ Data are preliminary as of 11-th May 2018.

Table 3

Exports, imports and trade balance by groups of countries and main partner countries¹ of Bulgaria in the period January - February 2017² and 2018²

Countries and groups of countries	Exports - FOB			Imports - CIF			Trade balance - FOB/CIF	
	2017	2018	Change compared to the same period of the previous year - %	2017	2018	Change compared to the same period of the previous year - %	2017	2018
	Million BGN			Million BGN			Million BGN	
Total	7794.3	8021.1	2.9	8658.8	9628.4	11.2	-864.5	-1607.3
EU	4962.0	5780.2	16.5	5472.9	6145.1	12.3	-510.9	-364.9
Austria	151.7	156.0	2.8	201.4	234.4	16.4	-49.7	-78.4
Belgium	230.7	356.2	54.4	166.6	188.3	13.0	64.1	167.9
Croatia	38.4	45.1	17.4	16.2	25.3	56.2	22.2	19.8
Cyprus	24.7	25.6	3.6	9.1	68.6	653.8	15.6	-43.0
Czech Republic	158.6	177.5	11.9	186.3	213.4	14.5	-27.7	-35.9
Denmark	47.6	50.2	5.5	41.4	45.4	9.7	6.2	4.8
Estonia	7.3	9.2	26.0	5.2	7.3	40.4	2.1	1.9
Finland	12.0	17.6	46.7	13.3	26.2	97.0	-1.3	-8.6
France	339.0	359.7	6.1	270.2	289.9	7.3	68.8	69.8
Germany	1104.6	1346.5	21.9	1051.0	1221.5	16.2	53.6	125.0
Greece	450.1	536.2	19.1	359.8	402.4	11.8	90.3	133.8
Hungary	143.0	139.2	-2.7	325.1	352.5	8.4	-182.1	-213.3
Ireland	11.9	13.0	9.2	42.4	43.5	2.6	-30.5	-30.5
Italy	664.3	774.0	16.5	602.7	671.4	11.4	61.6	102.6
Latvia	10.0	9.6	-4.0	13.0	10.4	-20.0	-3.0	-0.8
Lithuania	21.8	22.5	3.2	11.7	14.6	24.8	10.1	7.9
Luxembourg	2.0	2.1	5.0	32.9	22.4	-31.9	-30.9	-20.3
Malta	10.2	7.3	-28.4	3.4	69.8	1952.9	6.8	-62.5
Netherlands	234.1	263.6	12.6	321.1	347.2	8.1	-87.0	-83.6
Poland	187.2	226.3	20.9	313.8	284.0	-9.5	-126.6	-57.7
Portugal	35.7	24.0	-32.8	11.3	44.7	295.6	24.4	-20.7
Romania	548.5	574.6	4.8	620.1	657.4	6.0	-71.6	-82.8
Slovakia	52.1	60.3	15.7	111.7	126.8	13.5	-59.6	-66.5
Slovenia	50.3	53.5	6.4	62.0	66.2	6.8	-11.7	-12.7
Spain	132.6	205.9	55.3	443.6	482.2	8.7	-311.0	-276.3
Sweden	63.6	72.6	14.2	52.6	64.2	22.1	11.0	8.4
United Kingdom	195.0	211.2	8.3	152.1	148.7	-2.2	42.9	62.5
Not specified	35.0	40.7	16.3	32.9	16.4	-50.2	2.1	24.3

¹ Partner country:

- In case of exports (or dispatches) is the country (or Member State) of final destination of the goods.
- In case of imports (or arrivals) is the country (or Member State) of consignment of the goods.

² Data are preliminary as of 11-th May 2018.



Table 3

Exports, imports and trade balance by groups of countries and main partner countries¹ of Bulgaria
in the period January - February 2017² and 2018²

(Continued)

Countries and groups of countries	Exports - FOB			Imports - CIF			Trade balance - FOB/CIF	
	2017	2018	Change compared to the same period of the previous year - %	2017	2018	Change compared to the same period of the previous year - %	2017	2018
	Million BGN			Million BGN			Million BGN	
Non EU countries	2832.3	2240.9	-20.9	3185.9	3483.3	9.3	-353.6	-1242.4
CIS³	144.8	216.4	49.4	1108.0	1040.6	-6.1	-963.2	-824.2
of which:								
Kazakhstan	3.3	9.8	197.0	7.5	3.2	-57.3	-4.2	6.6
Russian Federation	105.5	121.2	14.9	939.9	847.7	-9.8	-834.4	-726.5
Ukraine	10.8	45.9	325.0	126.4	161.8	28.0	-115.6	-115.9
OECD⁴	910.7	815.1	-10.5	806.4	906.1	12.4	104.3	-91.0
of which:								
Canada	10.5	13.7	30.5	11.7	24.4	108.5	-1.2	-10.7
Israel	23.1	21.0	-9.1	13.6	14.8	8.8	9.5	6.2
Japan	10.7	12.1	13.1	26.8	36.2	35.1	-16.1	-24.1
Korea, Republic of	8.1	12.5	54.3	34.1	48.1	41.1	-26.0	-35.6
Turkey	744.2	528.6	-29.0	554.6	576.4	3.9	189.6	-47.8
United States	77.0	140.8	82.9	65.8	120.5	83.1	11.2	20.3
EFTA⁵	19.6	61.5	213.8	68.8	69.2	0.6	-49.2	-7.7
of which:								
Norway	2.2	12.5	468.2	9.7	5.6	-42.3	-7.5	6.9
Switzerland	16.9	48.0	184.0	57.7	62.1	7.6	-40.8	-14.1

¹ Partner country:

- In case of exports (or dispatches) is the country (or Member State) of final destination of the goods.
- In case of imports (or arrivals) is the country (or Member State) of consignment of the goods.

² Data are preliminary as of 11-th May 2018.

³ CIS includes: Azerbaijan; Armenia; Belarus; Kazakhstan; Kyrgyz Republic; Moldova, Republic of; Russian Federation; Tajikistan; Turkmenistan; Uzbekistan and Ukraine.

⁴ OECD includes: Australia; Virgin Islands (US); United States; Iceland; Canada; Mexico; New Zealand; Norway; Korea, Republic of; Turkey; Switzerland; Japan; Israel and Chile.

⁵ EFTA includes: Norway; Switzerland; Iceland and Liechtenstein.



Table 3

Exports, imports and trade balance by groups of countries and main partner countries¹ of Bulgaria in the period January - February 2017² and 2018²

(Continued and end)

Countries and groups of countries	Exports - FOB			Imports - CIF			Trade balance - FOB/CIF	
	2017	2018	Change compared to the same period of the previous year - %	2017	2018	Change compared to the same period of the previous year - %	2017	2018
	Million BGN			Million BGN			Million BGN	
Countries not included in the upper groups								
Albania	14.7	27.0	83.7	5.9	3.8	-35.6	8.8	23.2
Bosnia and Herzegovina	21.1	19.9	-5.7	10.8	5.9	-45.4	10.3	14.0
Brazil	3.4	5.6	64.7	6.3	14.7	133.3	-2.9	-9.1
China	216.9	221.8	2.3	347.7	453.7	30.5	-130.8	-231.9
Egypt	278.8	23.5	-91.6	141.8	83.8	-40.9	137.0	-60.3
Former Yugoslav Republic of Macedonia	118.3	134.1	13.4	85.6	97.3	13.7	32.7	36.8
Georgia	43.7	38.8	-11.2	86.8	182.5	110.3	-43.1	-143.7
India	68.7	22.4	-67.4	42.0	63.6	51.4	26.7	-41.2
Indonesia	8.2	8.5	3.7	15.2	18.1	19.1	-7.0	-9.6
Iran, Islamic Republic of	29.6	14.0	-52.7	63.0	12.1	-80.8	-33.4	1.9
Peru	0.9	5.6	522.2	8.2	2.8	-65.9	-7.3	2.8
Serbia	123.8	124.6	0.6	156.3	189.5	21.2	-32.5	-64.9
Singapore	80.1	71.7	-10.5	14.4	16.9	17.4	65.7	54.8
South Africa	23.8	16.5	-30.7	7.2	13.5	87.5	16.6	3.0
Syrian Arab Republic	17.1	2.4	-86.0	-	0.3	x	17.1	2.1
Taiwan	4.3	8.8	104.7	37.2	32.3	-13.2	-32.9	-23.5
United Arab Emirates	77.4	32.2	-58.4	9.5	9.3	-2.1	67.9	22.9
Viet Nam	5.1	6.9	35.3	13.4	19.3	44.0	-8.3	-12.4

¹ Partner country:

- In case of exports (or dispatches) is the country (or Member State) of final destination of the goods.
- In case of imports (or arrivals) is the country (or Member State) of consignment of the goods.

² Data are preliminary as of 11-th May 2018.

'x' - category not applicable.

'-' - no case.



**Exports, imports and trade balance of Bulgaria by sections of SITC, rev. 4
in the period January - February 2017¹ and 2018¹**

Sections by SITC	Exports - FOB			Imports - CIF			Trade balance - FOB/CIF	
	2017	2018	Change compared to the same period of the previous year - %	2017	2018	Change compared to the same period of the previous year - %	2017	2018
	Million BGN			Million BGN			Million BGN	
Total	7794.3	8021.1	2.9	8658.8	9628.4	11.2	-864.5	-1607.3
of which EU	4962.0	5780.2	16.5	5472.9	6145.1	12.3	-510.9	-364.9
Food and live animals	707.7	770.2	8.8	674.2	739.2	9.6	33.5	31.0
of which EU	446.3	609.1	36.5	542.8	592.7	9.2	-96.5	16.4
Beverages and tobacco	124.2	80.1	-35.5	80.4	100.0	24.4	43.8	-19.9
of which EU	37.8	39.4	4.2	66.3	81.5	22.9	-28.5	-42.1
Crude materials, inedible (except fuel)	438.9	569.6	29.8	840.8	947.9	12.7	-401.9	-378.3
of which EU	260.0	387.2	48.9	505.6	549.3	8.6	-245.6	-162.1
Mineral fuel, lubricants and related materials	949.9	379.5	-60.0	1390.3	1252.0	-9.9	-440.4	-872.5
of which EU	181.2	140.0	-22.7	273.0	325.8	19.3	-91.8	-185.8
Animals and vegetable oils, fats and waxes	76.8	94.3	22.8	28.8	34.4	19.4	48.0	59.9
of which EU	42.2	68.3	61.8	18.4	17.5	-4.9	23.8	50.8
Chemical and related products n.e.c.	784.0	822.5	4.9	1326.7	1373.0	3.5	-542.7	-550.5
of which EU	512.7	522.5	1.9	1048.7	1058.7	1.0	-536.0	-536.2
Manufactured goods classified chiefly by material	1756.2	2088.1	18.9	1430.3	1668.9	16.7	325.9	419.2
of which EU	1240.8	1493.9	20.4	835.0	936.2	12.1	405.8	557.7
Machinery and transport equipment	1601.3	1903.1	18.8	2136.7	2684.0	25.6	-535.4	-780.9
of which EU	1222.8	1449.1	18.5	1658.4	2010.7	21.2	-435.6	-561.6
Miscellaneous manufactured articles	1337.0	1288.4	-3.6	704.7	773.8	9.8	632.3	514.6
of which EU	1004.6	1050.1	4.5	484.2	523.6	8.1	520.4	526.5
Commodities and transactions n.e.c.	18.3	25.3	38.3	45.9	55.2	20.3	-27.6	-29.9
of which EU	13.6	20.6	51.5	40.5	49.1	21.2	-26.9	-28.5

¹ Data are preliminary as of 11-th May 2018.