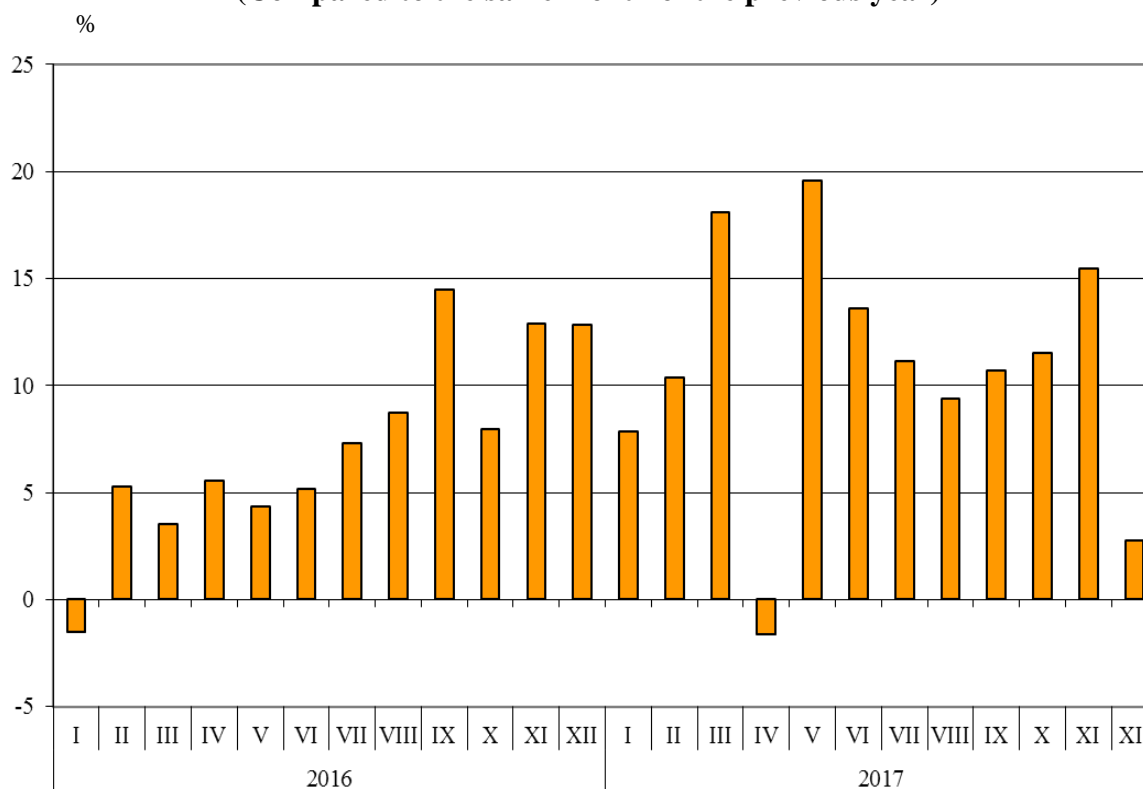


## BULGARIAN TRADE WITH EU IN 2017 (PRELIMINARY DATA)

In **2017** Bulgarian **exports to the EU** grew by 10.8% in comparison with 2016 and amounted to 34 518.7 Million BGN (Annex, Table 1 and 2). Main trade partners of Bulgaria were Germany, Italy, Romania, Greece, Belgium and France which accounted for 67.5% of the exports to the EU Member States (Annex, Table 3).

In **December 2017** the exports to the EU increased by 2.7% compared to the corresponding month of the previous year and added up to 2 507.8 Million BGN.

**Figure 1. Nominal value<sup>1</sup> change of exports of Bulgaria to EU in the period 2016 - 2017  
(Compared to the same month of the previous year)**



In **2017** in comparison with 2016 the largest growths in the exports of Bulgaria to the EU distributed according to the **Standard International Trade Classification** (Annex, Table 4) were recorded in the sections ‘Animals and vegetable oils, fats and waxes’ (30.3%) and ‘Manufactured goods classified chiefly by material’<sup>2</sup> (23.9%). The most notable fall was recorded in section ‘Beverages and tobacco’ (14.8%).

<sup>1</sup> Value changes at current prices.

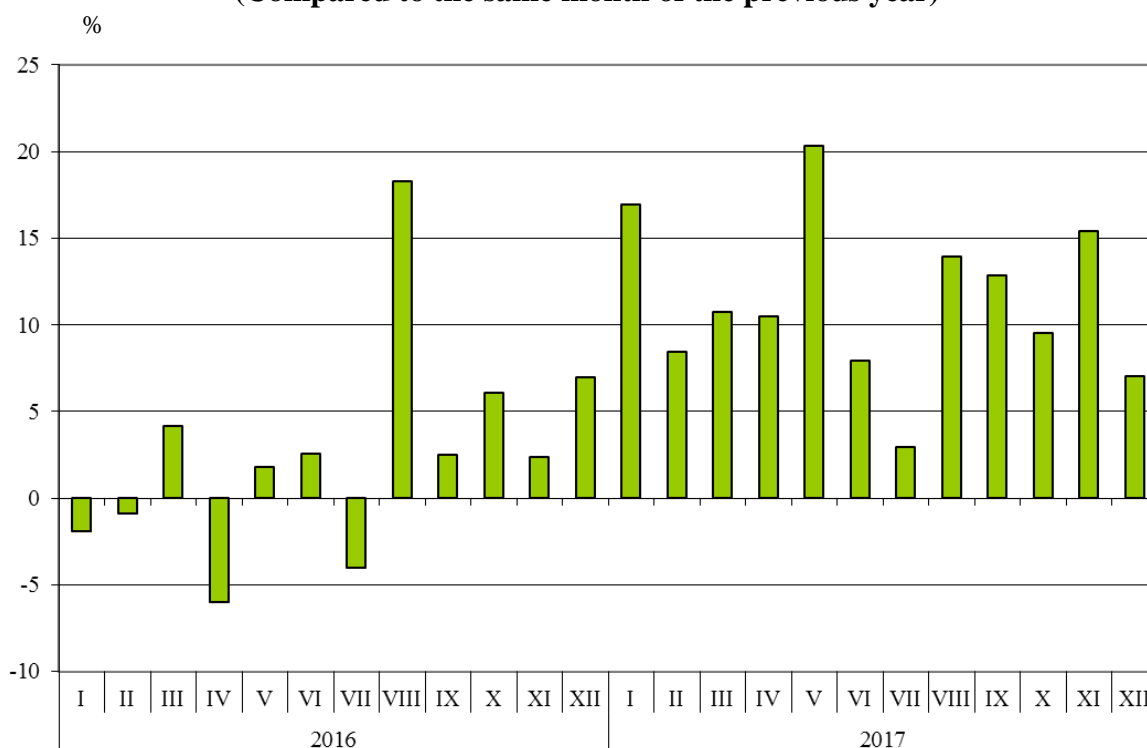
<sup>2</sup> The section includes the following divisions: leather, leather manufactures, n.e.s., and dressed furskins; rubber manufactures, n.e.s.; cork and wood manufactures (excluding furniture); paper, paperboard and articles of paper pulp, of paper or of



Bulgarian imports from the EU in 2017 increased by 11.2% compared to the previous year and reached 37 794.7 Million BGN at CIF prices (Annex, Tables 1 and 2). The largest amounts were reported for the goods imported from Germany, Italy, Romania, Spain and Greece (Annex, Table 3).

In December 2017 the Bulgarian imports from the EU Member States grew by 7.0% in comparison with December 2016 and amounted to 3 280.7 Million BGN.

**Figure 2. Nominal value<sup>1</sup> change of imports of Bulgaria from EU in the period 2016 - 2017  
(Compared to the same month of the previous year)**



In 2017 compared to 2016 the largest growth in imports from the EU distributed according to the **Standard International Trade Classification** was reported in the section 'Crude materials, inedible (except fuel)<sup>2</sup> (45.6%) while fall was observed only in the section 'Animals and vegetable oils, fats and waxes' (5.6%).

The **foreign trade balance** of Bulgaria (export FOB - import CIF) **with the EU** in 2017 was negative and added up to 3 276.0 Million BGN (Annex, Table 1). At FOB/FOB prices (after elimination of transport and insurance costs on imports) the trade balance was also negative and amounted to 950.6 Million BGN.

paperboard; textile yarn, fabrics, made-up articles, n.e.s., and related products; non-metallic mineral manufactures, n.e.s.; iron and steel; non-ferrous metals.

<sup>1</sup> Value changes at current prices.

<sup>2</sup> The section includes the following divisions: raw hides, skins and furskins; oil-seeds and oleaginous fruits; crude rubber; cork and wood; pulp and waste paper; textile fibres and their wastes; crude fertilizers and crude minerals; metalliferous ores and metal scrap; crude animal and vegetable materials, n.e.c.

Annex

Table 1

Exports, imports and trade balance of Bulgaria in 2016 and 2017<sup>1</sup> by months

(Million BGN)

Months/Periods	Exports - FOB			Imports - CIF			Imports - FOB <sup>2</sup>			Trade balance - FOB/CIF			Trade balance - FOB/FOB <sup>2</sup>		
	Total	EU	Non-EU	Total	EU	Non-EU	Total	EU	Non-EU	Total	EU	Non-EU	Total	EU	Non-EU
I.2016	3411.3	2261.2	1150.1	3501.5	2267.8	1233.7	3271.4	2121.9	1149.5	-90.2	-6.6	-83.6	139.9	139.3	0.6
II.2016	3471.9	2286.8	1185.1	3850.2	2601.3	1248.9	3613.4	2453.9	1159.5	-378.3	-314.5	-63.8	-141.5	-167.1	25.6
III.2016	3665.4	2507.8	1157.6	4237.1	3005.8	1231.3	3971.8	2825.6	1146.2	-571.7	-498.0	-73.7	-306.4	-317.8	11.4
<b>I - III.2016</b>	<b>10548.6</b>	<b>7055.8</b>	<b>3492.8</b>	<b>11588.8</b>	<b>7874.9</b>	<b>3713.9</b>	<b>10856.6</b>	<b>7401.4</b>	<b>3455.2</b>	<b>-1040.2</b>	<b>-819.1</b>	<b>-221.1</b>	<b>-308.0</b>	<b>-345.6</b>	<b>37.6</b>
IV.2016	3744.0	2537.4	1206.6	4021.8	2694.4	1327.4	3782.7	2547.3	1235.4	-277.8	-157.0	-120.8	-38.7	-9.9	-28.8
V.2016	3618.9	2397.6	1221.3	4096.9	2629.0	1467.9	3844.0	2481.4	1362.6	-478.0	-231.4	-246.6	-225.1	-83.8	-141.3
VI.2016	4068.4	2695.3	1373.1	4318.7	2902.4	1416.3	4050.8	2733.3	1317.5	-250.3	-207.1	-43.2	17.6	-38.0	55.6
<b>IV - VI.2016</b>	<b>11431.3</b>	<b>7630.3</b>	<b>3801.0</b>	<b>12437.4</b>	<b>8225.8</b>	<b>4211.6</b>	<b>11677.5</b>	<b>7762.0</b>	<b>3915.5</b>	<b>-1006.1</b>	<b>-595.5</b>	<b>-410.6</b>	<b>-246.2</b>	<b>-131.7</b>	<b>-114.5</b>
<b>I - VI.2016</b>	<b>21979.9</b>	<b>14686.1</b>	<b>7293.8</b>	<b>24026.2</b>	<b>16100.7</b>	<b>7925.5</b>	<b>22534.1</b>	<b>15163.4</b>	<b>7370.7</b>	<b>-2046.3</b>	<b>-1414.6</b>	<b>-631.7</b>	<b>-554.2</b>	<b>-477.3</b>	<b>-76.9</b>
VII.2016	4192.5	2821.3	1371.2	4344.2	2924.1	1420.1	4062.8	2746.7	1316.1	-151.7	-102.8	-48.9	129.7	74.6	55.1
VIII.2016	4024.8	2679.7	1345.1	4442.1	2787.3	1654.8	4140.6	2613.3	1527.3	-417.3	-107.6	-309.7	-115.8	66.4	-182.2
IX.2016	4170.7	2843.7	1327.0	4180.3	2742.0	1438.3	3917.9	2587.1	1330.8	-9.6	101.7	-111.3	252.8	256.6	-3.8
<b>VII - IX.2016</b>	<b>12388.0</b>	<b>8344.7</b>	<b>4043.3</b>	<b>12966.6</b>	<b>8453.4</b>	<b>4513.2</b>	<b>12121.3</b>	<b>7947.1</b>	<b>4174.2</b>	<b>-578.6</b>	<b>-108.7</b>	<b>-469.9</b>	<b>266.7</b>	<b>397.6</b>	<b>-130.9</b>
<b>I - IX.2016</b>	<b>34367.9</b>	<b>23030.8</b>	<b>11337.1</b>	<b>36992.8</b>	<b>24554.1</b>	<b>12438.7</b>	<b>34655.4</b>	<b>23110.5</b>	<b>11544.9</b>	<b>-2624.9</b>	<b>-1523.3</b>	<b>-1101.6</b>	<b>-287.5</b>	<b>-79.7</b>	<b>-207.8</b>
X.2016	4303.9	2901.8	1402.1	4831.3	3252.1	1579.2	4517.7	3042.3	1475.4	-527.4	-350.3	-177.1	-213.8	-140.5	-73.3
XI.2016	4370.5	2783.9	1586.6	4737.6	3117.7	1619.9	4439.2	2937.4	1501.8	-367.1	-333.8	-33.3	-68.7	-153.5	84.8
XII.2016	4144.0	2441.1	1702.9	4644.5	3065.4	1579.1	4356.7	2882.3	1474.4	-500.5	-624.3	123.8	-212.7	-441.2	228.5
<b>X - XII.2016</b>	<b>12818.4</b>	<b>8126.8</b>	<b>4691.6</b>	<b>14213.4</b>	<b>9435.2</b>	<b>4778.2</b>	<b>13313.6</b>	<b>8862.0</b>	<b>4451.6</b>	<b>-1395.0</b>	<b>-1308.4</b>	<b>-86.6</b>	<b>-495.2</b>	<b>-735.2</b>	<b>240.0</b>
<b>I - XII.2016</b>	<b>47186.3</b>	<b>31157.6</b>	<b>16028.7</b>	<b>51206.2</b>	<b>33989.3</b>	<b>17216.9</b>	<b>47969.0</b>	<b>31972.5</b>	<b>15996.5</b>	<b>-4019.9</b>	<b>-2831.7</b>	<b>-1188.2</b>	<b>-782.7</b>	<b>-814.9</b>	<b>32.2</b>

<sup>1</sup> Data are preliminary as of 13-th of March 2018.

<sup>2</sup> By data of BNB for the transport costs.

Table 1

Exports, imports and trade balance of Bulgaria in 2016 and 2017<sup>1</sup> by months

(Continued and end)

(Million BGN )

Months/Periods	Exports - FOB			Imports - CIF			Imports - FOB <sup>2</sup>			Trade balance - FOB/CIF			Trade balance - FOB/FOB <sup>2</sup>		
	Total	EU	Non-EU	Total	EU	Non-EU	Total	EU	Non-EU	Total	EU	Non-EU	Total	EU	Non-EU
I.2017	3750.5	2438.4	1312.1	4229.9	2652.1	1577.8	3944.3	2480.5	1463.8	-479.4	-213.7	-265.7	-193.8	-42.1	-151.7
II.2017	4043.8	2523.6	1520.2	4428.9	2820.8	1608.1	4135.5	2647.2	1488.3	-385.1	-297.2	-87.9	-91.7	-123.6	31.9
III.2017	4373.3	2962.0	1411.3	5305.7	3328.1	1977.6	4972.9	3134.4	1838.5	-932.4	-366.1	-566.3	-599.6	-172.4	-427.2
<b>I - III.2017</b>	<b>12167.6</b>	<b>7924.0</b>	<b>4243.6</b>	<b>13964.5</b>	<b>8801.0</b>	<b>5163.5</b>	<b>13052.7</b>	<b>8262.1</b>	<b>4790.6</b>	<b>-1796.9</b>	<b>-877.0</b>	<b>-919.9</b>	<b>-885.1</b>	<b>-338.1</b>	<b>-547.0</b>
IV.2017	3907.0	2495.6	1411.4	4684.4	2977.7	1706.7	4385.0	2792.3	1592.7	-777.4	-482.1	-295.3	-478.0	-296.7	-181.3
V.2017	4457.5	2867.3	1590.2	4946.4	3163.0	1783.4	4635.0	2973.9	1661.1	-488.9	-295.7	-193.2	-177.5	-106.6	-70.9
VI.2017	4630.5	3061.3	1569.2	4911.0	3132.1	1778.9	4602.3	2946.7	1655.6	-280.5	-70.8	-209.7	28.2	114.6	-86.4
<b>IV - VI.2017</b>	<b>12995.0</b>	<b>8424.2</b>	<b>4570.8</b>	<b>14541.8</b>	<b>9272.8</b>	<b>5269.0</b>	<b>13622.3</b>	<b>8712.9</b>	<b>4909.4</b>	<b>-1546.8</b>	<b>-848.6</b>	<b>-698.2</b>	<b>-627.3</b>	<b>-288.7</b>	<b>-338.6</b>
<b>I - VI.2017</b>	<b>25162.6</b>	<b>16348.2</b>	<b>8814.4</b>	<b>28506.3</b>	<b>18073.8</b>	<b>10432.5</b>	<b>26675.0</b>	<b>16975.0</b>	<b>9700.0</b>	<b>-3343.7</b>	<b>-1725.6</b>	<b>-1618.1</b>	<b>-1512.4</b>	<b>-626.8</b>	<b>-885.6</b>
VII.2017	4614.9	3135.1	1479.8	4713.0	3010.5	1702.5	4422.4	2834.0	1588.4	-98.1	124.6	-222.7	192.5	301.1	-108.6
VIII.2017	4320.1	2931.0	1389.1	4969.0	3175.0	1794.0	4626.4	2958.6	1667.8	-648.9	-244.0	-404.9	-306.3	-27.6	-278.7
IX.2017	4491.2	3147.3	1343.9	4712.6	3094.8	1617.8	4405.9	2913.5	1492.4	-221.4	52.5	-273.9	85.3	233.8	-148.5
<b>VII - IX.2017</b>	<b>13426.2</b>	<b>9213.4</b>	<b>4212.8</b>	<b>14394.6</b>	<b>9280.3</b>	<b>5114.3</b>	<b>13454.7</b>	<b>8706.1</b>	<b>4748.6</b>	<b>-968.4</b>	<b>-66.9</b>	<b>-901.5</b>	<b>-28.5</b>	<b>507.3</b>	<b>-535.8</b>
<b>I - IX.2017</b>	<b>38588.8</b>	<b>25561.6</b>	<b>13027.2</b>	<b>42900.9</b>	<b>27354.1</b>	<b>15546.8</b>	<b>40129.7</b>	<b>25681.1</b>	<b>14448.6</b>	<b>-4312.1</b>	<b>-1792.5</b>	<b>-2519.6</b>	<b>-1540.9</b>	<b>-119.5</b>	<b>-1421.4</b>
X.2017	4954.7	3235.3	1719.4	5450.1	3561.4	1888.7	5088.0	3337.8	1750.2	-495.4	-326.1	-169.3	-133.3	-102.5	-30.8
XI.2017	4598.9	3214.0	1384.9	5476.0	3598.5	1877.5	5128.1	3376.7	1751.4	-877.1	-384.5	-492.6	-529.2	-162.7	-366.5
XII.2017	4104.1	2507.8	1596.3	5326.2	3280.7	2045.5	4973.7	3073.7	1900.0	-1222.1	-772.9	-449.2	-869.6	-565.9	-303.7
<b>X - XII.2017</b>	<b>13657.7</b>	<b>8957.1</b>	<b>4700.6</b>	<b>16252.3</b>	<b>10440.6</b>	<b>5811.7</b>	<b>15189.8</b>	<b>9788.2</b>	<b>5401.6</b>	<b>-2594.6</b>	<b>-1483.5</b>	<b>-1111.1</b>	<b>-1532.1</b>	<b>-831.1</b>	<b>-701.0</b>
<b>I - XII.2017</b>	<b>52246.5</b>	<b>34518.7</b>	<b>17727.8</b>	<b>59153.2</b>	<b>37794.7</b>	<b>21358.5</b>	<b>55319.5</b>	<b>35469.3</b>	<b>19850.2</b>	<b>-6906.7</b>	<b>-3276.0</b>	<b>-3630.7</b>	<b>-3073.0</b>	<b>-950.6</b>	<b>-2122.4</b>

<sup>1</sup> Data are preliminary as of 13-th of March 2018.

<sup>2</sup> By data of BNB for the transport costs.

Table 2

Value changes of exports and imports of Bulgaria in 2017<sup>1</sup> compared to the same period of the previous year

(Per cent)

Months/Periods	Exports - FOB			Imports - CIF			Imports - FOB		
	Total	EU	Non EU	Total	EU	Non EU	Total	EU	Non EU
I	9.9	7.8	14.1	20.8	16.9	27.9	20.6	16.9	27.3
II	16.5	10.4	28.3	15.0	8.4	28.8	14.4	7.9	28.4
III	19.3	18.1	21.9	25.2	10.7	60.6	25.2	10.9	60.4
<b>I - III</b>	<b>15.3</b>	<b>12.3</b>	<b>21.5</b>	<b>20.5</b>	<b>11.8</b>	<b>39.0</b>	<b>20.2</b>	<b>11.6</b>	<b>38.6</b>
IV	4.4	-1.6	17.0	16.5	10.5	28.6	15.9	9.6	28.9
V	23.2	19.6	30.2	20.7	20.3	21.5	20.6	19.8	21.9
VI	13.8	13.6	14.3	13.7	7.9	25.6	13.6	7.8	25.7
<b>IV - VI</b>	<b>13.7</b>	<b>10.4</b>	<b>20.3</b>	<b>16.9</b>	<b>12.7</b>	<b>25.1</b>	<b>16.7</b>	<b>12.3</b>	<b>25.4</b>
<b>I - VI</b>	<b>14.5</b>	<b>11.3</b>	<b>20.8</b>	<b>18.6</b>	<b>12.3</b>	<b>31.6</b>	<b>18.4</b>	<b>11.9</b>	<b>31.6</b>
VII	10.1	11.1	7.9	8.5	3.0	19.9	8.9	3.2	20.7
VIII	7.3	9.4	3.3	11.9	13.9	8.4	11.7	13.2	9.2
IX	7.7	10.7	1.3	12.7	12.9	12.5	12.5	12.6	12.1
<b>VII - IX</b>	<b>8.4</b>	<b>10.4</b>	<b>4.2</b>	<b>11.0</b>	<b>9.8</b>	<b>13.3</b>	<b>11.0</b>	<b>9.6</b>	<b>13.8</b>
<b>I - IX</b>	<b>12.3</b>	<b>11.0</b>	<b>14.9</b>	<b>16.0</b>	<b>11.4</b>	<b>25.0</b>	<b>15.8</b>	<b>11.1</b>	<b>25.2</b>
X	15.1	11.5	22.6	12.8	9.5	19.6	12.6	9.7	18.6
XI	5.2	15.4	-12.7	15.6	15.4	15.9	15.5	15.0	16.6
XII	-1.0	2.7	-6.3	14.7	7.0	29.5	14.2	6.6	28.9
<b>X - XII</b>	<b>6.5</b>	<b>10.2</b>	<b>0.2</b>	<b>14.3</b>	<b>10.7</b>	<b>21.6</b>	<b>14.1</b>	<b>10.5</b>	<b>21.3</b>
<b>I - XII</b>	<b>10.7</b>	<b>10.8</b>	<b>10.6</b>	<b>15.5</b>	<b>11.2</b>	<b>24.1</b>	<b>15.3</b>	<b>10.9</b>	<b>24.1</b>

<sup>1</sup> Data are preliminary as of 13-th March 2018.

Table 3

Exports, imports and trade balance by groups of countries and main partner countries<sup>1</sup> of Bulgaria in 2016 and 2017<sup>2</sup>

Countries and groups of countries	Exports - FOB			Imports - CIF			Trade balance - FOB/CIF	
	2016	2017	Change compared to the same period of the previous year - %	2016	2017	Change compared to the same period of the previous year - %	2016	2017
	Million BGN			Million BGN			Million BGN	
<b>Total</b>	<b>47186.3</b>	<b>52246.5</b>	<b>10.7</b>	<b>51206.2</b>	<b>59153.2</b>	<b>15.5</b>	<b>-4019.9</b>	<b>-6906.7</b>
<b>EU</b>	<b>31157.6</b>	<b>34518.7</b>	<b>10.8</b>	<b>33989.3</b>	<b>37794.7</b>	<b>11.2</b>	<b>-2831.7</b>	<b>-3276.0</b>
Austria	898.7	961.0	6.9	1412.3	1423.9	0.8	-513.6	-462.9
Belgium	1264.5	2184.3	72.7	1188.4	1247.7	5.0	76.1	936.6
Croatia	218.7	223.3	2.1	123.0	155.5	26.4	95.7	67.8
Cyprus	160.4	157.3	-1.9	57.9	244.5	322.3	102.5	-87.2
Czech Republic	787.2	1068.1	35.7	1086.9	1335.3	22.9	-299.7	-267.2
Denmark	283.3	314.9	11.2	233.9	271.4	16.0	49.4	43.5
Estonia	42.7	47.3	10.8	32.3	59.2	83.3	10.4	-11.9
Finland	80.8	86.6	7.2	132.1	125.1	-5.3	-51.3	-38.5
France	2079.8	2137.1	2.8	1611.8	1705.3	5.8	468.0	431.8
Germany	6291.2	7025.2	11.7	6694.1	7243.0	8.2	-402.9	-217.8
Greece	3228.4	3359.0	4.0	2462.4	2606.4	5.8	766.0	752.6
Hungary	764.6	903.0	18.1	1948.9	2088.1	7.1	-1184.3	-1185.1
Ireland	66.3	90.8	37.0	192.1	223.5	16.3	-125.8	-132.7
Italy	4245.3	4326.7	1.9	4049.5	4289.6	5.9	195.8	37.1
Latvia	53.5	58.1	8.6	69.2	70.2	1.4	-15.7	-12.1
Lithuania	111.9	139.6	24.8	99.4	89.4	-10.1	12.5	50.2
Luxembourg	12.0	18.3	52.5	170.8	180.6	5.7	-158.8	-162.3
Malta	73.2	36.6	-50.0	33.5	74.7	123.0	39.7	-38.1
Netherlands	1248.0	1295.3	3.8	1868.3	2173.8	16.4	-620.3	-878.5
Poland	1145.7	1228.4	7.2	2066.2	2136.3	3.4	-920.5	-907.9
Portugal	200.6	230.3	14.8	93.3	103.1	10.5	107.3	127.2
Romania	4048.3	4261.1	5.3	3548.7	4172.5	17.6	499.6	88.6
Slovakia	321.9	405.1	25.8	686.5	762.9	11.1	-364.6	-357.8
Slovenia	386.6	403.8	4.4	396.2	431.0	8.8	-9.6	-27.2
Spain	1295.7	1531.7	18.2	2031.1	3107.8	53.0	-735.4	-1576.1
Sweden	355.4	428.6	20.6	322.8	378.3	17.2	32.6	50.3
United Kingdom	1156.2	1272.3	10.0	1174.1	930.2	-20.8	-17.9	342.1
Not specified	336.7	324.9	-3.5	203.6	165.4	-18.8	133.1	159.5

<sup>1</sup> Partner country:

- In case of exports (or dispatches) is the country (or Member State) of final destination of the goods.
- In case of imports (or arrivals) is the country (or Member State) of consignment of the goods.

<sup>2</sup> Data are preliminary as of 13-th of March 2018.

Table 3

Exports, imports and trade balance by groups of countries and main partner countries<sup>1</sup> of Bulgaria in 2016 and 2017<sup>2</sup>

(Continued)

Countries and groups of countries	Exports - FOB			Imports - CIF			Trade balance - FOB/CIF	
	2016	2017	Change compared to the same period of the previous year - %	2016	2017	Change compared to the same period of the previous year - %	2016	2017
	Million BGN			Million BGN			Million BGN	
<b>Non EU countries</b>	<b>16028.7</b>	<b>17727.8</b>	<b>10.6</b>	<b>17216.9</b>	<b>21358.5</b>	<b>24.1</b>	<b>-1188.2</b>	<b>-3630.7</b>
<b>CIS<sup>3</sup></b>	<b>1334.7</b>	<b>2021.3</b>	<b>51.4</b>	<b>5610.4</b>	<b>7188.2</b>	<b>28.1</b>	<b>-4275.7</b>	<b>-5166.9</b>
of which:								
Kazakhstan	36.9	44.1	19.5	33.6	27.3	-18.8	3.3	16.8
Russian Federation	765.3	1398.6	82.8	4570.0	6051.1	32.4	-3804.7	-4652.5
Ukraine	278.5	271.3	-2.6	801.5	896.8	11.9	-523.0	-625.5
<b>OECD<sup>4</sup></b>	<b>5378.2</b>	<b>5602.1</b>	<b>4.2</b>	<b>4774.8</b>	<b>5397.5</b>	<b>13.0</b>	<b>603.4</b>	<b>204.6</b>
of which:								
Canada	96.0	78.1	-18.6	94.3	122.8	30.2	1.7	-44.7
Israel	172.7	143.4	-17.0	99.0	99.6	0.6	73.7	43.8
Japan	80.0	78.0	-2.5	186.0	205.9	10.7	-106.0	-127.9
Korea, Republic of	160.8	82.3	-48.8	218.1	222.2	1.9	-57.3	-139.9
Turkey	3694.9	4064.1	10.0	3179.5	3728.3	17.3	515.4	335.8
United States	693.5	679.6	-2.0	408.3	454.5	11.3	285.2	225.1
<b>EFTA<sup>5</sup></b>	<b>338.0</b>	<b>334.4</b>	<b>-1.1</b>	<b>433.0</b>	<b>477.4</b>	<b>10.3</b>	<b>-95.0</b>	<b>-143.0</b>
of which:								
Norway	68.7	66.1	-3.8	45.3	60.0	32.5	23.4	6.1
Switzerland	266.5	265.5	-0.4	384.2	414.4	7.9	-117.7	-148.9

<sup>1</sup> Partner country:

- In case of exports (or dispatches) is the country (or Member State) of final destination of the goods.
- In case of imports (or arrivals) is the country (or Member State) of consignment of the goods.

<sup>2</sup> Data are preliminary as of 13-th of March 2018.

<sup>3</sup> CIS includes: Azerbaijan; Armenia; Belarus; Kazakhstan; Kyrgyz Republic; Moldova, Republic of; Russian Federation; Tajikistan; Turkmenistan; Uzbekistan and Ukraine.

<sup>4</sup> OECD includes: Australia; Virgin Islands (US); United States; Iceland; Canada; Mexico; New Zealand; Norway; Korea, Republic of; Turkey; Switzerland; Japan; Israel and Chile.

<sup>5</sup> EFTA includes: Norway; Switzerland; Iceland and Liechtenstein.

Table 3

**Exports, imports and trade balance by groups of countries and main partner countries<sup>1</sup> of Bulgaria in 2016 and 2017<sup>2</sup>**

(Continued and end)

Countries and groups of countries	Exports - FOB			Imports - CIF			Trade balance - FOB/CIF	
	2016	2017	Change compared to the same period of the previous year - %	2016	2017	Change compared to the same period of the previous year - %	2016	2017
	Million BGN			Million BGN			Million BGN	
<b>Countries not included in the upper groups</b>								
Albania	127.2	152.1	19.6	31.1	35.5	14.1	96.1	116.6
Bosnia and Herzegovina	130.4	132.6	1.7	84.9	77.6	-8.6	45.5	55.0
Brazil	50.7	48.0	-5.3	50.2	38.1	-24.1	0.5	9.9
China	914.5	1246.1	36.3	2034.9	2168.6	6.6	-1120.4	-922.5
Egypt	567.2	715.7	26.2	709.7	1094.2	54.2	-142.5	-378.5
Former Yugoslav Republic of Macedonia	769.1	798.7	3.8	505.2	617.0	22.1	263.9	181.7
Georgia	323.1	278.3	-13.9	280.7	578.4	106.1	42.4	-300.1
India	202.7	194.9	-3.8	238.9	274.0	14.7	-36.2	-79.1
Indonesia	67.0	42.9	-36.0	71.8	92.9	29.4	-4.8	-50.0
Iran, Islamic Republic of	134.0	103.6	-22.7	49.1	105.6	115.1	84.9	-2.0
Peru	15.6	18.6	19.2	47.3	47.7	0.8	-31.7	-29.1
Serbia	743.4	920.2	23.8	761.7	1183.9	55.4	-18.3	-263.7
Singapore	355.8	357.9	0.6	54.8	68.8	25.5	301.0	289.1
South Africa	134.8	116.3	-13.7	35.7	59.0	65.3	99.1	57.3
Syrian Arab Republic	35.7	38.8	8.7	1.7	0.6	-64.7	34.0	38.2
Taiwan	50.2	48.4	-3.6	219.7	197.9	-9.9	-169.5	-149.5
United Arab Emirates	457.4	304.7	-33.4	41.6	53.7	29.1	415.8	251.0
Viet Nam	175.6	48.8	-72.2	80.6	85.3	5.8	95.0	-36.5

<sup>1</sup> Partner country:

- In case of exports (or dispatches) is the country (or Member State) of final destination of the goods.
- In case of imports (or arrivals) is the country (or Member State) of consignment of the goods.

<sup>2</sup> Data are preliminary as of 13-th of March 2018.



Exports, imports and trade balance of Bulgaria by sections of SITC, rev. 4  
in 2016 and 2017<sup>1</sup>

Sections by SITC	Exports - FOB			Imports - CIF			Trade balance - FOB/CIF	
	2016	2017	Change compared to the same period of the previous year - %	2016	2017	Change compared to the same period of the previous year - %	2016	2017
	Million BGN			Million BGN			Million BGN	
<b>Total</b>	<b>47186.3</b>	<b>52246.5</b>	<b>10.7</b>	<b>51206.2</b>	<b>59153.2</b>	<b>15.5</b>	<b>-4019.9</b>	<b>-6906.7</b>
<b>of which EU</b>	<b>31157.6</b>	<b>34518.7</b>	<b>10.8</b>	<b>33989.3</b>	<b>37794.7</b>	<b>11.2</b>	<b>-2831.7</b>	<b>-3276.0</b>
Food and live animals	5399.5	5508.8	2.0	4149.8	4615.6	11.2	1249.7	893.2
of which EU	3746.5	4131.3	10.3	3315.4	3779.9	14.0	431.1	351.4
Beverages and tobacco	810.9	703.5	-13.2	786.2	807.5	2.7	24.7	-104.0
of which EU	368.8	314.2	-14.8	640.4	643.1	0.4	-271.6	-328.9
Crude materials, inedible (except fuel)	3134.3	3279.8	4.6	3696.8	5331.5	44.2	-562.5	-2051.7
of which EU	2108.6	2161.7	2.5	2129.7	3101.7	45.6	-21.1	-940.0
Mineral fuel, lubricants and related materials	4275.4	4201.4	-1.7	6377.6	8375.6	31.3	-2102.2	-4174.2
of which EU	1195.5	1363.2	14.0	1340.2	1797.8	34.1	-144.7	-434.6
Animals and vegetable oils, fats and waxes	483.4	579.7	19.9	181.7	194.2	6.9	301.7	385.5
of which EU	314.3	409.4	30.3	132.1	124.7	-5.6	182.2	284.7
Chemical and related products n.e.c.	4732.5	5238.3	10.7	7609.5	8409.8	10.5	-2877.0	-3171.5
of which EU	3140.5	3403.9	8.4	6005.4	6572.1	9.4	-2864.9	-3168.2
Manufactured goods classified chiefly by material	9595.8	12431.9	29.6	9177.5	10096.3	10.0	418.3	2335.6
of which EU	6617.5	8199.8	23.9	5826.8	5862.6	0.6	790.7	2337.2
Machinery and transport equipment	10163.4	11226.9	10.5	14319.5	16000.1	11.7	-4156.1	-4773.2
of which EU	7383.9	8289.0	12.3	11102.6	12141.1	9.4	-3718.7	-3852.1
Miscellaneous manufactured articles	8466.4	8933.7	5.5	4608.4	5005.4	8.6	3858.0	3928.3
of which EU	6195.4	6135.7	-1.0	3243.3	3490.2	7.6	2952.1	2645.5
Commodities and transactions n.e.c.	124.7	142.5	14.3	299.2	317.2	6.0	-174.5	-174.7
of which EU	86.6	110.5	27.6	253.4	281.5	11.1	-166.8	-171.0

<sup>1</sup>Data are preliminary as of 13-th of March 2018.