

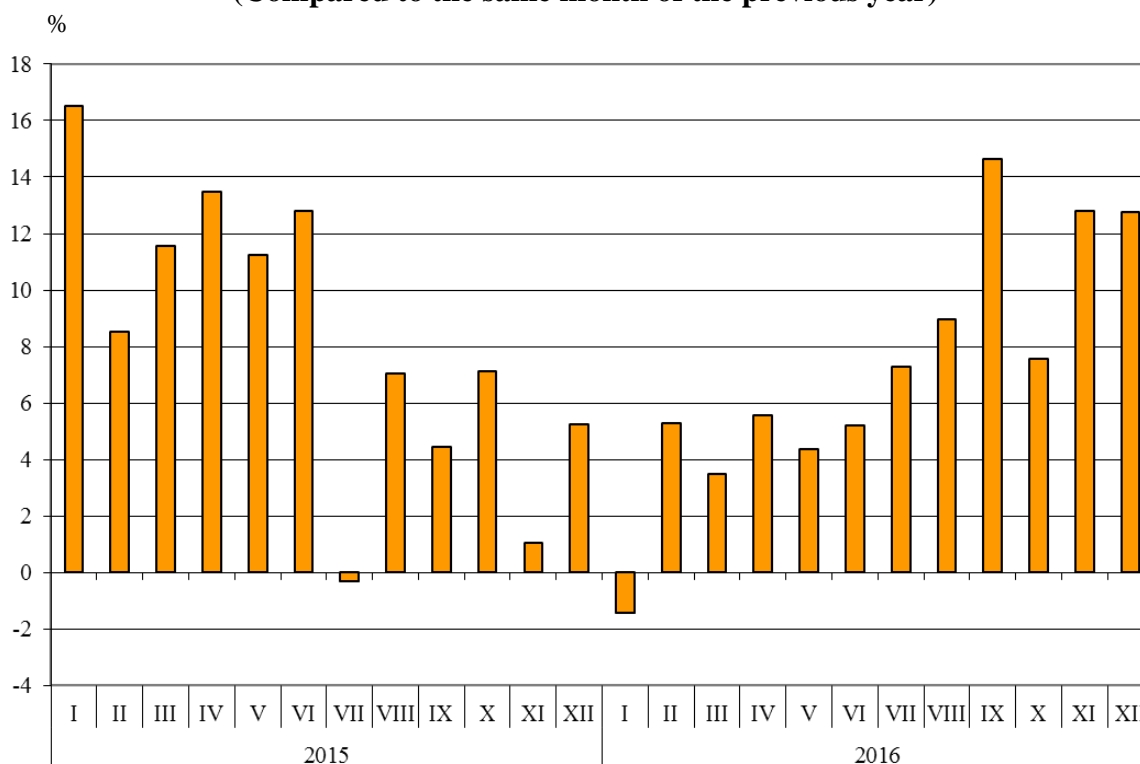


## BULGARIAN TRADE WITH EU IN 2016 (PRELIMINARY DATA)

In **2016** Bulgarian **exports to the EU** grew by 7.2% in comparison with 2015 and amounted to 31 153.1 Million BGN (Annex, Table 1 and 2). Main trade partners of Bulgaria were Germany, Italy, Romania, Greece and France which accounted for 63.8% of the exports to the EU Member States (Annex, Table 3).

In **December 2016** the exports to the EU increased by 12.8% compared to the corresponding month of the previous year and added up to 2 439.9 Million BGN.

**Figure 1. Nominal value<sup>1</sup> change of exports of Bulgaria to EU in the period 2015 - 2016  
(Compared to the same month of the previous year)**



In **2016** in comparison with 2015 the largest growths in the exports of Bulgaria to the EU distributed according to the **Standard International Trade Classification** (Annex, Table 4) were recorded in the sections 'Beverages and tobacco' (27.8%) and 'Chemical and related products n.e.c.' (21.9%). The most notable fall was recorded in section 'Mineral fuel, lubricants and related materials' (13.8%).

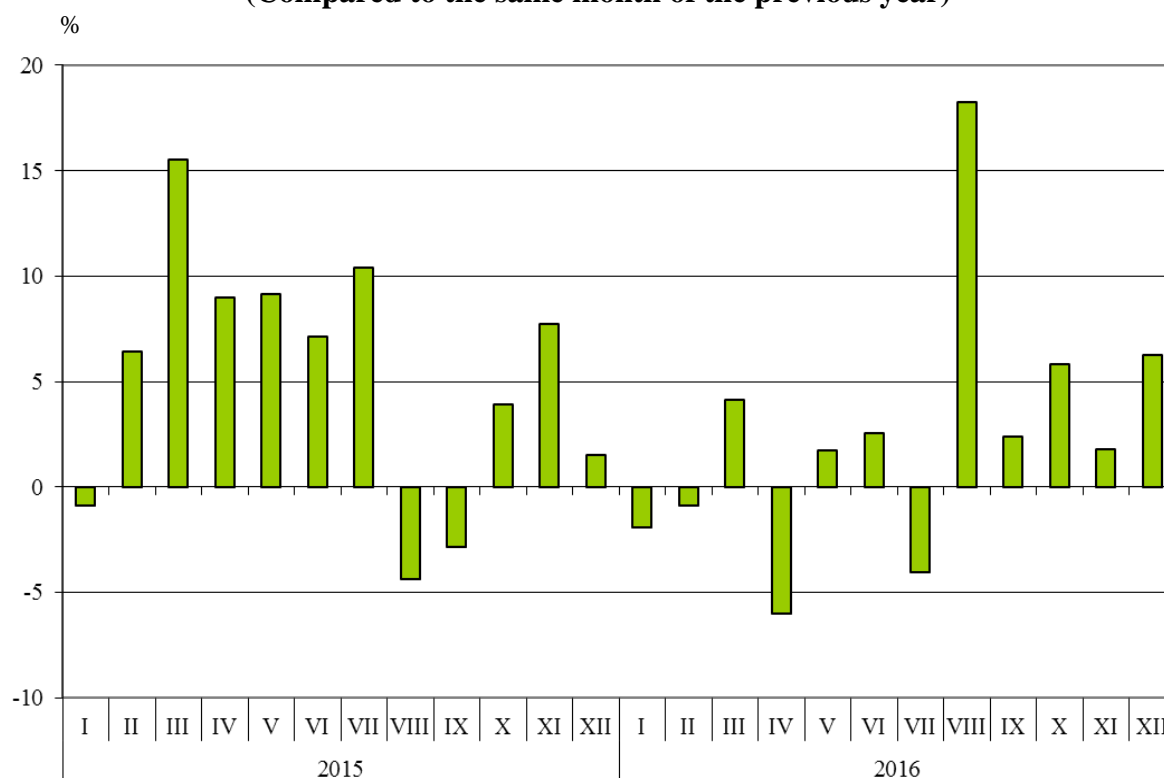
<sup>1</sup> Value changes at current prices.



Bulgarian imports from the EU in 2016 increased by 2.4% compared to the previous year and reached 33 938.5 Million BGN at CIF prices (Annex, Tables 1 and 2). The largest amounts were reported for the goods imported from Germany, Italy, Romania, Greece and Poland (Annex, Table 3).

In December 2016 the Bulgarian imports from the EU Member States grew by 6.3% in comparison with December 2015 and amounted to 3 045.2 Million BGN.

**Figure 2. Nominal value<sup>1</sup> change of imports of Bulgaria from EU in the period 2015 - 2016  
(Compared to the same month of the previous year)**



In 2016 compared to 2015 the largest growth in imports from the EU distributed according to the **Standard International Trade Classification** was reported in the section 'Beverages and tobacco' (9.3%) while the most notable fall was observed in section 'Crude materials, inedible (except fuel)'<sup>2</sup> (14.9%).

The **foreign trade balance** of Bulgaria (export FOB - import CIF) **with the EU** in 2016 was negative and added up to 2 785.4 Million BGN (Annex, Table 1). At FOB/FOB prices (after elimination of transport and insurance costs on imports) the trade balance was also negative and amounted to 1 187.7 Million BGN.

<sup>1</sup> Value changes at current prices.

<sup>2</sup> The section includes the following divisions: raw hides, skins and furskins; oil-seeds and oleaginous fruits; crude rubber; cork and wood; pulp and waste paper; textile fibres and their wastes; crude fertilizers and crude minerals; metalliferous ores and metal scrap; crude animal and vegetable materials, n.e.c.

Annex

Table 1

Exports, imports and trade balance of Bulgaria in 2015 and 2016<sup>1</sup> by months

(Million BGN)

Months/Periods	Exports - FOB			Imports - CIF			Imports - FOB <sup>2</sup>			Trade balance - FOB/CIF			Trade balance - FOB/FOB <sup>2</sup>		
	Total	EU	Non EU	Total	EU	Non EU	Total	EU	Non EU	Total	EU	Non EU	Total	EU	Non EU
I.2015	3404.9	2296.0	1108.9	3767.8	2312.0	1455.8	3579.5	2199.6	1379.9	-362.9	-16.0	-346.9	-174.6	96.4	-271.0
II.2015	3427.4	2171.8	1255.6	4104.7	2624.7	1480.0	3904.3	2499.7	1404.6	-677.3	-452.9	-224.4	-476.9	-327.9	-149.0
III.2015	3971.6	2422.7	1548.9	4447.0	2886.1	1560.9	4239.8	2753.7	1486.1	-475.4	-463.4	-12.0	-268.2	-331.0	62.8
<b>I - III.2015</b>	<b>10803.9</b>	<b>6890.5</b>	<b>3913.4</b>	<b>12319.5</b>	<b>7822.8</b>	<b>4496.7</b>	<b>11723.6</b>	<b>7453.0</b>	<b>4270.6</b>	<b>-1515.6</b>	<b>-932.3</b>	<b>-583.3</b>	<b>-919.7</b>	<b>-562.5</b>	<b>-357.2</b>
IV.2015	3912.2	2403.4	1508.8	4537.2	2866.8	1670.4	4313.3	2728.0	1585.3	-625.0	-463.4	-161.6	-401.1	-324.6	-76.5
V.2015	3755.0	2297.2	1457.8	4185.7	2583.3	1602.4	3984.9	2464.5	1520.4	-430.7	-286.1	-144.6	-229.9	-167.3	-62.6
VI.2015	4022.8	2562.3	1460.5	4423.1	2830.3	1592.8	4213.6	2699.1	1514.5	-400.3	-268.0	-132.3	-190.8	-136.8	-54.0
<b>IV - VI.2015</b>	<b>11690.0</b>	<b>7262.9</b>	<b>4427.1</b>	<b>13146.0</b>	<b>8280.4</b>	<b>4865.6</b>	<b>12511.8</b>	<b>7891.6</b>	<b>4620.2</b>	<b>-1456.0</b>	<b>-1017.5</b>	<b>-438.5</b>	<b>-821.8</b>	<b>-628.7</b>	<b>-193.1</b>
<b>I - VI.2015</b>	<b>22493.9</b>	<b>14153.4</b>	<b>8340.5</b>	<b>25465.5</b>	<b>16103.2</b>	<b>9362.3</b>	<b>24235.4</b>	<b>15344.6</b>	<b>8890.8</b>	<b>-2971.6</b>	<b>-1949.8</b>	<b>-1021.8</b>	<b>-1741.5</b>	<b>-1191.2</b>	<b>-550.3</b>
VII.2015	4105.0	2629.0	1476.0	4685.9	3047.1	1638.8	4455.2	2900.6	1554.6	-580.9	-418.1	-162.8	-350.2	-271.6	-78.6
VIII.2015	3682.9	2464.8	1218.1	3798.5	2356.9	1441.6	3617.8	2250.3	1367.5	-115.6	107.9	-223.5	65.1	214.5	-149.4
IX.2015	3623.7	2484.2	1139.5	4098.5	2674.4	1424.1	3905.4	2551.3	1354.1	-474.8	-190.2	-284.6	-281.7	-67.1	-214.6
<b>VII - IX.2015</b>	<b>11411.6</b>	<b>7578.0</b>	<b>3833.6</b>	<b>12582.9</b>	<b>8078.4</b>	<b>4504.5</b>	<b>11978.4</b>	<b>7702.2</b>	<b>4276.2</b>	<b>-1171.3</b>	<b>-500.4</b>	<b>-670.9</b>	<b>-566.8</b>	<b>-124.2</b>	<b>-442.6</b>
<b>I - IX.2015</b>	<b>33905.5</b>	<b>21731.4</b>	<b>12174.1</b>	<b>38048.4</b>	<b>24181.6</b>	<b>13866.8</b>	<b>36213.8</b>	<b>23046.8</b>	<b>13167.0</b>	<b>-4142.9</b>	<b>-2450.2</b>	<b>-1692.7</b>	<b>-2308.3</b>	<b>-1315.4</b>	<b>-992.9</b>
X.2015	3899.8	2688.2	1211.6	4613.8	3065.0	1548.8	4391.7	2918.4	1473.3	-714.0	-376.8	-337.2	-491.9	-230.2	-261.7
XI.2015	3690.6	2466.2	1224.4	4576.1	3045.0	1531.1	4331.4	2904.9	1426.5	-885.5	-578.8	-306.7	-640.8	-438.7	-202.1
XII.2015	3453.6	2163.6	1290.0	4310.7	2865.6	1445.1	4077.2	2732.6	1344.6	-857.1	-702.0	-155.1	-623.6	-569.0	-54.6
<b>X - XII.2015</b>	<b>11044.0</b>	<b>7318.0</b>	<b>3726.0</b>	<b>13500.6</b>	<b>8975.6</b>	<b>4525.0</b>	<b>12800.3</b>	<b>8555.9</b>	<b>4244.4</b>	<b>-2456.6</b>	<b>-1657.6</b>	<b>-799.0</b>	<b>-1756.3</b>	<b>-1237.9</b>	<b>-518.4</b>
<b>I - XII.2015</b>	<b>44949.5</b>	<b>29049.4</b>	<b>15900.1</b>	<b>51549.0</b>	<b>33157.2</b>	<b>18391.8</b>	<b>49014.1</b>	<b>31602.7</b>	<b>17411.4</b>	<b>-6599.5</b>	<b>-4107.8</b>	<b>-2491.7</b>	<b>-4064.6</b>	<b>-2553.3</b>	<b>-1511.3</b>

<sup>1</sup> Data are preliminary as of 13-th of March 2017.

<sup>2</sup> By data of BNB for the transport costs.

Table 1

Exports, imports and trade balance of Bulgaria in 2015 and 2016<sup>1</sup> by months

(Continued and end)

(Million BGN)

Months/Periods	Exports - FOB			Imports - CIF			Imports - FOB <sup>2</sup>			Trade balance - FOB/CIF			Trade balance - FOB/FOB <sup>2</sup>		
	Total	EU	Non EU	Total	EU	Non EU	Total	EU	Non EU	Total	EU	Non EU	Total	EU	Non EU
I.2016	3427.3	2263.0	1164.3	3471.9	2267.7	1204.2	3301.1	2154.8	1146.3	-44.6	-4.7	-39.9	126.2	108.2	18.0
II.2016	3481.7	2286.3	1195.4	3824.7	2601.5	1223.2	3644.8	2481.3	1163.5	-343.0	-315.2	-27.8	-163.1	-195.0	31.9
III.2016	3680.5	2507.4	1173.1	4217.0	3005.6	1211.4	4021.0	2864.8	1156.2	-536.5	-498.2	-38.3	-340.5	-357.4	16.9
<b>I - III.2016</b>	<b>10589.5</b>	<b>7056.7</b>	<b>3532.8</b>	<b>11513.6</b>	<b>7874.8</b>	<b>3638.8</b>	<b>10966.9</b>	<b>7500.9</b>	<b>3466.0</b>	<b>-924.1</b>	<b>-818.1</b>	<b>-106.0</b>	<b>-377.4</b>	<b>-444.2</b>	<b>66.8</b>
IV.2016	3635.5	2536.7	1098.8	4017.5	2694.4	1323.1	3832.2	2573.9	1258.3	-382.0	-157.7	-224.3	-196.7	-37.2	-159.5
V.2016	3517.6	2397.4	1120.2	4084.3	2628.6	1455.7	3887.8	2505.8	1382.0	-566.7	-231.2	-335.5	-370.2	-108.4	-261.8
VI.2016	3958.2	2695.2	1263.0	4312.9	2902.9	1410.0	4109.8	2767.6	1342.2	-354.7	-207.7	-147.0	-151.6	-72.4	-79.2
<b>IV - VI.2016</b>	<b>11111.3</b>	<b>7629.3</b>	<b>3482.0</b>	<b>12414.7</b>	<b>8225.9</b>	<b>4188.8</b>	<b>11829.8</b>	<b>7847.3</b>	<b>3982.5</b>	<b>-1303.4</b>	<b>-596.6</b>	<b>-706.8</b>	<b>-718.5</b>	<b>-218.0</b>	<b>-500.5</b>
<b>I - VI.2016</b>	<b>21700.8</b>	<b>14686.0</b>	<b>7014.8</b>	<b>23928.3</b>	<b>16100.7</b>	<b>7827.6</b>	<b>22796.7</b>	<b>15348.2</b>	<b>7448.5</b>	<b>-2227.5</b>	<b>-1414.7</b>	<b>-812.8</b>	<b>-1095.9</b>	<b>-662.2</b>	<b>-433.7</b>
VII.2016	4082.7	2820.8	1261.9	4340.3	2924.2	1416.1	4131.3	2787.1	1344.2	-257.6	-103.4	-154.2	-48.6	33.7	-82.3
VIII.2016	3914.1	2685.3	1228.8	4434.2	2786.5	1647.7	4214.5	2654.1	1560.4	-520.1	-101.2	-418.9	-300.4	31.2	-331.6
IX.2016	4050.6	2847.7	1202.9	4173.0	2738.7	1434.3	3974.0	2612.2	1361.8	-122.4	109.0	-231.4	76.6	235.5	-158.9
<b>VII - IX.2016</b>	<b>12047.4</b>	<b>8353.8</b>	<b>3693.6</b>	<b>12947.5</b>	<b>8449.4</b>	<b>4498.1</b>	<b>12319.8</b>	<b>8053.4</b>	<b>4266.4</b>	<b>-900.1</b>	<b>-95.6</b>	<b>-804.5</b>	<b>-272.4</b>	<b>300.4</b>	<b>-572.8</b>
<b>I - IX.2016</b>	<b>33748.2</b>	<b>23039.8</b>	<b>10708.4</b>	<b>36875.8</b>	<b>24550.1</b>	<b>12325.7</b>	<b>35116.5</b>	<b>23401.6</b>	<b>11714.9</b>	<b>-3127.6</b>	<b>-1510.3</b>	<b>-1617.3</b>	<b>-1368.3</b>	<b>-361.8</b>	<b>-1006.5</b>
X.2016	4156.2	2891.4	1264.8	4829.7	3244.1	1585.6	4593.1	3083.1	1510.0	-673.5	-352.7	-320.8	-436.9	-191.7	-245.2
XI.2016	4231.6	2782.0	1449.6	4704.9	3099.1	1605.8	4481.5	2955.4	1526.1	-473.3	-317.1	-156.2	-249.9	-173.4	-76.5
XII.2016	3974.3	2439.9	1534.4	4617.5	3045.2	1572.3	4397.7	2900.7	1497.0	-643.2	-605.3	-37.9	-423.4	-460.8	37.4
<b>X - XII.2016</b>	<b>12362.1</b>	<b>8113.3</b>	<b>4248.8</b>	<b>14152.1</b>	<b>9388.4</b>	<b>4763.7</b>	<b>13472.3</b>	<b>8939.2</b>	<b>4533.1</b>	<b>-1790.0</b>	<b>-1275.1</b>	<b>-514.9</b>	<b>-1110.2</b>	<b>-825.9</b>	<b>-284.3</b>
<b>I - XII.2016</b>	<b>46110.3</b>	<b>31153.1</b>	<b>14957.2</b>	<b>51027.9</b>	<b>33938.5</b>	<b>17089.4</b>	<b>48588.8</b>	<b>32340.8</b>	<b>16248.0</b>	<b>-4917.6</b>	<b>-2785.4</b>	<b>-2132.2</b>	<b>-2478.5</b>	<b>-1187.7</b>	<b>-1290.8</b>

<sup>1</sup> Data are preliminary as of 13-th of March 2017.

<sup>2</sup> By data of BNB for the transport costs.

Table 2

Value changes of exports and imports of Bulgaria in 2016<sup>1</sup> compared to the same period of the previous year

(Per cent)

Months/Periods	Exports - FOB			Imports - CIF			Imports - FOB		
	Total	EU	Non EU	Total	EU	Non EU	Total	EU	Non EU
I	0.7	-1.4	5.0	-7.9	-1.9	-17.3	-7.8	-2.0	-16.9
II	1.6	5.3	-4.8	-6.8	-0.9	-17.4	-6.6	-0.7	-17.2
III	-7.3	3.5	-24.3	-5.2	4.1	-22.4	-5.2	4.0	-22.2
<b>I - III</b>	<b>-2.0</b>	<b>2.4</b>	<b>-9.7</b>	<b>-6.5</b>	<b>0.7</b>	<b>-19.1</b>	<b>-6.5</b>	<b>0.6</b>	<b>-18.8</b>
IV	-7.1	5.5	-27.2	-11.5	-6.0	-20.8	-11.2	-5.6	-20.6
V	-6.3	4.4	-23.2	-2.4	1.8	-9.2	-2.4	1.7	-9.1
VI	-1.6	5.2	-13.5	-2.5	2.6	-11.5	-2.5	2.5	-11.4
<b>IV - VI</b>	<b>-5.0</b>	<b>5.0</b>	<b>-21.3</b>	<b>-5.6</b>	<b>-0.7</b>	<b>-13.9</b>	<b>-5.5</b>	<b>-0.6</b>	<b>-13.8</b>
<b>I - VI</b>	<b>-3.5</b>	<b>3.8</b>	<b>-15.9</b>	<b>-6.0</b>	<b>0.0</b>	<b>-16.4</b>	<b>-5.9</b>	<b>0.0</b>	<b>-16.2</b>
VII	-0.5	7.3	-14.5	-7.4	-4.0	-13.6	-7.3	-3.9	-13.5
VIII	6.3	8.9	0.9	16.7	18.2	14.3	16.5	17.9	14.1
IX	11.8	14.6	5.6	1.8	2.4	0.7	1.8	2.4	0.6
<b>VII - IX</b>	<b>5.6</b>	<b>10.2</b>	<b>-3.7</b>	<b>2.9</b>	<b>4.6</b>	<b>-0.1</b>	<b>2.9</b>	<b>4.6</b>	<b>-0.2</b>
<b>I - IX</b>	<b>-0.5</b>	<b>6.0</b>	<b>-12.0</b>	<b>-3.1</b>	<b>1.5</b>	<b>-11.1</b>	<b>-3.0</b>	<b>1.5</b>	<b>-11.0</b>
X	6.6	7.6	4.4	4.7	5.8	2.4	4.6	5.6	2.5
XI	14.7	12.8	18.4	2.8	1.8	4.9	3.5	1.7	7.0
XII	15.1	12.8	18.9	7.1	6.3	8.8	7.9	6.2	11.3
<b>X - XII</b>	<b>11.9</b>	<b>10.9</b>	<b>14.0</b>	<b>4.8</b>	<b>4.6</b>	<b>5.3</b>	<b>5.2</b>	<b>4.5</b>	<b>6.8</b>
<b>I - XII</b>	<b>2.6</b>	<b>7.2</b>	<b>-5.9</b>	<b>-1.0</b>	<b>2.4</b>	<b>-7.1</b>	<b>-0.9</b>	<b>2.3</b>	<b>-6.7</b>

<sup>1</sup> Data are preliminary as of 13-th March 2017.

Table 3

Exports, imports and trade balance by groups of countries and main partner countries<sup>1</sup> of Bulgaria in 2015 and 2016<sup>2</sup>

Countries and groups of countries	Exports - FOB			Imports - CIF			Trade balance - FOB/CIF	
	2015	2016	Change compared to the same period of the previous year - %	2015	2016	Change compared to the same period of the previous year - %	2015	2016
	Million BGN			Million BGN			Million BGN	
<b>Total</b>	<b>44949.5</b>	<b>46110.3</b>	<b>2.6</b>	<b>51549.0</b>	<b>51027.9</b>	<b>-1.0</b>	<b>-6599.5</b>	<b>-4917.6</b>
<b>EU</b>	<b>29049.4</b>	<b>31153.1</b>	<b>7.2</b>	<b>33157.2</b>	<b>33938.5</b>	<b>2.4</b>	<b>-4107.8</b>	<b>-2785.4</b>
Austria	804.0	897.1	11.6	1389.9	1412.2	1.6	-585.9	-515.1
Belgium	1658.0	1264.0	-23.8	1186.5	1188.4	0.2	471.5	75.6
Croatia	187.1	218.8	16.9	116.5	122.9	5.5	70.6	95.9
Cyprus	299.5	160.4	-46.4	79.6	57.9	-27.3	219.9	102.5
Czech Republic	769.8	787.1	2.2	1095.2	1086.8	-0.8	-325.4	-299.7
Denmark	245.5	283.4	15.4	243.6	233.9	-4.0	1.9	49.5
Estonia	40.7	42.7	4.9	22.8	32.3	41.7	17.9	10.4
Finland	117.4	80.8	-31.2	118.4	132.1	11.6	-1.0	-51.3
France	1908.8	2079.5	8.9	1629.8	1611.3	-1.1	279.0	468.2
Germany	5659.6	6285.7	11.1	6640.6	6694.2	0.8	-981.0	-408.5
Greece	2954.7	3227.8	9.2	2479.7	2461.0	-0.8	475.0	766.8
Hungary	685.4	764.1	11.5	1909.4	1950.7	2.2	-1224.0	-1186.6
Ireland	58.5	66.5	13.7	159.1	192.1	20.7	-100.6	-125.6
Italy	4180.2	4244.6	1.5	3902.5	4043.6	3.6	277.7	201.0
Latvia	50.0	53.5	7.0	56.4	69.2	22.7	-6.4	-15.7
Lithuania	97.4	112.0	15.0	86.1	99.4	15.4	11.3	12.6
Luxembourg	10.6	12.0	13.2	155.9	170.8	9.6	-145.3	-158.8
Malta	100.9	81.2	-19.5	19.8	33.5	69.2	81.1	47.7
Netherlands	1057.1	1248.4	18.1	1727.3	1868.5	8.2	-670.2	-620.1
Poland	1035.0	1145.7	10.7	1608.7	2066.0	28.4	-573.7	-920.3
Portugal	185.2	200.7	8.4	109.2	93.3	-14.6	76.0	107.4
Romania	3691.8	4046.9	9.6	3494.3	3545.7	1.5	197.5	501.2
Slovakia	330.7	321.8	-2.7	741.0	686.6	-7.3	-410.3	-364.8
Slovenia	360.7	386.6	7.2	341.3	396.1	16.1	19.4	-9.5
Spain	1038.3	1295.8	24.8	2362.9	1989.5	-15.8	-1324.6	-693.7
Sweden	297.3	355.4	19.5	318.0	322.7	1.5	-20.7	32.7
United Kingdom	1146.4	1160.1	1.2	942.4	1174.0	24.6	204.0	-13.9
Not specified	78.8	330.5	319.4	220.3	203.8	-7.5	-141.5	126.7

<sup>1</sup> Partner country:

- In case of exports (or dispatches) is the country (or Member State) of final destination of the goods.

- In case of imports (or arrivals) is the country (or Member State) of consignment of the goods.

<sup>2</sup> Data are preliminary as of 13-th of March 2017.



Table 3

Exports, imports and trade balance by groups of countries and main partner countries<sup>1</sup> of Bulgaria in 2015 and 2016<sup>2</sup>

(Continued)

Countries and groups of countries	Exports - FOB			Imports - CIF			Trade balance - FOB/CIF	
	2015	2016	Change compared to the same period of the previous year - %	2015	2016	Change compared to the same period of the previous year - %	2015	2016
	Million BGN			Million BGN			Million BGN	
<b>Non EU countries</b>	<b>15900.1</b>	<b>14957.2</b>	<b>-5.9</b>	<b>18391.8</b>	<b>17089.4</b>	<b>-7.1</b>	<b>-2491.7</b>	<b>-2132.2</b>
<b>CIS<sup>3</sup></b>	<b>1431.1</b>	<b>1018.4</b>	<b>-28.8</b>	<b>7308.1</b>	<b>5599.1</b>	<b>-23.4</b>	<b>-5877.0</b>	<b>-4580.7</b>
of which:								
Kazakhstan	42.9	29.8	-30.5	48.8	33.4	-31.6	-5.9	-3.6
Russian Federation	783.6	672.9	-14.1	6201.9	4559.5	-26.5	-5418.3	-3886.6
Ukraine	313.9	144.8	-53.9	916.2	801.3	-12.5	-602.3	-656.5
<b>OECD<sup>4</sup></b>	<b>5466.7</b>	<b>4943.4</b>	<b>-9.6</b>	<b>4576.3</b>	<b>4755.3</b>	<b>3.9</b>	<b>890.4</b>	<b>188.1</b>
of which:								
Canada	80.9	68.1	-15.8	54.6	92.3	69.0	26.3	-24.2
Israel	189.2	146.0	-22.8	73.3	97.8	33.4	115.9	48.2
Japan	75.7	71.3	-5.8	165.3	185.0	11.9	-89.6	-113.7
Korea, Republic of	104.4	137.7	31.9	165.6	217.4	31.3	-61.2	-79.7
Turkey	3923.8	3694.2	-5.9	2924.9	3173.6	8.5	998.9	520.6
United States	718.2	570.4	-20.6	474.7	404.3	-14.8	243.5	166.1
<b>EFTA<sup>5</sup></b>	<b>224.2</b>	<b>159.6</b>	<b>-28.8</b>	<b>413.5</b>	<b>426.1</b>	<b>3.0</b>	<b>-189.3</b>	<b>-266.5</b>
of which:								
Norway	47.4	27.1	-42.8	32.6	45.3	39.0	14.8	-18.2
Switzerland	174.7	131.1	-25.0	377.3	377.4	0.0	-202.6	-246.3

<sup>1</sup> Partner country:

- In case of exports (or dispatches) is the country (or Member State) of final destination of the goods.
- In case of imports (or arrivals) is the country (or Member State) of consignment of the goods.

<sup>2</sup> Data are preliminary as of 13-th of March 2017.

<sup>3</sup> CIS includes: Azerbaijan; Armenia; Belarus; Kazakhstan; Kyrgyz Republic; Moldova, Republic of; Russian Federation; Tajikistan; Turkmenistan; Uzbekistan and Ukraine.

<sup>4</sup> OECD includes: Australia; Virgin Islands (US); United States; Iceland; Canada; Mexico; New Zealand; Norway; Korea, Republic of; Turkey; Switzerland; Japan; Israel and Chile.

<sup>5</sup> EFTA includes: Norway; Switzerland; Iceland and Liechtenstein.



Table 3

**Exports, imports and trade balance by groups of countries and main partner countries<sup>1</sup> of Bulgaria in 2015 and 2016<sup>2</sup>**

(Continued and end)

Countries and groups of countries	Exports - FOB			Imports - CIF			Trade balance - FOB/CIF	
	2015	2016	Change compared to the same period of the previous year - %	2015	2016	Change compared to the same period of the previous year - %	2015	2016
	Million BGN			Million BGN			Million BGN	
<b>Countries not included in the upper groups</b>								
Albania	111.6	104.0	-6.8	38.0	29.9	-21.3	73.6	74.1
Bosnia and Herzegovina	118.1	133.8	13.3	58.9	80.8	37.2	59.2	53.0
Brazil	45.4	44.1	-2.9	59.3	50.2	-15.3	-13.9	-6.1
China	1049.5	850.5	-19.0	1894.6	2026.9	7.0	-845.1	-1176.4
Egypt	738.3	551.8	-25.3	201.4	700.9	248.0	536.9	-149.1
The former Yugoslav Republic of Macedonia	754.6	770.7	2.1	507.7	479.8	-5.5	246.9	290.9
Georgia	316.4	325.1	2.7	446.9	279.9	-37.4	-130.5	45.2
India	109.9	141.6	28.8	275.5	238.9	-13.3	-165.6	-97.3
Indonesia	99.1	51.6	-47.9	72.0	70.9	-1.5	27.1	-19.3
Iran, Islamic Republic of	244.5	133.5	-45.4	28.1	48.7	73.3	216.4	84.8
Peru	5.9	10.6	79.7	40.9	45.8	12.0	-35.0	-35.2
Serbia	820.0	765.7	-6.6	696.8	744.0	6.8	123.2	21.7
Singapore	664.5	361.7	-45.6	54.7	54.7	0.0	609.8	307.0
South Africa	109.4	125.7	14.9	24.4	35.6	45.9	85.0	90.1
Syrian Arab Republic	46.2	35.0	-24.2	14.7	1.7	-88.4	31.5	33.3
Taiwan	41.4	33.4	-19.3	216.4	218.3	0.9	-175.0	-184.9
United Arab Emirates	416.7	433.3	4.0	138.2	41.9	-69.7	278.5	391.4
Viet Nam	70.7	164.4	132.5	89.3	79.1	-11.4	-18.6	85.3

<sup>1</sup> Partner country:

- In case of exports (or dispatches) is the country (or Member State) of final destination of the goods.
- In case of imports (or arrivals) is the country (or Member State) of consignment of the goods.

<sup>2</sup> Data are preliminary as of 13-th of March 2017.



Exports, imports and trade balance of Bulgaria by sections of SITC, rev. 4  
in 2015 and 2016<sup>1</sup>

Sections by SITC	Exports - FOB			Imports - CIF			Trade balance - FOB/CIF	
	2015	2016	Change compared to the same period of the previous year - %	2015	2016	Change compared to the same period of the previous year - %	2015	2016
	Million BGN			Million BGN			Million BGN	
<b>Total</b>	<b>44949.5</b>	<b>46110.3</b>	<b>2.6</b>	<b>51549.0</b>	<b>51027.9</b>	<b>-1.0</b>	<b>-6599.5</b>	<b>-4917.6</b>
<b>of which: EU</b>	<b>29049.4</b>	<b>31153.1</b>	<b>7.2</b>	<b>33157.2</b>	<b>33938.5</b>	<b>2.4</b>	<b>-4107.8</b>	<b>-2785.4</b>
Food and live animals	4857.3	5242.3	7.9	3980.9	4144.1	4.1	876.4	1098.2
of which: EU	3260.5	3745.9	14.9	3184.3	3314.3	4.1	76.2	431.6
Beverages and tobacco	823.9	790.1	-4.1	733.0	784.4	7.0	90.9	5.7
of which: EU	288.2	368.3	27.8	585.1	639.7	9.3	-296.9	-271.4
Crude materials, inedible (except fuel)	2953.8	3157.7	6.9	4230.3	3607.2	-14.7	-1276.5	-449.5
of which: EU	1850.8	2117.2	14.4	2453.2	2087.5	-14.9	-602.4	29.7
Mineral fuel, lubricants and related materials	4859.5	4271.0	-12.1	8042.6	6349.8	-21.0	-3183.1	-2078.8
of which: EU	1388.3	1197.2	-13.8	1448.9	1336.9	-7.7	-60.6	-139.7
Animals and vegetable oils, fats and waxes	471.7	480.8	1.9	177.9	181.7	2.1	293.8	299.1
of which: EU	323.1	314.2	-2.8	122.2	132.1	8.1	200.9	182.1
Chemical and related products n.e.c.	4437.3	4651.8	4.8	7238.4	7605.9	5.1	-2801.1	-2954.1
of which: EU	2576.5	3140.1	21.9	5533.0	6004.0	8.5	-2956.5	-2863.9
Manufactured goods classified chiefly by material	9968.6	9361.4	-6.1	8722.6	9161.1	5.0	1246.0	200.3
of which: EU	6859.5	6606.8	-3.7	5458.3	5825.5	6.7	1401.2	781.3
Machinery and transport equipment	9400.8	9794.4	4.2	14006.2	14297.4	2.1	-4605.4	-4503.0
of which: EU	6891.9	7381.8	7.1	11136.3	11102.8	-0.3	-4244.4	-3721.0
Miscellaneous manufactured articles	7058.2	8239.3	16.7	4137.9	4597.5	11.1	2920.3	3641.8
of which: EU	5522.7	6195.0	12.2	2986.9	3242.6	8.6	2535.8	2952.4
Commodities and transactions n.e.c.	118.4	121.5	2.6	279.2	298.8	7.0	-160.8	-177.3
of which: EU	87.9	86.6	-1.5	249.0	253.1	1.6	-161.1	-166.5

<sup>1</sup>Data are preliminary as of 13-th of March 2017.