

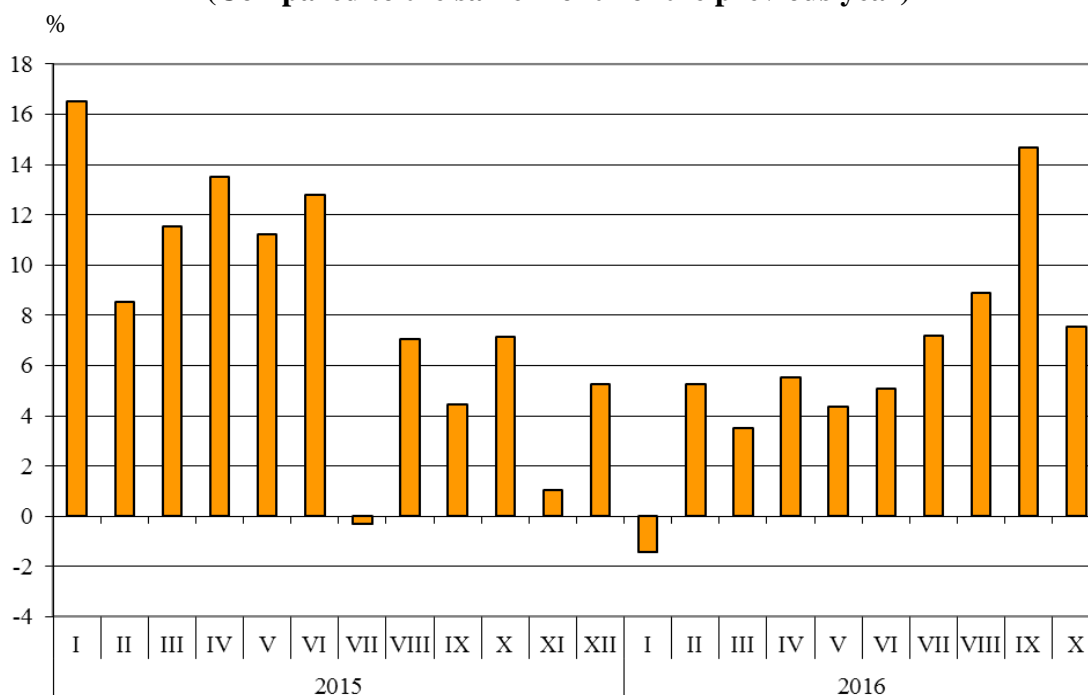


BULGARIAN TRADE WITH EU IN THE PERIOD JANUARY - OCTOBER 2016 (PRELIMINARY DATA)

In the period **January - October 2016** Bulgarian exports to the EU grew by 6.2% in comparison with the same period of 2015 and amounted to 25 925.6 Million BGN (Annex, Table 1 and 2). Main trade partners of Bulgaria were Germany, Italy, Romania, Greece and France which accounted for 64.2% of the exports to the EU Member States (Annex, Table 3).

In **October 2016** the exports to the EU increased by 7.5% compared to the corresponding month of the previous year and added up to 2 891.1 Million BGN.

**Figure 1. Nominal value¹ change of exports of Bulgaria to EU in the period 2015 - 2016
(Compared to the same month of the previous year)**



In the period **January - October 2016** in comparison with the same period of 2015 the largest growths in the exports of Bulgaria to the EU distributed according to the **Standard International Trade Classification** (Annex, Table 4) were recorded in the sections 'Beverages and tobacco' (27.8%) and 'Chemical and related products n.e.c.' (19.1%). The most notable fall was recorded in section 'Mineral fuel, lubricants and related materials' (18.7%).

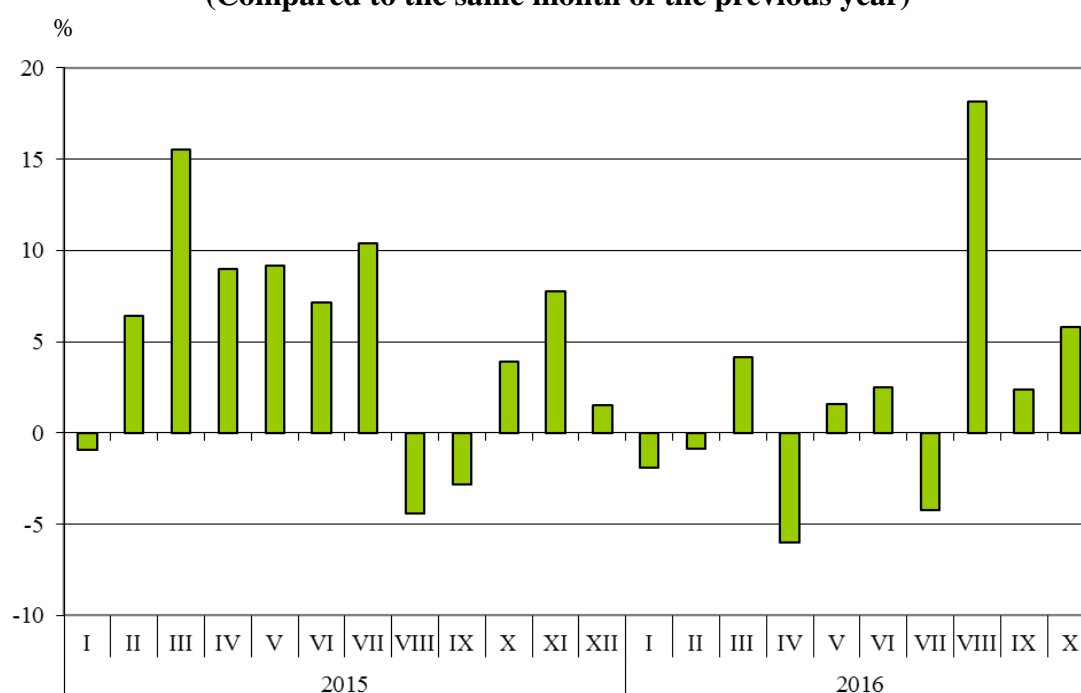
¹ Value changes at current prices.



Bulgarian imports from the EU in the period **January - October 2016** increased by 2.0% compared to the same period of the previous year and reached 27 779.6 Million BGN at CIF prices (Annex, Tables 1 and 2). The largest amounts were reported for the goods imported from Germany, Italy, Romania, Greece and Poland (Annex, Table 3).

In **October 2016** the Bulgarian imports from the EU Member States grew by 5.8% in comparison with October 2015 and amounted to 3 242.9 Million BGN.

Figure 2. Nominal value¹ change of imports of Bulgaria from EU in the period 2015 - 2016 (Compared to the same month of the previous year)



In the period **January - October 2016** compared to the corresponding period of 2015 the largest growth in imports from the EU distributed according to the **Standard International Trade Classification** was reported in the section ‘Beverages and tobacco’ (11.8%) while the most notable fall was observed in section ‘Crude materials, inedible (except fuel)’² (19.0%).

The **foreign trade balance** of Bulgaria (export FOB - import CIF) **with the EU** in the period January - October 2016 was negative and added up to 1 854.0 Million BGN (Annex, Table 1). At FOB/FOB prices (after elimination of transport and insurance costs on imports) the trade balance was also negative and amounted to 545.0 Million BGN.

¹ Value changes at current prices.

² The section includes the following divisions: raw hides, skins and furskins; oil-seeds and oleaginous fruits; crude rubber; cork and wood; pulp and waste paper; textile fibres and their wastes; crude fertilizers and crude minerals; metalliferous ores and metal scrap; crude animal and vegetable materials, n.e.c.

Annex

Exports, imports and trade balance of Bulgaria in the period January - October 2015 and 2016¹ by months

Table 1

(Million BGN)

Months/Periods	Exports - FOB			Imports - CIF			Imports - FOB ²			Trade balance - FOB/CIF			Trade balance - FOB/FOB ²		
	Total	EU	Non EU	Total	EU	Non EU	Total	EU	Non EU	Total	EU	Non EU	Total	EU	Non EU
I.2015	3404.9	2296.0	1108.9	3767.8	2312.0	1455.8	3579.5	2199.6	1379.9	-362.9	-16.0	-346.9	-174.6	96.4	-271.0
II.2015	3427.4	2171.8	1255.6	4104.7	2624.7	1480.0	3904.3	2499.7	1404.6	-677.3	-452.9	-224.4	-476.9	-327.9	-149.0
III.2015	3971.6	2422.7	1548.9	4447.0	2886.1	1560.9	4239.8	2753.7	1486.1	-475.4	-463.4	-12.0	-268.2	-331.0	62.8
I - III.2015	10803.9	6890.5	3913.4	12319.5	7822.8	4496.7	11723.6	7453.0	4270.6	-1515.6	-932.3	-583.3	-919.7	-562.5	-357.2
IV.2015	3912.2	2403.4	1508.8	4537.2	2866.8	1670.4	4313.3	2728.0	1585.3	-625.0	-463.4	-161.6	-401.1	-324.6	-76.5
V.2015	3755.0	2297.2	1457.8	4185.7	2583.3	1602.4	3984.9	2464.5	1520.4	-430.7	-286.1	-144.6	-229.9	-167.3	-62.6
VI.2015	4022.8	2562.3	1460.5	4423.1	2830.3	1592.8	4213.6	2699.1	1514.5	-400.3	-268.0	-132.3	-190.8	-136.8	-54.0
IV - VI.2015	11690.0	7262.9	4427.1	13146.0	8280.4	4865.6	12511.8	7891.6	4620.2	-1456.0	-1017.5	-438.5	-821.8	-628.7	-193.1
I - VI.2015	22493.9	14153.4	8340.5	25465.5	16103.2	9362.3	24235.4	15344.6	8890.8	-2971.6	-1949.8	-1021.8	-1741.5	-1191.2	-550.3
VII.2015	4105.0	2629.0	1476.0	4685.9	3047.1	1638.8	4455.2	2900.6	1554.6	-580.9	-418.1	-162.8	-350.2	-271.6	-78.6
VIII.2015	3682.9	2464.8	1218.1	3798.5	2356.9	1441.6	3617.8	2250.3	1367.5	-115.6	107.9	-223.5	65.1	214.5	-149.4
IX.2015	3623.7	2484.2	1139.5	4098.5	2674.4	1424.1	3905.4	2551.3	1354.1	-474.8	-190.2	-284.6	-281.7	-67.1	-214.6
VII - IX.2015	11411.6	7578.0	3833.6	12582.9	8078.4	4504.5	11978.4	7702.2	4276.2	-1171.3	-500.4	-670.9	-566.8	-124.2	-442.6
I - IX.2015	33905.5	21731.4	12174.1	38048.4	24181.6	13866.8	36213.8	23046.8	13167.0	-4142.9	-2450.2	-1692.7	-2308.3	-1315.4	-992.9
X.2015	3899.8	2688.2	1211.6	4613.8	3065.0	1548.8	4391.7	2918.4	1473.3	-714.0	-376.8	-337.2	-491.9	-230.2	-261.7
I - X.2015	37805.3	24419.6	13385.7	42662.2	27246.6	15415.6	40605.5	25965.2	14640.3	-4856.9	-2827.0	-2029.9	-2800.2	-1545.6	-1254.6
I.2016	3427.4	2263.1	1164.3	3472.1	2267.9	1204.2	3301.2	2154.9	1146.3	-44.7	-4.8	-39.9	126.2	108.2	18.0
II.2016	3481.6	2286.2	1195.4	3824.7	2601.5	1223.2	3644.8	2481.4	1163.4	-343.1	-315.3	-27.8	-163.2	-195.2	32.0
III.2016	3680.5	2507.4	1173.1	4217.1	3005.7	1211.4	4021.2	2865.0	1156.2	-536.6	-498.3	-38.3	-340.7	-357.6	16.9
I - III.2016	10589.5	7056.7	3532.8	11513.9	7875.1	3638.8	10967.2	7501.3	3465.9	-924.4	-818.4	-106.0	-377.7	-444.6	66.9
IV.2016	3635.1	2536.4	1098.7	4017.3	2694.2	1323.1	3832.0	2573.7	1258.3	-382.2	-157.8	-224.4	-196.9	-37.3	-159.6
V.2016	3517.3	2397.1	1120.2	4079.9	2624.2	1455.7	3883.5	2501.5	1382.0	-562.6	-227.1	-335.5	-366.2	-104.4	-261.8
VI.2016	3955.5	2692.5	1263.0	4311.0	2901.0	1410.0	4107.9	2765.7	1342.2	-355.5	-208.5	-147.0	-152.4	-73.2	-79.2
IV - VI.2016	11107.9	7626.0	3481.9	12408.2	8219.4	4188.8	11823.4	7840.9	3982.5	-1300.3	-593.4	-706.9	-715.5	-214.9	-500.6
I - VI.2016	21697.4	14682.7	7014.7	23922.1	16094.5	7827.6	22790.6	15342.2	7448.4	-2224.7	-1411.8	-812.9	-1093.2	-659.5	-433.7
VII.2016	4080.3	2818.4	1261.9	4334.9	2918.0	1416.9	4126.2	2781.2	1345.0	-254.6	-99.6	-155.0	-45.9	37.2	-83.1
VIII.2016	3913.2	2684.4	1228.8	4433.3	2785.6	1647.7	4213.7	2653.3	1560.4	-520.1	-101.2	-418.9	-300.5	31.1	-331.6
IX.2016	4051.9	2849.0	1202.9	4172.9	2738.6	1434.3	3973.8	2612.0	1361.8	-121.0	110.4	-231.4	78.1	237.0	-158.9
VII - IX.2016	12045.4	8351.8	3693.6	12941.1	8442.2	4498.9	12313.7	8046.5	4267.2	-895.7	-90.4	-805.3	-268.3	305.3	-573.6
I - IX.2016	33742.8	23034.5	10708.3	36863.2	24536.7	12326.5	35104.3	23388.7	11715.6	-3120.4	-1502.2	-1618.2	-1361.5	-354.2	-1007.3
X.2016	4155.8	2891.1	1264.7	4828.6	3242.9	1585.7	4592.0	3081.9	1510.1	-672.8	-351.8	-321.0	-436.2	-190.8	-245.4
I - X.2016	37898.6	25925.6	11973.0	41691.8	27779.6	13912.2	39696.3	26470.6	13225.7	-3793.2	-1854.0	-1939.2	-1797.7	-545.0	-1252.7

¹ Data are preliminary as of 12-th January 2017.

² By data of BNB for the transport costs.

Table 2

**Value changes of exports and imports of Bulgaria in the period January - October 2016¹
compared to the same period of the previous year**

(Per cent)

Months/Periods	Exports - FOB			Imports - CIF			Imports - FOB		
	Total	EU	Non EU	Total	EU	Non EU	Total	EU	Non EU
I	0.7	-1.4	5.0	-7.8	-1.9	-17.3	-7.8	-2.0	-16.9
II	1.6	5.3	-4.8	-6.8	-0.9	-17.4	-6.6	-0.7	-17.2
III	-7.3	3.5	-24.3	-5.2	4.1	-22.4	-5.2	4.0	-22.2
I - III	-2.0	2.4	-9.7	-6.5	0.7	-19.1	-6.5	0.6	-18.8
IV	-7.1	5.5	-27.2	-11.5	-6.0	-20.8	-11.2	-5.7	-20.6
V	-6.3	4.3	-23.2	-2.5	1.6	-9.2	-2.5	1.5	-9.1
VI	-1.7	5.1	-13.5	-2.5	2.5	-11.5	-2.5	2.5	-11.4
IV - VI	-5.0	5.0	-21.4	-5.6	-0.7	-13.9	-5.5	-0.6	-13.8
I - VI	-3.5	3.7	-15.9	-6.1	-0.1	-16.4	-6.0	0.0	-16.2
VII	-0.6	7.2	-14.5	-7.5	-4.2	-13.5	-7.4	-4.1	-13.5
VIII	6.3	8.9	0.9	16.7	18.2	14.3	16.5	17.9	14.1
IX	11.8	14.7	5.6	1.8	2.4	0.7	1.8	2.4	0.6
VII - IX	5.6	10.2	-3.7	2.8	4.5	-0.1	2.8	4.5	-0.2
I - IX	-0.5	6.0	-12.0	-3.1	1.5	-11.1	-3.1	1.5	-11.0
X	6.6	7.5	4.4	4.7	5.8	2.4	4.6	5.6	2.5
I - X	0.2	6.2	-10.6	-2.3	2.0	-9.8	-2.2	1.9	-9.7

¹ Data are preliminary as of 12-th January 2017.



Table 3

Exports, imports and trade balance by groups of countries and main partner countries¹ of Bulgaria in the period January - October 2015 and 2016²

Countries and groups of countries	Exports - FOB			Imports - CIF			Trade balance - FOB/CIF	
	2015	2016	Change compared to the same period of the previous year - %	2015	2016	Change compared to the same period of the previous year - %	2015	2016
	Million BGN			Million BGN			Million BGN	
Total	37805.3	37898.6	0.2	42662.2	41691.8	-2.3	-4856.9	-3793.2
EU	24419.6	25925.6	6.2	27246.6	27779.6	2.0	-2827.0	-1854.0
Austria	674.7	753.2	11.6	1146.1	1177.6	2.7	-471.4	-424.4
Belgium	1368.0	986.7	-27.9	961.8	992.9	3.2	406.2	-6.2
Croatia	154.4	178.5	15.6	91.2	103.6	13.6	63.2	74.9
Cyprus	269.7	130.3	-51.7	66.9	47.4	-29.1	202.8	82.9
Czech Republic	646.8	636.6	-1.6	909.2	880.3	-3.2	-262.4	-243.7
Denmark	203.3	232.2	14.2	193.8	198.0	2.2	9.5	34.2
Estonia	35.5	35.4	-0.3	18.0	24.4	35.6	17.5	11.0
Finland	105.6	62.7	-40.6	97.3	110.8	13.9	8.3	-48.1
France	1625.1	1761.4	8.4	1335.9	1327.0	-0.7	289.2	434.4
Germany	4786.9	5222.4	9.1	5476.3	5537.6	1.1	-689.4	-315.2
Greece	2433.7	2616.9	7.5	2028.6	1985.0	-2.1	405.1	631.9
Hungary	591.6	635.0	7.3	1563.1	1581.6	1.2	-971.5	-946.6
Ireland	51.3	53.9	5.1	133.8	152.3	13.8	-82.5	-98.4
Italy	3568.8	3614.8	1.3	3182.6	3315.3	4.2	386.2	299.5
Latvia	40.0	43.9	9.7	49.3	54.3	10.1	-9.3	-10.4
Lithuania	74.4	88.9	19.5	70.6	82.9	17.4	3.8	6.0
Luxembourg	8.5	9.3	9.4	134.7	144.4	7.2	-126.2	-135.1
Malta	82.3	71.0	-13.7	15.4	28.8	87.0	66.9	42.2
Netherlands	873.9	1040.0	19.0	1404.8	1495.3	6.4	-530.9	-455.3
Poland	858.5	933.4	8.7	1303.3	1656.5	27.1	-444.8	-723.1
Portugal	137.0	174.7	27.5	89.0	79.6	-10.6	48.0	95.1
Romania	3105.7	3430.9	10.5	2909.4	2845.5	-2.2	196.3	585.4
Slovakia	289.7	270.4	-6.7	602.7	559.8	-7.1	-313.0	-289.4
Slovenia	270.1	335.0	24.0	279.5	323.6	15.8	-9.4	11.4
Spain	896.5	1067.0	19.0	2019.0	1645.3	-18.5	-1122.5	-578.3
Sweden	246.4	286.7	16.4	264.5	264.3	-0.1	-18.1	22.4
United Kingdom	956.5	958.6	0.2	764.1	1019.1	33.4	192.4	-60.5
Not specified	64.7	295.8	357.2	135.7	146.4	7.9	-71.0	149.4

¹ Partner country:

- In case of exports (or dispatches) is the country (or Member State) of final destination of the goods.
- In case of imports (or arrivals) is the country (or Member State) of consignment of the goods.

² Data are preliminary as of 12-th of January 2017.

Table 3

Exports, imports and trade balance by groups of countries and main partner countries¹ of Bulgaria in the period January - October 2015 and 2016²

(Continued)

Countries and groups of countries	Exports - FOB			Imports - CIF			Trade balance - FOB/CIF	
	2015	2016	Change compared to the same period of the previous year - %	2015	2016	Change compared to the same period of the previous year - %	2015	2016
	Million BGN			Million BGN			Million BGN	
Non EU countries	13385.7	11973.0	-10.6	15415.6	13912.2	-9.8	-2029.9	-1939.2
CIS³	1242.1	826.3	-33.5	6077.5	4560.7	-25.0	-4835.4	-3734.4
of which:								
Kazakhstan	35.1	24.8	-29.3	41.2	27.0	-34.5	-6.1	-2.2
Russian Federation	663.8	555.0	-16.4	5124.1	3745.7	-26.9	-4460.3	-3190.7
Ukraine	292.4	108.0	-63.1	792.1	648.3	-18.2	-499.7	-540.3
OECD⁴	4666.2	4005.6	-14.2	3851.2	3829.3	-0.6	815.0	176.3
of which:								
Canada	66.7	56.2	-15.7	44.6	75.0	68.2	22.1	-18.8
Israel	125.1	106.7	-14.7	62.3	82.8	32.9	62.8	23.9
Japan	65.5	58.7	-10.4	134.4	157.3	17.0	-68.9	-98.6
Korea, Republic of	93.8	90.2	-3.8	138.2	187.2	35.5	-44.4	-97.0
Turkey	3346.8	3000.9	-10.3	2436.7	2567.9	5.4	910.1	433.0
United States	627.8	470.8	-25.0	404.4	340.9	-15.7	223.4	129.9
EFTA⁵	208.4	142.9	-31.4	343.8	352.3	2.5	-135.4	-209.4
of which:								
Norway	44.7	24.8	-44.5	26.7	39.3	47.2	18.0	-14.5
Switzerland	161.7	116.9	-27.7	314.0	310.0	-1.3	-152.3	-193.1

¹ Partner country:

- In case of exports (or dispatches) is the country (or Member State) of final destination of the goods.
- In case of imports (or arrivals) is the country (or Member State) of consignment of the goods.

² Data are preliminary as of 12-th of January 2017.

³ CIS includes: Azerbaijan; Armenia; Belarus; Kazakhstan; Kyrgyz Republic; Moldova, Republic of; Russian Federation; Tajikistan; Turkmenistan; Uzbekistan and Ukraine.

⁴ OECD includes: Australia; Virgin Islands (US); United States; Iceland; Canada; Mexico; New Zealand; Norway; Korea, Republic of; Turkey; Switzerland; Japan; Israel and Chile.

⁵ EFTA includes: Norway; Switzerland; Iceland and Liechtenstein.

Table 3

Exports, imports and trade balance by groups of countries and main partner countries¹ of Bulgaria in the period January - October 2015 and 2016²

(Continued and end)

Countries and groups of countries	Exports - FOB			Imports - CIF			Trade balance - FOB/CIF	
	2015	2016	Change compared to the same period of the previous year - %	2015	2016	Change compared to the same period of the previous year - %	2015	2016
	Million BGN			Million BGN			Million BGN	
Countries not included in the upper groups								
Albania	95.9	80.2	-16.4	30.6	22.5	-26.5	65.3	57.7
Bosnia and Herzegovina	98.9	111.0	12.2	51.2	66.1	29.1	47.7	44.9
Brazil	41.3	41.3	0.0	51.4	42.0	-18.3	-10.1	-0.7
China	902.1	589.1	-34.7	1578.6	1703.5	7.9	-676.5	-1114.4
Egypt	542.6	362.6	-33.2	114.7	532.8	364.5	427.9	-170.2
Former Yugoslav Republic of Macedonia	620.4	637.0	2.7	434.3	394.0	-9.3	186.1	243.0
Georgia	269.5	264.8	-1.7	374.6	215.1	-42.6	-105.1	49.7
India	88.5	101.7	14.9	236.8	187.4	-20.9	-148.3	-85.7
Indonesia	42.7	41.8	-2.1	58.5	56.5	-3.4	-15.8	-14.7
Iran, Islamic Republic of	216.6	106.8	-50.7	9.2	41.2	347.8	207.4	65.6
Peru	4.9	8.0	63.3	31.2	34.8	11.5	-26.3	-26.8
Serbia	685.9	634.2	-7.5	594.5	604.6	1.7	91.4	29.6
Singapore	619.2	304.1	-50.9	44.9	41.1	-8.5	574.3	263.0
South Africa	99.7	91.4	-8.3	19.6	32.0	63.3	80.1	59.4
Syrian Arab Republic	41.4	29.1	-29.7	14.7	1.5	-89.8	26.7	27.6
Taiwan	36.2	28.3	-21.8	182.4	173.5	-4.9	-146.2	-145.2
United Arab Emirates	357.8	306.7	-14.3	131.4	34.4	-73.8	226.4	272.3
Viet Nam	62.5	145.7	133.1	77.3	66.7	-13.7	-14.8	79.0

¹ Partner country:

- In case of exports (or dispatches) is the country (or Member State) of final destination of the goods.
- In case of imports (or arrivals) is the country (or Member State) of consignment of the goods.

² Data are preliminary as of 12-th of January 2017.

**Exports, imports and trade balance of Bulgaria by sections of SITC, rev. 4
in the period January - October 2015 and 2016¹**

Sections by SITC	Exports - FOB			Imports - CIF			Trade balance - FOB/CIF	
	2015	2016	Change compared to the same period of the previous year - %	2015	2016	Change compared to the same period of the previous year - %	2015	2016
	Million BGN			Million BGN			Million BGN	
Total	37805.3	37898.6	0.2	42662.2	41691.8	-2.3	-4856.9	-3793.2
of which EU	24419.6	25925.6	6.2	27246.6	27779.6	2.0	-2827.0	-1854.0
Food and live animals	3983.2	4288.3	7.7	3258.9	3386.6	3.9	724.3	901.7
of which EU	2678.6	3104.6	15.9	2600.4	2706.7	4.1	78.2	397.9
Beverages and tobacco	672.5	630.4	-6.3	589.3	647.0	9.8	83.2	-16.6
of which EU	234.9	300.2	27.8	465.9	520.8	11.8	-231.0	-220.6
Crude materials, inedible (except fuel)	2510.8	2676.8	6.6	3590.2	2814.9	-21.6	-1079.4	-138.1
of which EU	1564.3	1841.5	17.7	2073.6	1679.0	-19.0	-509.3	162.5
Mineral fuel, lubricants and related materials	4179.2	3415.4	-18.3	6722.7	5077.3	-24.5	-2543.5	-1661.9
of which EU	1210.2	984.0	-18.7	1206.2	1019.6	-15.5	4.0	-35.6
Animals and vegetable oils, fats and waxes	409.5	380.5	-7.1	145.0	146.5	1.0	264.5	234.0
of which EU	275.5	254.7	-7.5	98.2	107.8	9.8	177.3	146.9
Chemical and related products n.e.c.	3774.4	3825.3	1.3	6059.5	6345.8	4.7	-2285.1	-2520.5
of which EU	2160.3	2572.4	19.1	4650.9	4987.4	7.2	-2490.6	-2415.0
Manufactured goods classified chiefly by material	8478.7	7636.4	-9.9	7303.0	7677.8	5.1	1175.7	-41.4
of which EU	5837.6	5421.6	-7.1	4533.2	4911.1	8.3	1304.4	510.5
Machinery and transport equipment	7883.3	8154.9	3.4	11369.9	11592.5	2.0	-3486.6	-3437.6
of which EU	5788.3	6167.7	6.6	8979.0	8989.2	0.1	-3190.7	-2821.5
Miscellaneous manufactured articles	5813.3	6787.0	16.7	3391.0	3757.8	10.8	2422.3	3029.2
of which EU	4596.2	5206.1	13.3	2431.1	2650.5	9.0	2165.1	2555.6
Commodities and transactions n.e.c.	100.4	103.6	3.2	232.7	245.6	5.5	-132.3	-142.0
of which EU	73.7	72.8	-1.2	208.1	207.5	-0.3	-134.4	-134.7

¹Data are preliminary as of 12-th of January 2017.