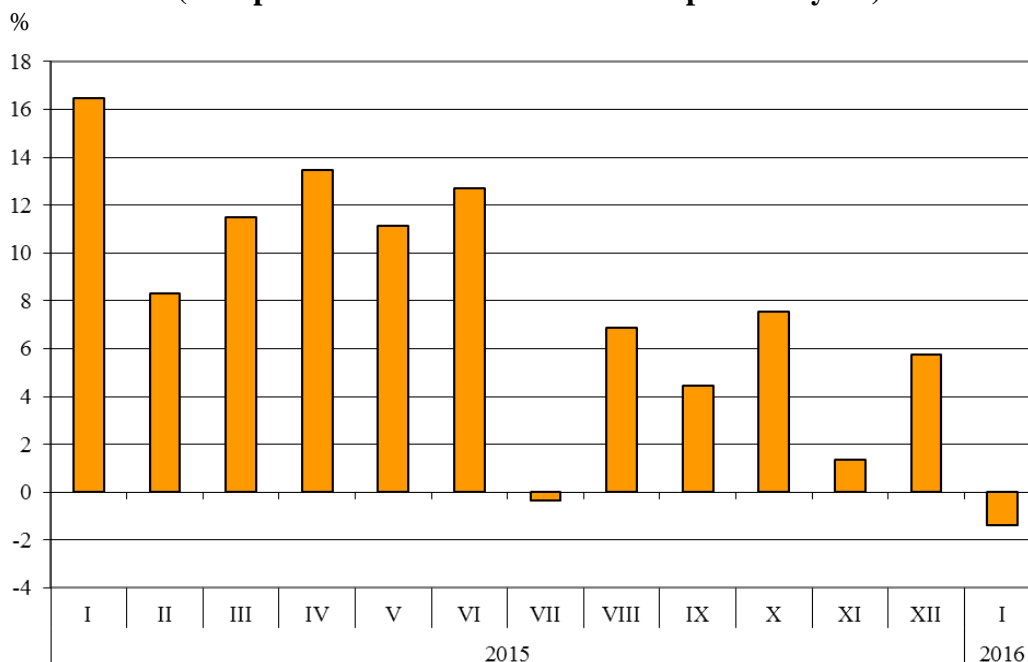




BULGARIAN TRADE WITH EU IN JANUARY 2016 (PRELIMINARY DATA)

In **January 2016** Bulgarian **exports to the EU** decreased by 1.4% compared to the same month of 2015 and amounted to 2 262.7 Million BGN (Annex, Table 1 and 2). Main trade partners of Bulgaria were Germany, Italy, Romania, Greece, France and Belgium which accounted for 67.0% of the exports to the EU Member States (Annex, Table 3).

**Figure 1. Nominal value¹ change of exports of Bulgaria to EU in the period 2015 - 2016
(Compared to the same month of the previous year)**



In January 2016 compared to the corresponding month of the previous year the largest growths in the exports of Bulgaria to the EU distributed according to the **Standard International Trade Classification** (Annex, Table 4) were recorded in the sections ‘Chemical and related products n.e.c.’ (36.8%) and ‘Miscellaneous manufactured articles’² (16.8%). The most notable fall was recorded in section ‘Animals and vegetable oils, fats and waxes’ (61.1%).

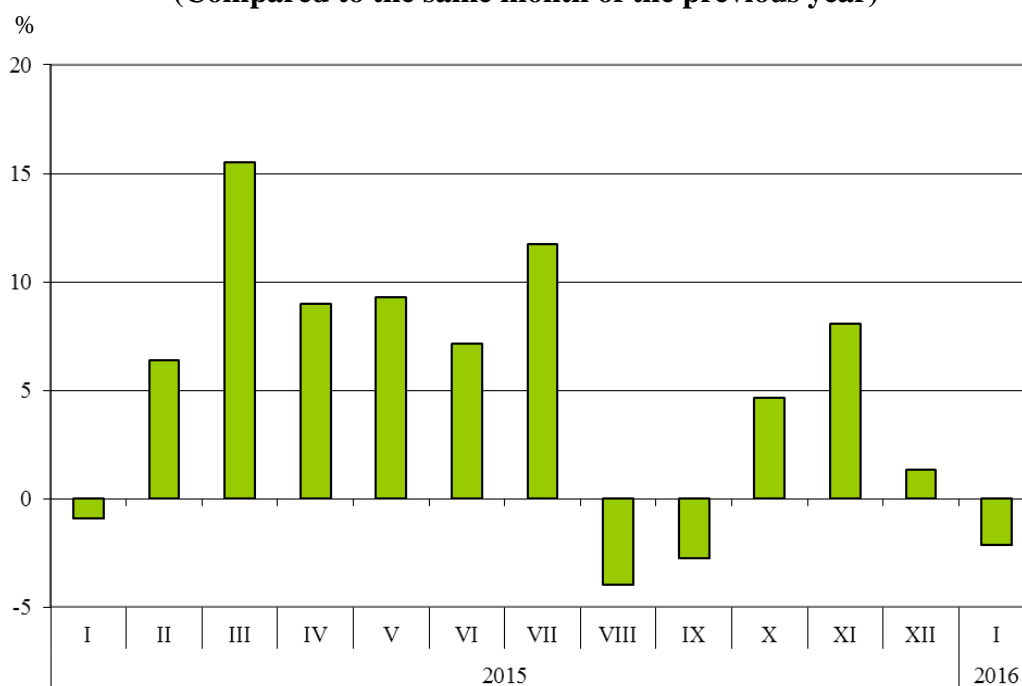
¹ Value changes at current prices.

² The section includes the following divisions: Prefabricated buildings; sanitary, plumbing, heating and lighting fixtures and fittings, Furniture and parts thereof; bedding, mattresses, mattress supports, cushions and similar stuffed furnishings, Travel goods, handbags and similar containers, Articles of apparel and clothing accessories, Footwear, Professional, scientific and controlling instruments and apparatus, Photographic apparatus, equipment and supplies and optical goods, n.e.s.; watches and clocks, Miscellaneous manufactured articles, n.e.s.



Bulgarian imports from the EU in January 2016 decreased by 2.1% compared to the same month of 2015 and added up to 2 263.0 Million BGN at CIF prices (Annex, Tables 1 and 2). The largest amounts were reported for the goods imported from Germany, Italy, Romania, Spain and Greece (Annex, Table 3).

Figure 2. Nominal value¹ change of imports of Bulgaria from EU in the period 2015 - 2016 (Compared to the same month of the previous year)



In January 2016 compared to the corresponding month of the previous year the largest growth in imports from the EU distributed according to the **Standard International Trade Classification** was reported in the section 'Animals and vegetable oils, fats and waxes' (29.3%) while the most notable fall was observed in section 'Mineral fuel, lubricants and related materials' (18.1%).

The **foreign trade balance** of Bulgaria (export FOB - import CIF) **with** the **EU** in January 2016 was negative and added up to 0.3 Million BGN (Annex, Table 1). At FOB/FOB prices (after elimination of transport and insurance costs on imports) the trade balance was positive and amounted to 162.0 Million BGN.

¹ Value changes at current prices.

Table 1

Exports, imports and trade balance of Bulgaria in January 2015¹ and 2016¹ by months

(Million BGN)

| Months/Periods | Exports - FOB | | | Imports - CIF | | | Imports - FOB ² | | | Trade balance - FOB/CIF | | | Trade balance - FOB/FOB ² | | |
|----------------|---------------|--------|--------|---------------|--------|--------|----------------------------|--------|--------|-------------------------|-------|--------|--------------------------------------|-------|--------|
| | Total | EU | Non EU | Total | EU | Non EU | Total | EU | Non EU | Total | EU | Non EU | Total | EU | Non EU |
| I.2015 | 3390.5 | 2294.9 | 1095.6 | 3776.0 | 2312.1 | 1463.9 | 3499.0 | 2147.6 | 1351.4 | -385.5 | -17.2 | -368.3 | -108.5 | 147.3 | -255.8 |
| I.2016 | 3427.0 | 2262.7 | 1164.3 | 3466.4 | 2263.0 | 1203.4 | 3225.3 | 2100.7 | 1124.6 | -39.4 | -0.3 | -39.1 | 201.7 | 162.0 | 39.7 |

¹ Data are preliminary as of 11-th April 2016.

² By data of BNB for the transport costs.

Table 2

Value changes of exports and imports of Bulgaria in January 2016¹ compared to the same month of the previous year

(Per cent)

| Months/Periods | Exports - FOB | | | Imports - CIF | | | Imports - FOB | | |
|----------------|---------------|------|--------|---------------|------|--------|---------------|------|--------|
| | Total | EU | Non EU | Total | EU | Non EU | Total | EU | Non EU |
| I | 1.1 | -1.4 | 6.3 | -8.2 | -2.1 | -17.8 | -7.8 | -2.2 | -16.8 |

¹ Data are preliminary as of 11-th April 2016.

Table 3

Exports, imports and trade balance by groups of countries and main partner countries¹ of Bulgaria in January 2015² and 2016²

| Countries and groups of countries | Exports - FOB | | | Imports - CIF | | | Trade balance - FOB/CIF | |
|-----------------------------------|---------------|---------------|---|---------------|---------------|---|-------------------------|--------------|
| | 2015 | 2016 | Change compared to the same period of the previous year - % | 2015 | 2016 | Change compared to the same period of the previous year - % | 2015 | 2016 |
| | Million BGN | | | Million BGN | | | Million BGN | |
| Total | 3390.5 | 3427.0 | 1.1 | 3776.0 | 3466.4 | -8.2 | -385.5 | -39.4 |
| EU | 2294.9 | 2262.7 | -1.4 | 2312.1 | 2263.0 | -2.1 | -17.2 | -0.3 |
| Austria | 57.0 | 61.1 | 7.2 | 97.5 | 95.6 | -1.9 | -40.5 | -34.5 |
| Belgium | 123.9 | 97.7 | -21.1 | 70.4 | 87.3 | 24.0 | 53.5 | 10.4 |
| Croatia | 12.7 | 27.5 | 116.5 | 5.4 | 6.9 | 27.8 | 7.3 | 20.6 |
| Cyprus | 78.7 | 9.7 | -87.7 | 6.9 | 5.3 | -23.2 | 71.8 | 4.4 |
| Czech Republic | 56.2 | 59.0 | 5.0 | 78.0 | 77.6 | -0.5 | -21.8 | -18.6 |
| Denmark | 17.4 | 23.8 | 36.8 | 16.3 | 17.3 | 6.1 | 1.1 | 6.5 |
| Estonia | 2.5 | 5.6 | 124.0 | 1.6 | 1.3 | -18.8 | 0.9 | 4.3 |
| Finland | 6.0 | 6.3 | 5.0 | 4.3 | 9.2 | 114.0 | 1.7 | -2.9 |
| France | 155.1 | 158.5 | 2.2 | 115.6 | 126.8 | 9.7 | 39.5 | 31.7 |
| Germany | 500.2 | 448.0 | -10.4 | 504.6 | 450.1 | -10.8 | -4.4 | -2.1 |
| Greece | 232.9 | 206.1 | -11.5 | 168.3 | 152.2 | -9.6 | 64.6 | 53.9 |
| Hungary | 43.4 | 69.1 | 59.2 | 140.9 | 129.0 | -8.4 | -97.5 | -59.9 |
| Ireland | 3.5 | 3.1 | -11.4 | 9.8 | 11.6 | 18.4 | -6.3 | -8.5 |
| Italy | 373.1 | 393.2 | 5.4 | 222.7 | 233.4 | 4.8 | 150.4 | 159.8 |
| Latvia | 2.3 | 3.1 | 34.8 | 3.0 | 3.2 | 6.7 | -0.7 | -0.1 |
| Lithuania | 5.9 | 8.8 | 49.2 | 5.3 | 5.2 | -1.9 | 0.6 | 3.6 |
| Luxembourg | 0.3 | 0.9 | 200.0 | 16.3 | 21.0 | 28.8 | -16.0 | -20.1 |
| Malta | 17.5 | 7.9 | -54.9 | 1.6 | 2.0 | 25.0 | 15.9 | 5.9 |
| Netherlands | 86.2 | 79.9 | -7.3 | 121.4 | 135.9 | 11.9 | -35.2 | -56.0 |
| Poland | 72.7 | 74.4 | 2.3 | 81.8 | 107.3 | 31.2 | -9.1 | -32.9 |
| Portugal | 26.7 | 15.6 | -41.6 | 4.1 | 4.0 | -2.4 | 22.6 | 11.6 |
| Romania | 217.3 | 212.7 | -2.1 | 242.8 | 215.3 | -11.3 | -25.5 | -2.6 |
| Slovakia | 26.4 | 22.1 | -16.3 | 43.3 | 45.8 | 5.8 | -16.9 | -23.7 |
| Slovenia | 28.2 | 30.9 | 9.6 | 23.2 | 23.3 | 0.4 | 5.0 | 7.6 |
| Spain | 48.4 | 81.2 | 67.8 | 246.2 | 209.5 | -14.9 | -197.8 | -128.3 |
| Sweden | 22.0 | 21.5 | -2.3 | 20.2 | 26.1 | 29.2 | 1.8 | -4.6 |
| United Kingdom | 76.2 | 92.8 | 21.8 | 58.5 | 56.3 | -3.8 | 17.7 | 36.5 |
| Not specified | 2.2 | 42.2 | 1818.2 | 2.1 | 4.5 | 114.3 | 0.1 | 37.7 |

¹ Partner country:

- In case of exports (or dispatches) is the country (or Member State) of final destination of the goods.

- In case of imports (or arrivals) is the country (or Member State) of consignment of the goods.

² Data are preliminary as of 11-th April 2016.

Table 3

Exports, imports and trade balance by groups of countries and main partner countries¹ of Bulgaria
in January 2015² and 2016²

(Continued)

| Countries and groups of countries | Exports - FOB | | | Imports - CIF | | | Trade balance - FOB/CIF | |
|-----------------------------------|---------------|---------------|---|---------------|---------------|---|-------------------------|---------------|
| | 2015 | 2016 | Change compared to the same period of the previous year - % | 2015 | 2016 | Change compared to the same period of the previous year - % | 2015 | 2016 |
| | Million BGN | | | Million BGN | | | Million BGN | |
| Non EU countries | 1095.6 | 1164.3 | 6.3 | 1463.9 | 1203.4 | -17.8 | -368.3 | -39.1 |
| CIS³ | 69.0 | 70.6 | 2.3 | 525.8 | 445.0 | -15.4 | -456.8 | -374.4 |
| of which: | | | | | | | | |
| Kazakhstan | 1.5 | 1.6 | 6.7 | 3.7 | 2.6 | -29.7 | -2.2 | -1.0 |
| Russian Federation | 36.5 | 44.0 | 20.5 | 449.5 | 386.7 | -14.0 | -413.0 | -342.7 |
| Ukraine | 14.7 | 14.4 | -2.0 | 66.6 | 50.0 | -24.9 | -51.9 | -35.6 |
| OECD⁴ | 419.7 | 397.1 | -5.4 | 378.3 | 332.1 | -12.2 | 41.4 | 65.0 |
| of which: | | | | | | | | |
| Canada | 4.9 | 6.4 | 30.6 | 2.6 | 8.8 | 238.5 | 2.3 | -2.4 |
| Israel | 8.5 | 9.4 | 10.6 | 5.3 | 26.9 | 407.5 | 3.2 | -17.5 |
| Japan | 5.0 | 5.6 | 12.0 | 14.0 | 12.2 | -12.9 | -9.0 | -6.6 |
| Korea, Republic of | 3.5 | 5.3 | 51.4 | 13.5 | 18.2 | 34.8 | -10.0 | -12.9 |
| Turkey | 316.1 | 286.6 | -9.3 | 190.6 | 203.1 | 6.6 | 125.5 | 83.5 |
| United States | 51.6 | 48.4 | -6.2 | 41.0 | 30.4 | -25.9 | 10.6 | 18.0 |
| EFTA⁵ | 23.2 | 27.6 | 19.0 | 30.7 | 27.5 | -10.4 | -7.5 | 0.1 |
| of which: | | | | | | | | |
| Norway | 4.9 | 5.6 | 14.3 | 1.6 | 5.6 | 250.0 | 3.3 | 0.0 |
| Switzerland | 18.3 | 21.8 | 19.1 | 28.6 | 21.6 | -24.5 | -10.3 | 0.2 |

¹ Partner country:

- In case of exports (or dispatches) is the country (or Member State) of final destination of the goods.
- In case of imports (or arrivals) is the country (or Member State) of consignment of the goods.

² Data are preliminary as of 11-th April 2016.

³ CIS includes: Azerbaijan; Armenia; Belarus; Kazakhstan; Kyrgyz. Republic; Moldova. Republic of; Russian Federation; Tajikistan; Turkmenistan; Uzbekistan and Ukraine.

⁴ OECD includes: Australia; Virgin Islands (US); United States; Iceland; Canada; Mexico; New Zealand; Norway; Korea. Republic of; Turkey; Switzerland; Japan; Israel and Chile.

⁵ EFTA includes: Norway; Switzerland; Iceland and Liechtenstein.

Table 3

Exports, imports and trade balance by groups of countries and main partner countries¹ of Bulgaria
in January 2015² and 2016²

(Continued and end)

| Countries and groups of countries | Exports - FOB | | | Imports - CIF | | | Trade balance - FOB/CIF | |
|---|---------------|------|---|---------------|-------|---|-------------------------|-------|
| | 2015 | 2016 | Change compared to the same period of the previous year - % | 2015 | 2016 | Change compared to the same period of the previous year - % | 2015 | 2016 |
| | Million BGN | | | Million BGN | | | Million BGN | |
| Countries not included in the upper groups | | | | | | | | |
| Albania | 8.0 | 6.3 | -21.3 | 3.4 | 1.2 | -64.7 | 4.6 | 5.1 |
| Bosnia and Herzegovina | 10.6 | 8.8 | -17.0 | 6.7 | 3.7 | -44.8 | 3.9 | 5.1 |
| Brazil | 2.8 | 1.7 | -39.3 | 8.6 | 2.6 | -69.8 | -5.8 | -0.9 |
| China | 65.0 | 99.3 | 52.8 | 183.5 | 168.0 | -8.4 | -118.5 | -68.7 |
| Egypt | 30.0 | 62.3 | 107.7 | 15.5 | 18.3 | 18.1 | 14.5 | 44.0 |
| Former Yugoslav Republic of Macedonia | 52.1 | 61.5 | 18.0 | 41.7 | 27.6 | -33.8 | 10.4 | 33.9 |
| Georgia | 15.6 | 12.4 | -20.5 | 33.9 | 16.1 | -52.5 | -18.3 | -3.7 |
| India | 7.4 | 5.8 | -21.6 | 27.1 | 21.8 | -19.6 | -19.7 | -16.0 |
| Indonesia | 5.5 | 3.4 | -38.2 | 6.1 | 5.6 | -8.2 | -0.6 | -2.2 |
| Iran, Islamic Republic of | 29.2 | 24.8 | -15.1 | 0.4 | 3.2 | 700.0 | 28.8 | 21.6 |
| Peru | 0.3 | 0.6 | 100.0 | 3.4 | 6.0 | 76.5 | -3.1 | -5.4 |
| Serbia | 58.0 | 51.0 | -12.1 | 34.7 | 35.6 | 2.6 | 23.3 | 15.4 |
| Singapore | 59.6 | 25.4 | -57.4 | 4.3 | 5.7 | 32.6 | 55.3 | 19.7 |
| South Africa | 2.4 | 2.4 | 0.0 | 2.6 | 4.3 | 65.4 | -0.2 | -1.9 |
| Syrian Arab Republic | 2.3 | 4.6 | 100.0 | 1.5 | 0.5 | -66.7 | 0.8 | 4.1 |
| Taiwan | 2.8 | 2.1 | -25.0 | 29.6 | 15.6 | -47.3 | -26.8 | -13.5 |
| United Arab Emirates | 51.2 | 28.8 | -43.8 | 35.9 | 4.4 | -87.7 | 15.3 | 24.4 |
| Viet Nam | 3.3 | 2.9 | -12.1 | 6.6 | 3.7 | -43.9 | -3.3 | -0.8 |

¹ Partner country:

- In case of exports (or dispatches) is the country (or Member State) of final destination of the goods.
- In case of imports (or arrivals) is the country (or Member State) of consignment of the goods.

² Data are preliminary as of 11-th April 2016.

Exports, imports and trade balance of Bulgaria by sections of SITC, rev.4
in January 2015¹ and 2016¹

| Sections by SITC | Exports - FOB | | | Imports - CIF | | | Trade balance - FOB/CIF | |
|---|---------------|---------------|---|---------------|---------------|---|-------------------------|--------------|
| | 2015 | 2016 | Change compared to the same period of the previous year - % | 2015 | 2016 | Change compared to the same period of the previous year - % | 2015 | 2016 |
| | Million BGN | | | Million BGN | | | Million BGN | |
| Total | 3390.5 | 3427.0 | 1.1 | 3776.0 | 3466.4 | -8.2 | -385.5 | -39.4 |
| of which EU | 2294.9 | 2262.7 | -1.4 | 2312.1 | 2263.0 | -2.1 | -17.2 | -0.3 |
| Food and live animals | 325.9 | 323.5 | -0.7 | 292.9 | 274.0 | -6.5 | 33.0 | 49.5 |
| of which EU | 198.1 | 230.7 | 16.5 | 218.4 | 214.8 | -1.6 | -20.3 | 15.9 |
| Beverages and tobacco | 69.2 | 64.3 | -7.1 | 41.8 | 35.0 | -16.3 | 27.4 | 29.3 |
| of which EU | 22.4 | 20.5 | -8.5 | 30.1 | 29.6 | -1.7 | -7.7 | -9.1 |
| Crude materials, inedible (except fuel) | 253.3 | 229.0 | -9.6 | 511.4 | 307.6 | -39.9 | -258.1 | -78.6 |
| of which EU | 167.0 | 140.2 | -16.0 | 268.5 | 221.9 | -17.4 | -101.5 | -81.7 |
| Mineral fuel, lubricants and related materials | 390.5 | 296.7 | -24.0 | 527.0 | 456.2 | -13.4 | -136.5 | -159.5 |
| of which EU | 137.5 | 60.3 | -56.1 | 87.9 | 72.0 | -18.1 | 49.6 | -11.7 |
| Animals and vegetable oils, fats and waxes | 42.8 | 24.1 | -43.7 | 10.9 | 13.9 | 27.5 | 31.9 | 10.2 |
| of which EU | 36.5 | 14.2 | -61.1 | 8.2 | 10.6 | 29.3 | 28.3 | 3.6 |
| Chemical and related products n.e.c. | 291.3 | 346.8 | 19.1 | 500.5 | 537.9 | 7.5 | -209.2 | -191.1 |
| of which EU | 168.5 | 230.5 | 36.8 | 372.7 | 414.6 | 11.2 | -204.2 | -184.1 |
| Manufactured goods classified chiefly by material | 801.1 | 703.6 | -12.2 | 682.7 | 571.7 | -16.3 | 118.4 | 131.9 |
| of which EU | 583.9 | 496.8 | -14.9 | 418.8 | 346.8 | -17.2 | 165.1 | 150.0 |
| Machinery and transport equipment | 681.9 | 712.6 | 4.5 | 915.2 | 961.2 | 5.0 | -233.3 | -248.6 |
| of which EU | 520.3 | 533.7 | 2.6 | 693.2 | 737.8 | 6.4 | -172.9 | -204.1 |
| Miscellaneous manufactured articles | 523.7 | 717.7 | 37.0 | 271.2 | 289.5 | 6.7 | 252.5 | 428.2 |
| of which EU | 453.1 | 529.3 | 16.8 | 194.8 | 197.6 | 1.4 | 258.3 | 331.7 |
| Commodities and transactions n.e.c. | 10.8 | 8.7 | -19.4 | 22.4 | 19.4 | -13.4 | -11.6 | -10.7 |
| of which EU | 7.6 | 6.5 | -14.5 | 19.5 | 17.3 | -11.3 | -11.9 | -10.8 |

¹Data are preliminary as of 11-th April 2016.