

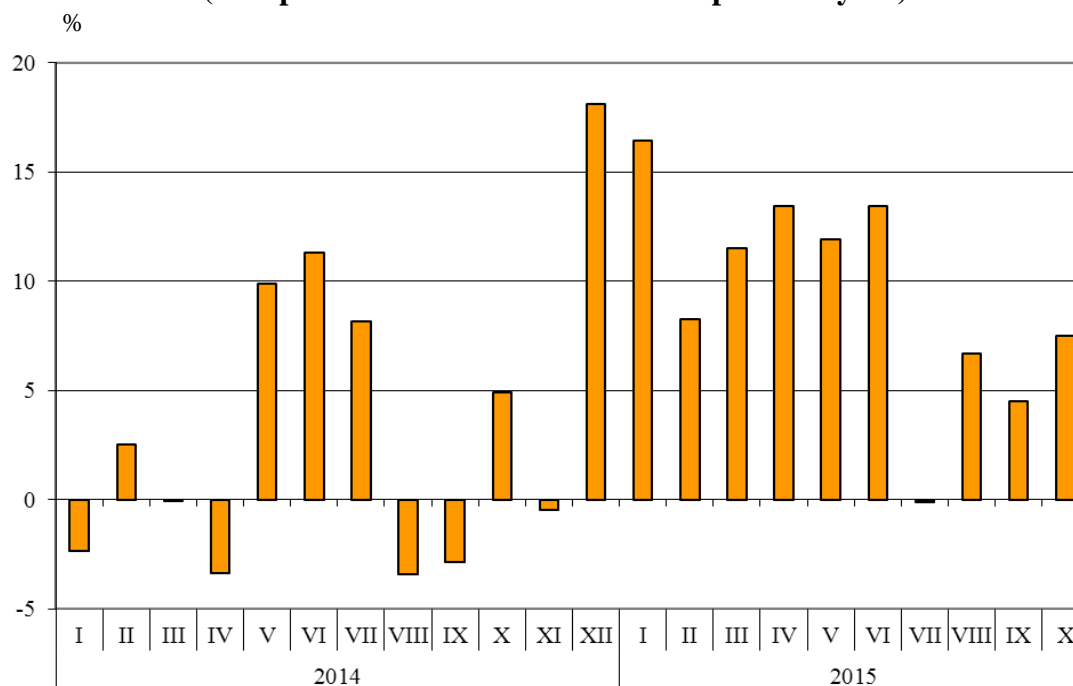


BULGARIAN TRADE WITH EU IN THE PERIOD JANUARY - OCTOBER 2015 (PRELIMINARY DATA)

In the period **January - October 2015** Bulgarian **exports to the EU** increased by 9.0% compared to the corresponding period of 2014 and amounted to 24.4 Billion BGN (Annex, Table 1 and 2). Main trade partners of Bulgaria were Germany, Italy, Romania, Greece, France and Belgium which accounted for 69.2% of the exports to the EU Member States (Annex, Table 3).

In **October 2015** the exports to the EU grew by 7.5% compared to the corresponding month of the previous year and amounted to 2.697 Billion BGN.

**Figure 1. Nominal value¹ change of exports of Bulgaria to EU in the period 2014 - 2015
(Compared to the same month of the previous year)**



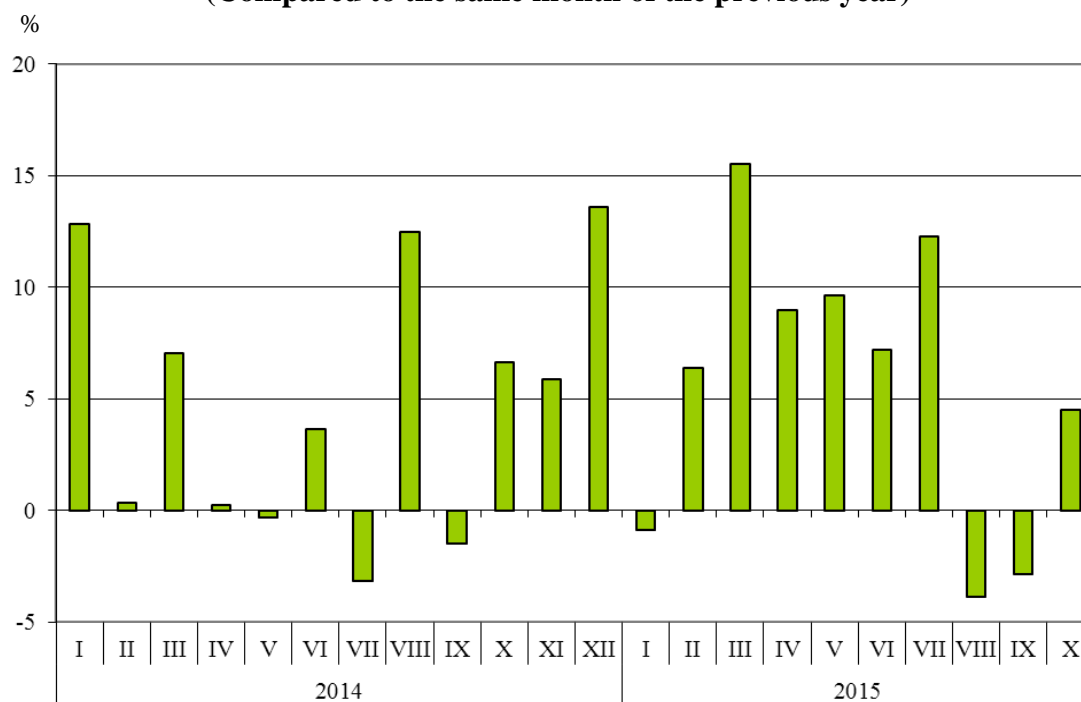
Bulgarian **imports from the EU** in the period January - October 2015 increased by 5.7% compared to the same period of 2014 and added up to 27.3 Billion BGN at CIF prices (Annex, Tables 1 and 2). The largest amounts were reported for the goods imported from Germany, Italy, Romania, Spain and Greece (Annex, Table 3).

In **October 2015** the Bulgarian imports from the EU Member States grew by 4.5% compared to the corresponding month of the previous year and amounted to 3.082 Billion BGN at CIF prices.

¹ Value changes at current prices.



**Figure 2. Nominal value¹ change of imports of Bulgaria from EU in the period 2014 - 2015
(Compared to the same month of the previous year)**



The **foreign trade balance** of Bulgaria (export FOB - import CIF) **with the EU** in the period January - October 2015 was negative and added up to 2 892.7 Million BGN (Annex, Table 1). At FOB/FOB prices (after elimination of transport and insurance costs on imports) the trade balance was also negative and amounted to 1 056.3 Million BGN.

In the ten months of **2015** compared to the same period of 2014 the largest growth **in the exports** of Bulgaria to the **EU** distributed according to the Standard International Trade Classification (Annex, Table 4) was recorded in the sections ‘Chemical and related products n.e.c.’ (22.4%) and ‘Mineral fuel, lubricants and related materials’ (20.4%). Fall was recorded in section ‘Beverages and tobacco’ (1.5%).

In **imports from the EU** the largest growth was reported in the section ‘Beverages and tobacco’ (24.7%) while the most notable fall was observed in section ‘Mineral fuel, lubricants and related materials’ (23.2%).

¹ Value changes at current prices.

Exports, imports and trade balance of Bulgaria in the period January - October 2014 and 2015¹ by months

Table 1
(Million BGN)

Months/Periods	Exports - FOB			Imports - CIF			Imports - FOB ²			Trade balance - FOB/CIF			Trade balance - FOB/FOB ²		
	Total	EU	Non-EU	Total	EU	Non-EU	Total	EU	Non-EU	Total	EU	Non-EU	Total	EU	Non-EU
I.2014	3099.1	1970.5	1128.6	3955.8	2333.1	1622.7	3677.7	2172.5	1505.2	-856.7	-362.6	-494.1	-578.6	-202.0	-376.6
II.2014	3226.8	2001.1	1225.7	3795.4	2466.6	1328.8	3535.1	2306.6	1228.5	-568.6	-465.5	-103.1	-308.3	-305.5	-2.8
III.2014	3193.6	2171.8	1021.8	3935.8	2497.8	1438.0	3687.1	2341.3	1345.8	-742.2	-326.0	-416.2	-493.5	-169.5	-324.0
I - III.2014	9519.5	6143.4	3376.1	11687.0	7297.5	4389.5	10899.9	6820.4	4079.5	-2167.5	-1154.1	-1013.4	-1380.4	-677.0	-703.4
IV.2014	3468.6	2117.6	1351.0	4303.1	2630.3	1672.8	4017.5	2455.1	1562.4	-834.5	-512.7	-321.8	-548.9	-337.5	-211.4
V.2014	3499.0	2065.0	1434.0	4132.0	2366.2	1765.8	3856.8	2213.1	1643.7	-633.0	-301.2	-331.8	-357.8	-148.1	-209.7
VI.2014	3704.8	2271.5	1433.3	4168.0	2641.9	1526.1	3881.1	2464.1	1417.0	-463.2	-370.4	-92.8	-176.3	-192.6	16.3
IV - VI.2014	10672.4	6454.1	4218.3	12603.1	7638.4	4964.7	11755.4	7132.3	4623.1	-1930.7	-1184.3	-746.4	-1083.0	-678.2	-404.8
I - VI.2014	20191.9	12597.5	7594.4	24290.1	14935.9	9354.2	22655.3	13952.7	8702.6	-4098.2	-2338.4	-1759.8	-2463.4	-1355.2	-1108.2
VII.2014	4016.0	2636.7	1379.3	4397.0	2760.6	1636.4	4100.4	2576.8	1523.6	-381.0	-123.9	-257.1	-84.4	59.9	-144.3
VIII.2014	3801.9	2302.9	1499.0	4309.1	2465.1	1844.0	4002.5	2291.9	1710.6	-507.2	-162.2	-345.0	-200.6	11.0	-211.6
IX.2014	3919.0	2378.5	1540.5	4671.3	2752.6	1918.7	4335.2	2564.5	1770.7	-752.3	-374.1	-378.2	-416.2	-186.0	-230.2
VII - IX.2014	11736.9	7318.1	4418.8	13377.4	7978.3	5399.1	12438.1	7433.2	5004.9	-1640.5	-660.2	-980.3	-701.2	-115.1	-586.1
I - IX.2014	31928.8	19915.6	12013.2	37667.5	22914.2	14753.3	35093.4	21385.9	13707.5	-5738.7	-2998.6	-2740.1	-3164.6	-1470.3	-1694.3
X.2014	4031.0	2509.1	1521.9	4666.1	2948.9	1717.2	4339.5	2746.5	1593.0	-635.1	-439.8	-195.3	-308.5	-237.4	-71.1
I - X.2014	35959.8	22424.7	13535.1	42333.6	25863.1	16470.5	39432.9	24132.4	15300.5	-6373.8	-3438.4	-2935.4	-3473.1	-1707.7	-1765.4
I.2015	3390.3	2294.6	1095.7	3776.2	2312.2	1464.0	3499.0	2147.6	1351.4	-385.9	-17.6	-368.3	-108.7	147.0	-255.7
II.2015	3423.2	2166.6	1256.6	4110.8	2624.6	1486.2	3825.0	2447.5	1377.5	-687.6	-458.0	-229.6	-401.8	-280.9	-120.9
III.2015	3945.4	2421.5	1523.9	4436.4	2885.4	1551.0	4145.9	2697.0	1448.9	-491.0	-463.9	-27.1	-200.5	-275.5	75.0
I - III.2015	10758.9	6882.7	3876.2	12323.4	7822.2	4501.2	11469.9	7292.1	4177.8	-1564.5	-939.5	-625.0	-711.0	-409.4	-301.6
IV.2015	3902.8	2402.3	1500.5	4524.4	2866.3	1658.1	4204.8	2664.1	1540.7	-621.6	-464.0	-157.6	-302.0	-261.8	-40.2
V.2015	3735.4	2311.5	1423.9	4201.9	2594.5	1607.4	3923.7	2425.8	1497.9	-466.5	-283.0	-183.5	-188.3	-114.3	-74.0
VI.2015	4040.5	2577.2	1463.3	4436.8	2832.6	1604.2	4146.7	2649.6	1497.1	-396.3	-255.4	-140.9	-106.2	-72.4	-33.8
IV - VI.2015	11678.7	7291.0	4387.7	13163.1	8293.4	4869.7	12275.2	7739.5	4535.7	-1484.4	-1002.4	-482.0	-596.5	-448.5	-148.0
I - VI.2015	22437.6	14173.7	8263.9	25486.5	16115.6	9370.9	23745.1	15031.6	8713.5	-3048.9	-1941.9	-1107.0	-1307.5	-857.9	-449.6
VII.2015	4091.7	2633.7	1458.0	4758.0	3099.3	1658.7	4422.7	2882.0	1540.7	-666.3	-465.6	-200.7	-331.0	-248.3	-82.7
VIII.2015	3763.3	2456.8	1306.5	3817.9	2369.0	1448.9	3559.5	2215.3	1344.2	-54.6	87.8	-142.4	203.8	241.5	-37.7
IX.2015	3762.0	2485.0	1277.0	4099.3	2673.2	1426.1	3831.3	2500.2	1331.1	-337.3	-188.2	-149.1	-69.3	-15.2	-54.1
VII - IX.2015	11617.0	7575.5	4041.5	12675.2	8141.5	4533.7	11813.5	7597.5	4216.0	-1058.2	-566.0	-492.2	-196.5	-22.0	-174.5
I - IX.2015	34054.6	21749.2	12305.4	38161.7	24257.1	13904.6	35558.6	22629.1	12929.5	-4107.1	-2507.9	-1599.2	-1504.0	-879.9	-624.1
X.2015	4040.4	2697.5	1342.9	4634.2	3082.3	1551.9	4325.3	2873.9	1451.4	-593.8	-384.8	-209.0	-284.9	-176.4	-108.5
I - X.2015	38095.0	24446.7	13648.3	42795.9	27339.4	15456.5	39883.9	25503.0	14380.9	-4700.9	-2892.7	-1808.2	-1788.9	-1056.3	-732.6

¹ Data are preliminary as of 11-th January 2016.

² By data of BNB for the transport costs.



Table 2

**Value changes of exports and imports of Bulgaria in the period January - October 2015¹
compared to the same period of the previous year**

(Per cent)

Months/Periods	Exports - FOB			Imports - CIF			Imports - FOB		
	Total	EU	Non-EU	Total	EU	Non-EU	Total	EU	Non-EU
I	9.4	16.4	-2.9	-4.5	-0.9	-9.8	-4.9	-1.1	-10.2
II	6.1	8.3	2.5	8.3	6.4	11.8	8.2	6.1	12.1
III	23.5	11.5	49.1	12.7	15.5	7.9	12.4	15.2	7.7
I - III	13.0	12.0	14.8	5.4	7.2	2.5	5.2	6.9	2.4
IV	12.5	13.4	11.1	5.1	9.0	-0.9	4.7	8.5	-1.4
V	6.8	11.9	-0.7	1.7	9.6	-9.0	1.7	9.6	-8.9
VI	9.1	13.5	2.1	6.4	7.2	5.1	6.8	7.5	5.7
IV - VI	9.4	13.0	4.0	4.4	8.6	-1.9	4.4	8.5	-1.9
I - VI	11.1	12.5	8.8	4.9	7.9	0.2	4.8	7.7	0.1
VII	1.9	-0.1	5.7	8.2	12.3	1.4	7.9	11.8	1.1
VIII	-1.0	6.7	-12.8	-11.4	-3.9	-21.4	-11.1	-3.3	-21.4
IX	-4.0	4.5	-17.1	-12.2	-2.9	-25.7	-11.6	-2.5	-24.8
VII - IX	-1.0	3.5	-8.5	-5.2	2.0	-16.0	-5.0	2.2	-15.8
I - IX	6.7	9.2	2.4	1.3	5.9	-5.8	1.3	5.8	-5.7
X	0.2	7.5	-11.8	-0.7	4.5	-9.6	-0.3	4.6	-8.9
I - X	5.9	9.0	0.8	1.1	5.7	-6.2	1.1	5.7	-6.0

¹ Data are preliminary as of 11-th January 2016.



Table 3

Exports, imports and trade balance by groups of countries and main partner countries¹ of Bulgaria in the period January - October 2014 and 2015²

Countries and groups of countries	Exports - FOB			Imports - CIF			Trade balance - FOB/CIF	
	2014	2015	Change compared to the same period of the previous year - %	2014	2015	Change compared to the same period of the previous year - %	2014	2015
	Million BGN			Million BGN			Million BGN	
Total	35959.8	38095.0	5.9	42333.6	42795.9	1.1	-6373.8	-4700.9
EU	22424.7	24446.7	9.0	25863.1	27339.4	5.7	-3438.4	-2892.7
Austria	639.9	675.3	5.5	1207.1	1147.4	-4.9	-567.2	-472.1
Belgium	1459.5	1400.3	-4.1	880.5	961.6	9.2	579.0	438.7
Croatia	153.2	154.5	0.8	74.5	91.2	22.4	78.7	63.3
Cyprus	155.8	269.9	73.2	45.6	66.9	46.7	110.2	203.0
Czech Republic	506.7	642.6	26.8	968.5	909.8	-6.1	-461.8	-267.2
Denmark	170.6	203.3	19.2	174.3	194.0	11.3	-3.7	9.3
Estonia	32.0	35.6	11.3	32.9	17.9	-45.6	-0.9	17.7
Finland	123.3	106.9	-13.3	79.2	96.7	22.1	44.1	10.2
France	1564.1	1622.5	3.7	1283.0	1333.2	3.9	281.1	289.3
Germany	4381.7	4798.4	9.5	4983.6	5473.3	9.8	-601.9	-674.9
Greece	2383.3	2433.7	2.1	2104.6	2028.7	-3.6	278.7	405.0
Hungary	498.0	592.2	18.9	1407.0	1563.8	11.1	-909.0	-971.6
Ireland	61.4	51.3	-16.4	126.7	133.8	5.6	-65.3	-82.5
Italy	3263.3	3565.6	9.3	2977.4	3178.8	6.8	285.9	386.8
Latvia	40.9	40.0	-2.2	16.9	49.3	191.7	24.0	-9.3
Lithuania	77.4	74.4	-3.9	66.4	70.6	6.3	11.0	3.8
Luxembourg	4.7	8.7	85.1	123.0	134.7	9.5	-118.3	-126.0
Malta	60.8	82.7	36.0	136.2	15.4	-88.7	-75.4	67.3
Netherlands	804.1	872.4	8.5	1147.1	1406.7	22.6	-343.0	-534.3
Poland	718.3	858.8	19.6	1185.4	1304.3	10.0	-467.1	-445.5
Portugal	139.3	135.5	-2.7	79.2	89.6	13.1	60.1	45.9
Romania	2894.3	3106.3	7.3	2913.2	2911.9	0.0	-18.9	194.4
Slovakia	262.0	289.8	10.6	489.0	602.7	23.3	-227.0	-312.9
Slovenia	190.8	269.6	41.3	279.1	279.4	0.1	-88.3	-9.8
Spain	734.9	896.7	22.0	2049.1	2115.6	3.2	-1314.2	-1218.9
Sweden	234.4	246.7	5.2	251.9	263.7	4.7	-17.5	-17.0
United Kingdom	796.3	956.8	20.2	736.0	764.4	3.9	60.3	192.4
Not specified	73.7	56.2	-23.7	45.7	134.0	193.2	28.0	-77.8

¹ Partner country:

- In case of exports (or dispatches) is the country (or Member State) of final destination of the goods.
- In case of imports (or arrivals) is the country (or Member State) of consignment of the goods.

² Data are preliminary as of 11-th January 2016.

Table 3

Exports, imports and trade balance by groups of countries and main partner countries¹ of Bulgaria in the period January - October 2014 and 2015²

(Continued)

Countries and groups of countries	Exports - FOB			Imports - CIF			Trade balance - FOB/CIF	
	2014	2015	Change compared to the same period of the previous year - %	2014	2015	Change compared to the same period of the previous year - %	2014	2015
	Million BGN			Million BGN			Million BGN	
Non EU countries	13535.1	13648.3	0.8	16470.5	15456.5	-6.2	-2935.4	-1808.2
CIS³	1527.3	1278.8	-16.3	7771.1	6048.5	-22.2	-6243.8	-4769.7
of which:								
Kazakhstan	53.0	37.2	-29.8	61.0	41.3	-32.3	-8.0	-4.1
Russian Federation	861.3	645.8	-25.0	6643.2	5095.0	-23.3	-5781.9	-4449.2
Ukraine	272.0	321.6	18.2	906.3	792.1	-12.6	-634.3	-470.5
OECD⁴	4586.1	4764.8	3.9	3673.1	3882.9	5.7	913.0	881.9
of which:								
Canada	63.0	76.2	21.0	39.5	44.5	12.7	23.5	31.7
Israel	167.3	132.5	-20.8	109.2	60.6	-44.5	58.1	71.9
Japan	46.3	67.5	45.8	138.6	134.5	-3.0	-92.3	-67.0
Korea, Republic of	131.3	95.6	-27.2	136.6	138.7	1.5	-5.3	-43.1
Turkey	3313.6	3347.3	1.0	2382.9	2441.9	2.5	930.7	905.4
United States	497.7	623.3	25.2	485.1	403.5	-16.8	12.6	219.8
EFTA⁵	268.8	279.4	3.9	314.5	344.4	9.5	-45.7	-65.0
of which:								
Norway	59.4	57.4	-3.4	29.0	26.6	-8.3	30.4	30.8
Switzerland	206.3	219.7	6.5	284.3	314.7	10.7	-78.0	-95.0

¹ Partner country:

- In case of exports (or dispatches) is the country (or Member State) of final destination of the goods.

- In case of imports (or arrivals) is the country (or Member State) of consignment of the goods.

² Data are preliminary as of 11-th January 2016.

³ CIS includes: Azerbaijan; Armenia; Belarus; Kazakhstan; Kyrgyz, Republic; Moldova, Republic of; Russian Federation; Tajikistan; Turkmenistan; Uzbekistan and Ukraine.

⁴ OECD includes: Australia; Virgin Islands (US); United States; Iceland; Canada; Mexico; New Zealand; Norway; Korea, Republic of; Turkey; Switzerland; Japan; Israel and Chile.

⁵ EFTA includes: Norway; Switzerland; Iceland and Liechtenstein.

Table 3

Exports, imports and trade balance by groups of countries and main partner countries¹ of Bulgaria in the period January - October 2014 and 2015²

(Continued and end)

Countries and groups of countries	Exports - FOB			Imports - CIF			Trade balance - FOB/CIF	
	2014	2015	Change compared to the same period of the previous year - %	2014	2015	Change compared to the same period of the previous year - %	2014	2015
	Million BGN			Million BGN			Million BGN	
Countries not included in the upper groups								
Albania	94.4	101.4	7.4	27.2	30.6	12.5	67.2	70.8
Bosnia and Herzegovina	66.9	99.1	48.1	66.1	50.7	-23.3	0.8	48.4
Brazil	23.9	43.4	81.6	87.4	51.5	-41.1	-63.5	-8.1
China	851.4	918.3	7.9	1408.2	1577.5	12.0	-556.8	-659.2
Egypt	308.7	540.6	75.1	225.6	116.1	-48.5	83.1	424.5
Former Yugoslav Republic of Macedonia	585.6	622.6	6.3	434.2	439.8	1.3	151.4	182.8
Georgia	311.0	268.7	-13.6	377.3	383.3	1.6	-66.3	-114.6
India	77.8	95.8	23.1	179.3	236.8	32.1	-101.5	-141.0
Indonesia	48.3	46.2	-4.3	53.5	58.0	8.4	-5.2	-11.8
Iran, Islamic Republic of	131.4	216.8	65.0	17.7	9.2	-48.0	113.7	207.6
Peru	6.4	5.0	-21.9	35.6	34.3	-3.7	-29.2	-29.3
Serbia	585.8	685.8	17.1	508.3	590.6	16.2	77.5	95.2
Singapore	972.4	621.5	-36.1	31.1	44.9	44.4	941.3	576.6
South Africa	76.0	101.6	33.7	33.3	19.6	-41.1	42.7	82.0
Syrian Arab Republic	142.8	41.4	-71.0	31.2	14.7	-52.9	111.6	26.7
Taiwan	32.3	40.1	24.1	149.4	182.9	22.4	-117.1	-142.8
United Arab Emirates	425.3	365.7	-14.0	71.5	131.3	83.6	353.8	234.4
Viet Nam	28.1	66.0	134.9	73.4	76.9	4.8	-45.3	-10.9

¹ Partner country:

- In case of exports (or dispatches) is the country (or Member State) of final destination of the goods.
- In case of imports (or arrivals) is the country (or Member State) of consignment of the goods.

² Data are preliminary as of 11-th January 2016.

Table 4

Exports, imports and trade balance of Bulgaria by sections of SITC, rev.4 in the period January - October 2014 and 2015¹

Sections by SITC	Exports - FOB			Imports - CIF			Trade balance - FOB/CIF	
	2014	2015	Change compared to the same period of the previous year - %	2014	2015	Change compared to the same period of the previous year - %	2014	2015
	Million BGN			Million BGN			Million BGN	
Total	35959.8	38095.0	5.9	42333.6	42795.9	1.1	-6373.8	-4700.9
of which EU	22424.7	24446.7	9.0	25863.1	27339.4	5.7	-3438.4	-2892.7
Food and live animals	3718.9	3971.5	6.8	3031.4	3256.8	7.4	687.5	714.7
of which EU	2500.6	2680.5	7.2	2537.7	2601.3	2.5	-37.1	79.2
Beverages and tobacco	712.1	682.5	-4.2	540.5	587.2	8.6	171.6	95.3
of which EU	239.7	236.0	-1.5	372.6	464.5	24.7	-132.9	-228.5
Crude materials, inedible (except fuel)	2609.0	2524.0	-3.3	3501.4	3752.0	7.2	-892.4	-1228.0
of which EU	1562.8	1570.4	0.5	2134.9	2170.7	1.7	-572.1	-600.3
Mineral fuel, lubricants and related materials	4679.5	4184.4	-10.6	8615.5	6736.7	-21.8	-3936.0	-2552.3
of which EU	998.8	1202.2	20.4	1570.6	1207.0	-23.2	-571.8	-4.8
Animals and vegetable oils, fats and waxes	343.0	410.2	19.6	157.7	145.1	-8.0	185.3	265.1
of which EU	254.5	275.6	8.3	121.7	98.2	-19.3	132.8	177.4
Chemical and related products n.e.c.	3298.5	3773.4	14.4	5484.7	6064.6	10.6	-2186.2	-2291.2
of which EU	1763.4	2157.9	22.4	4227.2	4657.6	10.2	-2463.8	-2499.7
Manufactured goods classified chiefly by material	8141.3	8570.6	5.3	7283.5	7272.4	-0.2	857.8	1298.2
of which EU	5431.9	5870.1	8.1	4362.3	4528.1	3.8	1069.6	1342.0
Machinery and transport equipment	7003.5	7997.8	14.2	10474.2	11364.2	8.5	-3470.7	-3366.4
of which EU	5156.9	5783.0	12.1	8115.1	8974.3	10.6	-2958.2	-3191.3
Miscellaneous manufactured articles	5363.2	5879.6	9.6	3022.9	3385.2	12.0	2340.3	2494.4
of which EU	4456.6	4597.4	3.2	2229.2	2430.4	9.0	2227.4	2167.0
Commodities and transactions n.e.c.	90.8	101.0	11.2	221.8	231.7	4.5	-131.0	-130.7
of which EU	59.5	73.6	23.7	191.8	207.3	8.1	-132.3	-133.7

¹Data are preliminary as of 11-th January 2016