

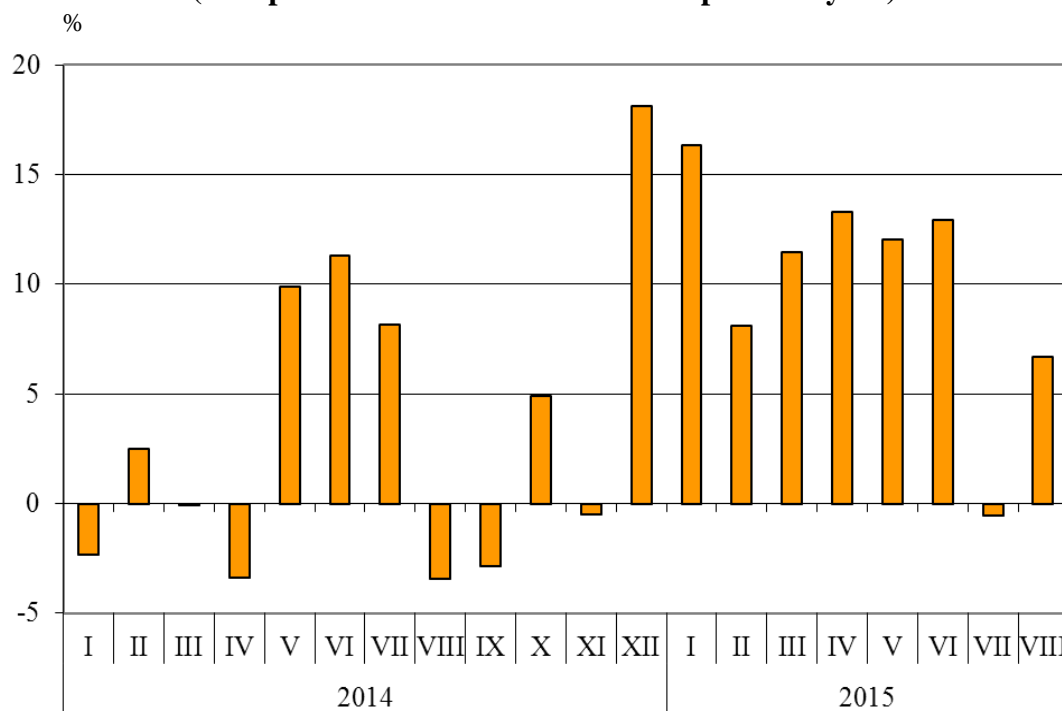


BULGARIAN TRADE WITH EU IN THE PERIOD JANUARY - AUGUST 2015 (PRELIMINARY DATA)

In the period **January - August 2015** Bulgarian **exports to the EU** increased by 9.7% compared to the corresponding period of 2014 and amounted to 19.2 Billion BGN (Annex, Table 1 and 2). Main trade partners of Bulgaria were Germany, Italy, Romania, Greece, France and Belgium which accounted for 69.8% of the exports to the EU Member States (Annex, Table 3).

In **August 2015** the exports to the EU increased by 6.7% compared to the corresponding month of the previous year and amounted to 2.5 Billion BGN.

**Figure 1. Nominal value¹ change of exports of Bulgaria to EU in the period 2014 - 2015
(Compared to the same month of the previous year)**



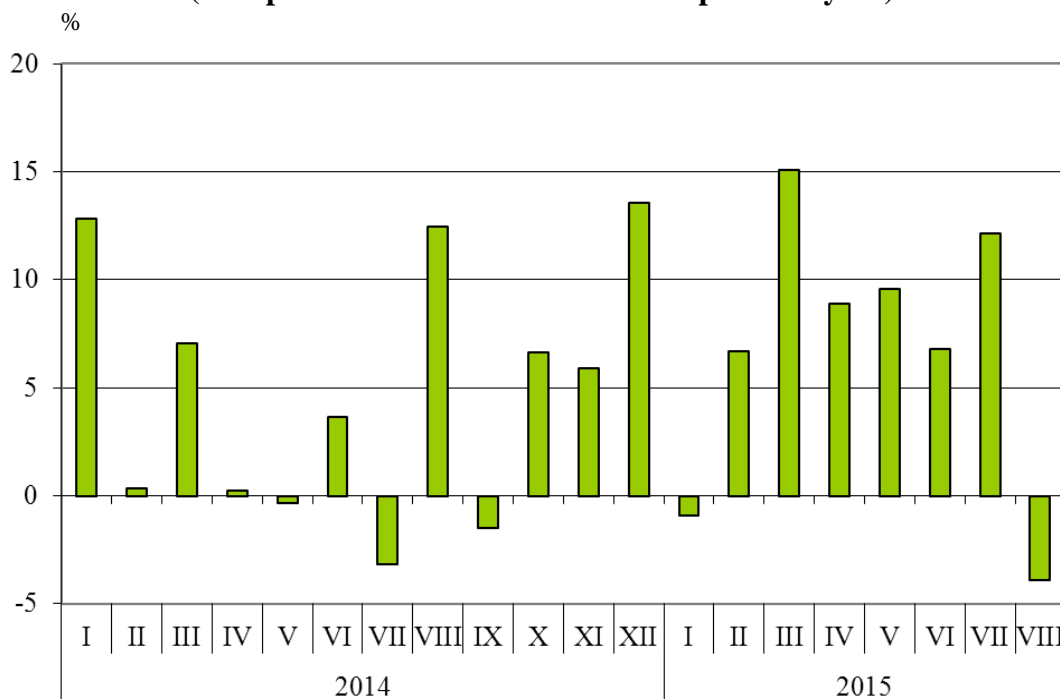
Bulgarian **imports from the EU** in the period January - August 2015 increased by 6.9% compared to the same period of 2014 and added up to 21.6 Billion BGN at CIF prices (Annex, Tables 1 and 2). The largest amounts were reported for the goods imported from Germany, Italy, Romania, Spain and Greece (Annex, Table 3).

In **August 2015** the Bulgarian imports from the EU Member States decreased by 3.9% compared to the corresponding month of the previous year and amounted to 2.4 Billion BGN at CIF prices.

¹ Value changes at current prices.



**Figure 2. Nominal value¹ change of imports of Bulgaria from EU in the period 2014 - 2015
(Compared to the same month of the previous year)**



The **foreign trade balance** of Bulgaria (export FOB - import CIF) **with the EU** in the period January - August 2015 was negative and added up to 2 328.9 Million BGN (Annex, Table 1). At FOB/FOB prices (after elimination of transport and insurance costs on imports) the trade balance was also negative and amounted to 876.2 Million BGN.

In the first eight months of **2015** compared to the same period of 2014 the largest growth **in the exports** of Bulgaria to the **EU** distributed according to the Standard International Trade Classification (Annex, Table 4) was recorded in the sections ‘Chemical and related products n.e.c.’ (19.6%) and ‘Mineral fuel, lubricants and related materials’ (17.7%). Fall was recorded in section ‘Beverages and tobacco’ (7.1%).

In **imports from the EU** the largest growth was reported in the section ‘Beverages and tobacco’ (21.1%) while the most notable fall was observed in section ‘Mineral fuel, lubricants and related materials’ (24.8%).

¹ Value changes at current prices.

Exports, imports and trade balance of Bulgaria in the period January - August 2014 and 2015¹ by months

Table 1

(Million BGN)

| Months/Periods | Exports - FOB | | | Imports - CIF | | | Imports - FOB ² | | | Trade balance - FOB/CIF | | | Trade balance - FOB/FOB ² | | |
|----------------------|----------------|----------------|----------------|----------------|----------------|----------------|----------------------------|----------------|----------------|-------------------------|----------------|----------------|--------------------------------------|----------------|----------------|
| | Total | EU | Non-EU | Total | EU | Non-EU | Total | EU | Non-EU | Total | EU | Non-EU | Total | EU | Non-EU |
| I.2014 | 3099.1 | 1970.5 | 1128.6 | 3955.8 | 2333.1 | 1622.7 | 3677.7 | 2172.5 | 1505.2 | -856.7 | -362.6 | -494.1 | -578.6 | -202.0 | -376.6 |
| II.2014 | 3226.8 | 2001.1 | 1225.7 | 3795.4 | 2466.6 | 1328.8 | 3535.1 | 2306.6 | 1228.5 | -568.6 | -465.5 | -103.1 | -308.3 | -305.5 | -2.8 |
| III.2014 | 3193.6 | 2171.8 | 1021.8 | 3935.8 | 2497.8 | 1438.0 | 3687.1 | 2341.3 | 1345.8 | -742.2 | -326.0 | -416.2 | -493.5 | -169.5 | -324.0 |
| I - III.2014 | 9519.5 | 6143.4 | 3376.1 | 11687.0 | 7297.5 | 4389.5 | 10899.9 | 6820.4 | 4079.5 | -2167.5 | -1154.1 | -1013.4 | -1380.4 | -677.0 | -703.4 |
| IV.2014 | 3468.6 | 2117.6 | 1351.0 | 4303.1 | 2630.3 | 1672.8 | 4017.5 | 2455.1 | 1562.4 | -834.5 | -512.7 | -321.8 | -548.9 | -337.5 | -211.4 |
| V.2014 | 3499.0 | 2065.0 | 1434.0 | 4132.0 | 2366.2 | 1765.8 | 3856.8 | 2213.1 | 1643.7 | -633.0 | -301.2 | -331.8 | -357.8 | -148.1 | -209.7 |
| VI.2014 | 3704.8 | 2271.5 | 1433.3 | 4168.0 | 2641.9 | 1526.1 | 3881.1 | 2464.1 | 1417.0 | -463.2 | -370.4 | -92.8 | -176.3 | -192.6 | 16.3 |
| IV - VI.2014 | 10672.4 | 6454.1 | 4218.3 | 12603.1 | 7638.4 | 4964.7 | 11755.4 | 7132.3 | 4623.1 | -1930.7 | -1184.3 | -746.4 | -1083.0 | -678.2 | -404.8 |
| I - VI.2014 | 20191.9 | 12597.5 | 7594.4 | 24290.1 | 14935.9 | 9354.2 | 22655.3 | 13952.7 | 8702.6 | -4098.2 | -2338.4 | -1759.8 | -2463.4 | -1355.2 | -1108.2 |
| VII.2014 | 4016.0 | 2636.7 | 1379.3 | 4397.0 | 2760.6 | 1636.4 | 4100.4 | 2576.8 | 1523.6 | -381.0 | -123.9 | -257.1 | -84.4 | 59.9 | -144.3 |
| VIII.2014 | 3801.9 | 2302.9 | 1499.0 | 4309.1 | 2465.1 | 1844.0 | 4002.5 | 2291.9 | 1710.6 | -507.2 | -162.2 | -345.0 | -200.6 | 11.0 | -211.6 |
| I - VIII.2014 | 28009.8 | 17537.1 | 10472.7 | 32996.2 | 20161.6 | 12834.6 | 30758.2 | 18821.4 | 11936.8 | -4986.4 | -2624.5 | -2361.9 | -2748.4 | -1284.3 | -1464.1 |
| I.2015 | 3389.2 | 2292.5 | 1096.7 | 3776.2 | 2312.2 | 1464.0 | 3499.1 | 2147.7 | 1351.4 | -387.0 | -19.7 | -367.3 | -109.9 | 144.8 | -254.7 |
| II.2015 | 3419.5 | 2162.9 | 1256.6 | 4118.0 | 2631.8 | 1486.2 | 3831.2 | 2453.7 | 1377.5 | -698.5 | -468.9 | -229.6 | -411.7 | -290.8 | -120.9 |
| III.2015 | 3921.8 | 2420.8 | 1501.0 | 4423.3 | 2873.9 | 1549.4 | 4134.3 | 2687.0 | 1447.3 | -501.5 | -453.1 | -48.4 | -212.5 | -266.2 | 53.7 |
| I - III.2015 | 10730.5 | 6876.2 | 3854.3 | 12317.5 | 7817.9 | 4499.6 | 11464.6 | 7288.4 | 4176.2 | -1587.0 | -941.7 | -645.3 | -734.1 | -412.2 | -321.9 |
| IV.2015 | 3899.9 | 2399.4 | 1500.5 | 4523.0 | 2864.6 | 1658.4 | 4203.4 | 2662.5 | 1540.9 | -623.1 | -465.2 | -157.9 | -303.5 | -263.1 | -40.4 |
| V.2015 | 3737.1 | 2313.2 | 1423.9 | 4200.3 | 2592.9 | 1607.4 | 3922.3 | 2424.4 | 1497.9 | -463.2 | -279.7 | -183.5 | -185.2 | -111.2 | -74.0 |
| VI.2015 | 4027.8 | 2564.7 | 1463.1 | 4425.8 | 2821.7 | 1604.1 | 4137.0 | 2639.9 | 1497.1 | -398.0 | -257.0 | -141.0 | -109.2 | -75.2 | -34.0 |
| IV - VI.2015 | 11664.8 | 7277.3 | 4387.5 | 13149.1 | 8279.2 | 4869.9 | 12262.7 | 7726.8 | 4535.9 | -1484.3 | -1001.9 | -482.4 | -597.9 | -449.5 | -148.4 |
| I - VI.2015 | 22395.3 | 14153.5 | 8241.8 | 25466.6 | 16097.1 | 9369.5 | 23727.3 | 15015.2 | 8712.1 | -3071.3 | -1943.6 | -1127.7 | -1332.0 | -861.7 | -470.3 |
| VII.2015 | 4099.8 | 2622.9 | 1476.9 | 4755.4 | 3096.4 | 1659.0 | 4420.4 | 2879.3 | 1541.1 | -655.6 | -473.5 | -182.1 | -320.6 | -256.4 | -64.2 |
| VIII.2015 | 3763.9 | 2457.4 | 1306.5 | 3818.1 | 2369.2 | 1448.9 | 3559.7 | 2215.5 | 1344.2 | -54.2 | 88.2 | -142.4 | 204.2 | 241.9 | -37.7 |
| I - VIII.2015 | 30259.0 | 19233.8 | 11025.2 | 34040.1 | 21562.7 | 12477.4 | 31707.4 | 20110.0 | 11597.4 | -3781.1 | -2328.9 | -1452.2 | -1448.4 | -876.2 | -572.2 |

¹ Data are preliminary as of 9-th November 2015.

² By data of BNB for the transport costs.



Table 2

**Value changes of exports and imports of Bulgaria in the period January - August 2015¹
compared to the same period of the previous year**

(Per cent)

| Months/Periods | Exports - FOB | | | Imports - CIF | | | Imports - FOB | | |
|-----------------|---------------|-------------|-------------|---------------|------------|-------------|---------------|------------|-------------|
| | Total | EU | Non-EU | Total | EU | Non-EU | Total | EU | Non-EU |
| I | 9.4 | 16.3 | -2.8 | -4.5 | -0.9 | -9.8 | -4.9 | -1.1 | -10.2 |
| II | 6.0 | 8.1 | 2.5 | 8.5 | 6.7 | 11.8 | 8.4 | 6.4 | 12.1 |
| III | 22.8 | 11.5 | 46.9 | 12.4 | 15.1 | 7.7 | 12.1 | 14.8 | 7.5 |
| I - III | 12.7 | 11.9 | 14.2 | 5.4 | 7.1 | 2.5 | 5.2 | 6.9 | 2.4 |
| IV | 12.4 | 13.3 | 11.1 | 5.1 | 8.9 | -0.9 | 4.6 | 8.4 | -1.4 |
| V | 6.8 | 12.0 | -0.7 | 1.7 | 9.6 | -9.0 | 1.7 | 9.5 | -8.9 |
| VI | 8.7 | 12.9 | 2.1 | 6.2 | 6.8 | 5.1 | 6.6 | 7.1 | 5.7 |
| IV - VI | 9.3 | 12.8 | 4.0 | 4.3 | 8.4 | -1.9 | 4.3 | 8.3 | -1.9 |
| I - VI | 10.9 | 12.4 | 8.5 | 4.8 | 7.8 | 0.2 | 4.7 | 7.6 | 0.1 |
| VII | 2.1 | -0.5 | 7.1 | 8.2 | 12.2 | 1.4 | 7.8 | 11.7 | 1.1 |
| VIII | -1.0 | 6.7 | -12.8 | -11.4 | -3.9 | -21.4 | -11.1 | -3.3 | -21.4 |
| I - VIII | 8.0 | 9.7 | 5.3 | 3.2 | 6.9 | -2.8 | 3.1 | 6.8 | -2.8 |

¹ Data are preliminary as of 9-th November 2015.

Table 3

Exports, imports and trade balance by groups of countries and main partner countries¹ of Bulgaria in the period January - August 2014 and 2015²

| Countries and groups of countries | Exports - FOB | | | Imports - CIF | | | Trade balance - FOB/CIF | |
|-----------------------------------|----------------|----------------|---|----------------|----------------|---|-------------------------|----------------|
| | 2014 | 2015 | Change compared to the same period of the previous year - % | 2014 | 2015 | Change compared to the same period of the previous year - % | 2014 | 2015 |
| | Million BGN | | | Million BGN | | | Million BGN | |
| Total | 28009.8 | 30259.0 | 8.0 | 32996.2 | 34040.1 | 3.2 | -4986.4 | -3781.1 |
| EU | 17537.1 | 19233.8 | 9.7 | 20161.6 | 21562.7 | 6.9 | -2624.5 | -2328.9 |
| Austria | 502.7 | 519.5 | 3.3 | 936.2 | 906.1 | -3.2 | -433.5 | -386.6 |
| Belgium | 1199.9 | 1174.3 | -2.1 | 682.1 | 747.7 | 9.6 | 517.8 | 426.6 |
| Croatia | 112.5 | 118.4 | 5.2 | 56.6 | 72.4 | 27.9 | 55.9 | 46.0 |
| Cyprus | 121.5 | 231.6 | 90.6 | 34.7 | 51.0 | 47.0 | 86.8 | 180.6 |
| Czech Republic | 389.8 | 489.9 | 25.7 | 745.4 | 705.5 | -5.4 | -355.6 | -215.6 |
| Denmark | 132.2 | 155.7 | 17.8 | 123.4 | 152.4 | 23.5 | 8.8 | 3.3 |
| Estonia | 23.2 | 23.4 | 0.9 | 23.8 | 13.9 | -41.6 | -0.6 | 9.5 |
| Finland | 84.6 | 83.4 | -1.4 | 64.2 | 66.9 | 4.2 | 20.4 | 16.5 |
| France | 1250.0 | 1272.1 | 1.8 | 1014.3 | 1052.7 | 3.8 | 235.7 | 219.4 |
| Germany | 3424.5 | 3820.0 | 11.5 | 3876.7 | 4362.7 | 12.5 | -452.2 | -542.7 |
| Greece | 1850.1 | 1917.2 | 3.6 | 1623.7 | 1589.8 | -2.1 | 226.4 | 327.4 |
| Hungary | 386.7 | 465.0 | 20.2 | 1086.8 | 1233.5 | 13.5 | -700.1 | -768.5 |
| Ireland | 30.4 | 29.4 | -3.3 | 101.9 | 106.6 | 4.6 | -71.5 | -77.2 |
| Italy | 2565.5 | 2794.7 | 8.9 | 2366.5 | 2506.5 | 5.9 | 199.0 | 288.2 |
| Latvia | 33.4 | 31.5 | -5.7 | 11.4 | 33.5 | 193.9 | 22.0 | -2.0 |
| Lithuania | 59.8 | 57.4 | -4.0 | 52.1 | 52.4 | 0.6 | 7.7 | 5.0 |
| Luxembourg | 3.5 | 3.4 | -2.9 | 89.8 | 104.1 | 15.9 | -86.3 | -100.7 |
| Malta | 44.4 | 69.4 | 56.3 | 134.7 | 13.6 | -89.9 | -90.3 | 55.8 |
| Netherlands | 631.8 | 679.2 | 7.5 | 877.0 | 1099.6 | 25.4 | -245.2 | -420.4 |
| Poland | 555.6 | 642.7 | 15.7 | 934.8 | 1008.1 | 7.8 | -379.2 | -365.4 |
| Portugal | 107.4 | 113.9 | 6.1 | 68.2 | 68.5 | 0.4 | 39.2 | 45.4 |
| Romania | 2260.2 | 2455.2 | 8.6 | 2316.3 | 2286.4 | -1.3 | -56.1 | 168.8 |
| Slovakia | 208.8 | 232.8 | 11.5 | 372.9 | 468.2 | 25.6 | -164.1 | -235.4 |
| Slovenia | 141.2 | 214.7 | 52.1 | 216.9 | 225.1 | 3.8 | -75.7 | -10.4 |
| Spain | 575.9 | 689.4 | 19.7 | 1553.3 | 1745.3 | 12.4 | -977.4 | -1055.9 |
| Sweden | 185.3 | 190.9 | 3.0 | 190.6 | 198.4 | 4.1 | -5.3 | -7.5 |
| United Kingdom | 616.0 | 714.5 | 16.0 | 583.6 | 592.1 | 1.5 | 32.4 | 122.4 |
| Not specified | 40.2 | 44.2 | 10.0 | 23.7 | 99.7 | 320.7 | 16.5 | -55.5 |

¹ Partner country:

- In case of exports (or dispatches) is the country (or Member State) of final destination of the goods.
- In case of imports (or arrivals) is the country (or Member State) of consignment of the goods.

² Data are preliminary as of 9th November 2015.

Table 3

Exports, imports and trade balance by groups of countries and main partner countries¹ of Bulgaria in the period January - August 2014 and 2015²

(Continued)

| Countries and groups of countries | Exports - FOB | | | Imports - CIF | | | Trade balance - FOB/CIF | |
|-----------------------------------|----------------|----------------|---|----------------|----------------|---|-------------------------|----------------|
| | 2014 | 2015 | Change compared to the same period of the previous year - % | 2014 | 2015 | Change compared to the same period of the previous year - % | 2014 | 2015 |
| | Million BGN | | | Million BGN | | | Million BGN | |
| Non EU countries | 10472.7 | 11025.2 | 5.3 | 12834.6 | 12477.4 | -2.8 | -2361.9 | -1452.2 |
| CIS³ | 1146.2 | 1036.1 | -9.6 | 5864.3 | 4891.4 | -16.6 | -4718.1 | -3855.3 |
| of which: | | | | | | | | |
| Kazakhstan | 34.8 | 28.5 | -18.1 | 48.6 | 34.3 | -29.4 | -13.8 | -5.8 |
| Russian Federation | 666.1 | 525.9 | -21.0 | 4915.3 | 4142.8 | -15.7 | -4249.2 | -3616.9 |
| Ukraine | 193.2 | 260.9 | 35.0 | 774.4 | 618.8 | -20.1 | -581.2 | -357.9 |
| OECD⁴ | 3626.8 | 3839.0 | 5.9 | 2960.5 | 3141.9 | 6.1 | 666.3 | 697.1 |
| of which: | | | | | | | | |
| Canada | 42.7 | 56.5 | 32.3 | 28.3 | 36.3 | 28.3 | 14.4 | 20.2 |
| Israel | 152.5 | 111.8 | -26.7 | 96.0 | 53.0 | -44.8 | 56.5 | 58.8 |
| Japan | 36.3 | 54.3 | 49.6 | 110.6 | 100.4 | -9.2 | -74.3 | -46.1 |
| Korea, Republic of | 119.3 | 82.9 | -30.5 | 106.6 | 107.9 | 1.2 | 12.7 | -25.0 |
| Turkey | 2625.5 | 2742.7 | 4.5 | 1909.3 | 1942.4 | 1.7 | 716.2 | 800.3 |
| United States | 382.6 | 488.3 | 27.6 | 412.4 | 325.7 | -21.0 | -29.8 | 162.6 |
| EFTA⁵ | 206.9 | 206.1 | -0.4 | 253.8 | 270.2 | 6.5 | -46.9 | -64.1 |
| of which: | | | | | | | | |
| Norway | 40.7 | 44.6 | 9.6 | 24.7 | 21.3 | -13.8 | 16.0 | 23.3 |
| Switzerland | 163.3 | 159.7 | -2.2 | 228.2 | 246.0 | 7.8 | -64.9 | -86.3 |

¹ Partner country:

- In case of exports (or dispatches) is the country (or Member State) of final destination of the goods.

- In case of imports (or arrivals) is the country (or Member State) of consignment of the goods.

² Data are preliminary as of 9th November 2015.

³ CIS includes: Azerbaijan; Armenia; Belarus; Kazakhstan; Kyrgyz, Republic; Moldova, Republic of; Russian Federation; Tajikistan; Turkmenistan; Uzbekistan and Ukraine.

⁴ OECD includes: Australia; Virgin Islands (US); United States; Iceland; Canada; Mexico; New Zealand; Norway; Korea, Republic of; Turkey; Switzerland; Japan; Israel and Chile.

⁵ EFTA includes: Norway; Switzerland; Iceland and Liechtenstein.

Table 3

Exports, imports and trade balance by groups of countries and main partner countries¹ of Bulgaria in the period January - August 2014 and 2015²

(Continued and end)

| Countries and groups of countries | Exports - FOB | | | Imports - CIF | | | Trade balance - FOB/CIF | |
|---|---------------|-------|---|---------------|--------|---|-------------------------|--------|
| | 2014 | 2015 | Change compared to the same period of the previous year - % | 2014 | 2015 | Change compared to the same period of the previous year - % | 2014 | 2015 |
| | Million BGN | | | Million BGN | | | Million BGN | |
| Countries not included in the upper groups | | | | | | | | |
| Albania | 69.1 | 78.2 | 13.2 | 20.1 | 23.0 | 14.4 | 49.0 | 55.2 |
| Bosnia and Herzegovina | 51.1 | 79.6 | 55.8 | 45.0 | 40.5 | -10.0 | 6.1 | 39.1 |
| Brazil | 17.9 | 37.4 | 108.9 | 67.9 | 46.3 | -31.8 | -50.0 | -8.9 |
| China | 706.5 | 758.2 | 7.3 | 1092.2 | 1254.4 | 14.9 | -385.7 | -496.2 |
| Egypt | 275.8 | 421.6 | 52.9 | 212.7 | 104.6 | -50.8 | 63.1 | 317.0 |
| Former Yugoslav Republic of Macedonia | 456.3 | 488.0 | 6.9 | 331.7 | 346.9 | 4.6 | 124.6 | 141.1 |
| Georgia | 252.8 | 209.0 | -17.3 | 303.5 | 332.7 | 9.6 | -50.7 | -123.7 |
| India | 56.7 | 73.5 | 29.6 | 138.6 | 183.5 | 32.4 | -81.9 | -110.0 |
| Indonesia | 35.2 | 37.3 | 6.0 | 38.4 | 44.6 | 16.1 | -3.2 | -7.3 |
| Iran, Islamic Republic of | 86.2 | 199.5 | 131.4 | 16.4 | 6.8 | -58.5 | 69.8 | 192.7 |
| Peru | 5.0 | 4.4 | -12.0 | 23.3 | 23.4 | 0.4 | -18.3 | -19.0 |
| Serbia | 460.8 | 539.9 | 17.2 | 410.1 | 474.4 | 15.7 | 50.7 | 65.5 |
| Singapore | 782.6 | 511.3 | -34.7 | 21.5 | 31.9 | 48.4 | 761.1 | 479.4 |
| South Africa | 40.6 | 64.5 | 58.9 | 30.5 | 15.5 | -49.2 | 10.1 | 49.0 |
| Syrian Arab Republic | 103.6 | 38.8 | -62.5 | 27.1 | 14.6 | -46.1 | 76.5 | 24.2 |
| Taiwan | 25.8 | 31.1 | 20.5 | 104.5 | 153.3 | 46.7 | -78.7 | -122.2 |
| United Arab Emirates | 345.7 | 283.1 | -18.1 | 51.1 | 120.8 | 136.4 | 294.6 | 162.3 |
| Viet Nam | 22.2 | 41.4 | 86.5 | 56.8 | 65.6 | 15.5 | -34.6 | -24.2 |

¹ Partner country:

- In case of exports (or dispatches) is the country (or Member State) of final destination of the goods.
- In case of imports (or arrivals) is the country (or Member State) of consignment of the goods.

² Data are preliminary as of 9th November 2015.



Exports, imports and trade balance of Bulgaria by sections of SITC, rev.4 in the period January - August 2014 and 2015¹

| Sections by SITC | Exports - FOB | | | Imports - CIF | | | Trade balance - FOB/CIF | |
|---|----------------|----------------|---|----------------|----------------|---|-------------------------|----------------|
| | 2014 | 2015 | Change compared to the same period of the previous year - % | 2014 | 2015 | Change compared to the same period of the previous year - % | 2014 | 2015 |
| | Million BGN | | | Million BGN | | | Million BGN | |
| Total | 28009.8 | 30259.0 | 8.0 | 32996.2 | 34040.1 | 3.2 | -4986.4 | -3781.1 |
| of which EU | 17537.1 | 19233.8 | 9.7 | 20161.6 | 21562.7 | 6.9 | -2624.5 | -2328.9 |
| Food and live animals | 2749.5 | 3048.6 | 10.9 | 2373.2 | 2570.8 | 8.3 | 376.3 | 477.8 |
| of which EU | 1858.6 | 1969.0 | 5.9 | 1989.2 | 2043.3 | 2.7 | -130.6 | -74.3 |
| Beverages and tobacco | 559.6 | 545.3 | -2.6 | 425.9 | 449.4 | 5.5 | 133.7 | 95.9 |
| of which EU | 200.3 | 186.1 | -7.1 | 285.8 | 346.0 | 21.1 | -85.5 | -159.9 |
| Crude materials, inedible (except fuel) | 1982.7 | 2060.7 | 3.9 | 2729.1 | 3158.5 | 15.7 | -746.4 | -1097.8 |
| of which EU | 1171.1 | 1268.5 | 8.3 | 1628.1 | 1788.9 | 9.9 | -457.0 | -520.4 |
| Mineral fuel, lubricants and related materials | 3676.5 | 3388.8 | -7.8 | 6806.4 | 5544.6 | -18.5 | -3129.9 | -2155.8 |
| of which EU | 816.0 | 960.2 | 17.7 | 1254.1 | 943.4 | -24.8 | -438.1 | 16.8 |
| Animals and vegetable oils, fats and waxes | 236.4 | 310.7 | 31.4 | 126.1 | 108.2 | -14.2 | 110.3 | 202.5 |
| of which EU | 206.8 | 218.8 | 5.8 | 98.9 | 75.7 | -23.5 | 107.9 | 143.1 |
| Chemical and related products n.e.c. | 2547.6 | 2975.3 | 16.8 | 4349.3 | 4814.9 | 10.7 | -1801.7 | -1839.6 |
| of which EU | 1379.0 | 1648.7 | 19.6 | 3351.6 | 3708.5 | 10.6 | -1972.6 | -2059.8 |
| Manufactured goods classified chiefly by material | 6452.9 | 6952.2 | 7.7 | 5448.6 | 5759.3 | 5.7 | 1004.3 | 1192.9 |
| of which EU | 4279.6 | 4784.8 | 11.8 | 3380.5 | 3592.6 | 6.3 | 899.1 | 1192.2 |
| Machinery and transport equipment | 5497.6 | 6259.2 | 13.9 | 8241.1 | 8865.3 | 7.6 | -2743.5 | -2606.1 |
| of which EU | 4044.3 | 4531.1 | 12.0 | 6320.9 | 7027.5 | 11.2 | -2276.6 | -2496.4 |
| Miscellaneous manufactured articles | 4235.6 | 4635.0 | 9.4 | 2322.3 | 2584.5 | 11.3 | 1913.3 | 2050.5 |
| of which EU | 3535.6 | 3606.3 | 2.0 | 1702.9 | 1871.4 | 9.9 | 1832.7 | 1734.9 |
| Commodities and transactions n.e.c. | 71.4 | 83.2 | 16.5 | 174.2 | 184.6 | 6.0 | -102.8 | -101.4 |
| of which EU | 45.8 | 60.3 | 31.7 | 149.6 | 165.4 | 10.6 | -103.8 | -105.1 |

¹Data are preliminary as of 9th November 2015