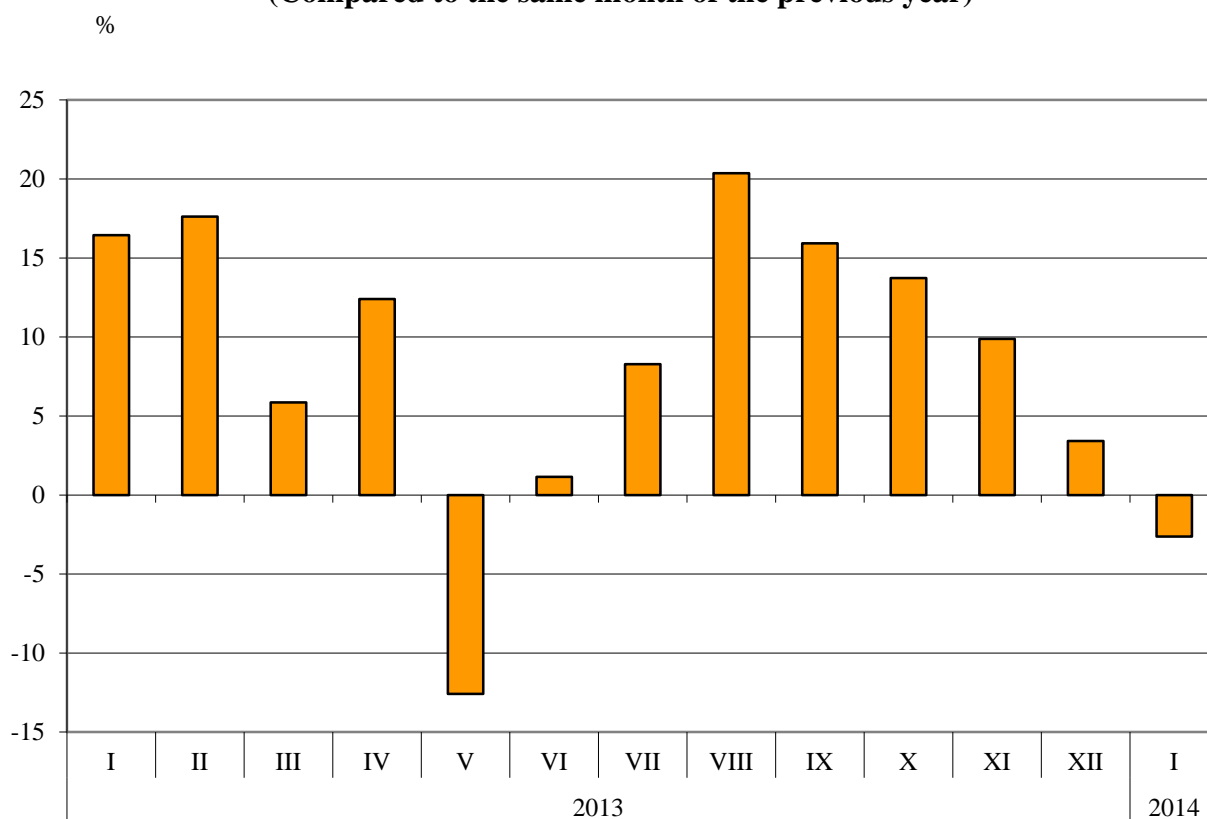




## BULGARIAN TRADE WITH EU IN JANUARY 2014 (PRELIMINARY DATA)

In **January 2014** Bulgarian **exports to the EU** decreased by 2.6% compared to the corresponding month of the previous year and amounted to 2.0 Billion BGN (Annex, Table 1 and 2). Main trade partners of Bulgaria were Germany, Italy, Greece, Romania, France and Belgium which accounted for 70.6% of the exports to the EU Member States (Annex, Table 3).

**Figure 1. Nominal value<sup>1</sup> change of exports of Bulgaria to EU for the period 2013 – 2014  
(Compared to the same month of the previous year)**

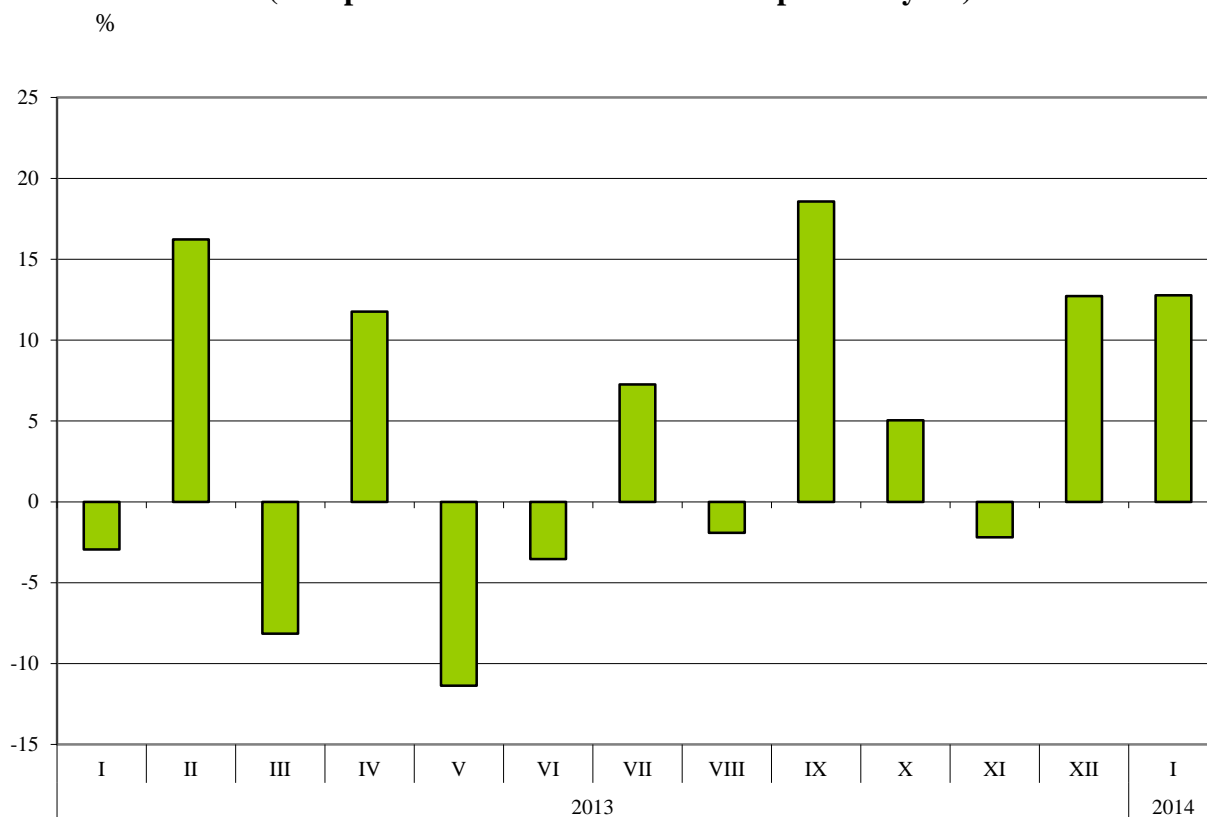


Bulgarian **imports from the EU** in January 2014 increased by 12.8% compared to the corresponding month of the previous year and added up to 2.3 Billion BGN at CIF prices (Annex, Tables 1 and 2). The largest amounts were reported for the goods imported from Germany, Italy, Romania, Spain and Greece (Annex, Table 3).

<sup>1</sup> Value changes at current prices.



**Figure 2. Nominal value<sup>1</sup> change of imports of Bulgaria from EU for the period 2013 – 2014  
(Compared to the same month of the previous year)**



The **foreign trade balance** of Bulgaria (export FOB - import CIF) **with the EU** in January 2014 was negative and added up to 365.6 Million BGN (Annex, Table 1). At FOB/FOB prices (after elimination of transport and insurance costs on imports) the trade balance was also negative and amounted to 256.9 Million BGN.

In January **2014** compared to the corresponding month of the previous year the largest growth (71.8%) **in the exports** of Bulgaria **to the EU** distributed according to the Standard International Trade Classification (Annex, Table 4) was recorded in the section “Animals and vegetable oils, fats and waxes”. The most notable fall was recorded in sections “Mineral fuel, lubricants and related materials” (56.4%) and “Beverages and tobacco” (34.9%).

In **imports from the EU** the largest growth (64.8%) was reported in section “Crude materials, inedible (except fuels)”<sup>2</sup> while the most notable fall (4.7%) was observed in section “Animals and vegetable oils, fats and waxes”.

<sup>1</sup> Value changes at current prices.

<sup>2</sup> The section includes following divisions: raw hides, skins and furskins; oil-seeds and oleaginous fruits; crude rubber; cork and wood; pulp and waste paper; textile fibres and their wastes; crude fertilizers and crude minerals; metalliferous ores and metal scrap; crude animal and vegetable materials, n.e.s.



Annex

Exports, imports and trade balance of Bulgaria in January 2013<sup>1</sup> and 2014<sup>1</sup> by months

Table 1  
(Million BGN)

Months/Periods	Exports - FOB			Imports - CIF			Imports - FOB <sup>2</sup>			Trade balance - FOB/CIF			Trade balance - FOB/FOB <sup>2</sup>		
	Total	EU <sup>3</sup>	Non EU <sup>4</sup>	Total	EU <sup>3</sup>	Non EU <sup>4</sup>	Total	EU <sup>3</sup>	Non EU <sup>4</sup>	Total	EU <sup>3</sup>	Non EU <sup>4</sup>	Total	EU <sup>3</sup>	Non EU <sup>4</sup>
I.2013	3474.6	2019.1	1455.5	3726.1	2067.6	1658.5	3540.1	1974.3	1565.8	-251.5	-48.5	-203.0	-65.5	44.8	-110.3
I.2014	3099.6	1966.1	1133.5	3956.7	2331.7	1625.0	3760.7	2223.0	1537.7	-857.1	365.6	-491.5	661.1	-256.9	-404.2

<sup>1</sup> Data are preliminary as of 11.04.2014.

<sup>2</sup> By data of BNB for the transport costs.

<sup>3</sup> EU including Croatia also for the periods prior 1<sup>st</sup> of July 2013.

<sup>4</sup> Non EU excluding Croatia also for the periods prior 1<sup>st</sup> of July 2013.

Table 2

Value changes of exports and imports of Bulgaria in January 2014<sup>1</sup> compared to the same month of the previous year

(Per cent)

Months/Periods	Exports - FOB			Imports - CIF			Imports - FOB		
	Total	EU <sup>2</sup>	Non EU <sup>3</sup>	Total	EU <sup>2</sup>	Non EU <sup>3</sup>	Total	EU <sup>2</sup>	Non EU <sup>3</sup>
I	-10.8	-2.6	-22.1	6.2	12.8	-2.0	6.2	12.6	-1.8

<sup>1</sup> Data are preliminary as of 11.04.2014.

<sup>2</sup> EU including Croatia also for the periods prior 1<sup>st</sup> of July 2013.

<sup>3</sup> Non EU excluding Croatia also for the periods prior 1<sup>st</sup> of July 2013.



**Table 3**  
**Exports, imports and trade balance by groups of countries and main trade partners<sup>1</sup> of Bulgaria in January 2013<sup>2</sup> and 2014<sup>2</sup>**

Countries and groups of countries	Exports - FOB			Imports - CIF			Trade balance - FOB/CIF	
	2013	2014	Change compared to the same period of the previous year - %	2013	2014	Change compared to the same period of the previous year - %	2013	2014
	Million Levs			Million Levs			Million Levs	
<b>Total</b>	<b>3474.6</b>	<b>3099.6</b>	<b>-10.8</b>	<b>3726.1</b>	<b>3956.7</b>	<b>6.2</b>	<b>-251.5</b>	<b>-857.1</b>
<b>EU<sup>3</sup></b>	<b>2019.1</b>	<b>1966.1</b>	<b>-2.6</b>	<b>2067.6</b>	<b>2331.7</b>	<b>12.8</b>	<b>-48.5</b>	<b>-365.6</b>
Austria	56.4	63.7	12.9	114.3	96.8	-15.3	-57.9	-33.1
Belgium	61.0	110.3	80.8	56.5	68.8	21.8	4.5	41.5
Croatia	8.1	8.9	9.9	3.9	4.1	5.1	4.2	4.8
Cyprus	13.1	17.4	32.8	5.3	3.3	-37.7	7.8	14.1
Czech Republic	48.1	48.2	0.2	65.7	66.2	0.8	-17.6	-18.0
Denmark	19.3	14.6	-24.4	10.7	12.1	13.1	8.6	2.5
Estonia	2.5	3.4	36.0	7.6	0.9	-88.2	-5.1	2.5
Finland	5.7	5.7	0.0	5.2	3.7	-28.8	0.5	2.0
France	151.6	142.0	-6.3	110.4	114.0	3.3	41.2	28.0
Germany	485.5	457.9	-5.7	376.2	436.9	16.1	109.3	21.0
Greece	268.7	193.6	-27.9	207.0	184.0	-11.1	61.7	9.6
Hungary	41.2	47.4	15.0	120.2	129.2	7.5	-79.0	-81.8
Ireland	2.5	3.9	56.0	12.5	11.4	-8.8	-10.0	-7.5
Italy	337.5	303.3	-10.1	265.9	303.3	14.1	71.6	0.0
Latvia	9.2	4.0	-56.5	5.7	0.8	-86.0	3.5	3.2
Lithuania	5.5	5.9	7.3	6.8	6.5	-4.4	-1.3	-0.6
Luxembourg	0.4	0.2	-50.0	6.9	9.6	39.1	-6.5	-9.4
Malta	2.9	6.1	110.3	0.4	1.0	150.0	2.5	5.1
Netherlands	85.1	85.2	0.1	99.5	107.1	7.6	-14.4	-21.9
Poland	53.5	62.6	17.0	106.2	101.5	-4.4	-52.7	-38.9
Portugal	20.3	11.3	-44.3	4.2	11.3	169.0	16.1	0.0
Romania	179.4	181.7	1.3	225.1	277.7	23.4	-45.7	-96.0
Slovakia	21.3	23.3	9.4	45.4	43.0	-5.3	-24.1	-19.7
Slovenia	13.4	19.8	47.8	24.8	26.5	6.9	-11.4	-6.7
Spain	39.5	54.6	38.2	109.0	231.9	112.8	-69.5	-177.3
Sweden	16.0	20.2	26.3	19.0	17.4	-8.4	-3.0	2.8
United Kingdom	69.9	69.7	-0.3	52.4	60.9	16.2	17.5	8.8
Not specified	1.5	1.2	-20.0	0.8	1.8	125.0	0.7	-0.6

<sup>1</sup> Partner country:

- In case of exports (or dispatches) is the country (or Member State) of final destination of the goods
- In case of imports (or arrivals) is the country (or Member State) of consignment of the goods.

<sup>2</sup> Data are preliminary as of 11.04.2013.

<sup>3</sup> EU including Croatia



**Table 3**  
**Exports, imports and trade balance by groups of countries and main trade partners<sup>1</sup> of Bulgaria in**  
**January 2013<sup>2</sup> and 2014<sup>2</sup>**

(Continued)

Countries and groups of countries	Exports - FOB			Imports - CIF			Trade balance - FOB/CIF	
	2013	2014	Change compared to the same period of the previous year - %	2013	2014	Change compared to the same period of the previous year - %	2013	2014
	Million Levs			Million Levs			Million Levs	
<b>Non EU countries<sup>3</sup></b>	<b>1455.5</b>	<b>1133.5</b>	<b>-22.1</b>	<b>1658.5</b>	<b>1625.0</b>	<b>-2.0</b>	<b>-203.0</b>	<b>-491.5</b>
<b>CIS<sup>4</sup></b>	<b>176.8</b>	<b>104.2</b>	<b>-41.1</b>	<b>925.5</b>	<b>688.0</b>	<b>-25.7</b>	<b>-748.7</b>	<b>-583.8</b>
of which:								
Kazakhstan	11.7	5.1	-56.4	6.6	20.3	207.6	5.1	-15.2
Russian Federation	73.2	60.2	-17.8	842.4	571.0	-32.2	-769.2	-510.8
Ukraine	71.3	11.7	-83.6	70.7	90.3	27.7	0.6	-78.6
<b>OECD<sup>5</sup></b>	<b>485.0</b>	<b>402.2</b>	<b>-17.1</b>	<b>336.5</b>	<b>415.6</b>	<b>23.5</b>	<b>148.5</b>	<b>-13.4</b>
of which:								
Canada	15.4	4.0	-74.0	2.5	2.6	4.0	12.9	1.4
Israel	6.5	7.5	15.4	6.7	5.4	-19.4	-0.2	2.1
Japan	3.2	4.0	25.0	10.3	12.1	17.5	-7.1	-8.1
Korea, Republic of	27.4	5.8	-78.8	12.6	15.5	23.0	14.8	-9.7
Turkey	330.3	296.7	-10.2	161.3	297.8	84.6	169.0	-1.1
United States	62.5	44.6	-28.6	26.8	40.0	49.3	35.7	4.6
<b>EFTA<sup>6</sup></b>	<b>32.6</b>	<b>32.0</b>	<b>-1.8</b>	<b>34.4</b>	<b>40.4</b>	<b>17.4</b>	<b>-1.8</b>	<b>-8.4</b>
of which:								
Norway	4.5	5.2	15.6	1.5	3.1	106.7	3.0	2.1
Switzerland	26.1	26.2	0.4	32.9	37.0	12.5	-6.8	-10.8

<sup>1</sup> Partner country:

- In case of exports (or dispatches) is the country (or Member State) of final destination of the goods
- In case of imports (or arrivals) is the country (or Member State) of consignment of the goods.

<sup>2</sup> Data are preliminary as of 11.04.2013.

<sup>3</sup> Non EU excluding Croatia.

<sup>4</sup> CIS includes: Azerbaijan; Armenia; Belarus; Kazakhstan; Kyrgyz, Republic; Moldova, Republic of; Russian Federation; Tajikistan; Turkmenistan; Uzbekistan and Ukraine.

<sup>5</sup> OECD includes: Australia; Virgin Islands (US); United States; Iceland; Canada; Mexico; New Zealand; Norway; Korea, Republic of; Turkey; Switzerland; Japan; Israel and Chile.

<sup>6</sup> EFTA includes: Norway; Switzerland; Iceland and Liechtenstein.



**Table 3**  
**Exports, imports and trade balance by groups of countries and main trade partners<sup>1</sup> of Bulgaria in**  
**January 2013<sup>2</sup> and 2014<sup>2</sup>**

(Continued and end)

Countries and groups of countries	Exports - FOB			Imports - CIF			Trade balance - FOB/CIF	
	2013	2014	Change compared to the same period of the previous year - %	2013	2014	Change compared to the same period of the previous year - %	2013	2014
	Million Levs			Million Levs			Million Levs	
<b>Countries not included in the upper groups</b>								
Albania	5.0	7.6	52.0	2.5	3.5	40.0	2.5	4.1
Bosnia and Herzegovina	4.5	5.0	11.1	2.9	4.9	69.0	1.6	0.1
Brazil	1.2	2.1	75.0	5.3	8.4	58.5	-4.1	-6.3
China	101.2	79.0	-21.9	127.2	148.3	16.6	-26.0	-69.3
Egypt	22.1	19.1	-13.6	10.9	97.6	795.4	11.2	-78.5
Former Yugoslav Republic of Macedonia	54.1	50.0	-7.6	49.0	37.7	-23.1	5.1	12.3
Georgia	30.4	18.4	-39.5	36.4	32.2	-11.5	-6.0	-13.8
India	2.9	4.3	48.3	19.9	20.0	0.5	-17.0	-15.7
Indonesia	5.9	2.1	-64.4	4.9	3.5	-28.6	1.0	-1.4
Iran, Islamic Republic of	2.9	5.9	103.4	0.5	0.3	-40.0	2.4	5.6
Peru	0.6	0.6	0.0	4.9	1.7	-65.3	-4.3	-1.1
Serbia	64.6	42.2	-34.7	35.9	48.0	33.7	28.7	-5.8
Singapore	0.4	68.8	17100.0	3.8	4.2	10.5	-3.4	64.6
South Africa	3.4	2.3	-32.4	5.1	4.4	-13.7	-1.7	-2.1
Syrian Arab Republic	13.2	5.1	-61.4	2.4	6.4	166.7	10.8	-1.3
Taiwan	4.7	3.0	-36.2	14.2	13.5	-4.9	-9.5	-10.5
United Arab Emirates	50.0	74.7	49.4	10.0	8.8	-12.0	40.0	65.9
Viet Nam	2.4	2.2	-8.3	8.3	7.0	-15.7	-5.9	-4.8

<sup>1</sup> Partner country:

- In case of exports (or dispatches) is the country (or Member State) of final destination of the goods
- In case of imports (or arrivals) is the country (or Member State) of consignment of the goods.

<sup>2</sup> Data are preliminary as of 11.04.2013.



**Table 4**  
**Exports, imports and trade balance of Bulgaria by sections of SITC, rev.4 in January 2013<sup>1</sup> and 2014<sup>1</sup>**

Sections by SITC	Exports - FOB			Imports - CIF			Trade balance - FOB/CIF	
	2013	2014	Change compared to the same period of the previous year - %	2013	2014	Change compared to the same period of the previous year - %	2013	2014
	Million BGN			Million BGN			Million BGN	
<b>Total</b>	<b>3474.6</b>	<b>3099.6</b>	<b>-10.8</b>	<b>3726.1</b>	<b>3956.7</b>	<b>6.2</b>	<b>-251.5</b>	<b>-857.1</b>
<b>of which EU<sup>2</sup></b>	<b>2019.1</b>	<b>1966.1</b>	<b>-2.6</b>	<b>2067.6</b>	<b>2331.7</b>	<b>12.8</b>	<b>-48.5</b>	<b>-365.6</b>
Food and live animals	288.9	261.9	-9.3	273.6	267.7	-2.2	15.3	-5.8
of which EU	199.0	166.0	-16.6	228.9	222.5	-2.8	-29.9	-56.5
Beverages and tobacco	99.6	76.4	-23.3	35.4	55.0	55.4	64.2	21.4
of which EU	41.6	27.1	-34.9	25.3	24.4	-3.6	16.3	2.7
Crude materials, inedible (except fuel)	287.8	209.2	-27.3	365.6	397.9	8.8	-77.8	-188.7
of which EU	120.3	120.2	-0.1	156.0	257.1	64.8	-35.7	-136.9
Mineral fuel, lubricants and related materials	636.8	381.1	-40.2	968.7	947.1	-2.2	-331.9	-566.0
of which EU	140.0	61.1	-56.4	139.3	191.0	37.1	0.7	-129.9
Animals and vegetable oils, fats and waxes	25.6	35.5	38.7	15.9	13.5	-15.1	9.7	22.0
of which EU	18.1	31.1	71.8	10.6	10.1	-4.7	7.5	21.0
Chemical and related products n.e.c.	284.8	267.7	-6.0	485.1	507.4	4.6	-200.3	-239.7
of which EU	153.9	154.7	0.5	361.7	371.6	2.7	-207.8	-216.9
Manufactured goods classified chiefly by material	811.7	727.3	-10.4	553.2	591.0	6.8	258.5	136.3
of which EU	528.6	485.5	-8.2	335.4	344.2	2.6	193.2	141.3
Machinery and transport equipment	562.3	611.0	8.7	798.2	890.6	11.6	-235.9	-279.6
of which EU	415.0	462.7	11.5	636.4	698.0	9.7	-221.4	-235.3
Miscellaneous manufactured articles	469.1	521.2	11.1	217.1	264.8	22.0	252.0	256.4
of which EU	401.1	453.7	13.1	162.5	195.2	20.1	238.6	258.5
Commodities and transactions n.e.c.	8.0	8.3	3.7	13.3	21.7	63.2	-5.3	-13.4
of which EU	1.5	4.0	166.7	11.5	17.6	53.0	-10.0	-13.6

<sup>1</sup> Data are preliminary as of 11.04.2014.

<sup>2</sup> EU including Croatia.