

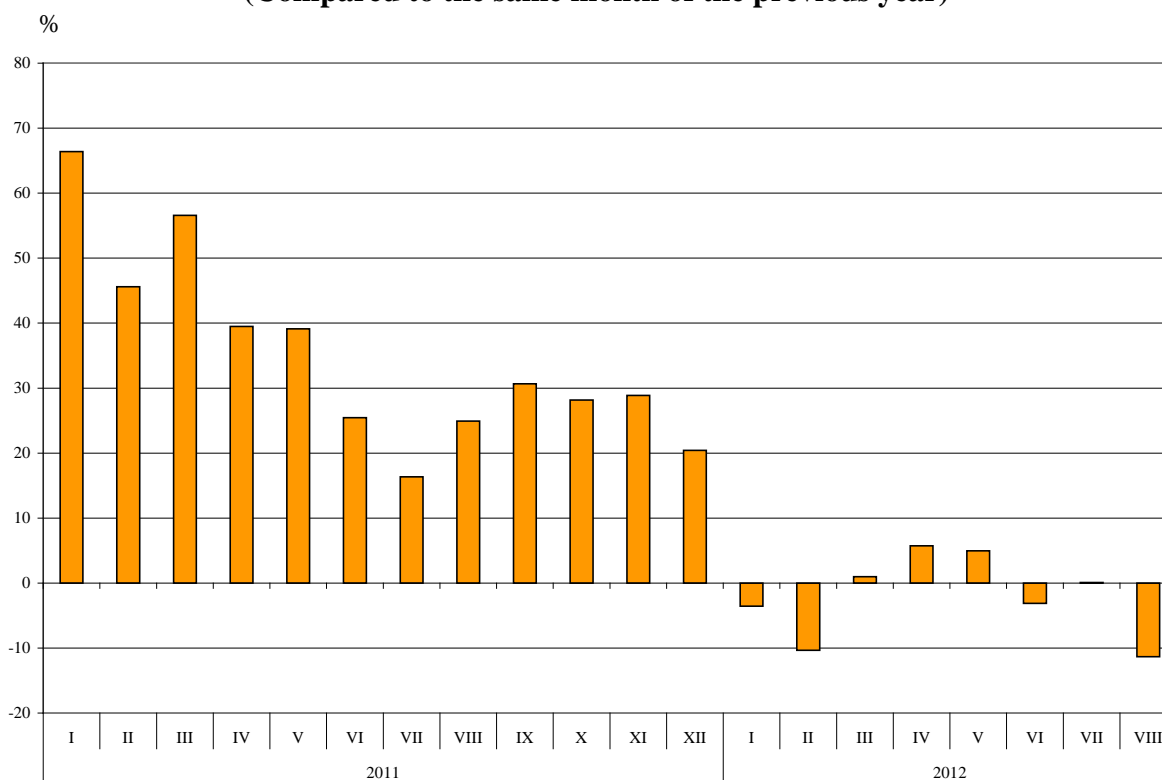


BULGARIAN TRADE WITH EU FOR THE PERIOD JANUARY - AUGUST 2012 (PRELIMINARY DATA)

In the period **January - August 2012** the Bulgarian **exports to the EU** decreased by 2.1% compared to the corresponding period of the previous year and amounted to 15.7 Billion Levs (Annex, Table 1 and 2). The main trade partners of Bulgaria were Germany, Italy, Romania, Greece, France and Belgium that formed 71.1% of the exports to the EU Member States (Annex, Table 3).

In August 2012 the exports to the EU decreased by 11.3% compared to the corresponding month of the previous year and amounted to 2.0 Billion Levs.

**Figure 1. Nominal value¹ change of exports to EU for the period 2011 – 2012
(Compared to the same month of the previous year)**



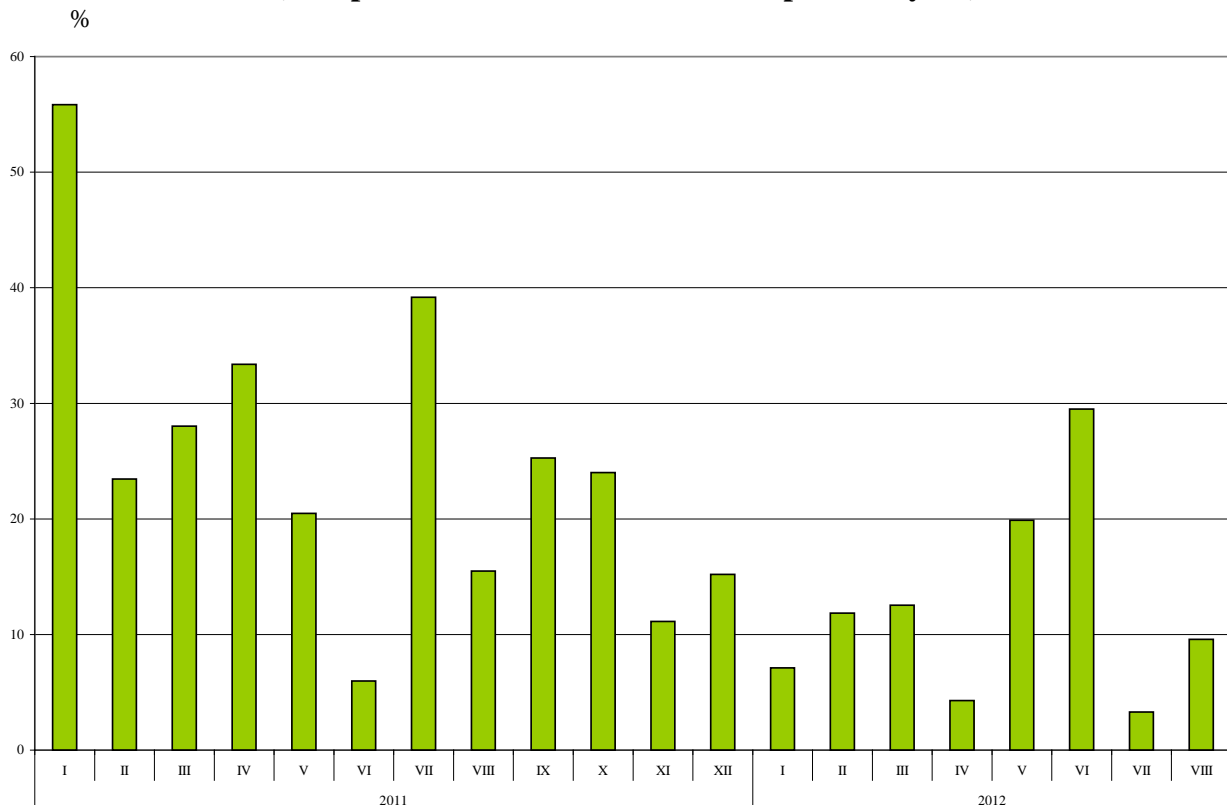
Bulgarian **imports from the EU** in the period January - August 2012 increased by 12.0% compared to the corresponding period of the previous year and added up to 19.3 Billion Levs at CIF prices (Annex, Tables 1 and 2). The largest amounts were reported for the goods imported from Germany, Romania, Italy, Greece and Spain (Annex, Table 3).

¹ Value changes at current prices.



In August 2012 the Bulgarian imports from the EU Member States grew by 9.6% compared to the corresponding month of the previous year and added up to 2.2 Billion Levs at CIF prices.

**Figure 2. Nominal value¹ change of imports from EU for the period 2011 – 2012
(Compared to the same month of the previous year)**



The **foreign trade balance** of Bulgaria (export FOB - import CIF) **with EU** in the period January – August 2012 was negative and added up to 3 588.2 Million Levs (Annex, Table 1). At FOB/FOB prices (after elimination of transport and insurance costs on imports) the trade balance was also negative and amounted to 2 826.6 Million Levs.

In the **first eight months of 2012** compared to the corresponding period of the previous year the largest growth (37.1%) **in the exports** of Bulgaria **to EU** distributed according to the Standard International Trade Classification (Annex, Table 4) was recorded in the section “Mineral fuels, lubricants and related materials” and the most notable fall (36.1%) - in section “Crude materials, inedible (except fuels)”².

In **imports from EU** the largest increase (50.6%) was reported in section “Mineral fuels, lubricants and related materials” while a decrease was observed only in section “Animal and vegetable oils, fats and waxes” – (0.2%).

¹ Value changes at current prices.

² The section includes following divisions: raw hides, skins and furskins; oil-seeds and oleaginous fruits; crude rubber; cork and wood; pulp and waste paper; textile fibres and their wastes; crude fertilizers and crude minerals; metalliferous ores and metal scrap; crude animal and vegetable materials, n.e.s.

Annex

Exports, imports and trade balance for the period January - August 2011 and 2012¹ by months

Table 1
(Million Levs)

Months/Periods	Exports - FOB			Imports - CIF			Imports - FOB ²			Trade balance - FOB/CIF			Trade balance - FOB/FOB ²		
	Total	EU	Non EU	Total	EU	Non EU	Total	EU	Non EU	Total	EU	Non EU	Total	EU	Non EU
I.2011	3054.5	1789.0	1265.5	3353.1	1987.0	1366.1	3211.1	1907.9	1303.2	-298.6	-198.0	-100.6	-156.6	-118.9	-37.7
II.2011	2935.1	1840.9	1094.2	3168.3	1898.6	1269.7	3041.6	1827.9	1213.7	-233.2	-57.7	-175.5	-106.5	13.0	-119.5
III.2011	3320.2	2027.1	1293.1	3772.8	2284.2	1488.6	3613.6	2193.5	1420.1	-452.6	-257.1	-195.5	-293.4	-166.4	-127.0
I - III.2011	9309.8	5657.0	3652.8	10294.2	6169.8	4124.4	9866.3	5929.3	3937.0	-984.4	-512.8	-471.6	-556.5	-272.3	-284.2
IV.2011	3144.3	1850.8	1293.5	3815.2	2226.2	1589.0	3652.4	2137.7	1514.7	-670.9	-375.4	-295.5	-508.1	-286.9	-221.2
V.2011	3283.6	2041.0	1242.6	3817.6	2238.1	1579.5	3659.2	2153.0	1506.2	-534.0	-197.1	-336.9	-375.6	-112.0	-263.6
VI.2011	3256.6	2067.1	1189.5	3749.3	2035.1	1714.2	3591.2	1958.4	1632.8	-492.7	32.0	-524.7	-334.6	108.7	-443.3
IV - VI.2011	9684.5	5958.9	3725.6	11382.1	6499.4	4882.7	10902.8	6249.1	4653.7	-1697.6	-540.5	-1157.1	-1218.3	-290.2	-928.1
I - VI.2011	18994.3	11615.9	7378.4	21676.3	12669.2	9007.1	20769.1	12178.4	8590.7	-2682.0	-1053.3	-1628.7	-1774.8	-562.5	-1212.3
VII.2011	3618.8	2235.9	1382.9	4067.4	2551.8	1515.6	3893.6	2449.2	1444.4	-448.6	-315.9	-132.7	-274.8	-213.3	-61.5
VIII.2011	3435.1	2216.1	1219.0	3500.4	2023.3	1477.1	3357.6	1945.3	1412.3	-65.3	192.8	-258.1	77.5	270.8	-193.3
I - VIII.2011	26048.2	16067.9	9980.3	29244.1	17244.3	11999.8	28020.3	16572.9	11447.4	-3195.9	-1176.4	-2019.5	-1972.1	-505.0	-1467.1
I.2012	2813.5	1725.2	1088.3	3500.8	2128.5	1372.3	3355.9	2042.7	1313.2	-687.3	-403.3	-284.0	-542.4	-317.5	-224.9
II.2012	2863.2	1650.6	1212.6	3605.8	2123.7	1482.1	3457.0	2042.0	1415.0	-742.6	-473.1	-269.5	-593.8	-391.4	-202.4
III.2012	3369.4	2046.9	1322.5	4244.7	2570.4	1674.3	4070.5	2469.7	1600.8	-875.3	-523.5	-351.8	-701.1	-422.8	-278.3
I - III.2012	9046.1	5422.7	3623.4	11351.3	6822.6	4528.7	10883.4	6554.4	4329.0	-2305.2	-1399.9	-905.3	-1837.3	-1131.7	-705.6
IV.2012	3187.2	1957.1	1230.1	4267.1	2321.8	1945.3	4086.5	2233.3	1853.2	-1079.9	-364.7	-715.2	-899.3	-276.2	-623.1
V.2012	3653.2	2142.5	1510.7	4661.7	2683.1	1978.6	4464.2	2576.4	1887.8	-1008.5	-540.6	-467.9	-811.0	-433.9	-377.1
VI.2012	3456.0	2002.6	1453.4	4373.5	2635.5	1738.0	4188.7	2527.7	1661.0	-917.5	-632.9	-284.6	-732.7	-525.1	-207.6
IV - VI.2012	10296.4	6102.2	4194.2	13302.3	7640.4	5661.9	12739.4	7337.4	5402.0	-3005.9	-1538.2	-1467.7	-2443.0	-1235.2	-1207.8
I - VI.2012	19342.5	11524.9	7817.6	24653.6	14463.0	10190.6	23622.8	13891.8	9731.0	-5311.1	-2938.1	-2373.0	-4280.3	-2366.9	-1913.4
VII.2012	3647.5	2238.1	1409.4	4323.8	2636.1	1687.7	4143.7	2530.3	1613.4	-676.3	-398.0	-278.3	-496.2	-292.2	-204.0
VIII.2012	3653.7	1965.1	1688.6	4093.3	2217.2	1876.1	3917.6	2132.6	1785.0	-439.6	-252.1	-187.5	-263.9	-167.5	-96.4
I - VIII.2012	26643.7	15728.1	10915.6	33070.7	19316.3	13754.4	31684.1	18554.7	13129.4	-6427.0	-3588.2	-2838.8	-5040.4	-2826.6	-2213.8

¹ Data are preliminary as of 09.11.2012.

² By data of BNB for the transport costs.



Table 2

Value changes of exports and imports for the period January - August 2012¹ compared to the same period of the previous year

(Per cent)

Months/Periods	Exports - FOB			Imports - CIF			Imports - FOB		
	Total	EU	Non EU	Total	EU	Non EU	Total	EU	Non EU
I	-7.9	-3.6	-14.0	4.4	7.1	0.5	4.5	7.1	0.8
II	-2.4	-10.3	10.8	13.8	11.9	16.7	13.7	11.7	16.6
III	1.5	1.0	2.3	12.5	12.5	12.5	12.6	12.6	12.7
I - III	-2.8	-4.1	-0.8	10.3	10.6	9.8	10.3	10.5	10.0
IV	1.4	5.7	-4.9	11.8	4.3	22.4	11.9	4.5	22.3
V	11.3	5.0	21.6	22.1	19.9	25.3	22.0	19.7	25.3
VI	6.1	-3.1	22.2	16.6	29.5	1.4	16.6	29.1	1.7
IV - VI	6.3	2.4	12.6	16.9	17.6	16.0	16.8	17.4	16.1
I - VI	1.8	-0.8	6.0	13.7	14.2	13.1	13.7	14.1	13.3
VII	0.8	0.1	1.9	6.3	3.3	11.4	6.4	3.3	11.7
VIII	6.4	-11.3	38.5	16.9	9.6	27.0	16.7	9.6	26.4
I - VIII	2.3	-2.1	9.4	13.1	12.0	14.6	13.1	12.0	14.7

¹ Data are preliminary as of 09.11.2012.



Table 3

Exports, imports and trade balance by groups of countries and main trade partners¹ for the period January - August 2011 and 2012²

Countries and groups of countries	Exports - FOB			Imports - CIF			Trade balance - FOB/CIF	
	2011	2012	Change compared to the same period of the previous year - %	2011	2012	Change compared to the same period of the previous year - %	2011	2012
	Million Levs			Million Levs			Million Levs	
Total	26048.2	26643.7	2.3	29244.1	33070.7	13.1	-3195.9	-6427.0
EU	16067.9	15728.1	-2.1	17244.3	19316.3	12.0	-1176.4	-3588.2
Austria	507.0	495.2	-2.3	937.0	1002.3	7.0	-430.0	-507.1
Belgium	1440.3	983.7	-31.7	515.1	563.1	9.3	925.2	420.6
Cyprus	74.5	113.3	52.1	67.9	128.6	89.4	6.6	-15.3
Czech Republic	273.6	312.1	14.1	469.0	602.1	28.4	-195.4	-290.0
Denmark	180.7	119.7	-33.8	113.3	118.9	4.9	67.4	0.8
Estonia	15.8	14.9	-5.7	6.1	7.5	23.0	9.7	7.4
Finland	40.1	43.2	7.7	76.6	83.0	8.4	-36.5	-39.8
France	1086.6	1099.0	1.1	902.8	949.9	5.2	183.8	149.1
Germany	3077.5	2724.4	-11.5	3210.8	3715.0	15.7	-133.3	-990.6
Greece	1737.4	1915.5	10.3	1726.3	1881.4	9.0	11.1	34.1
Hungary	353.0	313.0	-11.3	891.6	950.4	6.6	-538.6	-637.4
Ireland	18.0	27.2	51.1	99.7	110.1	10.4	-81.7	-82.9
Italy	2221.6	2293.3	3.2	2031.0	2094.5	3.1	190.6	198.8
Latvia	26.1	34.1	30.7	20.2	24.2	19.8	5.9	9.9
Lithuania	32.8	43.0	31.1	46.1	56.9	23.4	-13.3	-13.9
Luxembourg	29.4	4.4	-85.0	18.9	25.1	32.8	10.5	-20.7
Malta	56.8	11.1	-80.5	19.8	85.1	329.8	37.0	-74.0
Netherlands	441.2	452.9	2.7	718.7	1042.0	45.0	-277.5	-589.1
Poland	487.1	466.0	-4.3	529.7	661.4	24.9	-42.6	-195.4
Portugal	93.8	195.0	107.9	63.5	117.6	85.2	30.3	77.4
Romania	2344.9	2169.0	-7.5	2046.3	2181.1	6.6	298.6	-12.1
Slovakia	141.3	157.0	11.1	351.4	416.0	18.4	-210.1	-259.0
Slovenia	138.7	273.9	97.5	227.1	201.8	-11.1	-88.4	72.1
Spain	585.2	781.0	33.5	1518.0	1632.0	7.5	-932.8	-851.0
Sweden	140.8	119.6	-15.1	178.2	174.8	-1.9	-37.4	-55.2
United Kingdom	481.7	523.5	8.7	435.5	463.4	6.4	46.2	60.1
Not specified	42.0	43.1	2.6	23.7	28.1	18.6	18.3	15.0

¹ Partner country:

- In case of exports (or dispatches) is the country (or Member State) of final destination of the goods
- In case of imports (or arrivals) is the country (or Member State) of consignment of the goods.

² Data are preliminary as of 09.11.2012.



Table 3

Exports, imports and trade balance by groups of countries and main trade partners¹
for the period January - August 2011² and 2012²

(Continued)

Countries and groups of countries	Exports - FOB			Imports - CIF			Trade balance - FOB/CIF	
	2011	2012	Change compared to the same period of the previous year - %	2011	2012	Change compared to the same period of the previous year - %	2011	2012
	Million Levs			Million Levs			Million Levs	
Non EU countries	9980.3	10915.6	9.4	11999.8	13754.4	14.6	-2019.5	-2838.8
CIS	1503.8	1595.7	6.1	6764.5	7961.0	17.7	-5260.7	-6365.3
of which:								
Georgia	264.6	323.0	22.1	257.1	214.5	-16.6	7.5	108.5
Kazakhstan	25.9	42.9	65.6	111.3	50.3	-54.8	-85.4	-7.4
Russian Fed.	674.9	712.3	5.5	5122.9	6791.8	32.6	-4448.0	-6079.5
Ukraine	366.7	290.4	-20.8	1183.5	807.0	-31.8	-816.8	-516.6
OECD³	3213.9	3600.4	12.0	2271.9	2369.5	4.3	942.0	1230.9
of which:								
Canada	81.1	143.8	77.3	53.2	60.8	14.3	27.9	83.0
Japan	30.8	31.9	3.6	88.3	87.9	-0.5	-57.5	-56.0
Korea, Rep. of	127.1	161.2	26.8	142.8	132.6	-7.1	-15.7	28.6
Turkey	2378.1	2501.7	5.2	1466.1	1525.9	4.1	912.0	975.8
USA	340.1	450.2	32.4	254.0	238.8	-6.0	86.1	211.4
EFTA	203.1	246.9	21.6	252.0	275.2	9.2	-48.9	-28.3
of which:								
Norway	35.8	42.2	17.9	14.4	9.1	-36.8	21.4	33.1
Switzerland	159.9	197.4	23.5	235.2	265.6	12.9	-75.3	-68.2

¹ Partner country:

- In case of exports (or dispatches) is the country (or Member State) of final destination of the goods

- In case of imports (or arrivals) is the country (or Member State) of consignment of the goods.

² Data are preliminary as of 09.11.2012.

³ Excluding EU countries.



Table 3

**Exports, imports and trade balance by groups of countries and main trade partners¹
for the period January - August 2011² and 2012²**

(Continued and end)

Countries and groups of countries	Exports - FOB			Imports - CIF			Trade balance - FOB/CIF	
	2011	2012	Change compared to the same period of the previous year - %	2011	2012	Change compared to the same period of the previous year - %	2011	2012
	Million Levs			Million Levs			Million Levs	
Countries not included in the upper groups								
Albania	61.2	64.0	4.6	22.5	25.3	12.4	38.7	38.7
Bosnia and Herzegovina	53.5	45.7	-14.6	8.9	21.7	143.8	44.6	24.0
Brazil	45.4	62.6	37.9	99.9	196.8	97.0	-54.5	-134.2
China	367.3	806.2	119.5	807.4	1074.2	33.0	-440.1	-268.0
Croatia	137.6	81.2	-41.0	37.5	38.0	1.3	100.1	43.2
Egypt	194.8	159.0	-18.4	119.7	68.2	-43.0	75.1	90.8
FYR of Macedonia	607.5	519.7	-14.5	332.7	330.3	-0.7	274.8	189.4
India	108.0	44.9	-58.4	81.4	96.2	18.2	26.6	-51.3
Indonesia	15.7	19.4	23.6	26.8	31.2	16.4	-11.1	-11.8
Iran	68.7	23.2	-66.2	4.2	7.3	73.8	64.5	15.9
Israel	56.9	135.3	137.8	218.2	73.3	-66.4	-161.3	62.0
Peru	3.1	3.3	6.5	43.4	155.7	258.8	-40.3	-152.4
Serbia	654.0	599.3	-8.4	321.3	316.7	-1.4	332.7	282.6
Singapore	69.6	85.9	23.4	18.0	19.1	6.1	51.6	66.8
South Africa	122.3	85.9	-29.8	25.2	46.8	85.7	97.1	39.1
Syria	13.6	30.7	125.7	50.0	45.8	-8.4	-36.4	-15.1
Taiwan	30.9	34.5	11.7	74.5	89.8	20.5	-43.6	-55.3
United Arab Emirates	41.9	176.5	321.2	61.1	92.9	52.0	-19.2	83.6
Viet Nam	14.6	15.7	7.5	22.0	41.2	87.3	-7.4	-25.5

¹ Partner country:

- In case of exports (or dispatches) is the country (or Member State) of final destination of the goods
- In case of imports (or arrivals) is the country (or Member State) of consignment of the goods.

² Data are preliminary as of 09.11.2012.



Table 4

Exports, imports and trade balance by sections of SITC, rev.4
for the period January - August 2011 and 2012¹

Sections by SITC	Exports - FOB			Imports - CIF			Trade balance - FOB/CIF	
	2011	2012	Change compared to the same period of the previous year - %	2011	2012	Change compared to the same period of the previous year - %	2011	2012
	Million Levs			Million Levs			Million Levs	
Total	26048.2	26643.7	2.3	29244.1	33070.7	13.1	-3195.9	-6427.0
of which EU	16067.9	15728.1	-2.1	17244.3	19316.3	12.0	-1176.4	-3588.2
Food and live animals	2283.1	2727.7	19.5	2143.3	2287.6	6.7	139.8	440.1
of which EU	1768.7	2098.9	18.7	1756.4	1980.6	12.8	12.3	118.3
Beverages and tobacco	477.5	566.5	18.6	339.1	430.1	26.8	138.4	136.4
of which EU	201.4	197.1	-2.1	250.0	316.8	26.7	-48.6	-119.7
Crude materials, inedible (except fuel)	2615.8	2258.3	-13.7	2953.8	3181.5	7.7	-338.0	-923.2
of which EU	1555.0	993.1	-36.1	1881.2	1948.7	3.6	-326.2	-955.6
Mineral fuel, lubricants and related materials	3646.3	4215.7	15.6	6691.5	8053.7	20.4	-3045.2	-3838.0
of which EU	746.9	1023.9	37.1	781.4	1176.5	50.6	-34.5	-152.6
Animals and vegetable oils, fats and waxes	166.2	195.2	17.4	138.1	150.1	8.7	28.1	45.1
of which EU	124.6	148.0	18.8	108.1	107.9	-0.2	16.5	40.1
Chemical and related products n.e.c.	2076.8	2230.1	7.4	3458.0	3790.2	9.6	-1381.2	-1560.1
of which EU	970.3	1034.3	6.6	2696.1	2905.8	7.8	-1725.8	-1871.5
Manufactured goods classified chiefly by material	6738.4	6229.2	-7.6	5017.4	5068.0	1.0	1721.0	1161.2
of which EU	4439.9	3859.5	-13.1	3134.2	3182.1	1.5	1305.7	677.4
Machinery and transport equipment	4280.5	4383.8	2.4	6536.9	8069.7	23.4	-2256.4	-3685.9
of which EU	3123.1	3195.3	2.3	5127.4	6151.7	20.0	-2004.3	-2956.4
Miscellaneous manufactured articles	3736.3	3781.3	1.2	1890.1	1963.3	3.9	1846.2	1818.0
of which EU	3124.6	3161.4	1.2	1450.3	1479.9	2.0	1674.3	1681.5
Commodities and transactions n.e.c.	27.3	55.9	104.8	75.9	76.5	0.8	-48.6	-20.6
of which EU	13.4	16.6	23.9	59.2	66.3	12.0	-45.8	-49.7

¹ Data are preliminary as of 09.11.2012.