

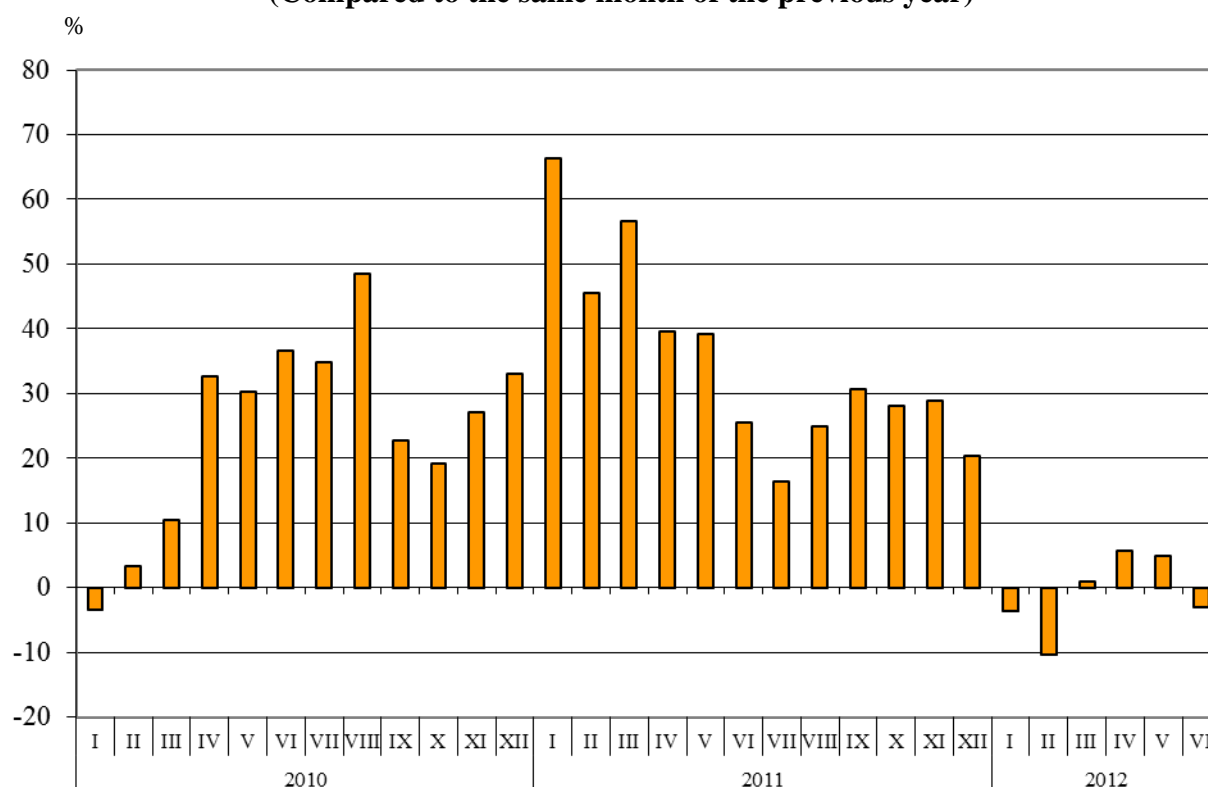


BULGARIAN TRADE WITH EU FOR THE PERIOD JANUARY - JUNE 2012 (PRELIMINARY DATA)

In the period **January - June 2012** the Bulgarian **exports to the EU** decreased by 0.8% compared to the corresponding period of the previous year and amounted to 11.5 Billion Levs (Annex, Table 1 and 2). The main trade partners of Bulgaria were Germany, Italy, Romania, Greece, France and Belgium that formed 71.6% of the exports to the EU Member States (Annex, Table 3). The most significant growths were observed in the exports to Portugal and Slovenia while the most notable falls were registered in the exports to Luxembourg and Malta.

In June 2012 the exports to the EU decreased by 3.1% compared to the corresponding month of the previous year and amounted to 2.0 Billion Levs.

**Figure 1. Nominal value¹ change of exports to EU for the period 2010 – 2012
(Compared to the same month of the previous year)**



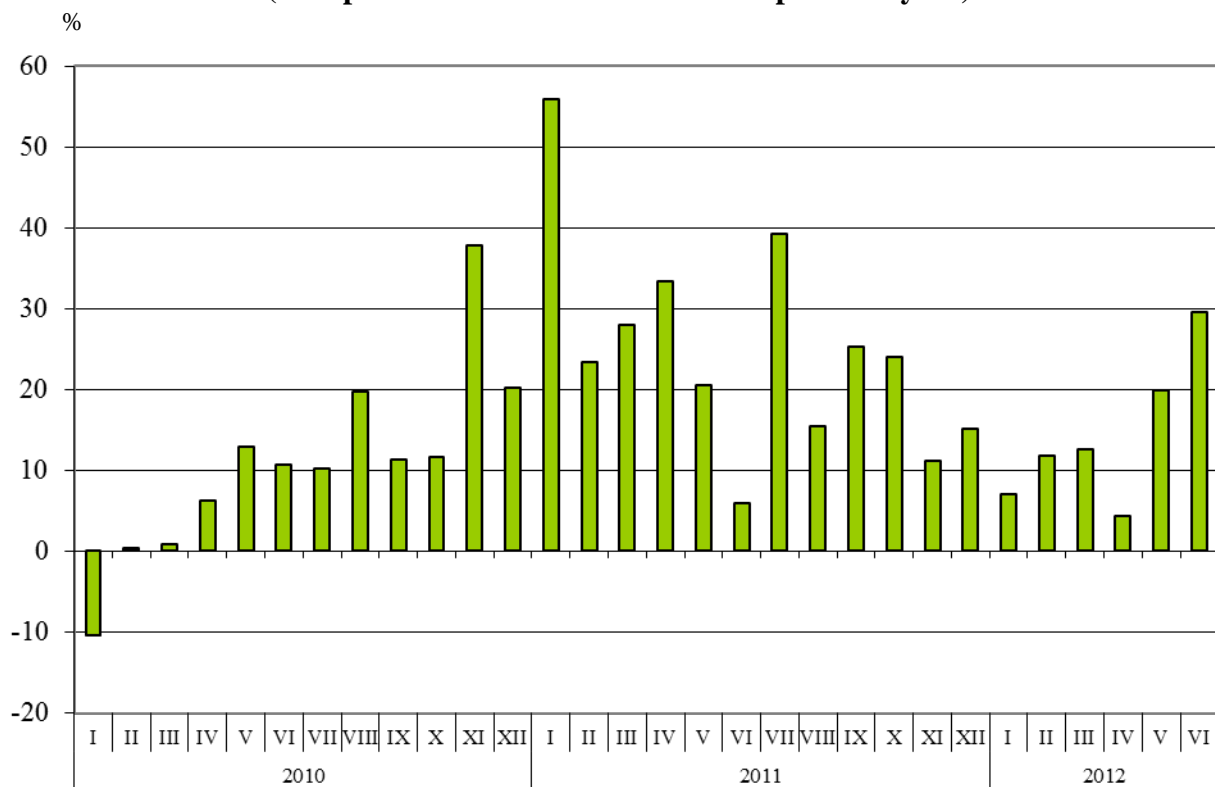
Bulgarian **imports from the EU** in the period January - June 2012 increased by 14.2% compared to the corresponding period of the previous year and added up to 14.5 Billion Levs at CIF prices (Annex, Tables 1 and 2). The most significant growths were reported on the imports from Cyprus and Portugal (Annex, Table 3) while the largest decrease - in the imports from Malta.

¹ Value changes at current prices.



In June 2012 the Bulgarian imports from the EU Member States grew by 29.5% compared to the corresponding month of the previous year and added up to 2.6 Billion Levs at CIF prices.

**Figure 2. Nominal value¹ change of imports from EU for the period 2010 – 2012
(Compared to the same month of the previous year)**



The **foreign trade balance** of Bulgaria (export FOB - import CIF) **with EU** in the period January – June 2012 was negative and added up to 2 938.1 Million Levs (Annex, Table 1). At FOB/FOB prices (after elimination of transport and insurance costs on imports) the trade balance was also negative and amounted to 2 366.9 Million Levs.

In the **first six months of 2012** compared to the corresponding period of the previous year the largest growth **in the exports** of Bulgaria **to EU** distributed according to the Standard International Trade Classification (Annex, Table 4) was recorded in the section “Animal and vegetable oils, fats and waxes”² and the most notable fall - in section “Crude materials, inedible (except fuels)”³.

In **imports from EU** the largest growth was reported in section “Mineral fuels, lubricants and related materials” while a fall was observed only in section “Animal and vegetable oils, fats and waxes”.

¹ Value changes at current prices.

² The section includes the following divisions: animal oils and fats; fixed vegetable fats and oils, crude, refined or fractionated; animal or vegetable fats and oils processed; waxes of animal or vegetable origin; inedible mixtures or preparations of animal or vegetable fats or oils, n.e.s.

³ The section includes following divisions: raw hides, skins and furskins; oil-seeds and oleaginous fruits; crude rubber; cork and wood; pulp and waste paper; textile fibres and their wastes; crude fertilizers and crude minerals; metalliferous ores and metal scrap; crude animal and vegetable materials, n.e.s.

Annex

Exports, imports and trade balance for the period January - June 2011 and 2012¹ by months

Table 1
(Million Levs)

Months/ Periods	Exports - FOB			Imports - CIF			Imports - FOB ²			Trade balance - FOB/CIF			Trade balance - FOB/FOB ²		
	Total	EU	Non EU	Total	EU	Non EU	Total	EU	Non EU	Total	EU	Non EU	Total	EU	Non EU
I.2011	3054.5	1789.0	1265.5	3353.1	1987.0	1366.1	3211.1	1907.9	1303.2	-298.6	-198.0	-100.6	-156.6	-118.9	-37.7
II.2011	2935.1	1840.9	1094.2	3168.3	1898.6	1269.7	3041.6	1827.9	1213.7	-233.2	-57.7	-175.5	-106.5	13.0	-119.5
III.2011	3320.2	2027.1	1293.1	3772.8	2284.2	1488.6	3613.6	2193.5	1420.1	-452.6	-257.1	-195.5	-293.4	-166.4	-127.0
I - III.2011	9309.8	5657.0	3652.8	10294.2	6169.8	4124.4	9866.3	5929.3	3937.0	-984.4	-512.8	-471.6	-556.5	-272.3	-284.2
IV.2011	3144.3	1850.8	1293.5	3815.2	2226.2	1589.0	3652.4	2137.7	1514.7	-670.9	-375.4	-295.5	-508.1	-286.9	-221.2
V.2011	3283.6	2041.0	1242.6	3817.6	2238.1	1579.5	3659.2	2153.0	1506.2	-534.0	-197.1	-336.9	-375.6	-112.0	-263.6
VI.2011	3256.6	2067.1	1189.5	3749.3	2035.1	1714.2	3591.2	1958.4	1632.8	-492.7	32.0	-524.7	-334.6	108.7	-443.3
IV - VI.2011	9684.5	5958.9	3725.6	11382.1	6499.4	4882.7	10902.8	6249.1	4653.7	-1697.6	-540.5	-1157.1	-1218.3	-290.2	-928.1
I - VI.2011	18994.3	11615.9	7378.4	21676.3	12669.2	9007.1	20769.1	12178.4	8590.7	-2682.0	-1053.3	-1628.7	-1774.8	-562.5	-1212.3
I.2012	2813.5	1725.2	1088.3	3500.8	2128.5	1372.3	3355.9	2042.7	1313.2	-687.3	-403.3	-284.0	-542.4	-317.5	-224.9
II.2012	2863.2	1650.6	1212.6	3605.8	2123.7	1482.1	3457.0	2042.0	1415.0	-742.6	-473.1	-269.5	-593.8	-391.4	-202.4
III.2012	3369.4	2046.9	1322.5	4244.7	2570.4	1674.3	4070.5	2469.7	1600.8	-875.3	-523.5	-351.8	-701.1	-422.8	-278.3
I - III.2012	9046.1	5422.7	3623.4	11351.3	6822.6	4528.7	10883.4	6554.4	4329.0	-2305.2	-1399.9	-905.3	-1837.3	-1131.7	-705.6
IV.2012	3187.2	1957.1	1230.1	4267.1	2321.8	1945.3	4086.5	2233.3	1853.2	-1079.9	-364.7	-715.2	-899.3	-276.2	-623.1
V.2012	3653.2	2142.5	1510.7	4661.7	2683.1	1978.6	4464.2	2576.4	1887.8	-1008.5	-540.6	-467.9	-811.0	-433.9	-377.1
VI.2012	3456.0	2002.6	1453.4	4373.5	2635.5	1738.0	4188.7	2527.7	1661.0	-917.5	-632.9	-284.6	-732.7	-525.1	-207.6
IV-VI.2012	10296.4	6102.2	4194.2	13302.3	7640.4	5661.9	12739.4	7337.4	5402.0	-3005.9	-1538.2	-1467.7	-2443.0	-1235.2	-1207.8
I - VI.2012	19342.5	11524.9	7817.6	24653.6	14463.0	10190.6	23622.8	13891.8	9731.0	-5311.1	-2938.1	-2373.0	-4280.3	-2366.9	-1913.4

¹ Data are preliminary as of 10.09.2012.

² By data of BNB for the transport costs.



Table 2

Value changes of exports and imports for the period January - June 2012¹ compared to the same period of the previous year

(Per cent)

Months/Periods	Exports - FOB			Imports - CIF			Imports - FOB		
	Total	EU	Non EU	Total	EU	Non EU	Total	EU	Non EU
I	-7.9	-3.6	-14.0	4.4	7.1	0.5	4.5	7.1	0.8
II	-2.4	-10.3	10.8	13.8	11.9	16.7	13.7	11.7	16.6
III	1.5	1.0	2.3	12.5	12.5	12.5	12.6	12.6	12.7
I - III	-2.8	-4.1	-0.8	10.3	10.6	9.8	10.3	10.5	10.0
IV	1.4	5.7	-4.9	11.8	4.3	22.4	11.9	4.5	22.3
V	11.3	5.0	21.6	22.1	19.9	25.3	22.0	19.7	25.3
VI	6.1	-3.1	22.2	16.6	29.5	1.4	16.6	29.1	1.7
IV - VI	6.3	2.4	12.6	16.9	17.6	16.0	16.8	17.4	16.1
I - VI	1.8	-0.8	6.0	13.7	14.2	13.1	13.7	14.1	13.3

¹ Data are preliminary as of 10.09.2012.



Table 3

Exports, imports and trade balance by groups of countries and main trade partners¹ for the period January - June 2011 and 2012²

Countries and groups of countries	Exports - FOB			Imports - CIF			Trade balance - FOB/CIF	
	2011	2012	Change compared to the same period of the previous year - %	2011	2012	Change compared to the same period of the previous year - %	2011	2012
	Million Levs			Million Levs			Million Levs	
Total	18994.3	19342.5	1.8	21676.3	24653.6	13.7	-2682.0	-5311.1
EU	11615.9	11524.9	-0.8	12669.2	14463.0	14.2	-1053.3	-2938.1
Austria	368.6	363.8	-1.3	691.5	732.1	5.9	-322.9	-368.3
Belgium	1133.6	761.7	-32.8	381.9	412.8	8.1	751.7	348.9
Cyprus	45.9	73.3	59.7	43.3	112.3	159.4	2.6	-39.0
Czech Republic	196.2	227.5	16.0	343.0	445.1	29.8	-146.8	-217.6
Denmark	100.5	86.6	-13.8	80.5	88.7	10.2	20.0	-2.1
Estonia	11.8	10.6	-10.2	3.7	5.5	48.6	8.1	5.1
Finland	27.1	30.4	12.2	54.6	63.4	16.1	-27.5	-33.0
France	752.9	812.6	7.9	695.4	722.3	3.9	57.5	90.3
Germany	2094.8	2068.9	-1.2	2352.6	2830.6	20.3	-257.8	-761.7
Greece	1240.7	1422.3	14.6	1276.9	1403.4	9.9	-36.2	18.9
Hungary	264.8	236.1	-10.8	654.9	686.9	4.9	-390.1	-450.8
Ireland	13.0	14.4	10.8	72.7	79.1	8.8	-59.7	-64.7
Italy	1725.2	1742.7	1.0	1550.5	1608.1	3.7	174.7	134.6
Latvia	20.0	24.5	22.5	18.1	15.7	-13.3	1.9	8.8
Lithuania	25.0	27.4	9.6	30.7	39.0	27.0	-5.7	-11.6
Luxembourg	21.3	3.0	-85.9	13.6	17.5	28.7	7.7	-14.5
Malta	54.0	8.9	-83.5	14.5	4.6	-68.3	39.5	4.3
Netherlands	333.9	351.5	5.3	543.4	787.2	44.9	-209.5	-435.7
Poland	377.7	321.7	-14.8	382.8	467.7	22.2	-5.1	-146.0
Portugal	71.1	156.4	120.0	53.7	89.0	65.7	17.4	67.4
Romania	1667.9	1444.0	-13.4	1515.0	1613.9	6.5	152.9	-169.9
Slovakia	100.5	113.2	12.6	271.2	306.5	13.0	-170.7	-193.3
Slovenia	120.5	249.7	107.2	175.6	152.5	-13.2	-55.1	97.2
Spain	359.3	452.5	25.9	1005.2	1301.8	29.5	-645.9	-849.3
Sweden	107.4	92.7	-13.7	131.9	124.9	-5.3	-24.5	-32.2
United Kingdom	358.7	391.8	9.2	294.3	334.8	13.8	64.4	57.0
Not specified	23.5	36.7	56.2	17.7	17.6	-0.6	5.8	19.1



Table 3

**Exports, imports and trade balance by groups of countries and main trade partners¹
for the period January - June 2011² and 2012²**

(Continued)

Countries and groups of countries	Exports - FOB			Imports - CIF			Trade balance - FOB/CIF	
	2011	2012	Change compared to the same period of the previous year - %	2011	2012	Change compared to the same period of the previous year - %	2011	2012
	Million Levs			Million Levs			Million Levs	
Non EU countries	7378.4	7817.6	6.0	9007.1	10190.6	13.1	-1628.7	-2373.0
CIS	978.0	1068.5	9.3	5224.6	5940.2	13.7	-4246.6	-4871.7
of which:								
Georgia	170.8	219.4	28.5	205.6	168.8	-17.9	-34.8	50.6
Kazakhstan	19.3	26.6	37.8	104.2	33.5	-67.9	-84.9	-6.9
Russian Fed.	501.5	512.0	2.1	3920.6	5058.6	29.0	-3419.1	-4546.6
Ukraine	159.9	148.8	-6.9	933.9	624.0	-33.2	-774.0	-475.2
OECD³	2430.5	2489.7	2.4	1664.5	1749.5	5.1	766.0	740.2
of which:								
Canada	48.2	119.1	147.1	18.5	52.3	182.7	29.7	66.8
Japan	19.2	21.3	10.9	64.7	66.6	2.9	-45.5	-45.3
Korea, Rep. of	83.4	132.1	58.4	111.1	109.1	-1.8	-27.7	23.0
Turkey	1830.4	1718.1	-6.1	1079.0	1114.3	3.3	751.4	603.8
USA	264.7	277.3	4.8	189.0	178.6	-5.5	75.7	98.7
EFTA	144.9	178.5	23.2	190.2	197.1	3.6	-45.3	-18.6
of which:								
Norway	25.2	31.5	25.0	8.3	7.1	-14.5	16.9	24.4
Switzerland	113.5	140.4	23.7	180.1	189.7	5.3	-66.6	-49.3



Table 3

Exports, imports and trade balance by groups of countries and main trade partners¹
for the period January - June 2011² and 2012²

(Continued and end)

Countries and groups of countries	Exports - FOB			Imports - CIF			Trade balance - FOB/CIF	
	2011	2012	Change compared to the same period of the previous year - %	2011	2012	Change compared to the same period of the previous year - %	2011	2012
	Million Levs			Million Levs			Million Levs	
Countries not included in the upper groups								
Albania	43.8	46.5	6.2	17.2	19.4	12.8	26.6	27.1
Bosnia and Herzegovina	38.1	32.9	-13.6	5.1	13.0	154.9	33.0	19.9
Brazil	37.7	59.1	56.8	59.5	131.7	121.3	-21.8	-72.6
China	286.0	544.8	90.5	590.7	843.1	42.7	-304.7	-298.3
Croatia	121.9	63.8	-47.7	27.0	28.0	3.7	94.9	35.8
Egypt	144.5	121.1	-16.2	28.5	48.4	69.8	116.0	72.7
FYR of Macedonia	438.6	394.6	-10.0	252.4	244.7	-3.1	186.2	149.9
India	94.2	29.8	-68.4	59.2	72.2	22.0	35.0	-42.4
Indonesia	10.3	14.5	40.8	20.8	19.7	-5.3	-10.5	-5.2
Iran	65.0	16.7	-74.3	2.8	7.1	153.6	62.2	9.6
Israel	41.0	123.8	202.0	149.8	59.6	-60.2	-108.8	64.2
Peru	2.3	2.3	0.0	34.6	92.2	166.5	-32.3	-89.9
Serbia	478.2	451.2	-5.6	234.5	229.9	-2.0	243.7	221.3
Singapore	68.1	6.6	-90.3	15.3	14.4	-5.9	52.8	-7.8
South Africa	119.3	80.8	-32.3	18.8	36.1	92.0	100.5	44.7
Syria	10.8	26.0	140.7	36.6	30.6	-16.4	-25.8	-4.6
Taiwan	22.7	24.2	6.6	53.1	72.6	36.7	-30.4	-48.4
United Arab Emirates	30.0	166.0	453.3	57.5	76.0	32.2	-27.5	90.0
Viet Nam	11.8	11.0	-6.8	16.5	30.1	82.4	-4.7	-19.1

¹ Partner country:

- In case of exports (or dispatches) is the country (or Member State) of final destination of the goods
- In case of imports (or arrivals) is the country (or Member State) of consignment of the goods.

² Data are preliminary as of 10.09.2012.

³ Excluding EU countries.



Table 4

Exports, imports and trade balance by sections of SITC, rev.4
for the period January - June 2011¹ and 2012¹

Sections by SITC	Exports - FOB			Imports - CIF			Trade balance - FOB/CIF	
	2011	2012	Change compared to the same period of the previous year - %	2011	2012	Change compared to the same period of the previous year - %	2011	2012
	Million Levs			Million Levs			Million Levs	
Total	18994.3	19342.5	1.8	21676.3	24653.6	13.7	-2682.0	-5311.1
of which EU	11615.9	11524.9	-0.8	12669.2	14463.0	14.2	-1053.3	-2938.1
Food and live animals	1479.2	1690.4	14.3	1555.1	1669.0	7.3	-75.9	21.4
of which EU	1127.7	1274.0	13.0	1280.4	1436.4	12.2	-152.7	-162.4
Beverages and tobacco	348.1	424.6	22.0	247.8	307.0	23.9	100.3	117.6
of which EU	143.5	153.2	6.8	181.0	229.4	26.7	-37.5	-76.2
Crude materials, inedible (except fuel)	1829.4	1730.7	-5.4	2116.6	2450.0	15.8	-287.2	-719.3
of which EU	1045.3	737.3	-29.5	1293.3	1557.8	20.5	-248.0	-820.5
Mineral fuel, lubricants and related materials	2614.6	2873.2	9.9	5071.7	5974.9	17.8	-2457.1	-3101.7
of which EU	520.9	693.1	33.1	570.0	823.3	44.4	-49.1	-130.2
Animals and vegetable oils, fats and waxes	101.2	149.3	47.5	102.4	106.1	3.6	-1.2	43.2
of which EU	73.6	110.3	49.9	78.1	76.3	-2.3	-4.5	34.0
Chemical and related products n.e.c.	1548.8	1642.9	6.1	2551.0	2711.7	6.3	-1002.2	-1068.8
of which EU	706.6	738.3	4.5	2004.2	2119.0	5.7	-1297.6	-1380.7
Manufactured goods classified chiefly by material	5065.7	4743.3	-6.4	3747.8	3850.9	2.8	1317.9	892.4
of which EU	3329.3	3054.3	-8.3	2337.4	2420.1	3.5	991.9	634.2
Machinery and transport equipment	3242.2	3233.7	-0.3	4826.3	6075.0	25.9	-1584.1	-2841.3
of which EU	2371.0	2386.8	0.7	3794.3	4657.8	22.8	-1423.3	-2271.0
Miscellaneous manufactured articles	2745.4	2811.9	2.4	1403.8	1450.7	3.3	1341.6	1361.2
of which EU	2287.1	2363.7	3.3	1086.7	1092.9	0.6	1200.4	1270.8
Commodities and transactions n.e.c.	19.7	42.5	115.7	53.8	58.3	8.4	-34.1	-15.8
of which EU	10.9	13.9	27.5	43.8	50.0	14.2	-32.9	-36.1

¹ Data are preliminary as of 10.09.2012.