

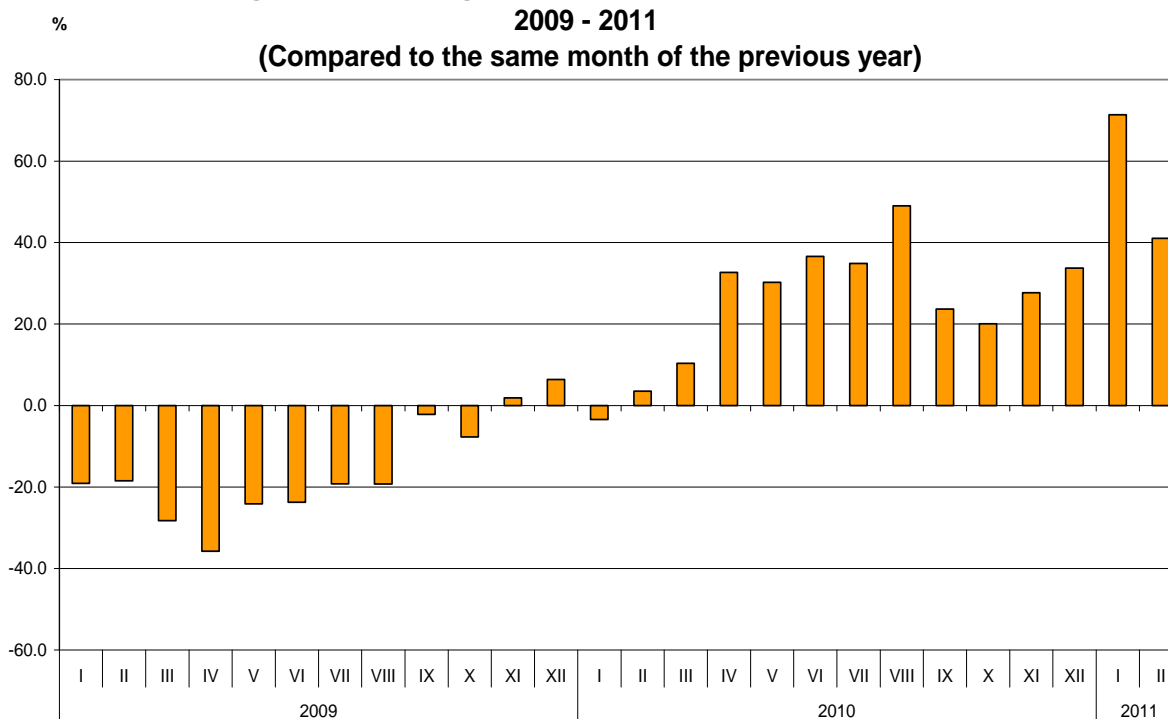


BULGARIAN TRADE WITH EU FOR THE PERIOD JANUARY - FEBRUARY 2011 (PRELIMINARY DATA)

In the period **January - February 2011** the Bulgarian **exports** to the **EU** increased by 55.0% compared to the corresponding period of the previous year and exceeded 3.6 billion leva (Table 1.1 and 1.2). The main trade partners of Bulgaria were Germany, Italy, Romania, Greece and Belgium, that formed 67.9% of the total exports to the EU Member states (Table.2). The most significant growths were observed in the exports to Portugal, Malta, Czech Republic and Estonia. The most notable falls were registered in the exports to Slovakia.

In February 2011 the exports to the EU increased by 41% compared to the corresponding month of the previous year and exceeded 1.7 billion leva.

**Figure 1. Nominal growth of exports to EU for the period
2009 - 2011
(Compared to the same month of the previous year)**

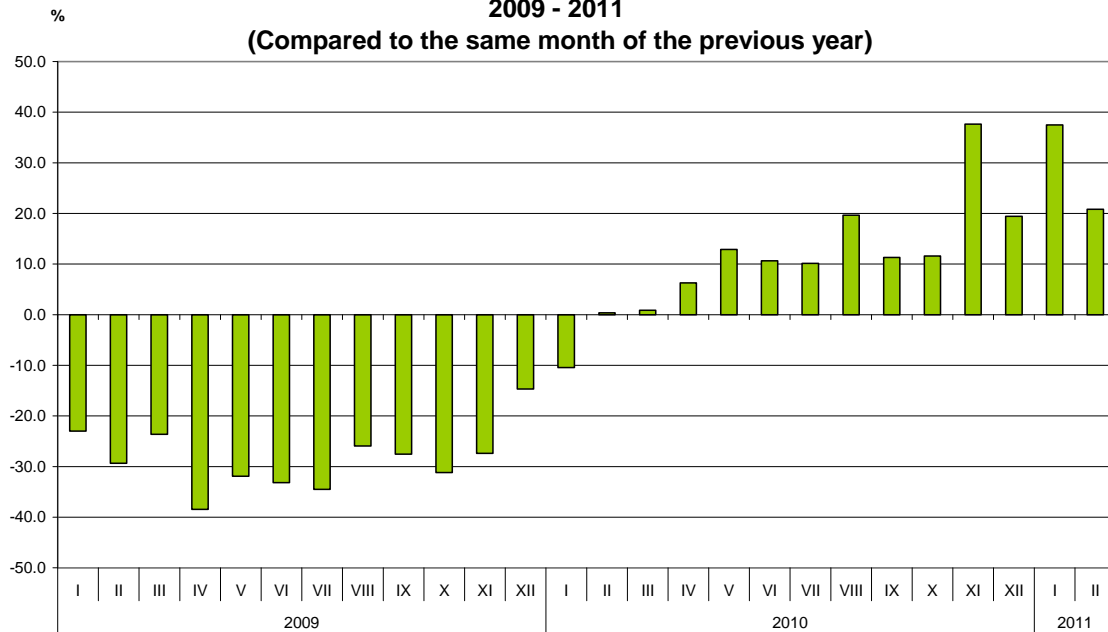


Bulgarian **imports from the EU** in the period January - February 2011 increased by 28.4% compared to the corresponding period of the previous year and exceeded to 3.6 billion leva at CIF prices (Tables 1.1 and 1.2). The most significant growths were reported on the imports from Ireland, Greece and Slovakia (Table 2). The largest decreases were observed in the imports from Spain and Cyprus.

In February 2011 the Bulgarian imports from the EU Member States increased by 20.8% compared to the corresponding month of the previous year and amounted to 1.9 billion leva at CIF prices.



Figure 2. Nominal growth of imports from EU for the period
2009 - 2011
(Compared to the same month of the previous year)



The **foreign trade balance** of Bulgaria (export FOB - import CIF) with EU in the period January – February 2011 **was positive** and amounted to 15.7 million leva (Table 1.1) At FOB/FOB prices (after elimination of transport and insurance costs on imports) the trade balance was also positive and amounted to 192.0 million leva.

The **exports** of Bulgaria to the EU distributed according to the **Standard International Trade Classification**, increased in most of the sections in the first two months of 2011 compared to the corresponding period of the previous year (Table 3). The largest growths were recorded in the sections “Mineral fuels, lubricant and related materials”, “Crude materials, inedible (except fuels)”¹. A fall was observed only in exports of one section – „Beverages and tobacco”.

The largest growths on **imports** from the EU were reported in sections „Animal and vegetable oils, fats and waxes”² and „Beverages and tobacco” and the lowest - in section “Mineral fuels, lubricant and related materials”.

¹ The section includes following divisions: raw hides, skins and furskins; oil-seeds and oleaginous fruits; crude rubber; cork and wood; pulp and waste paper; textile fibres and their wastes; crude fertilizers and crude minerals; metalliferous ores and metal scrap; crude animal and vegetable materials, n.e.s.

² The section includes the following divisions: animal oils and fats; fixed vegetable fats and oils, crude, refined or fractionated; animal or vegetable fats and oils, processed; waxes of animal or vegetable origin; inedible mixtures or preparations of animal or vegetable fats or oils, n.e.s.

ANNEX

Exports, imports and trade balance for the period January - February 2010¹ and 2011¹ by months

Table 1.1

(Million Levs)

Months	Exports - FOB			Imports - CIF			Imports - FOB ²			Trade balance - FOB/CIF			Trade balance - FOB/FOB ²		
	Total	EU	Non EU	Total	EU	Non EU	Total	EU	Non EU	Total	EU	Non EU	Total	EU	Non EU
I.2010	1802.0	1075.2	726.8	2267.4	1275.0	992.4	2133.2	1208.9	924.3	-465.4	-199.8	-265.6	-331.2	-133.7	-197.5
II.2010	1964.3	1264.2	700.1	2302.1	1536.6	765.5	2159.5	1446.8	712.7	-337.8	-272.4	-65.4	-195.2	-182.6	-12.6
I - II.2010	3766.3	2339.4	1426.9	4569.5	2811.6	1757.9	4292.7	2655.7	1637.0	-803.2	-472.2	-331.0	-526.4	-316.3	-210.1
I.2011	3108.4	1842.7	1265.7	3113.0	1753.1	1359.9	2922.3	1665.7	1256.6	-4.6	89.6	-94.2	186.1	177.0	9.1
II.2011	2879.1	1782.8	1096.3	3125.8	1856.7	1269.1	2940.0	1767.8	1172.2	-246.7	-73.9	-172.8	-60.9	15.0	-75.9
I - II.2011	5987.5	3625.5	2362.0	6238.8	3609.8	2629.0	5862.3	3433.5	2428.8	-251.3	15.7	-267.0	125.2	192.0	-66.8

¹ Data are preliminary as of 09.05.2011.

² By data of BNB for the transport costs.

Table 1.2

Growth of exports and imports for the period January - February 2011¹ compared to the same month of the previous year

(Per cent)

Months	Exports - FOB			Imports - CIF			Imports - FOB		
	Total	EU	Non EU	Total	EU	Non EU	Total	EU	Non EU
I	72.5	71.4	74.1	37.3	37.5	37.0	37.0	37.8	36.0
II	46.6	41.0	56.6	35.8	20.8	65.8	36.1	22.2	64.5
I-II	59.0	55.0	65.5	36.5	28.4	49.6	36.6	29.3	48.4

¹ Data are preliminary as of 09.05.2011.



Table2

Exports, imports and trade balance by groups of countries and main trade partners¹
for the period January - February 2010² and 2011²

Countries and groups of countries	Exports - FOB			Imports - CIF			Trade balance - FOB/CIF	
	2010	2011	Growth - %	2010	2011	Growth - %	2010	2011
	Million Levs			Million Levs			Million Levs	
Total	3766.3	5987.5	59.0	4569.5	6238.8	36.5	-803.2	-251.3
EU	2339.4	3625.5	55.0	2811.6	3609.8	28.4	-472.2	15.7
Austria	75.8	115.2	52.0	188.4	227.7	20.9	-112.6	-112.5
Belgium	154.7	268.7	73.7	85.9	102.3	19.1	68.8	166.4
Cyprus	10.5	22.5	114.3	8.5	5.3	-37.6	2.0	17.2
Czech Republic	29.1	66.9	129.9	116.8	105.3	-9.8	-87.7	-38.4
Denmark	16.2	30.6	88.9	33.0	26.6	-19.4	-16.8	4.0
Estonia	1.7	3.9	129.4	1.0	1.0	0.0	0.7	2.9
Finland	5.9	9.5	61.0	21.6	21.7	0.5	-15.7	-12.2
France	169.3	235.7	39.2	169.5	216.8	27.9	-0.2	18.9
Germany	403.0	780.3	93.6	534.4	691.1	29.3	-131.4	89.2
Greece	294.0	412.8	40.4	230.9	390.0	68.9	63.1	22.8
Hungary	49.9	85.1	70.5	173.9	204.0	17.3	-124.0	-118.9
Ireland	2.9	3.7	27.6	11.0	21.9	99.1	-8.1	-18.2
Italy	404.7	529.2	30.8	304.0	413.2	35.9	100.7	116.0
Latvia	4.0	4.0	0.0	1.4	2.1	50.0	2.6	1.9
Lithuania	4.3	5.8	34.9	7.2	8.1	12.5	-2.9	-2.3
Luxembourg	4.9	6.4	30.6	3.8	3.9	2.6	1.1	2.5
Malta	1.2	3.1	158.3	2.2	2.8	27.3	-1.0	0.3
Netherlands	96.8	121.1	25.1	142.3	167.7	17.8	-45.5	-46.6
Poland	83.2	115.6	38.9	90.6	117.1	29.2	-7.4	-1.5
Portugal	11.2	38.3	242.0	18.8	18.4	-2.1	-7.6	19.9
Romania	253.6	470.6	85.6	312.0	488.3	56.5	-58.4	-17.7
Slovakia	40.7	28.6	-29.7	63.7	106.9	67.8	-23.0	-78.3
Slovenia	15.8	17.7	12.0	37.2	47.0	26.3	-21.4	-29.3
Spain	107.3	110.8	3.3	165.1	92.6	-43.9	-57.8	18.2
Sweden	19.2	29.7	54.7	21.9	35.0	59.8	-2.7	-5.3
United Kingdom	77.4	109.0	40.8	62.7	90.8	44.8	14.7	18.2
Not specified	2.1	0.7	-66.7	3.8	2.2	-42.1	-1.7	-1.5
Non EU countries	1426.9	2362.0	65.5	1757.9	2629.0	49.6	-331.0	-267.0
CIS	159.3	272.1	70.8	849.8	1575.9	85.4	-690.5	-1303.8
of which:								
Georgia	24.1	49.7	106.2	39.4	63.3	60.7	-15.3	-13.6
Kazakhstan	3.2	5.4	68.8	0.9	4.1	355.6	2.3	1.3
Russian Fed.	84.9	142.7	68.1	670.4	1132.2	68.9	-585.5	-989.5
Ukraine	22.5	40.5	80.0	127.3	356.9	180.4	-104.8	-316.4
OECD³	422.4	822.1	94.6	411.1	459.8	11.8	11.3	362.3
of which:								
Canada	6.1	8.6	41.0	37.5	4.1	-89.1	-31.4	4.5
Japan	4.6	4.2	-8.7	22.1	20.9	-5.4	-17.5	-16.7
Korea, Rep. of	12.1	20.8	71.9	11.3	23.6	108.8	0.8	-2.8
Turkey	306.4	643.7	110.1	252.1	284.5	12.9	54.3	359.2
USA	49.1	80.1	63.1	33.4	59.0	76.6	15.7	21.1



www.nsi.bg

EFTA	33.3	51.4	54.4	49.1	65.3	33.0	-15.8	-13.9
of which:								
Norway	7.0	12.0	71.4	2.2	2.2	0.0	4.8	9.8
Switzerland	24.6	37.1	50.8	45.6	62.5	37.1	-21.0	-25.4
Countries not included in the upper groups:								
Albania	15.2	16.1	5.9	1.8	6.9	283.3	13.4	9.2
Bosnia and Herzegovina	10.1	10.9	7.9	1.6	1.7	6.3	8.5	9.2
Brazil	3.4	6.7	97.1	11.4	42.2	270.2	-8.0	-35.5
China	58.9	109.7	86.2	121.0	178.2	47.3	-62.1	-68.5
Croatia	16.6	38.2	130.1	6.6	6.3	-4.5	10.0	31.9
Egypt	55.6	37.8	-32.0	4.5	15.5	244.4	51.1	22.3
India	6.6	37.1	462.1	10.6	16.8	58.5	-4.0	20.3
Indonesia	4.4	5.2	18.2	4.1	4.9	19.5	0.3	0.3
Iran	24.2	4.2	-82.6	1.0	1.6	60.0	23.2	2.6
Israel	9.5	16.9	77.9	19.8	26.4	33.3	-10.3	-9.5
Peru	5.8	0.7	-87.9	63.6	12.1	-81.0	-57.8	-11.4
Serbia	133.9	142.3	6.3	47.5	61.6	29.7	86.4	80.7
Singapore	41.7	63.0	51.1	1.9	6.8	257.9	39.8	56.2
South Africa	2.2	113.4	5054.5	0.8	5.7	612.5	1.4	107.7
Syria	22.2	3.9	-82.4	14.2	8.6	-39.4	8.0	-4.7
Taiwan	4.8	6.5	35.4	13.7	17.2	25.5	-8.9	-10.7
The former Yugoslav Rep. of Macedonia	67.7	135.0	99.4	66.7	75.0	12.4	1.0	60.0
United Arab Emirates	31.1	6.7	-78.5	4.3	23.8	453.5	26.8	-17.1
Viet Nam	2.5	3.0	20.0	7.2	6.8	-5.6	-4.7	-3.8

¹ **Partner country:**

- In case of exports (or dispatches) is the country (or Member State) of final destination of the goods.
- In case of imports (or arrivals) is the country (or Member State) of consignment of the goods.

² **Data are preliminary as of 09.05.2011.**

³ **Excluding EU courtiers.**



Table 3

Exports, imports and trade balance by sections of SITC, rev.4
for the period January - February 2010¹ and 2011¹

Sections by SITC	Exports - FOB			Imports - CIF			Trade balance - FOB/CIF	
	2010	2011	Growth - %	2010	2011	Growth - %	2010	2011
	Million Levs			Million Levs			Million Levs	
Total	3766.3	5987.5	59.0	4569.5	6238.8	36.5	-803.2	-251.3
of which EU	2339.4	3625.5	55.0	2811.6	3609.8	28.4	-472.2	15.7
Food and live animals	343.9	521.2	51.6	381.7	509.6	33.5	-37.8	11.6
of which EU	263.9	404.8	53.4	302.2	406.4	34.5	-38.3	-1.6
Beverages and tobacco	108.7	114.6	5.4	30.5	57.5	88.5	78.2	57.1
of which EU	55.3	38.9	-29.7	17.6	34.6	96.6	37.7	4.3
Crude materials, inedible (except fuel)	270.5	583.7	115.8	386.2	432.9	12.1	-115.7	150.8
of which EU	149.2	350.0	134.6	112.3	201.4	79.3	36.9	148.6
Mineral fuel, lubricants and related materials	347.8	827.1	137.8	948.9	1490.1	57.0	-601.1	-663.0
of which EU	54.6	149.1	173.1	215.3	191.3	-11.1	-160.7	-42.2
Animals and vegetable oils, fats and waxes	17.8	29.2	64.0	19.0	36.5	92.1	-1.2	-7.3
of which EU	13.2	20.8	57.6	13.5	28.5	111.1	-0.3	-7.7
Chemical and related products n.e.c.	312.1	463.4	48.5	559.6	773.0	38.1	-247.5	-309.6
of which EU	122.6	216.3	76.4	456.9	603.8	32.2	-334.3	-387.5
Manufactured goods classified chiefly by material	868.6	1584.7	82.4	744.3	1100.1	47.8	124.3	484.6
of which EU	523.6	993.5	89.7	487.6	682.6	40.0	36.0	310.9
Machinery and transport equipment	694.9	951.5	36.9	1134.8	1415.3	24.7	-439.9	-463.8
of which EU	538.0	697.8	29.7	920.2	1136.3	23.5	-382.2	-438.5
Miscellaneous manufactured articles	795.9	905.8	13.8	352.5	407.4	15.6	443.4	498.4
of which EU	618.0	751.0	21.5	275.3	312.2	13.4	342.7	438.8
Commodities and transactions n.e.c.	6.1	6.3	3.3	12.0	16.4	36.7	-5.9	-10.1
of which EU	1.0	3.3	230.0	10.7	12.7	18.7	-9.7	-9.4

¹ Data are preliminary as of 09.05.2011.