

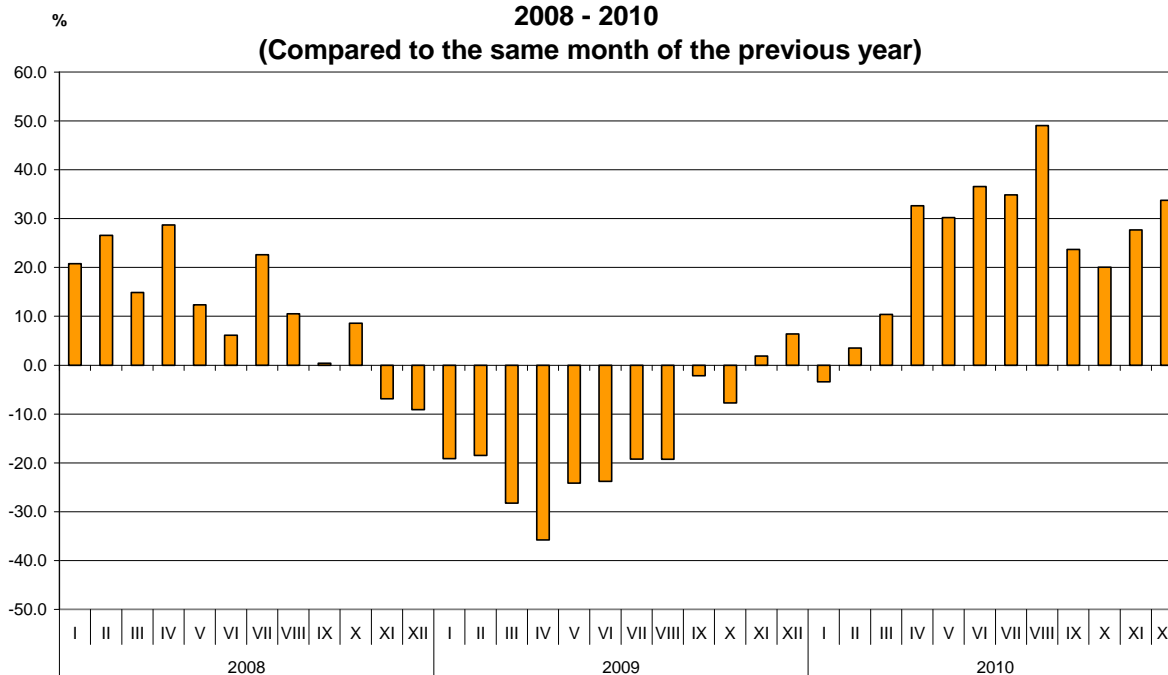


BULGARIAN TRADE WITH EU IN 2010 (PRELIMINARY DATA)

In 2010 the Bulgarian **exports** to the **EU** increased by 25% compared to the previous year and amounted to 18.6 billion leva (Table 1.1 and 1.2). The main trade partners of Bulgaria were Germany, Italy, Romania and Greece that formed 61.6% of the total exports to the EU Member states (Table.2). The exports to Romania increased by 42.7% and those to Italy by 38.2%. The most significant growths were observed in the exports to Estonia and Slovenia. The exports to Denmark and Luxembourg reported growths by 63.0% and 62.6% respectively. The most notable falls were registered in the exports to Cyprus and Belgium.

In December 2010 the exports to the EU increased by 33.7% compared to the corresponding month of the previous year and reached to 1.5 billion leva.

**Figure 1. Nominal growth of exports to EU for the period
2008 - 2010
(Compared to the same month of the previous year)**

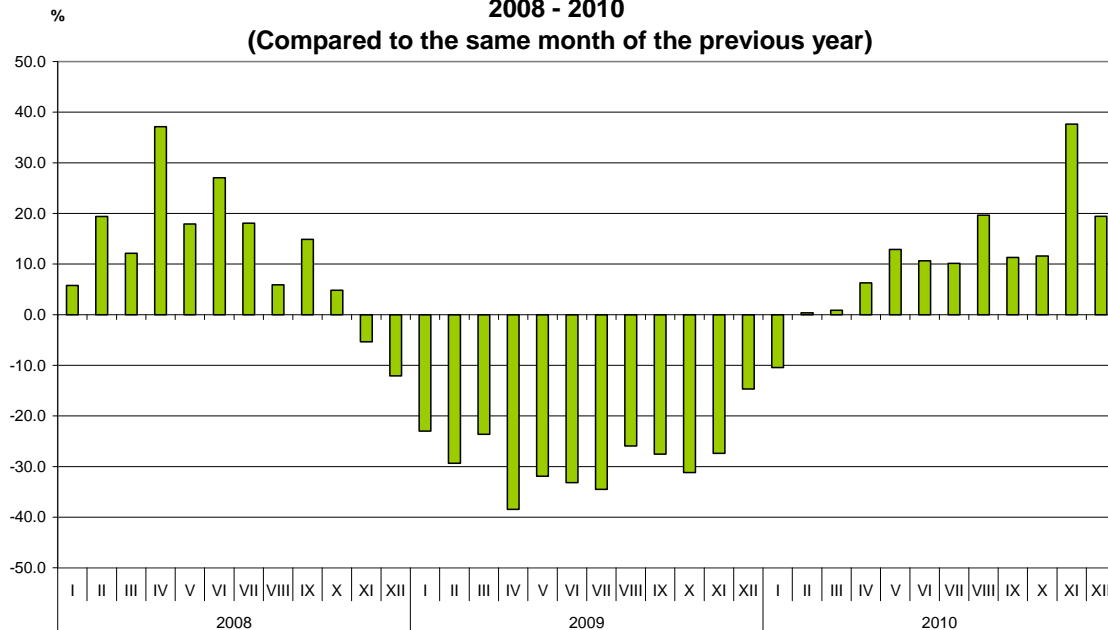


Bulgarian **imports from the EU** in 2010 increased by 11.2% compared to the previous year and amounted to 22.0 billion leva at CIF prices (Tables 1.1 and 1.2). The most significant growths were reported on the imports from Malta (by 259.6%) and Portugal (by 91.1%) (Table 2). The largest decreases were observed in the imports from Estonia, Czech Republic and Cyprus.



www.nsi.bg
 In December 2010 the Bulgarian imports from the EU Member States increased by 19.4% compared to the corresponding month of the previous year and amounted to 2.1 billion leva at CIF prices.

**Figure 2. Nominal growth of imports from EU for the period
 2008 - 2010
 (Compared to the same month of the previous year)**



The **foreign trade balance** of Bulgaria (export FOB - import CIF) with **EU** in 2010 was negative and amounted to 3.4 billion leva (Table 1.1)

The **exports** of Bulgaria to the **EU** distributed according to the **Standard International Trade Classification** showed that in 2010 more goods were exported from the prevailing part of the sections compared to the 2009 (Table 3). The largest growths were recorded in the sections “Crude materials, inedible (except fuel)”¹ and “Animal and vegetable oils, fats and waxes”². A fall was observed only in exports of one section – „Beverages and tobacco”.

The largest growths on **imports** from the **EU** were reported in sections “Crude materials, inedible (except fuel)” and „ Mineral fuels, lubricants and related materials” and the lowest in section “Machinery and transport equipment”.

¹ The section includes the following divisions: raw hides, skins and furskins; oil-seeds and oleaginous fruits; crude rubber; cork and wood; pulp and waste paper; textile fibres and their wastes; crude fertilizers and crude minerals; metalliferous ores and metal scrap; crude animal and vegetable materials, n.e.s.

² The section includes the following divisions: Animal oils and fats; Fixed vegetable fats and oils, crude, refined or fractionated; Animal or vegetable fats and oils, processed; waxes of animal or vegetable origin; inedible mixtures or preparations of animal or vegetable fats or oils, n.e.s.

ANNEX

Exports, imports and trade balance in 2009 and 2010¹ by months

Table 1.1

(Million Levs)

Months	Exports - FOB			Imports - CIF			Imports - FOB ²			Trade balance - FOB/CIF			Trade balance - FOB/FOB ²		
	Total	EU	Non EU	Total	EU	Non EU	Total	EU	Non EU	Total	EU	Non EU	Total	EU	Non EU
I.2009	1592.0	1113.0	479.0	2402.5	1423.7	978.8	2246.0	1348.8	897.2	-810.5	-310.7	-499.8	-654.0	-235.8	-418.2
II.2009	1761.9	1221.6	540.3	2591.2	1530.8	1060.4	2435.9	1450.3	985.6	-829.3	-309.2	-520.1	-674.0	-228.7	-445.3
III.2009	1844.9	1172.8	672.1	2942.5	1769.0	1173.5	2777.2	1678.6	1098.6	-1097.6	-596.2	-501.4	-932.3	-505.8	-426.5
I - III.2009	5198.8	3507.4	1691.4	7936.2	4723.5	3212.7	7459.1	4477.7	2981.4	-2737.4	-1216.1	-1521.3	-2260.3	-970.3	-1290.0
IV.2009	1628.8	1000.5	628.3	2709.2	1570.4	1138.8	2551.2	1490.9	1060.3	-1080.4	-569.9	-510.5	-922.4	-490.4	-432.0
V.2009	1771.5	1126.6	644.9	2797.8	1645.2	1152.6	2630.8	1560.4	1070.4	-1026.3	-518.6	-507.7	-859.3	-433.8	-425.5
VI.2009	1955.0	1205.9	749.1	2799.7	1735.3	1064.4	2632.6	1644.9	987.7	-844.7	-529.4	-315.3	-677.6	-439.0	-238.6
IV - VI.2009	5355.3	3333.0	2022.3	8306.7	4950.9	3355.8	7814.6	4696.2	3118.4	-2951.4	-1617.9	-1333.5	-2459.3	-1363.2	-1096.1
I - VI.2009	10554.1	6840.4	3713.7	16242.9	9674.4	6568.5	15273.7	9173.9	6099.8	-5688.8	-2834.0	-2854.8	-4719.6	-2333.5	-2386.1
VII.2009	2012.9	1425.3	587.6	2803.8	1664.1	1139.7	2640.0	1577.7	1062.3	-790.9	-238.8	-552.1	-627.1	-152.4	-474.7
VIII.2009	1920.4	1195.0	725.4	2582.8	1463.9	1118.9	2423.3	1388.6	1034.7	-662.4	-268.9	-393.5	-502.9	-193.6	-309.3
IX.2009	2043.4	1372.1	671.3	2747.3	1724.4	1022.9	2587.2	1637.9	949.3	-703.9	-352.3	-351.6	-543.8	-265.8	-278.0
VII-IX.2009	5976.7	3992.4	1984.3	8133.9	4852.4	3281.5	7650.5	4604.2	3046.3	-2157.2	-860.0	-1297.2	-1673.8	-611.8	-1062.0
I - IX.2009	16530.8	10832.8	5698.0	24376.8	14526.8	9850.0	22924.2	13778.1	9146.1	-7846.0	-3694.0	-4152.0	-6393.4	-2945.3	-3448.1
X.2009	2344.5	1490.4	854.1	3062.9	1841.4	1221.5	2879.9	1746.5	1133.4	-718.4	-351.0	-367.4	-535.4	-256.1	-279.3
XI.2009	2125.4	1376.2	749.2	2781.1	1702.4	1078.7	2616.7	1614.9	1001.8	-655.7	-326.2	-329.5	-491.3	-238.7	-252.6
XII.2009	1881.1	1155.4	725.7	2785.2	1719.1	1066.1	2623.8	1633.7	990.1	-904.1	-563.7	-340.4	-742.7	-478.3	-264.4
X-XII.2009	6351.0	4022.0	2329.0	8629.2	5262.9	3366.3	8120.4	4995.1	3125.3	-2278.2	-1240.9	-1037.3	-1769.4	-973.1	-796.3
I-XII.2009	22881.8	14854.8	8027.0	33006.0	19789.7	13216.3	31044.6	18773.2	12271.4	-10124.2	-4934.9	-5189.3	-8162.8	-3918.4	-4244.4
I.2010	1802.0	1075.2	726.8	2267.4	1275.0	992.4	2133.2	1208.9	924.3	-465.4	-199.8	-265.6	-331.2	-133.7	-197.5
II.2010	1964.3	1264.2	700.1	2302.1	1536.6	765.5	2159.5	1446.8	712.7	-337.8	-272.4	-65.4	-195.2	-182.6	-12.6
III.2010	2213.7	1294.7	919.0	2968.8	1784.2	1184.6	2798.0	1697.9	1100.1	-755.1	-489.5	-265.6	-584.3	-403.2	-181.1
I - III.2010	5980.0	3634.1	2345.9	7538.3	4595.8	2942.5	7090.7	4353.6	2737.1	-1558.3	-961.7	-596.6	-1110.7	-719.5	-391.2
IV.2010	2313.3	1327.2	986.1	3069.1	1669.1	1400.0	2890.2	1587.8	1302.4	-755.8	-341.9	-413.9	-576.9	-260.6	-316.3
V.2010	2370.3	1467.1	903.2	3225.1	1857.2	1367.9	3027.6	1759.9	1267.7	-854.8	-390.1	-464.7	-657.3	-292.8	-364.5
VI.2010	2763.8	1647.2	1116.6	3266.0	1919.9	1346.1	3067.2	1820.8	1246.4	-502.2	-272.7	-229.5	-303.4	-173.6	-129.8
IV - VI.2010	7447.4	4441.5	3005.9	9560.2	5446.2	4114.0	8985.0	5168.5	3816.5	-2112.8	-1004.7	-1108.1	-1537.6	-727.0	-810.6
I - VI.2010	13427.4	8075.6	5351.8	17098.5	10042.0	7056.5	16075.7	9522.1	6553.6	-3671.1	-1966.4	-1704.7	-2648.3	-1446.5	-1201.8
VII.2010	2963.8	1922.0	1041.8	3263.2	1833.3	1429.9	3054.5	1736.7	1317.8	-299.4	88.7	-388.1	-90.7	185.3	-276.0
VIII.2010	2848.5	1781.0	1067.5	2988.1	1751.6	1236.5	2810.0	1661.7	1148.3	-139.6	29.4	-169.0	38.5	119.3	-80.8
IX.2010	2819.2	1697.3	1121.9	3184.3	1919.0	1265.3	2997.5	1823.9	1173.6	-365.1	-221.7	-143.4	-178.3	-126.6	-51.7



VII-IX.2010	8631.5	5400.3	3231.2	9435.6	5503.9	3931.7	8862.0	5222.3	3639.7	-804.1	-103.6	-700.5	-230.5	178.0	-408.5
I - IX.2010	22058.9	13475.9	8583.0	26534.1	15545.9	10988.2	24937.7	14744.4	10193.3	-4475.2	-2070.0	-2405.2	-2878.8	-1268.5	-1610.3
X.2010	2837.1	1789.3	1047.8	3429.5	2054.8	1374.7	3217.9	1943.3	1274.6	-592.4	-265.5	-326.9	-380.8	-154.0	-226.8
XI.2010	2855.8	1757.0	1098.8	3907.7	2343.3	1564.4	3670.7	2223.5	1447.2	-1051.9	-586.3	-465.6	-814.9	-466.5	-348.4
XII.2010	2736.3	1545.3	1191.0	3605.2	2052.8	1552.4	3380.1	1951.4	1428.7	-868.9	-507.5	-361.4	-643.8	-406.1	-237.7
X-XII.2010	8429.2	5091.6	3337.6	10942.4	6450.9	4491.5	10268.7	6118.2	4150.5	-2513.2	-1359.3	-1153.9	-1839.5	-1026.6	-812.9
I-XII.2010	30488.1	18567.5	11920.6	37476.5	21996.8	15479.7	35206.4	20862.6	14343.8	-6988.4	-3429.3	-3559.1	-4718.3	-2295.1	-2423.2

¹ Data are preliminary as of 11.03.2011.

² By data of BNB for the transport costs.

Table 1.2
Growth of exports and imports for the period January – December 2010¹ compared to the same month of the previous year
(Per cent)

Months	Exports - FOB			Imports - CIF			Imports - FOB		
	Total	EU	Non EU	Total	EU	Non EU	Total	EU	Non EU
I	13.2	-3.4	51.7	-5.6	-10.4	1.4	-5.0	-10.4	3.0
II	11.5	3.5	29.6	-11.2	0.4	-27.8	-11.3	-0.2	-27.7
III	20.0	10.4	36.7	0.9	0.9	0.9	0.7	1.1	0.1
I - III	15.0	3.6	38.7	-5.0	-2.7	-8.4	-4.9	-2.8	-8.2
IV	42.0	32.7	56.9	13.3	6.3	22.9	13.3	6.5	22.8
V	33.8	30.2	40.1	15.3	12.9	18.7	15.1	12.8	18.4
VI	41.4	36.6	49.1	16.7	10.6	26.5	16.5	10.7	26.2
IV - VI	39.1	33.3	48.6	15.1	10.0	22.6	15.0	10.1	22.4
I - VI	27.2	18.1	44.1	5.3	3.8	7.4	5.3	3.8	7.4
VII	47.2	34.8	77.3	16.4	10.2	25.5	15.7	10.1	24.1
VIII	48.3	49.0	47.2	15.7	19.7	10.5	16.0	19.7	11.0
IX	38.0	23.7	67.1	15.9	11.3	23.7	15.9	11.4	23.6
VII - IX	44.4	35.3	62.8	16.0	13.4	19.8	15.8	13.4	19.5
I - IX	33.4	24.4	50.6	8.8	7.0	11.6	8.8	7.0	11.4
X	21.0	20.1	22.7	12.0	11.6	12.5	11.7	11.3	12.5
XI	34.4	27.7	46.7	40.5	37.6	45.0	40.3	37.7	44.5
XII	45.5	33.7	64.1	29.4	19.4	45.6	28.8	19.4	44.3
X-XII	32.7	26.6	43.3	26.8	22.6	33.4	26.5	22.5	32.8
I-XII	33.2	25.0	48.5	13.5	11.2	17.1	13.4	11.1	16.9

¹ Data are preliminary as of 11.03.2011.


Table2
Exports, imports and trade balance by groups of countries and main trade partners ¹
in 2009 and 2010²

Countries and groups of countries	Exports - FOB			Imports - CIF			Trade balance - FOB/CIF	
	2009	2010	Growth - %	2009	2010	Growth - %	2009	2010
	Million Levs			Million Levs			Million Levs	
Total	22881.8	30488.1	33.2	33006.0	37476.5	13.5	10124.2	-6988.4
EU	14854.8	18567.5	25.0	19789.7	21996.8	11.2	-4934.9	-3429.3
Austria	448.9	574.7	28.0	1335.4	1304.3	-2.3	-886.5	-729.6
Belgium	1298.3	1148.7	-11.5	557.6	712.6	27.8	740.7	436.1
Cyprus	106.2	89.7	-15.5	61.9	54.2	-12.4	44.3	35.5
Czech Republic	183.9	286.2	55.6	898.6	711.6	-20.8	-714.7	-425.4
Denmark	69.0	112.5	63.0	203.8	187.2	-8.1	-134.8	-74.7
Estonia	9.0	21.4	137.8	12.2	7.3	-40.2	-3.2	14.1
Finland	38.1	53.4	40.2	198.8	186.0	-6.4	-160.7	-132.6
France	1025.1	1229.0	19.9	1160.4	1231.0	6.1	-135.3	-2.0
Germany	2582.5	3244.5	25.6	4052.7	4372.0	7.9	-1470.2	-1127.5
Greece	2186.1	2418.8	10.6	2015.5	2233.4	10.8	170.6	185.4
Hungary	264.4	387.4	46.5	1101.7	1169.6	6.2	-837.3	-782.2
Ireland	15.6	16.9	8.3	95.6	105.3	10.1	-80.0	-88.4
Italy	2136.9	2953.1	38.2	2544.2	2772.5	9.0	-407.3	180.6
Latvia	24.3	33.1	36.2	15.4	22.7	47.4	8.9	10.4
Lithuania	37.0	45.7	23.5	36.2	56.3	55.5	0.8	-10.6
Luxembourg	24.6	40.0	62.6	27.1	25.8	-4.8	-2.5	14.2
Malta	12.3	12.4	0.8	14.1	50.7	259.6	-1.8	-38.3
Netherlands	362.0	460.8	27.3	907.7	1050.9	15.8	-545.7	-590.1
Poland	359.5	523.3	45.6	729.1	787.9	8.1	-369.6	-264.6
Portugal	81.7	88.6	8.4	57.3	109.5	91.1	24.4	-20.9
Romania	1975.5	2818.8	42.7	1845.8	2613.9	41.6	129.7	204.9
Slovakia	185.2	204.6	10.5	379.4	407.4	7.4	-194.2	-202.8
Slovenia	97.3	230.7	137.1	280.3	296.3	5.7	-183.0	-65.6
Spain	734.3	813.5	10.8	534.0	707.6	32.5	200.3	105.9
Sweden	128.1	152.8	19.3	190.4	196.6	3.3	-62.3	-43.8
United Kingdom	449.4	593.1	32.0	451.4	591.6	31.1	-2.0	1.5
Not specified	19.6	13.8	-29.6	83.1	32.6	-60.8	-63.5	-18.8
Non EU countries	8027.0	11920.6	48.5	13216.3	15479.7	17.1	-5189.3	-3559.1
Central and Eastern European countries	4526.9	6478.3	43.1	5933.0	6992.3	17.9	-1406.1	-514.0
of which:								
Albania	124.2	115.7	-6.8	9.8	23.6	140.8	114.4	92.1
Bosnia and Herzegovina	78.8	65.7	-16.6	8.5	12.5	47.1	70.3	53.2
Croatia	135.0	161.1	19.3	70.7	69.0	-2.4	64.3	92.1
Serbia	727.1	1073.2	47.6	281.6	393.0	39.6	445.5	680.2
The former Yugoslav Rep. of Macedonia	467.8	647.8	38.5	345.7	496.2	43.5	122.1	151.6
CIS	1179.5	1827.0	54.9	6600.9	8042.6	21.8	-5421.4	-6215.6
of which:								
Georgia	185.7	281.8	51.8	370.9	306.0	-17.5	-185.2	-24.2
Kazakhstan	33.6	40.6	20.8	141.8	14.1	-90.1	-108.2	26.5
Russian Fed.	574.1	867.4	51.1	4424.0	6050.4	36.8	-3849.9	-5183.0
Ukraine	196.0	388.2	98.1	1583.5	1568.0	-1.0	-1387.5	-1179.8



www.nsi.bg

OECD	2414.4	3583.0	48.4	2809.5	3018.8	7.4	-395.1	564.2
of which:								
Canada	61.9	54.2	-12.4	98.3	58.8	-40.2	-36.4	-4.6
Japan	28.1	32.3	14.9	148.5	136.3	-8.2	-120.4	-104.0
Korea, Rep. of	42.0	184.1	338.3	96.4	146.1	51.6	-54.4	38.0
Turkey	1655.6	2592.3	56.6	1798.3	2028.9	12.8	-142.7	563.4
USA	357.7	417.4	16.7	280.4	261.1	-6.9	77.3	156.3
EFTA	214.4	248.6	16.0	362.6	365.7	0.9	-148.2	-117.1
of which:								
Norway	44.2	45.9	3.8	41.4	16.4	-60.4	2.8	29.5
Switzerland	163.9	195.9	19.5	304.3	341.0	12.1	-140.4	-145.1
Countries not included in the upper groups								
Brazil	25.0	49.2	96.8	273.6	149.9	-45.2	-248.6	-100.7
China	187.7	369.8	97.0	891.7	964.7	8.2	-704.0	-594.9
Egypt	204.5	202.5	-1.0	44.0	153.8	249.5	160.5	48.7
India	35.8	87.0	143.0	97.7	95.4	-2.4	-61.9	-8.4
Indonesia	31.7	28.2	-11.0	32.3	34.4	6.5	-0.6	-6.2
Iran	49.7	84.1	69.2	14.0	10.4	-25.7	35.7	73.7
Israel	76.2	146.1	91.7	96.6	184.0	90.5	-20.4	-37.9
Peru	1.4	8.7	521.4	250.9	436.2	73.9	-249.5	-427.5
Singapore	430.0	366.1	-14.9	18.2	16.0	-12.1	411.8	350.1
South Africa	11.9	15.5	30.3	72.9	21.6	-70.4	-61.0	-6.1
Syria	126.8	155.2	22.4	80.6	58.6	-27.3	46.2	96.6
Taiwan	22.8	45.2	98.2	84.9	113.8	34.0	-62.1	-68.6
United Arab Emirates	87.1	64.4	-26.1	27.5	43.8	59.3	59.6	20.6
Viet Nam	20.3	40.5	99.5	71.4	55.4	-22.4	-51.1	-14.9

¹ **Partner country:**

- In case of exports (or dispatches) is the country (or Member State) of final destination of the goods
- In case of imports (or arrivals) is the country (or Member State) of consignment of the goods.

² **Data are preliminary as of 11.03.2011.**



Table 3

Exports, imports and trade balance by sections of SITC, rev.4
in 2009 and 2010¹

Sections by SITC	Exports - FOB		Growth - %	Imports - CIF		Growth - %	Trade balance - FOB/CIF	
	2009	2010		2009	2010		2009	2010
	Million Levs			Million Levs			Million Levs	
Total	22881.8	30488.1	33.2	33006.0	37476.5	13.5	-10124.2	-6988.4
of which EU	14854.8	18567.5	25.0	19789.7	21996.8	11.2	-4934.9	-3429.3
Food and live animals	2374.2	3258.4	37.2	2625.6	2856.9	8.8	-251.4	401.5
of which EU	1850.1	2473.6	33.7	1992.6	2309.8	15.9	-142.5	163.8
Beverages and tobacco	677.1	681.4	0.6	476.0	494.7	3.9	201.1	186.7
of which EU	361.4	278.3	-23.0	345.5	348.5	0.9	15.9	-70.2
Crude materials, inedible (except fuel)	1650.4	2646.8	60.4	2253.1	3146.2	39.6	-602.7	-499.4
of which EU	960.7	1553.8	61.7	558.1	1100.1	97.1	402.6	453.7
Mineral fuel, lubricants and related materials	2956.8	4141.8	40.1	6599.8	8410.0	27.4	-3643.0	-4268.2
of which EU	975.8	1035.8	6.1	925.0	1298.7	40.4	50.8	-262.9
Animals and vegetable oils, fats and waxes	154.8	203.1	31.2	136.2	171.0	25.6	18.6	32.1
of which EU	110.5	152.5	38.0	91.4	126.0	37.9	19.1	26.5
Chemical and related products n.e.c.	1759.4	2420.7	37.6	3693.0	4407.0	19.3	-1933.6	-1986.3
of which EU	711.2	980.3	37.8	2945.6	3540.7	20.2	-2234.4	-2560.4
Manufactured goods classified chiefly by material	5263.7	7069.3	34.3	5684.4	6352.3	11.7	-420.7	717.0
of which EU	3507.3	4405.0	25.6	3806.7	4172.1	9.6	-299.4	232.9
Machinery and transport equipment	3853.3	5105.2	32.5	8844.7	8745.9	-1.1	-4991.4	-3640.7
of which EU	2787.3	3645.1	30.8	7066.9	6886.6	-2.6	-4279.6	-3241.5
Miscellaneous manufactured articles	4166.0	4930.7	18.4	2613.4	2773.8	6.1	1552.6	2156.9
of which EU	3584.1	4031.3	12.5	1990.1	2132.5	7.2	1594.0	1898.8
Commodities and transactions n.e.c.	26.1	30.7	17.6	79.8	118.7	48.7	-53.7	-88.0
of which EU	6.4	11.8	84.4	67.8	81.8	20.6	-61.4	-70.0

¹ Data are preliminary as of 11.03.2011.