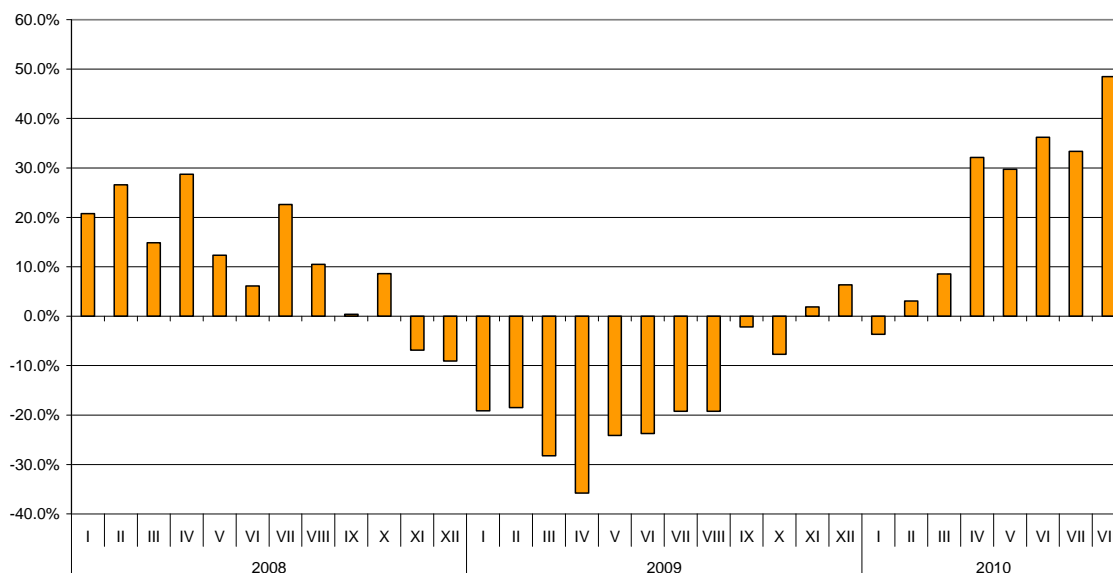


BULGARIAN TRADE WITH EU FOR THE PERIOD JANUARY – AUGUST 2010 (PRELIMINARY DATA)

In the period January - August 2010 the Bulgarian **exports** to the **EU** increased by 23.7% compared to the corresponding period of the previous year and amounted to 11.7 billion leva (Table 1.1 and 1.2). The main trade partners of Bulgaria were Italy, Germany, Romania and Greece that formed 61.3% of the total exports to EU Member states (Table.2). The exports to Italy increased by 40.1% and those to Germany by 21.4%. The most notable growth was observed in the exports to Estonia, Luxembourg, and Slovenia. The exports to Denmark and Czech Republic reported growth by 58.3% and 57% respectively. The most notable fall was registered in the exports to Cyprus and Malta.

In August 2010 the exports to the EU increased by 48.5% compared to the corresponding period of the previous year and reached to 1.8 billion leva.

**Nominal growth of exports to EU for the period 2008 - 2010
(compared to the same month of the previous year)**



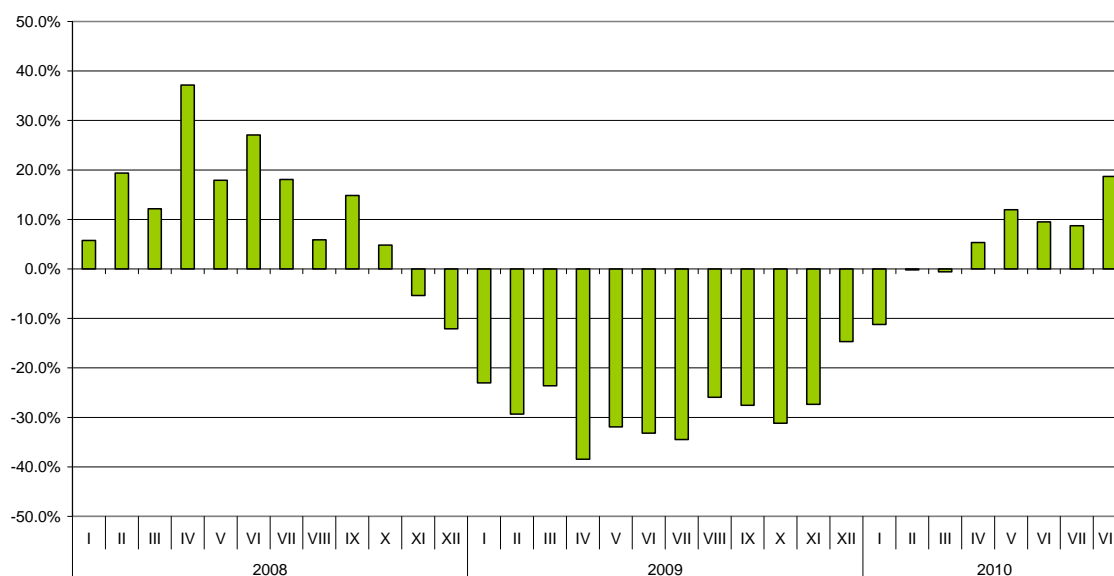
Bulgarian **imports from the EU** in the period January - August 2010 increased by 5.4% compared to the corresponding period of the previous year and amounted to 13.5 billion leva (Tables 1.1 and 1.2). The most significant growths were reported on the imports from Malta (by



96.7%) and Portugal (by 94.7%) (Table 2). The largest decrease was observed in the imports from Estonia, Denmark, Czech Republic, Cyprus and Sweden.

In August 2010 the Bulgarian **imports** from the **EU Member States** increased by 18.7% compared to the corresponding month of the previous year and amounted to 1.7 billion leva.

**Nominal growth of imports from EU for the period 2008 - 2010
(compared to the same month of the previous year)**



The **foreign trade balance** of Bulgaria (export FOB - import CIF) with **EU** in the period January – August 2010 was negative and amounted to 1.8 billion leva (Table 1.1).

In August 2010 the foreign trade balance of Bulgaria was positive and amounted to 36.6 million leva.

The **exports** of Bulgaria to **EU** distributed according to the **Standard International Trade Classification** showed that in the first eight months of 2010 more goods were exported from the prevailing part of the sections compared to the corresponding period of 2009 (Table 3). The largest growths were recorded in the sections “Crude materials, inedible (except fuel) ¹”, and “Machinery and transport equipment”. A fall was observed only in exports of one section – „Beverages and tobacco”.

The largest growths in **imports** from the **EU** were reported in sections “Crude materials, inedible (except fuel)” and “Mineral fuel, lubricants and related materials” and the lowest in section “Machinery and transport equipment”.

¹ The section includes the following divisions: raw hides, skins and furskins; oil-seeds and oleaginous fruits; crude rubber; cork and wood; pulp and waste paper; textile fibres and their wastes; crude fertilizers and crude minerals; metalliferous ores and metal scrap; crude animal and vegetable materials, n.e.s.

ANNEX

Table 1.1

EXPORTS, IMPORTS AND TRADE BALANCE FOR THE PERIOD JANUARY- AUGUST 2009 AND 2010¹ BY MONTHS

(Million Levs)

Months	Exports - FOB			Imports - CIF			Imports - FOB ²			Trade balance - FOB/CIF			Trade balance - FOB/FOB ²		
	Total	EU	Non EU	Total	EU	Non EU	Total	EU	Non EU	Total	EU	Non EU	Total	EU	Non EU
I.2009	1592.0	1113.0	479.0	2402.5	1423.7	978.8	2246.0	1348.8	897.2	-810.5	-310.7	-499.8	-654.0	-235.8	-418.2
II.2009	1761.9	1221.6	540.3	2591.2	1530.8	1060.4	2435.9	1450.3	985.6	-829.3	-309.2	-520.1	-674.0	-228.7	-445.3
III.2009	1844.9	1172.8	672.1	2942.5	1769.0	1173.5	2777.2	1678.6	1098.6	-1097.6	-596.2	-501.4	-932.3	-505.8	-426.5
I - III.2009	5198.8	3507.4	1691.4	7936.2	4723.5	3212.7	7459.1	4477.7	2981.4	-2737.4	-1216.1	-1521.3	-2260.3	-970.3	-1290.0
IV.2009	1628.8	1000.5	628.3	2709.2	1570.4	1138.8	2551.2	1490.9	1060.3	-1080.4	-569.9	-510.5	-922.4	-490.4	-432.0
V.2009	1771.5	1126.6	644.9	2797.8	1645.2	1152.6	2630.8	1560.4	1070.4	-1026.3	-518.6	-507.7	-859.3	-433.8	-425.5
VI.2009	1955.0	1205.9	749.1	2799.7	1735.3	1064.4	2632.6	1644.9	987.7	-844.7	-529.4	-315.3	-677.6	-439.0	-238.6
IV - VI.2009	5355.3	3333.0	2022.3	8306.7	4950.9	3355.8	7814.6	4696.2	3118.4	-2951.4	-1617.9	-1333.5	-2459.3	-1363.2	-1096.1
I - VI.2009	10554.1	6840.4	3713.7	16242.9	9674.4	6568.5	15273.7	9173.9	6099.8	-5688.8	-2834.0	-2854.8	-4719.6	-2333.5	-2386.1
VII.2009	2012.9	1425.3	587.6	2803.8	1664.1	1139.7	2640.0	1577.7	1062.3	-790.9	-238.8	-552.1	-627.1	-152.4	-474.7
VIII.2009	1920.4	1195.0	725.4	2582.8	1463.9	1118.9	2423.3	1388.6	1034.7	-662.4	-268.9	-393.5	-502.9	-193.6	-309.3
I-VIII.2009	14487.4	9460.7	5026.7	21629.5	12802.4	8827.1	20337.0	12140.2	8196.8	-7142.1	-3341.7	-3800.4	-5849.6	-2679.5	-3170.1
I.2010	1799.3	1072.5	726.8	2256.4	1264.0	992.4	2122.8	1198.5	924.3	-457.1	-191.5	-265.6	-323.5	-126.0	-197.5
II.2010	1959.5	1259.4	700.1	2293.5	1528.0	765.5	2151.3	1438.6	712.7	-334.0	-268.6	-65.4	-191.8	-179.2	-12.6
III.2010	2192.0	1273.0	919.0	2943.4	1758.8	1184.6	2774.0	1673.9	1100.1	-751.4	-485.8	-265.6	-582.0	-400.9	-181.1
I - III.2010	5950.8	3604.9	2345.9	7493.3	4550.8	2942.5	7048.1	4311.0	2737.1	-1542.5	-945.9	-596.6	-1097.3	-706.1	-391.2
IV.2010	2307.7	1322.1	985.6	3054.3	1654.3	1400.0	2876.2	1573.8	1302.4	-746.6	-332.2	-414.4	-568.5	-251.7	-316.8
V.2010	2364.8	1461.5	903.3	3209.6	1841.7	1367.9	3012.6	1744.9	1267.7	-844.8	-380.2	-464.6	-647.8	-283.4	-364.4
VI.2010	2759.0	1642.4	1116.6	3246.0	1899.9	1346.1	3048.2	1801.8	1246.4	-487.0	-257.5	-229.5	-289.2	-159.4	-129.8
IV - VI.2010	7431.5	4426.0	3005.5	9509.9	5395.9	4114.0	8937.0	5120.5	3816.5	-2078.4	-969.9	-1108.5	-1505.5	-694.5	-811.0
I - VI.2010	13382.3	8030.9	5351.4	17003.2	9946.7	7056.5	15985.1	9431.5	6553.6	-3620.9	-1915.8	-1705.1	-2602.8	-1400.6	-1202.2
VII.2010	2942.5	1900.7	1041.8	3239.3	1809.4	1429.9	3031.6	1713.8	1317.8	-296.8	91.3	-388.1	-89.1	186.9	-276.0
VIII.2010	2841.7	1774.2	1067.5	2974.6	1737.6	1237.0	2797.2	1648.5	1148.7	-132.9	36.6	-169.5	44.5	125.7	-81.2
I - VIII.2010	19166.5	11705.8	7460.7	23217.1	13493.7	9723.4	21813.9	12793.8	9020.1	-4050.6	-1787.9	-2262.7	-2647.4	-1088.0	-1559.4

¹ Data are preliminary as of 08.11.2010.

² By data of BNB for the transport costs.

Table 1.2

GROWTH OF EXPORTS AND IMPORTS FOR THE PERIOD JANUARY - AUGUST 2010¹ COMPARED TO THE SAME MONTH OF THE PREVIOUS YEAR

(Per cent)

Months	Exports - FOB			Imports - CIF			Imports - FOB		
	Total	EU	Non EU	Total	EU	Non EU	Total	EU	Non EU
I	13.0	-3.6	51.7	-6.1	-11.2	1.4	-5.5	-11.1	3.0
II	11.2	3.1	29.6	-11.5	-0.2	-27.8	-11.7	-0.8	-27.7
III	18.8	8.5	36.7	0.0	-0.6	0.9	-0.1	-0.3	0.1
I - III	14.5	2.8	38.7	-5.6	-3.7	-8.4	-5.5	-3.7	-8.2
IV	41.7	32.1	56.9	12.7	5.3	22.9	12.7	5.6	22.8
V	33.5	29.7	40.1	14.7	11.9	18.7	14.5	11.8	18.4
VI	41.1	36.2	49.1	15.9	9.5	26.5	15.8	9.5	26.2
IV - VI	38.8	32.8	48.6	14.5	9.0	22.6	14.4	9.0	22.4
I - VI	26.8	17.4	44.1	4.7	2.8	7.4	4.7	2.8	7.4
VII	46.2	33.4	77.3	15.5	8.7	25.5	14.8	8.6	24.1
VIII	48.0	48.5	47.2	15.2	18.7	10.6	15.4	18.7	11.0
I - VIII	32.3	23.7	48.4	7.3	5.4	10.2	7.3	5.4	10.0
¹ Data are preliminary as of 08.11.2010.									



Table 2

EXPORTS, IMPORTS AND TRADE BALANCE BY GROUPS OF COUNTRIES AND MAIN TRADE PARTNERS ¹
FOR THE PERIOD JANUARY - AUGUST 2009 AND 2010²

(Million Levs)

Countries and groups of countries	Exports - FOB			Imports - CIF			Trade balance - FOB/CIF	
	2009	2010	Growth - %	2009	2010	Growth - %	2009	2010
Total	14487.4	19166.5	32.3	21629.5	23217.1	7.3	-7142.1	-4050.6
EU	9460.7	11705.8	23.7	12802.4	13493.7	5.4	-3341.7	-1787.9
Austria	281.5	339.5	20.6	832.0	830.0	-0.2	-550.5	-490.5
Belgium	840.5	846.9	0.8	365.1	472.6	29.4	475.4	374.3
Cyprus	61.5	50.9	-17.2	38.2	31.7	-17.0	23.3	19.2
Czech Republic	111.5	175.1	57.0	529.9	439.3	-17.1	-418.4	-264.2
Denmark	41.7	66.0	58.3	134.9	110.4	-18.2	-93.2	-44.4
Estonia	4.0	11.9	197.5	9.8	4.9	-50.0	-5.8	7.0
Finland	20.6	29.5	43.2	121.3	109.2	-10.0	-100.7	-79.7
France	673.4	757.7	12.5	785.8	747.4	-4.9	-112.4	10.3
Germany	1617.6	1964.4	21.4	2733.9	2707.5	-1.0	-1116.3	-743.1
Greece	1380.4	1583.9	14.7	1288.5	1330.1	3.2	91.9	253.8
Hungary	162.7	237.4	45.9	697.1	735.0	5.4	-534.4	-497.6
Ireland	10.3	11.2	8.7	63.2	66.0	4.4	-52.9	-54.8
Italy	1420.5	1990.4	40.1	1641.3	1646.9	0.3	-220.8	343.5
Latvia	14.4	19.8	37.5	9.8	11.4	16.3	4.6	8.4
Lithuania	26.0	30.0	15.4	21.1	33.2	57.3	4.9	-3.2
Luxembourg	9.6	26.2	172.9	15.8	15.5	-1.9	-6.2	10.7
Malta	7.2	6.8	-5.6	6.0	11.8	96.7	1.2	-5.0
Netherlands	227.9	279.7	22.7	571.5	625.3	9.4	-343.6	-345.6
Poland	223.1	311.6	39.7	493.4	476.9	-3.3	-270.3	-165.3
Portugal	47.8	54.0	13.0	47.1	91.7	94.7	0.7	-37.7
Romania	1294.8	1632.4	26.1	1138.4	1615.6	41.9	156.4	16.8
Slovakia	119.0	146.2	22.9	218.6	239.4	9.5	-99.6	-93.2
Slovenia	62.7	161.0	156.8	177.9	172.9	-2.8	-115.2	-11.9
Spain	418.6	508.3	21.4	361.8	488.0	34.9	56.8	20.3
Sweden	84.4	89.5	6.0	129.5	107.9	-16.7	-45.1	-18.4
United Kingdom	289.6	367.7	27.0	295.0	353.5	19.8	-5.4	14.2
Not specified	9.4	7.8	-17.0	75.5	19.6	-74.0	-66.1	-11.8
Non EU countries	5026.7	7460.7	48.4	8827.1	9723.4	10.2	-3800.4	-2262.7
Central and Eastern European countries	2807.1	3929.1	40.0	3687.1	4315.8	17.1	-880.0	-386.7
of which:								
Albania	75.0	78.6	4.8	4.8	13.5	181.3	70.2	65.1
Bosnia and Herzegovina	33.9	40.3	18.9	6.4	9.0	40.6	27.5	31.3
Croatia	95.3	127.2	33.5	50.7	35.8	-29.4	44.6	91.4
Serbia	389.1	678.1	74.3	168.8	254.1	50.5	220.3	424.0
The former Yugoslav Rep. of Macedonia	293.7	377.7	28.6	220.6	314.3	42.5	73.1	63.4
CIS	721.4	1020.4	41.4	4476.3	4941.3	10.4	-3754.9	-3920.9
of which:								
Georgia	110.5	161.7	46.3	296.2	216.5	-26.9	-185.7	-54.8
Kazakhstan	23.0	20.8	-9.6	5.1	4.5	-11.8	17.9	16.3
Russian Fed.	344.5	530.1	53.9	2998.9	3676.7	22.6	-2654.4	-3146.6
Ukraine	124.9	158.4	26.8	1122.3	982.1	-12.5	-997.4	-823.7



OECD	1488.1	2222.3	49.3	1877.5	1922.8	2.4	-389.4	299.5
of which:								
Canada	34.0	34.4	1.2	61.6	51.4	-16.6	-27.6	-17.0
Japan	20.4	22.5	10.3	95.5	82.1	-14.0	-75.1	-59.6
Korea, Rep. of	24.8	105.7	326.2	67.4	67.1	-0.4	-42.6	38.6
Turkey	987.1	1627.4	64.9	1190.7	1308.0	9.9	-203.6	319.4
USA	245.8	242.3	-1.4	207.0	172.9	-16.5	38.8	69.4
EFTA	141.0	155.4	10.2	239.8	225.0	-6.2	-98.8	-69.6
of which:								
Norway	27.9	28.9	3.6	33.8	8.5	-74.9	-5.9	20.4
Switzerland	108.3	121.6	12.3	195.0	210.6	8.0	-86.7	-89.0
Countries not included								
in the upper groups								
Brazil	16.6	34.8	109.6	193.1	99.0	-48.7	-176.5	-64.2
China	71.9	255.1	254.8	618.5	608.4	-1.6	-546.6	-353.3
Egypt	146.5	140.6	-4.0	25.9	85.8	231.3	120.6	54.8
India	22.0	54.4	147.3	54.7	61.3	12.1	-32.7	-6.9
Indonesia	22.3	19.7	-11.7	23.0	20.4	-11.3	-0.7	-0.7
Iran	33.1	75.6	128.4	9.1	7.8	-14.3	24.0	67.8
Israel	55.8	55.6	-0.4	37.3	141.8	280.2	18.5	-86.2
Peru	0.8	7.6	850.0	178.1	300.0	68.4	-177.3	-292.4
Singapore	264.2	353.5	33.8	13.0	8.2	-36.9	251.2	345.3
South Africa	5.4	8.7	61.1	66.2	12.5	-81.1	-60.8	-3.8
Syria	72.4	109.2	50.8	46.2	41.7	-9.7	26.2	67.5
Taiwan	13.2	24.8	87.9	56.5	77.6	37.3	-43.3	-52.8
United Arab Emirates	78.2	49.0	-37.3	15.6	19.2	23.1	62.6	29.8
Viet Nam	13.3	28.1	111.3	60.5	45.5	-24.8	-47.2	-17.4

¹ **Partner country:**

- In case of exports (or dispatches) is the country (or Member State) of final destination of the goods
- In case of imports (or arrivals) is the country (or Member State) of consignment of the goods.

² **Data are preliminary as of 8.11.2010.**

(Million Levs)

Sections by SITC	Exports - FOB			Imports - CIF			Trade balance - FOB/CIF	
	2009	2010	Growth - %	2009	2010	Growth - %	2009	2010
Total	14487.4	19166.5	32.3	21629.5	23217.1	7.3	-7142.1	-4050.6
of which EU	9460.7	11705.8	23.7	12802.4	13493.7	5.4	-3341.7	-1787.9
Food and live animals	1487.6	1852.6	24.5	1715.5	1766.7	3.0	-227.9	85.9
of which EU	1125.3	1401.9	24.6	1265.3	1401.4	10.8	-140.0	0.5
Beverages and tobacco	375.1	403.0	7.4	330.9	327.1	-1.1	44.2	75.9
of which EU	204.3	166.6	-18.5	236.9	226.3	-4.5	-32.6	-59.7
Crude materials, inedible (except fuel)	949.2	1679.4	76.9	1450.5	2105.2	45.1	-501.3	-425.8
of which EU	563.6	952.9	69.1	341.5	712.5	108.6	222.1	240.4
Mineral fuel, lubricants and related materials	1826.5	2587.0	41.6	4321.7	5133.8	18.8	-2495.2	-2546.8
of which EU	608.8	720.2	18.3	581.7	786.6	35.2	27.1	-66.4
Animals and vegetable oils, fats and waxes	98.6	106.3	7.8	90.0	98.2	9.1	8.6	8.1
of which EU	71.4	81.1	13.6	58.3	69.7	19.6	13.1	11.4
Chemical and related products n.e.c.	1122.4	1520.6	35.5	2386.3	2786.0	16.7	-1263.9	-1265.4
of which EU	463.6	600.6	29.6	1908.0	2240.4	17.4	-1444.4	-1639.8
Manufactured goods classified chiefly by material	3335.8	4601.9	38.0	3744.3	3915.2	4.6	-408.5	686.7
of which EU	2247.1	2894.1	28.8	2471.0	2544.4	3.0	-223.9	349.7
Machinery and transport equipment	2458.2	3176.6	29.2	5838.2	5313.3	-9.0	-3380.0	-2136.7
of which EU	1768.3	2304.4	30.3	4618.5	4161.0	-9.9	-2850.2	-1856.6
Miscellaneous manufactured articles	2817.3	3219.1	14.3	1699.3	1709.5	0.6	1118.0	1509.6
of which EU	2403.9	2577.7	7.2	1275.1	1300.1	2.0	1128.8	1277.6
Commodities and transactions n.e.c.	16.7	20.0	19.8	52.8	62.1	17.6	-36.1	-42.1
of which EU	4.4	6.3	43.2	46.1	51.3	11.3	-41.7	-45.0

¹ Data are preliminary as of 8.11.2010.