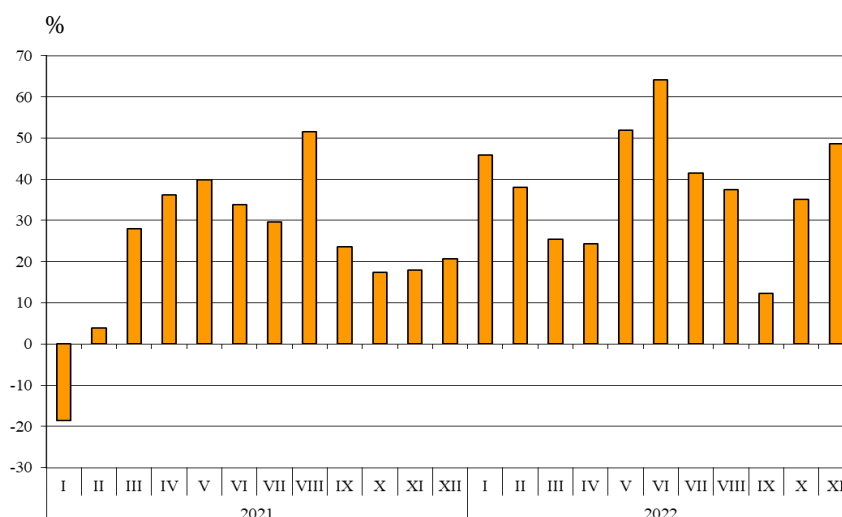


## TRADE IN GOODS OF BULGARIA WITH THIRD COUNTRIES IN THE PERIOD JANUARY - NOVEMBER 2022 (PRELIMINARY DATA)

In the period January - November 2022, the exports of goods from Bulgaria to third countries increased by 38.0% in comparison with the same period of 2021 and added up to 29 003.8 million BGN (Annex, Tables 1 and 2). The main trade partners of Bulgaria were Turkey, Serbia, Ukraine, the United States, the United Kingdom, the Republic of North Macedonia and China, which accounted for 51.5% of the exports to non-EU countries (Annex, Table 3).

In November 2022, the exports of goods from Bulgaria to third countries increased by 48.6% compared to the corresponding month of the previous year and amounted to 2 800.5 million BGN.

**Figure 1. Nominal value<sup>1</sup> change of exports of goods from Bulgaria to non EU countries  
in the period 2021 - 2022  
(Compared to the same month of the previous year)**



In the period January - November 2022, in the exports of goods from Bulgaria to third countries, distributed according to the **Standard International Trade Classification**, the most notable growth compared to the same period of 2021 was recorded in the sections ‘Mineral fuel, lubricants and related materials’ (224.6%) and ‘Animal and vegetable oils, fats and waxes’ (195.8%) (Annex, Table 4). A fall was reported in the section ‘Crude materials, inedible (except fuel)’<sup>2</sup> (4.6%).

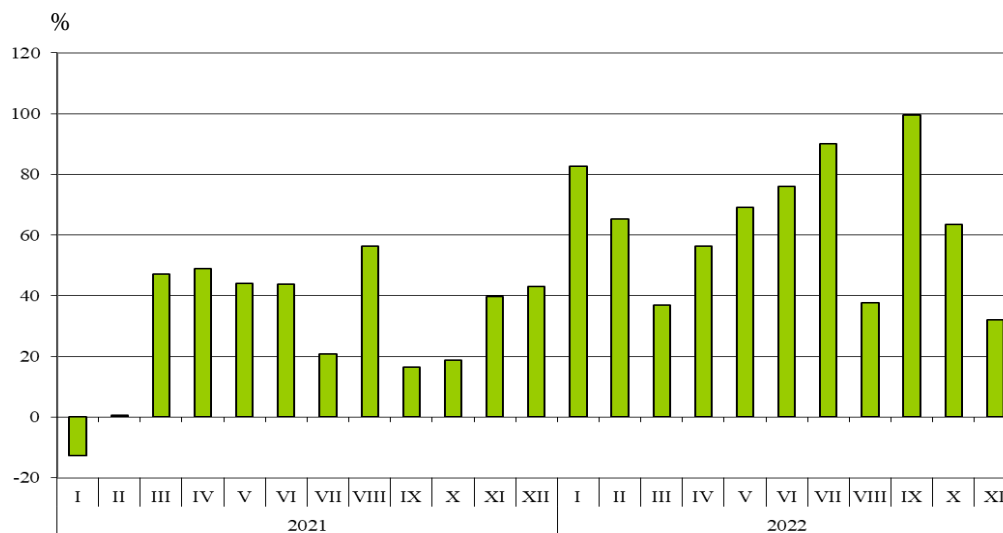
<sup>1</sup> Value changes at current prices.

<sup>2</sup> The section includes following divisions: raw hides, skins and furskins; oil-seeds and oleaginous fruits; crude rubber; cork and wood; pulp and waste paper; textile fibres and their wastes; crude fertilizers and crude minerals; metalliferous ores and metal scrap; crude animal and vegetable materials, n.e.s.

**Imports of goods to Bulgaria from third countries in the period January - November 2022** increased by 62.8% in comparison with the same period of 2021 and added up to 44 835.7 million BGN (at CIF prices)<sup>1</sup> (Annex, Tables 1 and 2). The largest amounts were reported for the goods imported from the Russian Federation, Turkey, China and Ukraine (Annex, Table 3).

**In November 2022, the imports of goods to Bulgaria from third countries** increased by 31.9% compared to the corresponding month of the previous year and amounted to 4 010.1 million BGN.

**Figure 2. Nominal value<sup>2</sup> change of imports of goods to Bulgaria from non EU countries in the period 2021 - 2022 (Compared to the same month of the previous year)**



**In the period January - November 2022**, in the imports of goods to Bulgaria from third countries, distributed according to the **Standard International Trade Classification**, the largest growth compared to the same period of 2021 was recorded in the sections ‘Animal and vegetable oils, fats and waxes’ (525.5%) and ‘Mineral fuel, lubricants and related materials’ (140.8%) (Annex, Table 4).

**The foreign trade balance of Bulgaria (exports FOB - imports CIF) with third countries in the period January - November 2022** was negative and added up to 15 831.9 million BGN (Annex, Table 1).

**In November 2022**, the foreign trade balance of Bulgaria (exports FOB - imports CIF) with third countries was also negative and amounted to 1 209.6 million BGN.

<sup>1</sup> Imports at FOB prices are calculated by BNB (<http://bnb.bg/Statistics/StExternalSector/StForeignTrade/StFTImports/index.htm?toLang= EN>).

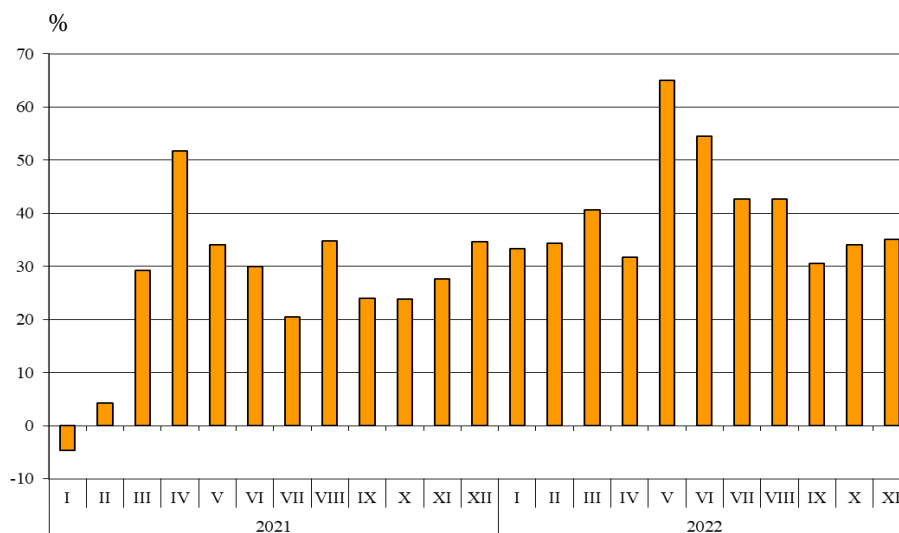
<sup>2</sup> Value changes at current prices.

### Trade in goods of Bulgaria with third countries and the EU - total

In the period **January - November 2022**, the total value of **all the goods exported** from Bulgaria amounted to 87 460.4 million BGN, which is 40.2% more than the same period of 2021 (Annex, Tables 1 and 2).

In **November 2022**, the total exports of goods added up to 8 454.6 million BGN and increased by 35.0% compared to the corresponding month of the previous year.

**Figure 3. Nominal value<sup>1</sup> change of exports of goods from Bulgaria in the period 2021 - 2022 (Compared to the same month of the previous year)**

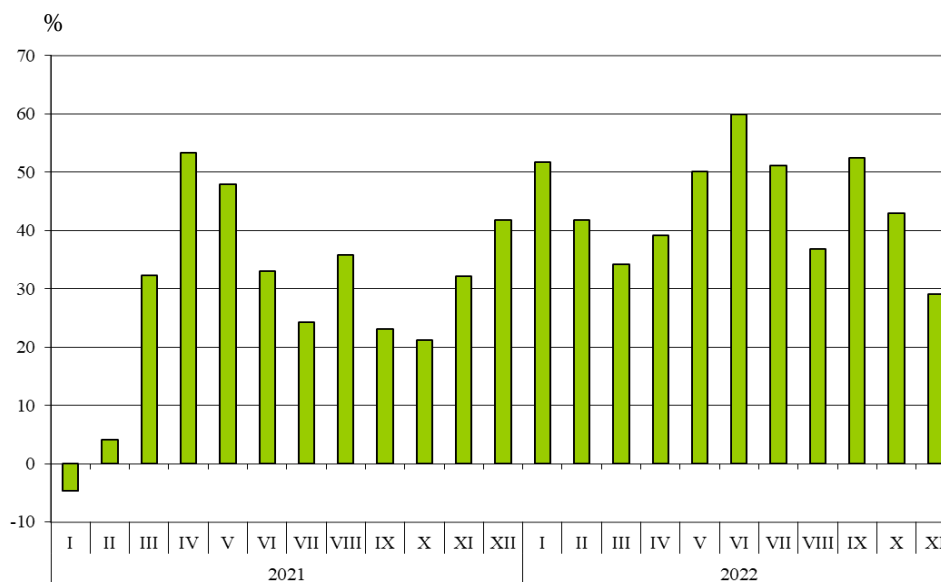


The total value of **all the goods imported** into the country in the period **January - November 2022** amounted to 99 985.3 million BGN (at CIF prices), or 44.1% more than in the same period of 2021 (Annex, Tables 1 and 2).

In **November 2022**, the total imports of goods increased by 29.1% compared to the same month of the previous year and added up to 9 757.5 million BGN.

<sup>1</sup> Value changes at current prices.

**Figure 4. Nominal value<sup>1</sup> change of imports of goods to Bulgaria in the period 2021 - 2022  
(Compared to the same month of the previous year)**



**The total foreign trade balance** (exports FOB - imports CIF) was negative in **the period January - November 2022** and amounted to 12 524.9 million BGN (Annex, Table 1).

In **November 2022**, the total foreign trade balance (exports FOB - imports CIF) was also negative and added up to 1 302.9 million BGN.

<sup>1</sup> Value changes at current prices.



Annex

Table 1

Exports, imports and trade balance of Bulgaria in the period  
January - November 2021 and 2022<sup>1</sup> by months

(Million BGN)

Months/Periods	Exports - FOB			Imports - CIF <sup>2</sup>			Trade balance - FOB/CIF		
	Total	EU	Non EU	Total	EU	Non EU	Total	EU	Non EU
I.2021	4761.6	3310.9	1450.7	5050.2	3129.4	1920.8	-288.6	181.5	-470.1
II.2021	5057.2	3317.9	1739.3	5432.4	3433.6	1998.8	-375.2	-115.7	-259.5
III.2021	5824.0	3746.3	2077.7	6689.0	3998.0	2691.0	-865.0	-251.7	-613.3
<b>I - III.2021</b>	<b>15642.8</b>	<b>10375.1</b>	<b>5267.7</b>	<b>17171.6</b>	<b>10561.0</b>	<b>6610.6</b>	<b>-1528.8</b>	<b>-185.9</b>	<b>-1342.9</b>
IV.2021	5905.3	3937.1	1968.2	6078.1	3599.7	2478.4	-172.8	337.4	-510.2
V.2021	5155.3	3357.6	1797.7	6043.0	3686.5	2356.5	-887.7	-328.9	-558.8
VI.2021	5734.5	3790.9	1943.6	6440.2	3751.9	2688.3	-705.7	39.0	-744.7
<b>IV - VI.2021</b>	<b>16795.1</b>	<b>11085.6</b>	<b>5709.5</b>	<b>18561.3</b>	<b>11038.1</b>	<b>7523.2</b>	<b>-1766.2</b>	<b>47.5</b>	<b>-1813.7</b>
<b>I - VI.2021</b>	<b>32437.9</b>	<b>21460.7</b>	<b>10977.2</b>	<b>35732.9</b>	<b>21599.1</b>	<b>14133.8</b>	<b>-3295.0</b>	<b>-138.4</b>	<b>-3156.6</b>
VII.2021	5861.3	3830.2	2031.1	6353.2	3949.7	2403.5	-491.9	-119.5	-372.4
VIII.2021	5605.9	3536.7	2069.2	6253.2	3475.9	2777.3	-647.3	60.8	-708.1
IX.2021	6057.0	3945.2	2111.8	6601.0	4167.3	2433.7	-544.0	-222.1	-321.9
<b>VII - IX.2021</b>	<b>17524.2</b>	<b>11312.1</b>	<b>6212.1</b>	<b>19207.4</b>	<b>11592.9</b>	<b>7614.5</b>	<b>-1683.2</b>	<b>-280.8</b>	<b>-1402.4</b>
<b>I - IX.2021</b>	<b>49962.1</b>	<b>32772.8</b>	<b>17189.3</b>	<b>54940.3</b>	<b>33192.0</b>	<b>21748.3</b>	<b>-4978.2</b>	<b>-419.2</b>	<b>-4559.0</b>
X.2021	6161.4	4221.7	1939.7	6880.2	4127.9	2752.3	-718.8	93.8	-812.6
XI.2021	6262.2	4377.3	1884.9	7558.6	4518.8	3039.8	-1296.4	-141.5	-1154.9
<b>I - XI.2021</b>	<b>62385.7</b>	<b>41371.8</b>	<b>21013.9</b>	<b>69379.1</b>	<b>41838.7</b>	<b>27540.4</b>	<b>-6993.4</b>	<b>-466.9</b>	<b>-6526.5</b>
I.2022	6348.2	4231.2	2117.0	7661.7	4151.1	3510.6	-1313.5	80.1	-1393.6
II.2022	6795.2	4396.0	2399.2	7703.7	4400.4	3303.3	-908.5	-4.4	-904.1
III.2022	8192.9	5587.0	2605.9	8976.0	5292.3	3683.7	-783.1	294.7	-1077.8
<b>I - III.2022</b>	<b>21336.3</b>	<b>14214.2</b>	<b>7122.1</b>	<b>24341.4</b>	<b>13843.8</b>	<b>10497.6</b>	<b>-3005.1</b>	<b>370.4</b>	<b>-3375.5</b>
IV.2022	7775.5	5329.6	2445.9	8455.1	4581.1	3874.0	-679.6	748.5	-1428.1
V.2022	8506.9	5777.0	2729.9	9070.4	5084.4	3986.0	-563.5	692.6	-1256.1
VI.2022	8862.4	5672.0	3190.4	10298.7	5568.5	4730.2	-1436.3	103.5	-1539.8
<b>IV - VI.2022</b>	<b>25144.8</b>	<b>16778.6</b>	<b>8366.2</b>	<b>27824.2</b>	<b>15234.0</b>	<b>12590.2</b>	<b>-2679.4</b>	<b>1544.6</b>	<b>-4224.0</b>
<b>I - VI.2022</b>	<b>46481.1</b>	<b>30992.8</b>	<b>15488.3</b>	<b>52165.6</b>	<b>29077.8</b>	<b>23087.8</b>	<b>-5684.5</b>	<b>1915.0</b>	<b>-7599.5</b>
VII.2022	8361.7	5485.9	2875.8	9603.9	5038.6	4565.3	-1242.2	447.3	-1689.5
VIII.2022	8001.1	5155.2	2845.9	8559.8	4739.5	3820.3	-558.7	415.7	-974.4
IX.2022	7904.8	5531.7	2373.1	10064.9	5210.0	4854.9	-2160.1	321.7	-2481.8
<b>VII - IX.2022</b>	<b>24267.6</b>	<b>16172.8</b>	<b>8094.8</b>	<b>28228.6</b>	<b>14988.1</b>	<b>13240.5</b>	<b>-3961.0</b>	<b>1184.7</b>	<b>-5145.7</b>
<b>I - IX.2022</b>	<b>70748.7</b>	<b>47165.6</b>	<b>23583.1</b>	<b>80394.2</b>	<b>44065.9</b>	<b>36328.3</b>	<b>-9645.5</b>	<b>3099.7</b>	<b>-12745.2</b>
X.2022	8257.1	5636.9	2620.2	9833.6	5336.3	4497.3	-1576.5	300.6	-1877.1
XI.2022	8454.6	5654.1	2800.5	9757.5	5747.4	4010.1	-1302.9	-93.3	-1209.6
<b>I - XI.2022</b>	<b>87460.4</b>	<b>58456.6</b>	<b>29003.8</b>	<b>99985.3</b>	<b>55149.6</b>	<b>44835.7</b>	<b>-12524.9</b>	<b>3307.0</b>	<b>-15831.9</b>

<sup>1</sup> Data are preliminary as of January 13, 2023.

<sup>2</sup> Imports at FOB prices are calculated by BNB

(<http://bnb.bg/Statistics/StExternalSector/StForeignTrade/StFTImports/index.htm?toLang= EN&toLang= EN>).

Table 2

Value changes of exports and imports of Bulgaria in the period  
January - November 2022<sup>1</sup> compared to the same period of the  
previous year

(Per cent)

Months/Periods	Exports - FOB			Imports - CIF		
	Total	EU	Non EU	Total	EU	Non EU
I	33.3	27.8	45.9	51.7	32.6	82.8
II	34.4	32.5	37.9	41.8	28.2	65.3
III	40.7	49.1	25.4	34.2	32.4	36.9
<b>I - III</b>	<b>36.4</b>	<b>37.0</b>	<b>35.2</b>	<b>41.8</b>	<b>31.1</b>	<b>58.8</b>
IV	31.7	35.4	24.3	39.1	27.3	56.3
V	65.0	72.1	51.9	50.1	37.9	69.1
VI	54.5	49.6	64.1	59.9	48.4	76.0
<b>IV - VI</b>	<b>49.7</b>	<b>51.4</b>	<b>46.5</b>	<b>49.9</b>	<b>38.0</b>	<b>67.4</b>
<b>I - VI</b>	<b>43.3</b>	<b>44.4</b>	<b>41.1</b>	<b>46.0</b>	<b>34.6</b>	<b>63.4</b>
VII	42.7	43.2	41.6	51.2	27.6	89.9
VIII	42.7	45.8	37.5	36.9	36.4	37.6
IX	30.5	40.2	12.4	52.5	25.0	99.5
<b>VII - IX</b>	<b>38.5</b>	<b>43.0</b>	<b>30.3</b>	<b>47.0</b>	<b>29.3</b>	<b>73.9</b>
<b>I - IX</b>	<b>41.6</b>	<b>43.9</b>	<b>37.2</b>	<b>46.3</b>	<b>32.8</b>	<b>67.0</b>
X	34.0	33.5	35.1	42.9	29.3	63.4
XI	35.0	29.2	48.6	29.1	27.2	31.9
<b>I - XI</b>	<b>40.2</b>	<b>41.3</b>	<b>38.0</b>	<b>44.1</b>	<b>31.8</b>	<b>62.8</b>

<sup>1</sup> Data are preliminary as of January 13, 2023.



Table 3

Exports, imports and trade balance of Bulgaria with main non EU partner countries<sup>1</sup> in the period January - November 2021 and 2022<sup>2</sup>

Countries	Exports - FOB			Imports - CIF			Trade balance - FOB/CIF	
	2021	2022	Change compared to the same period of the previous year - %	2021	2022	Change compared to the same period of the previous year - %	2021	2022
	Million BGN			Million BGN			Million BGN	
<b>Third countries - total</b>	<b>21013.9</b>	<b>29003.8</b>	<b>38.0</b>	<b>27540.4</b>	<b>44835.7</b>	<b>62.8</b>	<b>-6526.5</b>	<b>-15831.9</b>
of which:								
Albania	203.4	236.4	16.2	65.4	98.1	50.0	138.0	138.3
Bosnia and Herzegovina	168.1	178.9	6.4	51.3	48.3	-5.8	116.8	130.6
Brazil	85.6	179.2	109.3	353.0	579.2	64.1	-267.4	-400.0
Canada	126.4	184.1	45.6	235.0	217.2	-7.6	-108.6	-33.1
Chile	29.7	38.8	30.6	538.9	285.0	-47.1	-509.2	-246.2
China	1971.3	1318.6	-33.1	3778.4	5756.7	52.4	-1807.1	-4438.1
Egypt	437.2	982.9	124.8	491.5	450.0	-8.4	-54.3	532.9
Georgia	349.2	450.6	29.0	648.4	899.6	38.7	-299.2	-449.0
Gibraltar	244.5	919.0	275.9	0.0	0.3	x	244.5	918.7
India	226.2	560.5	147.8	364.9	454.6	24.6	-138.7	105.9
Indonesia	125.3	162.4	29.6	53.6	455.9	750.6	71.7	-293.5
Iran, Islamic Republic of	152.5	225.9	48.1	107.3	159.2	48.4	45.2	66.7
Israel	360.3	542.6	50.6	328.7	108.4	-67.0	31.6	434.2
Japan	97.9	135.9	38.8	359.2	419.0	16.6	-261.3	-283.1
Kazakhstan	63.6	90.5	42.3	3.7	53.8	1354.1	59.9	36.7
Korea, Republic of	406.5	213.0	-47.6	256.5	351.5	37.0	150.0	-138.5
Libya	207.7	355.7	71.3	101.7	34.0	-66.6	106.0	321.7
Morocco	182.8	158.6	-13.2	141.9	137.1	-3.4	40.9	21.5
Namibia	182.0	200.5	10.2	0.0	8.4	x	182.0	192.1
Norway	98.0	105.1	7.2	50.9	68.5	34.6	47.1	36.6
Peru	8.3	24.5	195.2	568.2	423.0	-25.6	-559.9	-398.5
Republic of North Macedonia	1000.2	1349.3	34.9	670.2	781.3	16.6	330.0	568.0
Russian Federation	789.9	881.3	11.6	5064.1	11055.1	118.3	-4274.2	-10173.8
Serbia	1296.5	2053.2	58.4	1330.8	1690.1	27.0	-34.3	363.1
Singapore	53.0	43.4	-18.1	74.1	105.2	42.0	-21.1	-61.8
South Africa	146.0	444.6	204.5	74.1	227.6	207.2	71.9	217.0
Switzerland	424.4	558.8	31.7	504.6	574.1	13.8	-80.2	-15.3
Syrian Arab Republic	7.8	8.6	10.3	3.8	10.4	173.7	4.0	-1.8
Taiwan	68.4	83.7	22.4	303.1	455.6	50.3	-234.7	-371.9
Tunisia	408.1	432.5	6.0	34.7	77.4	123.1	373.4	355.1
Turkey	3825.7	5070.2	32.5	5413.3	8409.7	55.4	-1587.6	-3339.5
Ukraine	726.3	1986.0	173.4	1492.4	3056.3	104.8	-766.1	-1070.3
United Arab Emirates	144.7	229.6	58.7	65.6	88.1	34.3	79.1	141.5
United Kingdom <sup>3</sup>	1166.1	1355.4	16.2	550.1	785.7	42.8	616.0	569.7
United States	1545.5	1807.5	17.0	518.8	1543.9	197.6	1026.7	263.6
Viet Nam	184.8	89.6	-51.5	178.6	310.8	74.0	6.2	-221.2

<sup>1</sup> Partner country:

- In case of exports (or dispatches) is the country (or Member State) of final destination of the goods.

- In case of imports (or arrivals) is the country (or Member State) of consignment of the goods.

<sup>2</sup> Data are preliminary as of January 13, 2023.

<sup>3</sup> The United Kingdom includes: Northern Ireland; Great Britain; Channel Islands and Isle of Man.

'x' - not applicable.

'0' - less than half of unit employed.



**Table 4**  
**Exports, imports and trade balance of Bulgaria with non EU countries by sections of SITC, rev. 4 in the period January - November 2021 and 2022<sup>1</sup>**

Sections by SITC	Exports - FOB			Imports - CIF			Trade balance - FOB/CIF	
	2021	2022	Change compared to the same period of the previous year - %	2021	2022	Change compared to the same period of the previous year - %	2021	2022
	Million BGN			Million BGN			Million BGN	
<b>Third countries - total</b>	<b>21013.9</b>	<b>29003.8</b>	<b>38.0</b>	<b>27540.4</b>	<b>44835.7</b>	<b>62.8</b>	<b>-6526.5</b>	<b>-15831.9</b>
Food and live animals	2982.7	4047.5	35.7	1205.2	1671.7	38.7	1777.5	2375.8
Beverages and tobacco	178.4	222.2	24.6	276.7	288.0	4.1	-98.3	-65.8
Crude materials, inedible (except fuel)	1889.1	1801.9	-4.6	4531.9	6876.7	51.7	-2642.8	-5074.8
Mineral fuel, lubricants and related materials	1968.6	6389.6	224.6	5434.2	13086.4	140.8	-3465.6	-6696.8
Animal and vegetable oils, fats and waxes	363.1	1074.2	195.8	139.3	871.3	525.5	223.8	202.9
Chemical and related products n.e.c.	2546.6	3470.4	36.3	2722.6	3960.8	45.5	-176.0	-490.4
Manufactured goods classified chiefly by material	4876.5	4662.9	-4.4	5793.5	7869.1	35.8	-917.0	-3206.2
Machinery and transport equipment	3515.2	4456.8	26.8	5331.2	7698.1	44.4	-1816.0	-3241.3
Miscellaneous manufactured articles	2612.3	2804.7	7.4	2046.6	2497.9	22.1	565.7	306.8
Commodities and transactions n.e.c.	81.4	73.6	-9.6	59.2	15.7	-73.5	22.2	57.9

<sup>1</sup> Data are preliminary as of January 13, 2023.