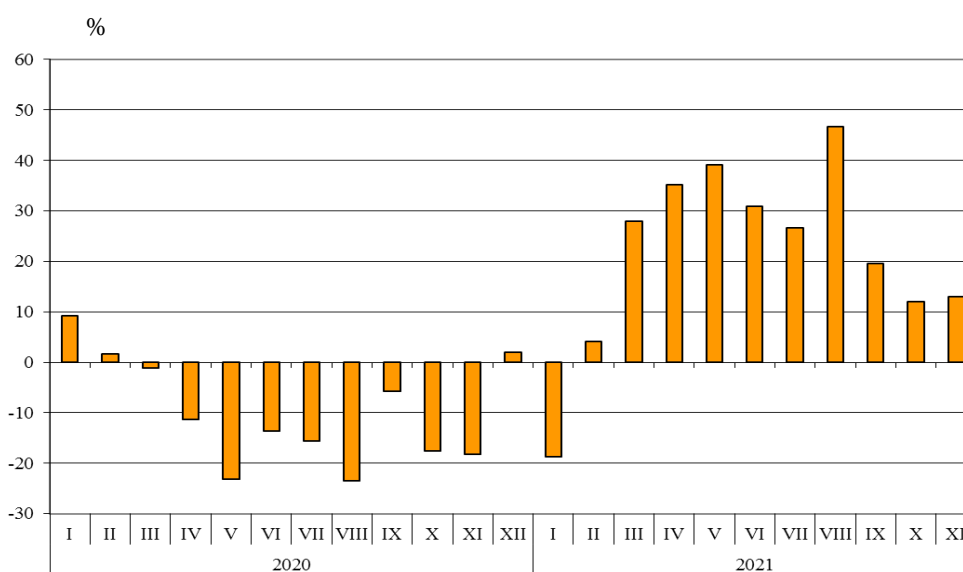


TRADE IN GOODS OF BULGARIA WITH THIRD COUNTRIES IN THE PERIOD JANUARY - NOVEMBER 2021 (PRELIMINARY DATA)

In the period January - November 2021 the exports of goods from Bulgaria to third countries increased by 20.0% in comparison with the same period of 2020 and added up to 20 593.9 million BGN (Annex, Tables 1 and 2). Main trade partners of Bulgaria were Turkey, China, the United States, Serbia, the United Kingdom, the Republic of North Macedonia, the Russian Federation and Ukraine, which accounted for 58.9% of the exports to non EU countries (Annex, Table 3).

In November 2021 the exports of goods from Bulgaria to third countries grew by 12.9% compared to the corresponding month of the previous year and amounted to 1 804.4 million BGN.

**Figure 1. Nominal value¹ change of exports of goods from Bulgaria to non EU countries
in the period 2020 - 2021
(Compared to the same month of the previous year)**



In the period January - November 2021 in the exports of goods from Bulgaria to third countries, distributed according to the **Standard International Trade Classification**, the most notable growth compared to the same period of 2020 was recorded in section 'Mineral fuel, lubricants and related materials' (35.9%) (Annex, Table 4). A fall was reported only in section 'Beverages and tobacco' (10.9%).

Imports of goods to Bulgaria from third countries in the period January - November 2021 increased by 27.8% in comparison with the same period of 2020 and added up to 27 522.2 million BGN (at CIF prices)²

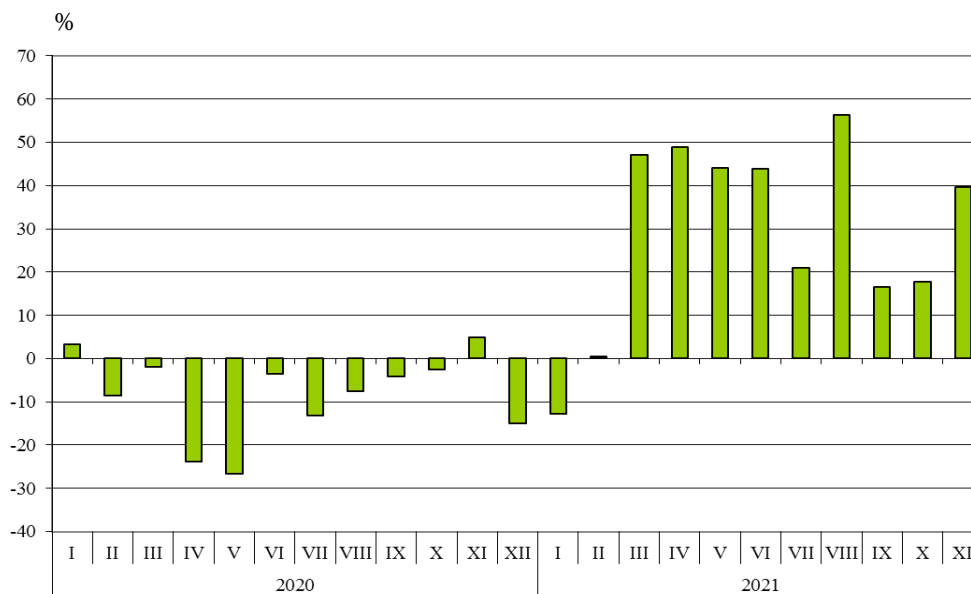
¹ Value changes at current prices.

² Imports at FOB prices are calculated by BNB (<http://bnb.bg/Statistics/StExternalSector/StForeignTrade/StFTImports/index.htm?toLang= EN>).

(Annex, Tables 1 and 2). The largest amounts were reported for the goods imported from Turkey, the Russian Federation, China and Ukraine (Annex, Table 3).

In **November 2021** the imports of goods to Bulgaria from third countries grew by 39.6% compared to the corresponding month of the previous year and amounted to 3 035.8 million BGN.

Figure 2. Nominal value¹ change of imports of goods to Bulgaria from non EU countries in the period 2020 - 2021 (Compared to the same month of the previous year)



In the period **January - November 2021** in the imports of goods to Bulgaria from third countries, distributed according to the **Standard International Trade Classification**, the largest growth compared to the same period of 2020 was recorded in the sections ‘Mineral fuel, lubricants and related materials’ (63.8%) and ‘Manufactured goods classified chiefly by material’² (38.1%) (Annex, Table 4).). The most notable fall was observed in section ‘Animal and vegetable oils, fats and waxes ‘ (9.1%).

The foreign trade balance of Bulgaria (export FOB - import CIF) with third countries in the period **January - November 2021** was negative and added up to 6 928.3 million BGN (Annex, Table 1).

In **November 2021** the foreign trade balance of Bulgaria (export FOB - import CIF) with third countries was also negative and amounted to 1 231.4 million BGN.

¹ Value changes at current prices.

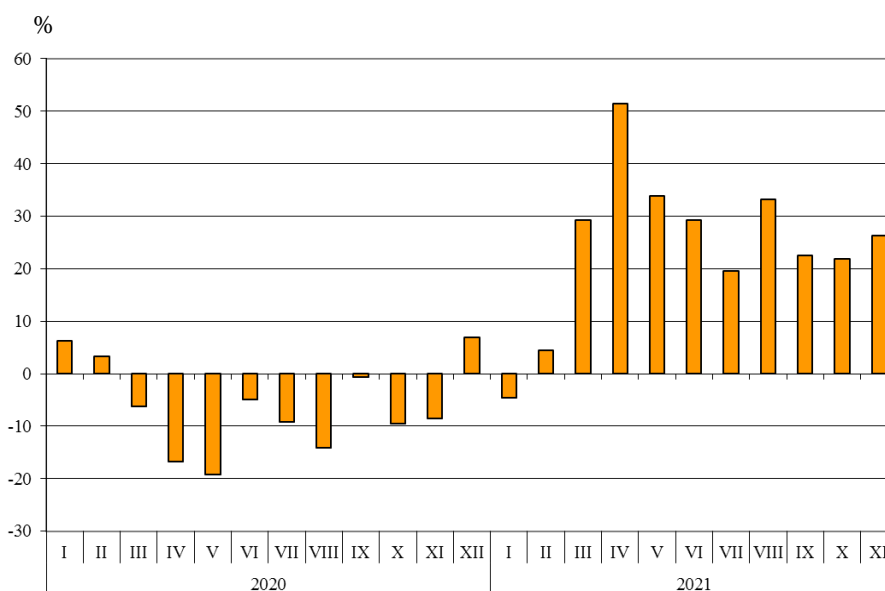
² The section includes the following divisions: leather, leather manufactures, n.e.s., and dressed furskins; rubber manufactures, n.e.s.; cork and wood manufactures (excluding furniture); paper, paperboard and articles of paper pulp, of paper or of paperboard; textile yarn, fabrics, made-up articles, n.e.s., and related products; non-metallic mineral manufactures, n.e.s.; iron and steel; non-ferrous metals.

Trade in goods of Bulgaria with third countries and EU - total

In the period **January - November 2021** the total value of **all the goods exported** from Bulgaria amounted to 61 992.4 million BGN, which is 23.3% more than the same period of 2020 (Annex, Tables 1 and 2).

In **November 2021** the **total exports** of goods added up to 6 196.1 million BGN and increased by 26.3% compared to the corresponding month of the previous year.

Figure 3. Nominal value¹ change of exports of goods from Bulgaria in the period 2020 - 2021 (Compared to the same month of the previous year)

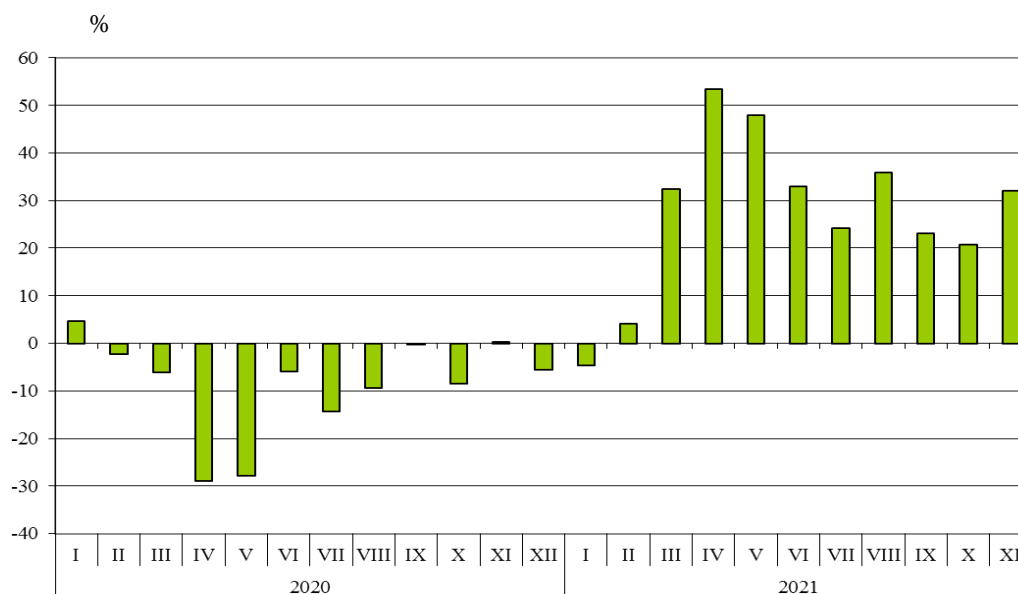


The total value of **all the goods imported** in the country in the period **January - November 2021** amounted to 69 356.5 million BGN (at CIF prices), or by 26.3% more than the same period of 2020 (Annex, Tables 1 and 2).

In **November 2021** the **total imports** of goods increased by 32.0% compared to the same month of the previous year and added up to 7 551.9 million BGN.

¹ Value changes at current prices.

**Figure 4. Nominal value¹ change of imports of goods to Bulgaria in the period 2020 - 2021
(Compared to the same month of the previous year)**



The total foreign trade balance (exports FOB - import CIF) was negative in **the period January - November 2021** and amounted to 7 364.1 million BGN (Annex, Table 1).

In **November 2021** the total foreign trade balance (exports FOB - import CIF) was also negative and added up to 1 355.8 million BGN.

¹ Value changes at current prices.



Annex

Table 1

Exports, imports and trade balance of Bulgaria in the period
January - November 2020 and 2021¹ by months

(Million BGN)

| Months/Periods | Exports - FOB | | | Imports - CIF ² | | | Trade balance - FOB/CIF | | |
|----------------------|----------------|----------------|----------------|----------------------------|----------------|----------------|-------------------------|---------------|----------------|
| | Total | EU | Non EU | Total | EU | Non EU | Total | EU | Non EU |
| I.2020 | 4990.9 | 3207.9 | 1783.0 | 5299.0 | 3098.6 | 2200.4 | -308.1 | 109.3 | -417.4 |
| II.2020 | 4849.6 | 3174.6 | 1675.0 | 5216.8 | 3227.4 | 1989.4 | -367.2 | -52.8 | -314.4 |
| III.2020 | 4506.0 | 2883.5 | 1622.5 | 5053.6 | 3223.8 | 1829.8 | -547.6 | -340.3 | -207.3 |
| I - III.2020 | 14346.5 | 9266.0 | 5080.5 | 15569.4 | 9549.8 | 6019.6 | -1222.9 | -283.8 | -939.1 |
| IV.2020 | 3890.5 | 2444.9 | 1445.6 | 3964.4 | 2299.7 | 1664.7 | -73.9 | 145.2 | -219.1 |
| V.2020 | 3844.5 | 2558.3 | 1286.2 | 4084.8 | 2447.9 | 1636.9 | -240.3 | 110.4 | -350.7 |
| VI.2020 | 4412.7 | 2959.7 | 1453.0 | 4842.2 | 2973.3 | 1868.9 | -429.5 | -13.6 | -415.9 |
| IV - VI.2020 | 12147.7 | 7962.9 | 4184.8 | 12891.4 | 7720.9 | 5170.5 | -743.7 | 242.0 | -985.7 |
| I - VI.2020 | 26494.2 | 17228.9 | 9265.3 | 28460.8 | 17270.7 | 11190.1 | -1966.6 | -41.8 | -1924.8 |
| VII.2020 | 4865.8 | 3299.3 | 1566.5 | 5113.5 | 3125.4 | 1988.1 | -247.7 | 173.9 | -421.6 |
| VIII.2020 | 4160.8 | 2795.2 | 1365.6 | 4602.3 | 2826.3 | 1776.0 | -441.5 | -31.1 | -410.4 |
| IX.2020 | 4885.8 | 3177.8 | 1708.0 | 5361.9 | 3270.5 | 2091.4 | -476.1 | -92.7 | -383.4 |
| VII - IX.2020 | 13912.4 | 9272.3 | 4640.1 | 15077.7 | 9222.2 | 5855.5 | -1165.3 | 50.1 | -1215.4 |
| I - IX.2020 | 40406.6 | 26501.2 | 13905.4 | 43538.5 | 26492.9 | 17045.6 | -3131.9 | 8.3 | -3140.2 |
| X.2020 | 4977.1 | 3324.9 | 1652.2 | 5674.6 | 3355.0 | 2319.6 | -697.5 | -30.1 | -667.4 |
| XI.2020 | 4907.5 | 3309.6 | 1597.9 | 5721.9 | 3546.8 | 2175.1 | -814.4 | -237.2 | -577.2 |
| I - XI.2020 | 50291.2 | 33135.7 | 17155.5 | 54935.0 | 33394.7 | 21540.3 | -4643.8 | -259.0 | -4384.8 |
| I.2021 | 4761.0 | 3310.9 | 1450.1 | 5051.1 | 3130.4 | 1920.7 | -290.1 | 180.5 | -470.6 |
| II.2021 | 5061.9 | 3319.2 | 1742.7 | 5434.6 | 3435.8 | 1998.8 | -372.7 | -116.6 | -256.1 |
| III.2021 | 5821.7 | 3747.0 | 2074.7 | 6689.8 | 3998.6 | 2691.2 | -868.1 | -251.6 | -616.5 |
| I - III.2021 | 15644.6 | 10377.1 | 5267.5 | 17175.5 | 10564.8 | 6610.7 | -1530.9 | -187.7 | -1343.2 |
| IV.2021 | 5891.6 | 3937.9 | 1953.7 | 6080.7 | 3602.0 | 2478.7 | -189.1 | 335.9 | -525.0 |
| V.2021 | 5148.6 | 3359.7 | 1788.9 | 6043.0 | 3686.3 | 2356.7 | -894.4 | -326.6 | -567.8 |
| VI.2021 | 5701.3 | 3799.1 | 1902.2 | 6440.6 | 3752.4 | 2688.2 | -739.3 | 46.7 | -786.0 |
| IV - VI.2021 | 16741.5 | 11096.7 | 5644.8 | 18564.3 | 11040.7 | 7523.6 | -1822.8 | 56.0 | -1878.8 |
| I - VI.2021 | 32386.1 | 21473.8 | 10912.3 | 35739.8 | 21605.5 | 14134.3 | -3353.7 | -131.7 | -3222.0 |
| VII.2021 | 5814.3 | 3831.5 | 1982.8 | 6354.8 | 3951.4 | 2403.4 | -540.5 | -119.9 | -420.6 |
| VIII.2021 | 5541.1 | 3537.6 | 2003.5 | 6254.3 | 3476.5 | 2777.8 | -713.2 | 61.1 | -774.3 |
| IX.2021 | 5988.9 | 3947.1 | 2041.8 | 6603.6 | 4166.4 | 2437.2 | -614.7 | -219.3 | -395.4 |
| VII - IX.2021 | 17344.3 | 11316.2 | 6028.1 | 19212.7 | 11594.3 | 7618.4 | -1868.4 | -278.1 | -1590.3 |
| I - IX.2021 | 49730.4 | 32790.0 | 16940.4 | 54952.5 | 33199.8 | 21752.7 | -5222.1 | -409.8 | -4812.3 |
| X.2021 | 6065.9 | 4216.8 | 1849.1 | 6852.1 | 4118.4 | 2733.7 | -786.2 | 98.4 | -884.6 |
| XI.2021 | 6196.1 | 4391.7 | 1804.4 | 7551.9 | 4516.1 | 3035.8 | -1355.8 | -124.4 | -1231.4 |
| I - XI.2021 | 61992.4 | 41398.5 | 20593.9 | 69356.5 | 41834.3 | 27522.2 | -7364.1 | -435.8 | -6928.3 |

¹ Data are preliminary as of 13-th January 2022.

² Imports at FOB prices are calculated by BNB

<http://bnb.bg/Statistics/StExternalSector/StForeignTrade/StFTImports/index.htm?toLang= EN&toLang= EN>

Table 2

**Value changes of exports and imports of Bulgaria in the period
January - November 2021¹ compared to the same period of the previous
year**

(Per cent)

| Months/Periods | Exports - FOB | | | Imports - CIF | | |
|-----------------|---------------|-------------|-------------|---------------|-------------|-------------|
| | Total | EU | Non EU | Total | EU | Non EU |
| I | -4.6 | 3.2 | -18.7 | -4.7 | 1.0 | -12.7 |
| II | 4.4 | 4.6 | 4.0 | 4.2 | 6.5 | 0.5 |
| III | 29.2 | 29.9 | 27.9 | 32.4 | 24.0 | 47.1 |
| I - III | 9.0 | 12.0 | 3.7 | 10.3 | 10.6 | 9.8 |
| IV | 51.4 | 61.1 | 35.1 | 53.4 | 56.6 | 48.9 |
| V | 33.9 | 31.3 | 39.1 | 47.9 | 50.6 | 44.0 |
| VI | 29.2 | 28.4 | 30.9 | 33.0 | 26.2 | 43.8 |
| IV - VI | 37.8 | 39.4 | 34.9 | 44.0 | 43.0 | 45.5 |
| I - VI | 22.2 | 24.6 | 17.8 | 25.6 | 25.1 | 26.3 |
| VII | 19.5 | 16.1 | 26.6 | 24.3 | 26.4 | 20.9 |
| VIII | 33.2 | 26.6 | 46.7 | 35.9 | 23.0 | 56.4 |
| IX | 22.6 | 24.2 | 19.5 | 23.2 | 27.4 | 16.5 |
| VII - IX | 24.7 | 22.0 | 29.9 | 27.4 | 25.7 | 30.1 |
| I - IX | 23.1 | 23.7 | 21.8 | 26.2 | 25.3 | 27.6 |
| X | 21.9 | 26.8 | 11.9 | 20.8 | 22.8 | 17.9 |
| XI | 26.3 | 32.7 | 12.9 | 32.0 | 27.3 | 39.6 |
| I - XI | 23.3 | 24.9 | 20.0 | 26.3 | 25.3 | 27.8 |

¹ Data are preliminary as of 13-th January 2022.



Table 3
Exports, imports and trade balance of Bulgaria with main non EU partner countries¹ in the period January - November 2020 and 2021²

| Countries | Exports - FOB | | | Imports - CIF | | | Trade balance - FOB/CIF | |
|-------------------------------|----------------|----------------|-------------------------------------------------------------|----------------|----------------|-------------------------------------------------------------|-------------------------|----------------|
| | 2020 | 2021 | Change compared to the same period of the previous year - % | 2020 | 2021 | Change compared to the same period of the previous year - % | 2020 | 2021 |
| | Million BGN | | | Million BGN | | | Million BGN | |
| Third countries -total | 17155.5 | 20593.9 | 20.0 | 21540.3 | 27522.2 | 27.8 | -4384.8 | -6928.3 |
| of which: | | | | | | | | |
| Albania | 158.4 | 207.0 | 30.7 | 68.1 | 65.7 | -3.5 | 90.3 | 141.3 |
| Bosnia and Herzegovina | 145.2 | 168.1 | 15.8 | 38.3 | 51.3 | 33.9 | 106.9 | 116.8 |
| Brazil | 79.2 | 59.7 | -24.6 | 196.5 | 349.0 | 77.6 | -117.3 | -289.3 |
| Canada | 223.4 | 118.0 | -47.2 | 287.5 | 234.7 | -18.4 | -64.1 | -116.7 |
| China | 1594.2 | 1957.2 | 22.8 | 2784.0 | 3763.3 | 35.2 | -1189.8 | -1806.1 |
| Egypt | 306.1 | 414.4 | 35.4 | 629.8 | 491.5 | -22.0 | -323.7 | -77.1 |
| Georgia | 238.6 | 348.4 | 46.0 | 777.6 | 653.3 | -16.0 | -539.0 | -304.9 |
| Gibraltar | 199.0 | 244.5 | 22.9 | 0.1 | 0.0 | -100.0 | 198.9 | 244.5 |
| India | 202.7 | 214.4 | 5.8 | 261.3 | 363.7 | 39.2 | -58.6 | -149.3 |
| Indonesia | 66.4 | 120.3 | 81.2 | 229.8 | 53.6 | -76.7 | -163.4 | 66.7 |
| Iran, Islamic Republic of | 176.8 | 152.4 | -13.8 | 36.4 | 107.3 | 194.8 | 140.4 | 45.1 |
| Israel | 188.8 | 342.3 | 81.3 | 122.9 | 328.8 | 167.5 | 65.9 | 13.5 |
| Japan | 91.7 | 96.2 | 4.9 | 271.0 | 359.4 | 32.6 | -179.3 | -263.2 |
| Kazakhstan | 59.0 | 63.5 | 7.6 | 23.3 | 3.7 | -84.1 | 35.7 | 59.8 |
| Korea, Republic of | 148.1 | 389.2 | 162.8 | 241.2 | 256.5 | 6.3 | -93.1 | 132.7 |
| Libya | 208.2 | 205.5 | -1.3 | 0.0 | 101.7 | x | 208.2 | 103.8 |
| Morocco | 156.7 | 180.5 | 15.2 | 96.8 | 141.9 | 46.6 | 59.9 | 38.6 |
| Namibia | 277.7 | 181.9 | -34.5 | 0.0 | 0.0 | x | 277.7 | 181.9 |
| Norway | 85.4 | 97.9 | 14.6 | 42.1 | 50.9 | 20.9 | 43.3 | 47.0 |
| Peru | 13.7 | 8.1 | -40.9 | 537.9 | 572.8 | 6.5 | -524.2 | -564.7 |
| Republic of North Macedonia | 784.6 | 1002.0 | 27.7 | 537.0 | 670.8 | 24.9 | 247.6 | 331.2 |
| Russian Federation | 771.2 | 783.2 | 1.6 | 3375.7 | 5064.2 | 50.0 | -2604.5 | -4281.0 |
| Serbia | 888.7 | 1292.2 | 45.4 | 1091.5 | 1331.1 | 22.0 | -202.8 | -38.9 |
| Singapore | 37.6 | 53.0 | 41.0 | 61.3 | 74.1 | 20.9 | -23.7 | -21.1 |
| South Africa | 198.7 | 136.9 | -31.1 | 53.7 | 74.1 | 38.0 | 145.0 | 62.8 |
| Switzerland | 329.7 | 423.1 | 28.3 | 440.5 | 504.6 | 14.6 | -110.8 | -81.5 |
| Syrian Arab Republic | 5.2 | 7.8 | 50.0 | 0.7 | 3.8 | 442.9 | 4.5 | 4.0 |
| Taiwan | 75.2 | 59.9 | -20.3 | 192.4 | 303.0 | 57.5 | -117.2 | -243.1 |
| Tunisia | 225.3 | 407.1 | 80.7 | 28.8 | 34.7 | 20.5 | 196.5 | 372.4 |
| Turkey | 3166.8 | 3803.5 | 20.1 | 3835.4 | 5411.4 | 41.1 | -668.6 | -1607.9 |
| Ukraine | 409.3 | 725.7 | 77.3 | 1039.6 | 1493.0 | 43.6 | -630.3 | -767.3 |
| United Arab Emirates | 127.0 | 139.5 | 9.8 | 51.5 | 65.6 | 27.4 | 75.5 | 73.9 |
| United Kingdom ³ | 1197.4 | 1152.1 | -3.8 | 678.7 | 550.3 | -18.9 | 518.7 | 601.8 |
| United States | 1000.8 | 1420.4 | 41.9 | 687.0 | 518.6 | -24.5 | 313.8 | 901.8 |
| Viet-Nam | 69.7 | 178.4 | 156.0 | 122.4 | 176.8 | 44.4 | -52.7 | 1.6 |

¹ Partner country:

- In case of exports (or dispatches) is the country (or Member State) of final destination of the goods.

- In case of imports (or arrivals) is the country (or Member State) of consignment of the goods.

² Data are preliminary as of 13-th January 2022.

³ The United Kingdom includes: Northern Ireland; Great Britain; Channel Islands and Isle of Man.

'x' - not applicable.

'0' - less than half of unit employed.



Table 4
Exports, imports and trade balance of Bulgaria with non EU countries by sections of SITC, rev.4 in the period January - November 2020 and 2021¹

| Sections by SITC | Exports - FOB | | | Imports - CIF | | | Trade balance - FOB/CIF | |
|---------------------------------------------------|----------------|----------------|-------------------------------------------------------------|----------------|----------------|-------------------------------------------------------------|-------------------------|----------------|
| | 2020 | 2021 | Change compared to the same period of the previous year - % | 2020 | 2021 | Change compared to the same period of the previous year - % | 2020 | 2021 |
| | Million BGN | | | Million BGN | | | Million BGN | |
| Third countries - total | 17155.5 | 20593.9 | 20.0 | 21540.3 | 27522.2 | 27.8 | -4384.8 | -6928.3 |
| Food and live animals | 2145.7 | 2898.1 | 35.1 | 1045.7 | 1200.2 | 14.8 | 1100.0 | 1697.9 |
| Beverages and tobacco | 196.7 | 175.2 | -10.9 | 225.4 | 276.7 | 22.8 | -28.7 | -101.5 |
| Crude materials, inedible (except fuel) | 1385.5 | 1872.1 | 35.1 | 4634.0 | 4535.9 | -2.1 | -3248.5 | -2663.8 |
| Mineral fuel, lubricants and related materials | 1444.8 | 1963.0 | 35.9 | 3316.9 | 5433.9 | 63.8 | -1872.1 | -3470.9 |
| Animal and vegetable oils, fats and waxes | 354.6 | 363.0 | 2.4 | 159.0 | 144.6 | -9.1 | 195.6 | 218.4 |
| Chemical and related products n.e.c. | 2324.7 | 2452.8 | 5.5 | 2023.8 | 2722.1 | 34.5 | 300.9 | -269.3 |
| Manufactured goods classified chiefly by material | 4025.0 | 4752.5 | 18.1 | 4187.9 | 5781.8 | 38.1 | -162.9 | -1029.3 |
| Machinery and transport equipment | 2946.9 | 3475.7 | 17.9 | 4325.1 | 5332.6 | 23.3 | -1378.2 | -1856.9 |
| Miscellaneous manufactured articles | 2273.9 | 2560.4 | 12.6 | 1576.7 | 2031.3 | 28.8 | 697.2 | 529.1 |
| Commodities and transactions n.e.c. | 57.7 | 81.1 | 40.6 | 45.8 | 63.1 | 37.8 | 11.9 | 18.0 |

¹ Data are preliminary as of 13-th January 2022.