

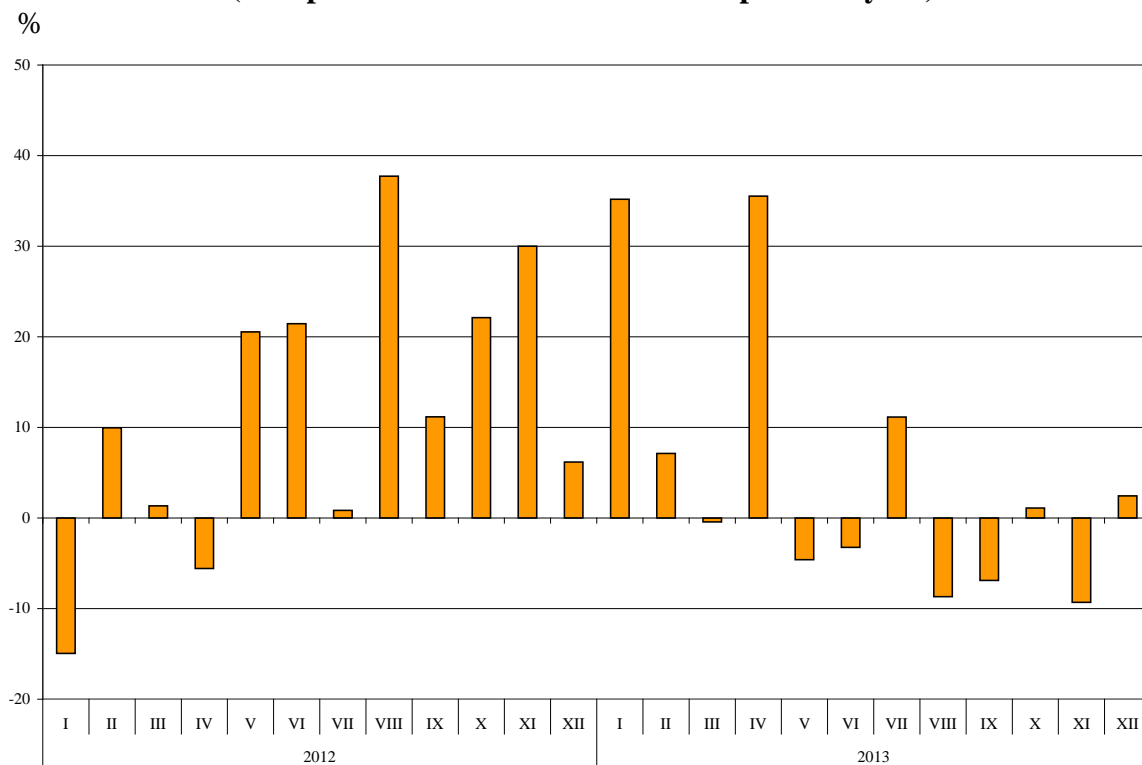


## BULGARIAN TRADE WITH THIRD COUNTRIES IN 2013 (PRELIMINARY DATA)

In **2013** the Bulgarian **exports to third countries** have increased by 3.5% compared to 2012 and have amounted to 17.3 Billion BGN (Annex, Table 1 and 2). Main trade partners of Bulgaria were Turkey, China, Russian Federation, Ukraine, Gibraltar, and Serbia which accounted for 50.0% of the exports to non EU countries (Annex, Table 3).

**In December 2013** the **exports to third countries** have increased by 2.4% compared to the corresponding month of the previous year and amounted to 1.4 Billion BGN.

**Figure 1. Nominal value<sup>1</sup> change of exports of Bulgaria to non EU countries for the period 2012 - 2013**  
(Compared to the same month of the previous year)



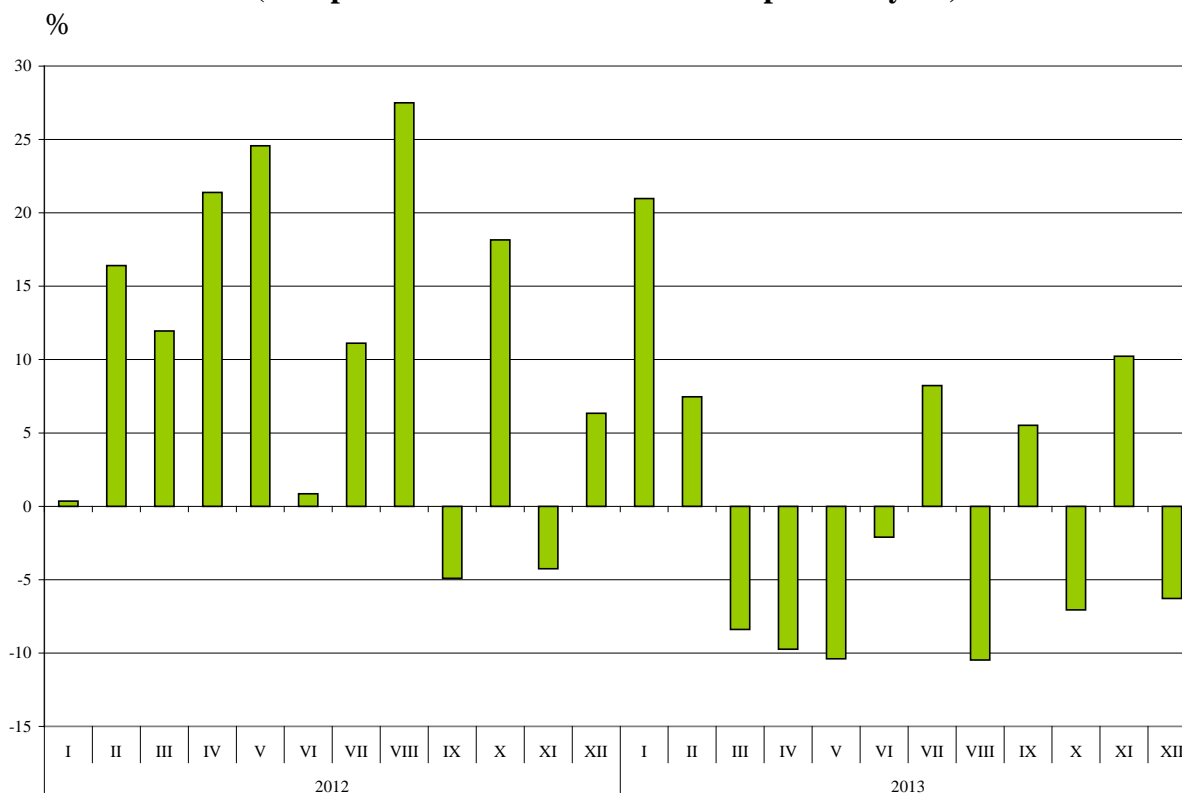
**Bulgarian imports from third countries in 2013** have decreased by 1.0% compared to 2012 and have added up to 20.3 Billion BGN (at CIF prices) (Annex, Tables 1 and 2). The largest amounts were reported for the goods imported from Russian Federation, Turkey, China and Ukraine (Annex, Table 3).

**In December 2013** Bulgarian imports from third countries have decreased by 6.3% compared to the corresponding month of the previous year and have amounted to 1.5 Billion BGN.

<sup>1</sup> Value changes at current prices.



www.nsi.bg **Figure 2. Nominal value<sup>1</sup> change of imports of Bulgaria to non EU countries for the period 2012 - 2013 (Compared to the same month of the previous year)**



The foreign trade balance of Bulgaria (export FOB - import CIF) with third countries in 2013 was negative and added up to 3 047.4 Million BGN (Annex, Table 1). The trade balance at FOB/FOB prices (after elimination of transport and insurance costs on imports) was also negative and amounted to 1 961.0 Million BGN.

In December 2013 the foreign trade balance of Bulgaria (export FOB - import CIF) with third countries was negative and amounted to 151.3 Million BGN.

In 2013 compared to 2012 the largest growths in the exports of Bulgaria to third countries distributed according to the **Standard International Trade Classification** were recorded in the sections “Food and live animals” (72.7%) (Annex, Table 4). The most notable fall was reported in section “Crude materials, inedible (except fuels)”<sup>2</sup> (9.7%).

In imports from third countries the largest growth was reported in section “Food and live animals” (28.2%) while the most notable fall was observed in section “Animals and vegetable oils, fats and waxes” (35.0%).

<sup>1</sup> Value changes at current prices.

<sup>2</sup> The section includes following divisions: raw hides, skins and furskins; oil-seeds and oleaginous fruits; crude rubber; cork and wood; pulp and waste paper; textile fibres and their wastes; crude fertilizers and crude minerals; metalliferous ores and metal scrap; crude animal and vegetable materials, n.e.s.

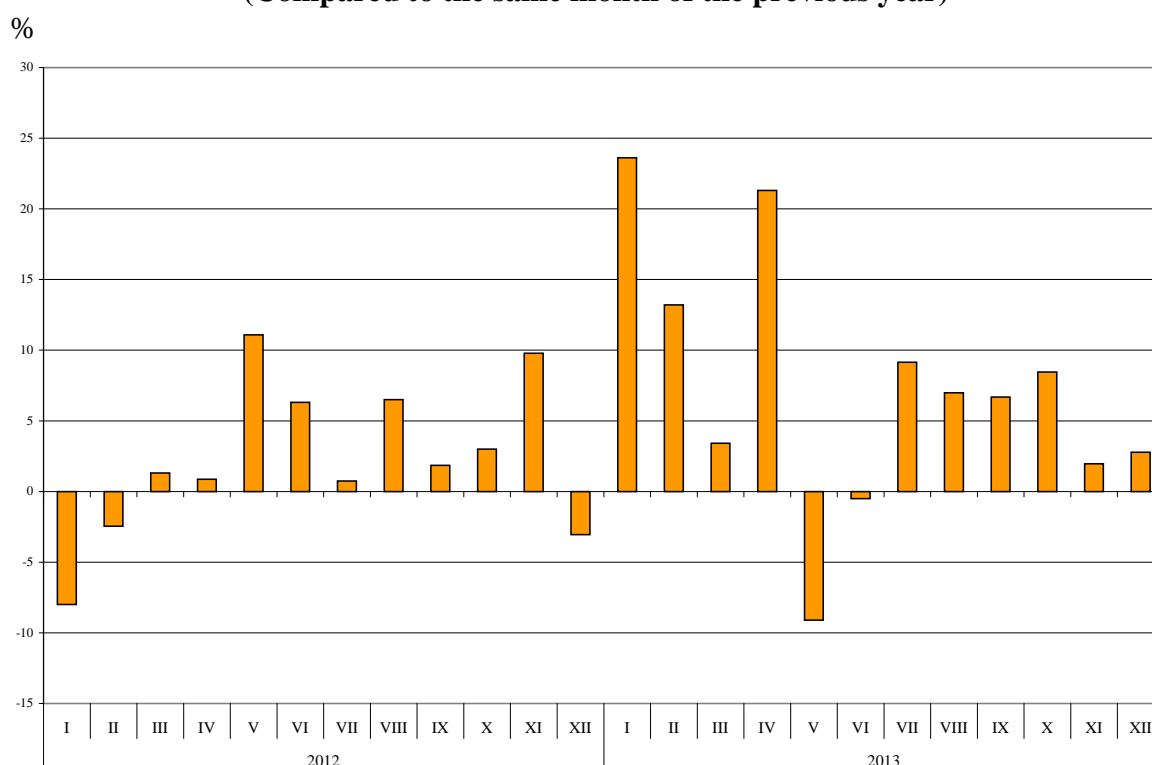


## Bulgarian trade with third countries and EU - total

**In 2013** the value of **all exported goods** from Bulgaria amounted to 43.4 Billion BGN and compared to 2012 the exports have increased by 6.8% (Annex, Table 1 and 2).

**In December 2013** the total exports added up to 3.1 Billion BGN and have increased by 2.8% compared to the corresponding month of the previous year.

**Figure 3. Nominal value<sup>1</sup> change of exports of Bulgaria for the period 2012 - 2013  
(Compared to the same month of the previous year)**



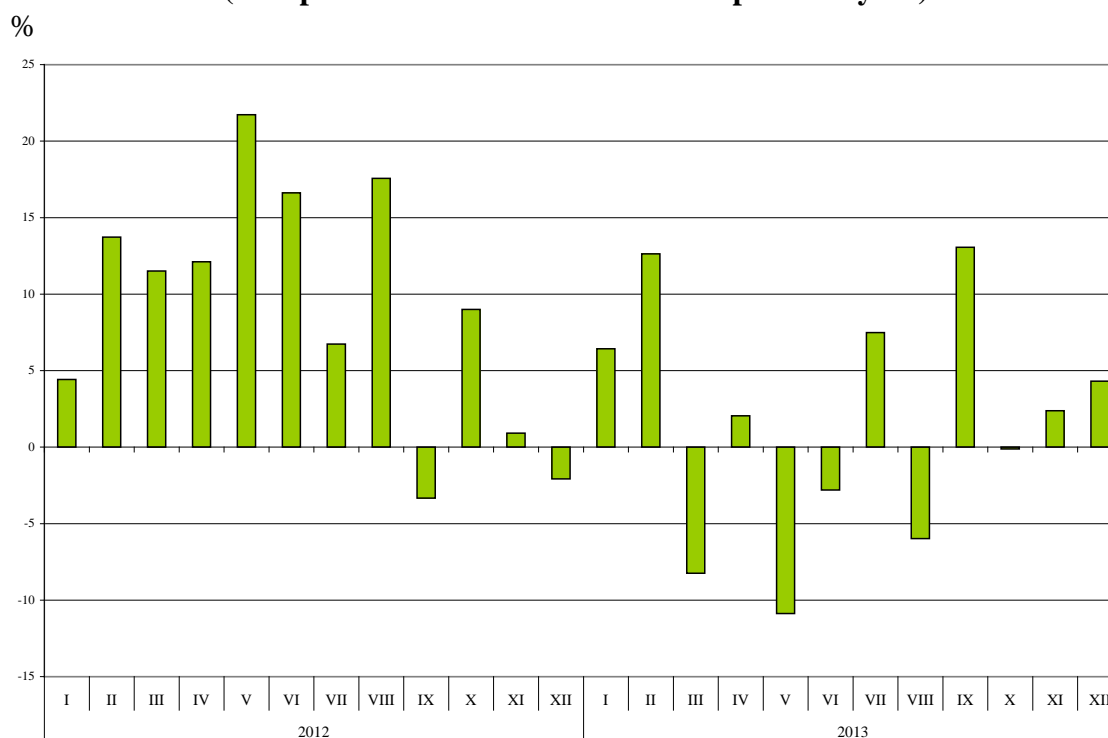
The total value of **all the goods imported in** the country **in 2013** have amounted to 50.5 Billion BGN (at CIF prices), or by 1.3% more than 2012 (Annex, Table 1 and 2).

**In December 2013** the total imports have increased by 4.3% compared to the corresponding month of the previous year and have added up to 4.0 Billion BGN.

<sup>1</sup> Value changes at current prices.



**Figure 4. Nominal value<sup>1</sup> change of imports of Bulgaria for the period 2012 - 2013  
(Compared to the same month of the previous year)**



The **total foreign trade balance** (exports FOB - import CIF) was negative in 2013 and amounted to 7 056.6 Million BGN which was 2 114.2 Million BGN less than the balance in 2012 (Annex, Table 1 and 2). At FOB/FOB prices (after elimination of transport and insurance costs on imports) in 2013 the total foreign trade balance was also negative and amounted to 4 580.7 Million BGN.

In December 2013 the total foreign trade balance (exports FOB - import CIF) was negative and added up to 887.5 Million BGN. The trade balance at FOB/FOB prices was also negative and amounted to 687.1 Million BGN.

<sup>1</sup> Value changes at current prices.

Table 1

www.nsi.bg

Exports, imports and trade balance of Bulgaria in 2012 and 2013<sup>1</sup> by months

(Million BGN)

Months/Periods	Exports - FOB			Imports - CIF			Imports - FOB <sup>2</sup>			Trade balance - FOB/CIF			Trade balance - FOB/FOB <sup>2</sup>		
	Total	EU <sup>3</sup>	Non EU <sup>4</sup>	Total	EU <sup>3</sup>	Non EU <sup>4</sup>	Total	EU <sup>3</sup>	Non EU <sup>4</sup>	Total	EU <sup>3</sup>	Non EU <sup>4</sup>	Total	EU <sup>3</sup>	Non EU <sup>4</sup>
I.2012	2810.3	1733.9	1076.4	3501.3	2130.3	1371.0	3330.7	2029.9	1300.8	-691.0	-396.4	-294.6	-520.4	-296.0	-224.4
II.2012	2862.9	1659.7	1203.2	3603.3	2125.2	1478.1	3433.5	2032.3	1401.2	-740.4	-465.5	-274.9	-570.6	-372.6	-198.0
III.2012	3363.6	2053.3	1310.3	4207.2	2540.7	1666.5	4008.0	2426.2	1581.8	-843.6	-487.4	-356.2	-644.4	-372.9	-271.5
<b>I - III.2012</b>	<b>9036.8</b>	<b>5446.9</b>	<b>3589.9</b>	<b>11311.8</b>	<b>6796.2</b>	<b>4515.6</b>	<b>10772.2</b>	<b>6488.4</b>	<b>4283.8</b>	<b>-2275.0</b>	<b>-1349.3</b>	<b>-925.7</b>	<b>-1735.4</b>	<b>-1041.5</b>	<b>-693.9</b>
IV.2012	3171.8	1950.5	1221.3	4277.3	2348.4	1928.9	4068.0	2245.9	1822.1	-1105.5	-397.9	-707.6	-896.2	-295.4	-600.8
V.2012	3647.7	2149.9	1497.8	4646.8	2679.1	1967.7	4420.4	2556.6	1863.8	-999.1	-529.2	-469.9	-772.7	-406.7	-366.0
VI.2012	3462.2	2017.5	1444.7	4372.3	2643.4	1728.9	4158.3	2517.6	1640.7	-910.1	-625.9	-284.2	-696.1	-500.1	-196.0
<b>IV - VI.2012</b>	<b>10281.7</b>	<b>6117.9</b>	<b>4163.8</b>	<b>13296.4</b>	<b>7670.9</b>	<b>5625.5</b>	<b>12646.7</b>	<b>7320.1</b>	<b>5326.6</b>	<b>-3014.7</b>	<b>-1553.0</b>	<b>-1461.7</b>	<b>-2365.0</b>	<b>-1202.2</b>	<b>-1162.8</b>
<b>I - VI.2012</b>	<b>19318.5</b>	<b>11564.8</b>	<b>7753.7</b>	<b>24608.2</b>	<b>14467.1</b>	<b>10141.1</b>	<b>23418.9</b>	<b>13808.5</b>	<b>9610.4</b>	<b>-5289.7</b>	<b>-2902.3</b>	<b>-2387.4</b>	<b>-4100.4</b>	<b>-2243.7</b>	<b>-1856.7</b>
VII.2012	3645.9	2251.4	1394.5	4341.6	2657.5	1684.1	4134.1	2536.4	1597.7	-695.7	-406.1	-289.6	-488.2	-285.0	-203.2
VIII.2012	3658.4	1979.5	1678.9	4115.4	2323.0	1883.4	3913.7	2134.6	1779.1	-457.0	-252.5	-204.5	-255.3	-155.1	-100.2
IX.2012	3549.9	2120.9	1429.0	4033.4	2351.8	1681.6	3836.8	2248.9	1587.9	-483.5	-230.9	-252.6	-286.9	-128.0	-158.9
<b>VII - IX.2012</b>	<b>10854.2</b>	<b>6351.8</b>	<b>4502.4</b>	<b>12490.4</b>	<b>7241.3</b>	<b>5249.1</b>	<b>11884.6</b>	<b>6919.9</b>	<b>4964.7</b>	<b>-1636.2</b>	<b>-889.5</b>	<b>-746.7</b>	<b>-1030.4</b>	<b>-568.1</b>	<b>-462.3</b>
<b>I - IX.2012</b>	<b>30172.7</b>	<b>17916.6</b>	<b>12256.1</b>	<b>37098.6</b>	<b>21708.4</b>	<b>15390.2</b>	<b>35303.5</b>	<b>20728.4</b>	<b>14575.1</b>	<b>-6925.9</b>	<b>-3791.8</b>	<b>-3134.1</b>	<b>-5130.8</b>	<b>-2811.8</b>	<b>-2319.0</b>
X.2012	3637.5	2106.5	1531.0	4537.8	2630.0	1907.8	4316.2	2514.0	1802.2	-900.3	-523.5	-376.8	-678.7	-407.5	-271.2
XI.2012	3802.9	2230.6	1572.3	4340.5	2718.9	1621.6	4131.3	2594.9	1536.4	-537.6	-488.3	-49.3	-328.4	-364.3	35.9
XII.2012	3009.8	1680.1	1329.7	3816.8	2202.1	1614.7	3639.6	2105.7	1533.9	-807.0	-522.0	-285.0	-629.8	-425.6	-204.2
<b>X - XII.2012</b>	<b>10450.2</b>	<b>6017.2</b>	<b>4433.0</b>	<b>12695.1</b>	<b>7551.0</b>	<b>5144.1</b>	<b>12087.1</b>	<b>7214.6</b>	<b>4872.5</b>	<b>-2244.9</b>	<b>-1533.8</b>	<b>-711.1</b>	<b>-1636.9</b>	<b>-1197.4</b>	<b>-439.5</b>
<b>I - XII.2012</b>	<b>40622.9</b>	<b>23933.8</b>	<b>16689.1</b>	<b>49793.7</b>	<b>29259.4</b>	<b>20534.3</b>	<b>47390.6</b>	<b>27943.0</b>	<b>19447.6</b>	<b>-9170.8</b>	<b>-5325.6</b>	<b>-3845.2</b>	<b>-6767.7</b>	<b>-4009.2</b>	<b>-2758.5</b>
I.2013	3474.0	2018.8	1455.2	3726.2	2067.6	1658.6	3540.1	1974.3	1565.8	-252.2	-48.8	-203.4	-66.1	44.5	-110.6
II.2013	3241.1	1952.2	1288.9	4058.6	2470.1	1588.5	3852.3	2350.6	1501.7	-817.5	-517.9	-299.6	-611.2	-398.4	-212.8
III.2013	3478.4	2173.7	1304.7	3860.3	2333.6	1526.7	3681.2	2232.5	1448.7	-381.9	-159.9	-222.0	-202.8	-58.8	-144.0
<b>I-III.2013</b>	<b>10193.5</b>	<b>6144.7</b>	<b>4048.8</b>	<b>11645.1</b>	<b>6871.3</b>	<b>4773.8</b>	<b>11073.6</b>	<b>6557.4</b>	<b>4516.2</b>	<b>-1451.6</b>	<b>-726.6</b>	<b>-725.0</b>	<b>-880.1</b>	<b>-412.7</b>	<b>-467.4</b>
IV.2013	3847.7	2192.4	1655.3	4365.0	2623.9	1741.1	4159.1	2502.3	1656.8	-517.3	-431.5	-85.8	-311.4	-309.9	-1.5
V.2013	3315.6	1886.7	1428.9	4141.1	2377.9	1763.2	3942.0	2272.0	1670.0	-825.5	-491.2	-334.3	-626.4	-385.3	-241.1
VI.2013	3444.6	2046.7	1397.9	4249.7	2557.1	1692.6	4043.8	2440.8	1603.0	-805.1	-510.4	-294.7	-599.2	-394.1	-205.1
<b>IV - VI.2013</b>	<b>10607.9</b>	<b>6125.8</b>	<b>4482.1</b>	<b>12755.8</b>	<b>7558.9</b>	<b>5196.9</b>	<b>12144.9</b>	<b>7215.1</b>	<b>4929.8</b>	<b>-2147.9</b>	<b>-1433.1</b>	<b>-714.8</b>	<b>-1537.0</b>	<b>-1089.3</b>	<b>-447.7</b>
<b>I - VI.2013</b>	<b>20801.4</b>	<b>12270.5</b>	<b>8530.9</b>	<b>24400.9</b>	<b>14430.2</b>	<b>9970.7</b>	<b>23218.5</b>	<b>13772.5</b>	<b>9446.0</b>	<b>-3599.5</b>	<b>-2159.7</b>	<b>-1439.8</b>	<b>-2417.1</b>	<b>-1502.0</b>	<b>-915.1</b>
VII.2013	3979.6	2429.7	1549.9	4666.4	2843.7	1822.7	4435.2	2711.5	1723.7	-686.8	-414.0	-272.8	-455.6	-281.8	-173.8
VIII.2013	3913.9	2380.7	1533.2	3869.6	2183.5	1686.1	3678.1	2085.2	1592.9	44.3	197.2	-152.9	235.8	295.5	-59.7
IX.2013	3787.3	2456.7	1330.6	4560.4	2785.9	1774.5	4332.6	2655.4	1677.2	-773.1	-329.2	-443.9	-545.3	-198.7	-346.6
<b>VII - IX.2013</b>	<b>11680.8</b>	<b>7267.1</b>	<b>4413.7</b>	<b>13096.4</b>	<b>7813.1</b>	<b>5283.3</b>	<b>12445.9</b>	<b>7452.1</b>	<b>4993.8</b>	<b>-1415.6</b>	<b>-546.0</b>	<b>-869.6</b>	<b>-765.1</b>	<b>-185.0</b>	<b>-580.1</b>
<b>I - IX.2013</b>	<b>32482.2</b>	<b>19537.6</b>	<b>12944.6</b>	<b>37497.3</b>	<b>22243.3</b>	<b>15254.0</b>	<b>35664.4</b>	<b>21224.6</b>	<b>14439.8</b>	<b>-5015.1</b>	<b>-2705.7</b>	<b>-2309.4</b>	<b>-3182.2</b>	<b>-1687.0</b>	<b>-1495.2</b>
X.2013	3944.9	2396.9	1548.0	4532.6	2759.4	1773.2	4304.1	2629.6	1674.5	-587.7	-362.5	-225.2	-359.2	-232.7	-126.5
XI.2013	3877.3	2451.3	1426.0	4443.6	2656.1	1787.5	4229.5	2538.5	1691.0	-566.3	-204.8	-361.5	-352.2	-87.2	-265.0
XII.2013	3093.6	1731.5	1362.1	3981.1	2467.7	1513.4	3780.7	2344.3	1436.4	-887.5	-736.2	-151.3	-687.1	-612.8	-74.3
<b>X - XII.2013</b>	<b>10915.8</b>	<b>6579.7</b>	<b>4336.1</b>	<b>12957.3</b>	<b>7883.2</b>	<b>5074.1</b>	<b>12314.3</b>	<b>7512.4</b>	<b>4801.9</b>	<b>-2041.5</b>	<b>-1303.5</b>	<b>-738.0</b>	<b>-1398.5</b>	<b>-932.7</b>	<b>-465.8</b>
<b>I - XII.2013</b>	<b>43398.0</b>	<b>26117.3</b>	<b>17280.7</b>	<b>50454.6</b>	<b>30126.5</b>	<b>20328.1</b>	<b>47978.7</b>	<b>28737.0</b>	<b>19241.7</b>	<b>-7056.6</b>	<b>-4009.2</b>	<b>-3047.4</b>	<b>-4580.7</b>	<b>-2619.7</b>	<b>-1961.0</b>

<sup>1</sup> Data are preliminary as of 10.02.2014.

<sup>2</sup> By data of BNB for the transport costs.

<sup>3</sup> EU including Croatia also for the periods prior 1<sup>st</sup> of July 2013.

<sup>4</sup> Non EU excluding Croatia also for the periods prior 1<sup>st</sup> of July 2013.



Table 2

Value changes of exports and imports of Bulgaria in 2013<sup>1</sup> compared to the same period of the previous year

(Per cent)

Months/Periods	Exports - FOB			Imports - CIF			Imports - FOB		
	Total	EU <sup>2</sup>	Non EU <sup>3</sup>	Total	EU <sup>2</sup>	Non EU <sup>3</sup>	Total	EU <sup>2</sup>	Non EU <sup>3</sup>
I	23.6	16.4	35.2	6.4	-2.9	21.0	6.3	-2.7	20.4
II	13.2	17.6	7.1	12.6	16.2	7.5	12.2	15.7	7.2
III	3.4	5.9	-0.4	-8.2	-8.2	-8.4	-8.2	-8.0	-8.4
<b>I - III</b>	<b>12.8</b>	<b>12.8</b>	<b>12.8</b>	<b>2.9</b>	<b>1.1</b>	<b>5.7</b>	<b>2.8</b>	<b>1.1</b>	<b>5.4</b>
IV	21.3	12.4	35.5	2.1	11.7	-9.7	2.2	11.4	-9.1
V	-9.1	-12.2	-4.6	-10.9	-11.2	-10.4	-10.8	-11.1	-10.4
VI	-0.5	1.4	-3.2	-2.8	-3.3	-2.1	-2.8	-3.1	-2.3
<b>IV - VI</b>	<b>3.2</b>	<b>0.1</b>	<b>7.6</b>	<b>-4.1</b>	<b>-1.5</b>	<b>-7.6</b>	<b>-4.0</b>	<b>-1.4</b>	<b>-7.4</b>
<b>I - VI</b>	<b>7.7</b>	<b>6.1</b>	<b>10.0</b>	<b>-0.8</b>	<b>-0.3</b>	<b>-1.7</b>	<b>-0.9</b>	<b>-0.3</b>	<b>-1.7</b>
VII	9.2	7.9	11.1	7.5	7.0	8.2	7.3	6.9	7.9
VIII	7.0	20.3	-8.7	-6.0	-2.2	-10.5	-6.0	-2.3	-10.5
IX	6.7	15.8	-6.9	13.1	18.5	5.5	12.9	18.1	5.6
<b>VII - IX</b>	<b>7.6</b>	<b>14.4</b>	<b>-2.0</b>	<b>4.9</b>	<b>7.9</b>	<b>0.7</b>	<b>4.7</b>	<b>7.7</b>	<b>0.6</b>
<b>I - IX</b>	<b>7.7</b>	<b>9.0</b>	<b>5.6</b>	<b>1.1</b>	<b>2.5</b>	<b>-0.9</b>	<b>1.0</b>	<b>2.4</b>	<b>-0.9</b>
X	8.5	13.8	1.1	-0.1	4.9	-7.1	-0.3	4.6	-7.1
XI	2.0	9.9	-9.3	2.4	-2.3	10.2	2.4	-2.2	10.1
XII	2.8	3.1	2.4	4.3	12.1	-6.3	3.9	11.3	-6.4
<b>X - XII</b>	<b>4.5</b>	<b>9.3</b>	<b>-2.2</b>	<b>2.1</b>	<b>4.4</b>	<b>-1.4</b>	<b>1.9</b>	<b>4.1</b>	<b>-1.4</b>
<b>I - XII</b>	<b>6.8</b>	<b>9.1</b>	<b>3.5</b>	<b>1.3</b>	<b>3.0</b>	<b>-1.0</b>	<b>1.2</b>	<b>2.8</b>	<b>-1.1</b>

<sup>1</sup> Data are preliminary as of 10.02.2014.

<sup>2</sup> EU including Croatia also for the periods prior 1<sup>st</sup> of July 2013.

<sup>3</sup> Non EU excluding Croatia also for the periods prior 1<sup>st</sup> of July 2013.



Table 3

Exports, imports and trade balance of Bulgaria with main non EU partner countries<sup>1</sup>  
in 2012 and 2013<sup>2</sup>

Countries	Exports - FOB			Imports - CIF			Trade balance - FOB/CIF	
	2012	2013	Change compared to the same period of the previous year - %	2012	2013	Change compared to the same period of the previous year - %	2012	2013
	Million BGN			Million BGN			Million BGN	
<b>Third countries<sup>3</sup> -total</b>	<b>16689.1</b>	<b>17280.7</b>	<b>3.5</b>	<b>20534.3</b>	<b>20328.1</b>	<b>-1.0</b>	<b>-3845.2</b>	<b>-3047.4</b>
of which:								
Albania	97.9	120.9	23.5	37.1	33.4	-10.0	60.8	87.5
Bosnia and Herzegovina	68.6	76.4	11.4	31.1	49.6	59.5	37.5	26.8
Brazil	67.6	26.4	-60.9	281.1	99.4	-64.6	-213.5	-73.0
Canada	207.3	147.5	-28.8	68.3	32.1	-53.0	139.0	115.4
China	1163.7	1264.1	8.6	1483.0	1489.6	0.4	-319.3	-225.5
Egypt	335.8	348.2	3.7	112.1	117.5	4.8	223.7	230.7
Former Yugoslav Republic of Macedonia	768.0	682.8	-11.1	493.4	538.7	9.2	274.6	144.1
Georgia	557.6	364.0	-34.7	336.2	419.0	24.6	221.4	-55.0
Gibraltar	1432.0	786.9	-45.0	0.0	0.3	0.0	1432.0	786.6
India	66.8	63.3	-5.2	146.8	239.7	63.3	-80.0	-176.4
Indonesia	36.1	50.7	40.4	50.4	55.5	10.1	-14.3	-4.8
Iran, Islamic Republic of	34.9	69.0	97.7	8.7	3.5	-59.8	26.2	65.5
Israel	163.4	177.1	8.4	112.2	89.8	-20.0	51.2	87.3
Japan	47.4	54.9	15.8	124.0	127.4	2.7	-76.6	-72.5
Kazakhstan	59.8	65.5	9.5	77.3	87.6	13.3	-17.5	-22.1
Korea, Republic of	228.9	231.9	1.3	183.4	167.1	-8.9	45.5	64.8
Namibia	395.5	268.1	-32.2	0.0	0.4	0.0	395.5	267.7
Norway	60.0	68.9	14.8	15.4	30.8	100.0	44.6	38.1
Peru	6.4	12.7	98.4	162.6	18.2	-88.8	-156.2	-5.5
Russian Federation	1100.2	1112.7	1.1	10363.0	9355.3	-9.7	-9262.8	-8242.6
Serbia	865.2	725.4	-16.2	494.8	511.3	3.3	370.4	214.1
Singapore	93.8	649.7	592.6	29.0	25.2	-13.1	64.8	624.5
South Africa	229.5	288.6	25.8	65.4	75.1	14.8	164.1	213.5
Switzerland	307.8	296.0	-3.8	407.3	383.1	-5.9	-99.5	-87.1
Syrian Arab Republic	37.9	131.8	247.8	69.0	37.6	-45.5	-31.1	94.2
Taiwan	47.7	46.5	-2.5	126.6	129.4	2.2	-78.9	-82.9
Turkey	3828.9	3907.9	2.1	2324.9	2946.9	26.8	1504.0	961.0
Ukraine	479.1	835.7	74.4	1253.5	1120.5	-10.6	-774.4	-284.8
United Arab Emirates	307.4	504.8	64.2	106.4	79.6	-25.2	201.0	425.2
United States	725.3	588.8	-18.8	338.2	381.3	12.7	387.1	207.5
Viet-Nam	35.6	34.1	-4.2	61.6	59.2	-3.9	-26.0	-25.1

<sup>1</sup> Partner country:

- In case of exports (or dispatches) is the country (or Member State) of final destination of the goods

- In case of imports (or arrivals) is the country (or Member State) of consignment of the goods.

<sup>2</sup> Data are preliminary as of 10.02.2014.

<sup>3</sup> Non EU excluding Croatia.



**Table 4**

**Exports, imports and trade balance of Bulgaria with non EU countries by sections of SITC, rev.4  
in 2012 and 2013<sup>1</sup>**

Sections by SITC	Exports - FOB			Imports - CIF			Trade balance - FOB/CIF	
	2012	2013	Change compared to the same period of the previous year - %	2012	2013	Change compared to the same period of the previous year - %	2012	2013
	Million BGN			Million BGN			Million BGN	
<b>Third countries<sup>2</sup> -total</b>	<b>16689.1</b>	<b>17280.7</b>	<b>3.5</b>	<b>20534.3</b>	<b>20328.1</b>	<b>-1.0</b>	<b>-3845.2</b>	<b>-3047.4</b>
Food and live animals	932.2	1610.3	72.7	465.5	597.0	28.2	466.7	1013.3
Beverages and tobacco	558.5	585.8	4.9	166.1	191.9	15.5	392.4	393.9
Crude materials, inedible (except fuel)	1875.0	1693.0	-9.7	1710.9	1784.6	4.3	164.1	-91.6
Mineral fuel, lubricants and related materials	5185.9	5045.4	-2.7	10563.1	9837.9	-6.9	-5377.2	-4792.5
Animals and vegetable oils, fats and waxes	68.6	90.8	32.4	67.5	43.9	-35.0	1.1	46.9
Chemical and related products n.e.c.	1752.5	1697.4	-3.1	1319.2	1475.8	11.9	433.3	221.6
Manufactured goods classified chiefly by material	3415.4	3294.1	-3.6	2800.7	3028.6	8.1	614.7	265.5
Machinery and transport equipment	1906.3	2262.0	18.7	2699.4	2516.8	-6.8	-793.1	-254.8
Miscellaneous manufactured articles	928.6	942.9	1.5	726.0	824.9	13.6	202.6	118.0
Commodities and transactions n.e.c.	66.1	59.0	-10.7	15.9	26.7	67.9	50.2	32.3

<sup>1</sup> Data are preliminary as of 10.02.2014.

<sup>2</sup> Non EU excluding Croatia.