

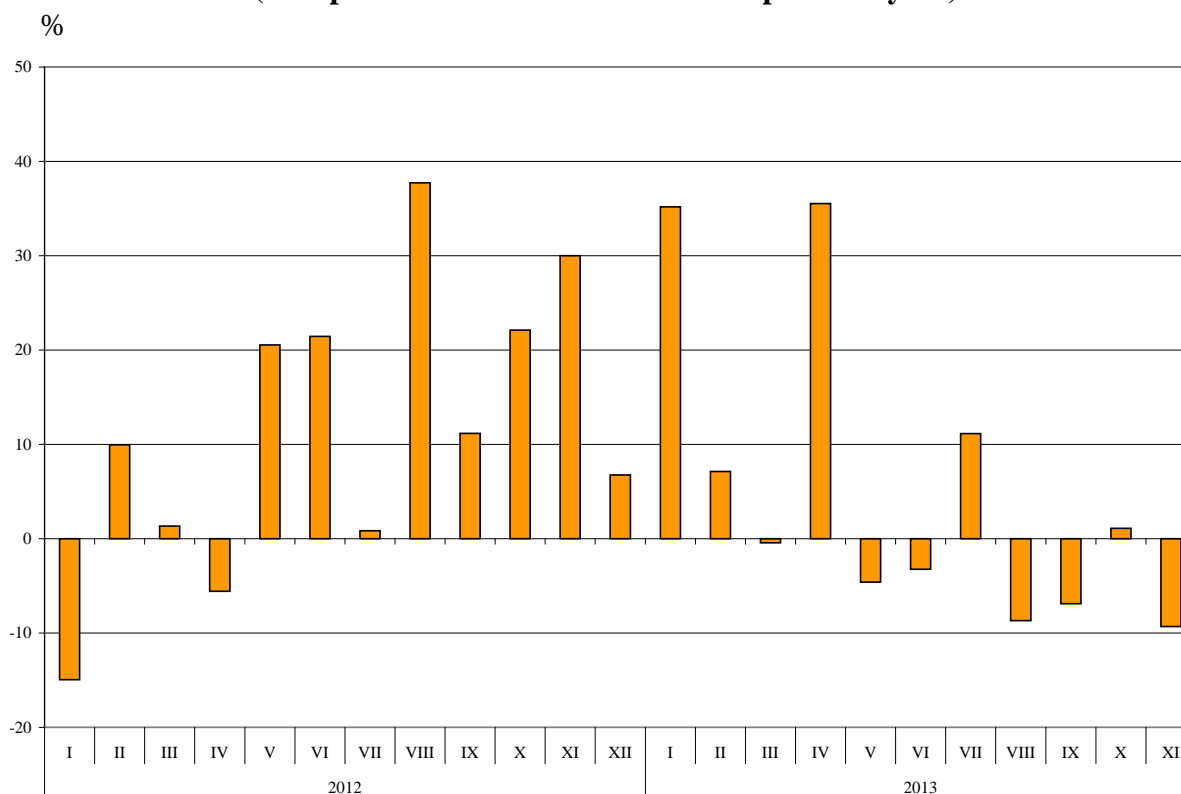


## BULGARIAN TRADE WITH THIRD COUNTRIES FOR THE PERIOD JANUARY - NOVEMBER 2013 (PRELIMINARY DATA)

In the period **January - November 2013** the Bulgarian **exports to third countries** increased by 3.6% compared to the corresponding period of 2012 and amounted to 15.9 Billion BGN (Annex, Table 1 and 2). Main trade partners of Bulgaria were Turkey, China, Russian Federation, Gibraltar, Ukraine and Serbia which accounted for 50.5% of the exports to non EU countries (Annex, Table 3).

**In November 2013** the exports to third countries decreased by 9.3% compared to the corresponding month of the previous year and amounted to 1.4 Billion BGN.

**Figure 1. Nominal value<sup>1</sup> change of exports of Bulgaria to non EU countries  
for the period 2012 - 2013  
(Compared to the same month of the previous year)**



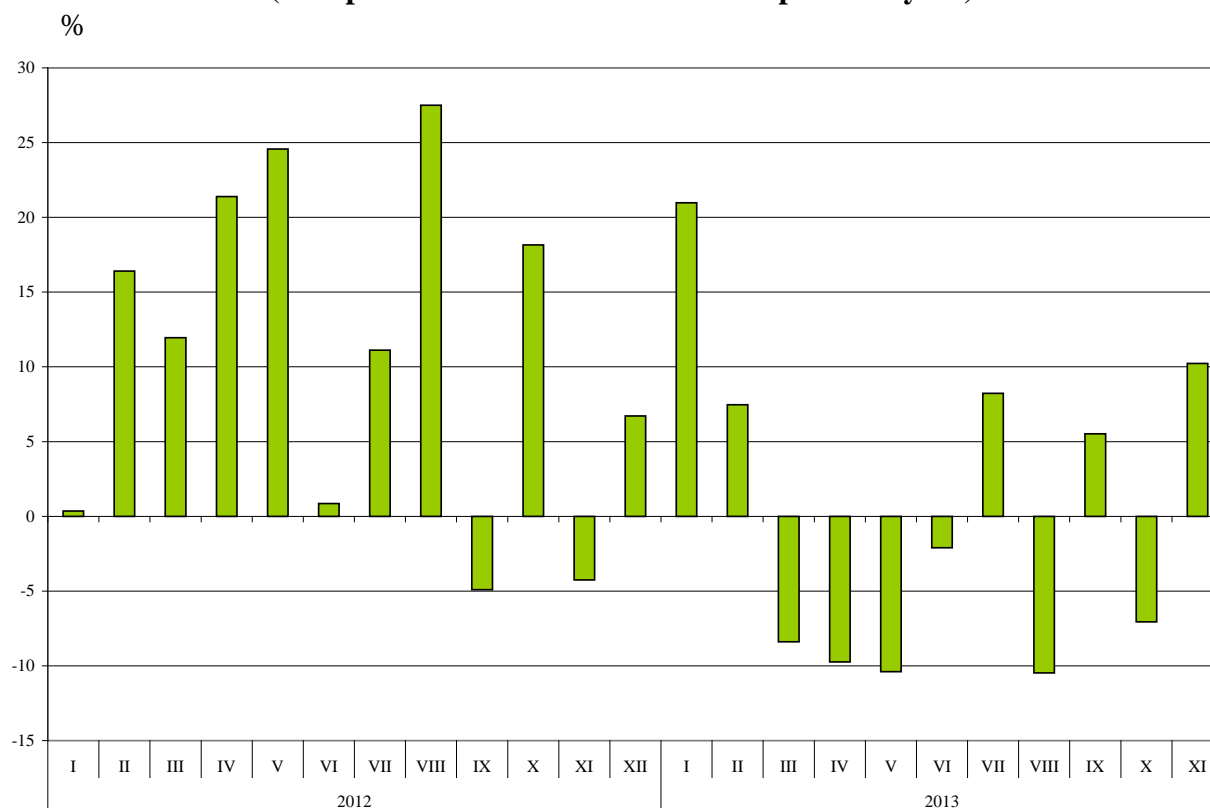
**Bulgarian imports from third countries in the first eleven months of 2013** decreased by 0.6% compared to the corresponding period of 2012 and added up to 18.8 Billion BGN (at CIF prices) (Annex, Tables 1 and 2). The largest amounts were reported for the goods imported from Russian Federation, Turkey, China and Ukraine (Annex, Table 3).

**In November 2013** the Bulgarian imports from third countries increased by 10.2% compared to the corresponding month of the previous year and amounted to 1.8 Billion BGN.

<sup>1</sup> Value changes at current prices.



**Figure 2. Nominal value<sup>1</sup> change of imports of Bulgaria to non EU countries for the period 2012 - 2013 (Compared to the same month of the previous year)**



**The foreign trade balance** of Bulgaria (export FOB - import CIF) **with third countries** in the period January - November 2013 was negative and added up to 2 896.1 Million BGN (Annex, Table 1). The trade balance at FOB/FOB prices (after elimination of transport and insurance costs on imports) was also negative and amounted to 1 886.7 Million BGN.

**In November 2013** the foreign trade balance of Bulgaria (export FOB - import CIF) with third countries was negative and amounted to 361.5 Million BGN.

In the first eleven months of 2013 compared to the corresponding period of 2012 largest growths in the exports of Bulgaria to third countries distributed according to the **Standard International Trade Classification** were recorded in the sections “Food and live animals” (75.9%) (Annex, Table 4). The most notable fall was reported in section “Crude materials, inedible (except fuels)”<sup>2</sup> (11.3%).

In imports from third countries the largest growth was reported in section “Food and live animals” (28.4%) while the most notable fall was observed in section “Animals and vegetable oils, fats and waxes” (36.3%).

<sup>1</sup> Value changes at current prices.

<sup>2</sup> The section includes following divisions: raw hides, skins and furskins; oil-seeds and oleaginous fruits; crude rubber; cork and wood; pulp and waste paper; textile fibres and their wastes; crude fertilizers and crude minerals; metalliferous ores and metal scrap; crude animal and vegetable materials, n.e.s.

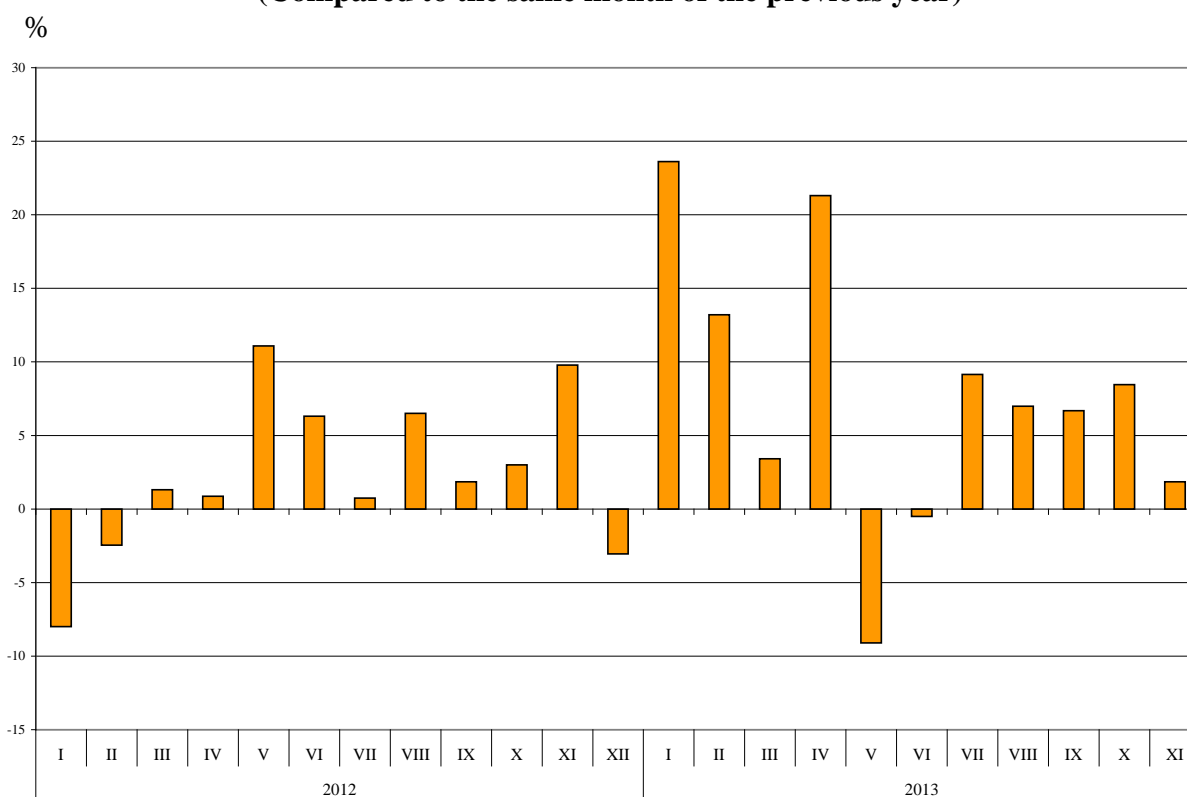


## Bulgarian trade with third countries and EU - total

**In the period January - November 2013** the value of **all exported goods** from Bulgaria amounted to 40.3 Billion BGN and compared to the corresponding period of the previous year the exports increased by 7.1% (Annex, Table 1 and 2).

**In November 2013** the total exports added up to 3.9 Billion BGN and increased by 1.8% compared to the corresponding month of the previous year.

**Figure 3. Nominal value<sup>1</sup> change of exports of Bulgaria for the period 2012 - 2013  
(Compared to the same month of the previous year)**



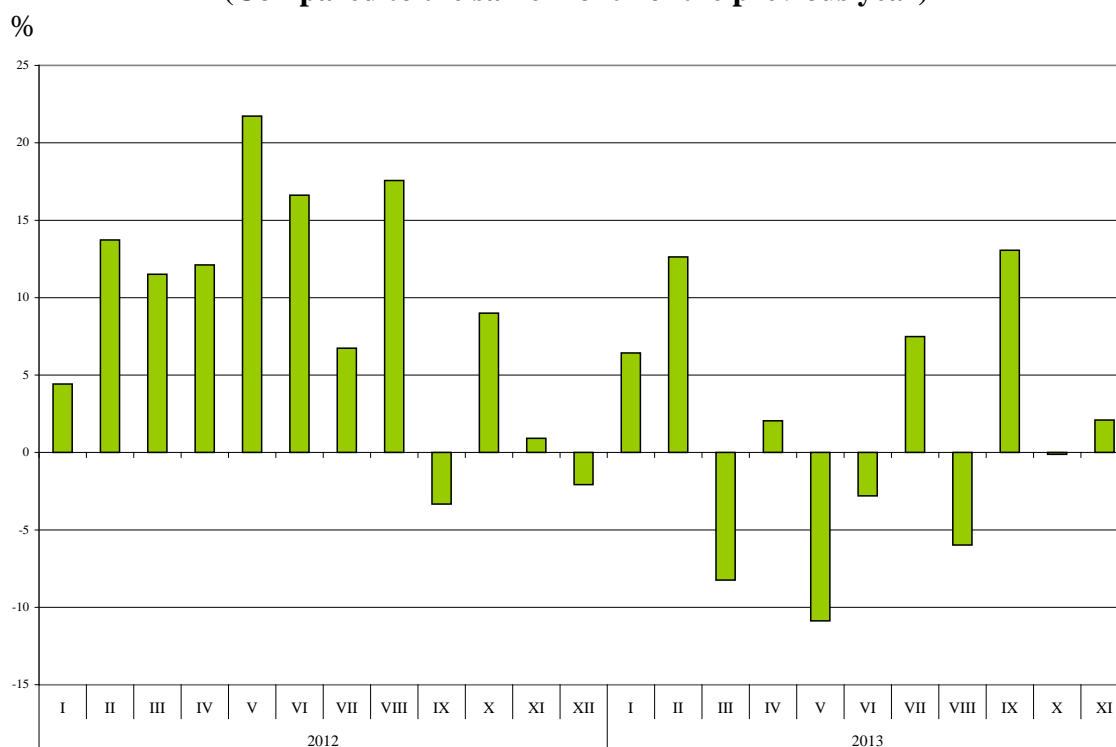
The total value of **all the goods imported** in the country in the period **January - November 2013** amounted to 46.5 Billion BGN (at CIF prices), or by 1.1% more than the corresponding period of the previous year (Annex, Table 1 and 2).

**In November 2013** the total imports increased by 2.1% compared to the corresponding month of the previous year and added up to 4.4 Billion BGN.

<sup>1</sup> Value changes at current prices.



**Figure 4. Nominal value<sup>1</sup> change of imports of Bulgaria for the period 2012 - 2013  
(Compared to the same month of the previous year)**



The **total foreign trade balance** (exports FOB - import CIF) was negative in the period January - November 2013 and amounted to 6 160.9 Million BGN which was 2 202.9 Million BGN less than the balance in the first eleven months of 2012 (Annex, Table 1 and 2). At FOB/FOB prices (after elimination of transport and insurance costs on imports) in the period January - November 2013 the total foreign trade balance was also negative and amounted to 3 870.8 Million BGN.

In November 2013 the total foreign trade balance (exports FOB - import CIF) was negative and added up to 558.1 Million BGN. The trade balance at FOB/FOB prices was also negative and amounted to 329.4 Million BGN.

<sup>1</sup> Value changes at current prices.

Exports, imports and trade balance of Bulgaria for the period January - November 2012 and 2013<sup>1</sup> by months

Table 1

(Million BGN)

Months/Periods	Exports - FOB			Imports - CIF			Imports - FOB <sup>2</sup>			Trade balance - FOB/CIF			Trade balance - FOB/FOB <sup>2</sup>		
	Total	EU <sup>3</sup>	Non EU <sup>4</sup>	Total	EU <sup>3</sup>	Non EU <sup>4</sup>	Total	EU <sup>3</sup>	Non EU <sup>4</sup>	Total	EU <sup>3</sup>	Non EU <sup>4</sup>	Total	EU <sup>3</sup>	Non EU <sup>4</sup>
I.2012	2810.3	1733.9	1076.4	3501.3	2130.3	1371.0	3330.7	2029.9	1300.8	-691.0	-396.4	-294.6	-520.4	-296.0	-224.4
II.2012	2862.9	1659.7	1203.2	3603.3	2125.2	1478.1	3433.5	2032.3	1401.2	-740.4	-465.5	-274.9	-570.6	-372.6	-198.0
III.2012	3363.6	2053.3	1310.3	4207.2	2540.7	1666.5	4008.0	2426.2	1581.8	-843.6	-487.4	-356.2	-644.4	-372.9	-271.5
<b>I - III.2012</b>	<b>9036.8</b>	<b>5446.9</b>	<b>3589.9</b>	<b>11311.8</b>	<b>6796.2</b>	<b>4515.6</b>	<b>10772.2</b>	<b>6488.4</b>	<b>4283.8</b>	<b>-2275.0</b>	<b>-1349.3</b>	<b>-925.7</b>	<b>-1735.4</b>	<b>-1041.5</b>	<b>-693.9</b>
IV.2012	3171.8	1950.5	1221.3	4277.3	2348.4	1928.9	4068.0	2245.9	1822.1	-1105.5	-397.9	-707.6	-896.2	-295.4	-600.8
V.2012	3647.7	2149.9	1497.8	4646.8	2679.1	1967.7	4420.4	2556.6	1863.8	-999.1	-529.2	-469.9	-772.7	-406.7	-366.0
VI.2012	3462.2	2017.5	1444.7	4372.3	2643.4	1728.9	4158.3	2517.6	1640.7	-910.1	-625.9	-284.2	-696.1	-500.1	-196.0
<b>IV - VI.2012</b>	<b>10281.7</b>	<b>6117.9</b>	<b>4163.8</b>	<b>13296.4</b>	<b>7670.9</b>	<b>5625.5</b>	<b>12646.7</b>	<b>7320.1</b>	<b>5326.6</b>	<b>-3014.7</b>	<b>-1553.0</b>	<b>-1461.7</b>	<b>-2365.0</b>	<b>-1202.2</b>	<b>-1162.8</b>
<b>I - VI.2012</b>	<b>19318.5</b>	<b>11564.8</b>	<b>7753.7</b>	<b>24608.2</b>	<b>14467.1</b>	<b>10141.1</b>	<b>23418.9</b>	<b>13808.5</b>	<b>9610.4</b>	<b>-5289.7</b>	<b>-2902.3</b>	<b>-2387.4</b>	<b>-4100.4</b>	<b>-2243.7</b>	<b>-1856.7</b>
VII.2012	3645.9	2251.4	1394.5	4341.6	2657.5	1684.1	4134.1	2536.4	1597.7	-695.7	-406.1	-289.6	-488.2	-285.0	-203.2
VIII.2012	3658.4	1979.5	1678.9	4115.4	2232.0	1883.4	3913.7	2134.6	1779.1	-457.0	-252.5	-204.5	-255.3	-155.1	-100.2
IX.2012	3549.9	2120.9	1429.0	4033.4	2351.8	1681.6	3836.8	2248.9	1587.9	-483.5	-230.9	-252.6	-286.9	-128.0	-158.9
<b>VII - IX.2012</b>	<b>10854.2</b>	<b>6351.8</b>	<b>4502.4</b>	<b>12490.4</b>	<b>7241.3</b>	<b>5249.1</b>	<b>11884.6</b>	<b>6919.9</b>	<b>4964.7</b>	<b>-1636.2</b>	<b>-889.5</b>	<b>-746.7</b>	<b>-1030.4</b>	<b>-568.1</b>	<b>-462.3</b>
<b>I - IX.2012</b>	<b>30172.7</b>	<b>17916.6</b>	<b>12256.1</b>	<b>37098.6</b>	<b>21708.4</b>	<b>15390.2</b>	<b>35303.5</b>	<b>20728.4</b>	<b>14575.1</b>	<b>-6925.9</b>	<b>-3791.8</b>	<b>-3134.1</b>	<b>-5130.8</b>	<b>-2811.8</b>	<b>-2319.0</b>
X.2012	3637.5	2106.5	1531.0	4537.8	2630.0	1907.8	4316.2	2514.0	1802.2	-900.3	-523.5	-376.8	-678.7	-407.5	-271.2
XI.2012	3802.9	2230.6	1572.3	4340.5	2718.9	1621.6	4131.3	2594.9	1536.4	-537.6	-488.3	-49.3	-328.4	-364.3	35.9
<b>I - XI.2012</b>	<b>37613.1</b>	<b>22253.7</b>	<b>15359.4</b>	<b>45976.9</b>	<b>27057.3</b>	<b>18919.6</b>	<b>43751.0</b>	<b>25837.3</b>	<b>17913.7</b>	<b>-8363.8</b>	<b>-4803.6</b>	<b>-3560.2</b>	<b>-6137.9</b>	<b>-3583.6</b>	<b>-2554.3</b>
I.2013	3474.0	2018.8	1455.2	3726.2	2067.6	1658.6	3540.1	1974.3	1565.8	-252.2	-48.8	-203.4	-66.1	44.5	-110.6
II.2013	3241.1	1952.2	1288.9	4058.6	2470.1	1588.5	3852.3	2350.6	1501.7	-817.5	-517.9	-299.6	-611.2	-398.4	-212.8
III.2013	3478.4	2173.7	1304.7	3860.3	2333.6	1526.7	3681.2	2232.5	1448.7	-381.9	-159.9	-222.0	-202.8	-58.8	-144.0
<b>I-III.2013</b>	<b>10193.5</b>	<b>6144.7</b>	<b>4048.8</b>	<b>11645.1</b>	<b>6871.3</b>	<b>4773.8</b>	<b>11073.6</b>	<b>6557.4</b>	<b>4516.2</b>	<b>-1451.6</b>	<b>-726.6</b>	<b>-725.0</b>	<b>-880.1</b>	<b>-412.7</b>	<b>-467.4</b>
IV.2013	3847.7	2192.4	1655.3	4365.0	2623.9	1741.1	4159.1	2502.3	1656.8	-517.3	-431.5	-85.8	-311.4	-309.9	-1.5
V.2013	3315.6	1886.7	1428.9	4141.1	2377.9	1763.2	3942.0	2272.0	1670.0	-825.5	-491.2	-334.3	-626.4	-385.3	-241.1
VI.2013	3444.6	2046.7	1397.9	4249.7	2557.1	1692.6	4043.8	2440.8	1603.0	-805.1	-510.4	-294.7	-599.2	-394.1	-205.1
<b>IV - VI.2013</b>	<b>10607.9</b>	<b>6125.8</b>	<b>4482.1</b>	<b>12755.8</b>	<b>7558.9</b>	<b>5196.9</b>	<b>12144.9</b>	<b>7215.1</b>	<b>4929.8</b>	<b>-2147.9</b>	<b>-1433.1</b>	<b>-714.8</b>	<b>-1537.0</b>	<b>-1089.3</b>	<b>-447.7</b>
<b>I - VI.2013</b>	<b>20801.4</b>	<b>12270.5</b>	<b>8530.9</b>	<b>24400.9</b>	<b>14430.2</b>	<b>9970.7</b>	<b>23218.5</b>	<b>13772.5</b>	<b>9446.0</b>	<b>-3599.5</b>	<b>-2159.7</b>	<b>-1439.8</b>	<b>-2417.1</b>	<b>-1502.0</b>	<b>-915.1</b>
VII.2013	3979.6	2429.7	1549.9	4666.4	2843.7	1822.7	4435.2	2711.5	1723.7	-686.8	-414.0	-272.8	-455.6	-281.8	-173.8
VIII.2013	3913.9	2380.7	1533.2	3869.6	2183.5	1686.1	3678.1	2085.2	1592.9	44.3	197.2	-152.9	235.8	295.5	-59.7
IX.2013	3787.3	2456.7	1330.6	4560.4	2785.9	1774.5	4332.6	2655.4	1677.2	-773.1	-329.2	-443.9	-545.3	-198.7	-346.6
<b>VII - IX.2013</b>	<b>11680.8</b>	<b>7267.1</b>	<b>4413.7</b>	<b>13096.4</b>	<b>7813.1</b>	<b>5283.3</b>	<b>12445.9</b>	<b>7452.1</b>	<b>4993.8</b>	<b>-1415.6</b>	<b>-546.0</b>	<b>-869.6</b>	<b>-765.1</b>	<b>-185.0</b>	<b>-580.1</b>
<b>I - IX.2013</b>	<b>32482.2</b>	<b>19537.6</b>	<b>12944.6</b>	<b>37497.3</b>	<b>22243.3</b>	<b>15254.0</b>	<b>35664.4</b>	<b>21224.6</b>	<b>14439.8</b>	<b>-5015.1</b>	<b>-2705.7</b>	<b>-2309.4</b>	<b>-3182.2</b>	<b>-1687.0</b>	<b>-1495.2</b>
X.2013	3944.9	2396.9	1548.0	4532.6	2759.4	1773.2	4304.1	2629.6	1674.5	-587.7	-362.5	-225.2	-359.2	-232.7	-126.5
XI.2013	3873.2	2447.2	1426.0	4431.3	2643.8	1787.5	4202.6	2511.6	1691.0	-558.1	-196.6	-361.5	-329.4	-64.4	-265.0
<b>I - XI.2013</b>	<b>40300.3</b>	<b>24381.7</b>	<b>15918.6</b>	<b>46461.2</b>	<b>27646.5</b>	<b>18814.7</b>	<b>44171.1</b>	<b>26365.8</b>	<b>17805.3</b>	<b>-6160.9</b>	<b>-3264.8</b>	<b>-2896.1</b>	<b>-3870.8</b>	<b>-1984.1</b>	<b>-1886.7</b>

<sup>1</sup> Data are preliminary as of 09.01.2014.

<sup>2</sup> By data of BNB for the transport costs.

<sup>3</sup> EU including Croatia also for the periods prior 1<sup>st</sup> of July 2013.

<sup>4</sup> Non EU excluding Croatia also for the periods prior 1<sup>st</sup> of July 2013.



Table 2

Value changes of exports and imports of Bulgaria for the period January - November 2013<sup>1</sup> compared to the same period of the previous year

(Per cent)

Months/Periods	Exports - FOB			Imports - CIF			Imports - FOB		
	Total	EU <sup>2</sup>	Non EU <sup>3</sup>	Total	EU <sup>2</sup>	Non EU <sup>3</sup>	Total	EU <sup>2</sup>	Non EU <sup>3</sup>
I	23.6	16.4	35.2	6.4	-2.9	21.0	6.3	-2.7	20.4
II	13.2	17.6	7.1	12.6	16.2	7.5	12.2	15.7	7.2
III	3.4	5.9	-0.4	-8.2	-8.2	-8.4	-8.2	-8.0	-8.4
<b>I - III</b>	<b>12.8</b>	<b>12.8</b>	<b>12.8</b>	<b>2.9</b>	<b>1.1</b>	<b>5.7</b>	<b>2.8</b>	<b>1.1</b>	<b>5.4</b>
IV	21.3	12.4	35.5	2.1	11.7	-9.7	2.2	11.4	-9.1
V	-9.1	-12.2	-4.6	-10.9	-11.2	-10.4	-10.8	-11.1	-10.4
VI	-0.5	1.4	-3.2	-2.8	-3.3	-2.1	-2.8	-3.1	-2.3
<b>IV - VI</b>	<b>3.2</b>	<b>0.1</b>	<b>7.6</b>	<b>-4.1</b>	<b>-1.5</b>	<b>-7.6</b>	<b>-4.0</b>	<b>-1.4</b>	<b>-7.4</b>
<b>I - VI</b>	<b>7.7</b>	<b>6.1</b>	<b>10.0</b>	<b>-0.8</b>	<b>-0.3</b>	<b>-1.7</b>	<b>-0.9</b>	<b>-0.3</b>	<b>-1.7</b>
VII	9.2	7.9	11.1	7.5	7.0	8.2	7.3	6.9	7.9
VIII	7.0	20.3	-8.7	-6.0	-2.2	-10.5	-6.0	-2.3	-10.5
IX	6.7	15.8	-6.9	13.1	18.5	5.5	12.9	18.1	5.6
<b>VII - IX</b>	<b>7.6</b>	<b>14.4</b>	<b>-2.0</b>	<b>4.9</b>	<b>7.9</b>	<b>0.7</b>	<b>4.7</b>	<b>7.7</b>	<b>0.6</b>
<b>I - IX</b>	<b>7.7</b>	<b>9.0</b>	<b>5.6</b>	<b>1.1</b>	<b>2.5</b>	<b>-0.9</b>	<b>1.0</b>	<b>2.4</b>	<b>-0.9</b>
X	8.5	13.8	1.1	-0.1	4.9	-7.1	-0.3	4.6	-7.1
XI	1.8	9.7	-9.3	2.1	-2.8	10.2	1.7	-3.2	10.1
<b>I - XI</b>	<b>7.1</b>	<b>9.6</b>	<b>3.6</b>	<b>1.1</b>	<b>2.2</b>	<b>-0.6</b>	<b>1.0</b>	<b>2.0</b>	<b>-0.6</b>

<sup>1</sup> Data are preliminary as of 09.01.2014.

<sup>2</sup> EU including Croatia also for the periods prior 1<sup>st</sup> of July 2013.

<sup>3</sup> Non EU excluding Croatia also for the periods prior 1<sup>st</sup> of July 2013.



Table 3

Exports, imports and trade balance of Bulgaria with main non EU partner countries<sup>1</sup> for the period  
January - November 2012 and 2013<sup>2</sup>

Countries	Exports - FOB			Imports - CIF			Trade balance - FOB/CIF	
	2012	2013	Change compared to the same period of the previous year - %	2012	2013	Change compared to the same period of the previous year - %	2012	2013
	Million BGN			Million BGN			Million BGN	
<b>Third countries<sup>3</sup>-total</b>	<b>15359.4</b>	<b>15918.6</b>	<b>3.6</b>	<b>18919.6</b>	<b>18814.7</b>	<b>-0.6</b>	<b>-3560.2</b>	<b>-2896.1</b>
of which:								
Albania	88.9	110.7	24.5	34.4	31.3	-9.0	54.5	79.4
Bosnia and Herzegovina	63.8	70.7	10.8	28.5	47.3	66.0	35.3	23.4
Brazil	65.6	25.1	-61.7	220.1	96.1	-56.3	-154.5	-71.0
Canada	202.5	139.2	-31.3	66.5	29.6	-55.5	136.0	109.6
China	1079.1	1137.3	5.4	1399.1	1377.4	-1.6	-320.0	-240.1
Egypt	242.7	337.0	38.9	102.3	104.9	2.5	140.4	232.1
Former Yugoslav Republic of Macedonia	714.4	624.2	-12.6	457.1	495.0	8.3	257.3	129.2
Georgia	516.8	329.1	-36.3	309.4	400.0	29.3	207.4	-70.9
Gibraltar	1290.6	786.9	-39.0	0.0	0.3	0.0	1290.6	786.6
India	61.8	53.7	-13.1	137.5	221.7	61.2	-75.7	-168.0
Indonesia	33.4	48.3	44.6	46.2	51.1	10.6	-12.8	-2.8
Iran, Islamic Republic of	33.0	43.2	30.9	8.2	3.1	-62.2	24.8	40.1
Israel	158.5	169.1	6.7	107.9	85.3	-20.9	50.6	83.8
Japan	44.9	50.5	12.5	116.1	118.9	2.4	-71.2	-68.4
Kazakhstan	55.6	59.6	7.2	69.4	84.2	21.3	-13.8	-24.6
Korea, Republic of	226.5	190.9	-15.7	171.4	156.9	-8.5	55.1	34.0
Namibia	364.9	247.6	-32.1	0.0	0.4	0.0	364.9	247.2
Norway	56.1	63.9	13.9	13.7	28.7	109.5	42.4	35.2
Peru	4.9	12.3	151.0	162.5	16.4	-89.9	-157.6	-4.1
Russian Federation	1040.9	1049.7	0.8	9471.0	8641.9	-8.8	-8430.1	-7592.2
Serbia	819.5	671.3	-18.1	461.2	461.7	0.1	358.3	209.6
Singapore	92.8	541.6	483.6	26.3	23.8	-9.5	66.5	517.8
South Africa	179.2	285.0	59.0	62.1	45.7	-26.4	117.1	239.3
Switzerland	289.8	278.7	-3.8	371.3	357.5	-3.7	-81.5	-78.8
Syrian Arab Republic	37.1	111.2	199.7	67.5	32.1	-52.4	-30.4	79.1
Taiwan	46.2	42.9	-7.1	118.4	120.1	1.4	-72.2	-77.2
Turkey	3562.5	3614.5	1.5	2148.7	2740.3	27.5	1413.8	874.2
Ukraine	445.1	784.5	76.3	1167.4	1013.1	-13.2	-722.3	-228.6
United Arab Emirates	249.1	364.9	46.5	99.7	75.3	-24.5	149.4	289.6
United States	635.4	540.3	-15.0	311.2	348.8	12.1	324.2	191.5
Viet-Nam	33.7	28.2	-16.3	59.0	54.5	-7.6	-25.3	-26.3

<sup>1</sup> Partner country:

- In case of exports (or dispatches) is the country (or Member State) of final destination of the goods

- In case of imports (or arrivals) is the country (or Member State) of consignment of the goods.

<sup>2</sup> Data are preliminary as of 09.01.2014.

<sup>3</sup> Non EU excluding Croatia.



**Table 4**

**Exports, imports and trade balance of Bulgaria with non EU countries by sections of SITC, rev.4 for the period  
January - November 2012 and 2013<sup>1</sup>**

Sections by SITC	Exports - FOB			Imports - CIF			Trade balance - FOB/CIF	
	2012	2013	Change compared to the same period of the previous year - %	2012	2013	Change compared to the same period of the previous year - %	2012	2013
	Million BGN			Million BGN			Million BGN	
<b>Third countries<sup>2</sup> -total</b>	<b>15359.4</b>	<b>15918.6</b>	<b>3.6</b>	<b>18919.6</b>	<b>18814.7</b>	<b>-0.6</b>	<b>-3560.2</b>	<b>-2896.1</b>
Food and live animals	848.6	1492.8	75.9	429.3	551.3	28.4	419.3	941.5
Beverages and tobacco	513.2	532.7	3.8	155.0	171.8	10.8	358.2	360.9
Crude materials, inedible (except fuel)	1770.2	1569.6	-11.3	1598.1	1675.6	4.8	172.1	-106.0
Mineral fuel, lubricants and related materials	4745.0	4675.5	-1.5	9645.1	9102.9	-5.6	-4900.1	-4427.4
Animals and vegetable oils, fats and waxes	63.8	77.4	21.3	63.3	40.3	-36.3	0.5	37.1
Chemical and related products n.e.c.	1639.5	1558.7	-4.9	1227.5	1365.6	11.3	412.0	193.1
Manufactured goods classified chiefly by material	3169.7	3015.9	-4.9	2609.4	2801.0	7.3	560.3	214.9
Machinery and transport equipment	1709.1	2073.2	21.3	2506.1	2325.2	-7.2	-797.0	-252.0
Miscellaneous manufactured articles	839.7	867.5	3.3	670.8	756.5	12.8	168.9	111.0
Commodities and transactions n.e.c.	60.6	55.3	-8.7	15.0	24.5	63.3	45.6	30.8

<sup>1</sup> Data are preliminary as of 09.01.2014.

<sup>2</sup> Non EU excluding Croatia.