

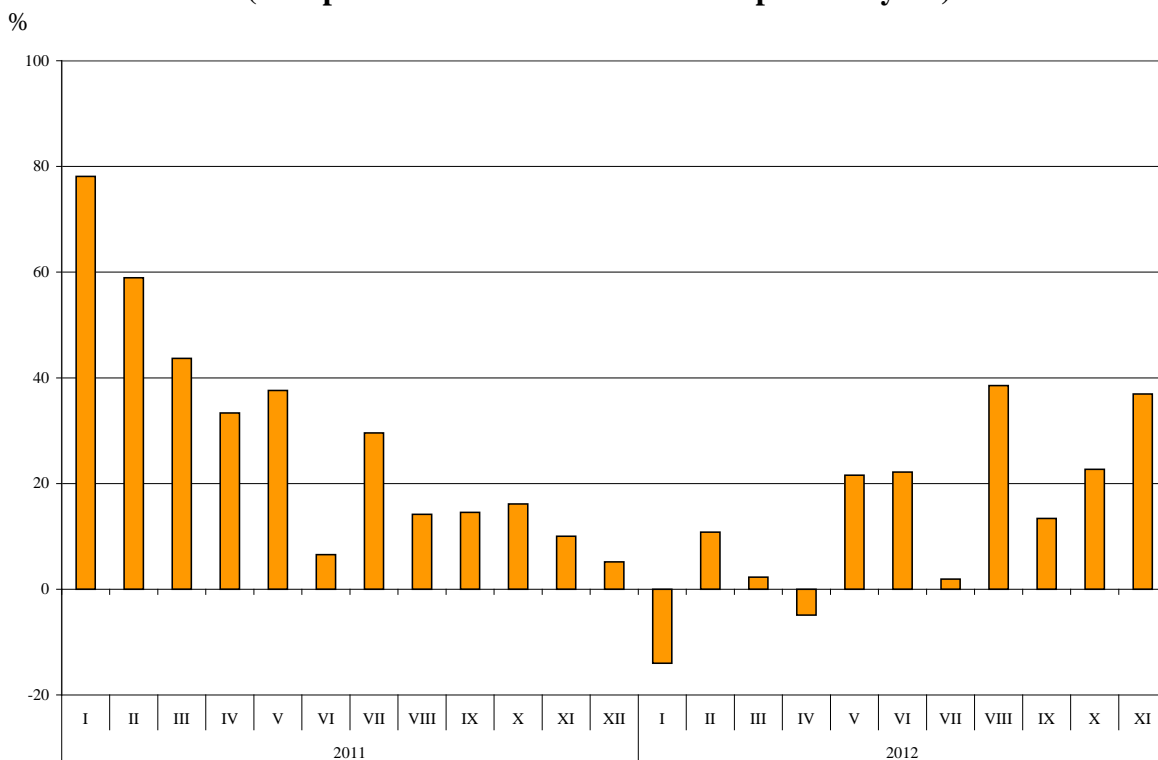


BULGARIAN TRADE WITH THIRD COUNTRIES FOR THE PERIOD JANUARY - NOVEMBER 2012 (PRELIMINARY DATA)

In the period **January - November 2012** the Bulgarian **exports to third countries** increased by 13.4% compared to the corresponding period of the previous year and amounted to 15.6 Billion Levs (Annex, Table 1 and 2). The main trade partners of Bulgaria were Turkey, China, Russia, Serbia, The FYR of Macedonia and USA that formed 50.4% of the exports to non EU countries (Annex, Table 3).

In November 2012 the exports to third countries increased by 37.0% compared to the corresponding month of the previous year and reached 1.7 Billion Levs.

**Figure 1. Nominal value¹ change of exports to non EU countries
for the period 2011 – 2012
(Compared to the same month of the previous year)**



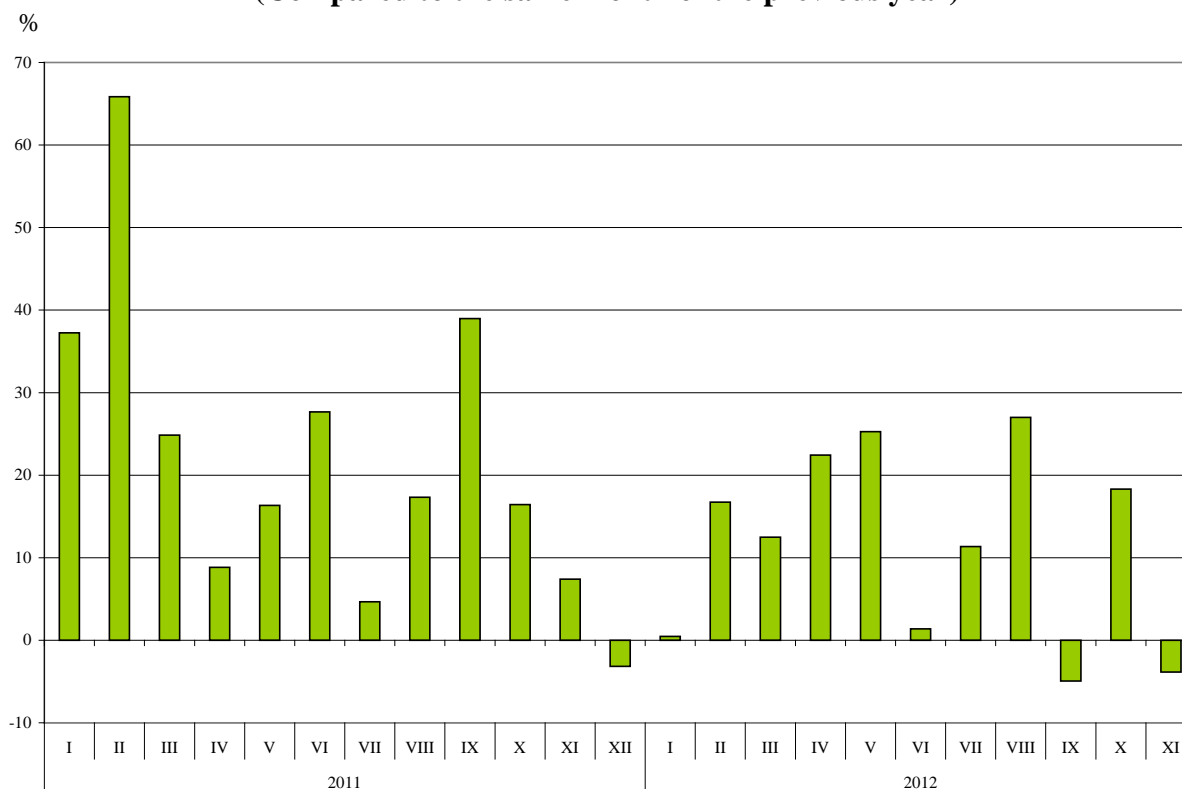
Bulgarian imports from third countries in the first eleven months of 2012 increased by 11.1% compared to the corresponding period of the previous year and added up to 19.0 Billion Levs (at CIF prices) (Annex, Tables 1 and 2). The largest amounts were reported for the goods imported from Russia, Turkey, China and Ukraine (Annex, Table 3).

In November 2012 the Bulgarian imports from third countries decreased by 3.8% compared to the corresponding month of the previous year and amounted to 1.6 Billion Levs.

¹ Value changes at current prices.



**Figure 2. Nominal value¹ change of imports to non EU countries
for the period 2011 – 2012
(Compared to the same month of the previous year)**



The foreign trade balance of Bulgaria (export FOB - import CIF) **with third countries** in the period January - November 2012 was negative and added up to 3 406.0 Million Levs (Annex, Table 1). The trade balance at FOB /FOB prices (after elimination of transport and insurance costs on imports) was also negative and amounted to 2 530.9 Million Levs.

In November 2012 the foreign trade balance of Bulgaria (export FOB - import CIF) with third countries was positive and amounted to 28.1 Million Levs.

In the first eleven months of 2012 compared to the corresponding period of the previous year the largest growths in the **exports** of Bulgaria **to third countries** distributed according to the Standard International Trade Classification (Annex, Table 4) were recorded in the sections “Beverages and tobacco” (25.1%) and “Animal and vegetable oils, fats and waxes”² (23.8%).

In **imports from third countries** the largest growth (57.5%) was reported in section “Animal and vegetable oils, fats and waxes” while the largest decrease (25.0%) was observed in section “Food and live animals”.

¹ Value changes at current prices.

² The section includes the following divisions: animal oils and fats; fixed vegetable fats and oils, crude, refined or fractionated; animal or vegetable fats and oils, processed; waxes of animal or vegetable origin; inedible mixtures or preparations of animal or vegetable fats or oils, n.e.s.

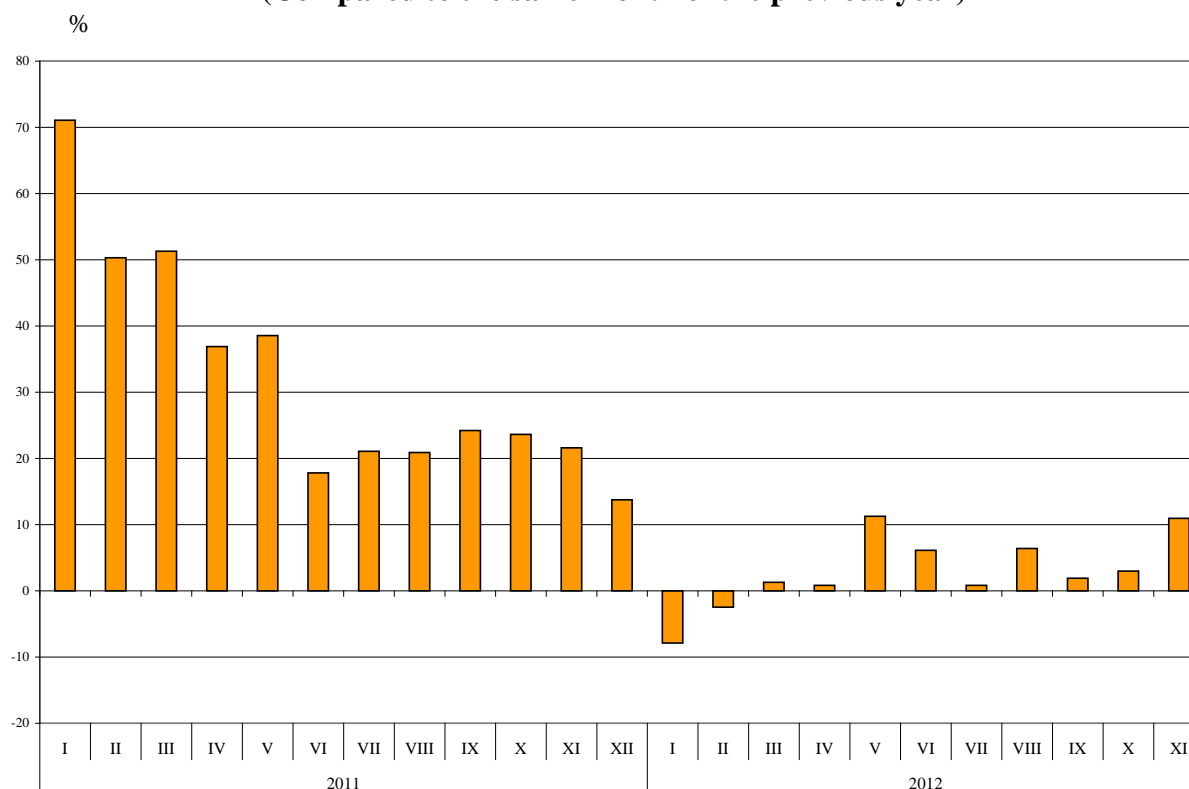


Bulgarian trade with third countries and EU – total

In the first eleven months of 2012 the value of **all exported goods** from Bulgaria amounted to 37.7 Billion Levs and compared to the corresponding period of 2011 the exports increased by 3.1% (Annex, Table 1 and 2).

In November 2012 the total exports added up to 3.8 Billion Levs and grew by 11.0% compared to the corresponding month of the previous year.

**Figure 3. Nominal value¹ change of exports for the period 2011 – 2012
(Compared to the same month of the previous year)**



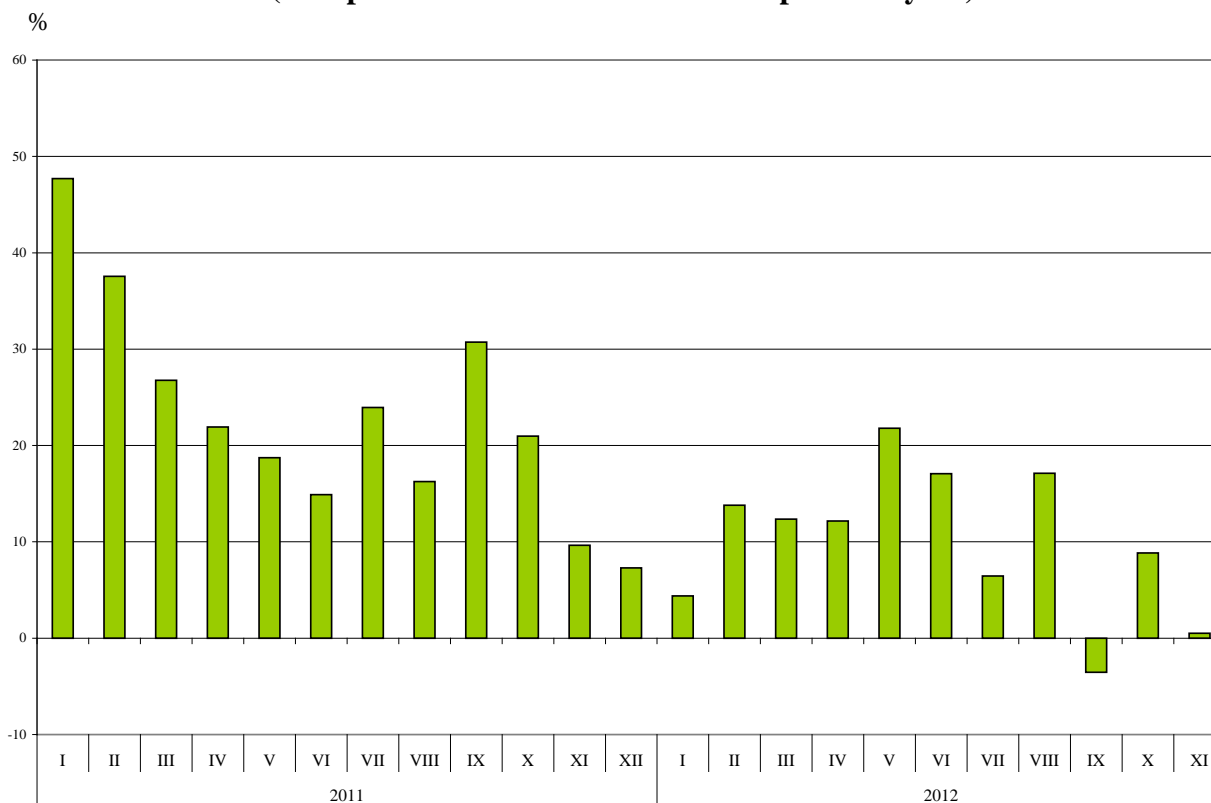
The total value of **all the goods imported** in the country in the period **January - November 2012** amounted to 46.0 Billion Levs (at CIF prices), or by 9.8% more than the corresponding period of the previous year (Annex, Table 1 and 2).

In November 2012 the total imports increased by 0.5% compared to November 2011 and added up to 4.3 Billion Levs.

¹ Value changes at current prices.



**Figure 4. Nominal value¹ change of imports for the period 2011 – 2012
(Compared to the same month of the previous year)**



The **total foreign trade balance** (exports FOB - import CIF) was negative in the period January – November 2012 and amounted to 8 318.9 Million Levs which was 2 967.4 Million Levs more than the balance in the first eleven months of 2011 (Annex, Table 1 and 2). At FOB/FOB prices (after elimination of transport and insurance costs on imports) in the period January – November 2012 the total foreign trade balance was also negative and amounted to 6 356.5 Million Levs.

In November 2012 the total foreign trade balance (exports FOB - import CIF) was negative and added up to 480.1 Million Levs. The trade balance at FOB/FOB prices was also negative and amounted to 270.2 Million Levs.

¹ Value changes at current prices.

Exports, imports and trade balance of Bulgaria for the period January - November 2011 and 2012¹ by months

(Million Levs)

Months/Periods	Exports - FOB			Imports - CIF			Imports - FOB ²			Trade balance - FOB/CIF			Trade balance - FOB/FOB ²		
	Total	EU	Non EU	Total	EU	Non EU	Total	EU	Non EU	Total	EU	Non EU	Total	EU	Non EU
I.2011	3054.5	1789.0	1265.5	3353.1	1987.0	1366.1	3211.1	1907.9	1303.2	-298.6	-198.0	-100.6	-156.6	-118.9	-37.7
II.2011	2935.1	1840.9	1094.2	3168.3	1898.6	1269.7	3041.6	1827.9	1213.7	-233.2	-57.7	-175.5	-106.5	13.0	-119.5
III.2011	3320.2	2027.1	1293.1	3772.8	2284.2	1488.6	3613.6	2193.5	1420.1	-452.6	-257.1	-195.5	-293.4	-166.4	-127.0
I - III.2011	9309.8	5657.0	3652.8	10294.2	6169.8	4124.4	9866.3	5929.3	3937.0	-984.4	-512.8	-471.6	-556.5	-272.3	-284.2
IV.2011	3144.3	1850.8	1293.5	3815.2	2226.2	1589.0	3652.4	2137.7	1514.7	-670.9	-375.4	-295.5	-508.1	-286.9	-221.2
V.2011	3283.6	2041.0	1242.6	3817.6	2238.1	1579.5	3659.2	2153.0	1506.2	-534.0	-197.1	-336.9	-375.6	-112.0	-263.6
VI.2011	3256.6	2067.1	1189.5	3749.3	2035.1	1714.2	3591.2	1958.4	1632.8	-492.7	32.0	-524.7	-334.6	108.7	-443.3
IV - VI.2011	9684.5	5958.9	3725.6	11382.1	6499.4	4882.7	10902.8	6249.1	4653.7	-1697.6	-540.5	-1157.1	-1218.3	-290.2	-928.1
I - VI.2011	18994.3	11615.9	7378.4	21676.3	12669.2	9007.1	20769.1	12178.4	8590.7	-2682.0	-1053.3	-1628.7	-1774.8	-562.5	-1212.3
VII.2011	3618.8	2235.9	1382.9	4067.4	2551.8	1515.6	3893.6	2449.2	1444.4	-448.6	-315.9	-132.7	-274.8	-213.3	-61.5
VIII.2011	3435.1	2216.1	1219.0	3500.4	2023.3	1477.1	3357.6	1945.3	1412.3	-65.3	192.8	-258.1	77.5	270.8	-193.3
IX.2011	3485.3	2199.8	1285.5	4172.6	2404.3	1768.3	3988.7	2307.3	1681.4	-687.3	-204.5	-482.8	-503.4	-107.5	-395.9
VII - IX.2011	10539.2	6651.8	3887.4	11740.4	6979.4	4761.0	11239.9	6701.8	4538.1	-1201.2	-327.6	-873.6	-700.7	-50.0	-650.7
I - IX.2011	29533.5	18267.7	11265.8	33416.7	19648.6	13768.1	32009.0	18880.2	13128.8	-3883.2	-1380.9	-2502.3	-2475.5	-612.5	-1863.0
X.2011	3531.7	2277.9	1253.8	4162.9	2548.3	1614.6	3989.8	2449.4	1540.4	-631.2	-270.4	-360.8	-458.1	-171.5	-286.6
XI.2011	3464.0	2254.5	1209.5	4301.1	2607.5	1693.6	4116.4	2501.4	1615.0	-837.1	-353.0	-484.1	-652.4	-246.9	-405.5
I - XI.2011	36529.2	22800.1	13729.1	41880.7	24804.4	17076.3	40115.2	23831.0	16284.2	-5351.5	-2004.3	-3347.2	-3586.0	-1030.9	-2555.1
I.2012	2813.9	1725.6	1088.3	3500.4	2128.1	1372.3	3355.5	2042.3	1313.2	-686.5	-402.5	-284.0	-541.6	-316.7	-224.9
II.2012	2863.1	1650.5	1212.6	3605.6	2123.5	1482.1	3456.8	2041.8	1415.0	-742.5	-473.0	-269.5	-593.7	-391.3	-202.4
III.2012	3363.2	2040.7	1322.5	4239.1	2564.8	1674.3	4065.2	2464.4	1600.8	-875.9	-524.1	-351.8	-702.0	-423.7	-278.3
I - III.2012	9040.2	5416.8	3623.4	11345.1	6816.4	4528.7	10877.5	6548.5	4329.0	-2304.9	-1399.6	-905.3	-1837.3	-1131.7	-705.6
IV.2012	3170.2	1940.1	1230.1	4279.6	2334.3	1945.3	4098.5	2245.3	1853.2	-1109.4	-394.2	-715.2	-928.3	-305.2	-623.1
V.2012	3653.2	2142.5	1510.7	4649.5	2670.9	1978.6	4452.8	2565.0	1887.8	-996.3	-528.4	-467.9	-799.6	-422.5	-377.1
VI.2012	3455.7	2002.3	1453.4	4389.8	2651.8	1738.0	4204.3	2543.3	1661.0	-934.1	-649.5	-284.6	-748.6	-541.0	-207.6
IV - VI.2012	10279.1	6084.9	4194.2	13318.9	7657.0	5661.9	12755.6	7353.6	5402.0	-3039.8	-1572.1	-1467.7	-2476.5	-1268.7	-1207.8
I - VI.2012	19319.3	11501.7	7817.6	24664.0	14473.4	10190.6	23633.1	13902.1	9731.0	-5344.7	-2971.7	-2373.0	-4313.8	-2400.4	-1913.4
VII.2012	3648.7	2239.3	1409.4	4330.0	2642.3	1687.7	4149.7	2536.3	1613.4	-681.3	-403.0	-278.3	-501.0	-297.0	-204.0
VIII.2012	3655.4	1966.8	1688.6	4099.8	2223.7	1876.1	3924.1	2139.1	1785.0	-444.4	-256.9	-187.5	-268.7	-172.3	-96.4
IX.2012	3551.4	2093.5	1457.9	4024.8	2343.9	1680.9	3852.4	2254.8	1597.6	-473.4	-250.4	-223.0	-301.0	-161.3	-139.7
VII - IX.2012	10855.5	6299.6	4555.9	12454.6	7209.9	5244.7	11926.2	6930.2	4996.0	-1599.1	-910.3	-688.8	-1070.7	-630.6	-440.1
I - IX.2012	30174.8	17801.3	12373.5	37118.6	21683.3	15435.3	35559.3	20832.3	14727.0	-6943.8	-3882.0	-3061.8	-5384.5	-3031.0	-2353.5
X.2012	3636.6	2098.5	1538.1	4531.6	2621.2	1910.4	4338.4	2519.6	1818.8	-895.0	-522.7	-372.3	-701.8	-421.1	-280.7
XI.2012	3843.4	2186.9	1656.5	4323.5	2695.1	1628.4	4113.6	2560.4	1553.2	-480.1	-508.2	28.1	-270.2	-373.5	103.3
I - XI.2012	37654.8	22086.7	15568.1	45973.7	26999.6	18974.1	44011.3	25912.3	18099.0	-8318.9	-4912.9	-3406.0	-6356.5	-3825.6	-2530.9

¹ Data are preliminary as of 09.01.2013.

² By data of BNB for the transport costs.



Table 2

Value changes of exports and imports of Bulgaria for the period January - November 2012¹ compared to the same period of the previous year

(Per cent)

Months/Periods	Exports - FOB			Imports - CIF			Imports - FOB		
	Total	EU	Non EU	Total	EU	Non EU	Total	EU	Non EU
I	-7.9	-3.5	-14.0	4.4	7.1	0.5	4.5	7.0	0.8
II	-2.5	-10.3	10.8	13.8	11.8	16.7	13.7	11.7	16.6
III	1.3	0.7	2.3	12.4	12.3	12.5	12.5	12.4	12.7
I-III	-2.9	-4.2	-0.8	10.2	10.5	9.8	10.2	10.4	10.0
IV	0.8	4.8	-4.9	12.2	4.9	22.4	12.2	5.0	22.3
V	11.3	5.0	21.6	21.8	19.3	25.3	21.7	19.1	25.3
VI	6.1	-3.1	22.2	17.1	30.3	1.4	17.1	29.9	1.7
IV - VI	6.1	2.1	12.6	17.0	17.8	16.0	17.0	17.7	16.1
I - VI	1.7	-1.0	6.0	13.8	14.2	13.1	13.8	14.2	13.3
VII	0.8	0.2	1.9	6.5	3.5	11.4	6.6	3.6	11.7
VIII	6.4	-11.2	38.5	17.1	9.9	27.0	16.9	10.0	26.4
IX	1.9	-4.8	13.4	-3.5	-2.5	-4.9	-3.4	-2.3	-5.0
VII - IX	3.0	-5.3	17.2	6.1	3.3	10.2	6.1	3.4	10.1
I - IX	2.2	-2.6	9.8	11.1	10.4	12.1	11.1	10.3	12.2
X	3.0	-7.9	22.7	8.9	2.9	18.3	8.7	2.9	18.1
XI	11.0	-3.0	37.0	0.5	3.4	-3.8	-0.1	2.4	-3.8
I - XI	3.1	-3.1	13.4	9.8	8.9	11.1	9.7	8.7	11.1

¹Data are preliminary as of 09.01.2013.



Table 3

Exports, imports and trade balance of Bulgaria with main non EU partner countries¹ for the period
January - November 2011 and 2012²

Countries	Exports - FOB			Imports - CIF			Trade balance - FOB/CIF	
	2011	2012	Change compared to the same period of the previous year - %	2011	2012	Change compared to the same period of the previous year - %	2011	2012
	Million Levs			Million Levs			Million Levs	
Third countries -total	13729.1	15568.1	13.4	17076.3	18974.1	11.1	-3347.2	-3406.0
of which:								
Albania	92.0	88.9	-3.4	31.3	34.4	9.9	60.7	54.5
Bosnia and Herzegovina	74.9	63.9	-14.7	13.4	28.5	112.7	61.5	35.4
Brazil	54.5	66.3	21.7	177.2	220.2	24.3	-122.7	-153.9
Canada	141.9	202.5	42.7	59.2	66.1	11.7	82.7	136.4
China	484.1	1079.2	122.9	1186.3	1399.2	17.9	-702.2	-320.0
Croatia	157.5	146.4	-7.0	50.9	53.8	5.7	106.6	92.6
Egypt	319.3	242.7	-24.0	132.7	102.3	-22.9	186.6	140.4
FYR of Macedonia	835.8	714.4	-14.5	452.7	464.7	2.7	383.1	249.7
Georgia	401.8	516.9	28.6	340.9	310.9	-8.8	60.9	206.0
India	120.5	61.8	-48.7	111.6	137.5	23.2	8.9	-75.7
Indonesia	22.0	33.4	51.8	34.7	46.2	33.1	-12.7	-12.8
Iran	106.5	33.0	-69.0	5.1	8.2	60.8	101.4	24.8
Israel	98.3	158.5	61.2	337.3	108.4	-67.9	-239.0	50.1
Japan	42.0	44.9	6.9	125.8	116.4	-7.5	-83.8	-71.5
Kazakhstan	39.2	55.7	42.1	127.1	68.1	-46.4	-87.9	-12.4
Korea, Rep. of	165.7	226.5	36.7	210.7	171.4	-18.7	-45.0	55.1
Norway	57.7	58.9	2.1	18.6	14.7	-21.0	39.1	44.2
Peru	3.9	4.9	25.6	115.8	161.0	39.0	-111.9	-156.1
Russian Fed.	983.6	1040.7	5.8	7354.6	9473.1	28.8	-6371.0	-8432.4
Serbia	870.8	819.5	-5.9	456.2	454.8	-0.3	414.6	364.7
Singapore	74.1	92.8	25.2	27.0	26.3	-2.6	47.1	66.5
South Africa	129.4	179.2	38.5	35.9	62.1	73.0	93.5	117.1
Switzerland	225.5	289.1	28.2	326.0	371.3	13.9	-100.5	-82.2
Syria	55.9	37.1	-33.6	72.1	67.4	-6.5	-16.2	-30.3
Taiwan	39.8	46.2	16.1	104.9	118.4	12.9	-65.1	-72.2
Turkey	3132.3	3558.1	13.6	1995.4	2146.0	7.5	1136.9	1412.1
Ukraine	522.0	446.3	-14.5	1703.8	1166.7	-31.5	-1181.8	-720.4
United Arab Emirates	90.1	249.1	176.5	66.8	99.7	49.3	23.3	149.4
USA	468.9	637.7	36.0	360.4	311.4	-13.6	108.5	326.3
Viet-Nam	20.5	33.7	64.4	32.3	59.0	82.7	-11.8	-25.3

¹ Partner country:

- In case of exports (or dispatches) is the country (or Member State) of final destination of the goods
- In case of imports (or arrivals) is the country (or Member State) of consignment of the goods.

² Data are preliminary as of 09.01.2013.

Table 4

**Exports, imports and trade balance of Bulgaria with non EU countries by sections of SITC, rev.4 for the period
January - November 2011 and 2012¹**

Sections by SITC	Exports - FOB			Imports - CIF			Trade balance - FOB/CIF	
	2011	2012	Change compared to the same period of the previous year - %	2011	2012	Change compared to the same period of the previous year - %	2011	2012
	Million Levs			Million Levs			Million Levs	
Third countries -total	13729.1	15568.1	13.4	17076.3	18974.1	11.1	-3347.2	-3406.0
Food and live animals	815.5	866.6	6.3	576.4	432.1	-25.0	239.1	434.5
Beverages and tobacco	412.9	516.7	25.1	139.6	157.1	12.5	273.3	359.6
Crude materials, inedible (except fuel)	1466.5	1769.3	20.6	1485.3	1602.6	7.9	-18.8	166.7
Mineral fuel, lubricants and related materials	3857.0	4774.5	23.8	8441.3	9645.2	14.3	-4584.3	-4870.7
Animals and vegetable oils, fats and waxes	63.2	66.0	4.4	40.2	63.3	57.5	23.0	2.7
Chemical and related products n.e.c.	1562.3	1656.1	6.0	1060.2	1244.3	17.4	502.1	411.8
Manufactured goods classified chiefly by material	3050.4	3222.6	5.6	2640.8	2622.2	-0.7	409.6	600.4
Machinery and transport equipment	1630.3	1784.4	9.5	2043.7	2519.1	23.3	-413.4	-734.7
Miscellaneous manufactured articles	841.3	851.1	1.2	616.6	673.2	9.2	224.7	177.9
Commodities and transactions n.e.c.	29.7	60.8	104.7	32.2	15.0	-53.4	-2.5	45.8

¹ Data are preliminary as of 09.01.2013.