

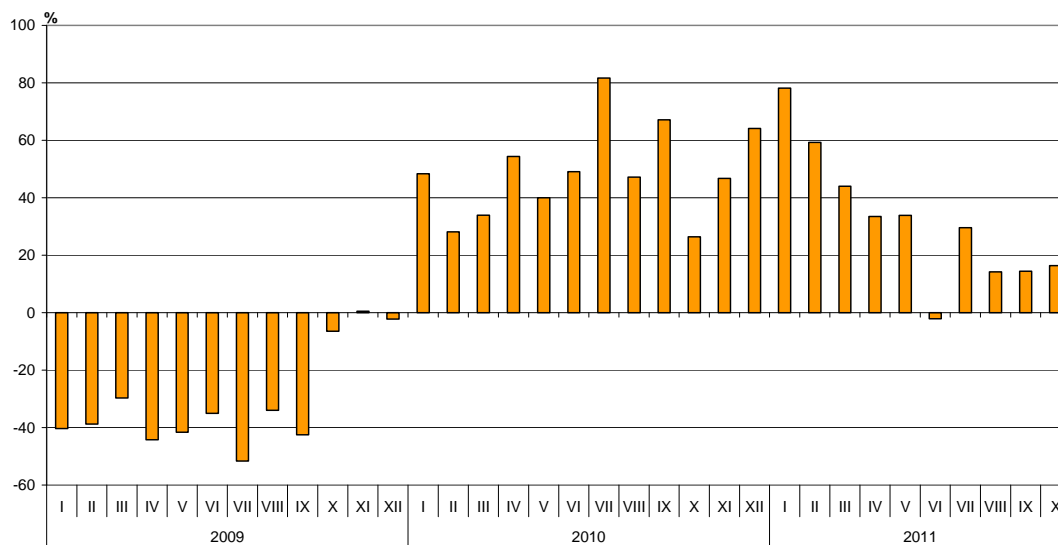


BULGARIAN TRADE WITH THIRD COUNTRIES FOR THE PERIOD JANUARY - OCTOBER 2011 (PRELIMINARY DATA)

In the period January - October 2011 the Bulgarian exports to third countries increased by **28.8%** compared to the corresponding period of the previous year and **exceeded 12.3 billion levs** (Table 1.1 and 1.2). The main trade partners of Bulgaria were Turkey, Russia, Serbia, The former Yugoslav Republic of Macedonia, Ukraine, China and USA that formed 53.2% of the total exports to non EU countries (Table 2). The exports to South Africa, Canada, India and Georgia increased significantly. The most significant falls were reported on the exports to Singapore, Syria, Peru and Viet-Nam.

In October 2011 the exports to third countries increased by **16.4%** compared to the corresponding month of the previous year and exceeded **1.2 billion levs**.

**Figure 1. Nominal growth of exports to non EU countries for the period
2009 - 2011
(Compared to the same month of the previous year)**

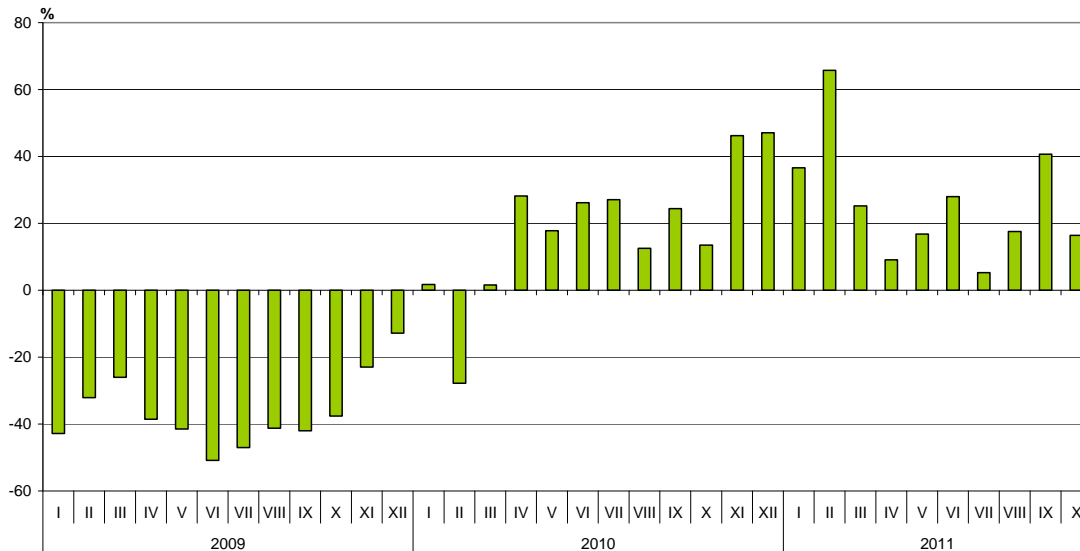


Bulgarian imports from third countries in the first ten months of 2011 increased by **23.6%** compared to the corresponding period of the previous year and **amounted to 15.4 billion levs (at CIF prices)** (Tables 1.1 and 1.2). The most significant growths were reported on the imports from Kazakhstan, United Arab Emirates, Republic of Korea and Singapore (Table 2). The largest decreases were observed in the imports from Peru, Iran and Viet-Nam.

In October 2011 the Bulgarian imports from third countries increased by **16.4%** compared to the corresponding month of the previous year and reached **1.6 billion levs**.



Figure 2. Nominal growth of imports to non EU countries for the period
2009 - 2011
(Compared to the same month of the previous year)



The foreign trade balance of Bulgaria (export FOB - import CIF) with third countries in the period January - October 2011 was negative and reached 3030.5 million leva (Table 1.1). The trade balance at FOB /FOB prices (after elimination of transport and insurance costs on imports) was also negative and amounted to 2219.6 million leva.

In **October 2011** the foreign trade balance of Bulgaria (export FOB - import CIF) with third countries was negative and reached 357.4 million leva.

The exports of Bulgaria to third countries, distributed according to the **Standard International Trade Classification**, increased in all sections in the first ten months of 2011 compared to the corresponding period of the previous year (Table 3). The largest growths were recorded in the sections: “Animal and vegetable oils, fats and waxes”¹, “Mineral fuels, lubricants and related materials” and “Crude materials, inedible (except fuel)”².

The largest growths in imports from third countries were reported in section “Chemical and related products” and “Mineral fuels, lubricants and related materials”. Falls were reported in sections “Crude materials, inedible (except fuel)” and “Beverages and tobacco”.

¹ The section includes the following divisions: Animal oils and fats ; Fixed vegetable fats and oils, crude, refined or fractionated; Animal or vegetable fats and oils, processed; waxes of animal or vegetable origin; inedible mixtures or preparations of animal or vegetable fats or oils, n.e.s.

² The section includes the following divisions: Hides, skins and furskins, raw; Oil seeds and oleaginous fruits; Crude rubber (including synthetic and reclaimed); Cork and wood; Pulp and waste paper; Textile fibres (other than wool tops and other combed wool) and their wastes (not manufactured into yarn or fabric); Crude fertilizers, other than those of division 56, and crude minerals (excluding coal, petroleum and precious stones); Metalliferous ores and metal scrap; Crude animal and vegetable materials, n.e.s.

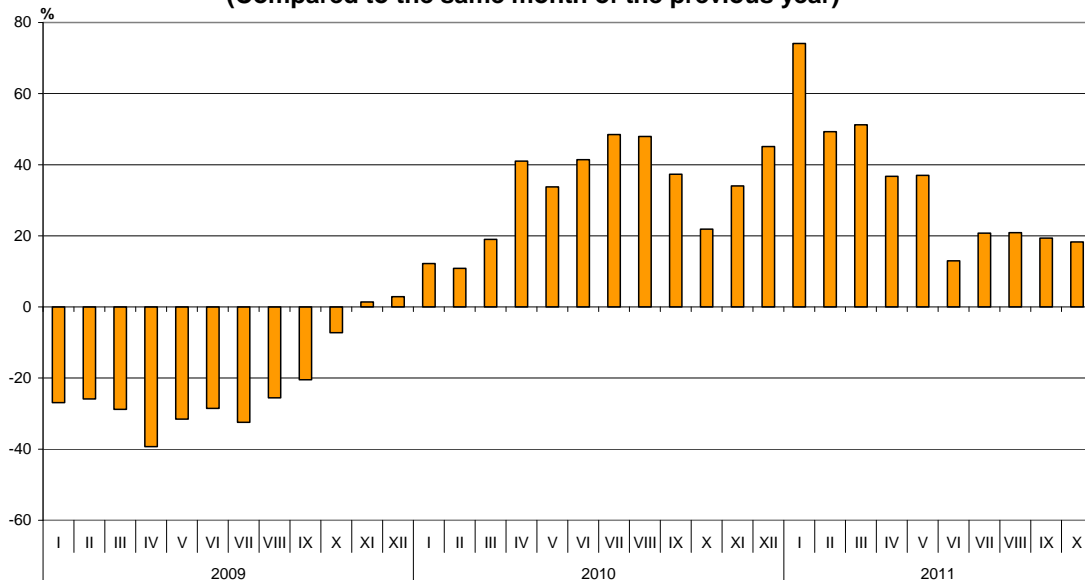


Bulgarian trade with third countries and EU - total

In the period **January - October 2011** the total value of the exported goods amounted to **32.6 billion levs**. Compared to the corresponding period of 2010 the exports **increased by 31.3%** (Table 1.1 and 1.2).

In October 2011 the total exports amounted to **3.4 billion levs** and increased by 18.3% compared to the corresponding month of the previous year.

**Figure 3. Nominal growth of exports for the period
2009 - 2011
(Compared to the same month of the previous year)**

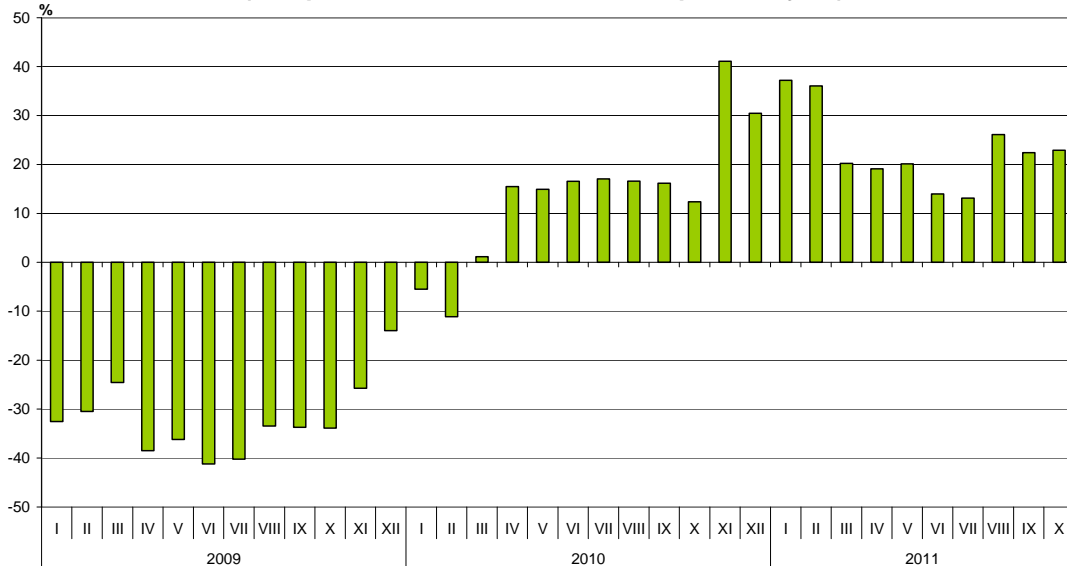


The total value of all imported goods in the period January - October 2011 was **36.8 billion levs (at CIF prices)**, or by **22.3% more** than corresponding period of the previous year (Table 1.1 and 1.2).

In October 2011 the total imports increased by **22.9%** compared to the corresponding month of the previous year and reached 4.2 billion levs.



**Figure 4. Nominal growth of imports for the period
2009 - 2011
(Compared to the same month of the previous year)**



The **total foreign trade balance (exports FOB - import CIF)** was negative in the period January – October 2011 and amounted to 4153.8 million levs which was 1072.2 million levs less than the balance in the first ten months of 2010 (Table 1.1 and 1.2). At **FOB/FOB** prices (after elimination of transport and insurance costs on imports) the balance **was also negative** and amounted to 2358.7 million levs.

In October 2011 the total foreign trade balance (**exports FOB - import CIF**) was negative and amounted to 848.9 million levs. The trade balance at FOB/FOB prices was also negative and reached 632.1 million levs.

ANNEX

Table 1.1

Exports, imports and trade balance for the period January-October 2010 and 2011¹ by months

(Million Levs)

Months	Exports - FOB			Imports - CIF			Imports - FOB ²			Trade balance - FOB/CIF			Trade balance - FOB/FOB ²		
	Total	EU	Non EU	Total	EU	Non EU	Total	EU	Non EU	Total	EU	Non EU	Total	EU	Non EU
I.2010	1785.6	1075.1	710.5	2270.3	1275.0	995.3	2162.3	1215.4	946.9	-484.7	-199.9	-284.8	-376.7	-140.3	-236.4
II.2010	1952.7	1264.3	688.4	2303.4	1537.9	765.5	2194.3	1463.3	731.0	-350.7	-273.6	-77.1	-241.6	-199.0	-42.6
III.2010	2194.7	1294.7	900.0	2976.3	1784.1	1192.2	2838.1	1705.3	1132.8	-781.6	-489.4	-292.2	-643.4	-410.6	-232.8
I-III.2010	5933.0	3634.1	2298.9	7550.0	4597.0	2953.0	7194.7	4384.0	2810.7	-1617.0	-962.9	-654.1	-1261.7	-749.9	-511.8
IV.2010	2296.7	1326.8	969.9	3129.3	1669.2	1460.1	2978.8	1595.2	1383.6	-832.6	-342.4	-490.2	-682.1	-268.4	-413.7
V.2010	2370.0	1467.1	902.9	3215.3	1857.6	1357.7	3062.8	1774.7	1288.1	-845.3	-390.5	-454.8	-692.8	-307.6	-385.2
VI.2010	2764.1	1647.6	1116.5	3263.1	1920.4	1342.7	3105.0	1833.0	1272.0	-499.0	-272.8	-226.2	-340.9	-185.4	-155.5
IV-VI.2010	7430.8	4441.5	2989.3	9607.7	5447.2	4160.5	9146.6	5202.9	3943.7	-2176.9	-1005.7	-1171.2	-1715.8	-761.4	-954.4
I-VI.2010	13363.8	8075.6	5288.2	17157.7	10044.2	7113.5	16341.3	9586.9	6754.4	-3793.9	-1968.6	-1825.3	-2977.5	-1511.3	-1466.2
VII.2010	2989.2	1921.9	1067.3	3281.6	1833.5	1448.1	3119.6	1749.4	1370.2	-292.4	88.4	-380.8	-130.4	172.5	-302.9
VIII.2010	2841.6	1774.1	1067.5	3010.8	1751.8	1259.0	2870.3	1672.1	1198.2	-169.2	22.3	-191.5	-28.7	102.0	-130.7
IX.2010	2805.7	1683.6	1122.1	3191.7	1919.3	1272.4	3041.3	1834.3	1207.0	-386.0	-235.7	-150.3	-235.6	-150.7	-84.9
VII-IX.2010	8636.5	5379.6	3256.9	9484.1	5504.6	3979.5	9031.2	5255.8	3775.4	-847.6	-125.0	-722.6	-394.7	123.8	-518.5
I-IX.2010	22000.3	13455.2	8545.1	26641.8	15548.8	11093.0	25372.5	14842.7	10529.8	-4641.5	-2093.6	-2547.9	-3372.2	-1387.5	-1984.7
X.2010	2857.0	1777.3	1079.7	3441.5	2054.9	1386.6	3273.1	1958.4	1314.7	-584.5	-277.6	-306.9	-416.1	-181.1	-235.0
I-X.2010	24857.3	15232.5	9624.8	30083.3	17603.7	12479.6	28645.6	16801.1	11844.5	-5226.0	-2371.2	-2854.8	-3788.3	-1568.6	-2219.7
I.2011	3109.2	1843.5	1265.7	3115.4	1755.5	1359.9	2966.8	1677.7	1289.1	-6.2	88.0	-94.2	142.4	165.8	-23.4
II.2011	2914.5	1818.2	1096.3	3133.8	1864.7	1269.1	2987.2	1782.8	1204.4	-219.3	-46.5	-172.8	-72.7	35.4	-108.1
III.2011	3319.8	2023.8	1296.0	3578.7	2086.1	1492.6	3409.2	1992.3	1416.9	-258.9	-62.3	-196.6	-89.4	31.5	-120.9
I-III.2011	9343.5	5685.5	3658.0	9827.9	5706.3	4121.6	9363.2	5452.8	3910.4	-484.4	-20.8	-463.6	-19.7	232.7	-252.4
IV.2011	3140.7	1846.1	1294.6	3727.4	2134.2	1593.2	3541.0	2032.7	1508.3	-586.7	-288.1	-298.6	-400.3	-186.6	-213.7
V.2011	3247.1	2038.7	1208.4	3862.7	2277.2	1585.5	3677.4	2175.5	1501.9	-615.6	-238.5	-377.1	-430.3	-136.8	-293.5
VI.2011	3122.9	2029.6	1093.3	3718.7	2000.5	1718.2	3536.5	1910.5	1626.0	-595.8	29.1	-624.9	-413.6	119.1	-532.7
IV-VI.2011	9510.7	5914.4	3596.3	11308.8	6411.9	4896.9	10754.9	6118.7	4636.2	-1798.1	-497.5	-1300.6	-1244.2	-204.3	-1039.9
I-VI.2011	18854.2	11599.9	7254.3	21136.7	12118.2	9018.5	20118.1	11571.5	8546.6	-2282.5	-518.3	-1764.2	-1263.9	28.4	-1292.3
VII.2011	3608.5	2225.9	1382.6	3712.8	2188.6	1524.2	3534.2	2091.3	1442.9	-104.3	37.3	-141.6	74.3	134.6	-60.3
VIII.2011	3436.0	2217.4	1218.6	3796.9	2316.8	1480.1	3610.1	2202.9	1407.2	-360.9	-99.4	-261.5	-174.1	14.5	-188.6
IX.2011	3349.3	2065.2	1284.1	3906.5	2116.6	1789.9	3712.2	2021.1	1691.1	-557.2	-51.4	-505.8	-362.9	44.1	-407.0
VII-IX.2011	10393.8	6508.5	3885.3	11416.2	6622.0	4794.2	10856.5	6315.3	4541.2	-1022.4	-113.5	-908.9	-462.7	193.2	-655.9
I-IX.2011	29248.0	18108.4	11139.6	32552.9	18740.2	13812.7	30974.6	17886.8	13087.8	-3304.9	-631.8	-2673.1	-1726.6	221.6	-1948.2
X.2011	3379.9	2123.2	1256.7	4228.8	2614.7	1614.1	4012.0	2483.9	1528.1	-848.9	-491.5	-357.4	-632.1	-360.7	-271.4
I-X.2011	32627.9	20231.6	12396.3	36781.7	21354.9	15426.8	34986.6	20370.7	14615.9	-4153.8	-1123.3	-3030.5	-2358.7	-139.1	-2219.6

¹ Data are preliminary as of 12.12.2011.

² By data of BNB for the transport costs.



Table 1.2

Growth of exports and imports for the period January-October 2011¹ compared to the same month of the previous year

(Per cent)

Months	Exports - FOB			Imports - CIF			Imports - FOB		
	Total	EU	Non EU	Total	EU	Non EU	Total	EU	Non EU
I	74.1	71.5	78.1	37.2	37.7	36.6	37.2	38.0	36.1
II	49.3	43.8	59.3	36.1	21.2	65.8	36.1	21.8	64.8
III	51.3	56.3	44.0	20.2	16.9	25.2	20.1	16.8	25.1
I -III	57.5	56.4	59.1	30.2	24.1	39.6	30.1	24.4	39.1
IV	36.7	39.1	33.5	19.1	27.9	9.1	18.9	27.4	9.0
V	37.0	39.0	33.8	20.1	22.6	16.8	20.1	22.6	16.6
VI	13.0	23.2	-2.1	14.0	4.2	28.0	13.9	4.2	27.8
IV-VI	28.0	33.2	20.3	17.7	17.7	17.7	17.6	17.6	17.6
I -VI	41.1	43.6	37.2	23.2	20.6	26.8	23.1	20.7	26.5
VII	20.7	15.8	29.5	13.1	19.4	5.3	13.3	19.5	5.3
VIII	20.9	25.0	14.2	26.1	32.3	17.6	25.8	31.7	17.4
IX	19.4	22.7	14.4	22.4	10.3	40.7	22.1	10.2	40.1
VII-IX	20.3	21.0	19.3	20.4	20.3	20.5	20.2	20.2	20.3
I-IX	32.9	34.6	30.4	22.2	20.5	24.5	22.1	20.5	24.3
X	18.3	19.5	16.4	22.9	27.2	16.4	22.6	26.8	16.2
I-X	31.3	32.8	28.8	22.3	21.3	23.6	22.1	21.2	23.4

¹ Data are preliminary as of 12.12.2011.


Table 2
**Exports, imports and trade balance with main non EU partner countries¹
for the period January-October 2010 and 2011²**

Countries	Exports - FOB			Imports - CIF			Trade balance - FOB/CIF	
	2010	2011	Growth - %	2010	2011	Growth - %	2010	2011
	Million Levs			Million Levs			Million Levs	
Third countries-total	9624.8	12396.3	28.8	12479.6	15426.8	23.6	-2854.8	-3030.5
of which:								
Albania	95.9	81.2	-15.3	18.2	28.2	54.9	77.7	53.0
Bosnia and Herzegovina	49.6	66.2	33.5	10.6	11.9	12.3	39.0	54.3
Brazil	42.2	50.0	18.5	134.9	168.8	25.1	-92.7	-118.8
Canada	44.7	113.6	154.1	54.0	56.8	5.2	-9.3	56.8
China	310.6	436.5	40.5	789.0	1037.1	31.4	-478.4	-600.6
Croatia	143.2	149.2	4.2	59.4	48.5	-18.4	83.8	100.7
Egypt	170.4	277.7	63.0	93.4	129.1	38.2	77.0	148.6
Georgia	216.3	363.2	67.9	256.8	328.2	27.8	-40.5	35.0
India	61.4	116.0	88.9	81.8	99.5	21.6	-20.4	16.5
Indonesia	23.8	20.1	-15.5	27.3	31.6	15.8	-3.5	-11.5
Iran	98.2	101.6	3.5	9.3	4.7	-49.5	88.9	96.9
Israel	99.1	72.8	-26.5	174.5	299.6	71.7	-75.4	-226.8
Japan	27.1	38.7	42.8	105.1	108.7	3.4	-78.0	-70.0
Kazakhstan	31.0	33.9	9.4	9.5	121.9	1183.2	21.5	-88.0
Korea, Rep. of	168.2	163.3	-2.9	84.3	181.3	115.1	83.9	-18.0
Norway	37.8	58.1	53.7	13.2	21.0	59.1	24.6	37.1
Peru	8.0	3.6	-55.0	322.7	115.5	-64.2	-314.7	-111.9
Russian Fed.	702.1	840.4	19.7	4811.9	6642.6	38.0	-4109.8	-5802.2
Serbia	879.5	793.0	-9.8	326.0	406.2	24.6	553.5	386.8
Singapore	357.1	71.9	-79.9	11.4	22.9	100.9	345.7	49.0
South Africa	11.4	126.1	1006.1	17.4	31.5	81.0	-6.0	94.6
Switzerland	155.3	199.3	28.3	279.2	300.1	7.5	-123.9	-100.8
Syria	143.6	41.0	-71.4	52.8	65.7	24.4	90.8	-24.7
Taiwan	32.1	36.3	13.1	96.7	94.1	-2.7	-64.6	-57.8
The former Yugoslav Rep. of Macedonia	516.1	738.6	43.1	417.6	422.8	1.2	98.5	315.8
Turkey	2090.2	2897.5	38.6	1670.4	1818.7	8.9	419.8	1078.8
Ukraine	274.8	455.2	65.6	1235.9	1476.4	19.5	-961.1	-1021.2
United Arab Emirates	57.4	54.3	-5.4	28.3	66.0	133.2	29.1	-11.7
USA	308.6	429.5	39.2	222.1	323.9	45.8	86.5	105.6
Viet-Nam	34.5	18.1	-47.5	50.6	27.9	-44.9	-16.1	-9.8

¹ Partner country:

- In case of exports (or dispatches) is the country (or Member State) of final destination of the goods
- In case of imports (or arrivals) is the country (or Member State) of consignment of the goods.

² Data are preliminary as of 12.12.2011.



Table 3

**Exports, imports and trade balance with non EU countries by sections of SITC, rev. 4
for the period January-October 2010 and 2011¹**

Sections by SITC	Exports - FOB			Imports - CIF			Trade balance - FOB/CIF	
	2010	2011	Growth - %	2010	2011	Growth - %	2010	2011
	Million Levs			Million Levs			Million Levs	
Third countries -total	9624.8	12396.3	28.8	12479.6	15426.8	23.6	-2854.8	-3030.5
Food and live animals	645.2	697.3	8.1	468.1	529.6	13.1	177.1	167.7
Beverages and tobacco	307.6	361.0	17.4	128.6	125.3	-2.6	179.0	235.7
Crude materials, inedible (except fuel)	913.1	1307.2	43.2	1648.0	1404.7	-14.8	-734.9	-97.5
Mineral fuel, lubricants and related materials	2450.2	3574.9	45.9	5650.8	7598.1	34.5	-3200.6	-4023.2
Animals and vegetable oils, fats and waxes	37.3	54.9	47.2	36.4	37.1	1.9	0.9	17.8
Chemical and related products n.e.c.	1182.0	1384.0	17.1	701.0	960.3	37.0	481.0	423.7
Manufactured goods classified chiefly by material	2192.0	2772.5	26.5	1798.1	2377.2	32.2	393.9	395.3
Machinery and transport equipment	1125.9	1457.5	29.5	1504.3	1808.4	20.2	-378.4	-350.9
Miscellaneous manufactured articles	755.7	761.6	0.8	528.5	559.2	5.8	227.2	202.4
Commodities and transactions n.e.c.	15.8	25.4	60.8	15.8	26.9	70.3	0.0	-1.5

¹ Data are preliminary as of 12.12.2011.