

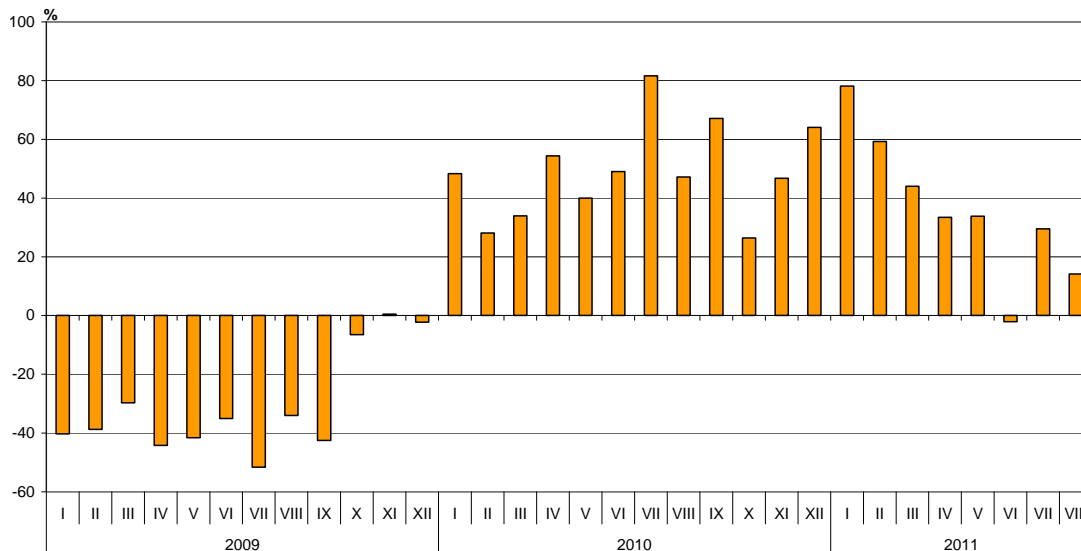


## BULGARIAN TRADE WITH THIRD COUNTRIES FOR THE PERIOD JANUARY - AUGUST 2011 (PRELIMINARY DATA)

**In the period January - August 2011 the Bulgarian exports to third countries increased by 32.8%** compared to the corresponding period of the previous year and **exceeded 9.8 billion leva** (Table 1.1 and 1.2). The main trade partners of Bulgaria were Turkey, Serbia, Russia, The former Yugoslav Republic of Macedonia, China, Ukraine and USA that formed 53.7% of the total exports to non EU countries (Table 2). The exports to South Africa, Canada and Ukraine increased significantly. The most significant falls were reported on the exports to Syria, Singapore, Peru and Viet-Nam.

**In August 2011 the exports to third countries increased by 14.2%** compared to the corresponding month of the previous year and amounted to **1.2 billion leva**.

**Figure 1. Nominal growth of exports to non EU countries for the period  
2009 - 2011  
(Compared to the same month of the previous year)**

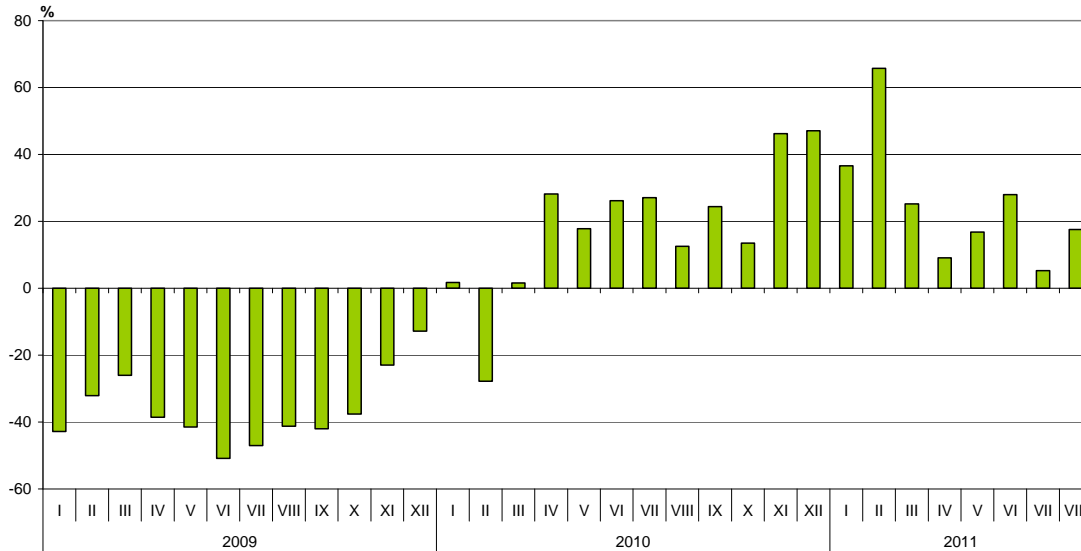


**Bulgarian imports from third countries in the first eight months of 2011 increased by 22.4%** compared to the corresponding period of the previous year and **amounted to 12.0 billion leva (at CIF prices)** (Tables 1.1 and 1.2). The most significant growths were reported on the imports from Kazakhstan, United Arab Emirates, Singapore and Republic of Korea (Table 2). The largest decreases were observed in the imports from Peru, Viet-Nam and Iran.

**In August 2011 the Bulgarian imports from third countries increased by 17.6%** compared to the corresponding month of the previous year and exceeded **1.4 billion leva**.



Figure 2. Nominal growth of imports to non EU countries for the period  
2009 - 2011  
(Compared to the same month of the previous year)



The foreign trade balance of Bulgaria (export FOB - import CIF) with third countries in the period January - August 2011 was negative and reached 2167.3 million leva (Table 1.1). The trade balance at FOB /FOB prices (after elimination of transport and insurance costs on imports) was also negative and amounted to 1541.2 million leva.

In August 2011 the foreign trade balance of Bulgaria (export FOB - import CIF) with third countries was negative and reached 261.5 million leva.

The exports of Bulgaria to third countries, distributed according to the **Standard International Trade Classification**, increased in the most of the sections in the first eight months of 2011 compared to the corresponding period of the previous year (Table 3). The largest growths were recorded in the sections: “Animal and vegetable oils, fats and waxes”<sup>1</sup>, “Mineral fuels, lubricants and related materials” and “Crude materials, inedible (except fuel)”<sup>2</sup>. Fall was observed in section “Miscellaneous manufactured articles”<sup>3</sup>.

<sup>1</sup> The section includes the following divisions: Animal oils and fats ; Fixed vegetable fats and oils, crude, refined or fractionated; Animal or vegetable fats and oils, processed; waxes of animal or vegetable origin; inedible mixtures or preparations of animal or vegetable fats or oils, n.e.s.

<sup>2</sup> The section includes the following divisions: Hides, skins and furskins, raw; Oil seeds and oleaginous fruits; Crude rubber (including synthetic and reclaimed); Cork and wood; Pulp and waste paper; Textile fibres (other than wool tops and other combed wool) and their wastes (not manufactured into yarn or fabric); Crude fertilizers, other than those of division 56, and crude minerals (excluding coal, petroleum and precious stones); Metalliferous ores and metal scrap; Crude animal and vegetable materials, n.e.s.

<sup>3</sup> The section includes the following divisions: prefabricated buildings; sanitary, plumbing, heating and lightning fixtures and fittings, n.e.s. ; furniture and parts thereof; bedding, mattresses, mattress supports, cushions and similar stuffed furnishings; travel goods, handbags and similar containers; articles of apparel and clothing accessories; footwear; professional, scientific and controlling instruments and apparatus, n.e.s.; . photographic apparatus, equipment and supplies and optical goods, n.e.s.; watches and clocks; miscellaneous manufactured articles, n.e.s.



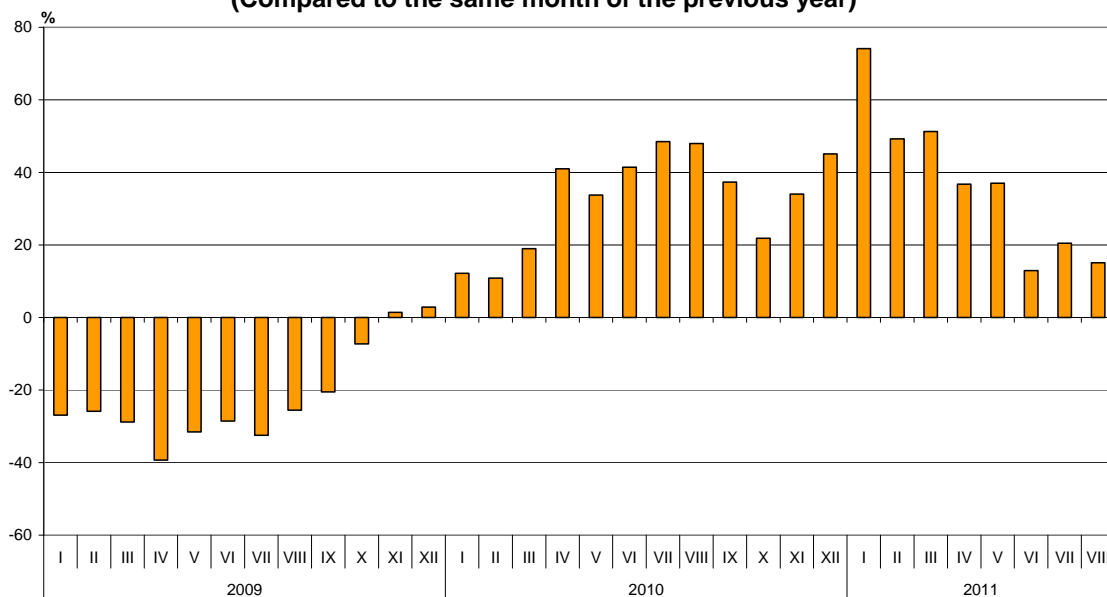
The largest growths in imports from third countries were reported in section “Chemical and related products”. Falls were reported in sections “Crude materials, inedible (except fuel)” and “Beverages and tobacco”.

### Bulgarian trade with third countries and EU - total

In the period **January - August 2011 the total value of the exported goods amounted to 25.7 billion levs**. Compared to the corresponding period of 2010 the exports **increased by 34.0%** (Table 1.1 and 1.2).

In August 2011 **the total exports amounted to 3.3 billion levs** and increased by 15.1% compared to the corresponding month of the previous year.

**Figure 3. Nominal growth of exports for the period 2009 - 2011**  
(Compared to the same month of the previous year)

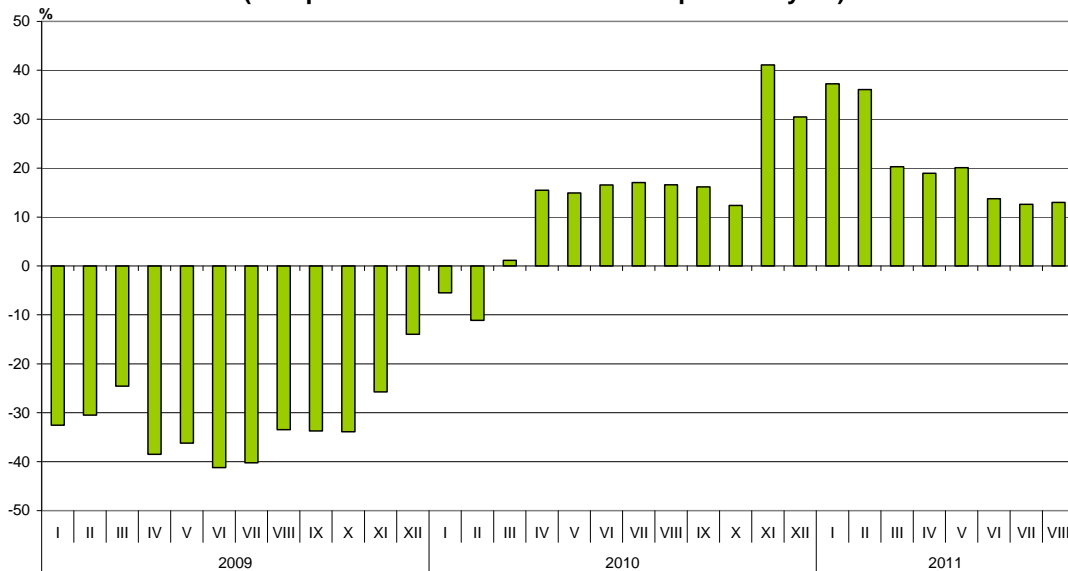


**The total value of all imported goods in the period January - August 2011 was 28.2 billion levs (at CIF prices), or by 20.3% more than corresponding period of the previous year** (Table 1.1 and 1.2).

In August 2011 **the total imports increased by 13.0%** compared to the corresponding month of the previous year and reached 3.4 billion levs.



Figure 4. Nominal growth of imports for the period  
2009 - 2011  
(Compared to the same month of the previous year)



The **total foreign trade balance (exports FOB - import CIF)** was negative in the period January – August 2011 and amounted to 2497.8 million levs which was 1757.7 million levs less than the balance in the first eight months of 2010 (Table 1.1 and 1.2). At **FOB/FOB** prices (after elimination of transport and insurance costs on imports) the balance **was also negative** and amounted to 1133.0 million levs.

In August 2011 the total foreign trade balance (**exports FOB - import CIF**) was negative and amounted to 131.6 million levs. The trade balance at FOB/FOB prices was positive and reached 37.4 million levs.

## ANNEX

Table 1.1

Exports, imports and trade balance for the period January-August 2010 and 2011<sup>1</sup> by months

(Million Levs)

Months	Exports - FOB			Imports - CIF			Imports - FOB <sup>2</sup>			Trade balance - FOB/CIF			Trade balance - FOB/FOB <sup>2</sup>		
	Total	EU	Non EU	Total	EU	Non EU	Total	EU	Non EU	Total	EU	Non EU	Total	EU	Non EU
I.2010	1785.6	1075.1	710.5	2270.3	1275.0	995.3	2162.3	1215.4	946.9	-484.7	-199.9	-284.8	-140.3	-236.4	
II.2010	1952.7	1264.3	688.4	2303.4	1537.9	765.5	2194.3	1463.3	731.0	-350.7	-273.6	-77.1	-241.6	-199.0	-42.6
III.2010	2194.7	1294.7	900.0	2976.3	1784.1	1192.2	2838.1	1705.3	1132.8	-781.6	-489.4	-292.2	-643.4	-410.6	-232.8
<b>I-III.2010</b>	<b>5933.0</b>	<b>3634.1</b>	<b>2298.9</b>	<b>7550.0</b>	<b>4597.0</b>	<b>2953.0</b>	<b>7194.7</b>	<b>4384.0</b>	<b>2810.7</b>	<b>-1617.0</b>	<b>-962.9</b>	<b>-654.1</b>	<b>-1261.7</b>	<b>-749.9</b>	<b>-511.8</b>
IV.2010	2296.7	1326.8	969.9	3129.3	1669.2	1460.1	2978.8	1595.2	1383.6	-832.6	-342.4	-490.2	-682.1	-268.4	-413.7
V.2010	2370.0	1467.1	902.9	3215.3	1857.6	1357.7	3062.8	1774.7	1288.1	-845.3	-390.5	-454.8	-692.8	-307.6	-385.2
VI.2010	2764.1	1647.6	1116.5	3263.1	1920.4	1342.7	3105.0	1833.0	1272.0	-499.0	-272.8	-226.2	-340.9	-185.4	-155.5
<b>IV-VI.2010</b>	<b>7430.8</b>	<b>4441.5</b>	<b>2989.3</b>	<b>9607.7</b>	<b>5447.2</b>	<b>4160.5</b>	<b>9146.6</b>	<b>5202.9</b>	<b>3943.7</b>	<b>-2176.9</b>	<b>-1005.7</b>	<b>-1171.2</b>	<b>-1715.8</b>	<b>-761.4</b>	<b>-954.4</b>
<b>I-VI.2010</b>	<b>13363.8</b>	<b>8075.6</b>	<b>5288.2</b>	<b>17157.7</b>	<b>10044.2</b>	<b>7113.5</b>	<b>16341.3</b>	<b>9586.9</b>	<b>6754.4</b>	<b>-3793.9</b>	<b>-1968.6</b>	<b>-1825.3</b>	<b>-2977.5</b>	<b>-1511.3</b>	<b>-1466.2</b>
VII.2010	2989.2	1921.9	1067.3	3281.6	1833.5	1448.1	3119.6	1749.4	1370.2	-292.4	88.4	-380.8	-130.4	172.5	-302.9
VIII.2010	2841.6	1774.1	1067.5	3010.8	1751.8	1259.0	2870.3	1672.1	1198.2	-169.2	22.3	-191.5	-28.7	102.0	-130.7
<b>I-VIII.2010</b>	<b>19194.6</b>	<b>11771.6</b>	<b>7423.0</b>	<b>23450.1</b>	<b>13629.5</b>	<b>9820.6</b>	<b>22331.2</b>	<b>13008.4</b>	<b>9322.8</b>	<b>-4255.5</b>	<b>-1857.9</b>	<b>-2397.6</b>	<b>-3136.6</b>	<b>-1236.8</b>	<b>-1899.8</b>
I.2011	3109.1	1843.4	1265.7	3115.9	1756.0	1359.9	2967.3	1678.2	1289.1	-6.8	87.4	-94.2	141.8	165.2	-23.4
II.2011	2914.4	1818.1	1096.3	3134.5	1865.4	1269.1	2987.8	1783.4	1204.4	-220.1	-47.3	-172.8	-73.4	34.7	-108.1
III.2011	3318.9	2022.9	1296.0	3579.3	2086.7	1492.6	3409.7	1992.8	1416.9	-260.4	-63.8	-196.6	-90.8	30.1	-120.9
<b>I-III.2011</b>	<b>9342.4</b>	<b>5684.4</b>	<b>3658.0</b>	<b>9829.7</b>	<b>5708.1</b>	<b>4121.6</b>	<b>9364.8</b>	<b>5454.4</b>	<b>3910.4</b>	<b>-487.3</b>	<b>-23.7</b>	<b>-463.6</b>	<b>-22.4</b>	<b>230.0</b>	<b>-252.4</b>
IV.2011	3140.2	1845.6	1294.6	3722.4	2129.2	1593.2	3536.3	2028.0	1508.3	-582.2	-283.6	-298.6	-396.1	-182.4	-213.7
V.2011	3247.3	2038.9	1208.4	3860.7	2275.2	1585.5	3675.5	2173.6	1501.9	-613.4	-236.3	-377.1	-428.2	-134.7	-293.5
VI.2011	3121.6	2028.3	1093.3	3711.0	1992.8	1718.2	3529.1	1903.1	1626.0	-589.4	35.5	-624.9	-407.5	125.2	-532.7
<b>IV-VI.2011</b>	<b>9509.1</b>	<b>5912.8</b>	<b>3596.3</b>	<b>11294.1</b>	<b>6397.2</b>	<b>4896.9</b>	<b>10740.9</b>	<b>6104.7</b>	<b>4636.2</b>	<b>-1785.0</b>	<b>-484.4</b>	<b>-1300.6</b>	<b>-1231.8</b>	<b>-191.9</b>	<b>-1039.9</b>
<b>I-VI.2011</b>	<b>18851.5</b>	<b>11597.2</b>	<b>7254.3</b>	<b>21123.8</b>	<b>12105.3</b>	<b>9018.5</b>	<b>20105.7</b>	<b>11559.1</b>	<b>8546.6</b>	<b>-2272.3</b>	<b>-508.1</b>	<b>-1764.2</b>	<b>-1254.2</b>	<b>38.1</b>	<b>-1292.3</b>
VII.2011	3601.5	2218.9	1382.6	3695.4	2171.2	1524.2	3517.7	2074.8	1442.9	-93.9	47.7	-141.6	83.8	144.1	-60.3
VIII.2011	3270.2	2051.6	1218.6	3401.8	1921.7	1480.1	3232.8	1825.6	1407.2	-131.6	129.9	-261.5	37.4	226.0	-188.6
<b>I-VIII.2011</b>	<b>25723.2</b>	<b>15867.7</b>	<b>9855.5</b>	<b>28221.0</b>	<b>16198.2</b>	<b>12022.8</b>	<b>26856.2</b>	<b>15459.5</b>	<b>11396.7</b>	<b>-2497.8</b>	<b>-330.5</b>	<b>-2167.3</b>	<b>-1133.0</b>	<b>408.2</b>	<b>-1541.2</b>

<sup>1</sup> Data are preliminary as of 10.10.2011.

<sup>2</sup> By data of BNB for the transport costs.



Table 1.2

Growth of exports and imports for the period January-August 2011<sup>1</sup> compared to the same month of the previous year

(Per cent)

Months	Exports - FOB			Imports - CIF			Imports - FOB		
	Total	EU	Non EU	Total	EU	Non EU	Total	EU	Non EU
I	74.1	71.5	78.1	37.2	37.7	36.6	37.2	38.1	36.1
II	49.2	43.8	59.3	36.1	21.3	65.8	36.2	21.9	64.8
III	51.2	56.2	44.0	20.3	17.0	25.2	20.1	16.9	25.1
<b>I - III</b>	<b>57.5</b>	<b>56.4</b>	<b>59.1</b>	<b>30.2</b>	<b>24.2</b>	<b>39.6</b>	<b>30.2</b>	<b>24.4</b>	<b>39.1</b>
IV	36.7	39.1	33.5	19.0	27.6	9.1	18.7	27.1	9.0
V	37.0	39.0	33.8	20.1	22.5	16.8	20.0	22.5	16.6
VI	12.9	23.1	-2.1	13.7	3.8	28.0	13.7	3.8	27.8
<b>IV - VI</b>	<b>28.0</b>	<b>33.1</b>	<b>20.3</b>	<b>17.6</b>	<b>17.4</b>	<b>17.7</b>	<b>17.4</b>	<b>17.3</b>	<b>17.6</b>
<b>I - VI</b>	<b>41.1</b>	<b>43.6</b>	<b>37.2</b>	<b>23.1</b>	<b>20.5</b>	<b>26.8</b>	<b>23.0</b>	<b>20.6</b>	<b>26.5</b>
VII	20.5	15.5	29.5	12.6	18.4	5.3	12.8	18.6	5.3
VIII	15.1	15.6	14.2	13.0	9.7	17.6	12.6	9.2	17.4
<b>I - VIII</b>	<b>34.0</b>	<b>34.8</b>	<b>32.8</b>	<b>20.3</b>	<b>18.8</b>	<b>22.4</b>	<b>20.3</b>	<b>18.8</b>	<b>22.2</b>

<sup>1</sup> Data are preliminary as of 10.10.2011.


**Table 2**
**Exports, imports and trade balance with main non EU partner countries<sup>1</sup>  
for the period January-August 2010 and 2011<sup>2</sup>**

Countries	Exports - FOB			Imports - CIF			Trade balance - FOB/CIF	
	2010	2011	Growth - %	2010	2011	Growth - %	2010	2011
	Million Levs			Million Levs			Million Levs	
<b>Third countries-total</b>	<b>7423.0</b>	<b>9855.5</b>	<b>32.8</b>	<b>9820.6</b>	<b>12022.8</b>	<b>22.4</b>	<b>-2397.6</b>	<b>-2167.3</b>
of which:								
Albania	77.6	61.1	-21.3	13.5	22.6	67.4	64.1	38.5
Bosnia and Herzegovina	39.7	53.1	33.8	9.0	8.9	-1.1	30.7	44.2
Brazil	34.5	44.1	27.8	99.0	100.0	1.0	-64.5	-55.9
Canada	34.2	79.7	133.0	50.1	53.7	7.2	-15.9	26.0
China	251.8	364.6	44.8	607.7	807.6	32.9	-355.9	-443.0
Croatia	126.3	135.0	6.9	35.8	37.5	4.7	90.5	97.5
Egypt	140.0	191.7	36.9	85.8	119.8	39.6	54.2	71.9
Georgia	161.5	263.1	62.9	226.0	264.4	17.0	-64.5	-1.3
India	53.7	107.3	99.8	61.3	81.4	32.8	-7.6	25.9
Indonesia	19.7	15.5	-21.3	20.4	26.8	31.4	-0.7	-11.3
Iran	74.0	66.8	-9.7	7.8	4.2	-46.2	66.2	62.6
Israel	54.8	57.5	4.9	141.5	219.7	55.3	-86.7	-162.2
Japan	21.8	30.6	40.4	82.2	88.7	7.9	-60.4	-58.1
Kazakhstan	20.8	25.6	23.1	4.5	111.3	2373.3	16.3	-85.7
Korea, Rep. of	105.2	126.8	20.5	67.1	143.1	113.3	38.1	-16.3
Norway	28.6	43.3	51.4	8.5	16.7	96.5	20.1	26.6
Peru	7.6	3.1	-59.2	308.6	42.5	-86.2	-301.0	-39.4
Russian Fed.	526.4	642.7	22.1	3741.3	5118.4	36.8	-3214.9	-4475.7
Serbia	680.4	645.4	-5.1	255.5	320.4	25.4	424.9	325.0
Singapore	353.5	69.6	-80.3	8.2	18.0	119.5	345.3	51.6
South Africa	8.4	122.1	1353.6	12.8	25.2	96.9	-4.4	96.9
Switzerland	119.5	158.1	32.3	210.3	240.6	14.4	-90.8	-82.5
Syria	109.0	13.5	-87.6	41.8	49.9	19.4	67.2	-36.4
Taiwan	24.6	30.4	23.6	77.6	74.5	-4.0	-53.0	-44.1
The former Yugoslav Rep. of Macedonia	380.0	593.3	56.1	316.8	337.0	6.4	63.2	256.3
Turkey	1612.8	2359.2	46.3	1324.7	1471.6	11.1	288.1	887.6
Ukraine	157.6	355.7	125.7	982.4	1178.5	20.0	-824.8	-822.8
United Arab Emirates	48.7	41.1	-15.6	19.2	61.1	218.2	29.5	-20.0
USA	239.6	335.2	39.9	172.7	257.7	49.2	66.9	77.5
Viet-Nam	28.1	14.5	-48.4	45.5	22.0	-51.6	-17.4	-7.5

<sup>1</sup> Partner country:

- In case of exports (or dispatches) is the country (or Member State) of final destination of the goods
- In case of imports (or arrivals) is the country (or Member State) of consignment of the goods.

<sup>2</sup> Data are preliminary as of 10.10.2011.



**Table 3**

**Exports, imports and trade balance with non EU countries by sections of SITC, rev. 4  
for the period January-August 2010 and 2011<sup>1</sup>**

Sections by SITC	Exports - FOB			Imports - CIF			Trade balance - FOB/CIF	
	2010	2011	Growth - %	2010	2011	Growth - %	2010	2011
	Million Levs			Million Levs			Million Levs	
<b>Third countries -total</b>	<b>7423.0</b>	<b>9855.5</b>	<b>32.8</b>	<b>9820.6</b>	<b>12022.8</b>	<b>22.4</b>	<b>-2397.6</b>	<b>-2167.3</b>
Food and live animals	454.0	504.7	11.2	365.2	386.9	5.9	88.8	117.8
Beverages and tobacco	234.2	274.3	17.1	100.8	89.0	-11.7	133.4	185.3
Crude materials, inedible (except fuel)	714.2	1047.5	46.7	1425.5	1087.6	-23.7	-711.3	-40.1
Mineral fuel, lubricants and related materials	1876.7	2885.1	53.7	4412.0	5906.9	33.9	-2535.3	-3021.8
Animals and vegetable oils, fats and waxes	25.1	41.0	63.3	28.5	30.1	5.6	-3.4	10.9
Chemical and related products n.e.c.	912.0	1069.9	17.3	544.6	761.9	39.9	367.4	308.0
Manufactured goods classified chiefly by material	1701.3	2270.7	33.5	1371.0	1883.6	37.4	330.3	387.1
Machinery and transport equipment	860.3	1142.7	32.8	1152.2	1415.8	22.9	-291.9	-273.1
Miscellaneous manufactured articles	632.6	605.7	-4.3	410.0	444.4	8.4	222.6	161.3
Commodities and transactions n.e.c.	12.6	13.9	10.3	10.8	16.6	53.7	1.8	-2.7

<sup>1</sup> Data are preliminary as of 10.10.2011.