

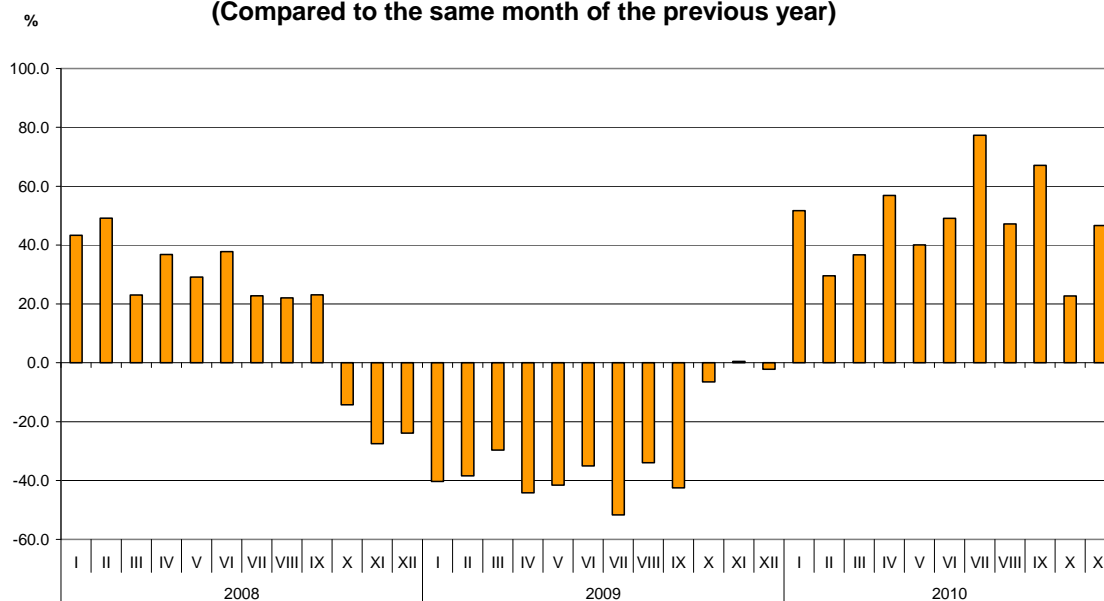


BULGARIAN TRADE WITH THIRD COUNTRIES FOR THE PERIOD JANUARY - NOVEMBER 2010 (PRELIMINARY DATA)

In the period January - November 2010 the Bulgarian exports to third countries increased by 46.9% compared to the corresponding period of the previous year and amounted to 10.7 billion leva (Table 1.1 and 1.2). The main trade partners of Bulgaria were Turkey, Serbia, Russia, the former Yugoslav Republic of Macedonia, Ukraine, USA, Singapore and China that formed 57% of the total exports to non EU countries (Table 2). The exported goods to China increased by 140.6% and those to Ukraine by 104%. The exports to Russia and Serbia reported growths by 53.1%. and by 50.6% respectively, to the former Yugoslav Republic of Macedonia by 36.5% and to USA by 9.8%. The exports to Peru, Republic of Korea, India, Viet Nam and Brazil increased significantly. Falls were reported on the exports to United Arab Emirates, Bosnia and Herzegovina, Canada, Indonesia, Singapore, Albania and Egypt.

In November 2010 the exports to third countries increased by 46.6% compared to the corresponding month of the previous year and were over 1 billion leva.

**Figure 1. Nominal growth of exports to non EU countries for the period
2008 - 2010
(Compared to the same month of the previous year)**

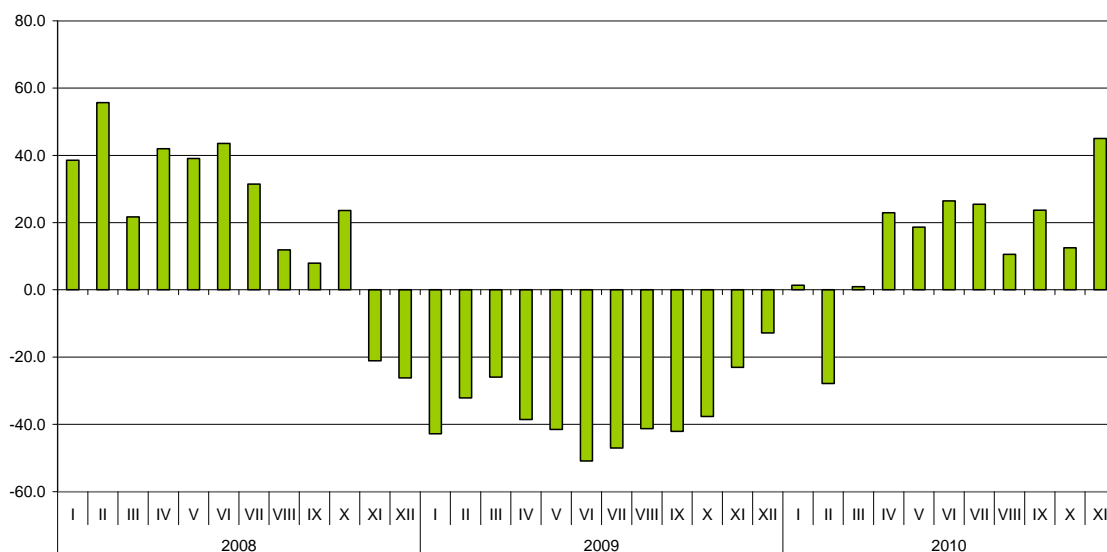




Bulgarian imports from third countries in the first eleven months of 2010 increased by 14.6% compared to the corresponding period of the previous year and amounted to 13.9 billion leva (at CIF prices) (Tables 1.1 and 1.2). The most significant growths were reported on the imports from Egypt, Albania and Israel (Table 2). The imports from Peru increased by 62.2% and from Bosnia and Herzegovina by 46.9%. The largest decreases were observed in the imports from Kazakhstan, South Africa and Norway.

In November 2010 the Bulgarian imports from third countries increased by 45% compared to the corresponding month of the previous year and amounted to 1.6 billion leva (at CIF prices) .

Figure 2. Nominal growth of imports from non EU countries for the period 2008 - 2010 (Compared to the same month of the previous year)



The foreign trade balance of Bulgaria (export FOB - import CIF) with third countries in the period January - November 2010 was negative and amounted to 3.2 billion leva (Table 1.1).

In November 2010 the foreign trade balance of Bulgaria (export FOB - import CIF) with third countries was negative and amounted to 465.7 million leva.



The **exports** of Bulgaria to **third countries**, distributed according to the **Standard International Trade Classification**, increased in the most of sections in the first eleven months of 2010 compared to the corresponding period of 2009 (Table 3). The largest growths were recorded in the sections “Miscellaneous manufactured articles”¹ “Crude materials, inedible (except fuel)”², and “Manufactured goods classified chiefly by material”³.

The largest growths in **imports** from **third countries** were reported in section “Mineral fuels, lubricants and related materials” and the most significant falls were in section “Food and live animals”.

Bulgarian trade with third countries and EU - total

In the period January - November 2010 **the total value of the exported goods** was for **27.7 billion levs** and compared to the corresponding period of 2009 the exports **increased by 31.8%** (Table 1.1 and 1.2).

In November 2010 **the total exports amounted to 2.8 billion levs** and increased by 33.3% compared to the corresponding month of the previous year.

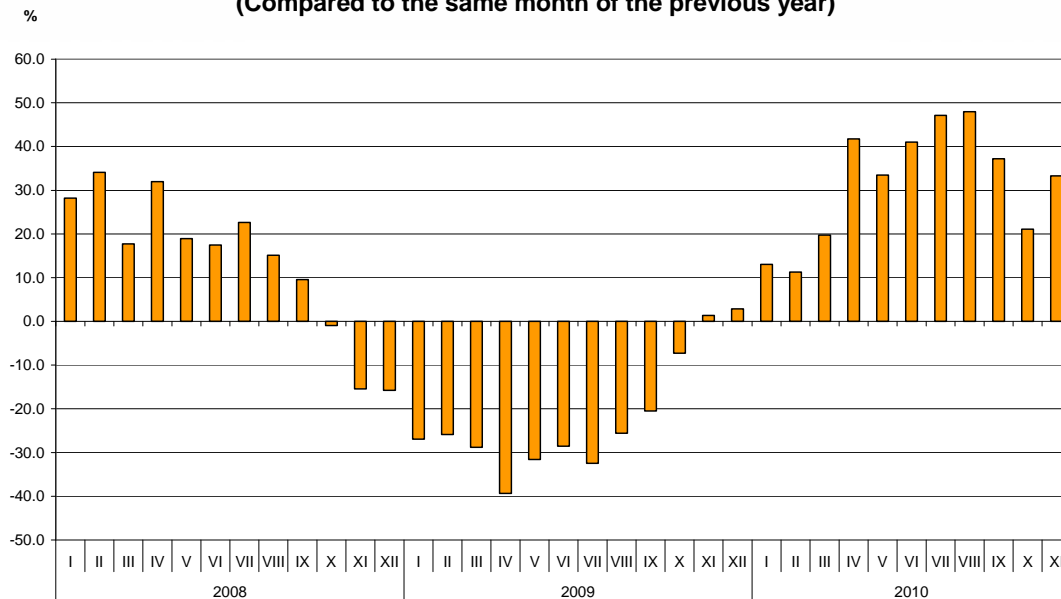
¹ The section includes the following divisions: Prefabricated buildings; sanitary, plumbing, heating and lightning fixtures and fittings, n.e.s. ; Furniture and parts thereof; bedding, mattresses, mattress supports, cushions and similar stuffed furnishings; Travel goods, handbags and similar containers; Articles of apparel and clothing accessories; Footwear; Professional, scientific and controlling instruments and apparatus, n.e.s.; . Photographic apparatus, equipment and supplies and optical goods, n.e.s.; watches and clocks; Miscellaneous manufactured articles, n.e.s.

² The section includes the following divisions: raw hides, skins and furskins; oil-seeds and oleaginous fruits; crude rubber; cork and wood; pulp and waste paper; textile fibres and their wastes; crude fertilizers and crude minerals; metalliferous ores and metal scrap; crude animal and vegetable materials, n.e.s.

³ The section includes the following divisions: leather, leather manufactures, n.e.s. and dressed furskins; rubber manufactures, n.e.s; cork and wood manufactures (excluding furniture); paper, paperboard and articles of paper pulp, of paper or of paperboard; textile yarn, fabrics, made-up articles, n.e.s., and related products; non-metallic mineral manufactures, n.e.s.; iron and steel; non-ferrous metals; manufactures of metals, n.e.s.



**Figure 3. Nominal growth of exports for the period 2008 - 2010
(Compared to the same month of the previous year)**

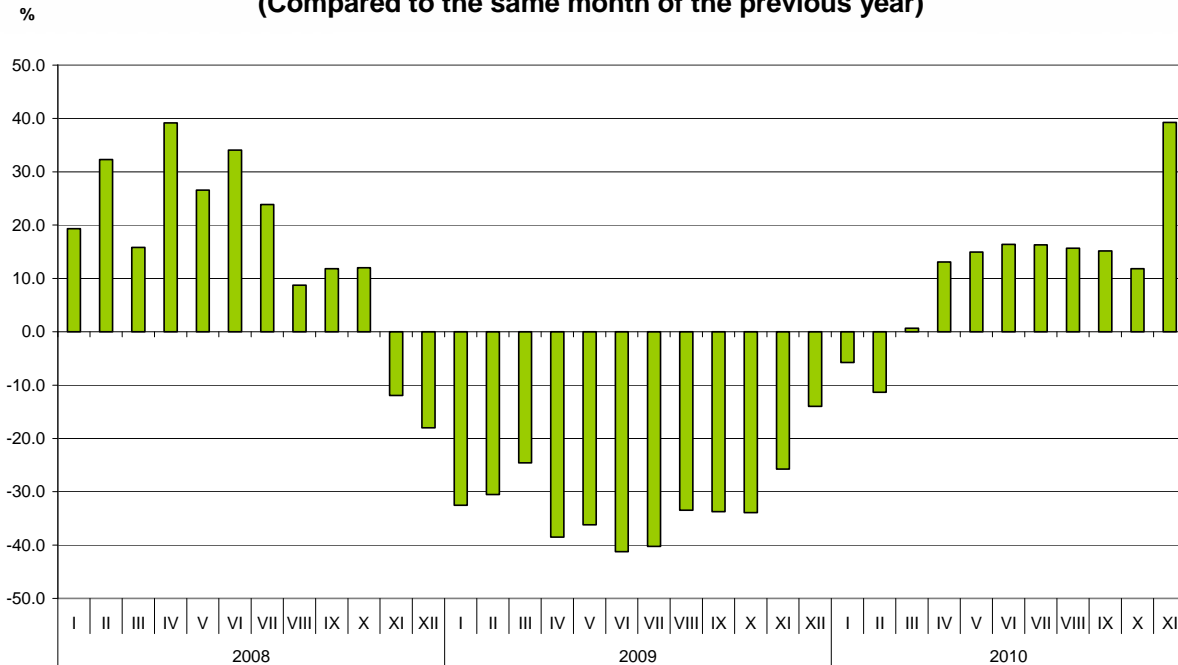


The total imported goods in the period January - November 2010 were for **33.8 billion levs (at CIF prices)** or by **11.7% more** than in the corresponding period of the previous year (Table 1.1 and 1.2).

In November 2010 the total imports (at CIF prices) increased by 39.2% compared to the corresponding period of the previous year and amounted to 3.9 billion levs.



**Figure 4. Nominal growth of imports for the period 2008 - 2010
(Compared to the same month of the previous year)**



The total foreign trade balance (exports FOB - import CIF) was negative in the period January - November 2010 and amounted to 6.1 billion levs which was over 3.1 billion levs less than the balance in the first ten months of 2009 (Table 1.1 and 1.2). At FOB/FOB prices (after elimination of transport and insurance costs on imports) the negative balance in the period January - November 2010 amounted to 4.1 billion levs.

In November 2010 the **total foreign trade balance (exports FOB - import CIF)** was negative and amounted to **1 billion levs** while at **FOB/FOB** prices was also negative and reached to **807.4 million levs**.

EXPORTS, IMPORTS AND TRADE BALANCE FOR THE PERIOD JANUARY - NOVEMBER 2009 AND 2010¹ BY MONTHS

Table 1.1

(Million Levs)

Months	Exports - FOB			Imports - CIF			Imports - FOB ²			Trade balance - FOB/CIF			Trade balance - FOB/FOB ²		
	Total	EU	Non EU	Total	EU	Non EU	Total	EU	Non EU	Total	EU	Non EU	Total	EU	Non EU
I.2009	1592.0	1113.0	479.0	2402.5	1423.7	978.8	2246.0	1348.8	897.2	-810.5	-310.7	-499.8	-654.0	-235.8	-418.2
II.2009	1761.9	1221.6	540.3	2591.2	1530.8	1060.4	2435.9	1450.3	985.6	-829.3	-309.2	-520.1	-674.0	-228.7	-445.3
III.2009	1844.9	1172.8	672.1	2942.5	1769.0	1173.5	2777.2	1678.6	1098.6	-1097.6	-596.2	-501.4	-932.3	-505.8	-426.5
I - III.2009	5198.8	3507.4	1691.4	7936.2	4723.5	3212.7	7459.1	4477.7	2981.4	-2737.4	-1216.1	-1521.3	-2260.3	-970.3	-1290.0
IV.2009	1628.8	1000.5	628.3	2709.2	1570.4	1138.8	2551.2	1490.9	1060.3	-1080.4	-569.9	-510.5	-922.4	-490.4	-432.0
V.2009	1771.5	1126.6	644.9	2797.8	1645.2	1152.6	2630.8	1560.4	1070.4	-1026.3	-518.6	-507.7	-859.3	-433.8	-425.5
VI.2009	1955.0	1205.9	749.1	2799.7	1735.3	1064.4	2632.6	1644.9	987.7	-844.7	-529.4	-315.3	-677.6	-439.0	-238.6
IV - VI.2009	5355.3	3333.0	2022.3	8306.7	4950.9	3355.8	7814.6	4696.2	3118.4	-2951.4	-1617.9	-1333.5	-2459.3	-1363.2	-1096.1
I - VI.2009	10554.1	6840.4	3713.7	16242.9	9674.4	6568.5	15273.7	9173.9	6099.8	-5688.8	-2834.0	-2854.8	-4719.6	-2333.5	-2386.1
VII.2009	2012.9	1425.3	587.6	2803.8	1664.1	1139.7	2640.0	1577.7	1062.3	-552.1	-238.8	-552.1	-627.1	-152.4	-474.7
VIII.2009	1920.4	1195.0	725.4	2582.8	1463.9	1118.9	2423.3	1388.6	1034.7	-662.4	-268.9	-393.5	-502.9	-193.6	-309.3
IX.2009	2043.4	1372.1	671.3	2747.3	1724.4	1022.9	2587.2	1637.9	949.3	-703.9	-352.3	-351.6	-543.8	-265.8	-278.0
VII-IX.2009	5976.7	3992.4	1984.3	8133.9	4852.4	3281.5	7650.5	4604.2	3046.3	-2157.2	-860.0	-1297.2	-1673.8	-611.8	-1062.0
I - IX.2009	16530.8	10832.8	5698.0	24376.8	14526.8	9850.0	22924.2	13778.1	9146.1	-7846.0	-3694.0	-4152.0	-6393.4	-2945.3	-3448.1
X.2009	2344.5	1490.4	854.1	3062.9	1841.4	1221.5	2879.9	1746.5	1133.4	-718.4	-351.0	-367.4	-535.4	-256.1	-279.3
XI.2009	2125.4	1376.2	749.2	2781.1	1702.4	1078.7	2616.7	1614.9	1001.8	-655.7	-326.2	-329.5	-491.3	-238.7	-252.6
I-XI.2009	21000.7	13699.4	7301.3	30220.8	18070.6	12150.2	28420.8	17139.5	11281.3	-9220.1	-4371.2	-4848.9	-7420.1	-3440.1	-3980.0
I.2010	1800.0	1073.2	726.8	2264.0	1271.6	992.4	2130.0	1205.7	924.3	-464.0	-198.4	-265.6	-330.0	-132.5	-197.5
II.2010	1960.8	1260.7	700.1	2297.1	1531.6	765.5	2154.6	1441.9	712.7	-336.3	-270.9	-65.4	-193.8	-181.2	-12.6
III.2010	2208.9	1289.9	919.0	2962.0	1777.4	1184.6	2791.3	1691.2	1100.1	-753.1	-487.5	-265.6	-582.4	-401.3	-181.1
I - III.2010	5969.7	3623.8	2345.9	7523.1	4580.6	2942.5	7075.9	4338.8	2737.1	-1553.4	-956.8	-596.6	-1106.2	-715.0	-391.2
IV.2010	2309.0	1323.4	985.6	3063.4	1663.4	1400.0	2884.6	1582.2	1302.4	-754.4	-340.0	-414.4	-575.6	-258.8	-316.8
V.2010	2364.8	1461.5	903.3	3215.7	1847.8	1367.9	3018.4	1750.7	1267.7	-850.9	-386.3	-464.6	-653.6	-289.2	-364.4
VI.2010	2757.5	1640.9	1116.6	3259.0	1912.9	1346.1	3060.3	1813.9	1246.4	-501.5	-272.0	-229.5	-302.8	-173.0	-129.8
IV - VI.2010	7431.3	4425.8	3005.5	9538.1	5424.1	4114.0	8963.3	5146.8	3816.5	-2106.8	-998.3	-1108.5	-1532.0	-721.0	-811.0
I - VI.2010	13401.0	8049.6	5351.4	17061.2	10004.7	7056.5	16039.2	9485.6	6553.6	-3660.2	-1955.1	-1705.1	-2638.2	-1436.0	-1202.2
VII.2010	2961.2	1919.4	1041.8	3260.3	1830.4	1429.9	3051.7	1733.9	1317.8	-299.1	89.0	-388.1	-90.5	185.5	-276.0
VIII.2010	2842.0	1774.5	1067.5	2987.3	1750.3	1237.0	2809.2	1660.5	1148.7	-145.3	24.2	-169.5	32.8	114.0	-81.2
IX.2010	2803.9	1682.0	1121.9	3164.3	1899.0	1265.3	2978.1	1804.5	1173.6	-360.4	-217.0	-143.4	-174.2	-122.5	-51.7
VII-IX.2010	8607.1	5375.9	3231.2	9411.9	5479.7	3932.2	8839.0	5198.9	3640.1	-804.8	-103.8	-701.0	-231.9	177.0	-408.9
I - IX.2010	22008.1	13425.5	8582.6	26473.1	15484.4	10988.7	24878.2	14684.5	10193.7	-4465.0	-2058.9	-2406.1	-2870.1	-1259.0	-1611.1
X.2010	2839.3	1791.5	1047.8	3425.4	2050.7	1374.7	3214.1	1939.5	1274.6	-586.1	-259.2	-326.9	-374.8	-148.0	-226.8
XI.2010	2832.5	1733.8	1098.7	3872.5	2308.1	1564.4	3639.9	2192.7	1447.2	-1040.0	-574.3	-465.7	-807.4	-458.9	-348.5
I-XI.2010	27679.9	16950.8	10729.1	33771.0	19843.2	13927.8	31732.2	18816.7	12915.5	-6091.1	-2892.4	-3198.7	-4052.3	-1865.9	-2186.4

¹ Data are preliminary as of 07.01.2011.

² By data of BNB for the transport costs.



Table 1.2

GROWTH OF EXPORTS AND IMPORTS FOR THE PERIOD JANUARY - NOVEMBER 2010¹ COMPARED TO THE SAME MONTH OF THE PREVIOUS YEAR

(Per cent)

Months	Exports - FOB			Imports - CIF			Imports - FOB		
	Total	EU	Non EU	Total	EU	Non EU	Total	EU	Non EU
I	13.1	-3.6	51.7	-5.8	-10.7	1.4	-5.2	-10.6	3.0
II	11.3	3.2	29.6	-11.3	0.1	-27.8	-11.5	-0.6	-27.7
III	19.7	10.0	36.7	0.7	0.5	0.9	0.5	0.8	0.1
I - III	14.8	3.3	38.7	-5.2	-3.0	-8.4	-5.1	-3.1	-8.2
IV	41.8	32.3	56.9	13.1	5.9	22.9	13.1	6.1	22.8
V	33.5	29.7	40.1	14.9	12.3	18.7	14.7	12.2	18.4
VI	41.0	36.1	49.1	16.4	10.2	26.5	16.2	10.3	26.2
IV - VI	38.8	32.8	48.6	14.8	9.6	22.6	14.7	9.6	22.4
I - VI	27.0	17.7	44.1	5.0	3.4	7.4	5.0	3.4	7.4
VII	47.1	34.7	77.3	16.3	10.0	25.5	15.6	9.9	24.1
VIII	48.0	48.5	47.2	15.7	19.6	10.6	15.9	19.6	11.0
IX	37.2	22.6	67.1	15.2	10.1	23.7	15.1	10.2	23.6
VII - IX	44.0	34.7	62.8	15.7	12.9	19.8	15.5	12.9	19.5
I - IX	33.1	23.9	50.6	8.6	6.6	11.6	8.5	6.6	11.5
X	21.1	20.2	22.7	11.8	11.4	12.5	11.6	11.1	12.5
XI	33.3	26.0	46.6	39.2	35.6	45.0	39.1	35.8	44.5
I - XI	31.8	23.7	46.9	11.7	9.8	14.6	11.7	9.8	14.5



Table 2
EXPORTS, IMPORTS AND TRADE BALANCE WITH MAIN NON EU PARTNER COUNTRIES¹
FOR THE PERIOD JANUARY - NOVEMBER 2009 AND 2010²

Countries	Exports - FOB			Imports - CIF			Trade balance - FOB/CIF	
	2009	2010	Growth - %	2009	2010	Growth - %	2009	2010
	Million Levs			Million Levs			Million Levs	
Third countries -total	7301.3	10729.1	46.9	12150.2	13927.8	14.6	-4848.9	-3198.7
Albania	112.7	105.8	-6.1	8.1	21.3	163.0	104.6	84.5
Bosnia and Herzegovina	73.7	55.3	-25.0	8.1	11.9	46.9	65.6	43.4
Brazil	22.9	45.5	98.7	268.8	144.0	-46.4	-245.9	-98.5
Canada	57.5	48.4	-15.8	86.4	57.0	-34.0	-28.9	-8.6
China	143.1	344.3	140.6	828.7	872.9	5.3	-685.6	-528.6
Croatia	127.5	152.7	19.8	64.7	63.9	-1.2	62.8	88.8
Egypt	191.4	189.0	-1.3	41.6	145.1	248.8	149.8	43.9
Georgia	169.4	246.1	45.3	357.5	293.9	-17.8	-188.1	-47.8
India	32.1	68.4	113.1	92.1	88.7	-3.7	-60.0	-20.3
Indonesia	28.6	25.4	-11.2	30.3	30.6	1.0	-1.7	-5.2
Iran	48.6	82.5	69.8	13.1	9.7	-26.0	35.5	72.8
Israel	71.1	140.6	97.7	75.1	179.1	138.5	-4.0	-38.5
Japan	25.8	30.3	17.4	143.4	114.6	-20.1	-117.6	-84.3
Kazakhstan	31.0	37.3	20.3	140.9	11.2	-92.1	-109.9	26.1
Reepublic of Korea	34.6	181.5	424.6	89.5	108.5	21.2	-54.9	73.0
Norway	41.6	42.2	1.4	40.3	15.2	-62.3	1.3	27.0
Peru	1.2	8.4	600.0	197.1	319.6	62.2	-195.9	-311.2
Russian Federation	527.3	807.2	53.1	4064.6	5420.2	33.4	-3537.3	-4613.0
Serbia	652.3	982.6	50.6	250.4	361.0	44.2	401.9	621.6
Singapore	388.7	358.7	-7.7	17.2	12.8	-25.6	371.5	345.9
South Africa	9.6	13.1	36.5	71.6	18.9	-73.6	-62.0	-5.8
Switzerland	151.2	179.4	18.7	276.6	304.5	10.1	-125.4	-125.1
Syria	113.8	148.9	30.8	67.0	54.6	-18.5	46.8	94.3
Taiwan	20.3	35.5	74.9	76.8	104.5	36.1	-56.5	-69.0
The former Yugoslav Rep.of Macedonia	423.5	578.2	36.5	320.5	455.2	42.0	103.0	123.0
Turkey	1480.4	2325.1	57.1	1670.7	1850.3	10.7	-190.3	474.8
Ukraine	176.9	360.9	104.0	1414.7	1395.3	-1.4	-1237.8	-1034.4
United Arab Emirates	85.3	60.9	-28.6	25.7	33.7	31.1	59.6	27.2
USA	327.8	359.9	9.8	265.5	243.0	-8.5	62.3	116.9
Viet Nam	18.1	37.9	109.4	68.0	53.2	-21.8	-49.9	-15.3

¹ Partner country:

- In case of exports (or dispatches) is the country (or Member State) of final destination of the goods
- In case of imports (or arrivals) is the country (or Member State) of consignment of the goods.

² Data are preliminary as of 07.01.2011.



Table 3

EXPORTS, IMPORTS AND TRADE BALANCE WITH NON EU COUNTRIES BY SECTIONS OF SITC, rev.4
FOR THE PERIOD JANUARY - NOVEMBER 2009 AND 2010¹

Sections by SITC	Exports - FOB			Imports - CIF			Trade balance - FOB/CIF	
	2009	2010	Growth - %	2009	2010	Growth - %	2009	2010
	Million Levs			Million Levs			Million Levs	
Third countries -total	7301.3	10729.1	46.9	12150.2	13927.8	14.6	-4848.9	-3198.7
Food and live animals	486.1	721.8	48.5	576.3	511.2	-11.3	-90.2	210.6
Beverages and tobacco	274.7	354.9	29.2	123.7	139.0	12.4	151.0	215.9
Crude materials, inedible (except fuel)	628.6	995.1	58.3	1554.0	1801.7	15.9	-925.4	-806.6
Mineral fuel, lubricants and related materials	1801.9	2744.7	52.3	5162.9	6380.2	23.6	-3361.0	-3635.5
Animals and vegetable oils, fats and waxes	41.9	44.0	5.0	40.5	40.8	0.7	1.4	3.2
Chemical and related products n.e.c.	960.5	1316.8	37.1	692.0	788.5	13.9	268.5	528.3
Manufactured goods classified chiefly by material	1589.9	2428.5	52.7	1753.6	2000.1	14.1	-163.7	428.4
Machinery and transport equipment	978.8	1269.7	29.7	1656.5	1663.6	0.4	-677.7	-393.9
Miscellaneous manufactured articles	521.7	836.6	60.4	580.3	581.9	0.3	-58.6	254.7
Commodities and transactions n.e.c.	17.2	17.0	-1.2	10.4	20.8	100.0	6.8	-3.8

¹ Data are preliminary as of 07.01.2011.