

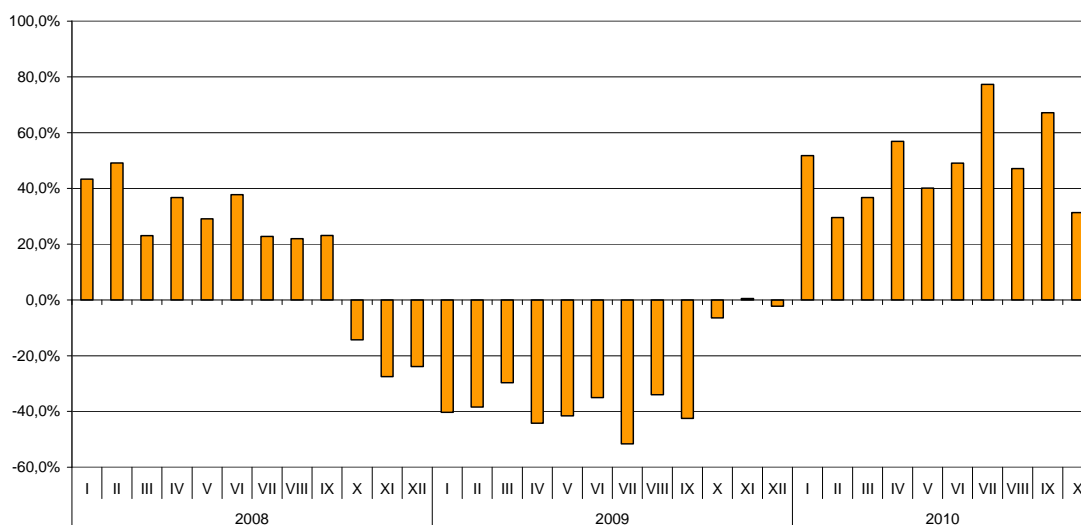


BULGARIAN TRADE WITH THIRD COUNTRIES FOR THE PERIOD JANUARY - OCTOBER 2010 (PRELIMINARY DATA)

In the period January - October 2010 the Bulgarian exports to third countries increased by 47% compared to the corresponding period of the previous year and amounted to 9.6 billion levs (Table 1.1 and 1.2). The main trade partners of Bulgaria were Turkey, Serbia, Russia, the former Yugoslav Republic of Macedonia, Singapore, USA and China, that formed 53.8% of the total exports to non EU countries (Table 2). The exported goods to China increased by 212% and those to Turkey by 64.2%. The exports to Serbia and Russia reported growths by 58.3% and by 51.9% respectively, to the former Yugoslav Republic of Macedonia by 33.4% and to USA by 6.6%. The exports to Peru, Republic of Korea, India, Brazil and Viet Nam increased significantly. Falls were reported on the exports to United Arab Emirates, Bosnia and Herzegovina, Canada, Indonesia and Albania.

In October 2010 the exports to third countries increased by 22.7% compared to the corresponding month of the previous year and were over 1 billion levs.

**Figure 1. Nominal growth of exports to non EU countries for the period
2008 - 2010
(Compared to the same month of the previous year)**

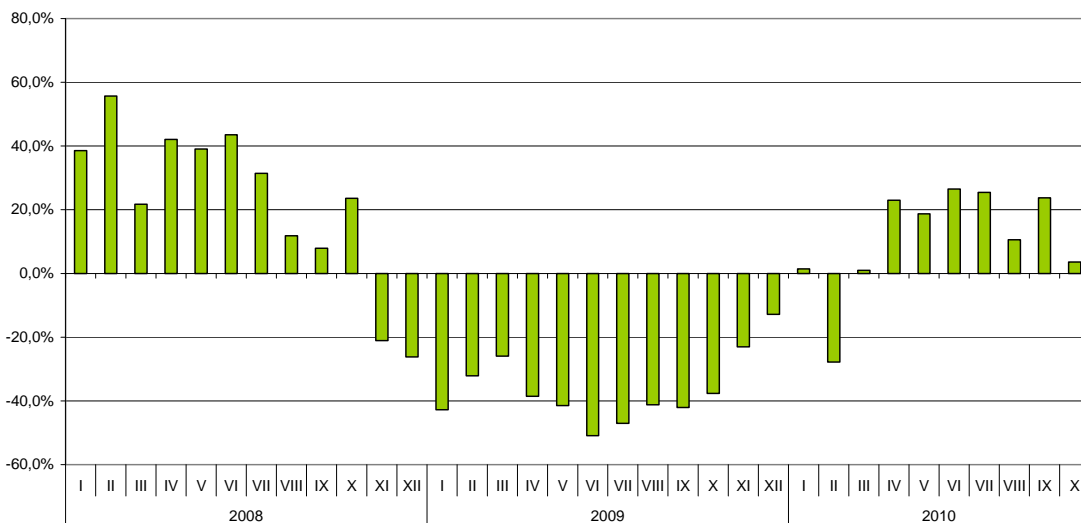




Bulgarian **imports from third countries** in the first ten months of 2010 increased by 11.7% compared to the corresponding period of the previous year and **amounted to 12.4 billion levs** (Tables 1.1 and 1.2). The most significant growths were reported on the imports from Israel, Albania and Egypt (Table 2). The imports from Serbia increased by 46.5% and from Bosnia and Herzegovina by 45.2%. The largest decreases were observed in the imports from Kazakhstan, South Africa and Norway.

In October 2010 the Bulgarian imports from third countries increased by 12.5% compared to the corresponding month of the previous year and **amounted to 1.4 billion levs**.

Figure 2. Nominal growth of imports from non EU countries for the period 2008 - 2010 (Compared to the same month of the previous year)



The foreign trade balance of Bulgaria (export FOB - import CIF) with third countries in the period January - October 2010 was negative and amounted to 2.7 billion levs (Table 1.1).

In October 2010 the foreign trade balance of Bulgaria (export FOB - import CIF) with third countries was negative and amounted to 326.9 million levs.



The **exports** of Bulgaria to **third countries**, distributed according to the **Standard International Trade Classification**, increased in all the sections in the first ten months of 2010 compared to the corresponding period of 2009, except in one section - “Animals and vegetable oils, fats and waxes” (Table 3). The largest growths were recorded in the sections “Crude materials, inedible (except fuel)”¹, “Miscellaneous manufactured articles”² and “Manufactured goods classified chiefly by material”³.

The largest growths in **imports** from **third countries** were reported in section “Mineral fuels, lubricants and related materials” and the most significant falls were in section “Food and live animals”.

Bulgarian trade with third countries and EU - total

In the period January - October 2010 **the total value of the exported goods** was for **24.8 billion levs** and compared to the corresponding period of 2009 the exports increased by 31.6% (Table 1.1 and 1.2).

In October 2010 **the exports amounted to 2.8 billion levs** and increased by 20.9% compared to the corresponding month of 2009.

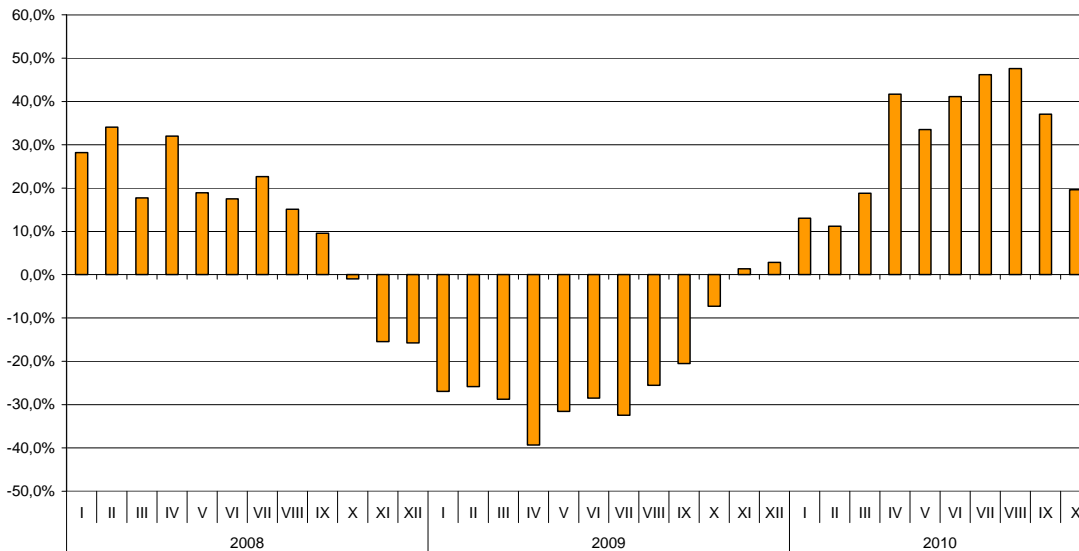
¹ The section includes the following divisions: raw hides, skins and furskins; oil-seeds and oleaginous fruits; crude rubber; cork and wood; pulp and waste paper; textile fibres and their wastes; crude fertilizers and crude minerals; metalliferous ores and metal scrap; crude animal and vegetable materials, n.e.s.

² The section includes the following divisions: Prefabricated buildings; sanitary, plumbing, heating and lightning fixtures and fittings, n.e.s. ; Furniture and parts thereof; bedding, mattresses, mattress supports, cushions and similar stuffed furnishings; Travel goods, handbags and similar containers; Articles of apparel and clothing accessories; Footwear; Professional, scientific and controlling instruments and apparatus, n.e.s.; . Photographic apparatus, equipment and supplies and optical goods, n.e.s.; watches and clocks; Miscellaneous manufactured articles, n.e.s.

³ The section includes the following divisions: leather, leather manufactures, n.e.s. and dressed furskins; rubber manufactures, n.e.s; cork and wood manufactures (excluding furniture); paper, paperboard and articles of paper pulp, of paper or of paperboard; textile yarn, fabrics, made-up articles, n.e.s., and related products; non-metallic mineral manufactures, n.e.s.; iron and steel; non-ferrous metals; manufactures of metals, n.e.s.



Figure 3. Nominal growth of exports for the period 2008 - 2010
(Compared to the same month of the previous year)



The total imported goods in the period January - October 2010 were for **29.9 billion levs (at CIF prices)** or by **8.9% more** than in the corresponding period of the previous year (Table 1.1 and 1.2).

In October 2010 the total imports increased by 11.3% compared to the corresponding period of the previous year and amounted to 3.4 billion levs.

The total foreign trade balance (exports FOB - import CIF) was negative in the period January - October 2010 and amounted to 5 billion levs which was over 3.5 billion levs less than the balance in the first ten months of 2009 (Table 1.1 and 1.2). At FOB/FOB prices (after elimination of transport and insurance costs on imports) the negative balance in the period January - October 2010 amounted to 3.2 billion levs.

In October 2010 the total foreign trade balance (exports FOB - import CIF) was negative and amounted to **575 million levs** while at FOB/FOB prices was also negative and reached to **373.2 million levs**.

EXPORTS, IMPORTS AND TRADE BALANCE FOR THE PERIOD JANUARY - OCTOBER 2009 AND 2010¹ BY MONTHS

(Million Levs)

Months	Exports - FOB			Imports - CIF			Imports - FOB ²			Trade balance - FOB/CIF			Trade balance - FOB/FOB ²		
	Total	EU	Non EU	Total	EU	Non EU	Total	EU	Non EU	Total	EU	Non EU	Total	EU	Non EU
I.2009	1592,0	1113,0	479,0	2402,5	1423,7	978,8	2246,0	1348,8	897,2	-810,5	-310,7	-499,8	-654,0	-235,8	-418,2
II.2009	1761,9	1221,6	540,3	2591,2	1530,8	1060,4	2435,9	1450,3	985,6	-829,3	-309,2	-520,1	-674,0	-228,7	-445,3
III.2009	1844,9	1172,8	672,1	2942,5	1769,0	1173,5	2777,2	1678,6	1098,6	-1097,6	-596,2	-501,4	-932,3	-505,8	-426,5
I - III.2009	5198,8	3507,4	1691,4	7936,2	4723,5	3212,7	7459,1	4477,7	2981,4	-2737,4	-1216,1	-1521,3	-2260,3	-970,3	-1290,0
IV.2009	1628,8	1000,5	628,3	2709,2	1570,4	1138,8	2551,2	1490,9	1060,3	-1080,4	-569,9	-510,5	-922,4	-490,4	-432,0
V.2009	1771,5	1126,6	644,9	2797,8	1645,2	1152,6	2630,8	1560,4	1070,4	-1026,3	-518,6	-507,7	-859,3	-433,8	-425,5
VI.2009	1955,0	1205,9	749,1	2799,7	1735,3	1064,4	2632,6	1644,9	987,7	-844,7	-529,4	-315,3	-677,6	-439,0	-238,6
IV - VI.2009	5355,3	3333,0	2022,3	8306,7	4950,9	3355,8	7814,6	4696,2	3118,4	-2951,4	-1617,9	-1333,5	-2459,3	-1363,2	-1096,1
I - VI.2009	10554,1	6840,4	3713,7	16242,9	9674,4	6568,5	15273,7	9173,9	6099,8	-5688,8	-2834,0	-2854,8	-4719,6	-2333,5	-2386,1
VII.2009	2012,9	1425,3	587,6	2803,8	1664,1	1139,7	2640,0	1577,7	1062,3	-790,9	-238,8	-552,1	-627,1	-152,4	-474,7
VIII.2009	1920,4	1195,0	725,4	2582,8	1463,9	1118,9	2423,3	1388,6	1034,7	-662,4	-268,9	-393,5	-502,9	-193,6	-309,3
IX.2009	2043,4	1372,1	671,3	2747,3	1724,4	1022,9	2587,2	1637,9	949,3	-703,9	-352,3	-351,6	-543,8	-265,8	-278,0
VII-IX.2009	5976,7	3992,4	1984,3	8133,9	4852,4	3281,5	7650,5	4604,2	3046,3	-2157,2	-860,0	-1297,2	-1673,8	-611,8	-1062,0
I - IX.2009	16530,8	10832,8	5698,0	24376,8	14526,8	9850,0	22924,2	13778,1	9146,1	-7846,0	-3694,0	-4152,0	-6393,4	-2945,3	-3448,1
X.2009	2344,5	1490,4	854,1	3062,9	1841,4	1221,5	2879,9	1746,5	1133,4	-718,4	-351,0	-367,4	-535,4	-256,1	-279,3
I - X.2009	18875,3	12323,2	6552,1	27439,7	16368,2	11071,5	25804,1	15524,6	10279,5	-8564,4	-4045,0	-4519,4	-6928,8	-3201,4	-3727,4
I.2010	1800,0	1073,2	726,8	2264,0	1271,6	992,4	2130,0	1205,7	924,3	-464,0	-198,4	-265,6	-330,0	-132,5	-197,5
II.2010	1960,8	1260,7	700,1	2297,1	1531,6	765,5	2154,6	1441,9	712,7	-336,3	-270,9	-65,4	-193,8	-181,2	-12,6
III.2010	2208,9	1289,9	919,0	2962,0	1777,4	1184,6	2791,3	1691,2	1100,1	-753,1	-487,5	-265,6	-582,4	-401,3	-181,1
I - III.2010	5969,7	3623,8	2345,9	7523,1	4580,6	2942,5	7075,9	4338,8	2737,1	-1553,4	-956,8	-596,6	-1106,2	-715,0	-391,2
IV.2010	2309,0	1323,4	985,6	3063,4	1663,4	1400,0	2884,6	1582,2	1302,4	-754,4	-340,0	-414,4	-575,6	-258,8	-316,8
V.2010	2364,8	1461,5	903,3	3215,7	1847,8	1367,9	3018,4	1750,7	1267,7	-850,9	-386,3	-464,6	-653,6	-289,2	-364,4
VI.2010	2757,5	1640,9	1116,6	3259,0	1912,9	1346,1	3060,3	1813,9	1246,4	-501,5	-272,0	-229,5	-302,8	-173,0	-129,8
IV - VI.2010	7431,3	4425,8	3005,5	9538,1	5424,1	4114,0	8963,3	5146,8	3816,5	-2106,8	-998,3	-1108,5	-1532,0	-721,0	-811,0
I - VI.2010	13401,0	8049,6	5351,4	17061,2	10004,7	7056,5	16039,2	9485,6	6553,6	-3660,2	-1955,1	-1705,1	-2638,2	-1436,0	-1202,2
VII.2010	2961,2	1919,4	1041,8	3260,3	1830,4	1429,9	3051,7	1733,9	1317,8	-299,1	89,0	-388,1	-90,5	185,5	-276,0
VIII.2010	2842,0	1774,5	1067,5	2987,3	1750,3	1237,0	2809,2	1660,5	1148,7	-145,3	24,2	-169,5	32,8	114,0	-81,2
IX.2010	2803,9	1682,0	1121,9	3164,3	1899,0	1265,3	2978,1	1804,5	1173,6	-360,4	-217,0	-143,4	-174,2	-122,5	-51,7
VII-IX.2010	8607,1	5375,9	3231,2	9411,9	5479,7	3932,2	8839,0	5198,9	3640,1	-804,8	-103,8	-701,0	-231,9	177,0	-408,9
I - IX.2010	22008,1	13425,5	8582,6	26473,1	15484,4	10988,7	24878,2	14684,5	10193,7	-4465,0	-2058,9	-2406,1	-2870,1	-1259,0	-1611,1
X.2010	2834,6	1786,8	1047,8	3409,6	2034,9	1374,7	3207,8	1933,2	1274,6	-575,0	-248,1	-326,9	-373,2	-146,4	-226,8
I - X.2010	24842,7	15212,3	9630,4	29882,7	17519,3	12363,4	28086,0	16617,7	11468,3	-5040,0	-2307,0	-2733,0	-3243,3	-1405,4	-1837,9

¹ Data are preliminary as of 10.12.2010.

² By data of BNB for the transport costs.



Table 1.2

GROWTH OF EXPORTS AND IMPORTS FOR THE PERIOD JANUARY - OCTOBER 2010¹ COMPARED TO THE SAME MONTH OF THE PREVIOUS YEAR

(Per cent)

Months	Exports - FOB			Imports - CIF			Imports - FOB		
	Total	EU	Non EU	Total	EU	Non EU	Total	EU	Non EU
I	13,1	-3,6	51,7	-5,8	-10,7	1,4	-5,2	-10,6	3,0
II	11,3	3,2	29,6	-11,3	0,1	-27,8	-11,5	-0,6	-27,7
III	19,7	10,0	36,7	0,7	0,5	0,9	0,5	0,8	0,1
I - III	14,8	3,3	38,7	-5,2	-3,0	-8,4	-5,1	-3,1	-8,2
IV	41,8	32,3	56,9	13,1	5,9	22,9	13,1	6,1	22,8
V	33,5	29,7	40,1	14,9	12,3	18,7	14,7	12,2	18,4
VI	41,0	36,1	49,1	16,4	10,2	26,5	16,2	10,3	26,2
IV - VI	38,8	32,8	48,6	14,8	9,6	22,6	14,7	9,6	22,4
I - VI	27,0	17,7	44,1	5,0	3,4	7,4	5,0	3,4	7,4
VII	47,1	34,7	77,3	16,3	10,0	25,5	15,6	9,9	24,1
VIII	48,0	48,5	47,2	15,7	19,6	10,6	15,9	19,6	11,0
IX	37,2	22,6	67,1	15,2	10,1	23,7	15,1	10,2	23,6
VII - IX	44,0	34,7	62,8	15,7	12,9	19,8	15,5	12,9	19,5
I - IX	33,1	23,9	50,6	8,6	6,6	11,6	8,5	6,6	11,5
X	20,9	19,9	22,7	11,3	10,5	12,5	11,4	10,7	12,5
I - X	31,6	23,4	47,0	8,9	7,0	11,7	8,8	7,0	11,6



Table2

EXPORTS, IMPORTS AND TRADE BALANCE WITH MAIN NON EU PARTNER COUNTRIES¹
FOR THE PERIOD JANUARY - OCTOBER 2009 AND 2010²

(Million Levs)

Countries	Exports - FOB			Imports - CIF			Trade balance - FOB/CIF	
	2009	2010	Growth - %	2009	2010	Growth - %	2009	2010
Total - third countries	6552,1	9630,4	47,0	11071,5	12363,4	11,7	-4519,4	-2733,0
Albania	102,2	97,0	-5,1	6,7	18,2	171,6	95,5	78,8
Bosnia and Herzegovina	69,3	50,2	-27,6	7,3	10,6	45,2	62,0	39,6
Brazil	19,7	42,4	115,2	236,5	134,9	-43,0	-216,8	-92,5
Canada	53,9	44,9	-16,7	81,7	55,3	-32,3	-27,8	-10,4
China	100,6	313,9	212,0	764,1	789,7	3,4	-663,5	-475,8
Croatia	120,6	144,0	19,4	60,0	58,5	-2,5	60,6	85,5
Egypt	168,8	170,9	1,2	35,9	93,4	160,2	132,9	77,5
Georgia	149,1	216,4	45,1	332,5	246,3	-25,9	-183,4	-29,9
India	27,7	62,2	124,5	68,5	81,8	19,4	-40,8	-19,6
Indonesia	26,5	23,8	-10,2	28,7	27,3	-4,9	-2,2	-3,5
Iran	47,1	80,6	71,1	12,0	9,3	-22,5	35,1	71,3
Israel	67,4	99,9	48,2	49,3	174,0	252,9	18,1	-74,1
Japan	24,2	27,8	14,9	136,2	104,9	-23,0	-112,0	-77,1
Kazakhstan	28,0	31,0	10,7	100,6	9,5	-90,6	-72,6	21,5
Republic of Korea	31,4	168,7	437,3	80,4	84,4	5,0	-49,0	84,3
Norway	37,7	38,1	1,1	39,0	13,2	-66,2	-1,3	24,9
Peru	0,9	8,0	788,9	193,5	313,6	62,1	-192,6	-305,6
Russian Federation	464,9	706,3	51,9	3717,2	4747,3	27,7	-3252,3	-4041,0
Serbia	554,3	877,2	58,3	221,2	324,0	46,5	333,1	553,2
Singapore	347,5	357,2	2,8	16,4	11,4	-30,5	331,1	345,8
South Africa	8,3	11,7	41,0	70,0	16,9	-75,9	-61,7	-5,2
Switzerland	135,0	157,3	16,5	251,4	279,4	11,1	-116,4	-122,1
Syria	108,3	143,8	32,8	62,6	52,8	-15,7	45,7	91,0
Taiwan	18,0	32,3	79,4	70,8	96,7	36,6	-52,8	-64,4
The former Yugoslav Rep. of Macedonia	385,0	513,7	33,4	289,5	412,1	42,3	95,5	101,6
Turkey	1282,4	2105,8	64,2	1512,1	1652,5	9,3	-229,7	453,3
Ukraine	157,0	275,7	75,6	1281,7	1235,5	-3,6	-1124,7	-959,8
United Arab Emirates	82,6	57,7	-30,1	23,1	28,3	22,5	59,5	29,4
USA	292,0	311,3	6,6	246,1	222,3	-9,7	45,9	89,0
Viet Nam	16,5	34,6	109,7	65,2	50,6	-22,4	-48,7	-16,0

¹ Partner country:

- In case of exports (or dispatches) is the country (or Member State) of final destination of the goods
- In case of imports (or arrivals) is the country (or Member State) of consignment of the goods.

² Data are preliminary as of 10.12.2010.



Table 3

**EXPORTS, IMPORTS AND TRADE BALANCE WITH NON EU COUNTRIES BY SECTIONS OF SITC, rev.4
FOR THE PERIOD JANUARY - OCTOBER 2009 AND 2010¹**

(Million Levs)

Sections by SITC	Exports - FOB			Imports - CIF			Trade balance - FOB/CIF	
	2009	2010	Growth - %	2009	2010	Growth - %	2009	2010
Total - third countries	6552,1	9630,4	47,0	11071,5	12363,4	11,7	-4519,4	-2733,0
Food and live animals	446,2	641,0	43,7	534,0	468,3	-12,3	-87,8	172,7
Beverages and tobacco	235,0	309,7	31,8	118,3	128,7	8,8	116,7	181,0
Crude materials, inedible (except fuel)	557,0	911,6	63,7	1430,2	1599,1	11,8	-873,2	-687,5
Mineral fuel, lubricants and related materials	1633,2	2440,4	49,4	4677,4	5583,6	19,4	-3044,2	-3143,2
Animals and vegetable oils, fats and waxes	38,0	37,4	-1,6	37,8	36,4	-3,7	0,2	1,0
Chemical and related products n.e.c.	863,8	1170,8	35,5	617,9	702,1	13,6	245,9	468,7
Manufactured goods classified chiefly by material	1407,2	2198,7	56,2	1585,3	1797,7	13,4	-178,1	401,0
Machinery and transport equipment	872,7	1139,0	30,5	1529,5	1504,3	-1,6	-656,8	-365,3
Miscellaneous manufactured articles	483,6	765,0	58,2	532,2	527,7	-0,8	-48,6	237,3
Commodities and transactions n.e.c.	15,4	16,8	9,1	8,9	15,5	74,2	6,5	1,3

¹ Data are preliminary as of 10.12.2010.