

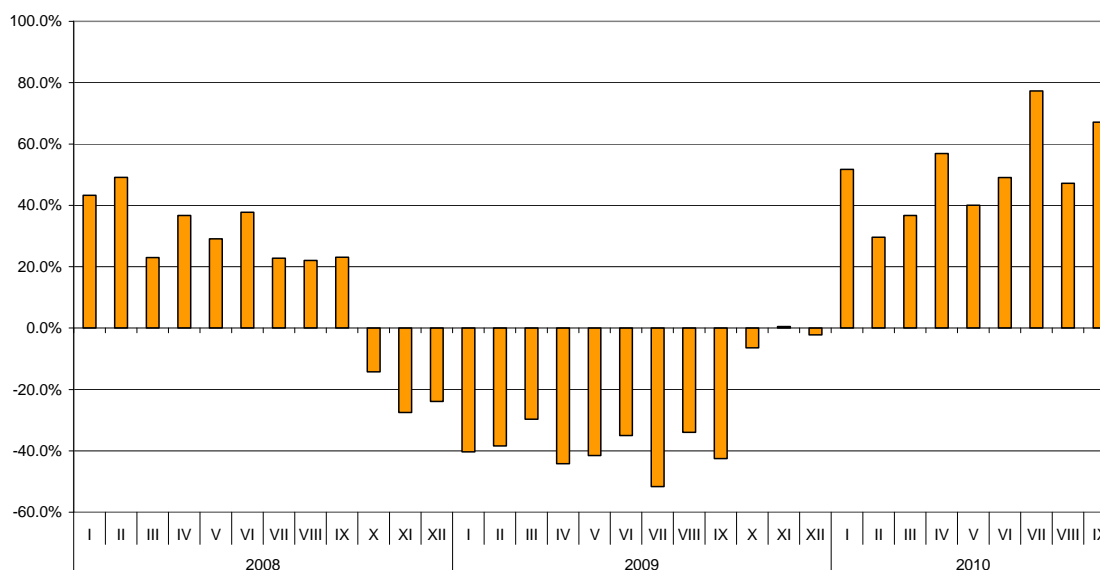


BULGARIAN TRADE WITH THIRD COUNTRIES FOR THE PERIOD JANUARY - SEPTEMBER 2010 (PRELIMINARY DATA)

In the period January - September 2010 the Bulgarian exports to third countries increased by 50.6 % compared to the corresponding period of the previous year and amounted to 8.6 billion leva (Table 1.1 and 1.2). The main trade partners of Bulgaria were Turkey, Serbia, Russia, the Former Yugoslav Republic of Macedonia, Singapore, USA and China, that formed over 54% of the total exports to non EU countries (Table 2). The exported goods to China increased by 256.4% and those to Serbia by 72%. The exports to Turkey and Russia reported growth by 65.2%. and 53.9% respectively, to the former Yugoslav Republic of Macedonia by 33.1% and to Singapore by 16%. The exports to Peru, Republic of Korea, Brazil and Viet Nam increased significantly. Fall was reported on the exports to United Arab Emirates, Bosnia and Herzegovina, Indonesia, Albania and Norway.

In September 2010 the exports to third countries increased by 67.1% compared to the corresponding month of the previous year and was over 1 billion leva.

**Nominal growth of exports to non EU countries for the period 2008 - 2010
(compared to the same month of the previous year)**

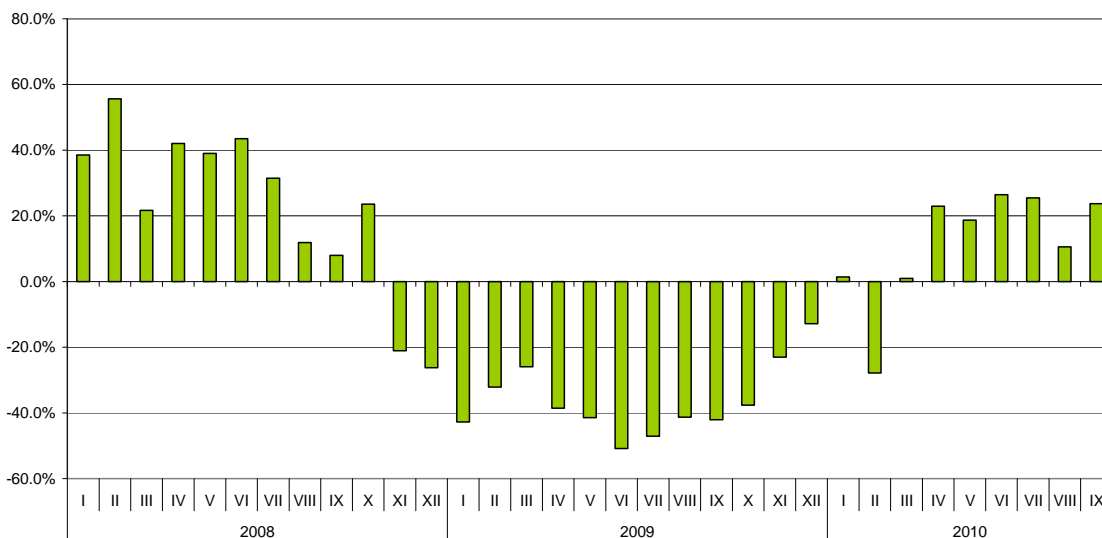




Bulgarian **imports from third** countries in the first nine months of 2010 increased by 11.6% compared to the corresponding period of the previous year and **amounted to 11 billion levs** (Tables 1.1 and 1.2). The most significant growths were reported on the imports from Israel, Egypt, Albania and Peru (Table 2). The imports from Serbia increased by 48.1% and from Republic of Macedonia by 43.2%. The largest decrease was observed in the imports from Kazakhstan, South Africa and Norway.

In September 2010 the Bulgarian imports from third countries increased by 23.7% compared to the corresponding month of the previous year and **amounted to 1.3 billion levs**.

Nominal growth of imports from non EU countries for the period 2008 - 2010
(compared to the same month of the previous year)



The foreign trade balance of Bulgaria (export FOB - import CIF) with third countries in the period January - September 2010 was negative and amounted to 2.4 billion levs (Table 1.1).

In September 2010 the foreign trade balance of Bulgaria (export FOB - import CIF) with third countries was negative and amounted to 143.4 million levs.



The **exports** of Bulgaria to **third countries**, distributed according to the **Standard International Trade Classification**, increased in all the sections in the first nine months of 2010 compared to the corresponding period of 2009 (Table 3). The largest growth was recorded in the sections “Crude materials, inedible (except fuel)”¹ and “Manufactured goods classified chiefly by material”².

The largest growths in **imports** from **third countries** were reported in section “Crude materials, inedible (except fuel)”¹ and the most notable fall was in section “Food and live animals”.

Bulgarian trade with third countries and EU - total

In the period January - September 2010 **the total value of the exported goods** was for **22 billion levs** and compared to the corresponding period of 2009 the exports increased by 32.9% (Table 1.1 and 1.2).

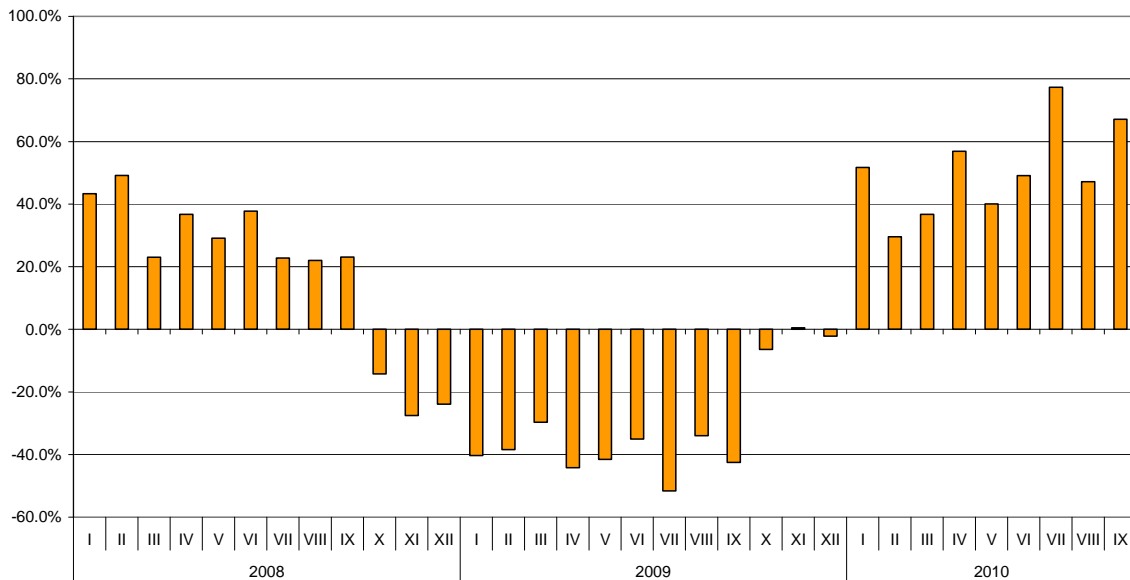
In September 2010 **the exports amounted to 2.8 billion levs** and increased by 37.1% compared to the corresponding period of 2009.

¹ The section includes the following divisions: raw hides, skins and furskins; oil-seeds and oleaginous fruits; crude rubber; cork and wood; pulp and waste paper; textile fibres and their wastes; crude fertilizers and crude minerals; metalliferous ores and metal scrap; crude animal and vegetable materials, n.e.s.

² The section includes the following divisions: leather, leather manufactures, n.e.s. and dressed furskins; rubber manufactures, n.e.s.; cork and wood manufactures (excluding furniture); paper, paperboard and articles of paper pulp, of paper or of paperboard; textile yarn, fabrics, made-up articles, n.e.s., and related products; non-metallic mineral manufactures, n.e.s.; iron and steel; non-ferrous metals; manufactures of metals, n.e.s.



**Nominal growth of exports to non EU countries for the period 2008 - 2010
(compared to the same month of the previous year)**

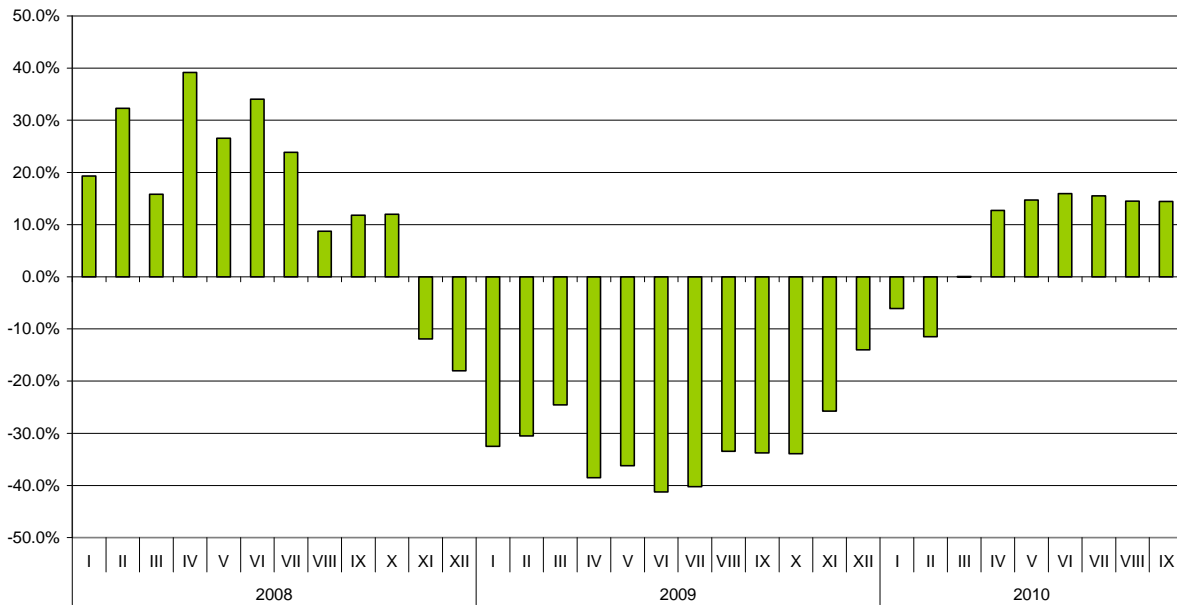


The total imported goods in the period January - September 2010 were **for 26.4 billion leva (at CIF prices)** or **by 8.1% more** than in the corresponding period of the previous year (Table 1.1 and 1.2).

In September 2010 the total imports increased by 14.4% compared to the corresponding period of the previous year and amounted to 3.1 billion leva.



**Nominal growth of imports for the period 2008 - 2010
(compared to the same month of the previous year)**



The total foreign trade balance (exports FOB - import CIF) was negative in the period January -September 2010 and amounted to 4.4 billion levs which was over 3.4 billion levs less than the balance in the first nine months of 2009 (Table 1.1 and 1.2). At FOB/FOB prices (after elimination of transport and insurance costs on imports) the negative balance in the period January - September 2010 amounted to 2.8 billion levs.

In September 2010 the total foreign trade balance (**exports FOB - import CIF**) was negative and amounted to **343.1** million levs while at FOB/FOB prices was also negative and amounted to **157.4** million levs.

EXPORTS, IMPORTS AND TRADE BALANCE FOR THE PERIOD JANUARY- SEPTEMBER 2009 AND 2010¹ BY MONTHS

(Million Levs)

Months	Exports - FOB			Imports - CIF			Imports - FOB ²			Trade balance - FOB/CIF			Trade balance - FOB/FOB ²		
	Total	EU	Non EU	Total	EU	Non EU	Total	EU	Non EU	Total	EU	Non EU	Total	EU	Non EU
I.2009	1592.0	1113.0	479.0	2402.5	1423.7	978.8	2246.0	1348.8	897.2	-810.5	-310.7	-499.8	-654.0	-235.8	-418.2
II.2009	1761.9	1221.6	540.3	2591.2	1530.8	1060.4	2435.9	1450.3	985.6	-829.3	-309.2	-520.1	-674.0	-228.7	-445.3
III.2009	1844.9	1172.8	672.1	2942.5	1769.0	1173.5	2777.2	1678.6	1098.6	-1097.6	-596.2	-501.4	-932.3	-505.8	-426.5
I - III.2009	5198.8	3507.4	1691.4	7936.2	4723.5	3212.7	7459.1	4477.7	2981.4	-2737.4	-1216.1	-1521.3	-2260.3	-970.3	-1290.0
IV.2009	1628.8	1000.5	628.3	2709.2	1570.4	1138.8	2551.2	1490.9	1060.3	-1080.4	-569.9	-510.5	-922.4	-490.4	-432.0
V.2009	1771.5	1126.6	644.9	2797.8	1645.2	1152.6	2630.8	1560.4	1070.4	-1026.3	-518.6	-507.7	-859.3	-433.8	-425.5
VI.2009	1955.0	1205.9	749.1	2799.7	1735.3	1064.4	2632.6	1644.9	987.7	-844.7	-529.4	-315.3	-677.6	-439.0	-238.6
IV - VI.2009	5355.3	3333.0	2022.3	8306.7	4950.9	3355.8	7814.6	4696.2	3118.4	-2951.4	-1617.9	-1333.5	-2459.3	-1363.2	-1096.1
I - VI.2009	10554.1	6840.4	3713.7	16242.9	9674.4	6568.5	15273.7	9173.9	6099.8	-5688.8	-2834.0	-2854.8	-4719.6	-2333.5	-2386.1
VII.2009	2012.9	1425.3	587.6	2803.8	1664.1	1139.7	2640.0	1577.7	1062.3	-790.9	-238.8	-552.1	-627.1	-152.4	-474.7
VIII.2009	1920.4	1195.0	725.4	2582.8	1463.9	1118.9	2423.3	1388.6	1034.7	-662.4	-268.9	-393.5	-502.9	-193.6	-309.3
IX.2009	2043.4	1372.1	671.3	2747.3	1724.4	1022.9	2587.2	1637.9	949.3	-703.9	-352.3	-351.6	-543.8	-265.8	-278.0
VII-IX.2009	5976.7	3992.4	1984.3	8133.9	4852.4	3281.5	7650.5	4604.2	3046.3	-2157.2	-860.0	-1297.2	-1673.8	-611.8	-1062.0
I - IX.2009	16530.8	10832.8	5698.0	24376.8	14526.8	9850.0	22924.2	13778.1	9146.1	-7846.0	-3694.0	-4152.0	-6393.4	-2945.3	-3448.1
I.2010	1799.3	1072.5	726.8	2256.4	1264.0	992.4	2122.8	1198.5	924.3	-457.1	-191.5	-265.6	-323.5	-126.0	-197.5
II.2010	1959.5	1259.4	700.1	2293.5	1528.0	765.5	2151.3	1438.6	712.7	-334.0	-268.6	-65.4	-191.8	-179.2	-12.6
III.2010	2192.0	1273.0	919.0	2943.4	1758.8	1184.6	2774.0	1673.9	1100.1	-751.4	-485.8	-265.6	-582.0	-400.9	-181.1
I - III.2010	5950.8	3604.9	2345.9	7493.3	4550.8	2942.5	7048.1	4311.0	2737.1	-1542.5	-945.9	-596.6	-1097.3	-706.1	-391.2
IV.2010	2307.7	1322.1	985.6	3054.3	1654.3	1400.0	2876.2	1573.8	1302.4	-746.6	-332.2	-414.4	-568.5	-251.7	-316.8
V.2010	2364.8	1461.5	903.3	3209.6	1841.7	1367.9	3012.6	1744.9	1267.7	-844.8	-380.2	-464.6	-647.8	-283.4	-364.4
VI.2010	2759.0	1642.4	1116.6	3246.0	1899.9	1346.1	3048.2	1801.8	1246.4	-487.0	-257.5	-229.5	-289.2	-159.4	-129.8
IV - VI.2010	7431.5	4426.0	3005.5	9509.9	5395.9	4114.0	8937.0	5120.5	3816.5	-2078.4	-969.9	-1108.5	-1505.5	-694.5	-811.0
I - VI.2010	13382.3	8030.9	5351.4	17003.2	9946.7	7056.5	15985.1	9431.5	6553.6	-3620.9	-1915.8	-1705.1	-2602.8	-1400.6	-1202.2
VII.2010	2942.5	1900.7	1041.8	3239.3	1809.4	1429.9	3031.6	1713.8	1317.8	-296.8	91.3	-388.1	-89.1	186.9	-276.0
VIII.2010	2841.7	1774.2	1067.5	2974.6	1737.6	1237.0	2797.2	1648.5	1148.7	-132.9	36.6	-169.5	44.5	125.7	-81.2
IX.2010	2800.7	1678.8	1121.9	3143.8	1878.5	1265.3	2958.1	1784.5	1173.6	-343.1	-199.7	-143.4	-157.4	-105.7	-51.7
VII-IX.2010	8584.9	5353.7	3231.2	9357.7	5425.5	3932.2	8786.9	5146.8	3640.1	-772.8	-71.8	-701.0	-202.0	206.9	-408.9
I - IX.2010	21967.2	13384.6	8582.6	26360.9	15372.2	10988.7	24772.0	14578.3	10193.7	-4393.7	-1987.6	-2406.1	-2804.8	-1193.7	-1611.1

¹ Data are preliminary as of 8.11.2010.

² By data of BNB for the transport costs.



Table 1.2

GROWTH OF EXPORTS AND IMPORTS FOR THE PERIOD JANUARY - SEPTEMBER 2010¹ COMPARED TO THE SAME MONTH OF THE PREVIOUS YEAR

(Per cent)

Months	Exports - FOB			Imports - CIF			Imports - FOB		
	Total	EU	Non EU	Total	EU	Non EU	Total	EU	Non EU
I	13.0	-3.6	51.7	-6.1	-11.2	1.4	-5.5	-11.1	3.0
II	11.2	3.1	29.6	-11.5	-0.2	-27.8	-11.7	-0.8	-27.7
III	18.8	8.5	36.7	0.0	-0.6	0.9	-0.1	-0.3	0.1
I - III	14.5	2.8	38.7	-5.6	-3.7	-8.4	-5.5	-3.7	-8.2
IV	41.7	32.1	56.9	12.7	5.3	22.9	12.7	5.6	22.8
V	33.5	29.7	40.1	14.7	11.9	18.7	14.5	11.8	18.4
VI	41.1	36.2	49.1	15.9	9.5	26.5	15.8	9.5	26.2
IV - VI	38.8	32.8	48.6	14.5	9.0	22.6	14.4	9.0	22.4
I - VI	26.8	17.4	44.1	4.7	2.8	7.4	4.7	2.8	7.4
VII	46.2	33.4	77.3	15.5	8.7	25.5	14.8	8.6	24.1
VIII	48.0	48.5	47.2	15.2	18.7	10.6	15.4	18.7	11.0
IX	37.1	22.4	67.1	14.4	8.9	23.7	14.3	9.0	23.6
VII - IX	43.6	34.1	62.8	15.0	11.8	19.8	14.9	11.8	19.5
I - IX	32.9	23.6	50.6	8.1	5.8	11.6	8.1	5.8	11.5



Table 2

EXPORTS, IMPORTS AND TRADE BALANCE WITH MAIN NON EU PARTNER COUNTRIES¹
FOR THE PERIOD JANUARY - SEPTEMBER 2009 AND 2010²

(Million Levs)

Countries	Exports - FOB			Imports - CIF			Trade balance - FOB/CIF	
	2009	2010	Growth - %	2009	2010	Growth - %	2009	2010
Total - third countries	5698.0	8582.6	50.6	9850.0	10988.7	11.6	-4152.0	-2406.1
Albania	91.6	88.8	-3.1	5.6	16.0	185.7	86.0	72.8
Bosnia and Herzegovina	53.3	44.7	-16.1	6.7	10.1	50.7	46.6	34.6
Brazil	17.4	39.2	125.3	203.7	130.3	-36.0	-186.3	-91.1
Canada	37.9	40.0	5.5	79.9	52.8	-33.9	-42.0	-12.8
China	78.2	278.7	256.4	692.4	700.3	1.1	-614.2	-421.6
Croatia	110.1	135.7	23.3	55.2	43.2	-21.7	54.9	92.5
Egypt	150.7	160.6	6.6	30.4	88.6	191.4	120.3	72.0
Georgia	128.2	184.9	44.2	317.5	231.5	-27.1	-189.3	-46.6
India	24.6	57.6	134.1	60.8	74.3	22.2	-36.2	-16.7
Indonesia	23.9	21.8	-8.8	25.9	24.1	-6.9	-2.0	-2.3
Iran	45.7	79.0	72.9	10.3	8.6	-16.5	35.4	70.4
Israel	62.1	93.6	50.7	40.5	169.7	319.0	21.6	-76.1
Japan	22.5	25.1	11.6	131.0	96.7	-26.2	-108.5	-71.6
Kazakhstan	24.9	26.8	7.6	60.1	6.8	-88.7	-35.2	20.0
Republic of Korea	28.0	129.5	362.5	73.2	73.9	1.0	-45.2	55.6
Norway	33.8	33.7	-0.3	35.4	9.7	-72.6	-1.6	24.0
Peru	0.8	7.8	875.0	182.8	303.7	66.1	-182.0	-295.9
Russian Federation	399.5	615.0	53.9	3361.6	4219.1	25.5	-2962.1	-3604.1
Serbia	463.2	796.5	72.0	197.3	292.2	48.1	265.9	504.3
Singapore	306.8	355.8	16.0	15.0	8.7	-42.0	291.8	347.1
South Africa	7.3	10.1	38.4	68.2	15.4	-77.4	-60.9	-5.3
Switzerland	119.4	139.5	16.8	218.2	239.0	9.5	-98.8	-99.5
Syria	75.6	110.1	45.6	57.4	47.0	-18.1	18.2	63.1
Taiwan	14.8	28.1	89.9	64.0	87.8	37.2	-49.2	-59.7
The former Yugoslav Rep. of Macedonia	335.7	446.9	33.1	254.6	364.7	43.2	81.1	82.2
Turkey	1130.3	1867.2	65.2	1332.4	1472.2	10.5	-202.1	395.0
Ukraine	142.0	208.5	46.8	1172.3	1093.5	-6.7	-1030.3	-885.0
United Arab Emirates	80.5	53.6	-33.4	19.5	21.2	8.7	61.0	32.4
USA	264.2	280.5	6.2	228.6	200.2	-12.4	35.6	80.3
Viet Nam	14.9	32.3	116.8	62.0	47.8	-22.9	-47.1	-15.5

¹ Partner country:

- In case of exports (or dispatches) is the country (or Member State) of final destination of the goods
- In case of imports (or arrivals) is the country (or Member State) of consignment of the goods.

² Data are preliminary as of 8.11.2010.

EXPORTS, IMPORTS AND TRADE BALANCE WITH NON EU COUNTRIES BY SECTIONS OF SITC, rev.4
FOR THE PERIOD JANUARY- SEPTEMBER 2009 AND 2010¹

(Million Levs)

Sections by SITC	Exports - FOB			Imports - CIF			Trade balance - FOB/CIF	
	2009	2010	Growth - %	2009	2010	Growth - %	2009	2010
Total - third countries	5698.0	8582.6	50.6	9850.0	10988.7	11.6	-4152.0	-2406.1
Food and live animals	399.9	556.8	39.2	496.5	424.6	-14.5	-96.6	132.2
Beverages and tobacco	198.5	270.2	36.1	109.9	119.0	8.3	88.6	151.2
Crude materials, inedible (except fuel)	448.8	841.6	87.5	1234.0	1472.3	19.3	-785.2	-630.7
Mineral fuel, lubricants and related materials	1404.5	2143.3	52.6	4181.1	4977.6	19.1	-2776.6	-2834.3
Animals and vegetable oils, fats and waxes	31.4	31.9	1.6	34.7	32.1	-7.5	-3.3	-0.2
Chemical and related products n.e.c.	762.2	1050.9	37.9	538.5	625.3	16.1	223.7	425.6
Manufactured goods classified chiefly by material	1225.8	1962.0	60.1	1418.3	1571.3	10.8	-192.5	390.7
Machinery and transport equipment	764.2	1009.6	32.1	1351.4	1283.1	-5.1	-587.2	-273.5
Miscellaneous manufactured articles	449.2	700.5	55.9	477.8	471.7	-1.3	-28.6	228.8
Commodities and transactions n.e.c.	13.5	15.8	17.0	7.8	11.7	50.0	5.7	4.1

¹ Data are preliminary as of 8.11.2010.