

PRODUCTION AND DELIVERIES OF ENERGY PRODUCTS, OCTOBER 2020

Production of energy products

In October 2020 compared to September 2020 an increase is reported for the production of:

- solid fuels - by 31.0% to 2 098 thousand tonnes;
- liquefied petroleum gases - by 40.0% to 7 thousand tonnes;
- unleaded motor gasoline - by 2.2% to 93 thousand tonnes;
- transport diesel - by 4.8% to 196 thousand tonnes;

A decrease is reported for the production of electricity by 2.7% to 3 000 GWh.

No change for the production of natural gas (Annex, Table 1).

In October 2020 compared to the same month of the previous year, an increase is reported for the production of natural gas by 150.0%.

At the same time a decrease is reported for the production of:

- solid fuels - by 24.7%;
- liquefied petroleum gases - by 46.2%;
- unleaded motor gasoline - by 40.8%;
- transport diesel - by 35.7%;
- electricity - by 11.5%.

Deliveries of energy products

In October 2020 compared to September 2020 an increase is reported for the deliveries of:

- solid fuels - by 31.7% to 2 172 thousand tonnes;
- transport diesel - by 13.1% to 216 thousand tonnes;
- natural gas - by 44.4% to 247 million m³;
- electricity - by 6.9% to 2 632 GWh.

A decrease is reported for the deliveries of:

- liquefied petroleum gases - by 31.9% to 32 thousand tonnes;
- unleaded motor gasoline - by 12.8% to 41 thousand tonnes (Annex, Table 2).

In October 2020 compared to the same month of the previous year, an increase is reported for the deliveries of:

- unleaded motor gasoline - by 13.9%;
- transport diesel- by 3.3%;
- natural gas - by 35.0%.

At the same time a decrease is reported for the deliveries of:

- solid fuels - by 23.9%;
- liquefied petroleum gases - by 17.9%;
- electricity - by 0.7%.

www.nsi.bg

Methodological notes

The survey on energy products is conducted every month in accordance with the Regulation (EO) No. 1099/2008 of the European Parliament and of the Council of 22 October 2008 on energy statistics, and its amendments. The survey aims to submit information on the production and inland deliveries of the main energy products - electricity, solid fuels, natural gas and petroleum products. The reporting units are producers, importers and exporters of energy products. Production and deliveries of the energy products are the main observed indicators.

Data series can be found on the NSI website: www.nsi.bg, section Energy/Data.

Solid fuels

Production - includes Hard coal, Lignite and Solid fuels from coal. Producers report quantities calculated after any operation for removal of inert matter.

Deliveries - quantities delivered to the internal market. They are equal to the total of the deliveries to the different types of consumers: producers' own use, main activity power stations, coking plants and patent fuel plants, industry, iron and steel industry and others.

Since 1.01.2017 Brown coal briquettes have been excluded from monthly survey.

Petroleum products

Production - includes production of finished products at a refinery or blending plant.

Deliveries - wholesale deliveries to the domestic market of finished petroleum products from producers, importers/exporters.

Deliveries of petroleum products are defined as: primary product receipts + gross refinery output + recycled products – refinery fuel + imports – exports – international marine bunkers + interproduct transfers – products transferred – stock changes.

Natural gas

Production - includes all dry marketable production within national boundaries, including offshore production. Production is measured after purification and extraction of NGLs and sulphur. Excludes extraction losses and quantities reinjected, vented or flared. Includes quantities used within the natural gas industry; in gas extraction, pipeline systems and processing plants.

Deliveries - total natural gas, distributed for the internal market, including own use and losses.

Data are presented in million cubic meters assuming reference gas conditions 15°C and 101.325 kPa.

To convert quantities from cubic meters at 20°C to cubic meters at 15°C - according to the reporting requirements of Regulation (EC) No. 1099/2008 of the European Parliament and of the Council on energy statistics, we use a conversion factor of 0.98294.

Electricity

Production - includes produced electricity from Thermal power plants, Nuclear power plant, Hydro power plants, Pumped storage plant and electricity, obtained from wind generators and solar panels.

Deliveries - sum of net produced electricity and net import.

Annex

Table 1

Production of energy products

	Measure	2020												
		X	XI	XII	I	II	III	IV	V	VI	VII	VIII	IX	X
Solid fuels	thousand tonnes	2787	2383	2607	2369	2431	2025	1793	1227	1309	1488	1804	1602	2098
Total petroleum products	thousand tonnes	632	592	568	552	559	521	442	274	343	444	398	380	396
of which:														
Liquefied petroleum gases	thousand tonnes	13	12	10	10	10	8	5	5	5	6	6	5	7
Unleaded motor gasoline	thousand tonnes	157	147	147	149	138	128	106	63	75	107	91	91	93
Transport diesel	thousand tonnes	305	276	266	259	256	250	224	132	173	227	201	187	196
Natural gas	million m ³	2	1	5	6	5	5	4	4	4	4	5	5	5
Electricity	GWh	3391	3785	4070	3960	3782	3908	3066	2735	3149	3348	3312	3083	3000

Table 2

Deliveries of energy products

	Measure	2020												
		X	XI	XII	I	II	III	IV	V	VI	VII	VIII	IX	X
Solid fuels	thousand tonnes	2855	2440	2660	2428	2495	2090	1852	1286	1383	1557	1867	1649	2172
Total petroleum products	thousand tonnes	372	337	335	327	279	291	224	303	340	366	409	370	373
of which:														
Liquefied petroleum gases	thousand tonnes	39	35	41	43	34	30	18	36	42	38	40	47	32
Unleaded motor gasoline	thousand tonnes	36	40	33	40	28	28	23	43	41	39	50	47	41
Transport diesel	thousand tonnes	209	178	187	179	150	166	115	163	194	206	232	191	216
Natural gas	million m ³	183	259	334	360	316	302	232	185	173	171	156	171	247
Electricity	GWh	2650	2856	3377	3679	3196	3073	2578	2344	2337	2585	2548	2461	2632

Figure 1. Production and deliveries of solid fuels

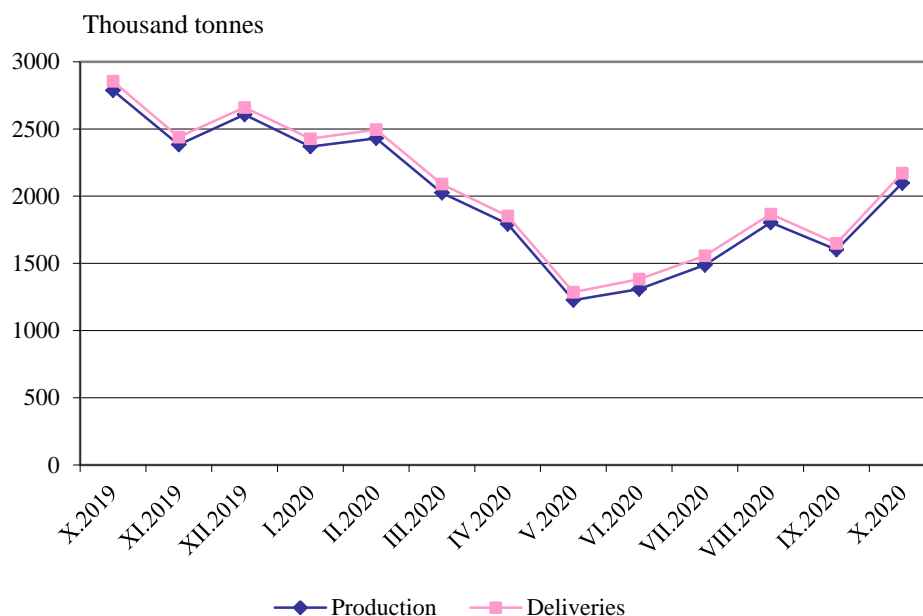


Figure 2. Production and deliveries of liquefied petroleum gases

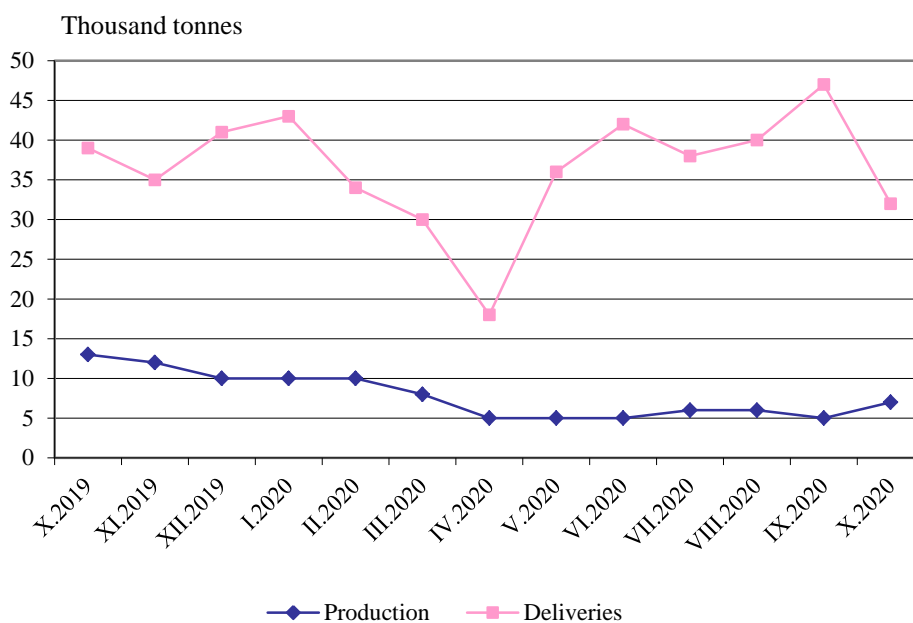


Figure 3. Production and deliveries of unleaded motor gasoline

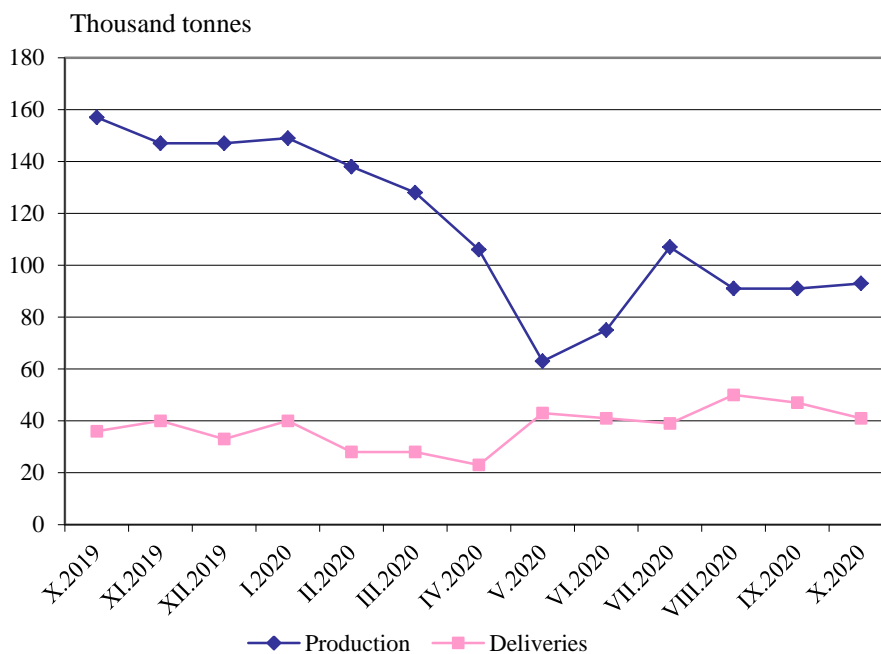


Figure 4. Production and deliveries of transport diesel

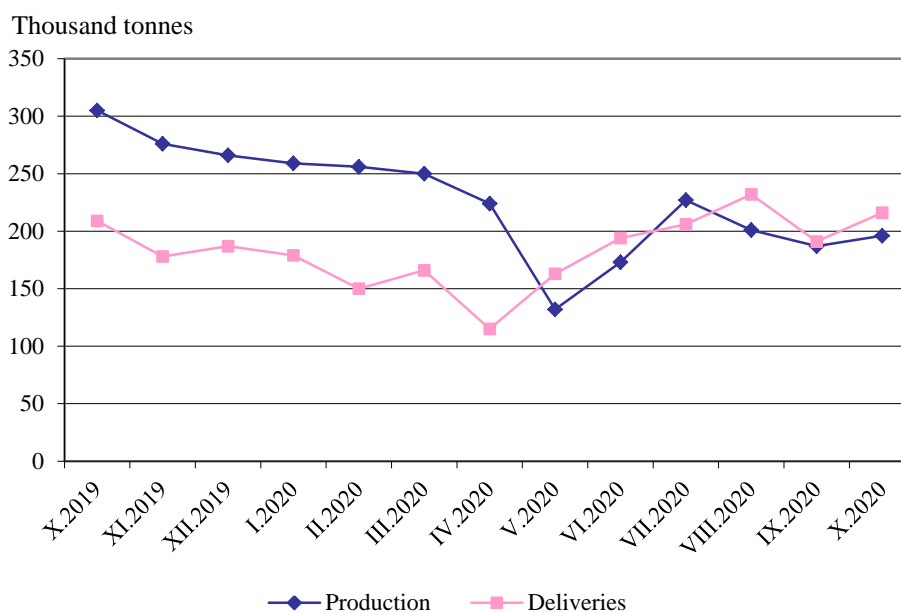


Figure 5. Production and deliveries of natural gas

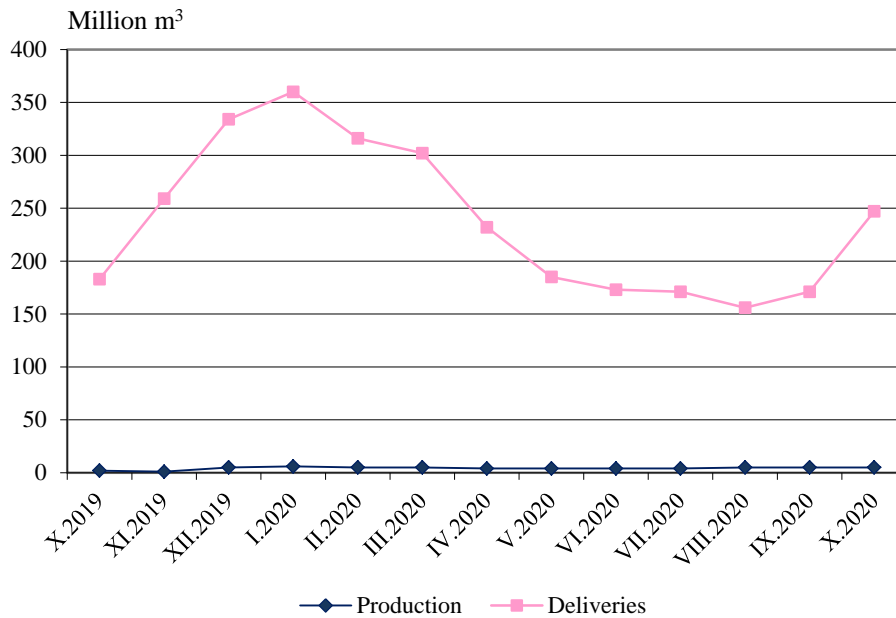


Figure 6. Production and deliveries of electricity

